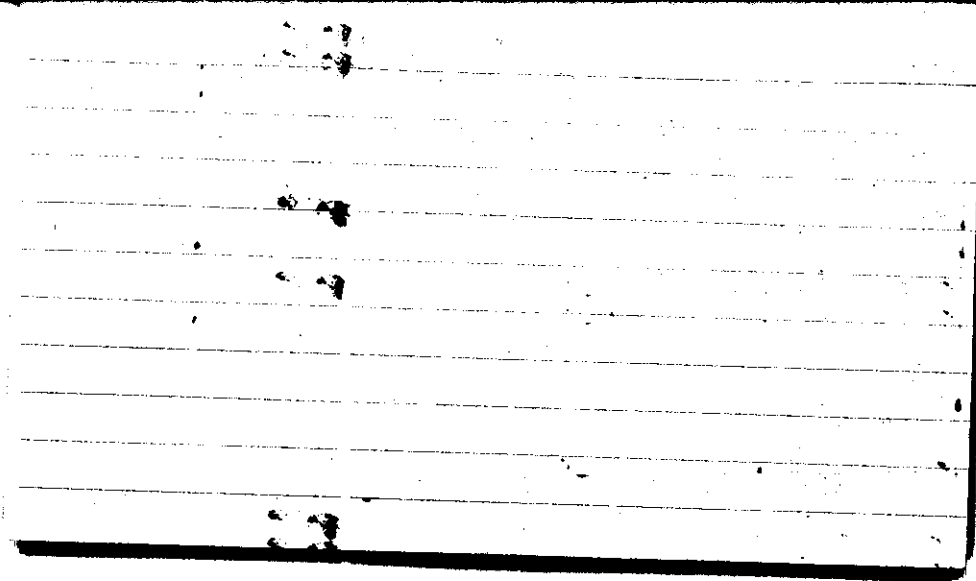


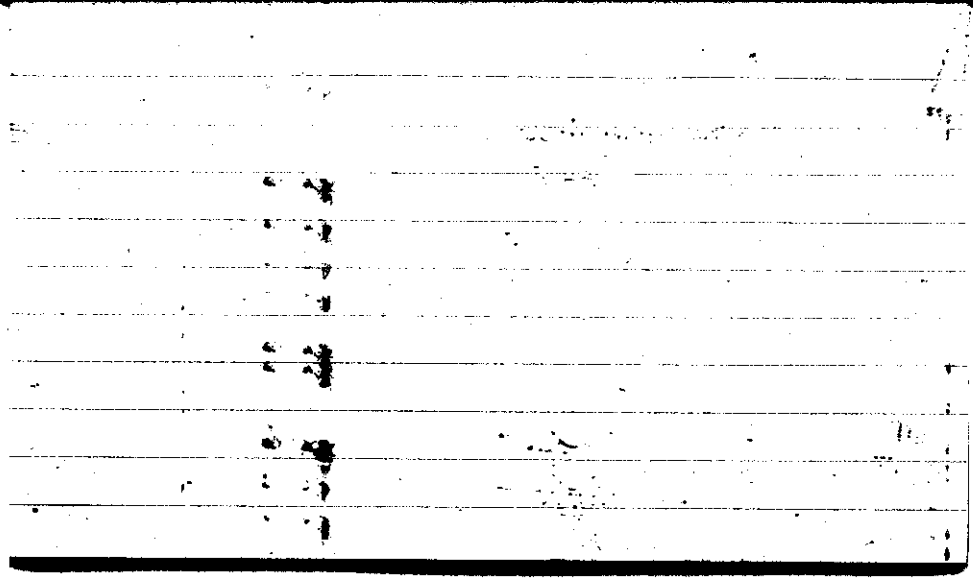
STATE COLLEGE, Pa. Date SEP 1 1941

Time 07:05

| | | | |
|--------------------------------|-----------------|---|------------------------------------|
| Max. 86.9 | Wind F SSW 4 | Barom. t 83 | General Obs. 4:50 ◉-- 5:20 ▽ |
| Min. 73.9 | Vis. km. 15 | 28.82 | |
| Dry 74.3 | Clouds 10 | p(red.) 28.68 | |
| Wet | Sc | | |
| R.H. 95 | | Morn. showers overcast, cloudy | Foren. cloudy |
| Precip. 1.4 mm / 0.05 in. | | Noon cloudy to partly cloudy | Aftern. partly cloudy |
| Snowfall/-Depth — in / — in | | Eve. ^{ci} fair _{or} ^{pe} fine _{or} ^{sn} rain | Night fair |



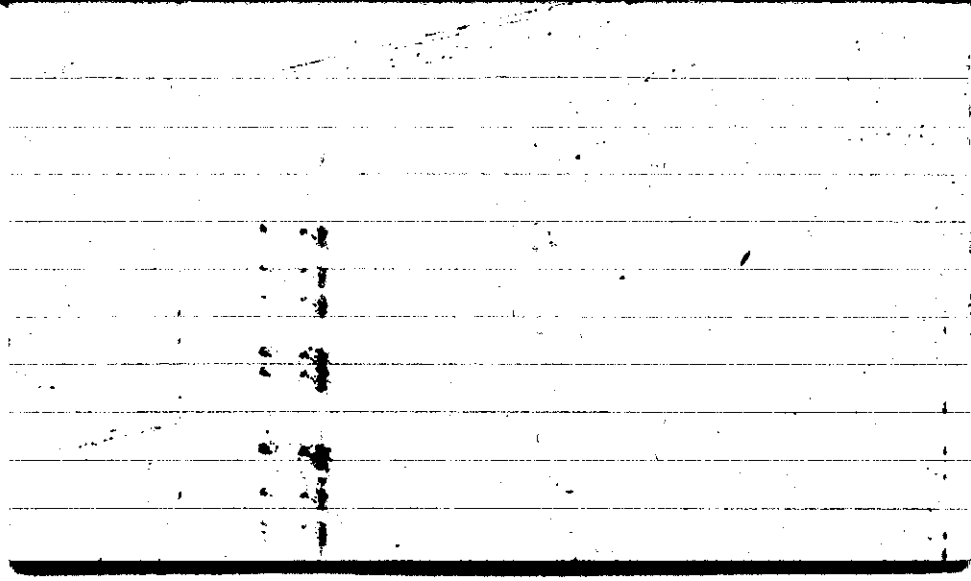
| | | | | |
|----------------------------------|-----------------------|-------------------------------|---|--|
| Max. 86.0 | Wind F NNW 2 | Barom. t 82 | General Obs. 6 ^h e ^t | |
| Min. 53.9 | Vis. km. 25 | p 29.03 | (6 ^h 0) 7 ^h 0 - 7 ³⁰) | |
| Dry 57.7 | Clouds 7 | p (red.) 28.89 | | |
| Wet | ac cc co flocc. | | | |
| R.H. 90 | co neb ci fil | Morn. partly cloudy | Foren. fair co flocc ci fil | |
| Precip. — mm / — in | | Noon fair | Aftern. fair | |
| Snowfall / -Depth — in / — in | | Eve. fair to partly cloudy | Night partly cloudy | |



STATE COLLEGE, Pa. . Date SEP 3 1941

Time
0700

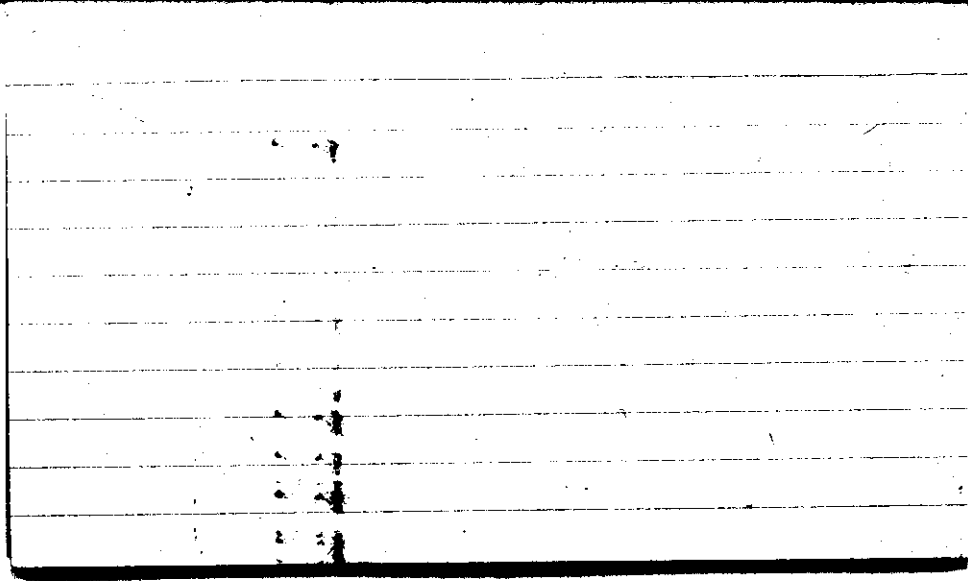
| | | | | |
|--------------------------------|----------------|-------------------|--------------------------------------|--|
| Max. 75.0 | Wind F N 2 | Barom. t 78 | General Obs. '6" e° 22:15° - 2235 | |
| Min. 54.1 | Vis. km. 35 | p 29.07 | | |
| Dry 56.8 | Clouds 10 | p(red.) 28.94 | | |
| Wet | as ac | | | |
| R.H. 93 | | Morn. overcast | Foren. overcast to cloudy | |
| Precip. — mm/ — in. | | Noon overcast | Aftern. overcast | |
| Snowfall/-Depth — in/ — in. | | Eve. " | Night overcast + light rain | |



STATE COLLEGE, Pa. Date SEP 4 1941

Time
0700

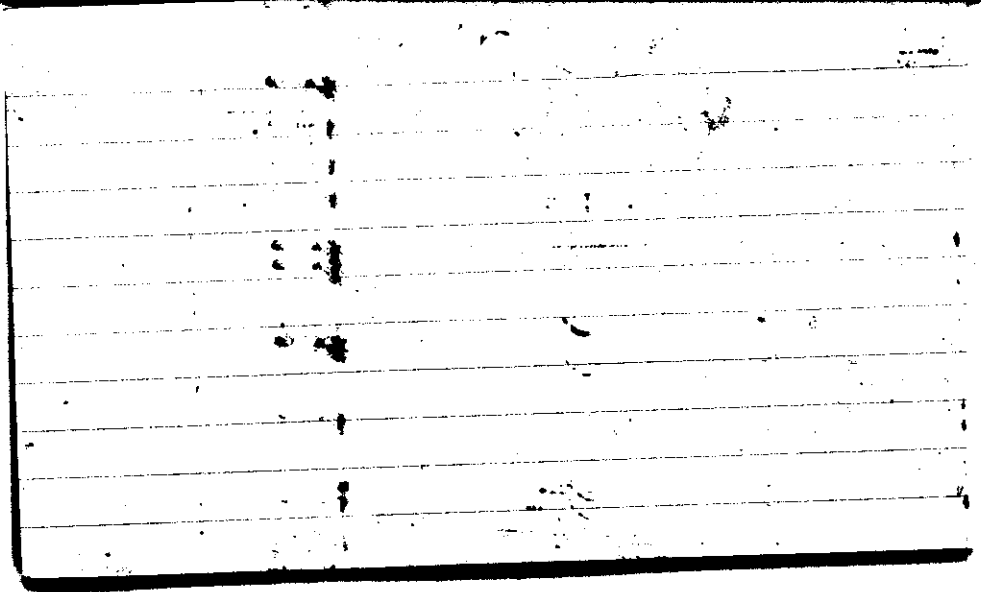
| | | | |
|-----------------------------------|----------------|--------------------------------------|--|
| Max. 69.8 | Wind F SW 2 | Barom. t 76 | General Obs. 6 ≡° 6 ⁵⁵ ° - 7 ³⁰ |
| Min. 56.8 | Vis. km. 3 | p 29.00 | 7 ⁵⁰ ° - 8 ⁴⁰ |
| Dry 65.3 | Clouds 10 | p (red.) 28.88 | 11.45 ° - 12.00 / 15:35 ° - 16:20 |
| Wet | Ns | | R 15:10-16:05 17:25 ° - 17:55 18:30 ° - 19:20 |
| R.H. 99 | | Morn. overcast, fog, rain | Foren. overcast, rain |
| Precip. 0.5 mm / 0.02 in. | | Noon rain overcast with breaks | Aftern. Thunderstorm cloudy to overcast |
| Snowfall / -Depth — in / — in. | | Eve. overcast, showers | Night cloudy to overcast |



STATE COLLEGE, Pa. Date **SEP 5 1941**

Time
0705

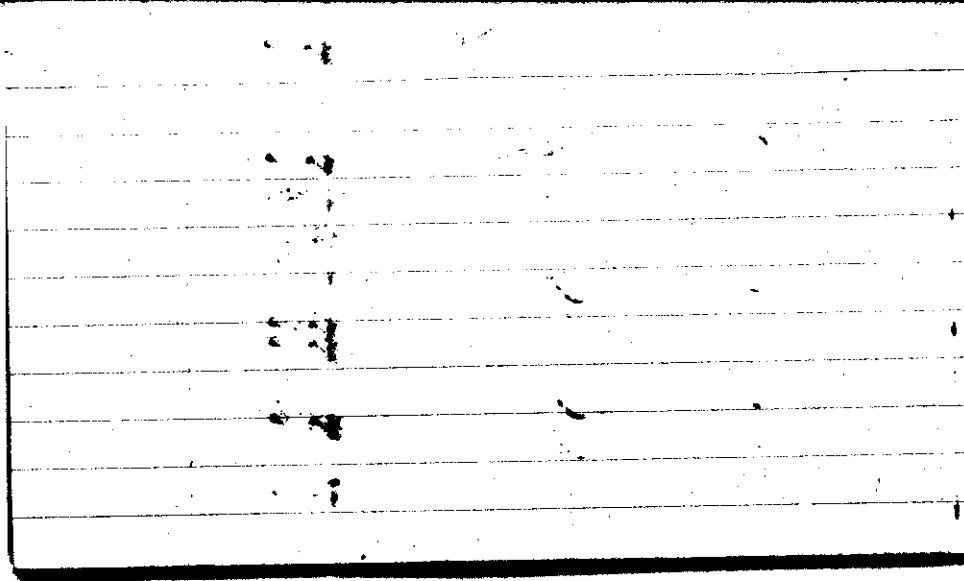
| | | | |
|------------------------------|------------------------|---|---|
| Max. 79.5 | Wind F SW 2 | Barom. t 77 | General Obs. 0415 ∇ ²⁻¹ - 5:10 |
| Min. 65.3 | Vis. km. 15 | p 28.88 | 1925 ∇ ²⁻¹ - 21:30 |
| Dry 69.8 | Clouds 9 | p (red.) 28.67 | 0410 ∇ - 515 / 1920 ∇ 21:00 |
| Wet | ac c/fm as frost | | 20:35 WNW 45 mph |
| R.H. 98 | sc | Morn. cloudy | Foren. cloudy |
| Precip. 14.8 mm / 0.5 in. | | Noon cloudy | Aftern. " |
| Snowfall/-Depth in/ in. | | Eve. ^{capit, comet} cloudy ^{at 10:00} ∇ | Night clearing to fair |
| | | to overcast. | |



STATE COLLEGE, Pa. Date **SEP 6 1941**

Time
0705

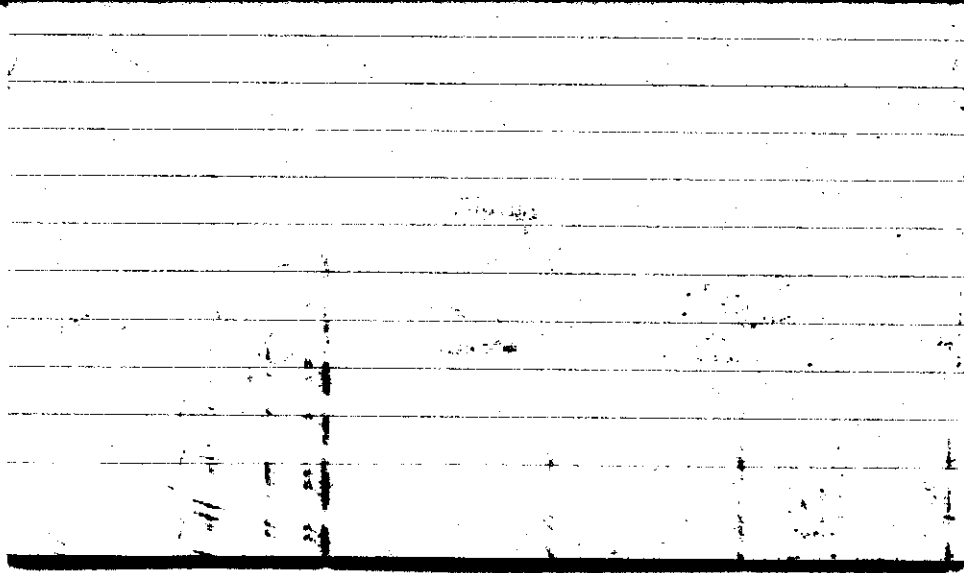
| | | | |
|-------------------------------|----------------|--|-----------------------------------|
| Max. 86.3 | Wind P SW 3 | Barom. t 79 | General Obs. 7 ^h ∞ |
| Min. 58.9 | Vis. km. 8 | p 28.74 | |
| Dry 62.9 | Clouds 0 | p(red.) 28.61 | |
| Wet | | | |
| R.H. 97 | | Morn. partly cloudy to clear, hazy. ac, ci, fl, nc, cc | Foren. clear to partly cloudy |
| Precip. 12.3 mm / 0.48 in. | | Noon ci, fil, ci, flocc, partly cloudy, ci, ac | Aftern. ci, nc, ac, partly cloudy |
| Snowfall/-Depth in/- in. | | Eve. clearing, fair (ci) | Night fair |



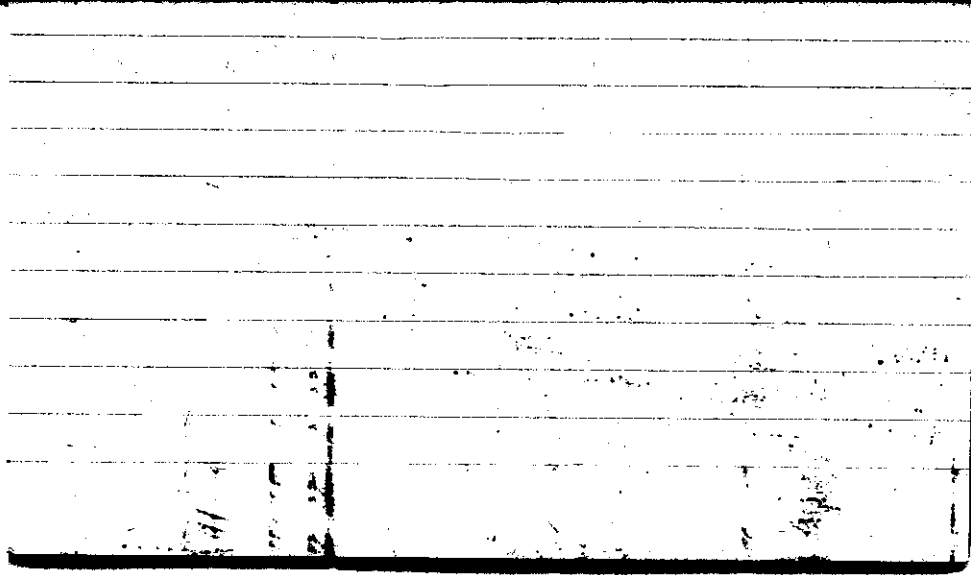
STATE COLLEGE, Pa. Date SEP 7 1941

Time
0700

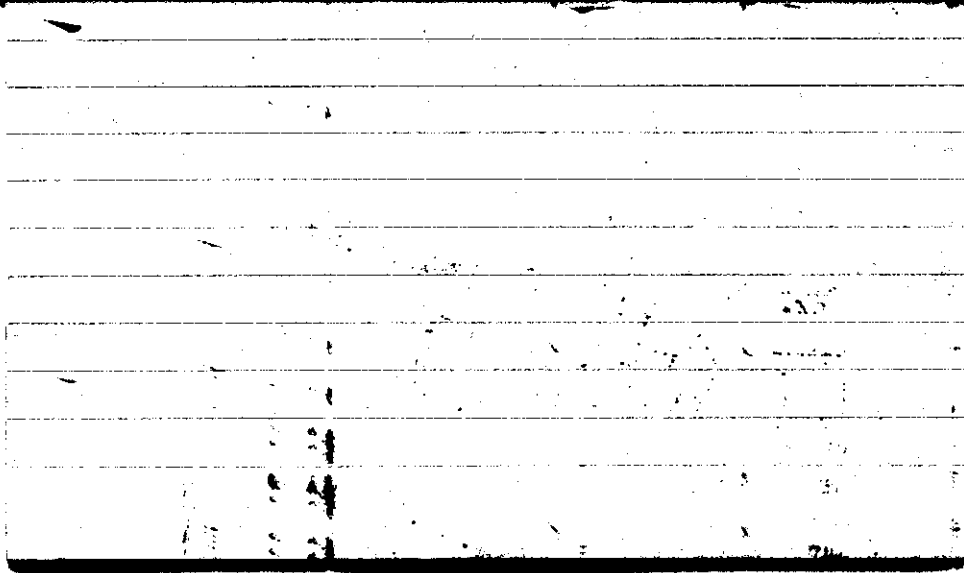
| | | | |
|----------------------------|--------------------------|-----------------------------------|------------------------------------|
| Max. 82.6 | Wind F WSW 2 | Barom. t 79 | General Obs. 7 ^h 2' |
| Min. 60.5 | Vis. km. 15 | p 28.76 | |
| Dry 66.1 | Clouds 5 | p(red.) 28.65 | |
| Wet | ac cs neb ci flocc | | |
| R.H. 82 | | Morn. partly cloudy | Foren. partly cloudy |
| Precip. — mm/ — in. | | Noon cloudy | Aftern. cloudy to partly cloudy |
| Snowfall/-Depth in/ in. | | Eve. cc, partly cloudy, cs neb | Night partly cloudy |



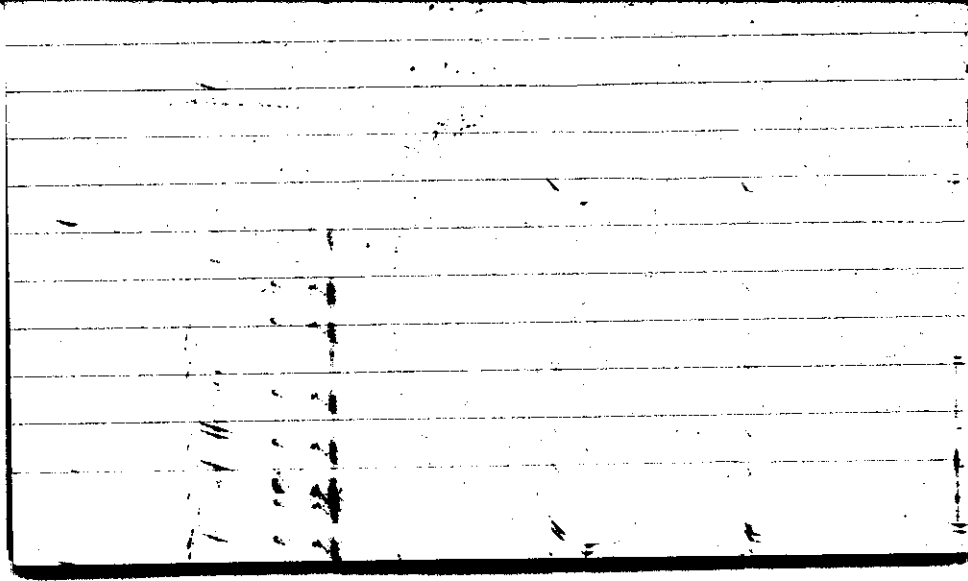
| | | | |
|----------------------------|--------------------|----------------------------------|---|
| Max. 78.0 | Wind F NIVE 2 | Barom. t 78 | General Obs. 7h ² 5 ¹⁵ -6 ¹⁵ o; |
| Min. 52.7 | Vis. km. 20 | p 28.98 | |
| Dry 55.0 | Clouds ci vert | p (red.) 28.85 | |
| Wet | ci flocc ci unc | | |
| R.H. 91 | ac | Morn. fair to partly cloudy | Foren. fair |
| Precip. mm/ in. | | Noon fair to clear | Aftern. clear |
| Snowfall/-Depth in/ in. | | Eve. clear to fair ci fil, ac | Night fair |



| | | | |
|--------------------------------|-------------------------------------|---|--|
| Max. 81.2 | Wind F calm 0 | Barom. t 78 | General Obs. 6 ^h 0; - 6 ²⁵ |
| Min. 54.5 | Vis. km. 15 | p 29.00 | 7 ^h ∞ |
| Dry 65.5 | Clouds 7 1 sec cast cu | p (red.) 28.87 | 19 ^h shower in west about 5 mi from S.C. |
| Wet | | | 2040 ↘ S-W |
| R.H. 91 | 6 { cu neb ci flocc co den | Morn. partly cloudy | Foren. ac, ci, cu comp partly cloudy cs |
| Precip. — mm/ — in. | | Noon cu, ct, ci, co partly cloudy | Aftern. ct, ci co. partly cloudy |
| Snowfall/-Depth — in/ — in. | | Eve. ci, pr, al, fl, co flocc partly cloudy to cloudy showers | Night partly cloudy |



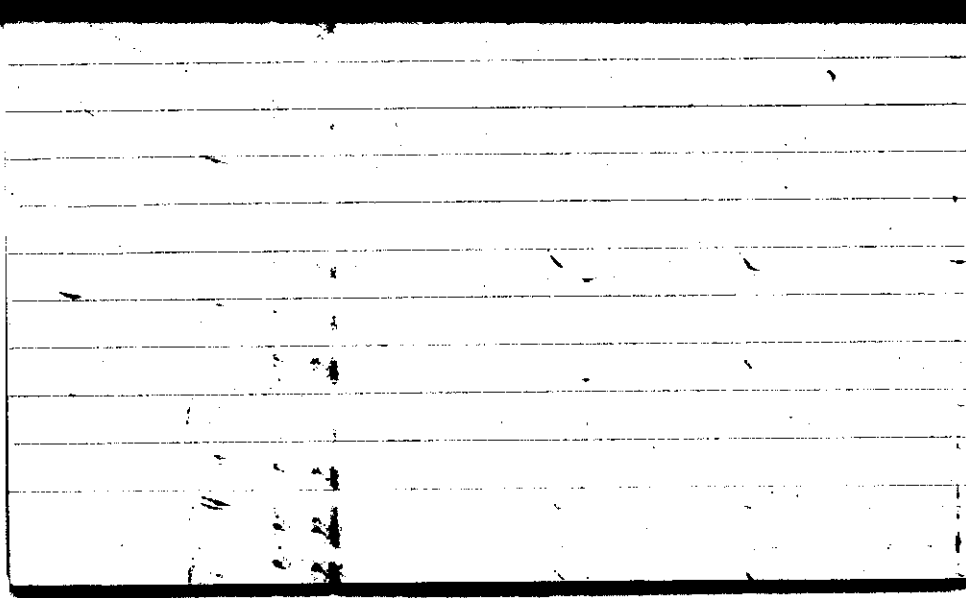
| | | | | |
|----------------------------|---------------------------------|------------------------|---|--|
| Max. 91.6 | Wind F Calm 0 | Barom. t 82 | General Obs. 74 20° e. 14:35-14:40 ⬇ | |
| Min. 65.5 | Vis. km. 12 | p 29.02 | 15:10 ⬇ -1530 | |
| Dry 76.0 | Clouds 6 | p (red.) 28.88 | 15:50 ⬇ -1700 | |
| Wet | ac ci pra. cc ci flocc | | 16:05 ⬇ -1735 | |
| R.H. 90 | | Morn. partly cloudy | Foren. cloudy | |
| Precip. mm/ in. | | Noon cloudy | Aftern. showers thunderstorms cloudy (cb ac) | |
| Snowfall/-Depth in/ in. | | Eve. cloudy | Night clearing | |



STATE COLLEGE, Pa. Date SEP 11 1941

Time
0700

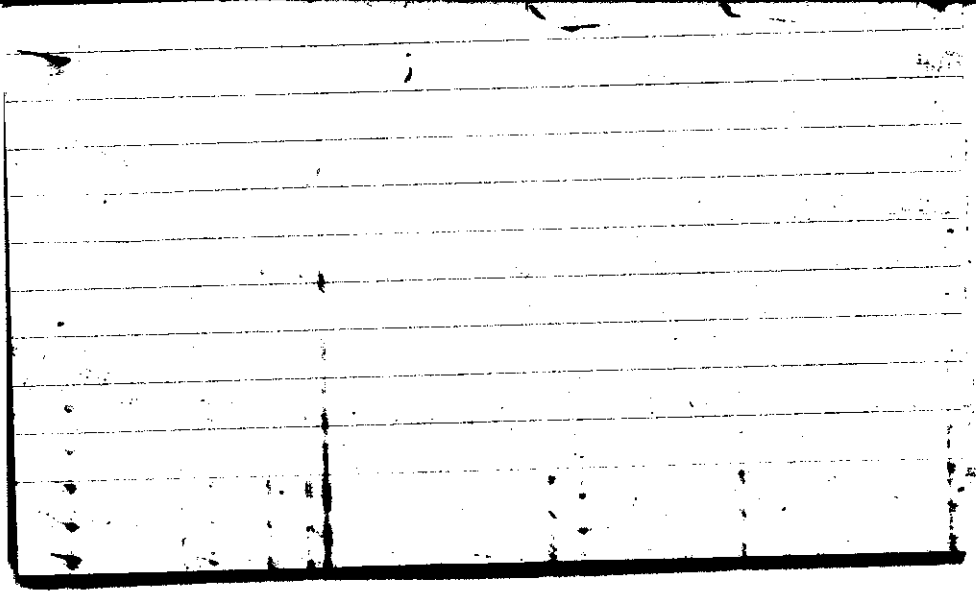
| | | | | |
|------------------------------|-----------------------|---------------------|-----------------------|--|
| Max. 90 | Wind P NW 3 | Barom. t 73 | General Obs. 6' a | |
| Min. 55.8 | Vis. km. 25 | p 29.11 | | |
| Dry 57.0 | Clouds 1 ci den | p(red.) 28.99 | | |
| Wet | fr cu | | | |
| R.H. 78 | | Morn. partly cloudy | Foren. cloudy | |
| Precip. 5.0 mm / 0.20 in. | | Noon cloudy | Aftern. " | |
| Snowfall/-Depth in/ in. | | Eve. " | Night cloudy clearing | |



STATE COLLEGE, Pa. Date SEP 12 1941

Time
0705

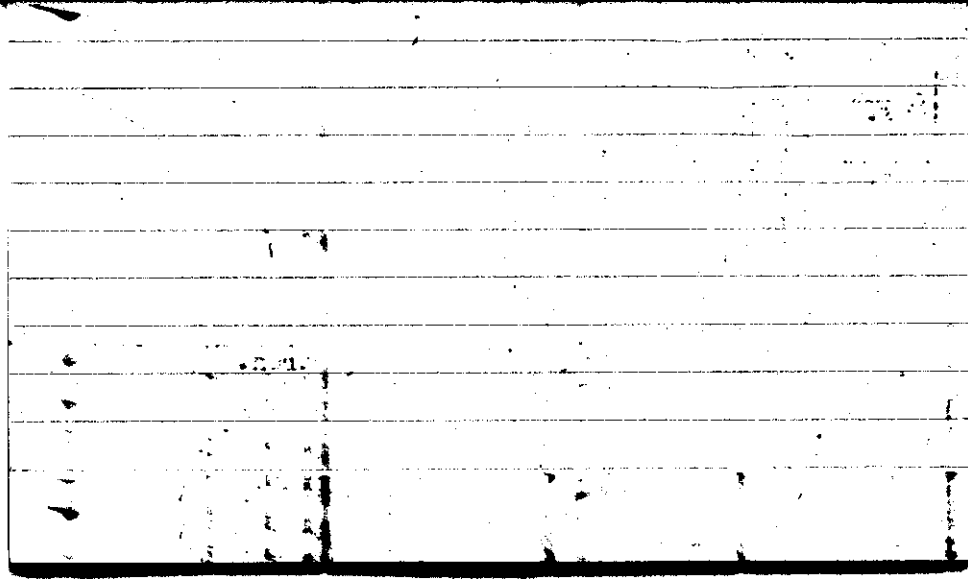
| | | | |
|-----------------------------------|-------------------|-------------------|---|
| Max. 68.0 | Wind F WSW 1 | Barom. t 64 | General Obs. 7 ^h = ° 0 ² |
| Min. 41.9 | Vis. km. 20 | p 29.15 | |
| Dry 47.6 | Clouds 2 | p (red.) 29.05 | |
| Wet | ce fit ci flou | | |
| R.H. 94 | | Morn fair | Foren. fair |
| Precip. — mm / — in. | | Noon " | Aftern. clear |
| Snowfall / -Depth — in / — in. | | Eve. clear | Night " |



STATE COLLEGE, Pa. Date **SEP 13 1941**

Time
0705

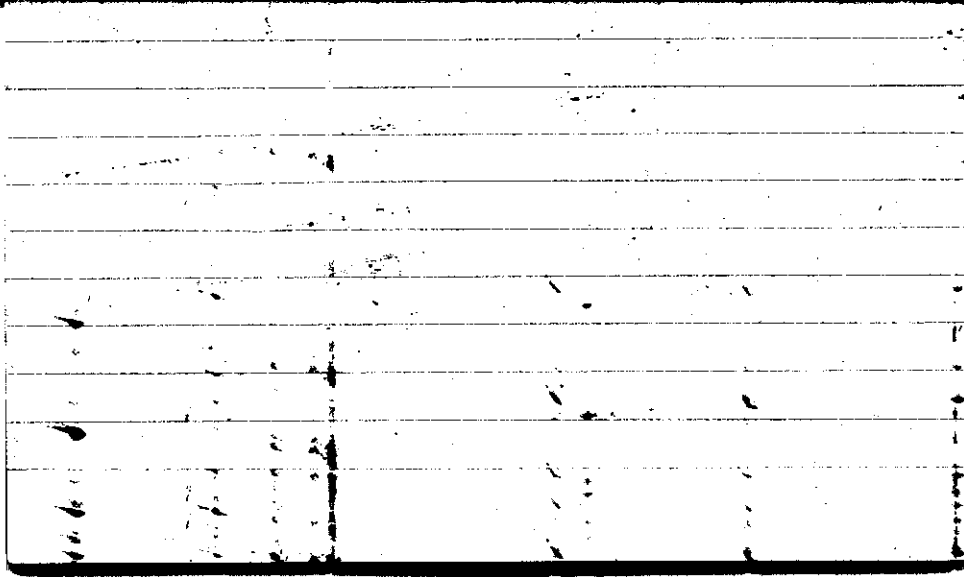
| | | | |
|----------------------------|---------------------|------------------|---|
| Max. 71 | Wind F NE 1 | Barom. t 60 | General Obs. 6 ^h 2 ^z |
| Min. 40.5 | Vis. km. 20 | p 29.18 | |
| Dry 45 | Clouds 1 | p(red.) 29.10 | |
| Wet | ci fel ci flocc. | | |
| R.H. 92 | | Morn. fair | Foren. fair |
| Precip. mm/ in. | | Noon fair | Aftern. clear |
| Snowfall/-Depth in/ in. | | Eve. clear | Night " to fair |



STATE COLLEGE, Pa. Date **SEP 14 1941**

Time
0100

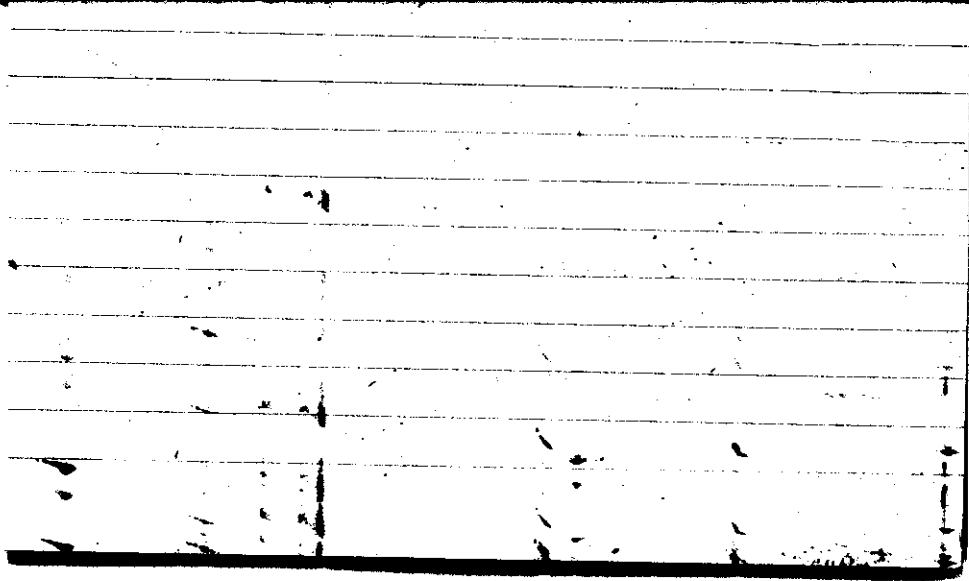
| | | | |
|----------------------------|----------------|----------------------|-----------------------|
| Max. 73.0 | Wind F calm | Barom. t 21 | General Obs. 6" a' |
| Min. 45.0 | Vis. km. 25 | p 29.20 | |
| Dry 53.0 | Clouds ' | p(red.) 29.09 | |
| Wet | ci den | | |
| R.H. 84 | | Morn. <i>fair</i> | Foren. <i>fair</i> |
| Precip. mm/ in. | | Noon " | Aftern. " |
| Snowfall/-Depth in/ in. | | Eve. " | Night " |



STATE COLLEGE, Pa. Date **SEP 15 1941**

Time
0705

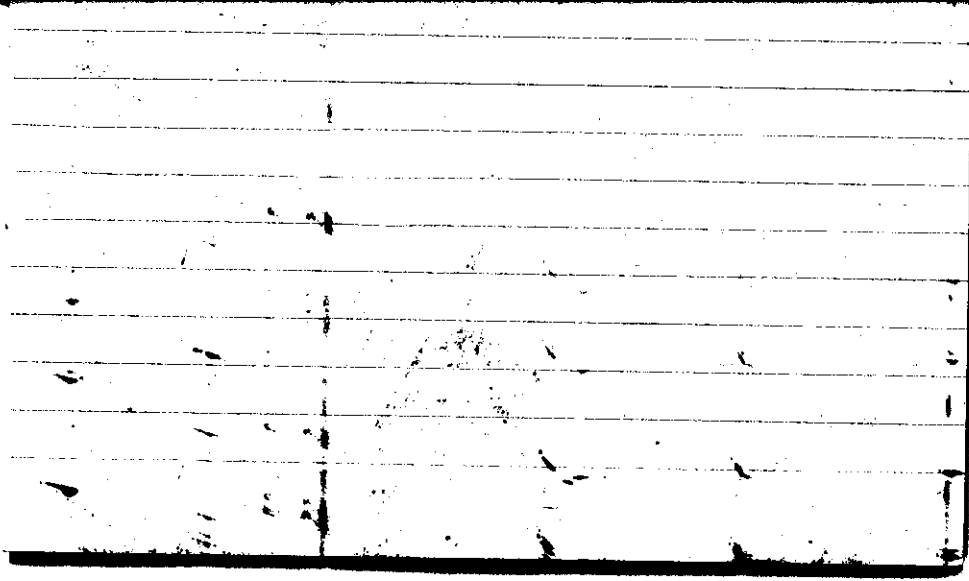
| | | | | |
|----------------------------|-----------------|------------------|-----------------------|--|
| Max. 76.7 | Wind F WSW 2 | Barom. t 23 | General Obs. 7" 20 | |
| Min. 52.5 | Vis.km. 17 | p 29.10 | | |
| Dry 57.2 | Clouds ci fd | p(red.) 28.98 | | |
| Wet | ci pra | | | |
| R.H. 88 | | Morn. fair | Foren. fair | |
| Precip. — mm/ — in. | | Noon " | Aftern. " | |
| Snowfall/-Depth in/ in. | | Eve. " | Night " | |



STATE COLLEGE, Pa. Date **SEP 16 1941**

Time

| | | | |
|----------------------------|----------------|--------------------------------|-----------------------------------|
| Max. 83.5 | Wind F SW 1 | Barom. t 70 | General Obs. 7h - 52.7 |
| Min. 56.5 | Vis.km. 10 | p 29.04 | |
| Dry 61.5 | Clouds | p(red.) 28.93 | |
| Wet | | | |
| R.H. 92 | | Morn. <i>clear</i> | Foren. <i>fair</i> |
| Precip. — mm/ — in. | | Noon <i>partly cloudy p.m.</i> | Aftern. <i>partly cloudy p.m.</i> |
| Snowfall/-Depth in/ in. | | Eve. <i>fair</i> | Night |

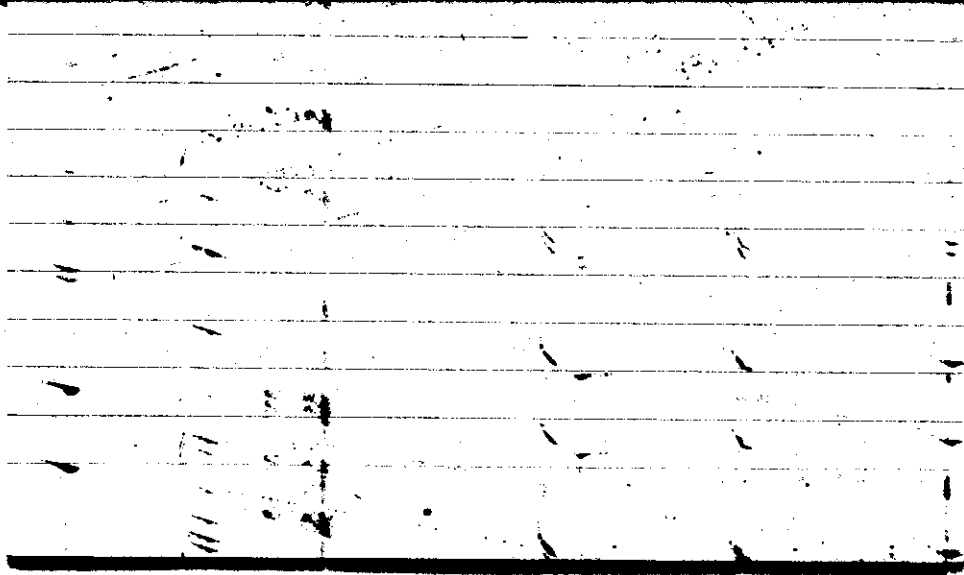


STATE COLLEGE, Pa. Date

SEP 17 1941

Time

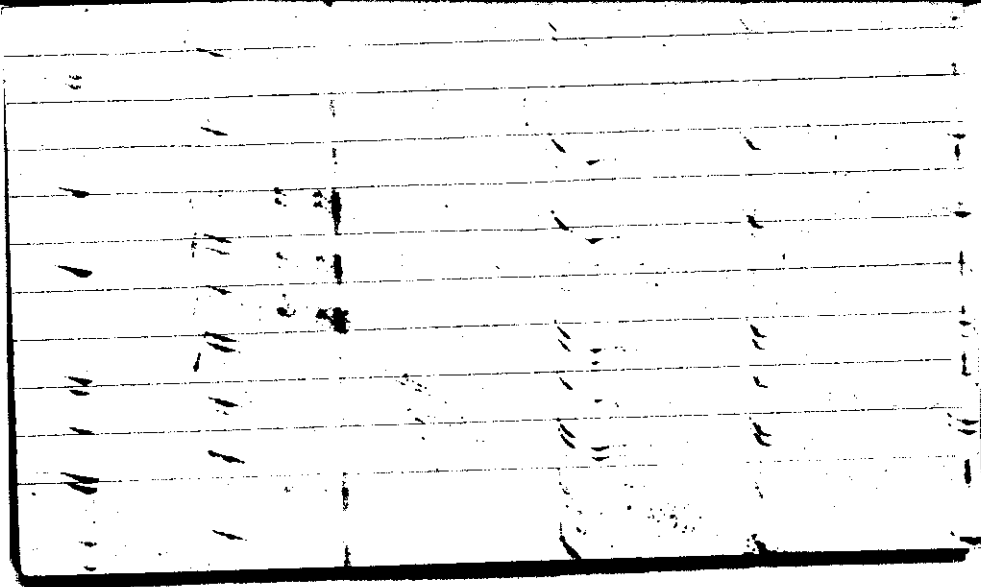
| | | | |
|----------------------------|----------------|-------------------|---|
| Max. 85.7 | Wind F W 1 | Barom. t 75 | General Obs. |
| Min. 61.5 | Vis. km. 12 | p 28.98 | |
| Dry 68.0 | Clouds 9 | p (red.) 28.86 | |
| Wet | St as | | |
| R.H. 76 | ac | Morn. cloudy | Foren. cloudy |
| Precip. mm/ in. | | Noon " | Aftern. ^{in place, a few} ^{in wind, ice} cloudy to pthly cloudy |
| Snowfall/-Depth in/ in. | | Eve. fair. | Night |



STATE COLLEGE, Pa. Date **SEP 18 1941**

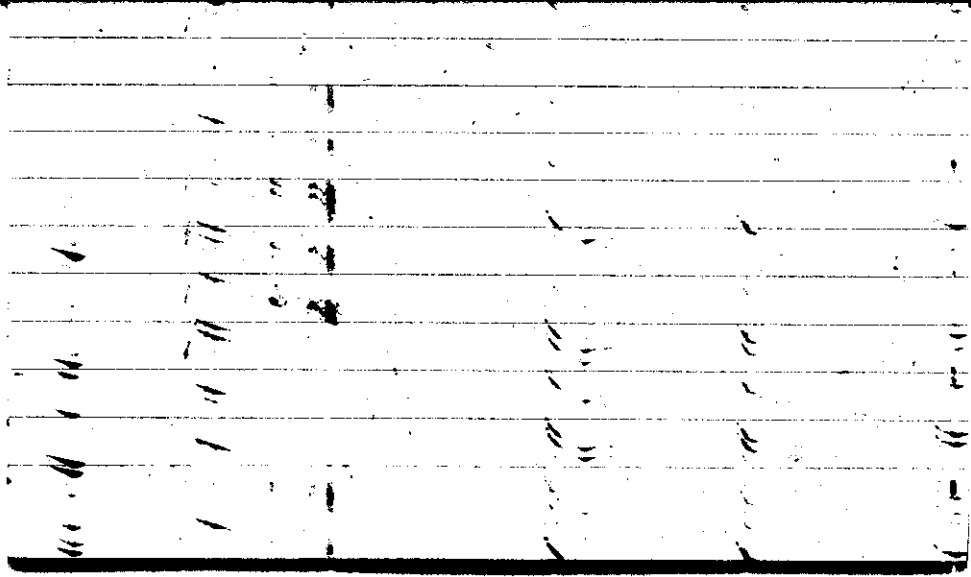
Time
0700

| | | | |
|-----------------------------------|------------------|-----------------------|---|
| Max. 81.0 | Wind F calm | Barom. t 76 | General Obs. 19 ^h 5 ³⁰ 1819 |
| Min. 48.1 | Vis. km. 25 | p 29.12 | |
| Dry 52.9 | Clouds ci den | p(red.) 29.00 | |
| Wet | ci pta | | |
| R.H. 97 | ci unc | Morn. fair | Foren. partly cloudy ci hum |
| Precip. — mm / — in. | | Noon partly cloudy | Aftern. partly cloudy ci hum |
| Snowfall / -Depth — in / — in. | | Eve. " " ci hum | Night clear |



STATE COLLEGE, Pa. Date **SEP 19 1941**Time
0700

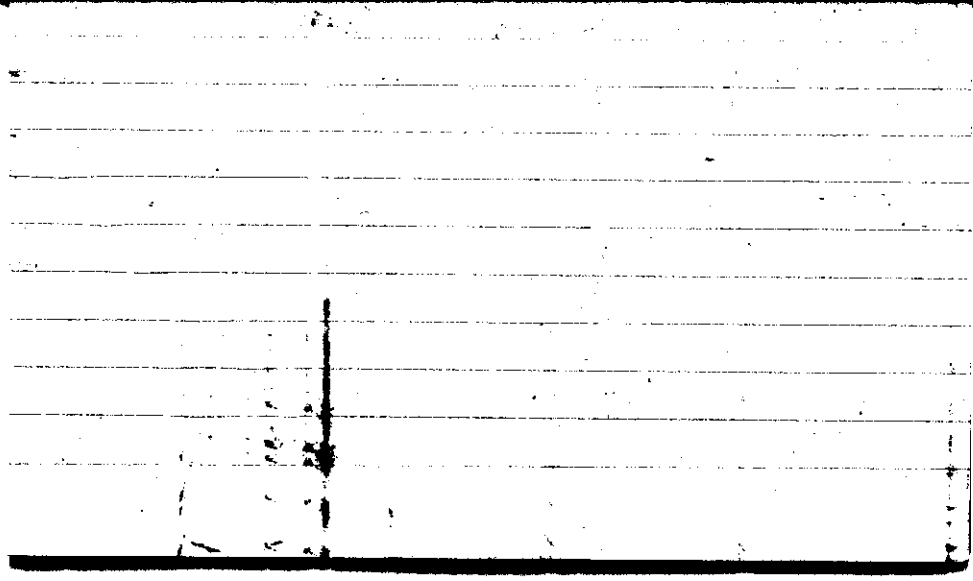
| | | | |
|----------------------------|----------------|----------------------------|--|
| Max. 70.5 | Wind F W 1 | Barom. t 65 | General Obs. 7 ^h 2 ² 3 ⁰ |
| Min. 46.2 | Vis. km. 15 | p 29.12 | |
| Dry 50.5 | Clouds | p (red.) 29.02 | |
| Wet | | | |
| R.H. 95 | | Morn. clear, ground fog | Foren. clear |
| Precip. — mm/ — in. | | Noon clear | Aftern. in fil fair in floor |
| Snowfall/-Depth in/ in. | | Eve. fair | Night fair |



STATE COLLEGE, Pa. Date SEP 20 1941

Time
0700

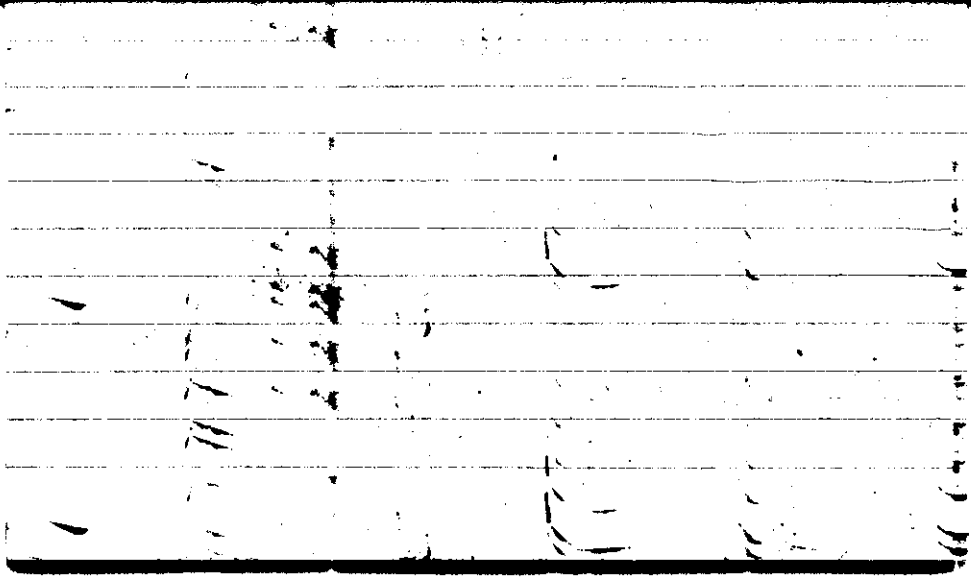
| | | | | |
|---------------------------------|----------------|--------------------------------|-----------------------------------|--|
| Max. 73.0 | Wind P NE 2 | Barom. t. 65 | General Obs. 6 ^h = | |
| Min. 47.0 | Vis. km. 15 | p 29.20 | | |
| Dry 49.2 | Clouds <1 | p(red.) 29.10 | | |
| Wet | fca | | | |
| R.H. 94 | | Morn. fair to partly cloudy | Foren. partly cloudy to cloudy | |
| Precip. — mm / — in. | | Noon partly cloudy | Aftern. clear | |
| Snowfall/-Depth — in / — in. | | Eve. | Night | |



STATE COLLEGE, Pa. Date **SEP 21 1941**

Time
0700

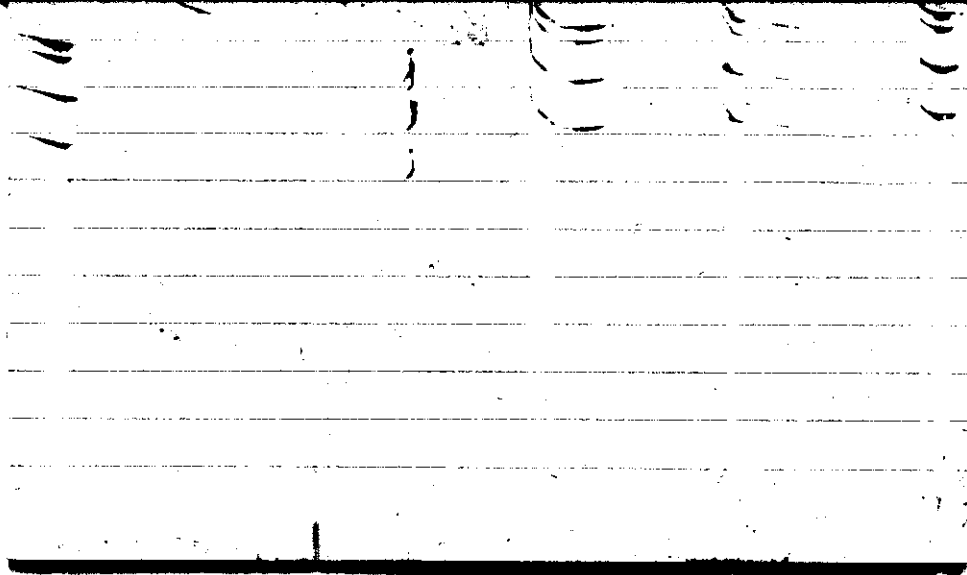
| | | | |
|-------------------------------|----------------|------------------|-------------------------|
| Max. 70.5 | Wind F E 2 | Barom. t 69 | General Obs. 7' ∞ 2' |
| Min. 42.0 | Vis. km. 10 | p 29.19 | |
| Dry 44.2 | Clouds 1 | p(red.) 29.08 | |
| Wet | ac | | |
| R.H. 96 | | Morn. fair | Foren. clear |
| Precip. — mm/ — in. | | Noon. clear | Aftern. " |
| Snowfall/Depth — in/ — in. | | Eve. " | Night " |



STATE COLLEGE, Pa. Date **SEP 22 1941**

Time
0759

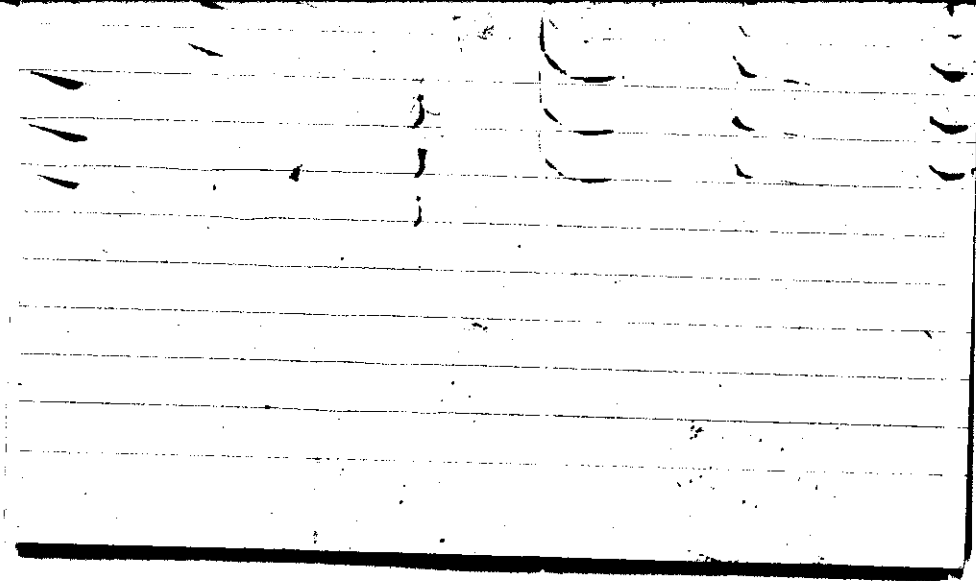
| | | | |
|----------------------------|----------------|------------------|---|
| Max. 76.5 | Wind F SE 1 | Barom. t 70.0 | General Obs. 6" a ² 0° 0° |
| Min. 43.6 | Vis.km. 6 | p 29.11 | |
| Dry 52.0 | Clouds < 1 | p(red.) 29.00 | |
| Wet | ci | | |
| R.H. 94 | | Morn. fair | Foren. clear |
| Precip. mm/ in. | | Noon clear | Aftern. fair (ci floor) |
| Snowfall/-Depth in/ in. | | Eve. clear | Night clear |



STATE COLLEGE, Pa. Date **SEP 23 1941**

Time
07:00

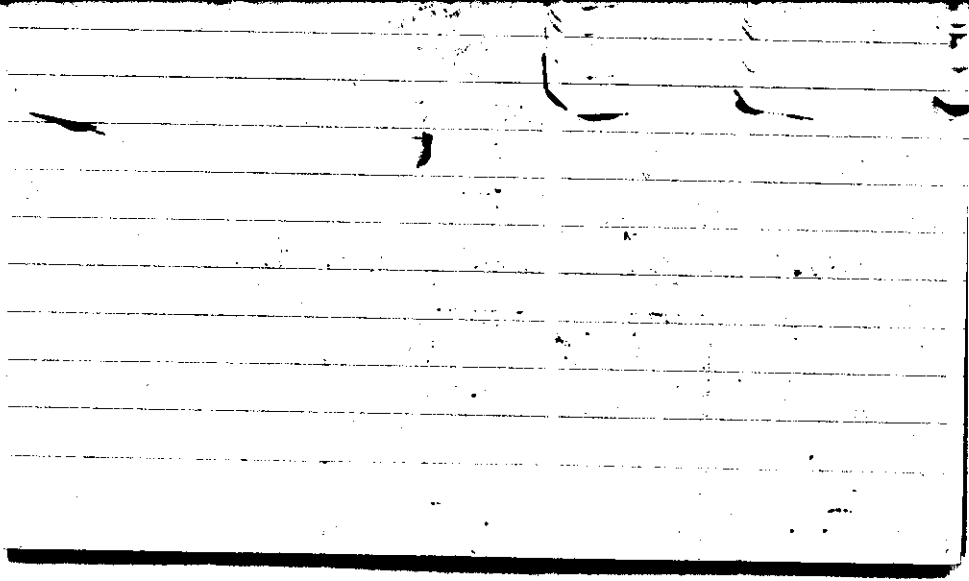
| | | | |
|----------------------------|----------------|----------------------------|---|
| Max. 83.5 | Wind F NW 1 | Barom. t 74 | General Obs. 6 ^h 00° 0° 2 |
| Min. 46.8 | Vis. km. 10 | p 29.00 | |
| Dry 54.5 | Clouds / | p(red.) 28.88 | |
| Wet | | | |
| R.H. 87 | | Morn. clear | Foren. clear |
| Precip. — mm/ — in. | | Noon clear | Aftern. fair |
| Snowfall/-Depth in/ in. | | Eve. partly cloudy (ac) | Night partly cloudy (ac) |



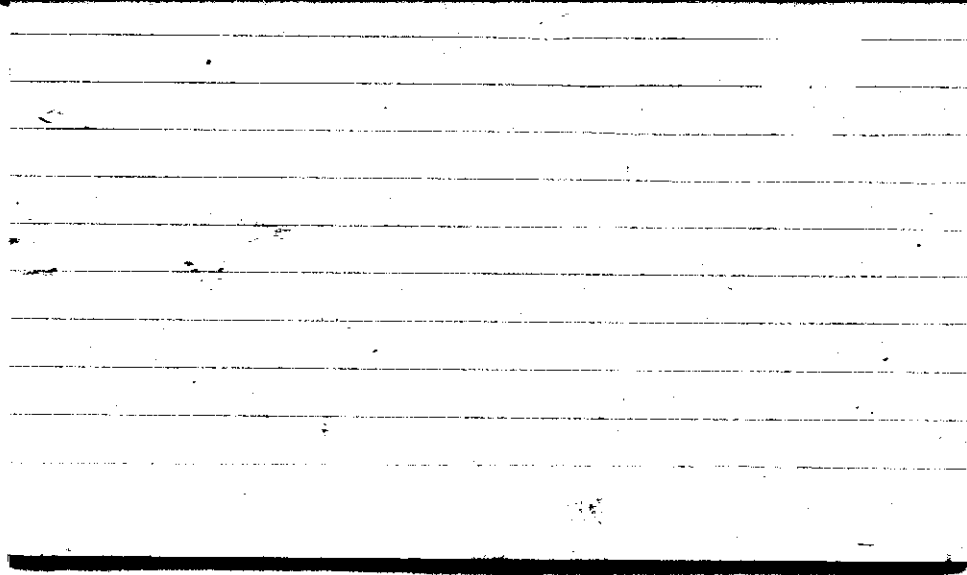
STATE COLLEGE, Pa. Date SEP 24 1949

Time
0700

| | | | | |
|----------------------------|-----------------|-------------------|---------------------------|--|
| Max. 84.7 | Wind F ENE 2 | Barom. t 76 | General Obs. 74 = | |
| Min. 54.5 | Vis. km. 15 | p 28.96 | | |
| Dry 60.5 | Clouds ⊕ | p (red.) 28.84 | | |
| Wet | as ac | | | |
| R.H. 94 | | Morn. overcast | Foren. cloudy clearing | |
| Precep. mm/ in. | | Noon clear | Aftern. clear | |
| Snowfall/-Depth in/ in. | | Eve. clear | Night clear | |



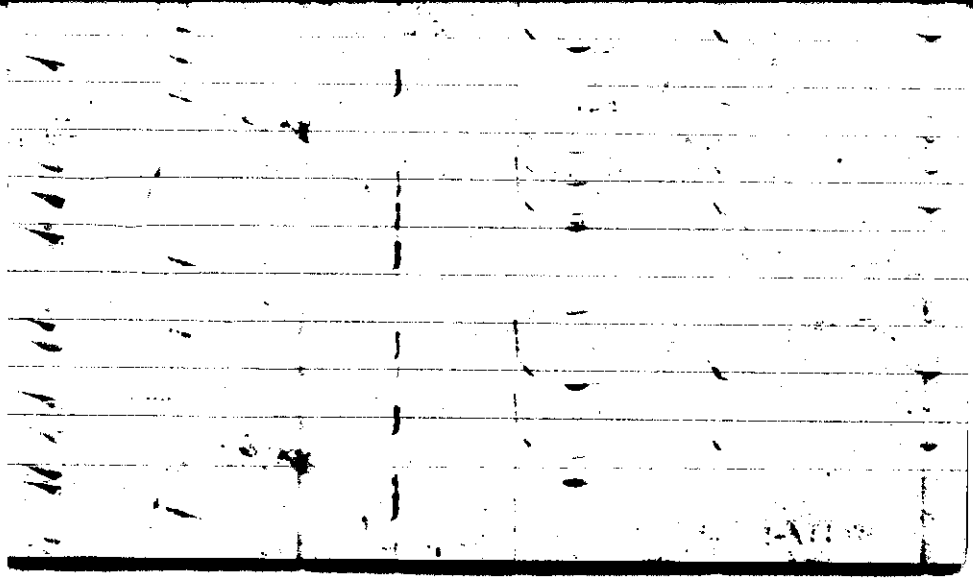
| | | | | |
|----------------------------|----------------|-----------------------------|------------------------------------|--|
| Max. 81.8 | Wind F SW 4 | Barom. t 28 | General Obs. 7 ^h ∞ = | |
| Min. 60 | Vis. km. 8 | p 28.78 | | |
| Dry 62 | Clouds sb | p(red.) 28.65 | | |
| Wet | Ac | | | |
| R.H. 91 | Ac | Morn. cloudy to overcast | Foren. cloudy | |
| Precip. mm/ in. | | Noon cloudy | Aftern. cloudy to partly cloudy | |
| Snowfall/-Depth in/ in. | | Eve. partly cloudy | Night partly cloudy | |



STATE COLLEGE, Pa. Date SEP 26 1941

Time
0705

| | | | | |
|----------------------------|-----------------|------------------------------------|----------------------------------|--|
| Max. 25 | Wind F WNN 3 | Barom. t 73 | General Obs. 7 ^h ∞ | |
| Min. 56.5 | Vis. km. 9 | p 28.86 | | |
| Dry 59 | Clouds 6 | p(red.) 28.74 | | |
| Wet | ci flocc | | | |
| R.H. 83 | Sb Ac Sc | Morn. cloudy | Foren. cloudy | |
| Precip. mm/ in. | | Noon partly cloudy | Aftern. partly cloudy | |
| Snowfall/-Depth in/ in. | | Eve. ci flocc ci den fair cc ac | Night fair to clear | |

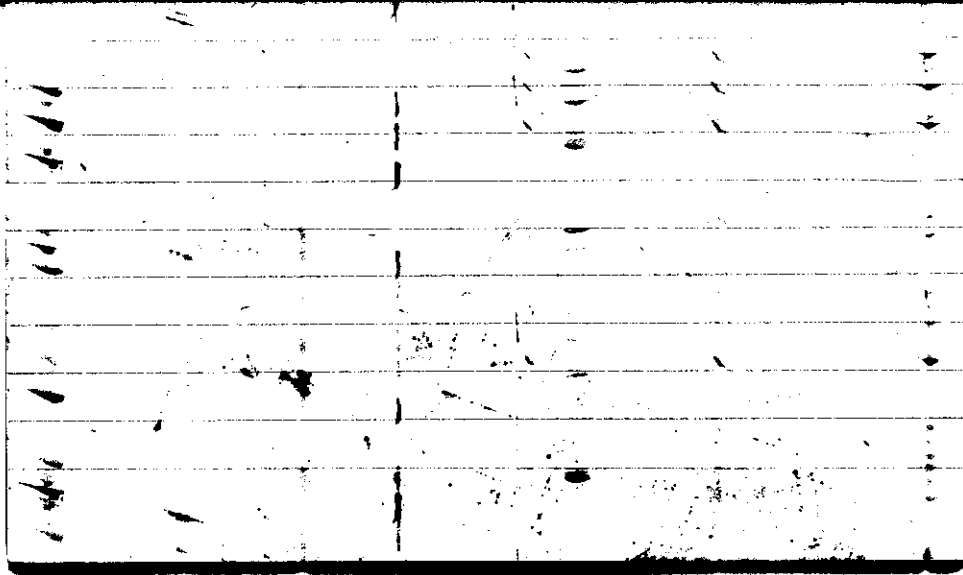


STATE COLLEGE, Pa. Date

SEP 27 1941

Time
0700

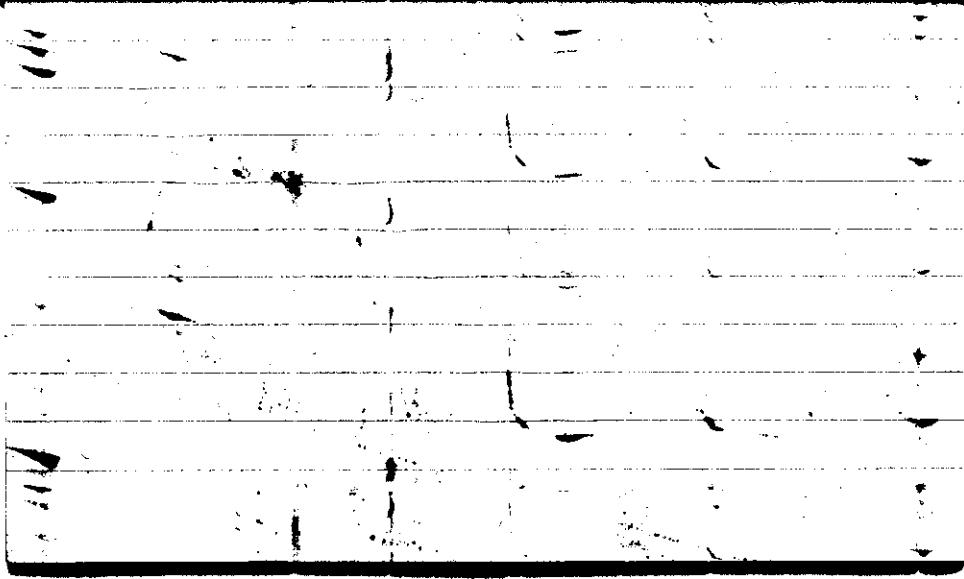
| | | | | |
|----------------------------|----------------|--|---|--|
| Max. 64.8 | Wind F W 1 | Barom. t 70 | General Obs. 7 ^h ∞ L ^o | |
| Min. 38.5 | Vis. km. 10 | p 29.11 | | |
| Dry 45.5 | Clouds / | p(red.) 2900 | | |
| Wet | | | | |
| R.H. 90 | | Morn. clear | Foren. clear | |
| Precip. mm/ in. | | Noon " | Aftern. " | |
| Snowfall/-Depth in/ in. | | Eye. <i>in flux at</i> <i>fair in den</i> | Night <i>fair</i> | |



STATE COLLEGE, Pa. Date SEP 28 1941

Time
0705

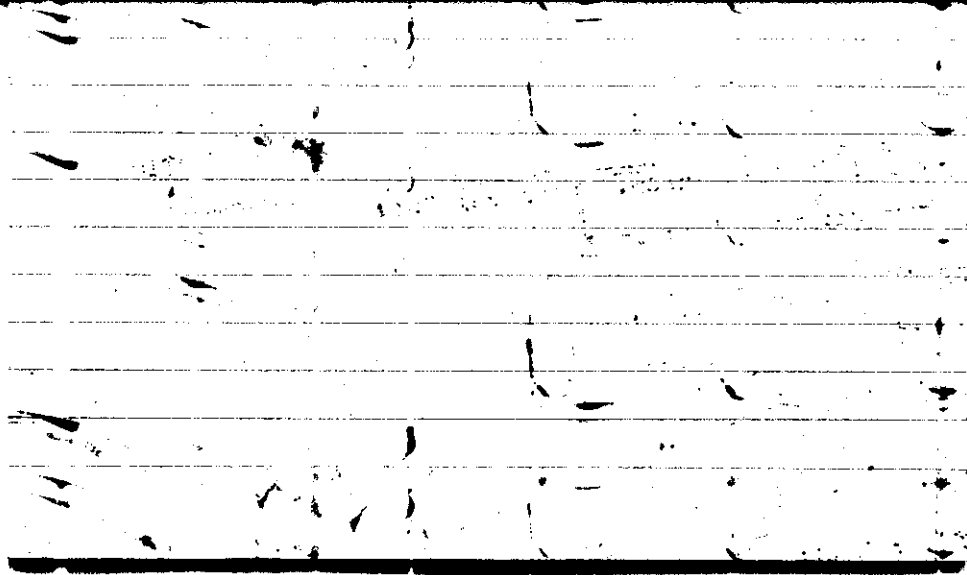
| | | | | |
|----------------------------|---------------------|------------------------------|---------------------------------------|--|
| Max. 70.2 | Wind P W 1 | Barom. t 71 | General Obs. | |
| Min. 43.8 | Vis. km. 8 | p 29.05 | 7 ^h ∞ = 12-13 1430-1530 | |
| Dry 47.5 | Clouds 5 | p (red.) 28.94 | ●° 2150-2210 ▽ | |
| Wet | ci fil ci flacc. | | | |
| R.H. 98 | cs as | Morn. partly cloudy | Foren. partly cloudy | |
| Precip. mm/ in. | | Noon " (ci flacc, fil) cc | Aftern. " " | |
| Snowfall/-Depth in/ in. | | Eve. partly cloudy | Night cloudy, rain shower | |



STATE COLLEGE, Pa. Date SEP 29 1941

Time
0700

| | | | |
|---------------------------------|----------------|------------------|---------------------------------------|
| Max. 81.2 | Wind F NE 3 | Barom. t 70 | General Obs. |
| Min. 47.5 | Vis. km. 20 | p 29.15 | 15:30 ① - 16 ¹⁵ |
| Dry 51.0 | Clouds ? | p(red.) 29.04 | 20 ³⁰ - 22 ⁰⁰ ② |
| Wet | St Sc | | |
| R.H. 75 | Ac | Morn. cloudy | Foren. cloudy to overcast |
| Precip. 0.5 mm / 0.02 in. | | Noon " | Aftern. cloudy (ac, cs, co net) |
| Snowfall/-Depth — in / — in. | | Eve. cloudy | Night cloudy |



STATE COLLEGE, Pa. Date SEP 30 1941

Time
0700

| | | | |
|---------------------------|----------------|-------------------------------|--|
| Max. 58.3 | Wind F NW 2 | Barom. t 73 | General Obs. 7 ^h ∞ 15 ³⁰ 16 ¹⁰ |
| Min. 38.5 | Vis. km. 12 | p 29.16 | |
| Dry 41.5 | Clouds 9 | p (red.) 29.05 | |
| Wet | ac as | | |
| R.H. 92 | | Morn. overcast with buds | Foren. cloudy ^{as den} _{ac as} |
| Precip. mm/ in | | Noon cloudy to pthy cloudy | Aftern. cloudy to pthy cloudy |
| Snowfall/-Depth in/ in | | Evs. cloudy | Night cloudy |

