

STATE COLLEGE, Pa. Date

JAN - 1 1942

0700

Max. 33	Wind F NNE 1	Barom. t 71	General Obs. ∞° 0630 * 0-1 0900-1800 • 0-1 1800-2400
Min. 26	Vis. km. 5	p 28.94	
Dry 31	Clouds 10	p(red.) 28.83	
Wet	Ac As		
R.H. 89		Morn. overc. Ac As	Foren. over Ns Snow
Precip.		Noon	Aftern. over snow
Snowfall/-Depth 2.5 in / 2.5 in	mm / T in.	Eve. over rain/sleet	Night over rain

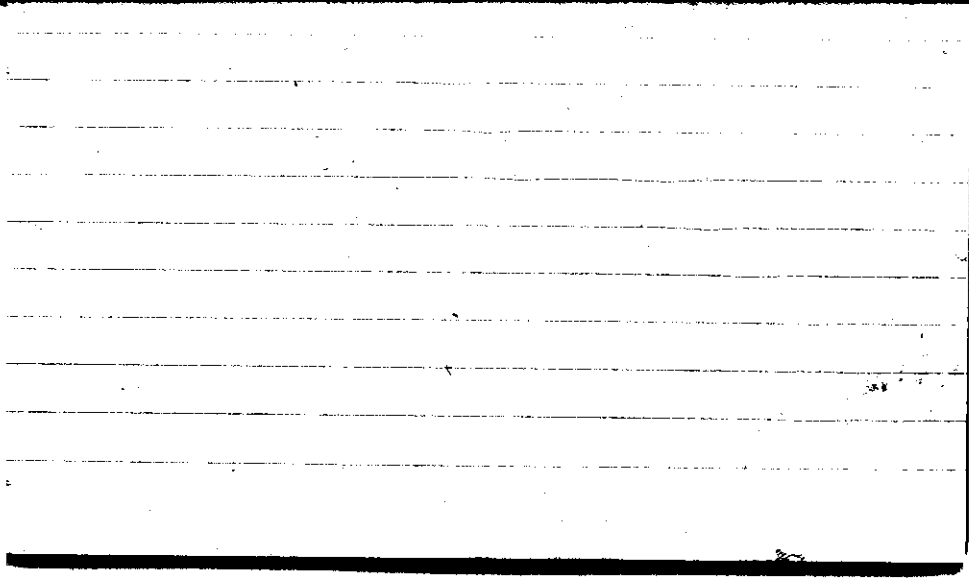
England

30-32

Bidston	4	-3	+11	+8	14	+2.0	3.5
Stonyhurst	2	-	+13	+13	13	+6.5	6.5
Kend	20	-14	+31	+17	45	+0.8	2.2
Oxford	8	-4	+12	+8	16	+1.0	2.0
West Bromwich							
Dysel	3	-3	+0	-3	3	-1.0	1.0
Edinburg							
Sekdalenwic							

(37) -24 +67 +43 91 +1.2 2.5

Max. 44	Wind F W 7	Barom. t 69	General Obs. <input checked="" type="checkbox"/> 1"
Min. 30	Vis. km. 25	28.21	• 0000-0430 * 0945-2400
Dry 42	Clouds 9	p(red.) 28.11	☀ 0714 EST 60 mph.
Wet	Sc		
R.H. 60		Morn. <i>clg</i>	Foren. <i>ov</i>
Precip. 15.0 mm / 0.59 in.		Noon <i>ov</i>	Aftern. <i>clg</i>
Snowfall/-Depth T in / 0.5 in.		Eve. <i>clg</i>	Night <i>clg</i>

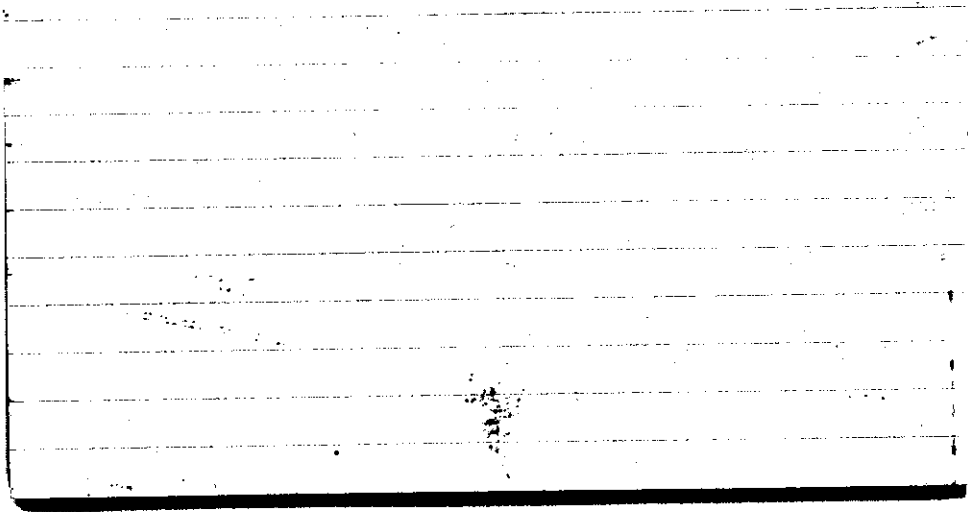


STATE COLLEGE, Pa. Date

JAN 03 1942

Time
0700

Max. 42	Wind P W 3	Barom. t 68	General Obs. <input checked="" type="checkbox"/> 0.5	
Min. 23	Vis.km. 10	P 28.94	* 0000-0130 * 0850-1135 * 1825-2400	
Dry 24	Clouds 10	p(red.) 28.84		
Wet	Sc			
R.H. 60		Morn. <i>ovc</i>	Foren. <i>ovc</i>	
Precip. — mm / T in		Noon	Aftern.	
Snowfall/-Depth 1.5 in / 2.0 in		Eve.	Night	

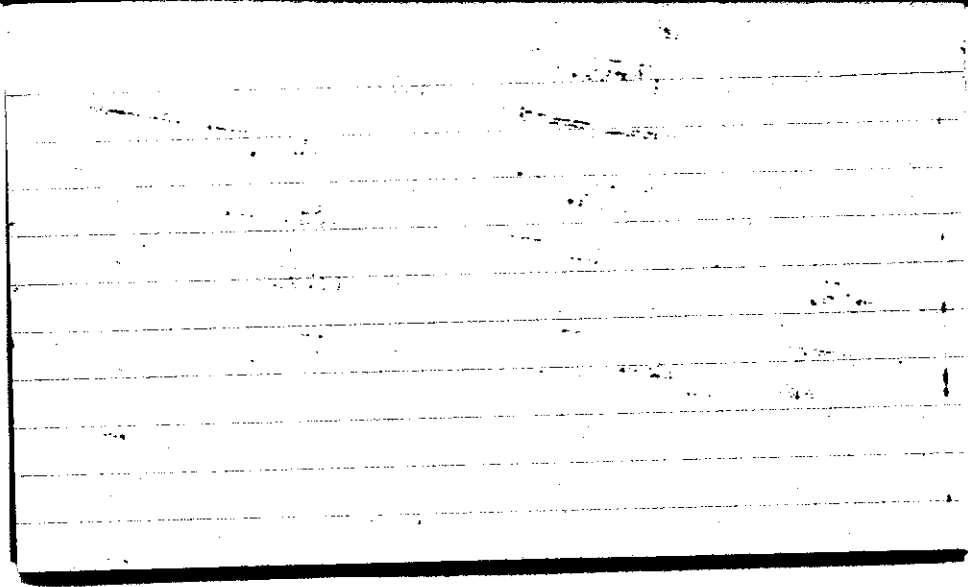


STATE COLLEGE, Pa. Date

JAN 04 1942

Time
0705

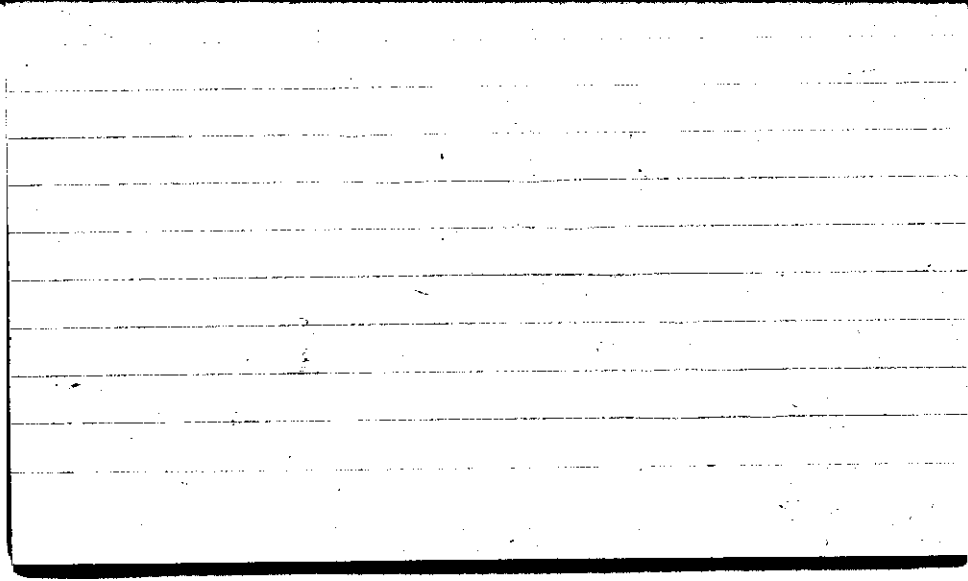
Max. 30	Wind F calm	Barom. t 73	General Obs. * 0-1 0000-12:40#
Min. 24	Vis. km. 2	P 28.78	
Dry 25	Clouds 10	p(red.) 28.66	
Wet	Ns		
R.H. 100		Morn. <i>ovc</i>	Foren. <i>ovc</i>
Precip. 16.9 mm / 0.67 in.		Noon "	Aftern. <i>cldy</i>
Snowfall/-Depth 5.5 in / 7.0 in.		Eve. "	Night <i>ovc</i>



STATE COLLEGE, Pa. Date JAN 05 '942

Time
0700

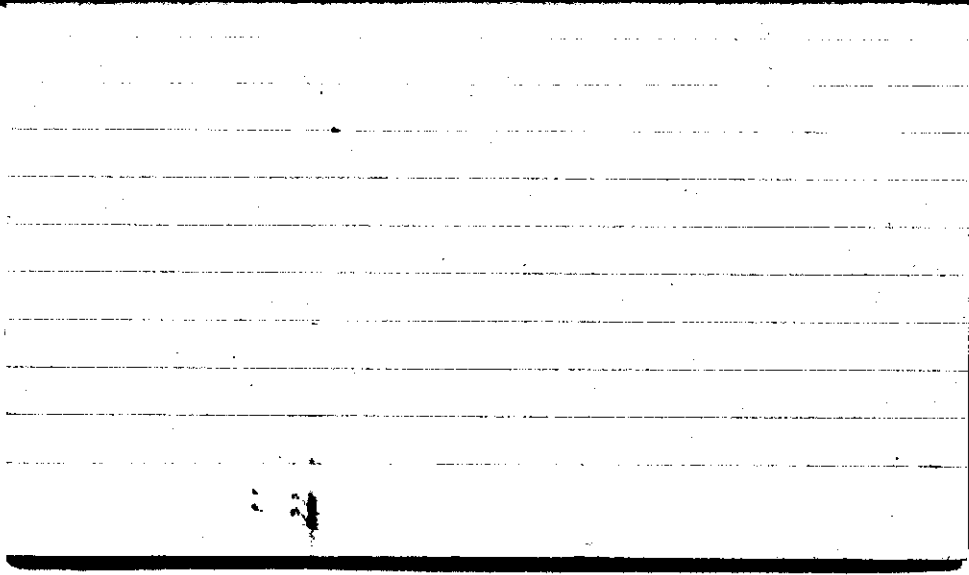
Max. 31	Wind F W 3	Barom. t 73	General Obs. $\overline{27}^{\circ}$ ∞°
Min. 19	Vis. km. 3	p 29.09	
Dry 20	Clouds 9	p(red.) 28.97	
Wet	Ac		
R.H. 70		Morn. <i>clgy</i>	Foren. <i>cl flou ce</i> <i>clgy ce mod.</i>
Precip. 0.2 mm / 0.03 in.		Noon <i>clgy to pky clgy</i>	Aftern. <i>fair ce vent</i>
Snowfall/-Depth in / 6.0 in.		Eve. <i>fair</i>	Night <i>fair</i>



JAN 06 1942

Time
0700

Max. 20	Wind F W 3	Barom. t 74	General Obs. $\times 6''$ \uparrow	
Min. -5	Vis. km. 13	p 29.18		
Dry -3	Clouds 0	p(red.) 29.06		
Wet				
R.H. 70		Morn. <i>clear</i>	Foren. <i>clear</i>	
Precip. mm/ in.		Noon 4	Aftern. 7	
Snowfall/-Depth in/ 5.0 in.		Even. 7	Night 7	



Max. 14	Wind F W 5	Barom. t 71	General Obs. ☒ 5" 0700
Min. -6	Vis. km. 18	p 29.07	↑
Dry 7	Clouds 8	p(red.) 28.96	13h ☉ 14h ☉ - 1530
Wet	<i>ci polaris</i>		
R.H. 36		Morn. <i>ci polaris</i> <i>ci teneb</i> fair	Foren. <i>ci neb</i> <i>ci flocc</i> fair
Precip. / mry / in		Noon pty cldy	Aftern. pty cldy - cldy
Snowfall/-Depth - in / 4.5 in		Eve. pty cldy - cldy	Night " "

Scandin.

30-32

Bergen	2	+6	+6	6	+3.0	3.0
Copenhagen	34	-42	+18	-24	60	-0.7 1.8
C ²	13	-8	+11	+3	19	+0.2 1.5
Helsinki	22	-48	+13	-35	61	-1.6 2.8
Helsinki	27	-49	+16	-33	65	-1.2 2.4

without Hds. (71) -98 +48 -50 146 -0.7 2.1

(98) -147 +64 -83 211 -0.8 2.2

STATE COLLEGE, Pa. Date JAN - 8 1942

Time
0700

Max. +8	Wind F calm 0	Barom. t 64	General Obs. 0° 0700
Min. -8	Vis. km. 3	p 29.08	<input checked="" type="checkbox"/> 45" 0700
Dry -6	Clouds 1	p(red.) 28.99	
Wet	ci pol.		
R.H. 72		Morn. fair ci pol	Foren. fair to pty cldy
Precip. - mm/ - in.		Noon pty cldy	Aftern. pty cldy
Snowfall/-Depth - in/4.0 in.		Eve. " "	Night " "

Yugoslavia & Hungary 20-32

Belgrade 4 -4 +1 -3 5 -0.8 1.2

Fapes 24 -22 +24 +2 46 +0.1 1.9

Budapest 15 -10 +33 +23 43 +1.5 2.9

Motors

(43) -36 +58 +22 94 +0.5 2.2

STATE COLLEGE, Pa. Date JAN - 9 1942

Time
0700

Max. +8	Wind F SW 4	Barom. t 64	General Obs. ☒ 4" 0700
Min. -8	Vis. km. 12	p 29.03	
Dry +6	Clouds 9	p(red.) 28.94	
Wet	Ac		
R.H. 47		Morn. cldy	Foren. cldy
Precip. - mm / - in.		Noon "	Aftern. "
Snowfall/-Depth - in / 4.0 in.		Eve. "	Night "

Germany & Austria

30-32

Hannover	5	-20	+12	-8	32	-0.3	1.3
Königsberg	9	-5	+18	+13	23	+1.4	2.6
Feldberg	14	-50	+6	-44	56	-3.1	4.0
Hohenheim	1	-1		-1	1	-1.0	1.0
Jena	11	-22	+4	-18	26	-1.6	2.4
(60)		-98	+40	-58	138	-1.0	2.3
Graz	(3)	-1	+7	+6	8	+2.0	2.7
Innsbruck	(8)	-6	+12	+6	18	+0.8	2.2
Klagenfurt	22	-39	+28	-11	67	+0.5	3.1
(33)		-46	+47	+1	93	+0.0	2.8
(93)		-144	+87	-57	231	-0.6	2.5

STATE COLLEGE, Pa. Date

JAN 10 1942

Time
0700

Max.	Wind F'	Barom.	General Obs.
19	Calcu 0	t 66	☒ 4" 0700
Min. 5	Vis. km. 8 (?)	p 28.92	*° 0200-0900
Dry 11	Clouds 10	p(red.) 29.82	
Wet	AS		
R.H. 72		Morn. one snow	Foren. pty cldy cu
Precip. mm/ T in.		Noon pty cldy cu	Aftern. " "
Snowfall/-Depth T in/ 4.0 in.		Eve. clear	Night clear

Belgium & Holland

30-32

Utrecht 25 -26 +6 -20 32 -0.8 1.3

De Bilt 34 -24 +45 +21 69 +0.6 2.0

(59) -50 +51 +1 101 +0.0 1.7

STATE COLLEGE, Pa. Date JAN 1 1942

Time
0705

Max. 15	Wind F SW 4	Barom. t 64	General Obs. ☒ 4" 0700
Min. 2	Vis. km. 50	p 28.84	1*° 0800-1115
Dry 10	Clouds 10	p(red.) 28.75	*° 1115-1500 *° 1730-1900 *° 2230-2300
Wet	Ac As		
R.H. 41		Morn. eve	Ac As Foren. cldy
Precip. mm/ T in.		Noon p tly cldy	Aftern. p tly cldy
Snowfall/-Depth T in/ 4.0 in.		Eve. cldy - p tly cldy	Night p tly cldy

S - Asiat Russ.

30-32

Almata	24	-15	+81	+66	96	+2.7	4.0
Andijan	49	-53	+77	+24	130	+0.5	2.6
Samarqand	31	-33	+36	+3	69	+0.1	2.2
Tashkent	31	-60	+21	-39	81	-1.3	2.6

(135) -161 + 215 + 54 376 + 0.4 2.8

STATE COLLEGE, Pa. Date JAN 12 1942

Time
0705

Max. 20	Wind F SW 4	Barom. t 66	General Obs. ☒ 4" 0700
Min. 10	Vis. km. 35	p 29.04	* 1430-1500
Dry 18	Clouds 9	p(red.) 29.94	
Wet	Ac		
R.H. 72		Morn. ci flocc cc cldy to prly cldy	Foren. fair ci fil
Precip. ✓ mm/ T in.		Noon fair	Aftern. cldy snow
Snowfall/-Depth T in/ 3.5 in.		Eve. ovc As	Night ovc As

Single Russ. Stations

Shakimby (76) - 131 + 52 - 79 123 -1.0 2.4

1-Kristke (56) - 63 + 85 + 22 148 +0.4 2.6

STATE COLLEGE, Pa. Date

JAN 13 1942

Time
0700

Max. 37	Wind F SW 1	Barom. t 67	General Obs. <input checked="" type="checkbox"/> 3.5" 0700
Min. 17	Vis. km. 50	p 29.07	*° 02 00-0245
Dry 24	Clouds 8	p(red.) 28.97	
Wet	Sc		
R.H. 66		Morn. cldy	Foren. fair c/fil
Precip. mm/ T in.		Noon fair	Aftern. fair
Snowfall/-Depth T in/2.5 in.		Eve. clear	Night clear

S. - Eur Russia

Tiflis 11 -28 +7 -21 35 -1.9 3.2

Batumi 41 -39 +43 +4 82 +0.1 2.0

~~Mathayaska~~

Simferopol 27 -37 +18 -19 55 -0.7 2.0

Theodosia 25 -19 +15 -4 34 -0.2 1.4

(104) -123 +83 -40 206 -0.4 2.0

STATE COLLEGE, Pa. Date **JAN 14 1942**

Time
0700

Max. 34	Wind F W 4	Barom. t 70	General Obs. <input checked="" type="checkbox"/> 2.5" - 0700
Min. 22	Vis. km. 15	p 28.95	☉° 0700
Dry 26	Clouds 3	p(red.) 28.84	•° 1930-2230
Wet	<i>cipe</i>		
R.H. 79		Morn. <i>clear</i>	Foren. <i>ci pce</i>
Precip. - mm / - in.		Noon <i>pty cldy</i>	Aftern. <i>cc cipe</i> <i>cldy-ovc ac</i>
Snowfall/-Depth - in / 2.0 in.		Eve. <i>cc cldy-ovc</i> <i>pc rain</i>	Night <i>ovc oc</i>

Australia

Sydney (1)	0				0.0	0.0
Adelaide (4)	-15	+4	-11	19	-2.8	4.8
<hr/>						
Melbourne						
Perth (1)		+4	+4	4	+4.0	4.0
Riverside (7)	-17	+8	-9	25	-1.3	3.6
<hr/>						
(13)	-32	+16	-16	48	-1.2	3.7

STATE COLLEGE, Pa. Date JAN 15 1942

Time
0700

Max. 46	Wind F NNW 6	Barom. t 69	General Obs. <input checked="" type="checkbox"/> 2" 0700
Min. 24	Vis. km. 20	p 28.85	10° 0100-0615
Dry 24	Clouds 10	p(red.) 28.74	*° 2030-2400
Wet	Sc		
R.H. 72		Morn. or Sc	Foren. cldy
Precip. mm/ T in.		Noon cldy	Aftern. Ac:ls cldy-or Ec
Snowfall/-Depth T in/ 1.5 in.		Eve. or	Night or - Snow

Japan

Kobe	47	-42	+76	+34	118	+0.7	2.5
Niigatsawa	66	-99	+86	-13	185	-0.2	2.8
Nagasaki	30	-25	+42	+17	67	+0.6	2.2
Nagoya	59	-40	+173	+133	213	+2.2	3.6
Osakani	13	-17	+33	+16	50	+1.2	3.8
Osaka	53	-77	+109	+32	186	+0.6	3.5
Saitohu	5	-6	+13	+7	19	+1.6	3.8
Tokyo	30	-49	+23	-26	72	-0.9	2.4
	(303)	-355	+555	+200	910	+0.7	3.0

STATE COLLEGE, Pa. Date JAN 16 1942

Time
0700

Max. 35	Wind F NW 4	Barom. t 69	General Obs. 15" - 0700
Min. 22	Vis. km. 80	p 28.97	*° 0000 - 0430
Dry 22	Clouds 3	p (red.) 28.86	
Wet	Fc		
R.H. 63	ci polar	Morn. pty cldy	Foren. clear
Precip. 0.1 mm / T in.		Noon clear	Aftern. ci pcpus fair pte ci fil ci pcpus
Snowfall / -Depth T in / 1.0 in.		Eve. fair	Night fair

India

Hyderabad	13	-19	+11	-8	30	-0.6	2.3
Bombay	26	-46	+25	-21	71	-0.8	2.7
Koduvallur	2	-1	+6	+5	7	+2.5	3.5
Calcutta	7	-9	+16	+7	25	+1.0	3.6
<u>Srinagar</u>							
Dehra Dun	2	-14	/	-14	14	-7.0	7.0
Colombo	5	-14	/	-14	14	-2.8	2.8
(55) -103 +58 -45 161 -0.8 2.9							

STATE COLLEGE, Pa. Date

Jan 17-1942

Time

0700

Max. 27	Wind F Calms 0	Barom. t 70	General Obs. ○ 0700
Min. 10	Vis. km. 8	29.24	☒ 1" -0700
Dry 10	Clouds 0	p(red.) 29.13	16 ^h 0 1630 (○) -17 ^h
Wet -			
R.H. 75		Morn. clear	Foren. clear
Precip. - mm/ - in.		Noon fair	Aftern. or pre. a fil aime a den fair a fil a floor a fil a floor
Snowfall/Depth - in/ 07 in.		Eve. fair	Night fair

Monday (5) - 5 + 16 21 + 2.2 42
+ 11

9
E
8

STATE COLLEGE, Pa. Date

JAN 18 1942

Time

0700

Max. 38	Wind F Caln 0	Barom. t 72	General Obs. ∞° 0700
Min. 10	Vis. km. 6	p 28.95	<input checked="" type="checkbox"/> 3/4" -0700
Dry 32	Clouds 8	p(red.) 28.84	1000 (0) Noon : 01 - 1130
Wet	Ac		
R.H. 62		Morn. cldy ac	Foren. ac pty cldy in neb cc
Precip. mm/ - in.		Noon pty cldy	Aftern. pty cldy
Snowfall/-Depth - in/ T in.		Eve. pty cldy ac	Night cldy ac

Greenland

30-32

Scoresby Sound (24) -19 +46 +27 65 +11 2.7

STATE COLLEGE, Pa. Date **JAN 19 1942**Time
0700

Max. 54	Wind F calm 0	Barom. t 73	General Obs. ☐ 0500-1600 ☑ T 0700
Min. 32	Vis. km. 2	p 28.70	• ⁰⁻¹ 0100-0645 • ⁰ 1400-1705
Dry 39	Clouds 10	p(red.) 28.58	16h = 1-2 -18h
Wet	Sc St		
R.H. 100		Morn. ovc Sc lgt fog	Foren. ovc lgt fog
Precip. 4.2 mm / 0.16 in.		Noon ovc	Aftern. cloudy ground fog rain
Snowfall/-Depth - in / T in.		Eve. ddy gr. fog	Night oc

Mexico

30-32

Tacubaya (1)

+ 2.0 2.0

STATE COLLEGE, Pa. Date

JAN 20 1942

Time

0700

Max. 45	Wind F NW 4	Barom. t 72	General Obs. • { 0210-0320 • { 0530-0615 *° { 0800-1410 { 2130-2400	
Min. 33	Vis. km. 20	p 28.78		
Dry 33	Clouds 10	p(red.) 28.67		
Wet	Sc			
R.H. 73		Morn. ovc Sc	Foren. ovc Snow	
Precip. 5.0 mm/0.19 in.		Noon ovc	Aftern. ovc Sc co	
Snowfall/-Depth T in/T in.		Eve. ovc	Night ovc Snow	

N - Ann West

30-32

Berkley	12	-18	+11	-7	29	-0.6	2.4
Richt	9	-29	+1	-28	30	-3.1	3.3
Tmason	9	-3	+28	+25	31	+2.8	3.4
(30)	-50	+40	-10	90		-0.3	3.0
Sitten	2	/	+4	+4	4	+2.0	2.0
Victoria	7	-14	+7	-7	21	-1.0	3.0
(9)	-14	+11	-3	25		-0.3	2.8
(39)	-64	+51	-13	115		-0.3	3.0

STATE COLLEGE, Pa. Date **JAN 21 1942**

Time
0705

Max. 33	Wind F WNW 4	Barom. t 71	General Obs. * ^o { 0000-0415 0600-0620
Min. 30	Vis. km. 20	p 28.80	* ^o 0745-0840
Dry 30	Clouds 10	p(red.) 28.69	* ^o 1130-1140
Wet	as fc		
R.H. 79		Morn. ovc snow	Foren. ovc snow - cldy
Precip. mm/ T in.		Noon cldy	Aftern. cldy
Snowfall/-Depth T in/ - in.		Eve. cldy	Night cldy

N-Ann; Middle

30-321

Ann Arbor	3	-9	+10	+1	19	+0.3	6.3
Chicago	2	-	+3	+3	3	+1.5	1.5
Cincinnati	2	-3	-	-3	3	-1.5	1.5
Denver	<hr/>						
Lawrence	<hr/>						
St Louis	21	-46	+16	-30	62	-1.4	3.0

(28) -58 +29 -29 87 -1.0 3.1

STATE COLLEGE, Pa. Date JAN 22 1942

Time

0700

Max.	Wind F	Barom.	General Obs.
33	calm	t 71	70° ∞°-1
Min.	Vis. km.	p	
27	8	28.78	
Dry	Clouds	p(red.)	
29	10	28.67	
Wet			
	st		
R.H.	☉	Morn.	Foren.
70	☉	ok	cldy
Precip.	mm/ T in.	Noon	Aftern.
-	-	cldy	cldy
Snowfall/-Depth	Eve.	Night	
- in/ - in.	ptly cldy - fair	clear to cloudy	

STATE COLLEGE, Pa. Date **JAN 23 1942**

Time

0700

Max. 39	Wind F W 4	Barom. t 70	General Obs. 0700 00°
Min. 28	Vis. km. 15	p 28.76	
Dry 34	Clouds 10	p(red.) 28.65	
Wet	sc		
R.H. 78		Morn. over today	Foren. cldy - pty cldy
Precip. mm/ - in.		Noon fair	Aftern. clear
Snowfall/-Depth - in/ - in.		Eve. clear	Night clear

STATE COLLEGE, Pa. Date

JAN 24 1942

Time

0700

Max. 49	Wind F SW 2	Barom. t 70	General Obs. 0700 00° 0'
Min. 34	Vis. km. 9	p 28.69	
Dry 38	Clouds 2	p(red.) 28.58	
Wet	as ae		
R.H. 85		Morn. pty cldy	Foren. pty cldy
Precip. — mm/ — in.		Noon co flocc fair co den	Aftern. pty cldy cldy ss
Snowfall/—Depth — in/ — in.		Eve. cldy co	Night cldy co

47

Vere Cong(25) -24 +71 95 +1.9 3.8

5	4	5				(3)
5	-4	6				-6
5	7					+13
-2	0					+7
4						19
-4						+2.3
-1						6.3
3						
8						
-2						
2						
-5						
5						
-6						
8						
0						
3						
2						

STATE COLLEGE, Pa. Date **JAN 25 1942**

Time
0700

Max. 51	Wind F NE 1	Barom. t 72	General Obs. ≡° 0630 — ° 0630
Min. 31	Vis. km. 3	28.69	13⁰⁰ - 13³⁰ ☉
Dry 31	Clouds 8	p(red.) 28.58	
Wet	Co		
R.H. 98	Ac	Morn. Co ac	Foren. cldy to p.cldy
Precip. mm/ — in.		Noon cldy ac coneb	Aftern. p.cldy
Snowfall/-Depth — in/ — in.		Eve. p.cldy - cldy	Night ovc

-142

Toronto (55°) -189 + 47 236 - 2.6 4.3

-5	-7	-3	0	-1			
-5	1	-6	7	-1			(30)
-3	-4	-6	-5	-1			
2	-7	-7	2	-1			- 48
-3	-9	-8	-1	-1			+ 48
3	-3	-5	-1	-1			
-7	9	-3	0	-1			- 0
-1	-6	-8	0	2			
-5	-7	-2	-3	7			
-7	7	-4	1	-1			96
-6	7	-1	4	-1			
5	-1	-8	-3				0.0
-7	2	-8	3				
-1	4	-6	-1				3.2
-1	-1	-5	5				
7	-7		1				
-5	-4		-5				
-5	0		-4				
-5	0		6				
-3	0		5				

STATE COLLEGE, Pa. Date JAN 26 1942

Time

0705

Max. 40	Wind F Calu 0	Barom. t 71	General Obs. <input checked="" type="checkbox"/> T 30900 \equiv° 0700
Min. 31	Vis. km. 3	p 28.72	* 0045-0320
Dry 34	Clouds 10	p (red) 28.61	0800g - 1500
Wet	St		
R.H. 98		Morn. ovc-st	Foren. ovc st drizzle
Precip. 0.4 mm / .02 in.		Noon ovc drizzle	Aftern. ovc drizzle
Snowfall/-Depth 0.2 in / T in.		Eve. ovc	Night ovc

Tortosa (46)			+131	-31 + 162 = 1.93	+2.8	4.2
8	9	0	1			(5)
-2	4	-2				-5
5	4					
9	3	4				+7
9	2	3				
-3	8	-1				+2
5						
7	2					
4	4					12
-6	5					+0.4
4	6					
1	-4					2.4
3	-5					
-2	-5					
4	2					
1	0					
6	2					
7	-2					
8	0					

STATE COLLEGE, Pa. Date

JAN 27 1942

Time

0705

Max. 35	Wind F W 1	Barom. t 70	General Obs. = 0700
Min. 33	Vis. km. 3	p 28.78	9 0100-0640 1600 0 -1640
Dry 33	Clouds 10	p(red.) 28.67	(*) 1900-2200
Wet	St		
R.H. 93		Morn. ovc lgt fog	Foren. cldy lgt fog
Precip. / mm/ T in.		Noon pty cldy haze	Aftern. pty cldy oo co flocc
Snowfall/-Depth - in/- in.		Eve. cldy co	Night ovc co sky ☐

Trevizo (1) ⁺³ / +3 3 +3.0 3.0
 3 5 4
 -3
 -4
 -2
 -9
 +5
 -4
 14
 -1.0
 3.5

STATE COLLEGE, Pa. Date **JAN 28 1942**Time
0700

Max. 42	Wind F NE 4	Barom. t 69	General Obs. ≡ 0700
Min. 31	Vis. km. 1	P. 28.67	X 0130-0530
Dry 31	Clouds 10	p(red.) 28.57	* 0530-1100
Wet	AS		
R.H. 100		Morn. ovc fog snow	Foren. ovc fog snow
Precip. mm / T in.		Noon ovc	Aftern. ovc to cldy - pc
Snowfall/-Depth 0.2 in / T in.		Eve. cldy - pty cldy sc	Night fair to clear

Triest

2

0

1

(4)

-1

+3

+2

4

+0.5

1.0

STATE COLLEGE, Pa. Date

JAN 29 1942

Time

0705

Max. 34	Wind F NNW 2	Barom. t 67	General Obs. <input checked="" type="checkbox"/> T-0700	
Min. 13	Vis. km. 80	p 28.93		
Dry 13	Clouds 0	p(red.) 28.83		
Wet	-			
R.H. 60		Morn. clear	Foren. clear	
Precip. 0.2 mm / 0.01 in.		Noon clear	Aftern. fair - ci polari	
Snowfall/-Depth - in / T in.		Eve. fair ci pol	Night fair ci pol.	

Notes

2
0

(2)

/

+2

+2

2

+1.0

1.0

STATE COLLEGE, Pa. Date **JAN 30 1942**

Time
0700

Max. 31	Wind F calm	Barom. t 68	General Obs.	
Min. 13	Vis. km. 35	p 28.96		
Dry 19	Clouds 5	p(red.) 28.86		
Wet	Ac			
R.H. 68	ci neb ci pol	Morn. pty cldy	ac ci pol ci neb	Foren. pty cldy
Precip. mm/ - in.		Noon pc	ac	Aftern. cldy Ac cc
Snowfall/-Depth in/ - in.		Eve. cldy		Night cldy

Smere (69) = 157 + 73 230 - 12.3.3

-8	-3	2	-8	3			19
-1	5	1	0	3			
-1	-1	3	-2	1			-41
5	6	-2	1	2			+14
-1	-5	0	0	1			
-3	-1	-7	0	6			-27
-2	3	2	0	3			
1	6	0	4	3			55
6	-1	4		3			
-10	2	4		9			-1.4
-4	4	-6		4			
-9	4	-5					2.9
-1	8	0					
2	8	-2					
-2	-8	-3		-1			
-6	-3	-6					
-4	-5	-8					
-4	0	-6		2			
-3	-3	-1		3			
-4	-9	3					

STATE COLLEGE, Pa. Date

JAN 31 1942

Time
0705

Max. 31	Wind F calm	Barom. t 67	General Obs. •° 0640-1145	
Min. 18	Vis. km. 5	p 28.51	☉ 0640-1145	
Dry 29	Clouds 10	p(red.) 28.41	1*1° 1530-1900	
Wet	As		1*1° 1900-2200	
R.H. 82	Fa	Morn. As	Foren. As	
Precip. .15 mm/0.01 in.		over-rain glass No	over-rain glass No	
Snowfall/Depth T in/ — in.		Noon over	Aftern. over rain	
		Eve. over rain snow	Night over snow	

+16
- Suva (2) / +16 16 → 8.0 80
7
9