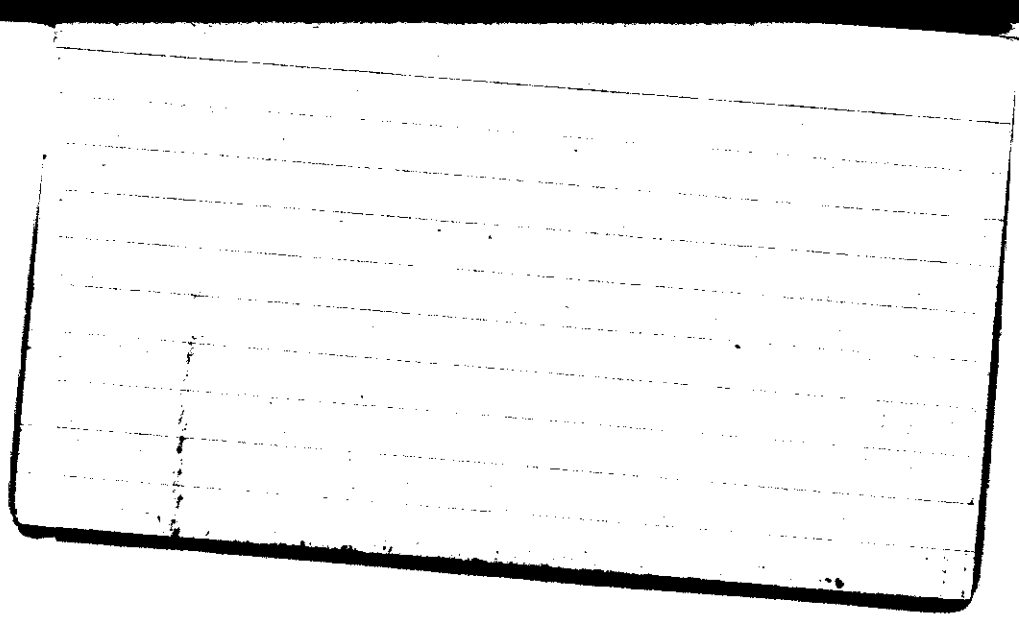


STATE COLLEGE, Pa. Date

MAR 7 1943

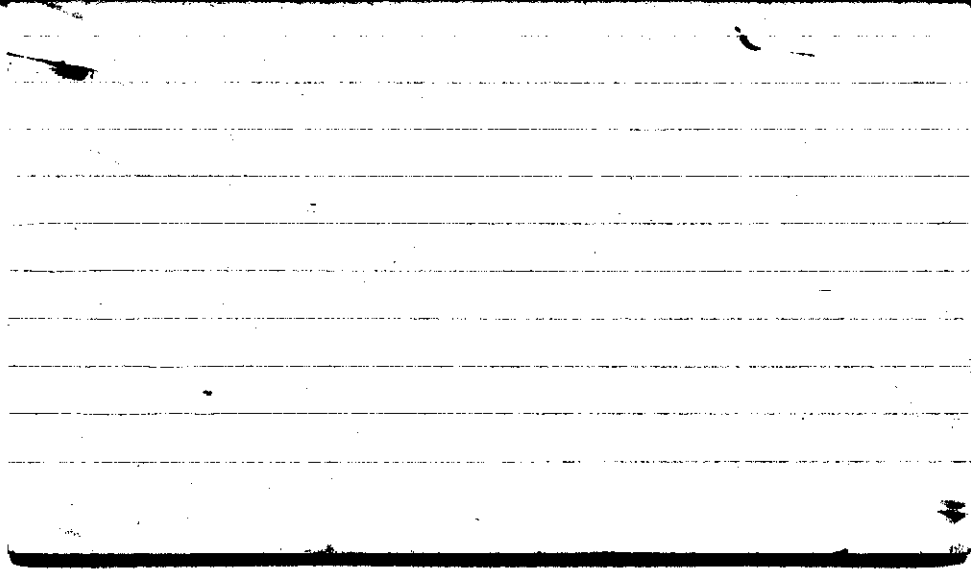
0700

Max. 42	Wind F 51	Barom. t 68	General Obs. 0830 (6)
Min. 18	Vis. km. 25	p 38.84	0900 (0)
Dry 18	Clouds 7	p (red.) 38.74	-1000
Wet 19.8	Ci rad.		
18.3	Ce, Ci, fog.		
R.H. 77		Morn. pty cldy	Foren. cldy
		Ci unc., Ci, fog	Aftern. Fair
Precip. T mm/ T in.		Noon pty cldy	Night
Snowfall/-Depth T in/ T in.		Eve. pty cldy	Much Fair
AM 0730			



Max. 39	Wind F N.3	Barom. t 70	General Obs.	0750-1000 (a)
Min. 14	Vis. km. 20	29.10	1220 * - 1800	1600 - 1620
Dry 14.5/15	Clouds 3	p (red.) 28.99	1800 * - 2000	in mch. in form
Wet 12.5	Ce. cum a pd, cum		2000 - 2100 * -	
R.H. 62	af. l.	Morn. Fair	Foren. pty chng to overcast	
Precip. — mm / — in.		Noon overcast snow	Aftern. over snow	
Snowfall / -Depth — in / — in.		Eve. over snow	Night over snow	

A. B.



STATE COLLEGE, Pa. Date

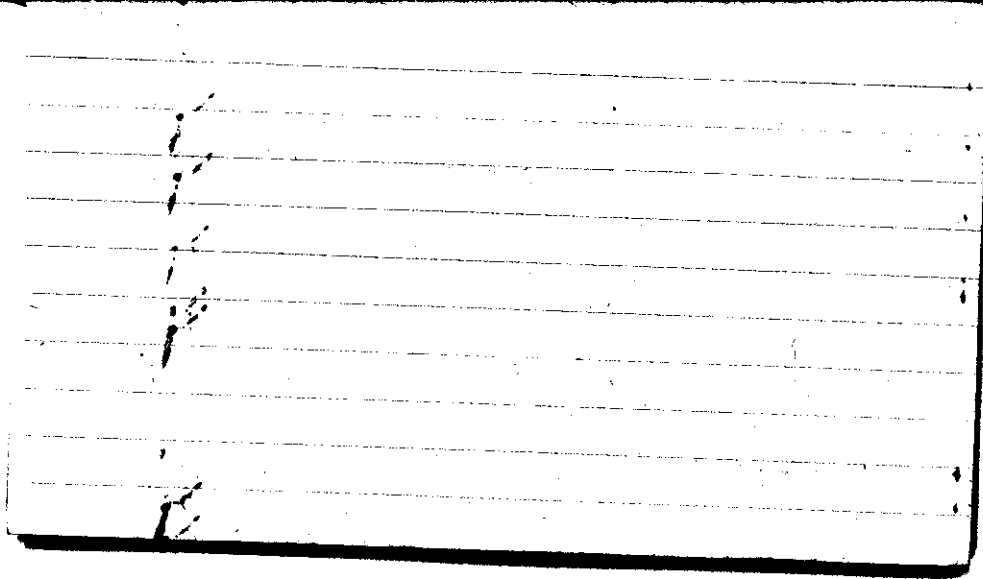
MAR - 3 1943

Time

0700

Max. 22	Wind F N 4	Barom. t 68	General Obs. * 0000-0930	0950 \bar{c} -10 30 ci fl 4 den ci neb.
Min. 11	Vis. km. 0.5	p 28.68	14 1230-1600	
Dry 12	Clouds 10	p(red.) 28.58		
Wet 11.7	Ns			
R.H. 96		Morn. on snow	Foren. on snow	
Precip. 3.0 mm/0.12 in.		Noon dry	Aftern. dry snow	
Snowfall/-Depth 2.8 in/ 2.8 in		Eve. py dry to den	Night clear	

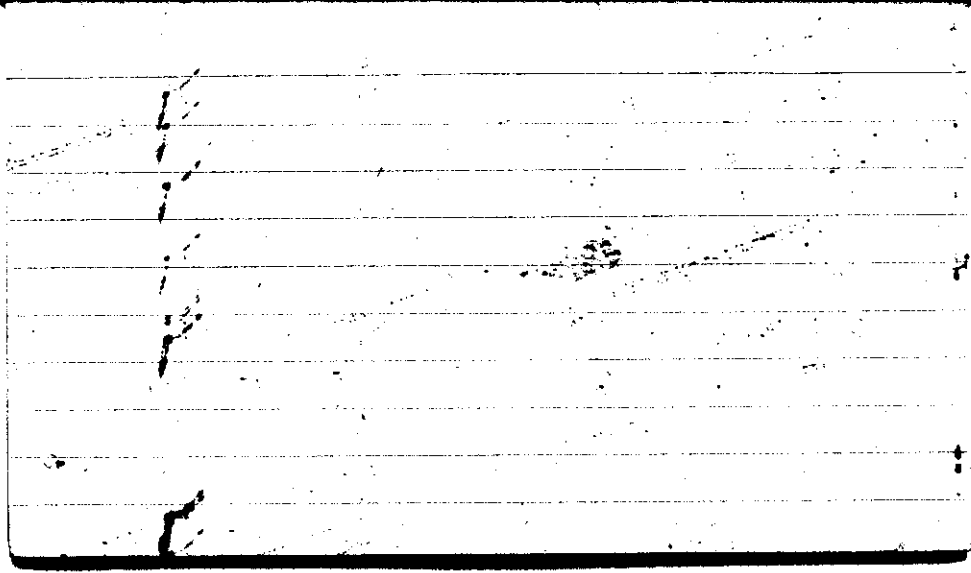
HN



STATE COLLEGE, Pa. Date MAR - 4 1943

Time
0700

Max. 19	Wind F SSW 2	Barom. t 65	General Obs. 0 0	
Min. 1	Vis. km. 8	p 28.94	1700 :0: - 1740	
Dry 4	Clouds 0	p(red.) 28.84		
Wet				
R.H. 75		Morn. clear	Even. clear	
Precip. 0.3 mm / .01 in.		Noon fair	Aftern. fair to light dr ci pt, a few, to none	
Snowfall/-Depth 0.1 in / 2.8 in.		Eve. c. 1/2 in, 1/4 pt c. sub.	Night dr	



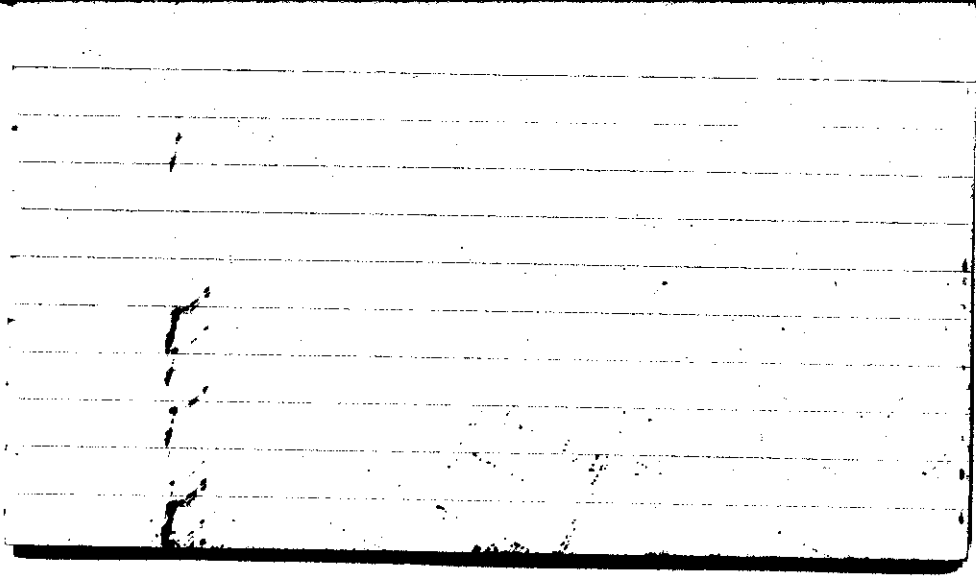
STATE COLLEGE, Pa. Date

MAR - 5 1943

Time
0700

Max. 30	Wind P SW	Bar. on. t 67	General Obs. 1400-1415 <i>2</i>	
Min. 2	Vis. km. 20	28.81		
Dry 30	Clouds 7	p(red.) 28.71		
Wet 25	As Ac			
R.H. 47	Ci fl	Morn. <i>cldy</i>	Foren. <i>cldy</i>	
Precip. — mm/ — in.		Noon <i>ov</i>	Aftern. <i>cldy</i>	
Snowfall/-Depth — in/ 1.5 in.		Eve. <i>cldy</i>	Night <i>ov</i>	

HN



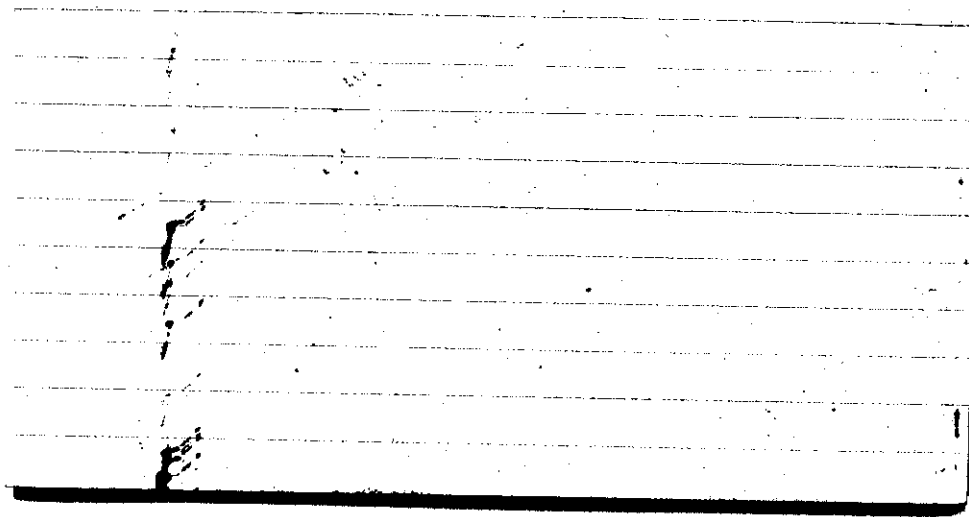
STATE COLLEGE, Pa. Date

MAR - 6 1943

Time

0700

Max.	Wind F	Barom.	General Obs.
35	ESE 4	t 67	0000 X° - 1530 III - 60 mph
Min. 25	Vis. km. 7	p 2882	1530 Δ ² - 1815
Dry 27	Clouds 10	p(red.) 2872	1730 0° - 1830
Wet 26.5	N3		2000 0° - 2200
R.H. 95%		Morn. snow, over	Foren. over snow
Precip. 1.7 mm / 0.7 in.		Noon over snow	Aftern. over snow leet, rain
Snowfall/-Depth 1.0 in / 1.8 in.		Eve. over rain	Night over.
		HN	SPL WR

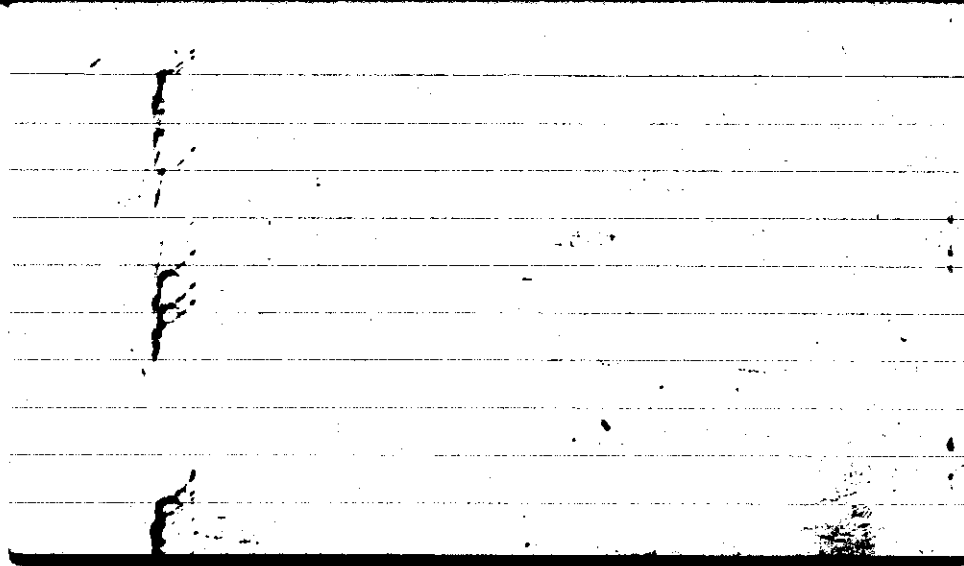


STATE COLLEGE, Pa. Date MAR -7 1943

Time
0700

Max. 36	Wind F W 4	Barom. t 64	General Obs. ∞	
Min. 16	Vis. km. 5	p 28.73	0100 X° - 0200 0300 /4° - 0430 0600 /x/° - 1210	
Dry 16	Clouds 8	p (red.) 28.64		
Wet 14.6	Sc Fm			
R.H. 76		Morn. cldy snow	Foren. cldy	
Precip. 10.9 mm / 0.43 in.		Noon cldy snow	Aftern. cldy	
Snowfall/-Depth 1.0 in / 2.6 in.		Eve. Pt. cldy	Night clear	

HN 0220

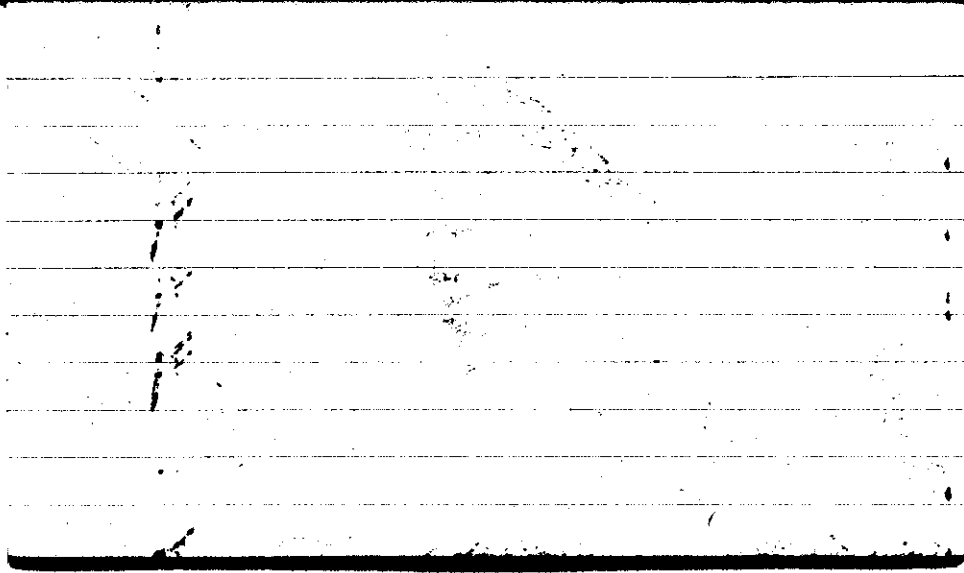


STATE COLLEGE, Pa. Date

MAR - 8 1943

Time
0700

Max. 22	Wind P WNW 3	Barom. t 65	General Obs. <i>∞ W'</i>	
Min. 5	Vis. km. 6	p 29.27		
Dry 8	Clouds 0	p (red.) 29.17		
Wet (7.3)				
R.H. 83		Morn. clear <i>clear</i>	Foren. <i>cldy</i>	
Precip. T mm / T in.		Noon <i>cldy</i>	Aftern. <i>pt cldy</i>	
Snowfall/-Depth T in / 2.0 in.		Eve. <i>clear</i>	Night <i>clear</i>	
<i>N. 7.20</i>				

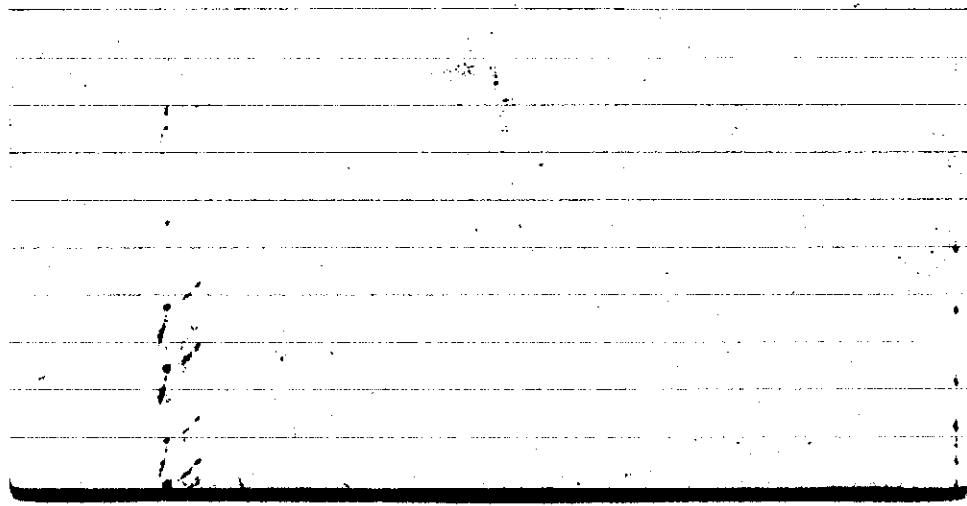


STATE COLLEGE, Pa. Date MAR - 9 1943

Time

0700

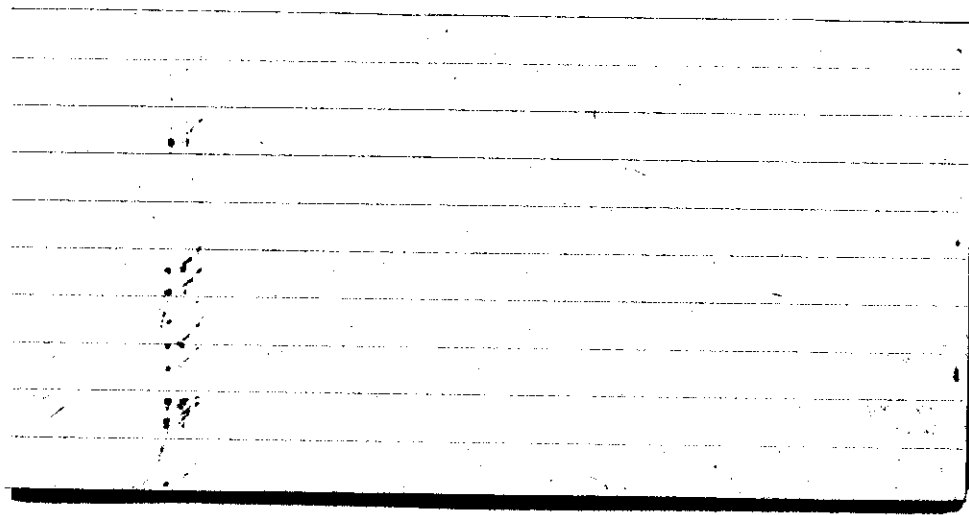
Max. 21	Wind F calm	Barom. t 66	General Obs. \odot W' 0730 \odot -1200	
Min. 3	Vis. km. 9	p 29.57		
Dry 5	Clouds 2	p(red.) 29.47	Pressure 29.51 at 09.13	
Wet (4)	As neb Ci fin.			
R.H. 72		Morn. fair	Morn.	cldy
Precip. — mm/ — in.		Noon over	Aftern.	cldy
Snowfall/-Depth — in/2.0 in.		Eve. cldy	Night	cldy - clearing
YN.				



STATE COLLEGE, Pa. Date MAR 10 1943

Time
0700

Max. 30	Wind F SW 3	Barom. t 66	General Obs. 1435 °;
Min. 4	Vis. km. 25	p 29.30	1500 (o) -1630
Dry 28	Clouds 3	p(red.) 29.20	
Wet 26 1/2	ci pd ci rnt Fr cu		
R.H. 82	Ac	Morn. fair	Even. pty ddy to ddy
Precip. — mm/ — in.		Morn. pty ddy	Aftern. fair ci bkn ci pra co flous
Snowfall/Depth — in/ 2.0 in.		Eve. cldy	Night ddy

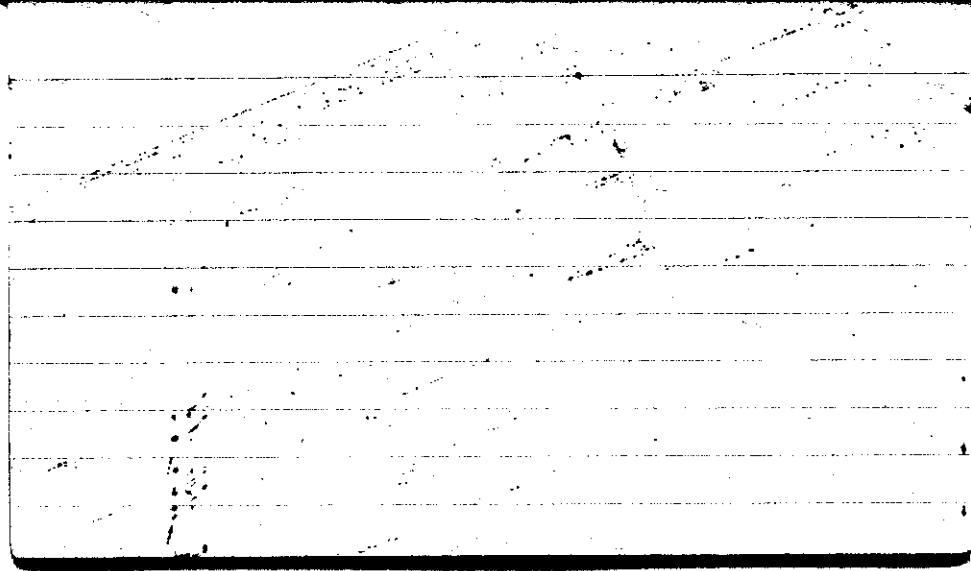


STATE COLLEGE, Pa. Date

MAR 11 1917

Time
0700

Max. 46	Wind F W 3	Barom. t 70	General Obs. 0030-0045 - 0° 1800-1830 - 0° 0045-0055 - 0° 1830-2200 - 0° 0100 - 0320 - 0° 2345-2400 - 0° 0325 - 0420 - 0° 0515 - 0527 - 0° 1145 - 1245 - 0° 1245 - 1800 - 0°
Min. 27	Vis. km. 20	28.95	
Dry 44	Clouds 10	p(red.) 28.84	
Wet 42	Sc, Fc, Ns		
R.H. 85		Morn. Overst.	Foren. Overst.
Precip. 1.5 mm / .06 in		Noon Overst.	Aftern. Overst. Rain
Snowfall/-Depth in / in		Eve. Overst. Rain	Night Overst. Rain
A.P.			

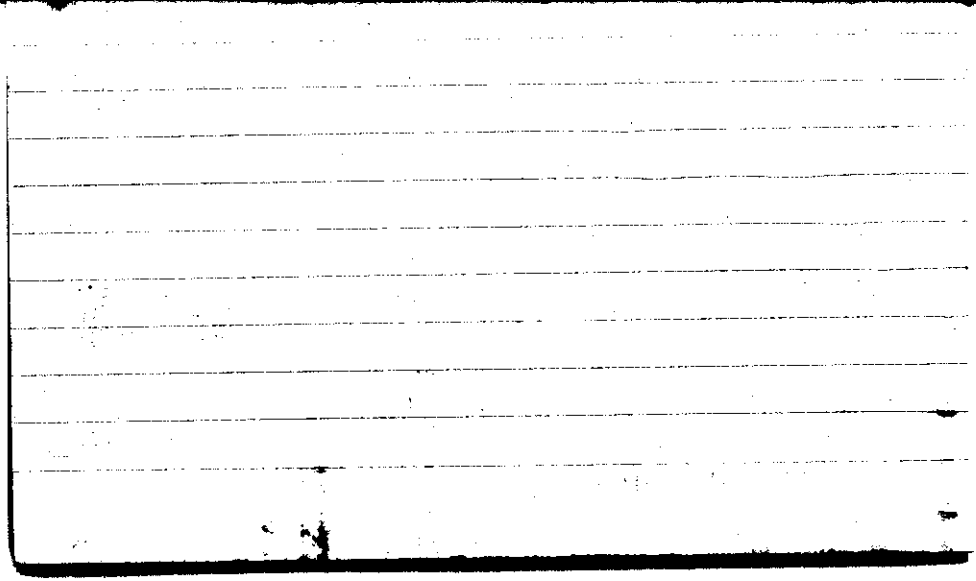


STATE COLLEGE, Pa. Date

MAR 12 1943

Time
0700

Max. 49	Wind F NW 3	Barom. t 72	General Obs. 0000-0030-02 0030-0040-01	☉ 1440- ☉ 1630 ☉ 1945 -2400
Min. 37	Vis. km. 7	p 28.92		
Dry 37 32.5	Clouds 10	p (red.) 28.81		
Wet 35 35.5	ST, Fs			
R.H. 80		Morn. overcast.	Foren. overcast → cloudy	
Precip. 16.2 mm / .64 in.		Noon ^{C. pd., C. F. 11} cloudy → partly cloudy	Aftern. ^{C. pd., C. F. 11} partly cloudy	
Snowfall / -Depth in / in.		Eve. partly cloudy	Night partly cloudy → cloudy	
R.B.				



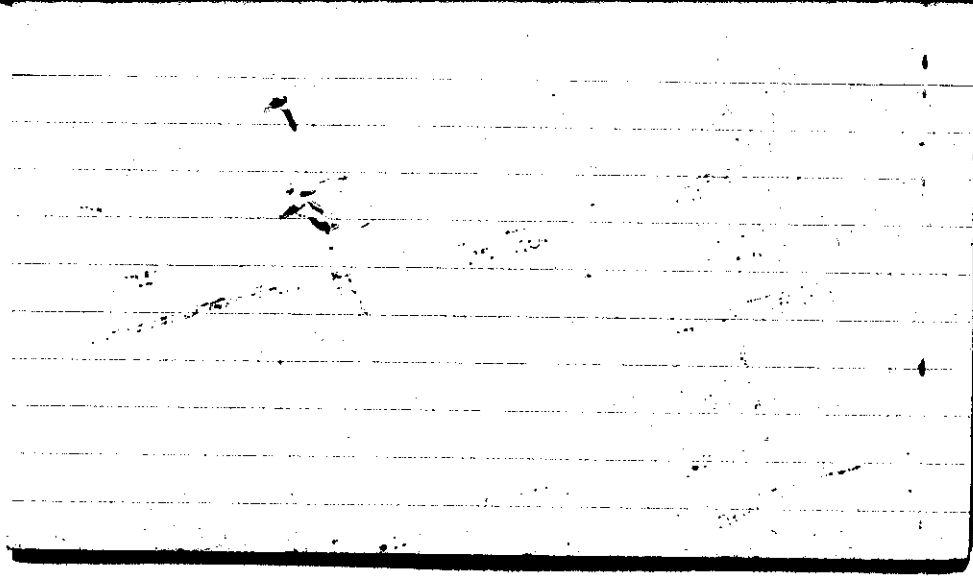
STATE COLLEGE, Pa. Date

MAR 13 1943

Time
0706

Max. 49	Wind P NNE 2	Barom. t 73	General Obs. *° 0625-0750 *° 0800-1200	
Min. 32	Vis. km. p 8	28.99		
Dry 33	Clouds 10	p(red.) 28.87		
Wet 32	As			
R.H. 84		Morn. Ovc. *°	Foren. Ovc. *°	
Precip. T mm/ T in.		Noon Ovc.	Aftern. Clly	
Snowfall/Depth T in/ T in.		Eve. Clly → Pthly Clly	Night Pthly Clly → Pthly	

AB

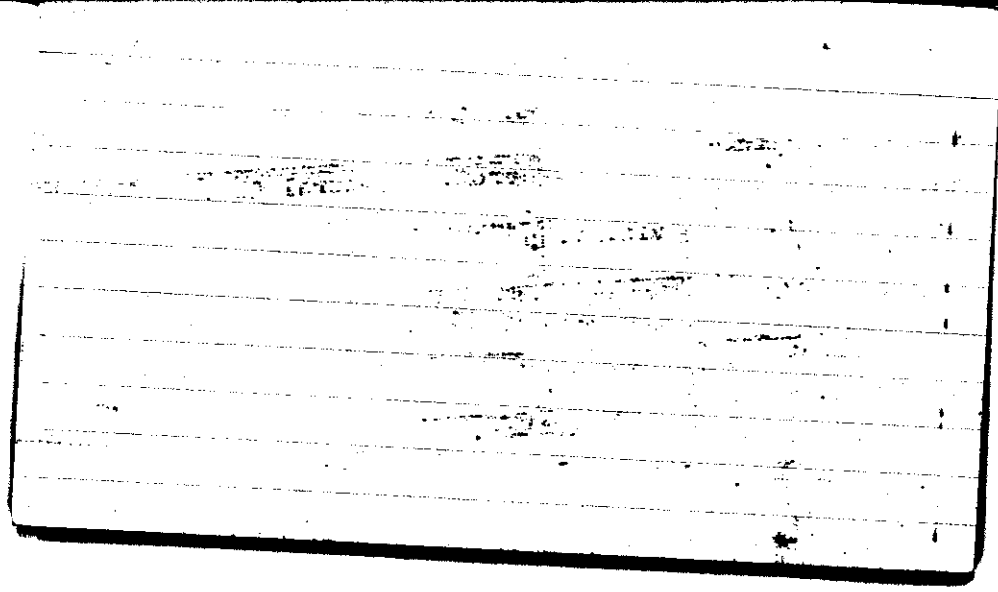


STATE COLLEGE, Pa. Date

MAR 14 1943

Time
0700

Max. 42	Wind F WSW 3	Barom. t 70	General Obs. L' ∞ ①
Min. 27	Vis. km. 9	p 29.29	⊙ 2015-2030
Dry 28	Clouds 2	p(red.) 29.18	⊙ 2025-2400
Wet 27	R. pos, cum C. fil, C. G. etc.		
R.H. 88		Morn. Fair	Foren. Fair → Partly
Precip. .6 mm / .02 in.		Noon Ptlly cldy → Fair	Aftern. Fair → Partly
Snowfall / -Depth in / — in.		Evs. Ptlly cldy → Fair	Night Fair
T.B.			

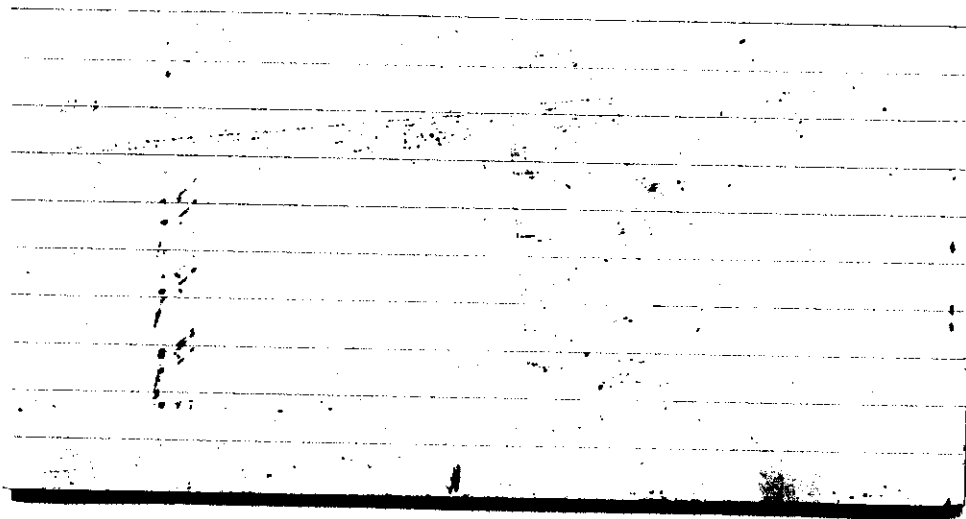


STATE COLLEGE, Pa. Date

MAR 15 1943

Time
0700

Max. 55	Wind F WSW 4	Barom. t 72	General Obs. 0730 (a) -0830 L ^o 0 0830 (a) -1545	
Min. 28	Vis. km. 15	29.15		
Dry 42	Clouds 3	p (red.) 29.03		
Wet	<i>ca, S, N, R</i>			
D. 37				
R.H. 62		Morn. Fair	Foren. fair	
Precip. — mm / — in.		Noon fair	Aftern. pty cly	
Snowfall/-Depth — in / — in.		Eve. cly	Night overcast.	
Ave.				



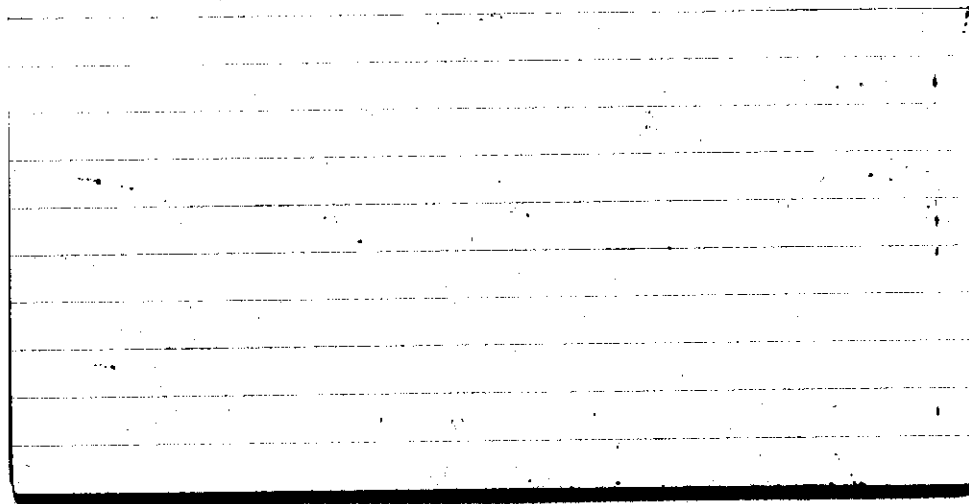
STATE COLLEGE, Pa. Date

MAR 16 1943

Time

6700

Max. 61	Wind F S 3	Barom. t 75	General Obs. 0545-0620 ∇ 0630-0645 ∇ 0645-0700 ∇ 0700-0705 ∇ 0800-0830 ∇ 0830-0900 ∇ 0950-0952 ∇	1910 2000 1948 $\frac{2}{i.Nu}$
Min. 42	Vis. km. 8	p 28.93		
Dry 54	Clouds 10	p(red.) 28.81		
Wet 52	A _s , F _s			
R.H. 86		Morn. Orest. Rain	Foren. Orest.	
Precip. 1.7 mm / .07 in.		Noon Cdy	Aftern. Cdy Cdy	
Snowfall/-Depth - in / - in.		Eve. Cdy → Orest.	Night Orest.	
A. B.				



STATE COLLEGE, Pa. Date

MAR 17 1943

Time
0706

Max. 66	Wind F W 4	Barom. t 76	General Obs. 0800-0815 1325 ☺ 0830-0835 1500 (o) - 0120-0310-01 1515 0515-0535-01 0535-0630-02 0745-0800-0 0810-0830-0 250-02400-0°
Min. 40	Vis. km. 16	28.94	
Dry 41	Clouds 10	p(red.) 28.82	1930 (o)
Wet 37	St, F, H, E		
A.M. 76		ovcst.	over, cldy
Precip. 7.3 mm / .29 in.		cldy	Aftern. cldy
Snowfall/-Depth — in / — in.		Eve. pty cldy	Night cldy → pty cldy
A.B.		0720	




150.8

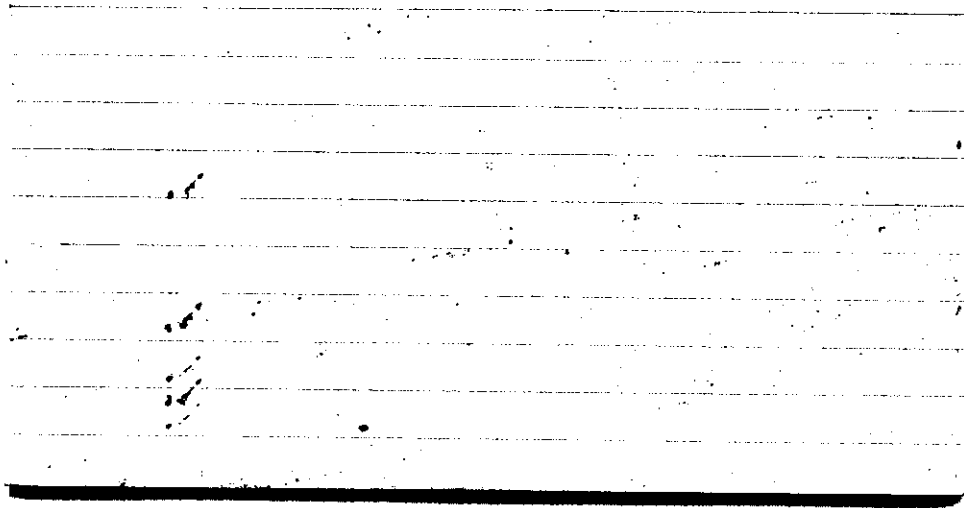
STATE COLLEGE, Pa. Date

MAR 18 1943

Time

0700

Max. 49	Wind F WSW 3	Barom. 70	General Obs. 0000-0015-°	 0705
Min. 38	Vis. km. 25	29.01		1540  1625
Dry 39	Clouds 4	p (rad.) 28.90		1950 
Wet 39.1	Cc, Ci			
32.5	Ci over			
R.H. 48	Cs Ac	Fair → Pcly	Pcly	Pcly cldy
Precip. T mm / T in.		Pcly cldy	Aftern. Pcly cldy	
Snowfall/-Depth in/ in.		Eve. cldy	Night cldy → Ovc.	
A.M.		0715		



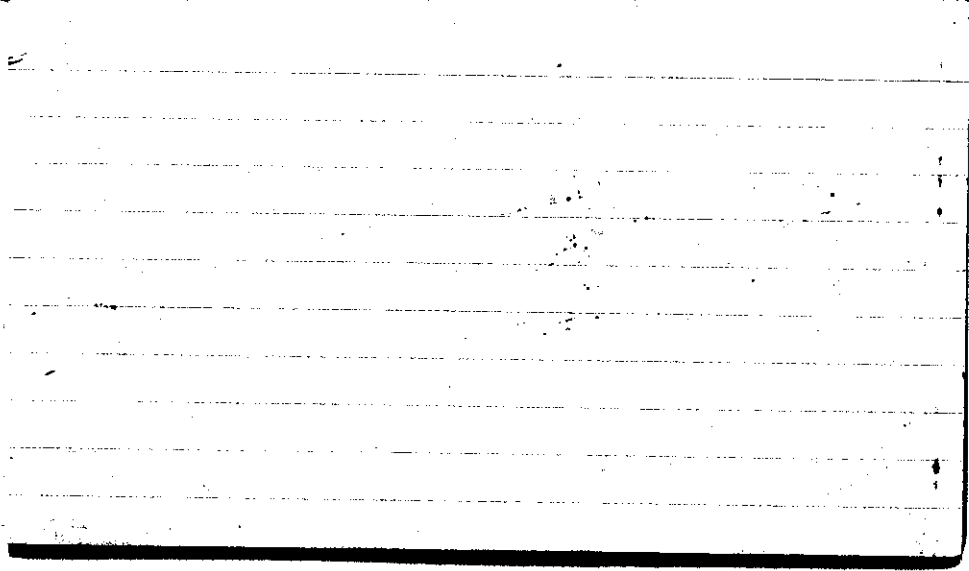
STATE COLLEGE, Pa. Date

MAR 19 1943

Time

0700

Max. 61	Wind F ENEZ	Barom. t 72	General Obs. ∞	
Min. 37	Vis. km. 20	28.85	0245- ∇ -0400	1545- ∇ -1635
Dry 46	Clouds 10	p(red.) 28.74	0430- ∇ -0505	1805- ∇ -1840
Wet 46p	Sc, As.		0710- \bullet -0720	1840- ∇ -2005
464	Ac.		0745- \bullet -0800	2020- ∇ -2320
R.H. 68			1030- \bullet -1045	
			1120- \bullet -1545	
Precip. T mm/ T in.			Morn. Ovc. Rain	Foren. Ovc. Rain
Snowfall/-Depth — in/ — in.			Noon Ovc. Rain	Aftern. Ovc. Rain
			Eve. Ovc. Rain	Night Ovc. Rain
			0700 A.M.	



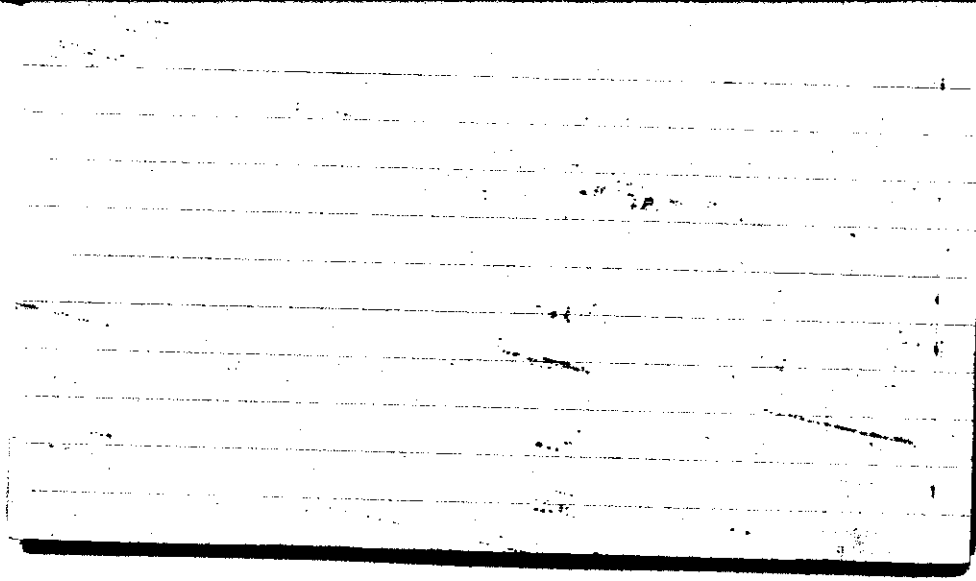
STATE COLLEGE, Pa. Date

MAR 20 1943

Time 0700

Max. 55	Wind F W 5	Barom. t 72	General Obs. 0330 - 0° - 0345	0930
Min. 44	Vis. km. 20	28.71	0410 - 0° - 0415	1015
Dry 46	Clouds 8	p(red.) 28.60		2230
Wet 43.0	Sc, Fe, Cc, Cs, Ci, Fl.			2245
R.H. 77		Morn. Ptlly cldy → cldy	Foren. Ptlly cldy	
Precip. 13.2 mm / 0.52 in.		Noon Ptlly cldy → cldy	Aftern. Ptlly cldy → cldy	
Snowfall / -Depth — in / — in.		Night Pt. cldy	Night Pt cldy	


AM



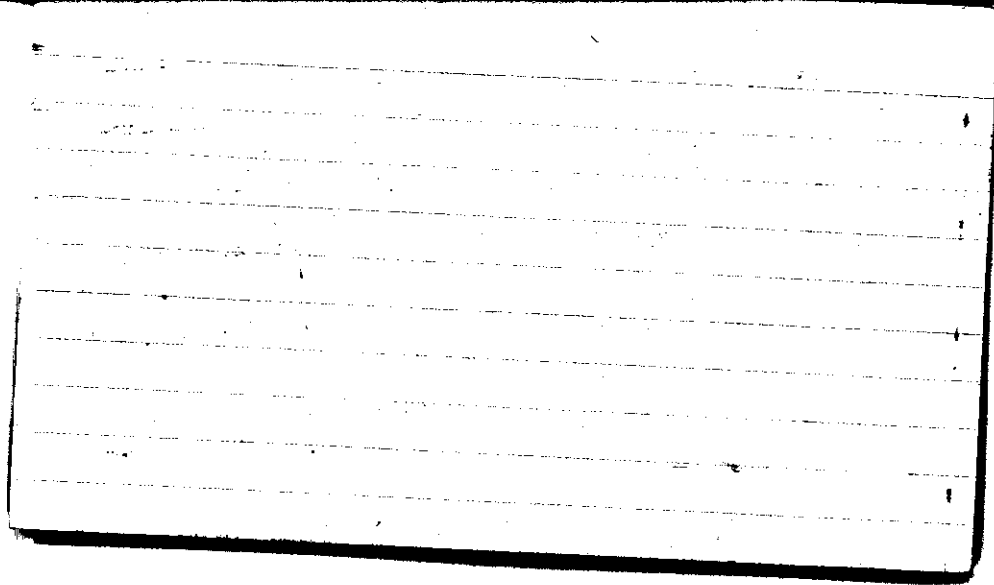
STATE COLLEGE, Pa. Date

MAR 21 1943

Time
0700

Max. 46	Wind P W 2	Barom t 68	General Obs. ∞	 0730-0700 22 ¹ @ -22 ¹ / ₂
Min. 26	Vis. km. 25	P 29.10		
Dry 27	Clouds 3	p(red.) 29.00		
Wet 27.2 23.9	S, Fc Ac lent.			
R.H. 63		Morn. pty CHy → Fair Cs, Cc	Foren. ovc	
Precip. — mm/ — in.		Noon ovc	Aftern. Ovc.	
Snowfall/-Depth — in/ — in.		Eve. Ovc.	Night Ovc.	

AM 0645



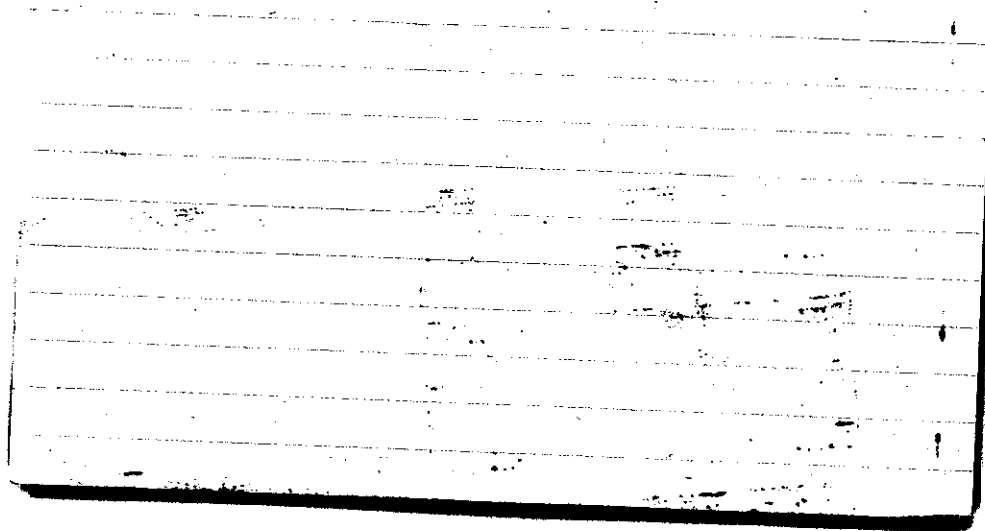
STATE COLLEGE, Pa. Date

MAR 22 1943

Time
0700

Max. 34	Wind NNE 3	Barom. t 65	General Obs. 00	0650	0725
Min. 27	Vis. km. 22	28.93	1920-2400	1200	
Dry 28	Clouds 5	p(red.) 28.84			
Wet 28.8	Cs, Cifil.				
R.H. 45	Ci flo. Ac lent.		Morn. Ptlly cldy → cldy	Foren. cldy → Ptlly cldy	
Precip. — mm/ — in.			Noon Ptlly cldy → cldy	Aftern. cldy	
Snowfall/Depth — in/ — in.			Eve. Ptlly cldy	Night Fair → Ptlly cldy	

0645 A.M.

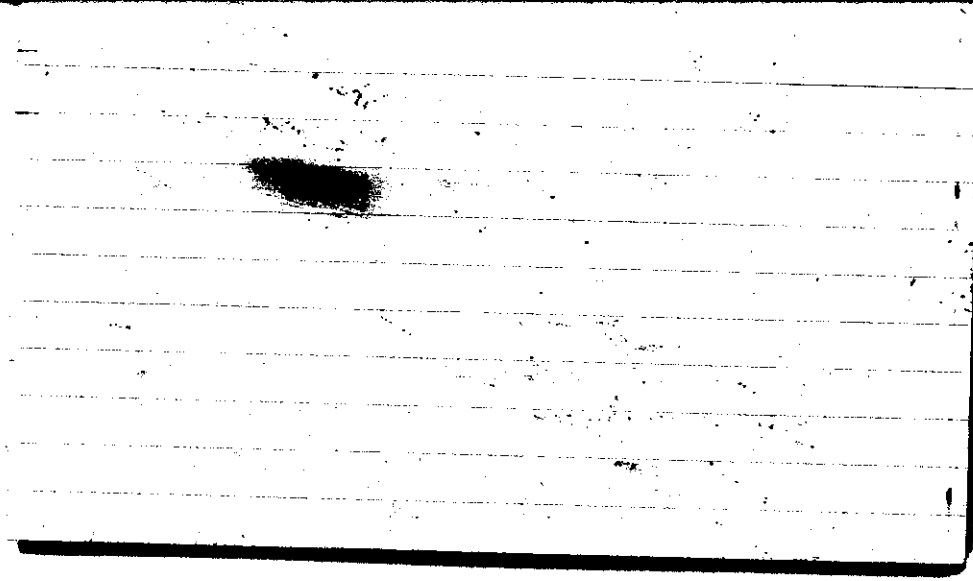


STATE COLLEGE, Pa. Date

MAR 23 1943

Time
0700

Max. 38	Wind F WNW 2	Barom. t 68	General Obs. 00 0000-7°0430
Min. 19	Vis. km. 20	p 29.19	
Dry 20	Clouds <1	p(red.) 29.09	
Wet	Ac lent.		
R.H. 63		Morn. Clear	Foren. fair
Precip. 0.1 mm / T in.		Noon fair	Aftern. clear
Snowfall/-Depth 0.1 in / 0.1 in.		Eve. clear	Night clear
A.M. 9720			



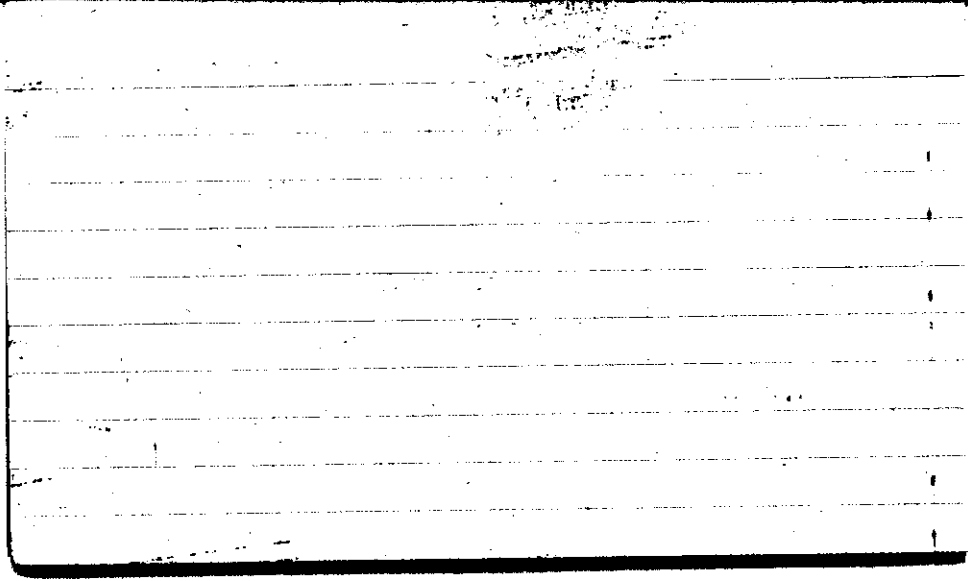
STATE COLLEGE, Pa. Date

MAR 24 1943

Time

0700

Max. 44	Wind F SW 3	Barom. t 70	General Obs. 0440-0530 ☉ 0629-0800 ☉	
Min. 20	Vis. km. 17	p 29.10		
Dry 36	Clouds 8	p (red.) 28.99		
Wet 36.8 31.4	Cs, Cc Ac lent.			
R.H. 54		Morn. pty cldy → cldy	Foren. cldy	
Precip. — mm / — in.		Noon cldy → pty cldy	Aftern. pty cldy → Fair	
Snowfall / -Depth — in / — in.		Eve. pty cldy	Night pty cldy	
AM. 0700				



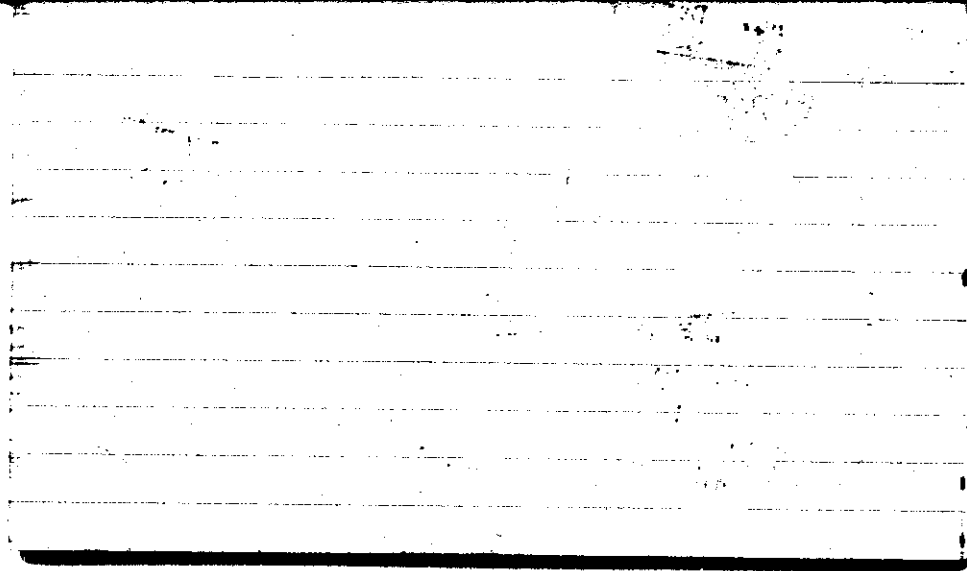
STATE COLLEGE, Pa. Date

MAR 25 1943

Time

0700

Max. 54	Wind F W 4	Barom. t 73	General Obs. ∞	
Min. 35	Vis. km. 18	p 28.91		
Dry 47	Clouds 7	p(red.) 28.79		
Wet 41	Ac			
R.H. 60		Morn. Ptlly cly.	Foren. cly	
Precip. — mm/ — in.		Noon Ptlly cly	Aftern. cly	
Snowfall/-Depth — in/ — in.		Eve. cly → Ptlly cly	Night Ptlly cly → Fair	
H.B.				



STATE COLLEGE, Pa. Date

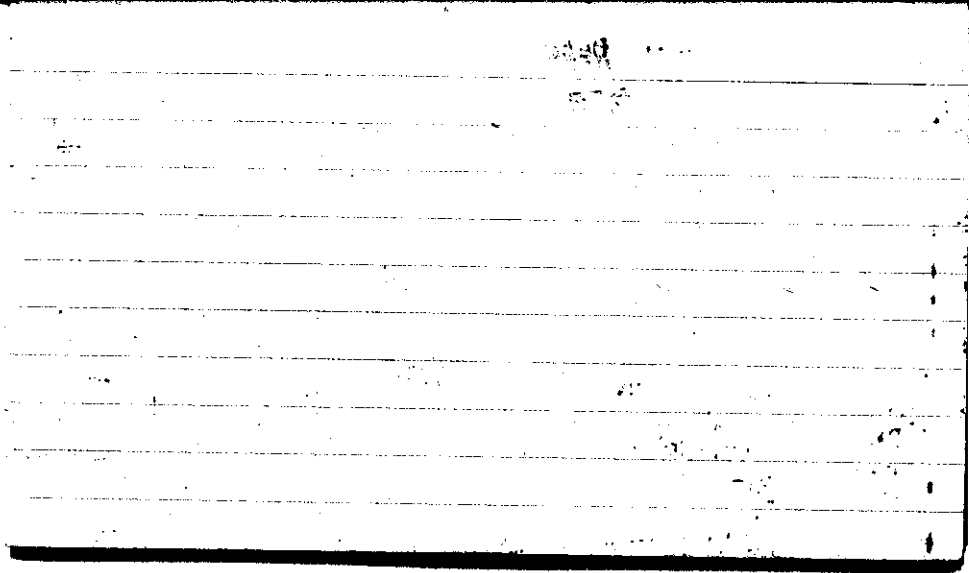
MAY 26 1943

Time

0700

Max. 60	Wind F WSW 2	Barom. t 75	General Obs. 0° ∞	0800 - 0 0900
Min. 39	Vis. km. 15 Km	p 28.90	10/1640 - 2000	1400 - 1530
Dry 41	Clouds 3	p (red.) 28.78		
Wet 39	Q. f. l. c. cipd.			
R.H. 84		Morn. Fair	Foren. pty dry	
Precip. — mm / — in.		Noon pty dry to dry	Aftern. dry to overcast	
Snowfall / -Depth — in / — in.		Eve. over rain	Night overst.	

M.R.



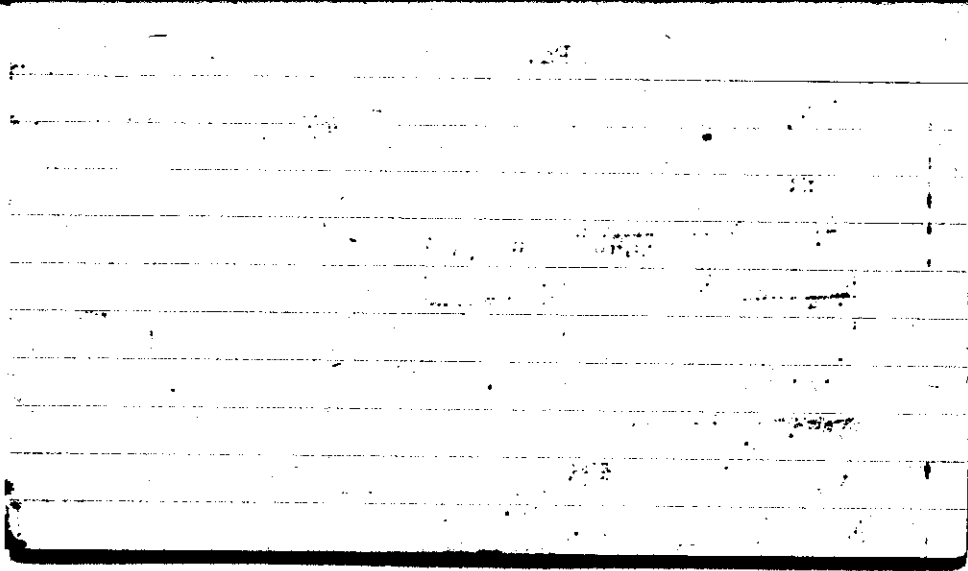
STATE COLLEGE, Pa. Date

MAR 27 1943

Time
0700

Max. 65	Wind F W 2	Barom. t 73	General Obs. ∞
Min. 39	Vis. km. 9	p 28.69	1st 0830-0930 2nd 1415-1440
Dry 50	Clouds 10	p(red.) 28.58	
Wet 47	As, Fs		
R.H. 81		Morn. Overst. rain	Foren. Overst.
Precip. .2 mm / .01 in.		Noon Overst.	Aftern. Overst.
Snowfall/-Depth — in / — in.		Eve. Overst. = 1440	Night 1415 → clear

A.B.

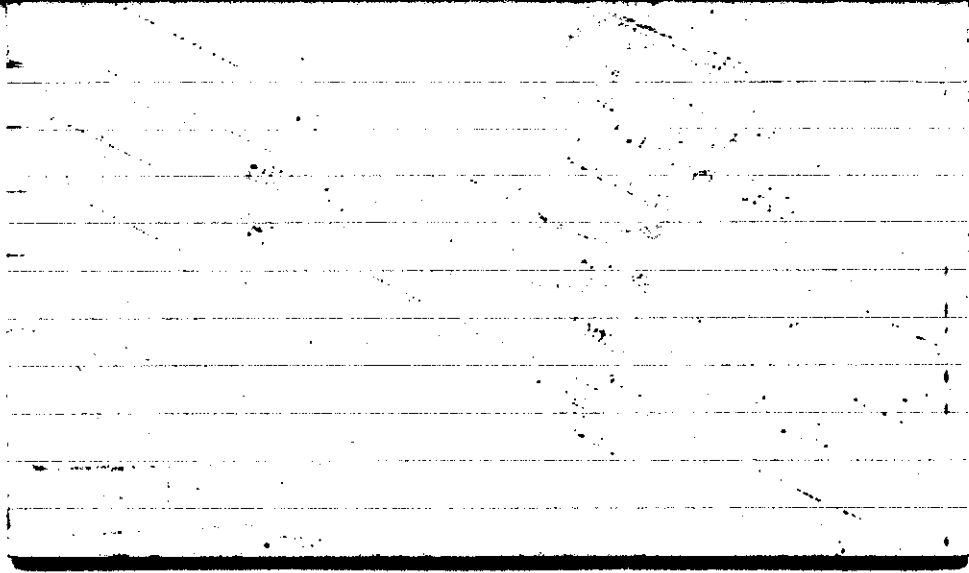


STATE COLLEGE, Pa. Date

MAR 28 1943

Time
0700

Max. 55	Wind P NW 2	Barom. t 71	General Obs. ☉ 0925-1045	
Min. 26	Vis. km. 12	p 28.89		
Dry 27	Clouds 3	p (red.) 26.78		
Wet 24	Capot, Cum Rfd, & pro k, & dense Fg, Alent.			
R.H. 65		Morn. Fair	Foren. 1/4 cly	
Precip. T mm / T in.		Noon pty. cly.	Aftern. pty. cly.	
Snowfall / -Depth in / in.		Eve. pty cly → Fair	Night Fair → Clear	
A.B.				



STATE COLLEGE, Pa. Date

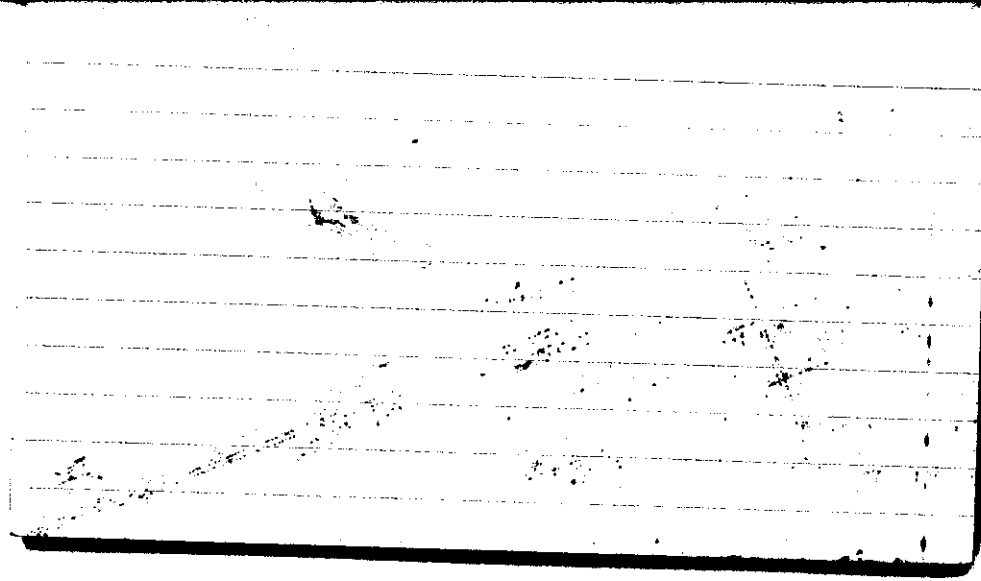
MAR 29 1943

Time

0700

Max. 42	Wind F W 1	Barom. t 70	General Obs. 0000	
Min. 20	Vis. km. 18	P 29.23	☁ - 2000 - 2330	
Dry 22	Clouds X	p(red.) 29.12		
Wet 21.5				
R.H. 80	Morn. Clear		Foren. Clear	
Precip. — mm/ — in.	Noon Clear		Aftern. Clear	
Snowfall/-Depth — in/ — in.	Eve. Clear		Night Clear	

R.B.



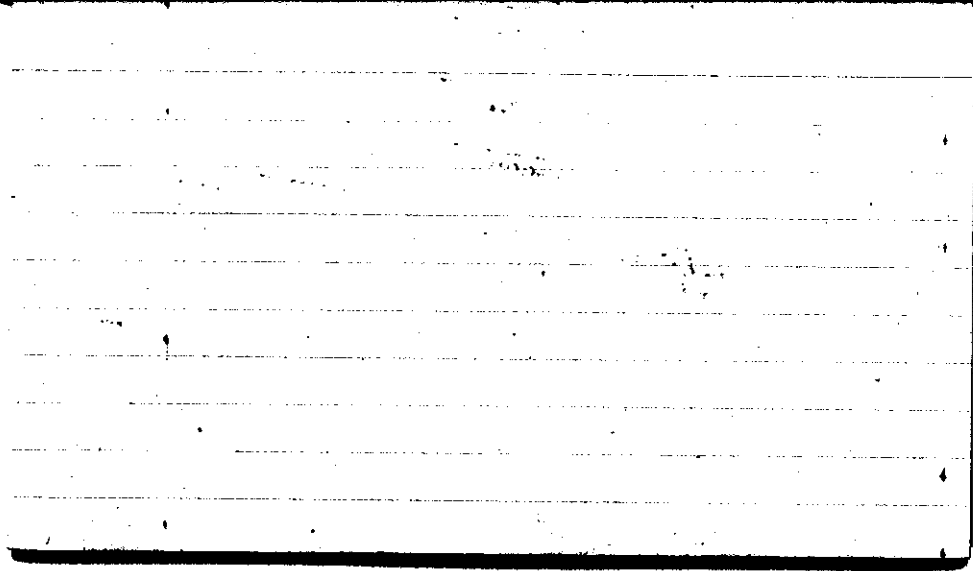
STATE COLLEGE, Pa. Date

MAR 30 1945

Time
0700

Max. 47	Wind F Calm	Barom. t 68	General Obs. 00
Min. 21	Vis. km. 10	p 29.03	° 0915
Dry W.S. 36	Clouds 8	p(red.) 28.93	None ending 10, 11, 2, 1000°
Wet 30	sc, As, Ac cc, G densat.		
R.H. 48		Morn. cldy.	Foren. overcast. Rain
Precip. — mm/ — in.		Noon overcast.	Aftern. overcast - pty cl → fair
Snowfall/-Depth — in/ — in.		Eve. Fair to pty cl	Night pty cl → fair

A.B.



STATE COLLEGE, Pa. Date

MAR 31 1943

Time
0700

Max. 71	Wind West 5	Barom. 72	General Obs. III	
Min. 35	Vis. km. 20	P 28.88		
Dry 60	Clouds 1	p(red.) 28.77		
Wet 49	Clouds, A. h. cc.			
R.H. 44		Morn. Fair → Clear	Foren. Fair	
Precip. .4 mm / .02 in.		Noon Fair	Aftern. Fair → Clear	
Snowfall / -Depth in / in.		Eve. Clear	Night Clear	
A. R.				

