

STATE COLLEGE, Pa. Date **AUG 1 1941**

Time  
**0655**

Max. <b>85.4</b>	Wind F <b>W 1</b>	Barom. t <b>83.0</b>	General Obs. <b>650 a<sup>2</sup> 00'</b>
Min. <b>66.2</b>	Vis. km. <b>8</b>	P <b>28.77</b>	
Dry <b>7.76</b>	Clouds <b>3</b>	p (red.) <b>28.63</b>	
Wet	<b>no fog</b>		
R.H. <b>96</b>		Morn. <b>partly cloudy, haze</b>	Foren. <b>partly cloudy</b>
Precip. — mm/ — in.		Noon <b>cloudy</b>	Aftern. <b>cloudy (i. place, cu comp)</b>
Snowfall, -Depth in/ in		Eve. <b>partly cloudy to fair</b>	Night <b>fair</b>



STATE COLLEGE, Pa. Date **AUG 2 1941**

Time  
0700

Max. 87.9	Wind F W 1	Barom. t 84	General Obs. 6" <u>0</u> " <u>2</u> "
Min. 63.5	Vis. km. 12	p 28.88	
Dry 69.4	Clouds 0	p(red.) 28.74	
Wet			
R.H. 93		Morn. <i>fair, ground fog</i>	Foren. <i>partly cloudy</i>
Precip. - mm/ - in		Noon <i>partly cloudy</i>	Aftern. <i>partly cloudy to fair</i>
Snowfall/ -Depth in/ in		Eve. <i>fair to clear</i>	Night <i>clear</i>

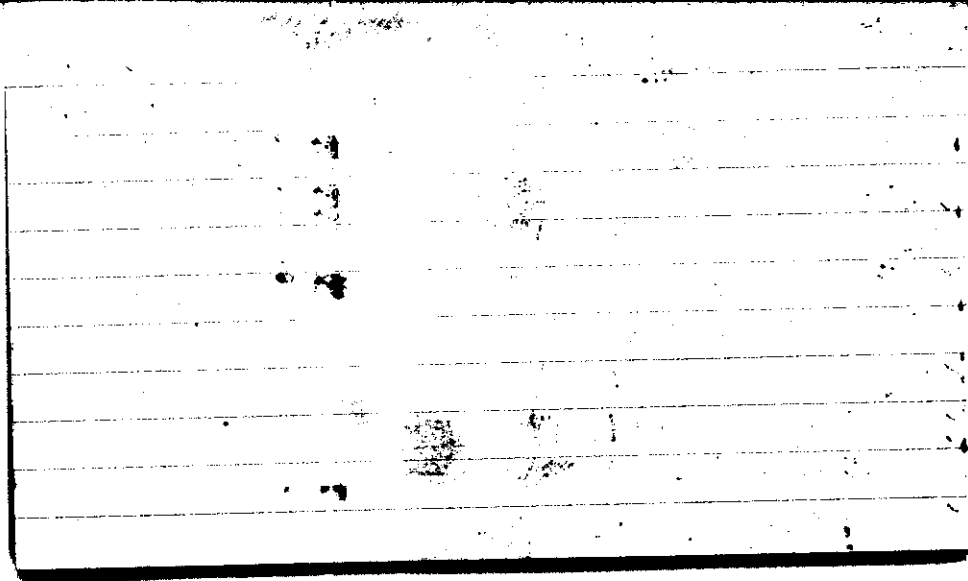
Blank lined paper with faint markings.

5  
4  
2

500000 (S) / + 13 13  
+ 13  
+ 2.6 2.6

STATE COLLEGE, Pa. Date **AUG 3 1911**Time  
0770

Max. 84.6	Wind F W 4	Barom. t 77.5	General Obs. 7" a ∞
Min. 57.4	Vis. km. 15'	p 28.98	
Dry 66.2	Clouds 2	p(red.) 28.85	
Wet	ci asc		
R.H. 81		Morn. few scattered clouds	Foren. fairly partly cloudy
Precip. — mm / — in.		Noon partly cloudy	Aftern. partly cloudy
Snowfall / -Depth in / in.		Eve. fair	Night clear



STATE COLLEGE, Pa. Date **AUG 4 1941**

Time  
0655

Max. 83.8	Wind F SW 2	Barom. t 77.0	General Obs. 65° - 2° ∞ ● 1645-1715 ● 1843-1850	
Min. 56.4	Vis. km. 15 1/4	p 28.96		
Dry 63.2	Clouds 3	p(red.) 28.83		
Wet	ac as cc			
R.H. 80	cidem uc pra	Morn. partly cloudy, haze	Foren. fair	
Precep. — mm/ — in.		Noon fair to partly cloudy	Aftern. partly cloudy to cloudy (light rain)	
Snowfall/Depth in/ in.		Eve. cloudy	Night partly cloudy	

↑  
2  
3  
↓  
+ 8  
+ 8  
8  
+ 2.7 2.7



STATE COLLEGE, Pa. Date

AUG 5 1941

Time  
0705

Max. 87.8	Wind F calm	Barom. t 82.0	General Obs. 7 <sup>00</sup> a' ∞ <sup>2</sup> 12 <sup>44</sup> - 12 <sup>46</sup> ● drops
Min. 62.0	Vis. km. 3 3	p 28.84	
Dry 69.2	Clouds 3	p (red.) 28.70	
Wet	cc ci ci den		
R.H. 86		Morn. fair (w/ flacc, cc, cs, mb)	Foren. fair to partly cloudy
Precip. 0.15 mm / 0.01 in		Noon partly cloudy to cloudy	Aftern. cloudy
Snowfall / -Depth in / in		Eve. partly cloudy (w/ flacc)	Night fair

Handwritten notes on lined paper, including the text "Gilm (2) - 5 - 5" and "5.8 5.2 - 2.5 2.5".

Gilm (2) - 5 - 5  
5.8 5.2 - 2.5 2.5

STATE COLLEGE, Pa. Date **AUG 6 1941**

Time  
0700

Max. 86.0	Wind F calm	Barom. t 81.0	General Obs. 7° - ∞
Min. 57.6	Vis. km. 10	p 28.91	
Dry 66.4	Clouds 0	p(red.) 28.77	
Wet			
R.H. 76		Morn. clear	Foren. partly cloudy
Precep. trace rain in		Noon partly cloudy (cl)	Aftern. partly cloudy to fair (ci fls)
Snowfall/ -Depth in/ in		Eve. fair	Night fair

		8-
		4-
		6-
		1-
		7-
	6-	9
	4-	2
	6-	3
	3-	1
	2	1
	2	1
	3-	6
	4-	9
	0	1
	1-	1
	0	2
	4-	4-
	6-	4-
	9	2+
	2	8-
	0	

6-07-83 (25)-83 + 44 127 - 1.1 3.6

STATE COLLEGE, Pa. Date **AUG 6 1941**

Time  
**1900**

Max.	Wind F <b>N 2</b>	Barom. t	General Obs.
Min.	Vis. km. <b>20</b>	p	
Dry <b>73.2</b>	Clouds <b>2</b>	b (red.)	
Wet	<b>cc</b>		
	<b>ci flocc</b>		
R.H. <b>46</b>		Morn.	Foren.
Precip. mm/ in.		Noon	Aftern.
Snowfall/Depth in/ in.		Eve.	Night

+25  
Tucson (9) -3 + 28 31 +2.8 3.4  
7  
3  
7  
-3  
4  
1  
0  
2  
4

STATE COLLEGE, Pa. Date **AUG 7 1941**

Time  
0700

Max. 82.2	Wind F calm	Barom. t 29.0	General Obs. 7" a <sup>2</sup> 00'
Min. 50.8	Vis. km. 12	p 29.08	
Dry 59.7	Clouds 0	p(red.) 28.95	
Wet			
R.H. 81		Morn. clear haze	Foren. clear
Precip. — mm/ — in.		Noon clear to fair (ci)	Aftern. fair (ci)
Snowfall/-Depth in/ in		Eve. fair to clear	Night clear

110210-9  
110210-4  
110210-2  
110210-1  
110210-5  
110210-7

Amount (13) - 33 + 2 35 - 2.4 2.7  
- 31



STATE COLLEGE, Pa. Date

AUG 8 1941

Time  
0700

Max. 85.2	Wind F <i>calm</i>	Barom. t 72°	General Obs. 7 <sup>h</sup> e <sup>2</sup> ∞	
Min. 53.6	Vis. km. 15 <sup>9</sup>	p 28.98		
Dry 61.0	Clouds 0	p(red.) 28.85		
Wet				
R.H. 86		Morn. <i>clear, haze</i>	Foren. <i>clear haze</i>	
Precip. — mm/ — in.		Noon " "	Aftern. " "	
Snowfall/Depth in/ in.		Eve. <i>fair (ci fum)</i>	Night <i>fair</i>	

	9-	4-
	6-	3-
	4-	3-
	2-	5-
	2-	8-
	2-	1-
	5-	2-
	4-	2-
	5-	4-
	1-	7-
	4-	1-
	2-	8-
	1-	4-
	2-	3-
	5-	3-
	7-	7-
	3-	2-
	3-	3-
	4-	4-
	6-	4-
(50)		Tolerance
- 32 + 32		
- 2.9		
4.1		

STATE COLLEGE, Pa. Date **AUG 9 1941**

Time  
0205

Max. 90.8	Wind F WSW 1	Barom. t 77.0	General Obs. 7 <sup>m</sup> 2 <sup>2</sup> 0 <sup>2</sup> 12 <sup>10</sup> -12 <sup>3</sup> ● drpgs
Min. 59.6	Vis. km. 3	p 28.85	
Dry 67.0	Clouds > 1	p (red.) 28.72	
Wet	ci den ci		
R.H. 88		Morn. fair haze	Foren. pty cloudy to cloudy
Precip. — mm / — in		Noon cloudy rain drpgs	Aftern. cloudy to pty cloudy
Snowfall / -Depth — in / — in		Eve. partly cloudy to fair	Night fair

-4  
-1  
2  
-5  
6

Fordham (S) 19 + 2 21 -3.4 4.2  
-17

STATE COLLEGE, Pa. Date **AUG 10 1941**

Time  
**0707**

Max. <b>87.4</b>	Wind F <b>NW 3</b>	Barom. t <b>81.5</b>	General Obs. <b>7° - 2° 2<sup>30</sup> ☉ - 3<sup>30</sup> // as flow cu ci fil</b>
Min. <b>63.2</b>	Vis. km <b>18</b>	p <b>28.96</b>	
Dry <b>67.4</b>	Clouds <b>21</b>	p (red.) <b>28.82</b>	
Wet	<b>cu</b>		
R.H. <b>82</b>		Morn <i>fair for method cumulus</i>	Foren. <i>partly cloudy</i>
Precip. <i>Trace</i> mm/ in.		Noon <i>partly cloudy</i>	Aftern. <i>partly cloudy</i>
Snowfall/Depth in/ in		Eve. <i>fair</i>	Night <i>fair</i>

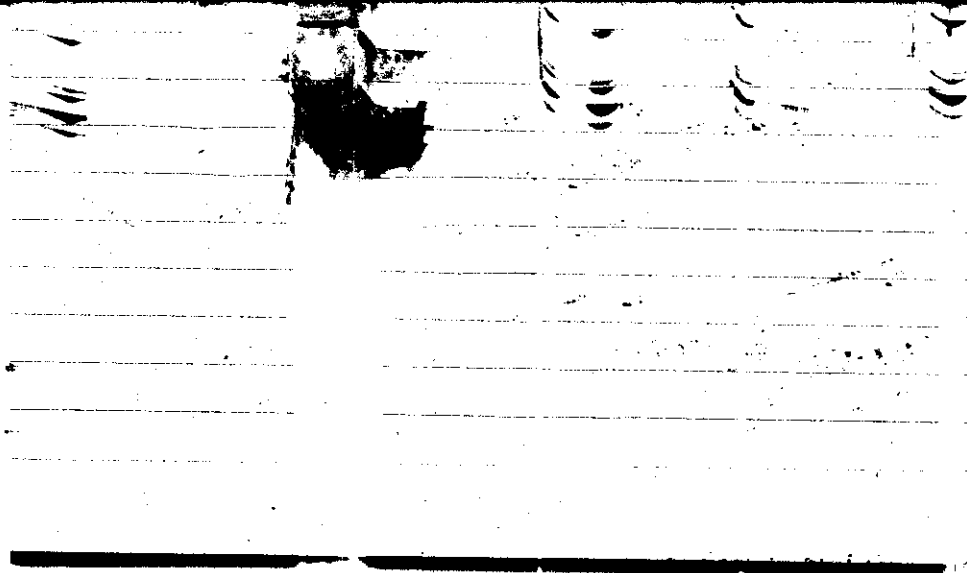
	1
	-2
	6
	2
	$\frac{5}{2}$
	-9
	3
	1
	-1
	7
	-3
	2
	0
	4
	-4
	-1
	0
	-2
	-9
	-3
	-6
	0
	5
	-3
	+3
	+1

Eskdalemuir (35) -52 +43 95 -0.3 2.7

STATE COLLEGE, Pa. Date AUG 11 1941

Time  
0700

Max.	Wind F	Barom.	General Obs.
81.2	SE 2	t 79.0	12 <sup>15</sup> ☺ - 13:05
Min.	Vis. km	p	
51.2	25 1/2	28.97	1510-1515 • dr.
Dry	Clouds	p(red.)	
59.2	3	28.84	20 <sup>h</sup> ☺ } N-W
Wet	ac		21 <sup>h</sup> ☺ } N-W
	acc		21 <sup>30</sup> ☺ - 24 <sup>h</sup>
R.H.	cc	Morn.	Foren.
73	cc	partly cloudy (cc flacc, cc ci fil.)	partly cloudy
Precip.		Noon	Aftern.
mm/ in.		cloudy	rain drops overcast with breaks
Snowfall/-Depth		Eve.	Night
in/ in.		cloudy to overcast	overcast thunderstorm

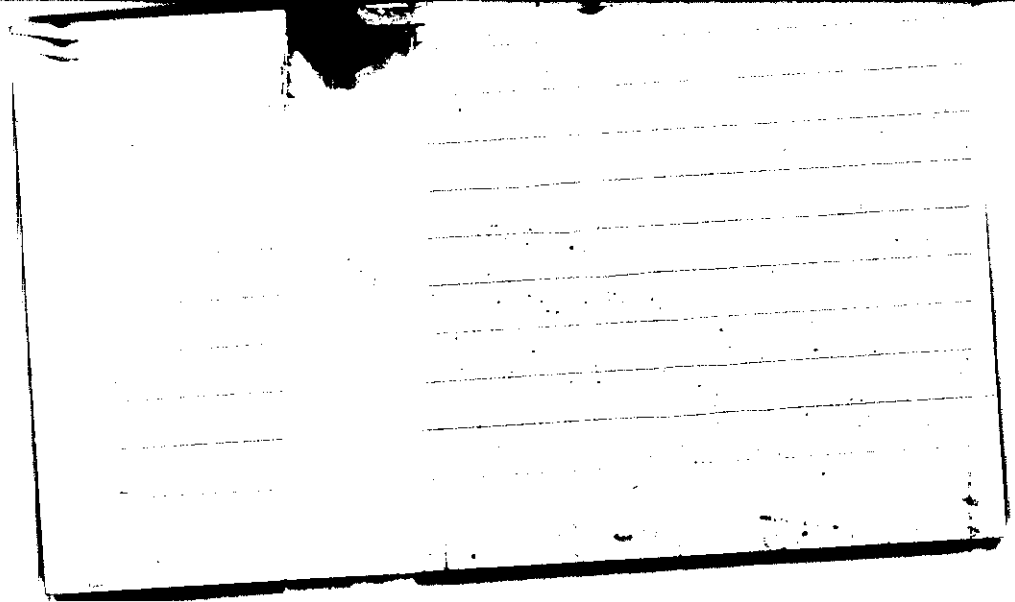




STATE COLLEGE, Pa. Date **AUG 12 1941**

Time  
0700

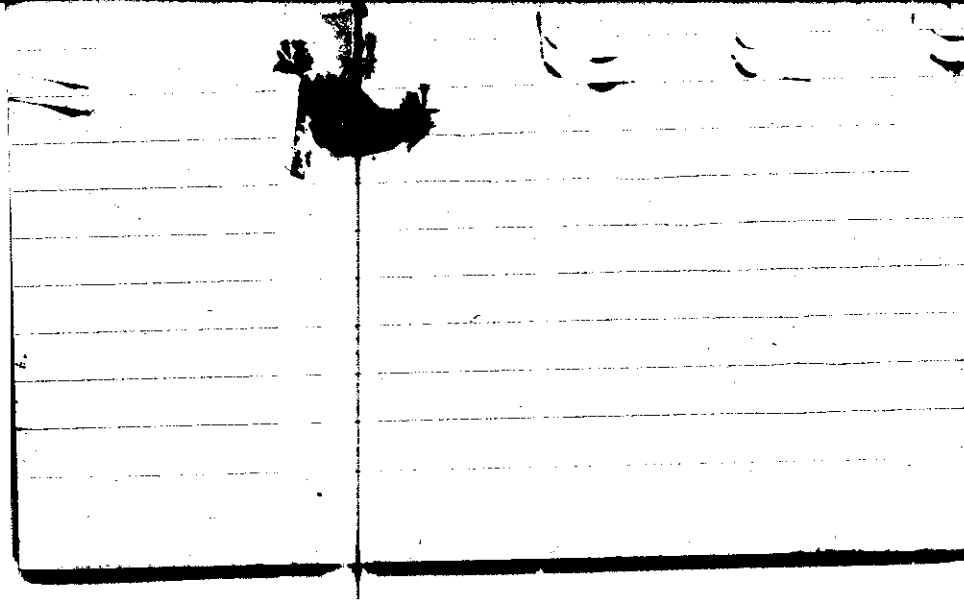
Max. 79.8	Wind P W 4	Barom. t 79.0	General Obs. 0:00 ☉ - 2:40 10 <sup>30</sup> ☉ - 11:45
Min. 56.2	Vis. km. 14	28.60	
Dry 69.2	Clouds 8	p(red.) 28.47	
Wet	cu sc ci ps cl		
R.H. 96		Morn. cloudy	Foren. cloudy
Precip. 8.7 mm / 0.34 in.		Noon "	Aftern. "
Snowfall/-Depth in/ in.		Eve. partly cloudy	Night partly cloudy clear



STATE COLLEGE, Pa. Date **AUG 13 1941**

Time  
0700

Max. 78.2	Wind F NW 3	Barom. t 76.0	General Obs. 7" haze drift to SW 7" $\alpha^2$
Min. 47.2	Vis. km. 20	p 28.96	
Dry 52.8	Clouds 0	p (red.) 28.89	
Wet <del>52.8</del>			
R.H. 71		Morn. clear	Foren. partly cloudy (cel)
Precip. mm/ in.		Noon partly cloudy (cel)	Aftern. partly cloudy (w ci pd)
Snowfall/ -Depth in/ in.		Eve. partly cloudy to fair	Night fair



STATE COLLEGE, Pa. Date **AUG 17 1947**

Time  
0700

Max.	Wind F	Barom.	General Obs.
70.0	SE 2	t 74	7 <sup>h</sup> 2 <sup>o</sup> 7 <sup>15</sup> 10 <sup>o</sup> comel 8 <sup>h</sup>
Min. 46.8	Vis. km. 20 <sup>00</sup>	29.04	
Dry 52.2	Clouds b di lens	28.92	
Wet	ci pit		
R.H. 78	as cc, ci, psc cc comb	Morn.	Foren.
Precip.		partly cloudy (5 ci)	partly cloudy to fair
		Noon 1/2 pit, ci, psc, w	Aftern.
Snowfall, -Depth		partly fair and	partly cloudy
in/ in		Eve. partly cloudy	Night " " to cloudy

Riverier(7)

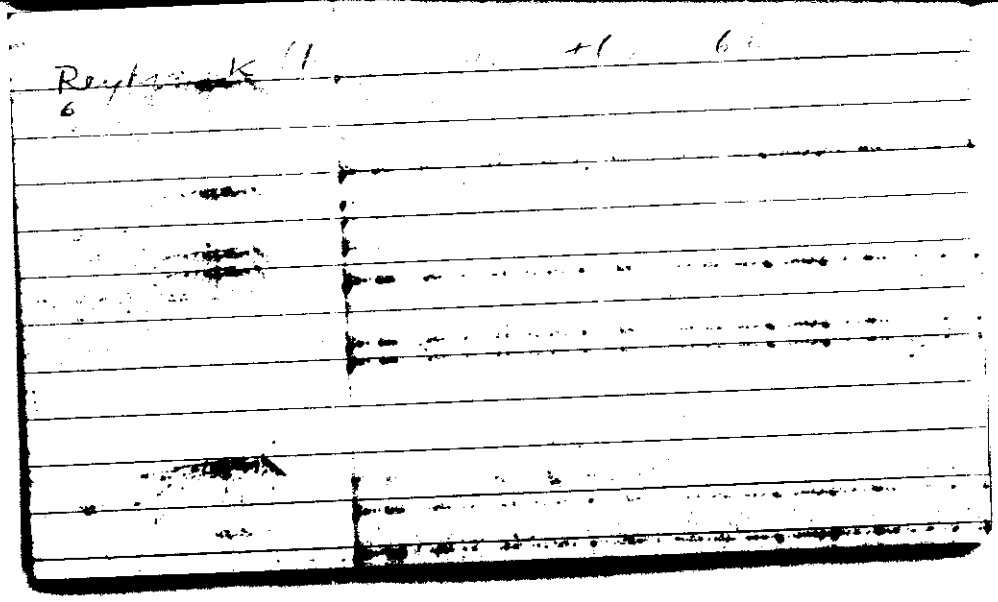
-9  
-17 + 8 25 -1.3 3.6

-4  
-9  
1  
-2  
1  
6  
-2

STATE COLLEGE, Pa. Date **AUG 15 1941**

Time  
7:00

Max. 78.4	Wind F W 2	Barom. t 74.5	General Obs. 5 <sup>20</sup> 8 <sup>15</sup> // 9 <sup>05</sup> T
Min. 51.2	Vis. km 6	P 28.90	9 <sup>05</sup> 9 <sup>44</sup> // T <sub>R</sub> 938 <sup>in W</sup>
Dry 60.4	Clouds 10	p (red.) 28.78	9 <sup>44</sup> 13:00 1430 16:30
Wet	no se		22:00-23:40 1640 T <sub>R</sub> -1960
R.H. 97		Morn. overcast rain	Foren. thunderstorm
Precip. 2.9 mm/0.11 in.		Noon " "	overcast rain showers
Snowfall, -Depth in/ in		Eve. rain overcast with breaks	Aftern. rain overcast with breaks
		Night overcast with breaks	Night cloudy





STATE COLLEGE, Pa. Date

AUG 16 1941

Time

7:00

Max. 71.2	Wind F NW 3	Barom. t 76.0	General Obs. 15 <sup>00</sup> ● - 15 <sup>10</sup>	
Min. 58.8	Vis. km. 11	28.76		
Dry 67.0	Clouds 10 br.	28.64		
Wet	Sc			
R.H. 86		Morn. overcast with brds	Foren. cloudy	
Precip. 44.4 mm/1.76 in.		Noon cloudy	Aftern. " rain	
Snowfall/Depth in/ in		Eve. ptly cloudy to fair	Night fair to clear	

Prague 1/0 +1 | +1.0 1.0

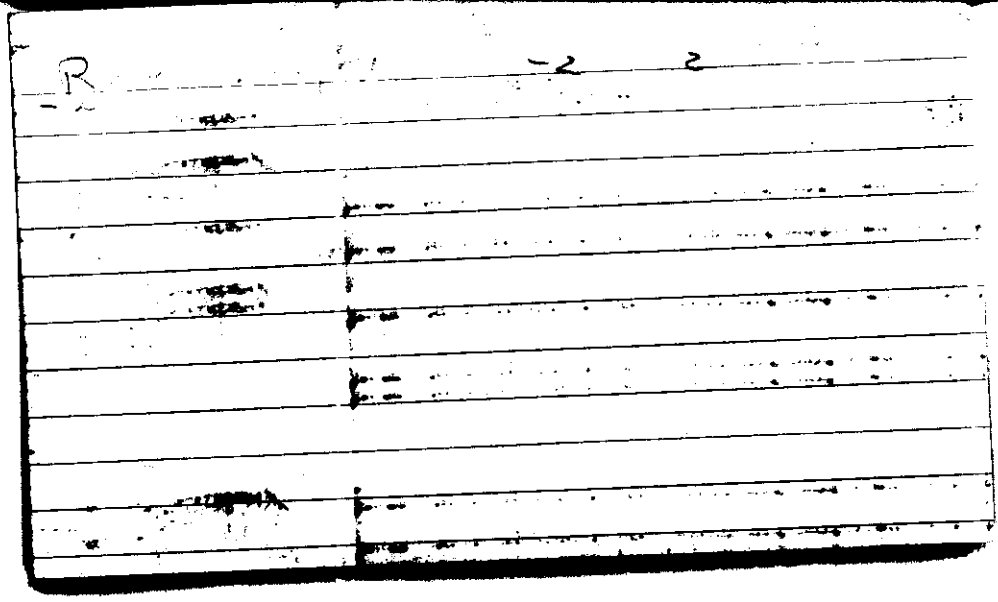
STATE COLLEGE, Pa. Date

AUG 17 1941

Time

7:08

Max. 76.3	Wind F WSW 2	Barom. t 74	General Obs. 7" $\alpha$
Min. 50.7	Vis. km. 20	28.92	
Dry 56.3	Clouds p. cu.	o (red.) 28.82	
Wet 0			
R.H. 87		MORN. fair	Foren. partly cloudy
Precip. T mm/ T in.		Moon partly cloudy (cu)	Aftern. cloudy to partly cloudy (cu, ci, str)
Snowfall, - Depth - in/ - in.		Eve. partly cloudy	Night partly cloudy



STATE COLLEGE, Pa. Date **AUG 18 1941**

Time  
700

Max. 73.2	Wind F SE 2	Barom. t 71.0	General Obs. 7" $\alpha^2 \equiv$ to SE + SW
Min. 47.8	Vis. km. 15.9	P 28.94	16" - 16" $\bullet$ dr.
Dry 53.6	Clouds 2	o (red.) 28.87	21" $\circ$ - 22"
Wet	ac		22" $\circ$ - 23 25" $\bullet$
R.H. 90		Morn. <i>partly cloudy</i>	Foren. <i>partly cloudy</i>
Precip. - mm/ - in.		Noon <i>fair ci des ci floe</i>	Aftern. <i>rainy</i> <i>partly cloudy to cloudy</i>
Snowfall, -Depth in/ in.		Eve. <i>cloudy to overcast rain</i>	Night <i>overcast showers</i>

- 0 7

Pulkovo (55) - 119 + 22 141 - 1.8 2.6

2	-3	1
-1	-4	-6
4	0	-8
-6	-1	-3
0	-3	-5
2	0	1
-1	0	2
-1	1	-3
1	-3	-2
-8	-4	5
-2	-1	-2
-2	0	-3
-2	-1	-3
-2	-1	-3
-2	-3	-5
-1	-4	
0	-4	
2	-1	
-3	-2	
-3	-4	

STATE COLLEGE, Pa. Date **AUG 19 1941**

Time  
0700

Max. 77.0	Wind F W 3	Barom. t 25.0	General Obs. 7 <sup>h</sup> 101	
Min. 51.6	Vis. km. 159	P 28.73	3 <sup>h</sup> 0° - 5 <sup>h</sup>	
Dry 66.0	Clouds 10	p (red.) 28.61	5 <sup>h</sup> 0° - 6 <sup>h</sup>	
Wet	ac ns		6 <sup>h</sup> 0° - 7 <sup>10</sup> 7450 - 1445	
R.H. 97		Morn. overcast, interm. light rain	Foren. overcast, rain	
Precip. 3.5 mm / 0.14 in		Noon overcast, rain	Aftern. overcast, rain	
Snowfall / - Depth - in / - in		Eve. overcast to cloudy	Night partly cloudy to fair	

-6

Rocca di Papa (9) - 12 + 6 18 - 0.7 2.0

-1  
-2  
-4  
-2  
2  
0  
3  
-3



STATE COLLEGE, Pa. Date

AUG 20 1941

Time  
0700

Max. 68.6	Wind F calm	Barom. t 69.5	General Obs. 7° $\Delta^2$
Min. 53.0	Vis. km. 18 $\frac{1}{2}$	p 28.91	
Dry 59.8	Clouds cu	p (red.) 28.80	
Wet			
R.H. 84		Morn. fair	Foren. partly cloudy
Precip. 10.2 mm / 0.4 in.		Noon partly cloudy	Aftern. " " cu
Snowfall / -Depth in / in.		Eve. fair	Night fair



STATE COLLEGE, Pa. Date **AUG 21 1941**

Time  
0700

Max. 75.1	Wind F S 2	Barom. t 68.0	General Obs. 7" $\bar{a}$ $\bar{z}$ $\bar{z}$
Min. 48.8	Vis. ma. 14"	P 28.96	
Dry 55.8	Clouds 0	p (red.) 28.86	
Wet			
R.H. 95		Morn. clear valley fog	Foren. partly cloudy
Precip. mm/ in.		Noon fair (ci pil ci / fine)	Aftern. fair
Snowfall, -Depth in/ in.		Eve. "	Night partly cloudy

+3

Samorkand (Si) - 33 + 36 69 +0.1 2.2

0	1		
-8	0		
3	1		
1	1		
-1	1		
-8	8		
-5	-2		
0	4		
-2	6		
0	0		
4	0		
0			
-1			
3			
2			
-2			
-1			
0			
-3			

STATE COLLEGE, Pa. Date

AUG 22 1941

Time

0700

Max. 80.4	Wind F calm	Barom. t 72.5	General Obs. 7 <sup>00</sup> 2° 7 <sup>10</sup> - 7 <sup>20</sup> 0°
Min. 59.4	Vis. km. 20 94	P 28.91	940 0° - 10 <sup>05</sup> 10 <sup>45</sup> 0° - 11 <sup>30</sup>
Dry 63.8	Clouds 7	p (red.) 28.80	10 <sup>45</sup> - 11 <sup>10</sup> R 14 <sup>30</sup> 0° - 15 <sup>4</sup>
Wet	sc bc ci. low ci. med as		
R.H. 94		Morn. cloudy rain	Foren. overcast rain
Precip. mm/ in.		Noon rain to cloudy overcast thunder	Aftern. cloudy
Snowfall, -Depth in/ in.		Eve. partly cloudy	Night cloudy

San Fernando (1) <sup>26</sup>-0+6 6 +6.0 6.0

STATE COLLEGE, Pa. Date

AUG 23 1941

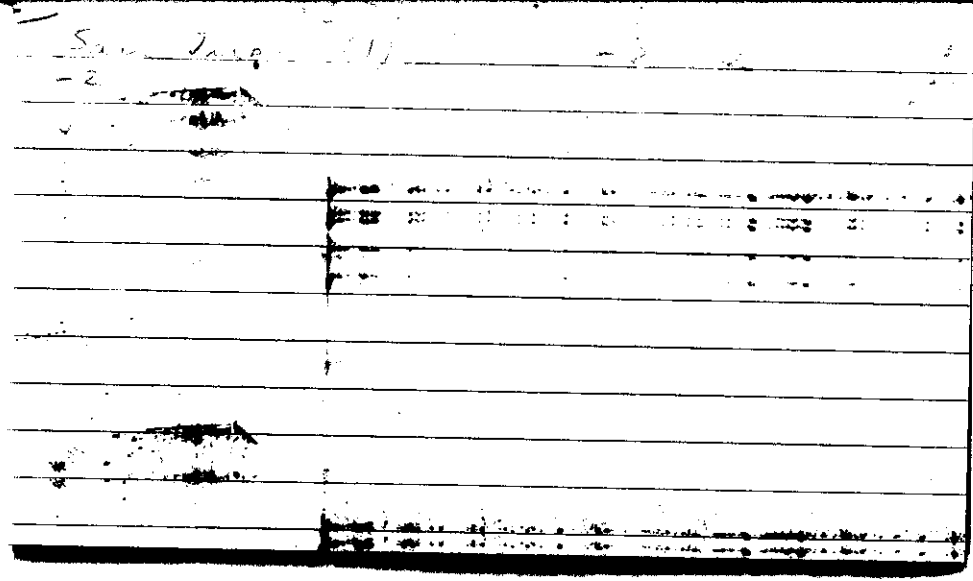
Time

0200

Max. 79.2	Wind F W 2	Barom. t 75	General Obs. 6" ☉ / ≡ 2' 6"
Min. 59.8	Vis. km. <del>8.5</del>	P 28.87	-8"
Dry 64.0	Clouds > 9 aden	o/(red.) 28.75	
Wet	cc cc/floc		
R.H. 95	as in fil	Morn. high broken clouds	Foren. partly cloudy
Precip. 0.15 mm/0.01 in.		Noon partly cloudy	Altern. "
Snowfall/-Depth in/ in.		Eve. fair	Night fair

Sun. Jan. (1)

-2





STATE COLLEGE, Pa. Date

AUG 24 1941

Time

0711

Max.	Wind F	Barom.	General Obs.
79.8	SSE 2	t 75.0	7" <u>2</u>
Min.	Vis. km.	p	
53.6	20 <sup>99</sup>	28.98	
Dry	Clouds	o (red.)	
59.8	2	28.86	
Wet			
	ci den cc ci fil		
R.H.		Morn.	Foren.
89		fair ( $\frac{2}{10}$ ci)	fair to partly cloudy
Precip.		Noon	Aftern.
mm/ in.		partly cloudy	partly cloudy to cloudy
Snowfall, -Depth		Eve.	Night
in/ in.		partly cloudy to cloudy	cloudy to overcast

17<sup>1</sup> -3 + 61 64 +3.4 3.8

4  
1  
4  
6  
4  
1  
2  
1  
3  
2

STATE COLLEGE, Pa. Date **AUG 25 1941**

Time  
0708

Max. 84.4	Wind F VSW 3	Barom. t 78.0	General Obs. 7 <sup>00</sup> = 5.39.1-10 <sup>15</sup> 1:10-200TR
Min. 58.0	Vis. km. 5 3	p 28.75	12 <sup>50</sup> 0'-13 <sup>15</sup> 13 <sup>15</sup> 0'-14 <sup>25</sup>
Dry 70.5	Clouds 10	σ (red.) 28.62	2330-2400 0'-2/TR <sup>2</sup> 2230-0030
Wet	st 45		1740 10: 1750 10: -18h
R.H. 96		Morn. overcast lgt rain	Foren. overcast rain
Precip. 0.45 mm/0.02 in		Noon cloudy to overcast show	Aftern. overcast to cloudy
Snowfall, -Depth in/ in		Eve. partly cloudy (st, in) w/prec	Night overcast thunderstorms

-6  
-17 + 11 28 -0.7 3.1  
4  
-3  
-4  
-6  
-1  
-2  
-2

STATE COLLEGE, Pa. Date

AUG 28 1941

Time

0705

Max. 80.4	Wind F SW 4	Barom. t 79.0	General Obs. 0:00 $\odot^2 - 0.95$ ; 1:15 $\odot^2 - 200$
Min. 65.8	Vis. km. 15.9	P 28.70	$\odot^2 - 1$ 3:30-5:00 TR <sup>2</sup> 1:15-2:30;
Dry 72.2	Clouds 1	p (red.) 28.57	TR <sup>2</sup> 3:30-5:00 11 <sup>h</sup> -11:15 $\odot$
Wet	cu ac ci		1545 $\odot^2 - 1745$ 1545 TR - 17 <sup>h</sup>
R.H. 98		Morn. fair to partly cloudy	Foren. cloudy
Precip. mm/ in.		Noon cloudy	Aftern. <i>thunderstorm</i> cloudy to sunset
Snowfall/-Depth in/ in.		Eve. cloudy to partly cloudy	Night partly cloudy

	St Louis (21)	-46 + 16	62	-1.4 3.0
		-5		
1				
-9				
-5				
-3				
-3				
-4				
3				
-1				
3				
-3				
0				
4				
-2				
2				
-2				
-6				
-1				
-6				
-3				
1				

STATE COLLEGE, Pa. Date **AUG 27 1941**

Time  
0703

Max. 85.2	Wind F N 5	Barom. t 74.0	General Obs. 1530-1645 (10)
Min. 57.4	Vis. km. 25	p 28.95	
Dry 59.4	Clouds 3	(red.) 28.83	
Wet	cu a pil		
R.H. 72		Morn. pty cldy	Foren. pty cldy to cloudy
Precip. 8.8 mm / 0.35 in.		Noon cloudy	Aftern. cloudy to pty cloudy
Snowfall/-Depth in/ in.		Eve. fair some light drizzle	Night

+ 21

= Scotchby Sumo (2.4) -19 + 46 65 +1.1 2.7

2	-3		
2	0		
-1	-3		
1	0		
5			
3			
-3			
0			
6			
9			
0			
3			
2			
3			
1			
5			
-1			
-4			
3			
-5			



STATE COLLEGE, Pa. Date

AUG 28 1941

Time

7:00

Max. 72.5	Wind F calm	Barom. t 74.0	General Obs. 7 <sup>00</sup> a	
Min. 44.0	Vis. km. 18 <sup>92</sup>	p 29.18		
Dry 53.0	Clouds 0	p (red.) 29.06		
Wet	/			
R.H. 84		Morn. clear, haze in distance	Foren. clear few small fcs	
Precip. mm/ in.		Noon "	Aftern. "	
Snowfall, -Depth in/ in.		Eve. fais (à peu à peu)	Night	

50s hat am

+6.0

6.0

6

Max. 74.0	Wind F E 2	Barom. t 73.5	General Obs. 7" $\alpha^2$	
Min. 46.6	Vis. km. 18 "	P 29.24		
Dry 50.2	Clouds 7	b (red.) 29.12		
Wet	cc ac ci ci a flacc			
R.H. 97		Morn. cloudy	Foren. fair	
Precip. mm/ in.		Noon pty cloudy	Aftern. pty cloudy to fair	
Snowfall/ -Depth in/ in.		Eve. fair ci pra	Night partly cloudy	

-4  
- Sed. Aug. 18 -11 + 7. 18 -0.5 2.2  
0  
-6  
-1  
0  
-2  
3  
-2  
4

STATE COLLEGE, Pa. Date **AUG 30 1941**

Time

0709

Max. 79.7	Wind F WSW 2	Barom. t 77	General Obs. 6 <sup>h</sup> 2 <sup>o</sup> 00 <sup>o</sup> = <sup>o</sup>
Min. 49.6	Vis. km. 10	29.11	
Dry 64.0	Clouds 3	28.98	
Wet	ac		
R.H. 78		Morn. <i>ptly cloudy light breeze</i>	Foren. <i>partly cloudy to cloudy</i>
Precip. mm/ in		Noon <i>cloudy to ptly cloudy</i>	Aftern. <i>ptly cloudy</i>
Snowfall/Depth in/ in		Eve. <i>fair</i>	Night <i>" "</i>

S		-39	+22	61	-0.7	2.3
-2	-2					
-3	3					
-5						
1	2					
5	-1					
-2	-1					
-4						
0						
-6						
-4						
-1						
2						
-2						
-2						
10						
4						
-2						
3						
1						

STATE COLLEGE, Pa. Date **AUG 31 1941**

Time  
07 00

Max. 86.5	Wind F SW 3	Barom. t 80	General Obs. 6 <sup>h</sup> 00 2°
Min. 64.0	Vis. km. 12	p 28.97	
Dry 73.9	Clouds 3	b (red.) 21.84	
Wet	ac ci floe		
R.H. 94		Morn. <i>ptly cloudy</i>	Foren. <i>partly cloudy</i>
Precip. mm/ in.		Noon " "	Aftern. " "
Snowfall/-Depth in/ in.		Evs. <i>ci floe up fair cond</i>	Night ac as " " <i>today</i>

- 3  
- 3 / 3 - 1.5 1.5  
- 1  
- 2