

STATE COLLEGE, Pa. Date

FEB 1 1941

7:00

Max. 33.2	Wind F NNW 3	Barom. t 70	General Obs. 7:00 ☒ 9.0" 920 *H -10'
Min. 20.5	Vis. km. 35	P 28.95	
Dry 23.6	Clouds 10 Sc	p(red.) 28.84	
Wet			
R.H. 74		Morn. overcast	Foren. overcast, few snowflakes
Precip. 0.1 mm/ Tr. in.		Noon overcast with break	Aftern. cloudy to pty cloudy
Snowfall/ in/	-Depth in.	Eve. pty cloudy fair	Night pty cloudy to overcast

Lemberg (15) -39 +36 75 -0.2 5.0  
+9  
+6  
+2  
-7  
+9  
+4  
-7  
-1  
-2  
-2  
-5  
-2  
+6  
-4  
-9

STATE COLLEGE, Pa. Date

FEB 1 1941

Time

1900

Max. 35.7	Wind F SW 3	Barom. t	General Obs.
Min.	Vis. km. 10 ∞	p	
Dry 31.1	Clouds 2	p (red.)	
Wet	ci des cc		
R.H. 65		Morn.	Foren.
Precip. mm/ in.		Noon	Aftern.
Snowfall/-Depth in/ in.		Eve.	Night



STATE COLLEGE, Pa. Date FEB 2 1941

Time 0703

Max. 39.0	Wind F WNW 4	Barom. t 70.5	General Obs. 0650 <del>7</del> 7.3"
Min. 23.4	Vis. km. 7	p 28.56	* 0620-0655 * 0655-0815
Dry 36.3	Clouds 10	p (red.) 28.45	* 1115-1300 * 1405-1530
Wet	NS		* 1830-2130
R.H. 75		Morn. <i>lgt. drizzle, rain</i> <i>overcast</i>	Foren. <i>overcast</i>
Precip. T mm/0.00 in.		Noon "	Aftern. <i>snow showers</i>
Snowfall/-Depth in/ in.		Eve. <i>cloudy, snow showers</i>	Night " <i>breaks in late afternoon</i>

~~Gipatti~~ South Europ Russia

Tiflis 36 -36 +99 +63 135 +1.8 3.8

Baku 109 -60 +213 +253 373 +2.3 3.4

Makhayaka 43 -53 +66 +19 119 +0.3 2.8

Simpopol 20 -21 +49 +28 70 +1.4 3.5

Theodora 19 -10 +77 +67 87 +3.5 4.6

(227) -180 +604 +424 784 +1.9 3.5

STATE COLLEGE, Pa. Date FEB 3 1961

Time  
0702

Max. 36.3	Wind F NNW 4	Barom. t 79.5	General Obs. 0700 ☒ 6.4"
Min. 23.6	Vis. km. 12	p 28.77	* flake 0735-0950
Dry 24.0	Clouds 10	p(red.) 28.64	* H 1020-1140
Wet	asc		1245-1355 *H 15h-17h/*H
R.H. 68		Morn. overcast to cloudy	Foren. cloudy to overcast w/brks
Precip. 0.3 mm/0.01 in.		Noon " to overcast w/brks	Aftern. cloudy
Snowfall/-Depth in/ in.		Eve. cloudy	Night "

~~Capita Town~~ S. Asia Russ.

Almata	7	-8	+18	+10	26	+1.4	3.7
Andijan	15	-6	+48	+42	54	+2.8	3.6
Samarkand	12	-8	+37	+29	45	+2.4	3.8
Tashkent	77	-124	+75	-49	199	-0.6	2.6

(III) - 146 + 178 + 32 24 + 0.3 2.9

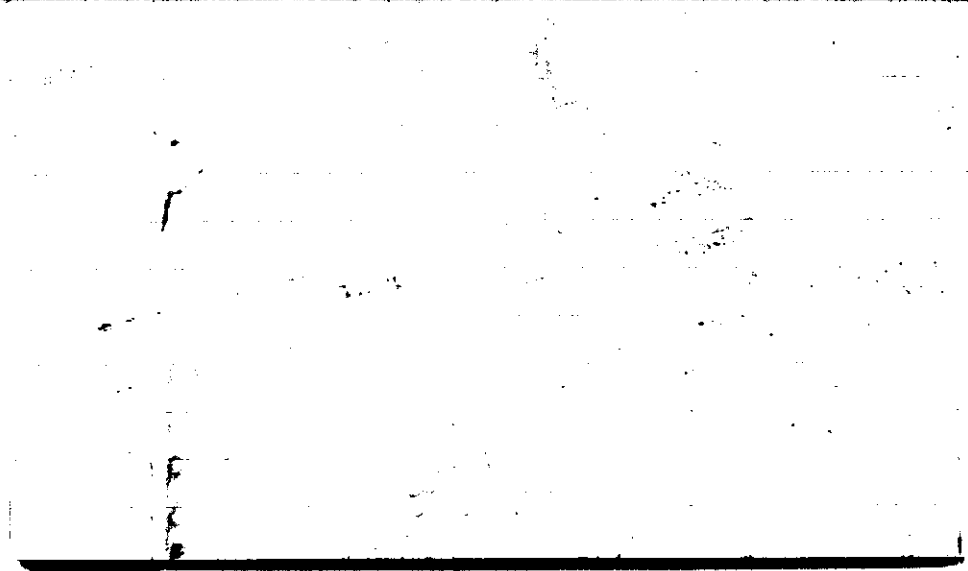


STATE COLLEGE, Pa. Date

FEB 3 1941

Time  
1904

Max.	Wind F NNW 3	Barom. t	General Obs.	
Min.	Vis.km.	p		
Dry 25.7	Clouds > 9	p(red.)		
Wet	Sc			
R.H. 58		Morn.	Foren.	
Precip. 7 mm/ in.		Noon	Aftern.	
Snowfall/-Depth in/ in.		Eve.	Night	



STATE COLLEGE, Pa. Date FEB 4 1941

Time  
0658

Max. 29.3	Wind F N 3	Barom. t 78.0	General Obs. 0700 <input checked="" type="checkbox"/> 6.4° *H 0730-0930
Min. 14.3	Vis. km. 15	p 29.01	1565 : 0 ; - 1645 ci den., cc.
Dry 16.1	Clouds > 9	p(red.) 28.88	
Wet	Sc		
R.H. 56		Morn. cloudy	Foren. cloudy to pthly cloudy <sup>snow flakes</sup>
Precip. 0.0 mm/ T in.		Noon pthly cloudy to fair	Aftern. fair
Snowfall/-Depth in/ in.		Eve. fair	Night fair to pthly cloudy

~~State (11) map~~ N. Am East

Toronto	20	-55	+30	-25	85	-1.2	4.2
Ottawa	29	-55	+32	+23	87	-0.8	3.0
Fordham	5	-19	+2	-17	21	-3.4	4.2
Ithaca	8	-17	+23	+6	40	+0.8	5.0
Georgetown	35	-83	+44	-39	127	-1.1	3.6
Washington	12	-11	+27	+16	38	+1.3	3.2
Northfield	3	-6	+4	-2	10	-0.7	3.3

(112) -246 +162 -84 408 -0.8 3.6

STATE COLLEGE, Pa. Date FEB 4 1941

Time  
1922

Max.	Wind F WSW 2	Barom. t	General Obs.	
Min.	Vis. km. 12+	p		
Dry	Clouds	p(red.)		
Wet				
R.H.		Morn.	Foren.	
Precip. mm/ in.		Noon	Aftern.	
Snowfall/-Depth in/ in.		Eve.	Night	

1. The first part of the document discusses the importance of maintaining accurate records of all transactions. It emphasizes that this is crucial for ensuring the integrity of the financial statements and for providing a clear audit trail. The text notes that any discrepancies or errors in the records can lead to significant complications during an audit and may result in the disallowance of certain expenses.

2. The second part of the document outlines the specific requirements for record-keeping. It states that all receipts, invoices, and other supporting documents must be retained for a minimum of three years. Additionally, it requires that the records be organized in a systematic and logical manner, such as by date or by category, to facilitate the audit process. The document also mentions that electronic records are acceptable, provided they are secure and accessible.

3. The third part of the document provides guidance on how to handle common situations that may arise during the record-keeping process. For example, it addresses the issue of lost receipts, suggesting that a copy of the receipt should be made and the original should be replaced as soon as possible. It also discusses the treatment of cash transactions, noting that they should be recorded in a separate ledger and supported by bank statements or other reliable evidence.

4. Finally, the document concludes by reiterating the importance of diligent record-keeping and the potential consequences of non-compliance. It encourages taxpayers to take the time to maintain accurate records from the start, as this will significantly reduce the risk of an audit and ensure that all legitimate expenses are properly documented and deductible.

STATE COLLEGE, Pa. Date FEB 5 1941

Time 0655

Max. 26.6	Wind F calm	Barom. t 75.0	General Obs. 0700 <input checked="" type="checkbox"/> 6.2' K & ☉; SE LI'
Min. 12.8	Vis. km. 6	p 28.94	
Dry 12.8	Clouds 2	p (red.) 28.77	
Wet	ci, co,		
R.H. 77		Morn. fair	Foren. fair to clear
Precip. mm/ T in.		Noon fair to clear	Aftern. " " "
Snowfall/-Depth in/ in.		Eve. " " "	Night " " pth cloudy

~~Christchurch~~ Simple Russian Stations

Skatering 147 -309 +141 -168 450 -1.1 3.1

Irkutsk 45 -181 +26 -155 207 -3.4 4.6



STATE COLLEGE, Pa. Date

FEB 6 1941

Time

0702

Max. 30.4	Wind F E 2	Barom. t 77.0	General Obs. 0700 W' ok <input checked="" type="checkbox"/> 6.2
Min. 11.8	Vis. km. 2	p 28.73	0750 - 1 - 0755
Dry 12.4	Clouds 5 ok	p (red.) 28.60	
Wet	ci ca		
R.H. 85		Morn. fair	Foren. fair to pth cloudy to cloudy
Precip. mm/ in.		Noon cloudy	Aftern. cloudy to overcast
Snowfall/Depth in/ in.		Eve. overcast to cloudy	Night cloudy

Australia

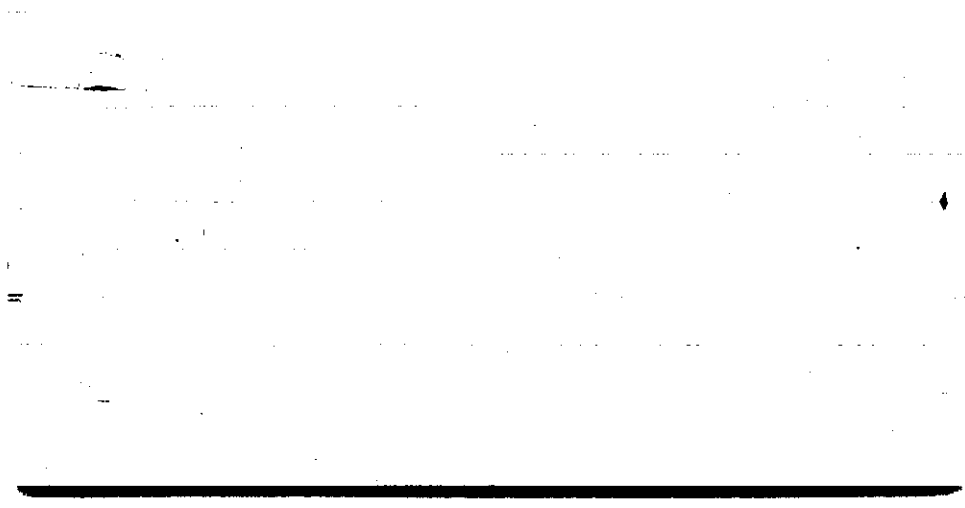
Sydney	2	-7	+4	-3	11	-1.5	5.5
Adelaide	4	-9	+1	-8	10	-2.0	2.5
Melbourne	1	-7	+	-7	7	-7.0	7.0
Perth	4	-15	+	-15	15	-3.8	3.8
Pietermaritzburg	18	-49	+17	-32	66	-1.8	3.7

(29) -87 +23 -65 109 -2.2 3.8

STATE COLLEGE, Pa. Date FEB 6 1941

Time  
1930

Max.	Wind F SSE 3	Barom. t	General Obs.	
Min.	Vis. km. 5	p		
Dry 38.3	Clouds 7	p(red.)		
Wet	as acu			
R.H.		Morn.	Foren.	
Precip. mm/ in.		Noon	Aftern.	
Snowfall/-Depth in/ in.		Eve.	Night	



STATE COLLEGE, Pa. Date

FEB 7 1941

Time

1701

Max. 41.0	Wind F E 3	Barom. t 75.6	General Obs. 0700 <del>B</del> 6.0° ∞°
Min. 12.2	Vis. km. 4	p 28.50	⊙ 1250-1355
Dry 36.1	Clouds 8 as as	p (red.) 28.38	⊙ 1355- ⊙ 1500-2020
Wet			
R.H. 62		Morn. cloudy	Foren. overcast
Precip. mm/ in.		Noon overcast	Aftern. <sup>later snow</sup> " <sup>lgt rain?</sup>
Snowfall/-Depth in/ in.		Eve. " <sup>lgt. snow</sup>	Night " —

Greenland

Scarsby (m) 18 -9 +58 +49 67 +2.7 3.2

STATE COLLEGE, Pa. Date FEB 8 1941

Time  
0701

Max. 40.0	Wind F WNW 5	Barom. t 25.0	General Obs. 7700 <input checked="" type="checkbox"/> 6.2"	11:20AM III WNW 44 mph
Min. 18.5	Vis. km. 3	p 28.18	* ∇ 6:30-0830	
Dry 19.4	Clouds 10	p(red.) 28.03	*M 1210-1220	
Wet	45		*M 1400-1402	
			*P 1845-1910	
R.H. 82		Morn. snow flurries overcast to cloudy	Foren. cloudy to pty cloudy	
Precip. 2.5 mm / 0.10 in.		Noon cloudy to pty cloudy	Aftern. cloudy, snow flurries	
Snowfall/-Depth in/ in.		Eve. "	Night "	

~~Assam~~ India

Hyderabad 29 -54 +33 -21 87 -0.7 3.0

Bombay 50 -47 +103 +56 150 +1.1 3.0

Kodaikanal 4 -18 +7 -11 25 -2.8 6.2

Calcutta 20 -27 +51 +24 78 +1.2 3.9

Singha 14 -12 +34 +22 46 +1.6 3.3

Debra Dun 4 -17 +5 -12 22 -3.0 5.5

Colombo 8 -15 +20 +5 35 +0.6 4.4

(129) -190 +253 +63 443 +0.5 3.4



STATE COLLEGE, Pa. Date

FEB 8 1941

Time  
1902

Max.	Wind F WSW 6	Barom. t	General Obs.	
Min.	Vis. km. p			
Dry 20.4	Clouds > 9 *	p (red.)		
Wet				
R.H. 60		Morn.	Foren.	
Precip. 2.5 mm / 0.10 in.		Noon	Aftern.	
Snowfall / -Depth in / in.		Eve.	Night	

1. The first part of the document discusses the importance of maintaining accurate records of all transactions. It emphasizes that this is crucial for ensuring the integrity of the financial statements and for providing a clear audit trail. The text notes that any discrepancies or errors in the records can lead to significant complications during an audit and may result in the disallowance of certain expenses.

2. The second part of the document outlines the specific procedures for recording transactions. It details the requirements for receipts, invoices, and other supporting documents. It states that all receipts must be properly dated, itemized, and signed by the individual receiving the goods or services. Additionally, it requires that all invoices be promptly filed and that any missing or illegible documents be reported to the appropriate authority.

3. The third part of the document addresses the issue of expense reporting. It explains that employees are required to submit a detailed report of all business-related expenses incurred during the reporting period. This report should include a breakdown of the expenses by category and a clear explanation of the business purpose for each expense. The text also notes that any personal or non-business-related expenses are strictly prohibited and will not be reimbursed.

4. The final part of the document provides information regarding the consequences of non-compliance with these policies. It states that failure to maintain accurate records or to properly report expenses can result in disciplinary action, including suspension or termination. Furthermore, it notes that any fraudulent activity, such as the submission of false receipts or invoices, is considered a serious offense and may lead to criminal prosecution.

STATE COLLEGE, Pa. Date

FEB 9 1941

Time  
0700

Max. 25.4	Wind F W @	Barom. t 20.6	General Obs. * #.0635-0830 ☒ 6.2"
Min. 16.5	Vis. km. 4 <del>20</del>	P 28.52	
Dry 18.7	Clouds 79 *#	p(red.) 28.41	
Wet	Sc		
R.H. 69		Morn. cloudy	Foren. cloudy
Precip. T mm/ .00 in.		Noon "	Aftern. " <sup>fair</sup> to pty cloudy to
Snowfall/-Depth in/ in.		Eve fair to clear	Night clear

~~Rio de Janeiro~~ East Indies

Amboina 4 -18 +5 -13 23 -3.2 5.8

Batavia 59 -130 +77 -53 207 -0.9 3.5

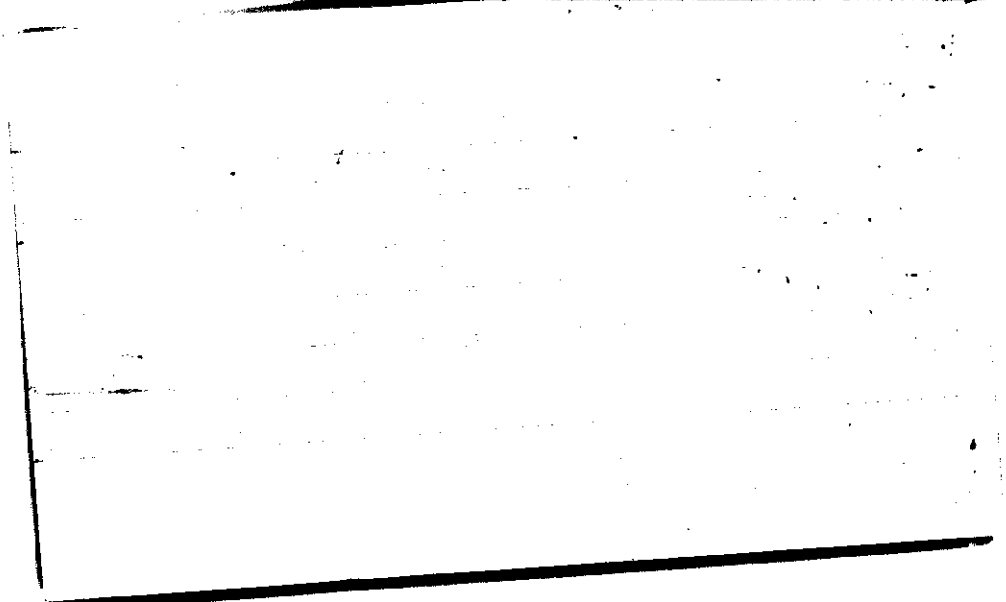
Malabar 4 -13 +8 -5 21 -1.2 5.2

(67) -161 + 90 - 71 251 -1.1 3.7

STATE COLLEGE, Pa. Date FEB 9 1941

Time  
1900

Max.	Wind F W 2	Barom. t	General Obs.
Min.	Vis.km. 20	p	
Dry 25.7	Clouds 0	p(red.)	
Wet			
R.H. 43		Morn.	
Precip. mm/ in.		Noon	Aftern.
Snowfall/-Depth in/ in.		Eve.	Night



STATE COLLEGE, Pa. Date FEB 10 1941

Time  
0702

Max. 30.4	Wind F SE 1	Barom. t 29.0	General Obs. 0700 <del>6.2</del> 6.2' ∞ K i valley to E
Min. 4.3	Vis. km. 8 ∞	p 29.03	0800 visibility 2 mi ∞
Dry 5.9	Clouds 0	p(red.) 28.91	
Wet			
R.H. 70		Morn. clear	Foren. clear
Precip. mm/ in.		Noon "	Aftern. "
Snowfall/-Depth in/ in.		Eve. "	Night "

Mexico

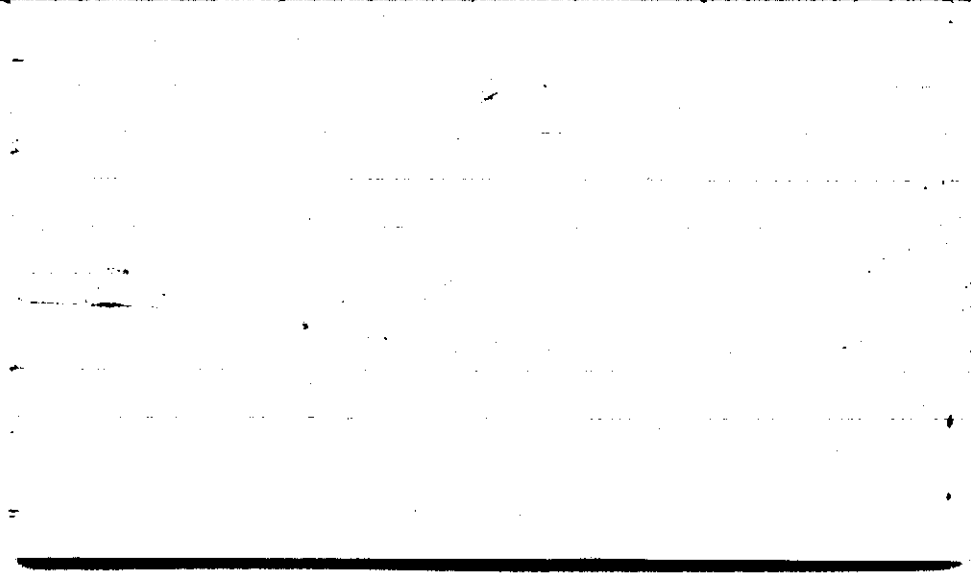
Takulaya (9) -20 +9 -11 29 -1.2 3.2



STATE COLLEGE, Pa. Date FEB. 10 1941

Time  
1900

Max. 50	Wind F E 2	Barom. t 69	General Obs.	
Min.	Vis. km. 25	p 29.02		
Dry 26.4	Clouds 0	p (red.) 28.92		
Wet				
R.H. 30		Morn.	Foren.	
Precip. mm/ in.		Noon	Aftern.	
Snowfall/-Depth in/ in.		Eve.	Night	



STATE COLLEGE, Pa. Date FEB 11 1941

Time  
0658

Max. 33.8	Wind F <i>calm</i>	Barom. t 67.5	General Obs. 0700 4.2" <input checked="" type="checkbox"/>
Min. 5.0	Vis. km. 9	p 29.04	
Dry 11.1	Clouds 0	p(red.) 28.94	
Wet			
R.H. 66		Morn. <i>clear</i>	Foren. <i>clear</i>
Precip. — mm/ in.		Noon "	Aftern. "
Snowfall/-Depth in/ in.		Eve. "	Night "

N. Am. West

Berkeley 23 - 26 + 64 + 38 90 + 1.7 3.9

Wick 13 - 6 + 38 + 32 44 + 2.5 3.4

Tucson 20 - 19 + 61 + 42 80 + 2.1 4.0

(56) - 51 + 163 + 112 214 + 2.0 3.8

Sitka 9 - 13 + 21 + 8 34 + 0.9 3.8

Victoria 25 - 71 + 53 - 18 124 - 0.7 5.0

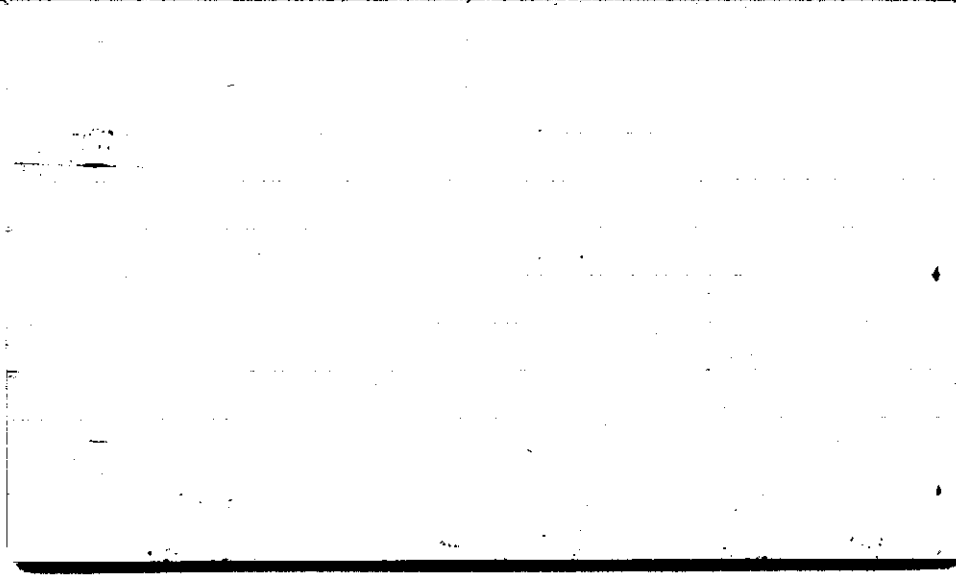
(34) - 84 + 74 - 10 158 - 0.3 4.8

90 - 135 + 237 + 102 372 + 1.1 4.1

STATE COLLEGE, Pa. Date FEB 11 1941

Time  
1900

Max.	Wind P N Z	Barom. t	General Obs.	
Min.	Vis. km. 5	p		
Dry 34.7	Clouds 0	p (red.)		
Wet				
R.H. 45		Morn.	Foren.	
Precip. mm/ in.		Noon	Aftern.	
Snowfall/-Depth in/ in.		Eve.	Night	



STATE COLLEGE, Pa. Date FEB 12 1941

Time  
0702

Max. 72.8	Wind F calm	Barom. t 71.2	General Obs. 0700 <del>8</del> 42" LI'
Min. 10.4	Vis. km. 2	p 29.91	
Dry 20.3	Clouds 6 ci, cs, cc	p (red.) 28.80	
Wet			
R.H. 88		Morn. fair (ci 10)	Foren. fair to clear
Precip. mm/ in.		Noon clear	Aftern. clear to fair
Snowfall/Depth in/ in.		Eve. fair	Night fair to ptly cloudy





STATE COLLEGE, Pa. Date FEB 13 1941

Time  
0702

Max. 48.5	Wind F SE 3	Barom. t 73.0	General Obs. 0700 3.8" <input checked="" type="checkbox"/> LI/0900 <sup>cah</sup> -0945
Min. 20.3	Vis. km. 1/2	p 29.94	7 22:45-2400
Dry 34.5	Clouds 1	p(red.) 29.82	
Wet	as ca		
R.H. 63		Morn. pty cloudy (ca)	Foren. <sup>as trans</sup> cloudy to overcast
Precip. mm/ in.		Noon overcast	Aftern. overcast to cloudy
Snowfall/-Depth in/ in.		Eve. cloudy	Night " , drizzle

~~Batba~~ Hs China

Phu Lien 19 -110 +13 -97 123 -51 6.5

Hong Kong 26 -118 +319 -99 137 -38 6.3

Zikawei 114 -440 +92 -548 532 -30 4.7

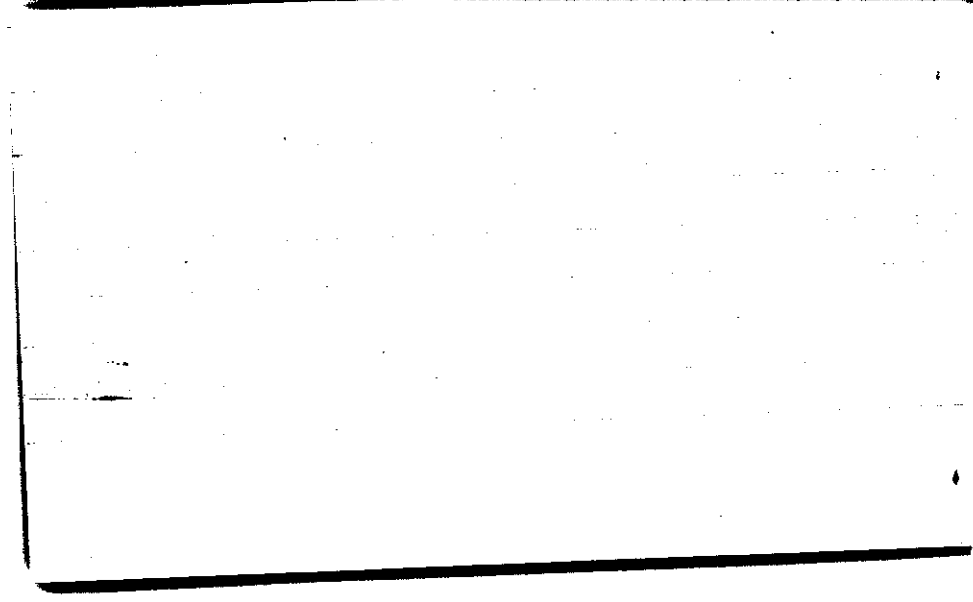
(159) -668 +124 -544 792 -3.4 5.0

STATE COLLEGE, Pa. Date

FEB 13 1941

Time  
1900

Max.	Wind F SE 5	Barom. t	General Obs.	
Min.	Vis.km. 6	p		
Dry 37.9	Clouds 10	p(red.)		
Wet	st sc			
R.H. 74		Morn.	Foren.	
Precip. mm/ in.		Noon	Aftern.	
Snowfall/-Depth in/ in.		Eve.	Night	



STATE COLLEGE, Pa. Date FEB 14 1941

Time  
0202

Max. 80.0	Wind F ESE 2	Barom. t 73.1	General Obs. 0000 7-2:30 ☉ 0230-0610
Min. 34.1	Vis. km. 1.5	p 28.63	0700 ☒ 2.5" 7 0700
Dry 38.2	Clouds 10 7	p(red.) 28.51	7 0910-1100
Wet	Asst		7 1800
R.H. 94		Morn. overcast drizzle	Foren. overcast, drizzle
Precip. 0.2 mm / 0.01 in.		Noon "	Aftern. "
Snowfall/-Depth in/ in.		Eve. " drizzle	Night "

~~Atsuta~~

# Japan

Kobe	117	-225	+263	+38	488	+0.3	4.2
Mizusawa	169	-185	+439	+254	624	+1.5	3.7
Nagasaki	52	-122	+83	-39	205	-0.8	4.0
Nagoya	85	-153	+116	-37	269	-0.4	3.2
Ootomari	63	-55	+244	+189	299	+3.0	4.7
Osaka	121	-174	+310	+136	484	+1.1	4.0
Taihokan	22	-58	+40	-18	98	-0.8	4.5
Tokyo	37	-64	+85	+21	149	+0.6	4.0

(666) - 1036 + 1580 + 544 2616 + 0.8 3.9

STATE COLLEGE, Pa. Date FEB 15 1941

Time  
0704

Max. 40.1	Wind F W 5	Barom. t 68.0	General Obs. 0700 <del>2.0</del>
Min. 28.8	Vis. km. 12	p 28.69	* 0930-1000 * 1040-1430
Dry 28.8	Clouds sc	p (red.) 28.59	
Wet	st.		
R.H. 70		Morn. overcast	Foren. overcast snow flurry <sup>cloudy</sup>
Precip. 0.2 mm / 0.01 in.		Noon cloudy snow flurry	Aftern. cloudy
Snowfall/-Depth in/ in.		Eve. "	Night "

~~As~~

St  
Kyria

20-60 N  
140-180 E

1918-29

Ksara (#) -73 +39 -34 112 -0.8 2.8

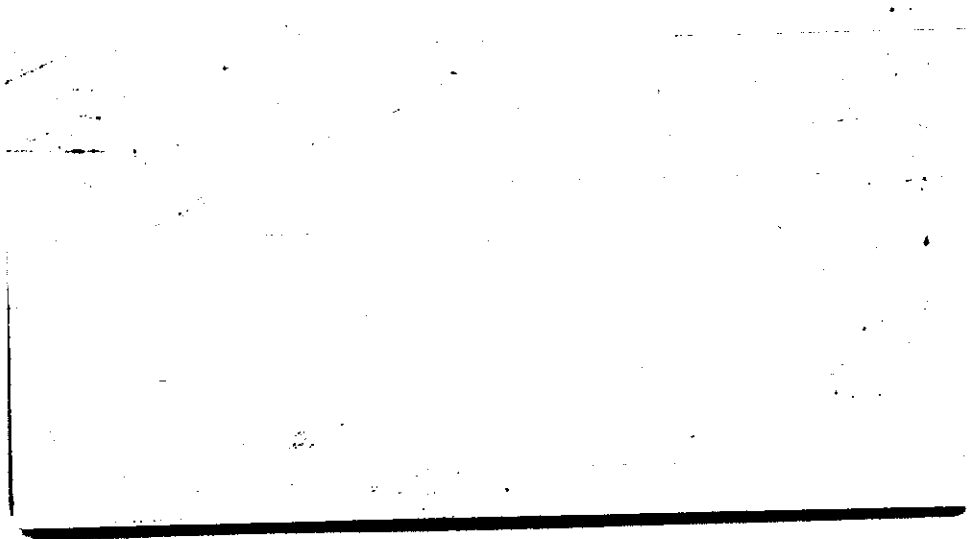


STATE COLLEGE, Pa. Date

FEB 15 1941

Time  
1902

Max.	Wind F NW 3	Barom. t	General Obs.	
Min.	Vis. km. 15	p		
Dry 28.4	Clouds > 9	p(red.)		
Wet	sc			
R.H. 62		Morn.	Foren.	
Precip. mm/ in.		Noon	Aftern.	
Snowfall/-Depth in/ in.		Eve.	Night	



STATE COLLEGE, Pa. Date FEB 16 1944

Time  
0700

Max. 31.0	Wind F NNW 4	Barom. t 70.5	General Obs. 0700 <del>27</del> 2.1'
Min. 19.4	Vis. km. 50	p 28.81	
Dry 19.6	Clouds 7	p(red.) 28.70	
Wet	Sc		
R.H. 64		Morn. cloudy	Foren. cloudy
Precip. 0.2 mm / 0.01 in.		Noon "	Aftern. "
Snowfall / -Depth in / in.		Eve. clear to cloudy	Night overcast

~~Basel~~ N Africa

Algiers 12 -77 +0 -77 77 -6.4 6.4

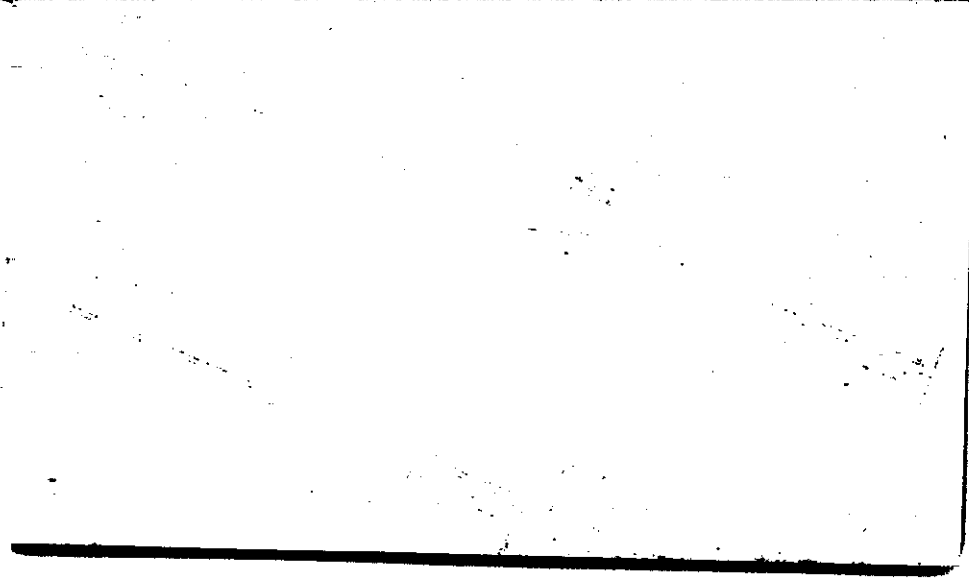
Helwan 29 -148 +1 -147 149 -5.1 5.1

(41) -225 +1 -224 226 -5.5 5.5

STATE COLLEGE, Pa. Date FEB 16 1941

Time 1904

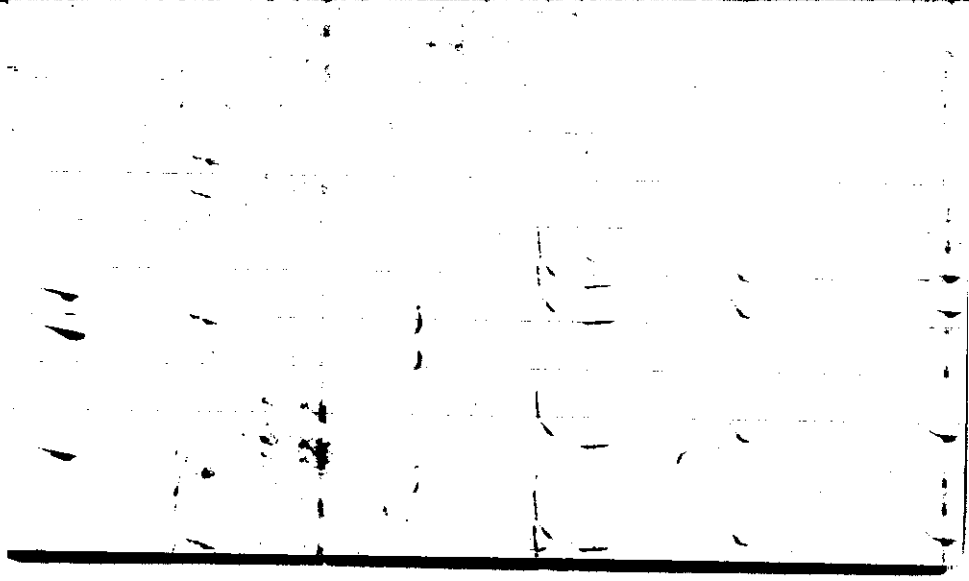
Max. 29.2	Wind P W 3	Barom. t	General Obs.
Min.	Vis. km. 9	p	
Dry 23.6	Clouds 0	p(red.)	
Wet			
R.H. 48		Morn.	Foren.
Precip. mm/ in.		Noon	Aftern.
Snowfall/-Depth in/ in.		Eve.	Night



STATE COLLEGE, Pa. Date **SEP 17 1941**

Time  
0700

Max. 29.2	Wind F SSE 2	Barom. t 29.0	General Obs. 1700 <del>2.2</del> "
Min. 20.0	Vis. km. 4	p 29.33	* 0230-0800
Dry 23.4	Clouds 10	p (red.) 29.23	* 0800-1400
Wet	cs 7 fs 2		1415 * <sup>2</sup> 1443 1443 * <sup>1</sup> -1850 ↕
R.H. 88		Morn. overcast lgt snow	Foren. overcast snow
Precip. mm/ in.		Noon " snow	Aftern. overcast with breaks, lgt. snow later snow showers & gusts, 1440-1450
Snowfall/-Depth in/ in.		Eve. fair	Night fair to lty cloudy

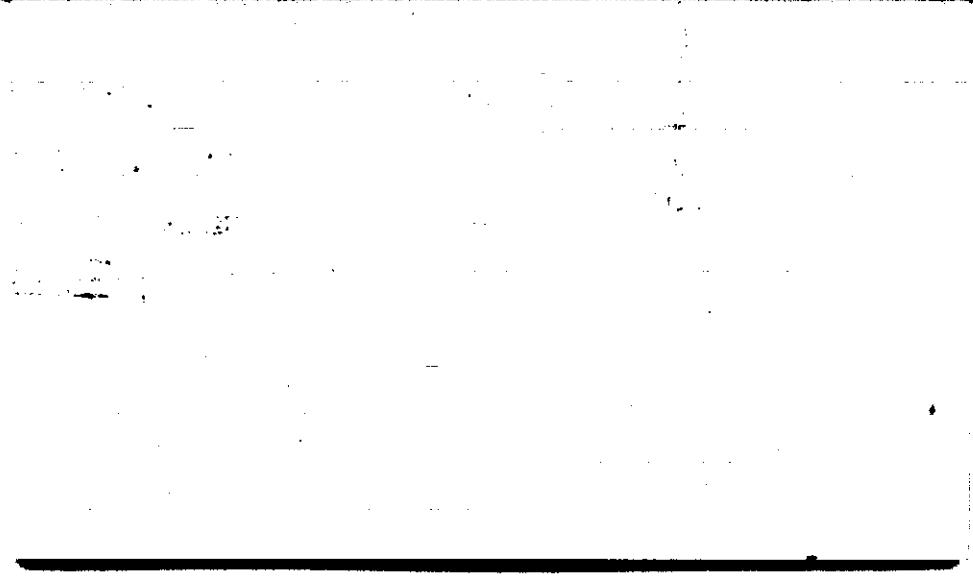




STATE COLLEGE, Pa. Date FEB 17 1941

Time  
1958

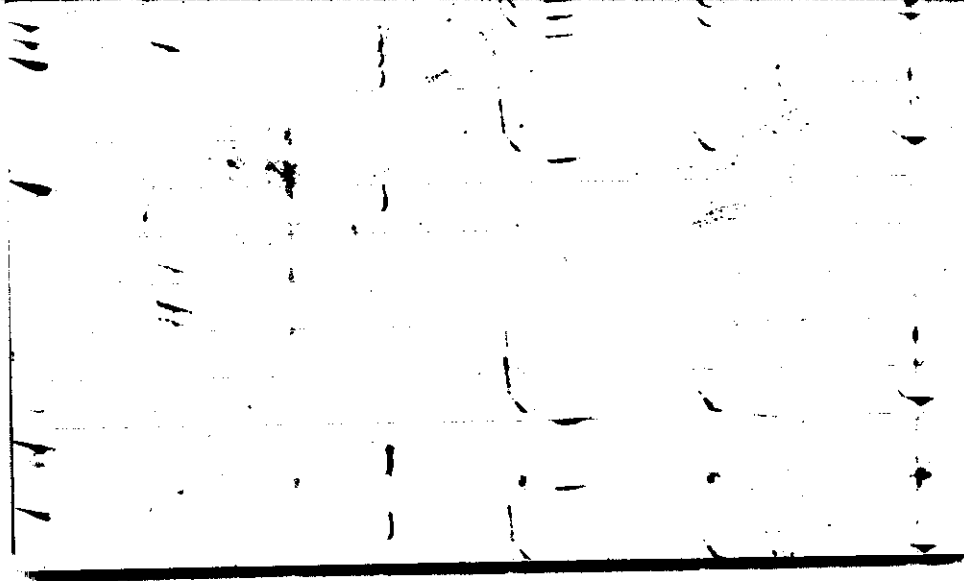
Max. 32.2	Wind F W 7	Barom. t	General Obs.	
Min. 22.5	Vis. km. 3	p		
Dry 26.6	Clouds hs	p(red.)		
Wet				
R.H. 83		Morn.	Foren.	
Precip. 2.2 mm/ in.		Noon	Aftern.	
Snowfall/-Depth in/ in.		Eve.	Night	



STATE COLLEGE, Pa. Date FEB 18 1941

Time  
0655

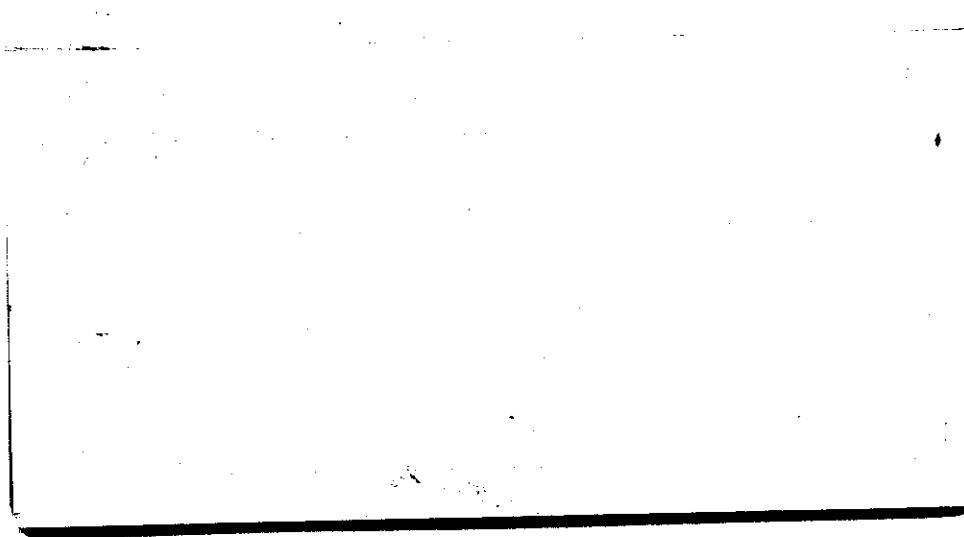
Max. 32.2	Wind F WNW 8	Barom. t 63.0	General Obs. 0700 <del>29</del> 29
Min. 12.2	Vis. km. 15	p 28.44	
Dry 12.2	Clouds 8	p(red.) 28.35	
Wet	fsc		
R.H. 60		Morn. cloudy	Foren. cloudy (to recent to)
Precip. 2.2 mm / 0.09 in.		Noon cloudy, many gust	Aftern. 4 to pthly cloudy
Snowfall/-Depth in/ in.		Eve. pthly cloudy (ci floc)	Night pthly cloudy



STATE COLLEGE, Pa. Date FEB 18 1941

Time  
1855

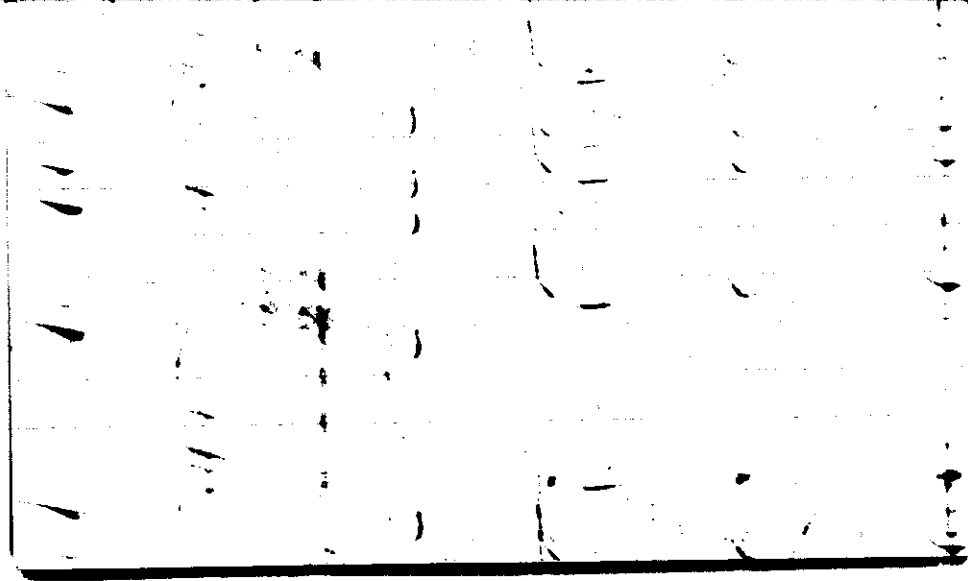
Max. 17.8	Wind F WNW 5	Barom. t 63.0	General Obs.	
Min.	Vis. km. 8	p 28.44		
Dry 10.2	Clouds fsc	p(red.) 28.35		
Wet				
R.H. 52		Morn.	Foren.	
Precip. mm/ in.		Noon	Aftern.	
Snowfall/-Depth in/ in.		Eve.	Night	



STATE COLLEGE, Pa. Date **FEB 19 1941**

Time  
0656

Max. 77.8	Wind F WNW 5	Barom. t 60.0	General Obs. 0700 <del>2.5</del> * // 0635-0830
Min. 10.2	Vis.km. +	p 28.77	/* / 2000-2400 ▽
Dry 10.2	Clouds 9+	p(red.) 28.69	
Wet	Sc		
R.H. 67		Morn. cloudy	Foren. pty cloudy
Precip. mm/ in.		Noon pty cloudy	Aftern. " " to cloudy
Snowfall/-Depth in/ in.		Eve. cloudy	Night

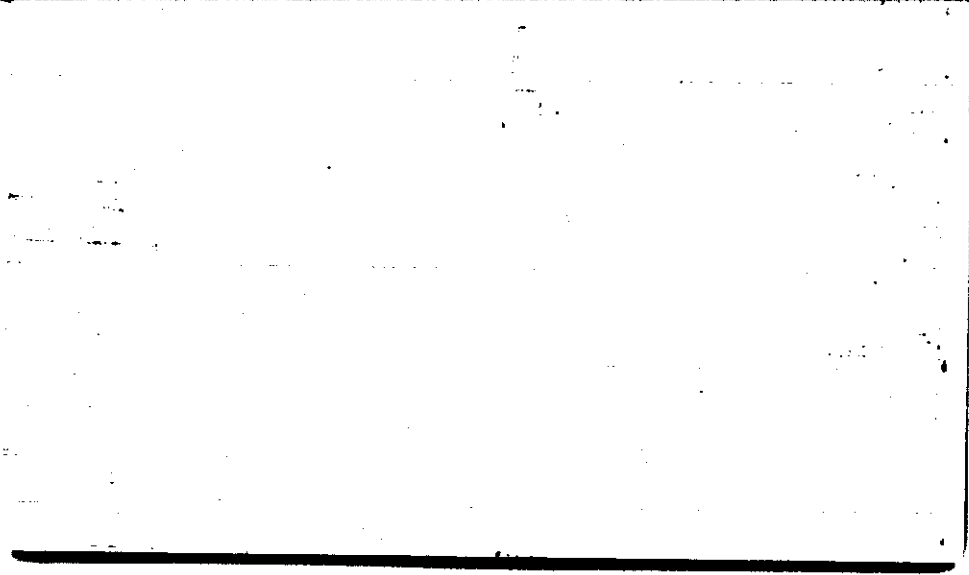




STATE COLLEGE, Pa. Date FEB 19 1941

Time  
1700

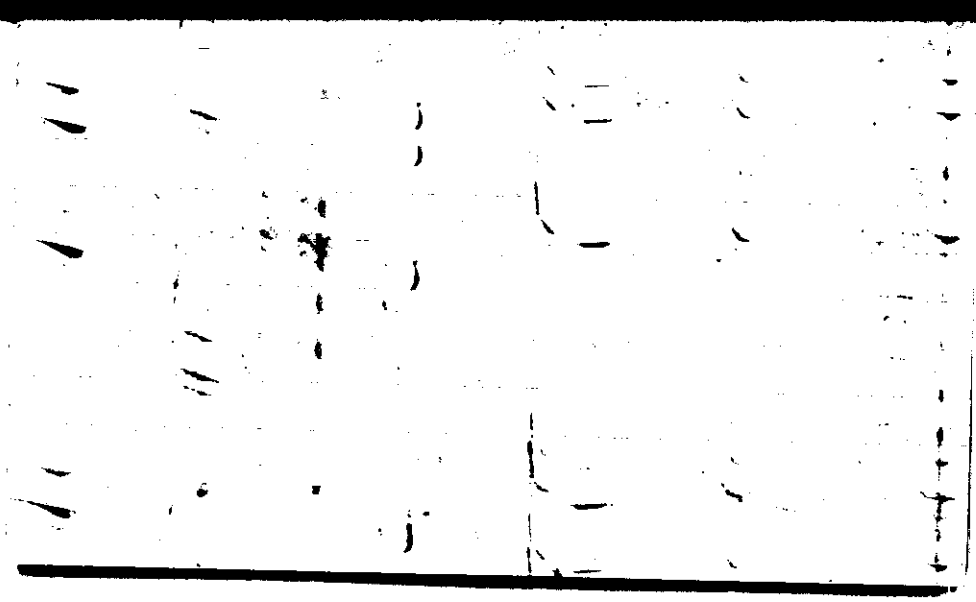
Max. 17.6	Wind F W 4	Barom. t	General Obs.	
Min.	Vis. km. 4	p		
Dry 14.6	Clouds 1+	p(red.)		
Wet	Sc			
R.H. 57		Morn.	Foren.	
Precip. T mm/ in.		Noon	Aftern.	
Snowfall/-Depth in/ in.		Eve.	Night	



STATE COLLEGE, Pa. Date FEB 20 1941

Time  
0658

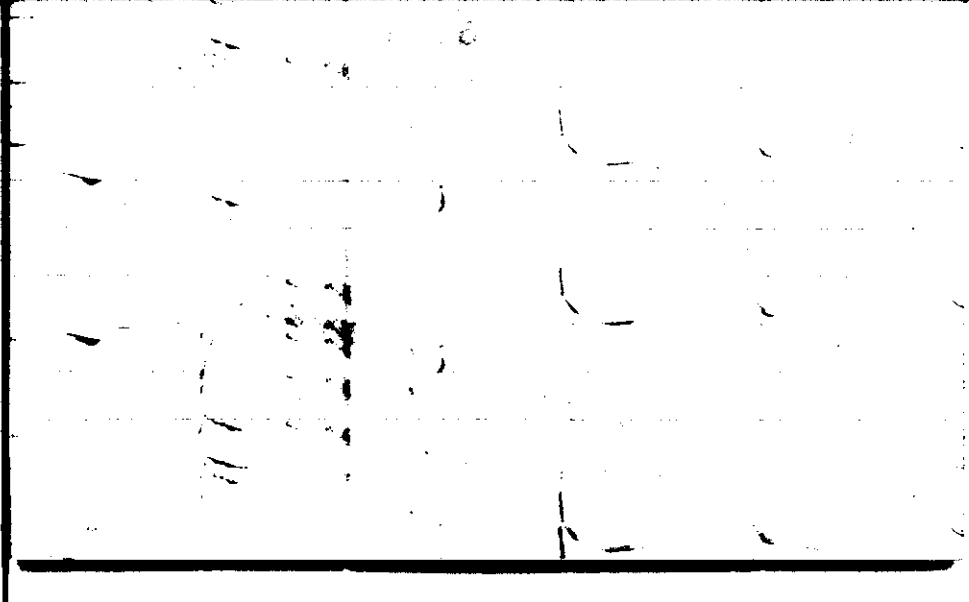
Max. 17.6	Wind F W 5	Barom. t 59.5	General Obs. 0700 <del>22</del> " 0715 *fl-9:30	
Min. 10.0	Vis. km. 6	p 28.84	*° / 0015-0030 *fl. 12:30; 1715 1920	
Dry 13.3	Clouds 9	p(red.) 28.76		
Wet	Sc			
R.H. 67		Morn. overcast	Foren. cloudy snow flakes	
Precip. 1 mm/ in.		Noon cloudy snow flakes	Aftern. " " "	
Snowfall/-Depth in/ in.		Eve. " " "	Night " " "	



STATE COLLEGE, Pa. Date FEB 21 1941

Time  
0700

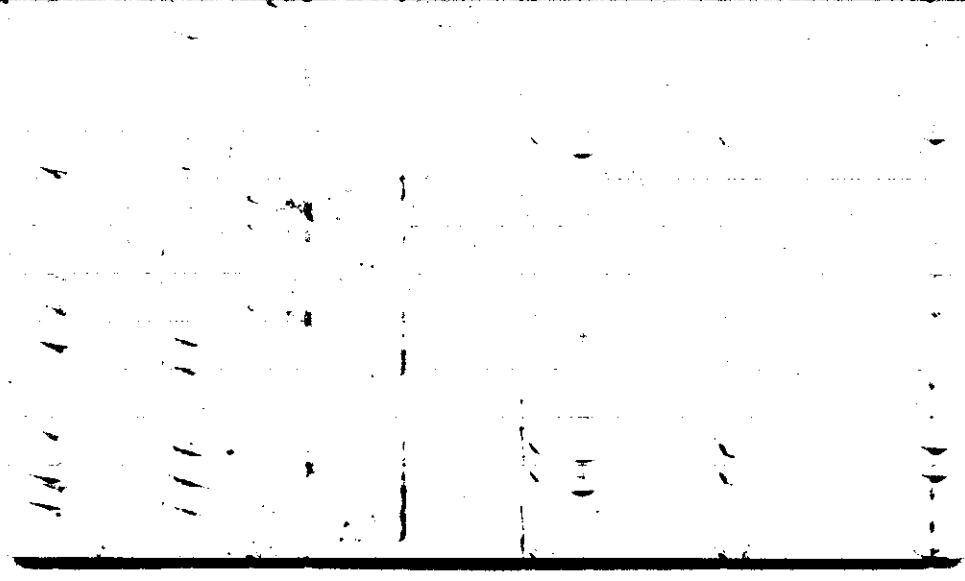
Max. 22.7	Wind F W 5	Barom. t 63.2	General Obs. 0700 <del>2.2</del> " *fl 0630-0930 *fl. 1545-1830
Min. 12.1	Vis. km. 8	p 29.74	
Dry 18.3	Clouds > 9 *fl	p(red.) 28.65	
Wet	Sc		
R.H. 76		Morn. cloudy	Foren. cloudy snow flurries
Precip. T mm/0.0 in.		Noon " to sunset	Aftern. overcast
Snowfall/-Depth in/ in.		Eve. overcast snow flurries	Night "



STATE COLLEGE, Pa. Date **FEB 22 1941**

Time  
0707

Max. 26.0	Wind F NW 4	Barom. t 66.2	General Obs. 0700 <del>2.2</del>	
Min. 18.0	Vis. km. 1.5	p 28.71	*H 0530-0930	
Dry 23.4	Clouds 10 *H	p(red.) 28.61	* 0930-2015	
Wet	not SC			
R.H. 89		Morn. overcast <sup>sun</sup> flake	Foren. overcast light snow	
Precip. T mm/D.O in		Noon " lgt. snow	Aftern. " " "	
Snowfall/-Depth in/ in		Eve. " " "	Night " " "	





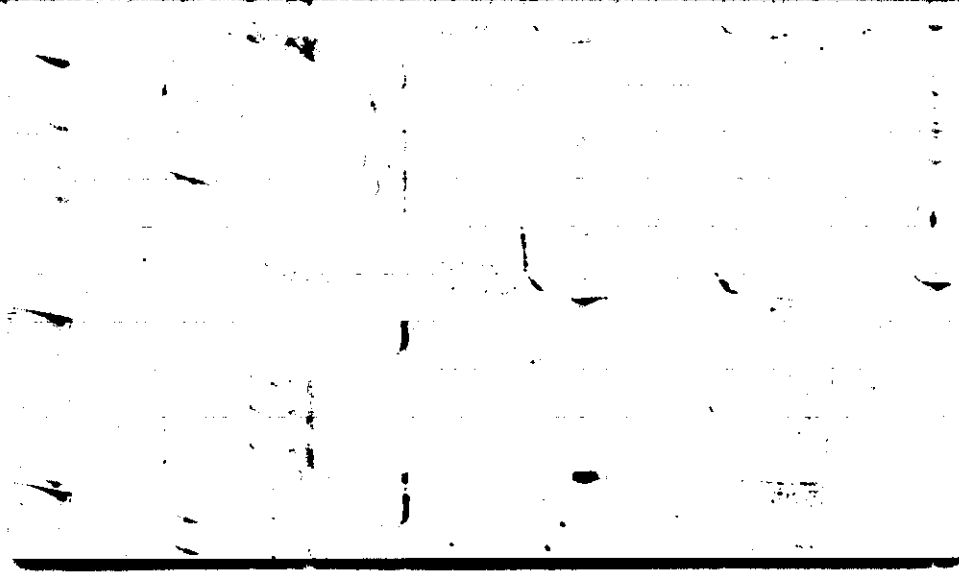
STATE COLLEGE, Pa. Date

FEB 23 1941

Time

0702

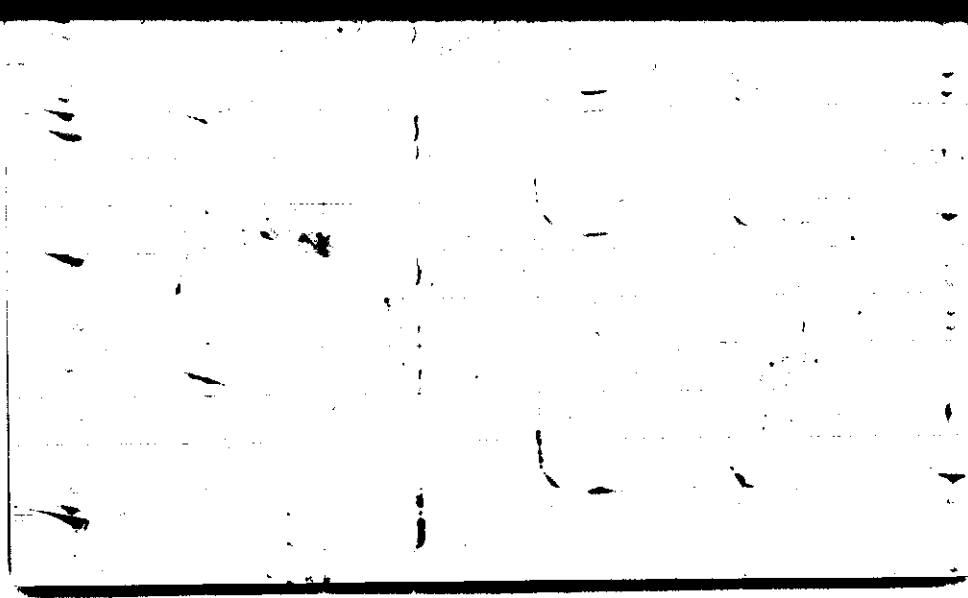
Max.	Wind F	Barom.	General Obs.	
27.0	WNW 3	t 69.0	0700 <del>2.5</del> "	
Min.	Vis. km.	p		
23.4	25	28.79		
Dry	Clouds	p(red.)		
23.4	5	29.68		
Wet	sc fr.co.			
R.H.	act but	Morn.	Foren.	
76		<i>ptly cloudy</i>	<i>ptly cloudy</i>	
Precip.	Neon	Aftern.		
0.4 mm/0.02 in.	"	" " <del>cloudy</del>		
Snowfall/-Depth	Eve.	Night		
in/ in.	"	<i>to fair</i> <i>fair</i>		



STATE COLLEGE, Pa. Date **FEB 24 1941**

Time  
0705

Max. 31.1	Wind F W 1	Barom. t 67.5	General Obs. 0700 LI° <del>2.2</del>
Min. 15.0	Vis. km. 25	p 28.95	
Dry 15.8	Clouds 1.0	p(red.) 28.85	
Wet	fr co ca		
R.H. 74		Morn. fair	Foren. fair
Precip. mm/ in.		Noon "	Aftern. clear
Snowfall/-Depth in/ in.		Eve. fair to pty cloudy	Night pty cloudy



STATE COLLEGE, Pa. Date FEB 24 1941

Time  
1906


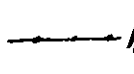
Max. 93.6	Wind F W 2	Barom. t	General Obs.
Min.	Vis.km. 20	p	
Dry 28.4	Clouds 2	p(red.)	
Wet	a u		
R.H.43		Morn.	Foren.
Precip. mm/ in.		Noon	Aftern.
Snowfall/-Depth in/ in.		Eve.	Night

Ravenbury (9) <sup>+4</sup> -17 + 21 38 + 0.4 4.2

7  
-3  
-3  
-3  
-2  
-5  
9

STATE COLLEGE, Pa. Date **SEP 25 1941**

Time

Max. 33.6	Wind F calm	Barom. t 71.0	General Obs. 0700 <del>BE</del> 0.9" 0820 
Min. 15.8	Vis. km. 15	p 28.83	0910 <del>6</del> -12 <sup>h</sup> 70°
Dry 23.6	Clouds 10	p (red.) 28.72	0900 
Wet	as 4 w 1 ab 5		
R.H. 69		Morn. overcast	Foren. this
Precip. mm/ in.		Noon increasing cs	Aftern. cloudy
Snowfall/-Depth in/ in.		Eve. cloudy	Night

Handwritten notes on a page with horizontal lines. The text is extremely faint and illegible, appearing as dark smudges and light gray marks against the white background. The notes are organized into several columns, possibly representing a list or a table of data.



STATE COLLEGE, Pa. Date FEB 25 1941

Time  
1852

Max. <del>40.0</del> 31.1	Wind F WNW 4	Barom. t	General Obs.
Min. 31.1	Vis. km. 8	p	
Dry 334	Clouds 9 sc	p(red.)	
Wet			
R.H. 56		Morn.	Foren.
Precip. - mm/ in.		Noon	Aftern.
Snowfall/-Depth in/ in.		Eve.	Night

- Reykjavik (2) <sup>+13</sup> - +13 13 +6.5 6.5  
4  
9

+6

+6

6

+6.0

6.0

STATE COLLEGE, Pa. Date FEB 26 1941

Time  
0655

Max. 39.6	Wind F W 2	Barom. t 71.2	General Obs. 0700 L <sup>o</sup> <input checked="" type="checkbox"/> 0.5 <i>intermittent</i>
Min. 14.7	Vis. km. 40	p 29.02	
Dry 14.7	Clouds 7	p(red.) 29.91	
Wet	ast. cst		
R.H. 65	cc ac	Morn. <i>cloudy</i>	Foren. <i>ptly cloudy to fair</i>
Precip. mm/ in.		Noon. <i>fair</i>	Aftern. <i>fair to ptly cloudy to cloudy</i>
Snowfall/-Depth in/ in.		Eve. <i>overcast</i>	Night <i>overcast to cloudy</i>

Spain & Portugal

Alicante	(17)	-21	+71	+50	100	+2.4	6.0
Almeria	(40)	-77	+77	+9	109	0.0	3.0
Barcelona	(15)	-21	+21	+5	47	+0.3	3.1
Genova	(79)	-77	+31	+140	224	+1.8	3.7
Malaga	(31)	-48	+70	+28	124	-0.3	4.0
San Fernando	(19)	-9	+81	+12	90	+3.2	4.7
Torona	(46)	-31	+162	+131	193	+2.2	4.2
Valencia	(15)	-34	+30	+4	64	-0.3	4.5
London	(2)	-	+12	+12	12	+6.0	6.0
	(264)	-328	+752	+424	1080	+1.6	4.1

STATE COLLEGE, Pa. Date **FEB 27 1941**

Time  
0702

Max. 34.1	Wind F NE 3	Barom. t 21.0	General Obs. 0700 <del>☐</del> ☑ T
Min. 14.7	Vis. km. 15	p 28.92	0705 ...   0710 . T
Dry 16.1	Clouds 8 co	p (red.) 29.81	0720 & T   0745 ...   0810 ...
Wet			1710-1715 (⊕) <span style="float: right;">wind</span>
R.H. 80		Morn. cloudy	Foren cloudy to thin overcast
Precip. mm/ in.		Noon thin overcast	Aftern ☑ overcast
Snowfall/-Depth in/ in.		Eve. overcast	Night "

Green

Athens (1) - 1000 00 10

STATE COLLEGE, Pa. Date

FEB 28 1941

Time

0702

Max. 29.9	Wind F N 4	Barom. t 71.0	General Obs. * 6 <sup>h</sup> -1025 ≡ 6 <sup>h</sup> -0745	
Min. 15.3	Vis. km. 1/2	p 28.72	0100 <input checked="" type="checkbox"/> 0.1" * 1615-2235	
Dry 15.3	Clouds 10	p(red.) 28.61		
Wet	A.S.T.			
R.H. 90		Morn. overcast snow	Foren. overcast snow	
Precip. 0.02 mm / 0.01 in.		Noon "	Aftern. " "	
Snowfall/-Depth in/ in.		Eve. " snow	Night " "	

1.  $(159) = 120 + 39$   
 2.  $(159) = 120 + 39$   
 3.  $(159) = 120 + 39$   
 4.  $(159) = 120 + 39$   
 5.  $(159) = 120 + 39$   
 6.  $(159) = 120 + 39$   
 7.  $(159) = 120 + 39$   
 8.  $(159) = 120 + 39$   
 9.  $(159) = 120 + 39$   
 10.  $(159) = 120 + 39$

$$(159) = 120 + 442 + 322 \cdot 562 + 2.0 \cdot 3.5$$