

STATE COLLEGE, Pa. Date **MAR 1 1941**

Time
6:55

Max. 22.1	Wind F NNW 3	Barom. t 68	General Obs.	
Min. 14.9	Vis. km. 15	p 28.78	7:00	0.5" 9 ¹⁵ -2.12 *H 14 ¹⁵ *H
Dry 17.8	Clouds 15 SC	p (red.) 28.68		
Wet				
R.H. 70		Morn. overcast	Foren. overcast to cloudy	
Precip. 1.1 mm / 0.04 in.		Noon cloudy	Aftern. cloudy	
Snowfall / -Depth in / in.		Eve. "	Night " to fair to partly cloudy	

6
+4
Kpiz (2) 5.0
- 0 + 10
01 + 5.0
5.0

STATE COLLEGE, Pa. Date

MAR 2 1941

Time

6:52

Max. 30.7	Wind F W 2	Barom. t 69.8	General Obs. 7° <input checked="" type="checkbox"/> T U'
Min. 15.0	Vis. km. 25	p 28.87	
Dry 16.3	Clouds ci, co	p(red.) 28.76	
Wet			
R.H. 63		Morn. fair	Foren. fair
Precip. 0.0 mm/T in.		Noon "	Aftern. "
Snowfall/-Depth in/ in.		Eve. "	Night "

4
3
0
5
-1
-2
9
4
2
8
-3
5
0

Andrian (15) -6 + 48
+ 42
54 + 2.8
3.6

STATE COLLEGE, Pa. Date **MAR 3 1941**Time
7:10

Max. 42.8	Wind F WSW 3	Barom. t 23.0	General Obs. 11:20 ●°-1150
Min. 16.0	Vis. km. 15	p 28.56	12:05-12:10 ●°
Dry 42.8	Clouds 79	p(red.) 28.44	20:05-22:15 ●°
Wet	sc		23 ^h -24 ⁰⁰ ●° ▽
R.H. 67	Morn cloudy	Foren. overcast, slight rain	
Precip. mm/ in.	Noon overcast, lgt rainshowers	Aftern. occasional rain- " overcast with breaks -showers	
Snowfall/-Depth in/ in.	Eve. " rainshowers	Night " rainshowers	

-5
6
-9
4
-9

Almeria (S) -23 +10 33 -2.6 66

-13

STATE COLLEGE, Pa. Date **MAR 3 1941**

Time
1855

Max. 51.2	Wind F WSW 6	Barom. t	General Obs.	
Min. 42.5	Vis. km. 11	p		
Dry 51.2	Clouds 79	p (red.)		
Wet	st 8 as > 1			
R.H. 74		Morn.	Foren.	
Precip. ✓ mm/ in.		Noon	Aftern.	
Snowfall/-Depth in/ in.		Eve.	Night	

Max. 51.2	Wind F NNW 5	Barom. t 72.5	General Obs. *° 0615 - 8 ²⁵ ∇ 0:00-1:05 *° 0935-10:05	
Min. 33.8	Vis. km. 9	p 28.47		
Dry 33.8	Clouds 10 cb 4 fs 6	p(red.) 28.36		
Wet				
R.H. 87		Morn. overcast, light snow	Foren. overcast, snow ft to cloudy	
Precip. 4.4 mm / 0.17 in.		Noon cloudy (cc, ac, cc ci, floc)	Aftern. cloudy to pthly cloudy	
Snowfall / -Depth in / in.		Eve. pthly cloudy, occ. furs	Night pthly cloudy	

Handwritten notes on lined paper, including the word "Amblyopia (4)", the number "13", and a list of numbers: "5 - 5 - 5 - 8".

5 -
5 -
5 -
8 -

Amblyopia (4)

13

5 - 5 - 5 - 8 - 18 + 5 23 - 3.2 5.1

STATE COLLEGE, Pa. Date **MAR 4** 1941

Time
1905

Max. 33.8	Wind F NNW 4	Barom. t	General Obs. * 0615
Min.	Vis. km. 25	p	
Dry 18.5	Clouds < 1	p (red.)	
Wet	ci		
R.H. 43		Morn.	Foren.
Precip. J mm/ in.		Noon	Aftern.
Snowfall/-Depth in/ in.		Eve.	Night

Wellington ⁻⁴ 2, -4 +0 4 -2.0 2.0
-4

STATE COLLEGE, Pa. Date

MAR 5 1941

Time
6:58

Max. 33.6	Wind F W 3	Barom. t 70.0	General Obs. 7:00 <input checked="" type="checkbox"/> * fl 5-9
Min. 13.1	Vis. km. 30	p 29.02	
Dry 17.1	Clouds 7 $\text{\textcircled{3}}$	p (red.) 28.91	
Wet	Sc		
R.H. 70		Morn cloudy	Foren ptly cloudy
Precip. mm/ in.		Noon ptly cloudy to fair	Aftern. " " to fair
Snowfall/ -Depth in/ in.		Eve. clear	Night clear

STATE COLLEGE, Pa. Date **MAR 5 1941**

Time
1905

Max. 32.0	Wind F WNW 3	Barom. t	General Obs.
Min. 17.1	Vis. km. 10	p	
Dry 29.1	Clouds 1 sc	p(red.)	
Wet			
R.H. 47		Morn.	Foren.
Precip. mm/ in.		Noon	Aftern.
Snowfall/-Depth in/ in.		Eve.	Night

STATE COLLEGE, Pa. Date **MAR 6 1941**

Time
7:07

Max. 31.6	Wind F W 3	Barom. t 72.0	General Obs. 7: ☒ T 11 ⁴⁵ ☉ 13 ⁰⁰ ☉
Min. 17.1	Vis. km. 12	p 29.01	* p 10 ⁵ -10 ⁷ 14 ⁰⁰ ☉ 15 ⁴⁵ ☉ -16 ^h (comets, castles)
Dry 22.8	Clouds 79	p (red.) 28.90	
Wet	sc		
R.H. 71		Morn cloudy	Foren. cloudy
Precip. 0.0 mm/ T in.		Noon "	Aftern. pthy cloudy to fair 8/10 ci
Snowfall/-Depth in/ in.		Eve. fair to clear	Night clear

+8

-5 + 13 18

+0.9 20

STATE COLLEGE, Pa. Date **MAR 7 1941**

Time
7:02

Max. 33.4	Wind F ENE 2	Barom. t 68.0	General Obs. 7:00 ☒ T ☐°	
Min. 20.5	Vis. km. 20	p 29.18	11:20 *°-24	
Dry 24.2	Clouds 10	p(red.) 29.08	≡° 18-24	
Wet	as SE			
R.H. 82		Morn. overcast	Foren. overcast, snow	
Precip. 0.0 mm/T in.		Noon overcast, snow	Aftern. " "	
Snowfall/Depth in/ in.		Eve. " "	Night " "	

1
-7
1
-2
-9
fontanel (4) - 10 + 1 11 - 2.2 2.8

STATE COLLEGE, Pa. Date **MAR 7 1941**Time
17:20

Max.	Wind F	Barom.	General Obs.
Min.	Vis. km.	t	
Dry 21.2	Clouds 10 * =	p (red.)	
Wet			
R.H. 97		Morn.	Foren.
Precip. 4 mm/ in.		Noon	Aftern.
Snowfall/-Depth in/ in.		Eve.	Night

STATE COLLEGE, Pa. Date **MAR 8 1941**Time
7:05

Max. 25.4	Wind F NE 2	Barom. t 67.0	General Obs. <input checked="" type="checkbox"/> 5.7" \equiv 0-24:00	
Min. 21.2	Vis. Km. 750	p 28.62	* 0:00-24:00	
Dry 22.7	Clouds, 10 \equiv * nst	p (red.) 28.52	13:00 <input checked="" type="checkbox"/> 6.1	
Wet			19:00 <input checked="" type="checkbox"/> 8.5	
R.H. 98		Morn. overcast, snow	Foren. overcast, snow	
Precip. 9.4 mm / 0.37 in.		Noon " "	Aftern. " "	
Snowfall / -Depth in / in.		Eve. " "	Night " "	

11601768034
2 6 2 1 3 4

+36
- Akita (16) -14 +50 64
+2.2 4.0

STATE COLLEGE, Pa. Date

MAR 3 1941

Time
19:00.

Max.	Wind F NE 4	Barom. t	General Obs.
Min.	Vis. m. 500	p	
Dry 28.4	Clouds ≡	p (red.)	
Wet			
R.H. 99		Morn.	Foren.
Precip. 6.3 mm/ in		Noon	Aftern.
Snowfall/-Depth in/ in		Eve.	Night

		-35			
Y ₁		-45	+ 10	55	-1.2 2.0
-1	-1				
-2	-1				
1	-5				
-1	-2				
0	-1				
-1	-5				
3					
-1					
1					
-3					
1					
0					
-2					
-1					
1					

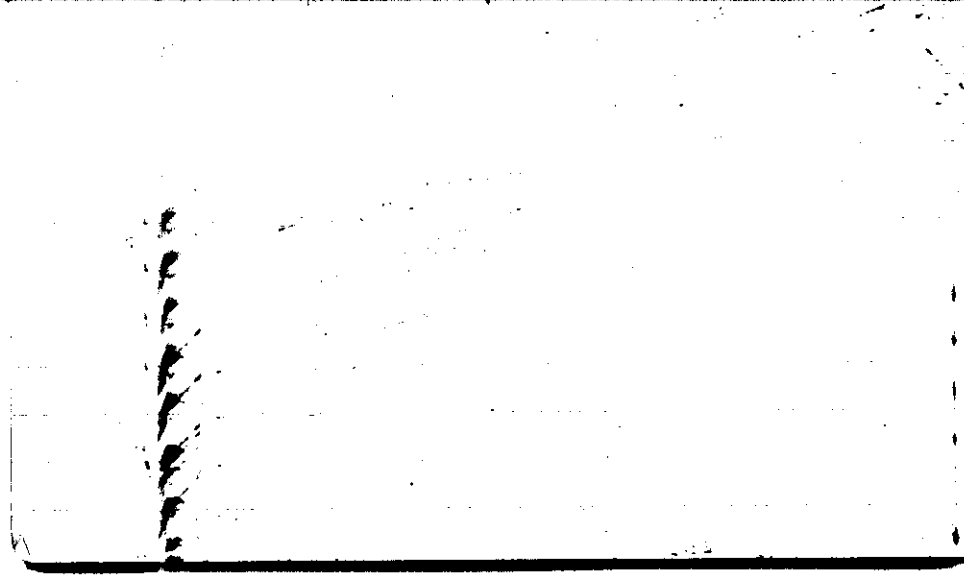
STATE COLLEGE, Pa. Date

MAR 3 1941

Time

1300

Max.	Wind F NE 3	Barom. t	General Obs.	
Min.	Vis. m. 750	p		
Dry 30.2	Clouds 10 *	p(red.)		
Wet	inst \equiv °			
R.H. 96		Morn.	Foren.	
Precip. 0.5 mm/ in.		Noon	Aftern.	
Snowfall/-Depth in/ in.		Eve.	Night	



STATE COLLEGE, Pa. Date **MAR 9 1941**

Time
7:00

Max. 30.6	Wind F N 2	Barom. t 71.0	General Obs. * 0:00-7:15 \equiv 0:00-7:15 <input checked="" type="checkbox"/> l. 11.5 snow 5.8	
Min. 22.1	Vis. km. 750	p 28.24	1 * / 8:30-16:00	
Dry 22.3	Clouds 10 *	p (red.) 28.13		
Wet	Sc nst =			
R.H. 92		Morn. overcast, snow	Foren. cloudy to overcast, snow	
Precip. 10.1 mm / 0.40 in.		Noon cloudy to overcast, snow	Aftern. " " "	
Snowfall / -Depth in / in.		Eve. overcast	Night cloudy to pthly cloudy	

-9
-8
-6
-9
-3
-8
-8
-7
-6
-4
-3
-6

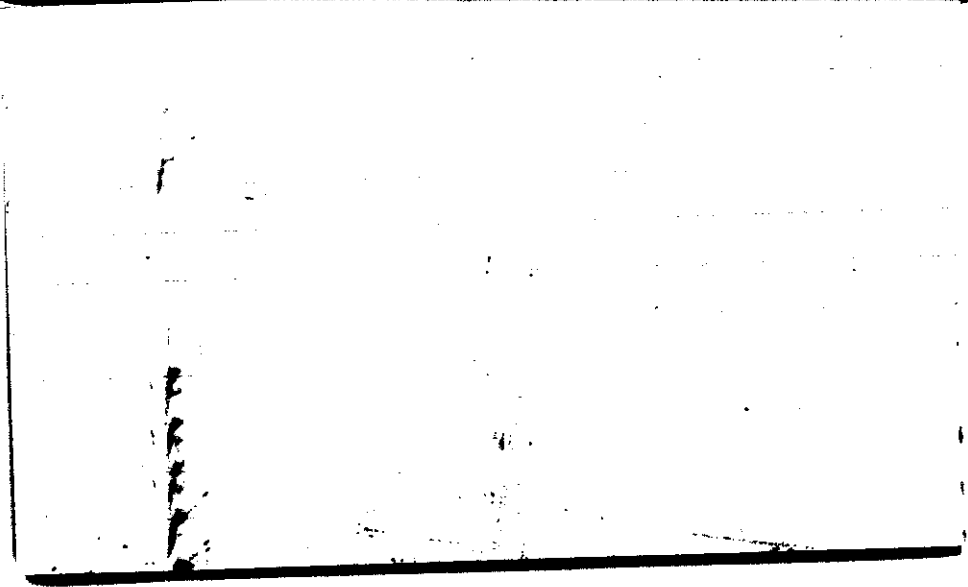
Algebra 15 (12)
-77 +0 77 -6.4 6.7

STATE COLLEGE, Pa. Date

MAR 9 1941

Time
1310

Max.	Wind F NW 2	Barom. t	General Obs.	
Min.	Vis. km. 1.5	p		
Dry 30.2	Clouds	p(red.)		
Wet				
R.H. 70		Morn.	Foren.	
Precip. 0.0 mm/ in.		Noon	Aftern.	
Snowfall/-Depth in/ in.		Eve.	Night	



STATE COLLEGE, Pa. Date **MAR 9 1944**

Time
19:00

Max.	Wind F W 4	Barom. t	General Obs.
Min.	Vis. km. 15	p	
Dry 32	Clouds 10	p (red.)	
Wet			
R.H. 45		Morn.	Foren.
Precip. mm/ in.		Noon	Aftern.
Snowfall/ -Depth in/ in.		Eve.	Night

STATE COLLEGE, Pa. Date **MAR 10 1941**

Time
7:00

Max. 33.0	Wind F SSW 2	Barom. t 71.0	General Obs. 7:00 E 11.5" \sqcup
Min. 17.6	Vis. km. 8	p 28.74	16:30 (a) / 17 (b) - 18 19" \odot
Dry 22.0	Clouds < 1	p (red.) 28.63	20 \odot - 22" \parallel
Wet	cu		
R.H. 70		Morn. clear to fair	Foren. clear to fair
Precip. 0.0 mm/T in.		Noon fair	Aftern. fair, high low clouds
Snowfall/-Depth in/ in.		Eve. " , high clouds	Night high overcast

STATE COLLEGE, Pa. Date

MAR 11 1949

Time
7:00

Max. 76.3	Wind F E 3	Barom. 28.74	General Obs. 7 ^h * 3-7:30 * 7:30-13:52
Min. 22.0	Vis. km. 1	P 28.70	7:00 ☐ 12" (240)
Dry 32.0	Clouds 10 *	0 (red.) 28.58	* ^o α 1:30-22:30
Wet	hst		
R.H. 94		Foren. overcast, snow	Foren. overcast, snow
Precip. 5.0 mm/0.2 in.		Noon " "	Aftern. " , to cloudy
Snowfall, -Depth in/ in.		Eve. cloudy to pty cloudy	Night " , snow

		4	0
		1	3
		5	4
		3	4
		2	4
		6	4
		0	0
		1	1
		8	8
		2	0
		9	3
		3	4
		1	0
		0	1
		3	3
		4	3
		1	2
		2	2
		1	2
		1	1
		4	4
		8	4

+34
 (47) = 42 + 76 = 118
 0 7 25

STATE COLLEGE, Pa. Date **MAR 11 1941**Time
4:300

Max.	Wind F SW 1	Barom. t	General Obs.	
Min.	Vis. km. 1	p		
Dry 35.6	Clouds 10 * 1	h (red.)		
Wet	hst			
R.H.		Morn.	Foren.	
Precip. 0.20 mm/ in.		Noon	Aftern.	
Snowfall/-Depth in/ in.		Eve.	Night	

Zapros		(24)	⁺² -22+24	46	+0.1	1.9
1	8					
2	-1					
-2	-2					
2	-2					
2						
-1						
-2						
1						
-1						
1						
-4						
1						
0						
-2						
3						
-4						
-1						
2						
0						

STATE COLLEGE, Pa. Date

MAR 12 1949

Time
7:04

Max. 38.3	Wind F NSW 4	Barom. t 27.5	General Obs. 7:00 ☒ 10.5 (news ⁿ) * ⁹⁻¹ 3:30-10:40
Min. 30.2	Vis. km. 2.5	P 28.67	*H 12:20-12:30
Dry 30.6	Clouds 10 *	p (red.) 28.56	*H 13:12
Wet	hst		* 14:40-15:30 ▽
R.H. 95		Foren. overcast snow	Foren. overcast snow
Precip. 6.3 mm / 0.25 in.		NOON cloudy to overcast	Aftern. snow flurries cloudy to overcast
Snowfall / Depth in / in.		Eve. cloudy	Night cloudy

STATE COLLEGE, Pa. Date **MAR 13 1941**Time
7:00

Max. 38.1	Wind F N 2	Barom. t 72.0	General Obs. 7:30 8 8 ^a W'
Min. 20.1	Vis. km. 40	P 29.00	
Dry 20.9	Clouds 5	p (red.) 28.89	
Wet	acu 30		
R.H. 83		Morn. pty cloudy to cloudy	Foren. cloudy
Precip. 0.2 mm / 0.01 in.		Noon cloudy to pty cloudy	Aftern. pty cloudy to fair
Snowfall / - Depth in / in.		Eve. fair to clear	Night clear

6
Kodanpanal (2) - 1 + 6 + 7 + 8.5 + 3.5
+ 5

STATE COLLEGE, Pa. Date **MAR 14 1941**

Time
7:00

Max. 36.0	Wind F W 3	Barom. t 67.0	General Obs. 7:00 ☒ 1.5 LI'
Min. 13.1	Vis. km. 15	P 28.98	
Dry 20.5	Clouds 0 0	o (red.) 28.88	
Wet			
R.H. 62		Foren. clear	Foren. clear
Precip. mm/ in.		Noon "	Aftern. "
Snowfall, - Depth in/ in.		Eve. "	Night "

STATE COLLEGE, Pa. Date **MAR 15 1923**

Time
7:03

Max. 40.8	Wind F W 2	Barom. t 72.0	General Obs. 10 ¹⁵ ☉ 10 ⁴⁵ ☉ 11 ⁰⁰ ☉ -10 ¹⁵
Min. 20.5	Vis. km. 15	P 28.92	☒ 7.0"
Dry 27.0	Clouds 2	o (red.) 28.81	
Wet	ci		
R.H. 47		Morn. <i>fair</i>	Foren. <i>fair</i>
Precip. mm/ in.		Noon "	Aftern. <i>partly cloudy to cloudy</i>
Snowfall/Depth in/ in.		Eve <i>cloudy to overcast</i>	Night <i>overcast</i>

STATE COLLEGE, Pa. Date **MAR 16 1941**

Time
7:03

Max. 44.6	Wind F SW 3	Barom. t 72.1	General Obs. 7:03 ☒ 5"
Min. 27.0	Vis. km. 11	P. 28.65	☉ 23:10-23:20 ● 23:30-23:35
Dry 36.2	Clouds 10	σ (red.) 28.55	
Wet	st sc		
R.H. 88		Foren. Overcast	Foren. overcast
Precip. mm/ in.		Noon "	Aftern. "
Snowfall, Depth in/ in.		Eve. " to cloudy	Night cloudy

1
3
1
2
7
1
2
0
2
0
-1
3
0

Krone (14) - 4 + 19 23
+15
+1.6

STATE COLLEGE, Pa. Date

MAR 10 1941

Time

18.55

Max.	Wind F SW 4	Barom. t	General Obs.	
Min.	Vis. km. 8	p		
Dry 39.2	Clouds 79	p(red.)		
Wet	Sc			
R.H. 82		Morn.	Foren.	
Precip. mm/ in.		Noon	Aftern.	
Snowfall/-Depth in/ in.		Eve.	Night	

Zi Kawei (27) - 73 + 23		96	-1.9	3.6
0	3			
3	-8			
-7	-4			
1	-4			
-3	-3			
-6	-6			
-1	4			
-5				
2				
-7				
-6				
-3				
-4				
-1				
1				
-2				
-3				
0				
8				

STATE COLLEGE, Pa. Date

MAR 17 1909


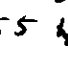
Time

7:05

Max. 40.0	Wind F WNW 6	Barom. t 65.2	General Obs. ☒ 0.1" + 4.1" 4:15 W W 45 mph 4.7" *H 12:15 *H 13:01-13:3	
Min. 10.9	Vis. km. 15	P 28.62	Δ * 1:20-0:25 * 1:53-2:05	
Dry 11.3	Clouds 3	b (red.) 28.53	14:00 W WNW 44 mph	
Wet	ft. cv			
R.H. 67		Morn. partly cloudy	Foren. cloudy	
Precip. 0.2 mm / 0.01 in.		Noon cloudy, snow flurries	Aftern. "	
Snowfall / - Depth in / in.		Eve. " -	Night "	

STATE COLLEGE, Pa. Date **MAR 18 1941**

Time
0700

Max. 14.0	Wind F WSW 6	Barom. t 60.0	General Obs. 0703 ☒ 3.9" 11:20-11:35 *
Min. 7.2	Vis. km. 15	P 28.79	1430  45 mph
Dry 7.7	Clouds > 9	b (red.) 28.71	1855  55 mph for 30 sec
Wet	sc fsc		
R.H. 65		Morn. cloudy, overcast	Foren. cloudy, snowflakes
Precip. T mm / T in.		Noon "	Aftern. "
Snowfall / - Depth in / in.		Eve. "	Night " to partly cloudy

STATE COLLEGE, Pa. Date MAR 18 1941

Time
1900

Max. 20.1	Wind F WNW 8	Barom. t	General Obs.	
Min. 6.8	Vis. km. 15	p		
Dry 18.3	Clouds 6	p (red.)		
Wet	fsc > 5 cift < 1			
R.H. 56		Morn.	Foren.	
Precip. T. mm/	in.	Noon	Aftern.	
Snowfall/-Depth in/	in.	Eve.	Night	

Max. 20.1	Wind F NNW 7	Barom. t 62.0	General Obs. 0700 ☒ 3.1"
Min. 6.8	Vis. m. 500	P 28.93	
Dry 16.5	Clouds 4	(red.) 28.84	
Wet	fsc 2 sc 2		
R.H. 62		Foren. partly cloudy to cloudy	Foren. cloudy to partly cloudy
Precip. T in / T in		Noon " "	Aftern. partly cloudy to fair (ice from)
Snowfall / -Depth in / in		Even. cloudless	Night fair to partly cloudy

Handwritten notes on lined paper, including a list of numbers and a calculation.

5
1
3
0
9
4
2
6
1
K
-17
-29 + 12
-15
3.7

STATE COLLEGE, Pa. Date

MAR 20 1941

Time
6:58

Max. 30.6	Wind F W 2	Barom. t 71	General Obs. <input checked="" type="checkbox"/> 7:00 3.0"
Min. 16.1	Vis. km. 20	p 28.88	
Dry 26.6	Clouds 8	b (red.) 28.77	
Wet	ac as asc		
R.H. 50		Morn. cloudy	Foren. cloudy to overcast
Precip. mm/ in.		Noon cloudy to pty cloudy	Aftern. pty cloudy to fair
Snowfall, - Depth in/ in.		Eve. fair	Night fair

STATE COLLEGE, Pa. Date

MAR 21 1941

Time

7:00

Max. 46.6	Wind F N 2	Barom. t 73.0	General Obs. 7:00 ☒ x"
Min. 25.2	Vis. km. 25	P 28.96	
Dry 29.0	Clouds 9	(red.) 28.84	
Wet	ac ase		
R.H. 41		Foren. partly cloudy	Foren. fair
Precip. mm/ in.		Noon fair to clear	Aftern. clear
Snowfall/- in/ in.	Depth in/ in.	Eve. clear	Night "

STATE COLLEGE, Pa. Date

MAR 22 1941

Time
7:02

Max. 43.9	Wind F NW 2	Barom. 71.0	General Obs. 7:00 ☒ T L'
Min. 24.0	Vis. km. 20	P 29.05	
Dry 26.2	Clouds 0 0	h (red.) 28.99	
Wet			
R.H. 84		Mo. clear	Foren. clear
Precip. mm/ in.		Noon "	Aftern. "
Snowfall, - Depth in/ in.		Eve. "	Night "

STATE COLLEGE, Pa. Date **MAR 23 1941**

Time
7:01

Max. 48.8	Wind F NE 2	Barom. 76.0	General Obs. 7:00 ☐ T L ²
Min. 24.8	Vis. km. 20	29.08	9:30 ☉ / 11 ^h ☉ /
Dry 26.9	Clouds 2	(red.) 28.96	12 ^h ☉ - 16 ³⁰
Wet	ci ca.		
R.H. 93		Foren. fair 7/10 ci, ca	Foren. fair 3/10 - 4/10 ci, ca.
Precip. mm/ in.		Noon " 3/10 - 7/10 (ci, ca)	Aftern. " 5/10 - 7/10 ca " to pthly cloudy
Snowfall/-Depth in/ in.		Eve. cloudy to overcast	Night overcast

STATE COLLEGE, Pa. Date

MAR 24 1941

Time
7:05

Max. 52.0	Wind F S 1	Barom. t 79	General Obs. 7:00 <input checked="" type="checkbox"/> T
Min. 26.6	Vis. km. 5	28.82	☉° 4:30-9:10
Dry 39.2	Clouds 10	o (red.) 28.69	☉° 19:40-21:30
Wet	nst		
R.H. 87		Morn. overcast, rain	Foren. overcast
Precip. 0.4 mm/0.02 in.		Noon "	Aftern. cloudy
Snowfall, - Depth in/ in.		Eve. "	Night overcast, rain (later cloudy after 10 PM)

STATE COLLEGE, Pa. Date

MAR 25 1941

Time
7:02

Max. 51.7	Wind F WNW 4	Barom. t 72.0	General Obs. 7 ⁰⁰ ☑ T ☉ 0:30-3
Min. 31.5	Vis. km. 25	P 28.73	*fl 6:45-6:55
Dry 32.2	Clouds > 9	p (red.) 28.62	*fl 8:10, *fl 9:50
Wet	SC AS		*fl 11:50 *fl 13:30 *fl 14:30
R.H. 71		MOON cloudy *flurries	MOON cloudy *flurries
Precip. 1.3 mm / 0.05 in.		Noon " "	Aftern. " "
Snowfall / - Depth in / in.		Eve. " "	Night " "

Handwritten notes on lined paper, including the number 4, a large K, and mathematical expressions: $-6 + 8 + 2$ and $+0.5 \times 3.5$.

STATE COLLEGE, Pa. Date **MAR 26 1944**Time
7:02

Max. 36.5	Wind F W 4	Barom. t 70.2	General Obs. 7:00 <input checked="" type="checkbox"/> T
Min. 26.1	Vis. km. 2.5	p 28.80	
Dry 27.5	Clouds 9	p (red.) 28.69	
Wet	pr. st sc ac lent ci		
R.H. 76		Morn. cloudy	Foren. cloudy to ptly cloudy
Precip. 0.0 mm/ T in		Noon ptly cloudy	Aftern. ptly cloudy
Snowfall/-Depth in/ in		Eve. . n " to cloudy	Night cloudy to fair

STATE COLLEGE, Pa. Date **MAR 27 1941**

Time
7:02

Max. 43.4	Wind F WSW 3	Barom. t 73.0	General Obs. 7:00 ☒ T L ²
Min. 27.4	Vis. kn. 4 ∞	P 28.78	
Dry 29.5	Clouds ci ³	(red.) 28.66	
Wet			
R.H. 90		Foren. <i>fair</i>	Foren. <i>fair to pthy cloudy</i>
Precip. mm/ in		Foren. <i>pty cloudy</i>	Foren. <i>pty cloudy</i>
Snowfall, -Depth in/ in		Foren. " " ^{as met} <i>to fair</i>	Foren. " <i>fair</i>

STATE COLLEGE, Pa. Date **MAR 28 1941**Time
7:02

Max. 49.0	Wind F N 2	Barom. t 74.0	General Obs. 7:00 L ^o
Min. 29.5	Vis. km. 12	p 28.68	
Dry 30.7	Clouds > 9	b (red.) 28.56	
Wet	sc		
R.H. 80		Foren. cloudy	Foren. overcast with breeze to cloudy
Precip. mm/ in.		Noon "	Aftern. "
Snowfall/-Depth in/ in.		Even. cloudy	Night ptly cloudy to fair

0
1
1
2
3
4
5
6
7
8
9
10
11
12
13
14
15
16
17
18
19
20
21
22
23
24
25
26
27
28
29
30
31
32
33
34
35
36
37
38
39
40
41
42
43
44
45
46
47
48
49
50
51
52
53
54
55
56
57
58
59
60
61
62
63
64
65
66
67
68
69
70
71
72
73
74
75
76
77
78
79
80
81
82
83
84
85
86
87
88
89
90
91
92
93
94
95
96
97
98
99
100

STATE COLLEGE, Pa. Date **MAR 29 1941**

Time
6:58

Max. 47.3	Wind F NW 4	Barom. 27.2	General Obs. * 7:55 - 8:07
Min. 29.7	Vis. km. 40	28.61	* H 11:00 * H 15:10
Dry 31.0	Clouds 9	28.49	1620 * ⁻¹ *° 17 ⁰⁰ -19 ⁰⁰
Wet	AC		12 ¹⁰ -12 ²⁰ . 0 is net
R.H. 72	Foren. cloudy	Foren. cloudy	
Precip. mm/ in.	Noon "	Aftern. " snow flurries	
Snowfall/-Depth in/ in.	Even. " 1/4th cloudy	Night " 1/4th cloudy	

Handwritten notes on lined paper, including a list of numbers and some illegible text.

1
6
5
0
15

3.0

12

STATE COLLEGE, Pa. Date **MAR 30 1941**Time
6:58

Max. 40.0	Wind F W 3	Barom. t 71.8	General Obs. 7:30 <input checked="" type="checkbox"/> 0.2"
Min. 17.1	Vis. km. 20	P 28.82	
Dry 17.2	Clouds 8 sc	p (red.) 28.71	
Wet			
R.H. 70		Morn. cloudy to pty cloudy	Foren. pty cloudy
Precip. 0.4 mm / 0.02 in.		Noon pty cloudy to fair	Aftern. fair
Snowfall / -Depth in / in.		Eve. fair	Night clear

Handwritten notes on lined paper, including the following text:

$\frac{1}{2}$
the kernel (1) -1 +0 1
-1
-1.0 1.0

STATE COLLEGE, Pa. Date **MAR 31 1941**

Time
7:00

Max. 37.7	Wind F W 2	Barom. 73.0	General Obs. 7:00 W ^o
Min. 16.9	Vis. km. 14	p 28.80	7 8:45-9 ⁰⁰
Dry 29.1	Clouds 9	p (red.) 28.68	☉ 20:25-21:40
Wet	ac sc		
R.H. 67		Foren. cloudy	Foren. cloudy to overcast
Precip. mm/ in.		Noon "	Aftern. "
Snowfall, -Depth in/ in.		Eve. overcast	Night overcast, light rain

