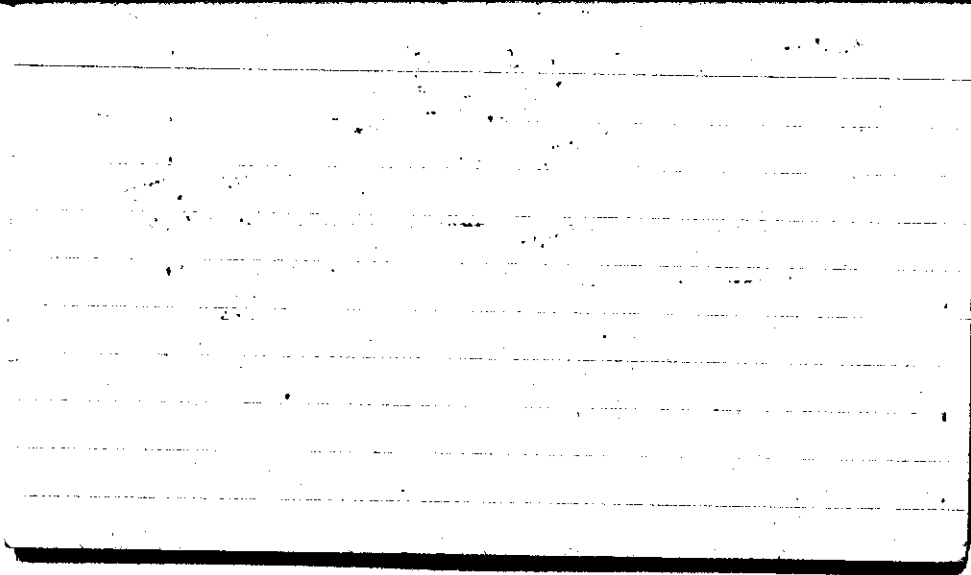


STATE COLLEGE, Pa. Date **AUG 1 - 1942**Time
0700

Max. 83	Wind F SW-2	Barom. t 80	General Obs. = \overline{a}
Min. 66	Vis. km. 7	p 28.91	1540 - 1630 ☉
Dry 70	Clouds 9	p(red.) 28.78	
Wet -	sc		
R.H. 95		Morn. chy - fog - dew	Foren. chy
Precip. 5.0 mm / 0.20 in.		Noon chy to pty chy	Aftern. chy, in morn in dem, chy, chy
Snowfall / -Depth - in / - in.		Eve. pty chy	Night pty chy to chy

MJR 0710



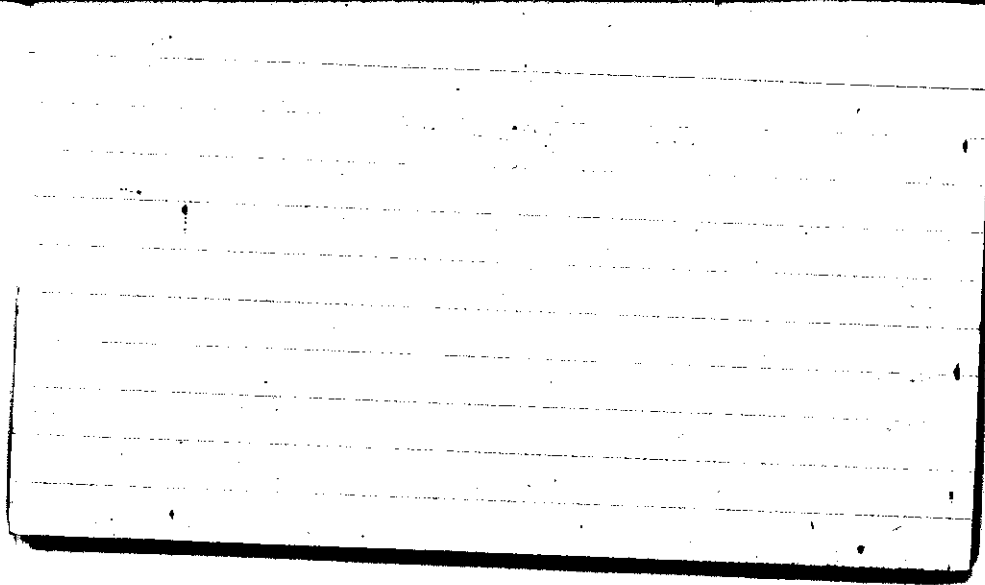
STATE COLLEGE, Pa. Date

AUG - 2 1942

Time
0700

87	Wind P W 2	Barom. ██████	General Obs. <i>no</i>
Min. 69	Vis. km. 8	28.85	• 0 █████ 655 0710 T ₂ • 0720 - 0830
Dry 72	Clouds 10	p (red.) 28.71	1630-1730 i ₂ 2100 <i>Σ</i> i 5
Wet	As, Ac Cb, Sc		
R.H. 98		Morn. cldy to ovc. rain Thunderst.	Foren. cldy
Precip. T mm / T in.		Noon cldy	Aftern. cldy to pty cldy
Snowfall / -Depth in / in.		Eve. pty cldy	Night pty cldy to cldy

W 0720



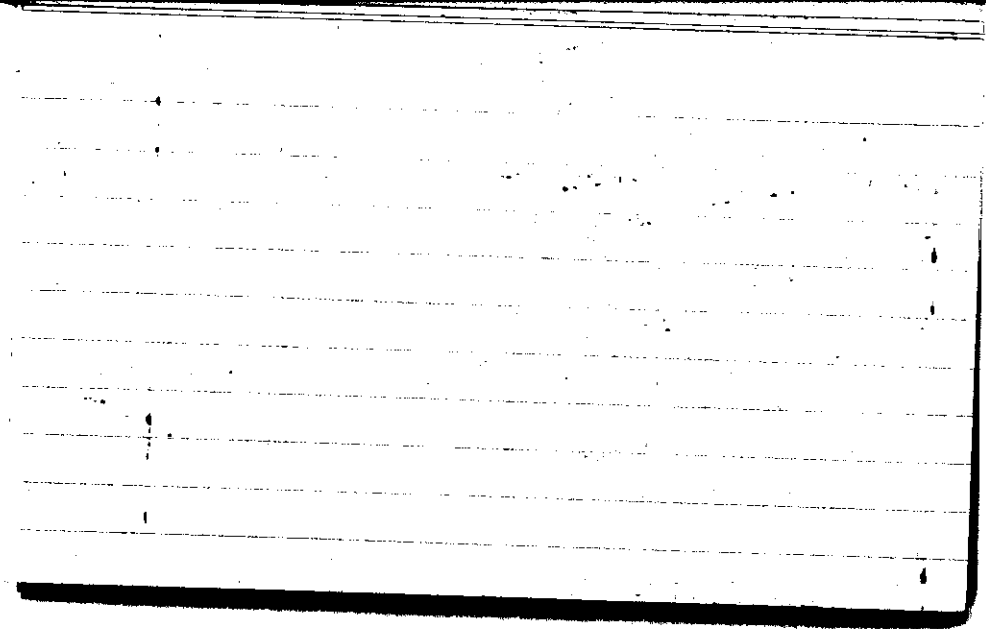
STATE COLLEGE, Pa. Date

AUG -3 1942

Time
0700

Max.	Wind F	Barom.	General Obs.
84	NW-2	t 82	1200 - 1315 ☉ as met a fit a few cirrus in am.
Min.	Vis. km.	P	
67	22	28.84	
Dry	Clouds	p(red.)	
71	8	28.70	
Wet	Ac, Cu, Fc		
R.H.		Morn. cloudy	Foren. pthly cldy
90		NOON pthly cldy	Aftern. cldy to pthly cldy
Precip.	5.8 mm / 0.23 in.	NOON	Aftern.
Snowfall/-Depth	in/ in	Night	fair

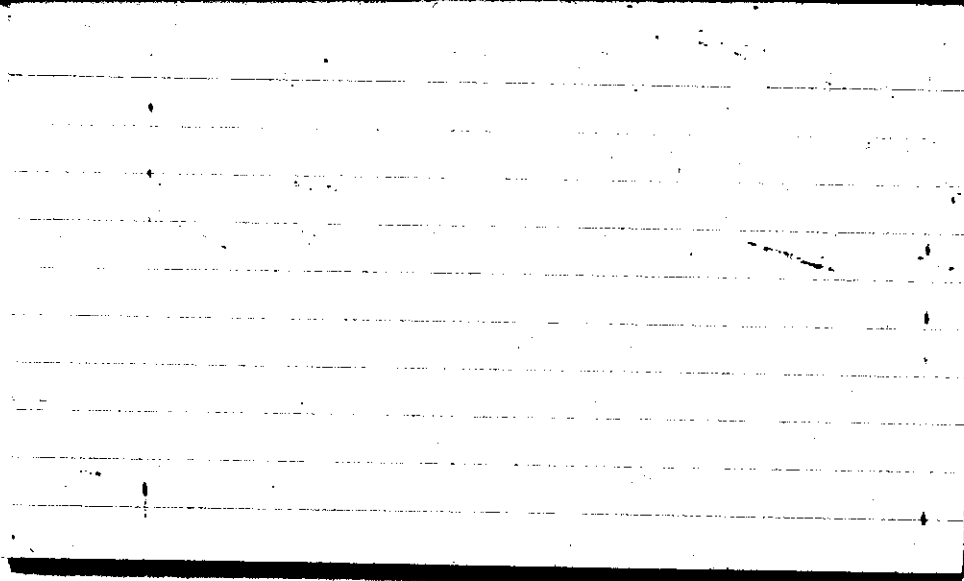
MIR 0705
MIR 0700



STATE COLLEGE, Pa. Date AUG -7 1942

Time
0700

Max. 77	Wind P Calm	Barom. t 75	General Obs. $\overline{\text{---}}$ $\overline{\text{---}}$ $\overline{\text{---}}$ 1320 (°) - 1400 101° 2215-2400
Min. 55	Vis. km. 30	p 29.00	
Dry 58	Clouds 10	p(red.) 28.88	
Wet	Ac		
R.H. 93		Morn. OVC	Foren. clgy
Precip. — mm / — in.		Noon ca. wet. a ac dry	Aftern. pthly to clgy
Snowfall/-Depth — in / — in.		Exp. cloudy	Night intmt rain ov
MJR 0112			

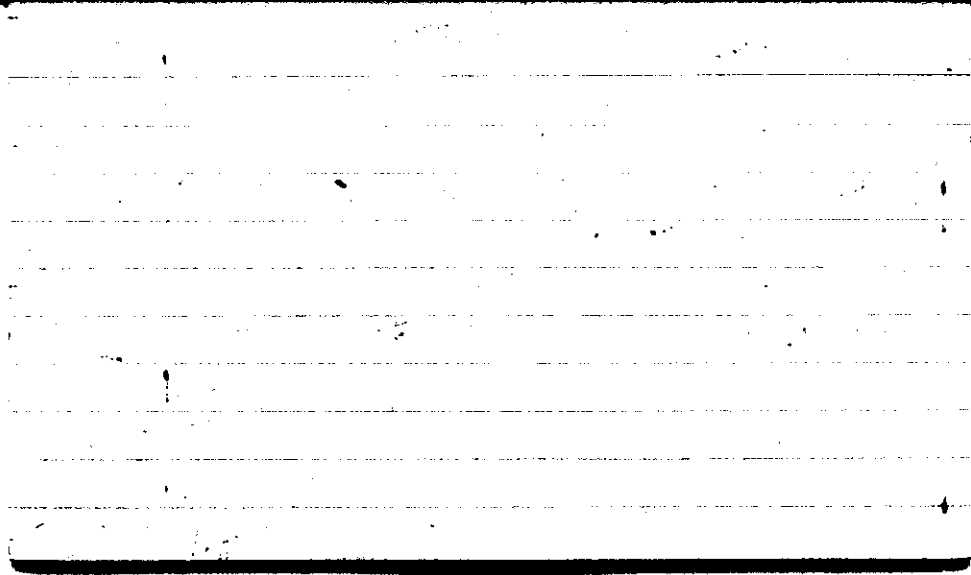


STATE COLLEGE, Pa. Date AUG -9 1942

Time
0700

Max. 64	Wind P Calm	Barom. t 72	General Obs. = <i>a</i>
Min. 60	Vis. km. 4	p 28.77	21 ^h - 23 ^h <i>z</i> i S.
Dry 61	Clouds 10	p(red.) 28.66	
Wet -	st		
R.H. 97		Morn. ovc - lgt fog	Foren. ovc
Precip. 11.3 mm / 0.44 in.		Noon ovc	Aftern. ovc - cldy
Snowfall/-Depth - in / - in.		Eve. ovc	Night ovc

AJR 0740

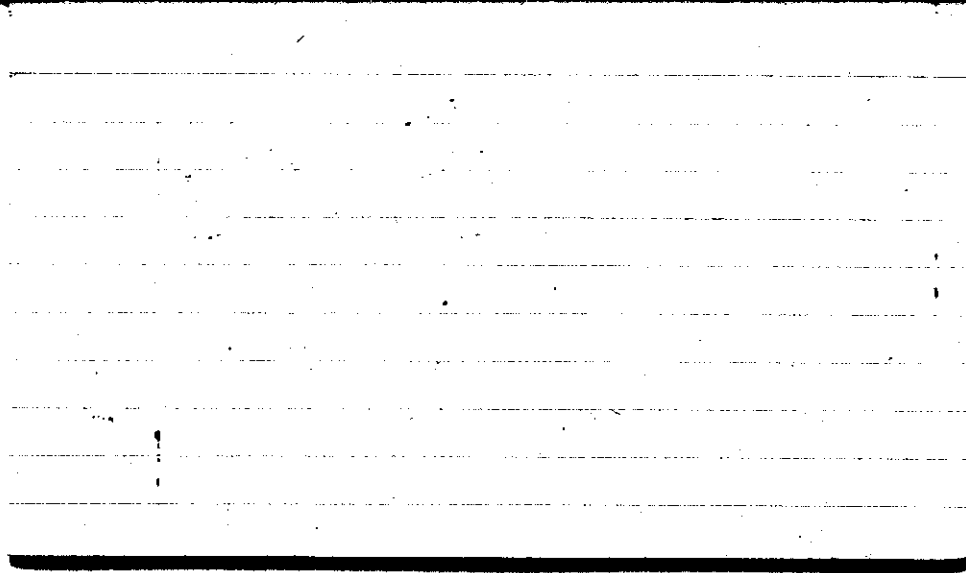


STATE COLLEGE, Pa. Date **AUG 10 1942**

Time
0700

Max. 72	Wind P SW-3	Barom. t 73	General Obs. = a'	
Min. 60	Vis. km. 9	p 28.71		
Dry 66	Clouds 2	p(red.) 28.59		
Wet -	cc, ci, Alcc, Ac			
R.H. 95		Morn. fair, fog	Foren. pty day to day	
Precip. - mm / - in.		Noon cloudy clearing	Aftern. cloudy to pty day	
Snowfall/-Depth - in / - in.		Eve. pty day	Night fair partly	

MJR 0710



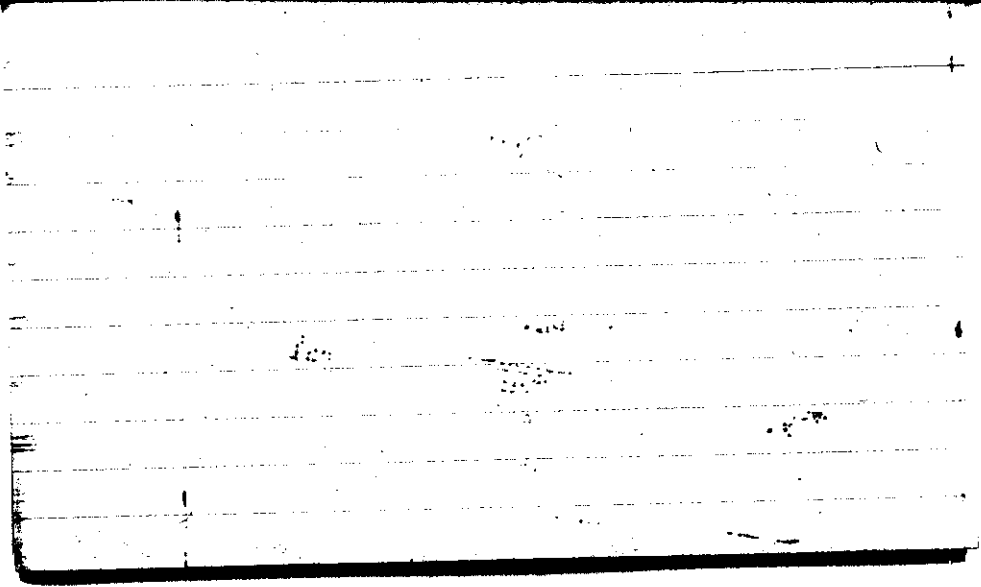
STATE COLLEGE, Pa. Date

AUG 11 1942

Time
0700

Max. 79	Wind F calm	Barom. t 76	General Obs. = σ^2	
Min. 61	Vis. km. 5	p 2882	Wind recorder changed to respond to 20 contacts (instead of 30)	
Dry 65	Clouds 1	p (red.) 2870		
Wet	ci fe ci fe ce			
R.H. 90		Morn. fair	Foren. pty clg	
Precip. / mm / \ in.		Noon pty clg to clg	Aftern. pty clg	
Snowfall/-Depth in/ in.		Eve. pty clg	Night pty clg	

H



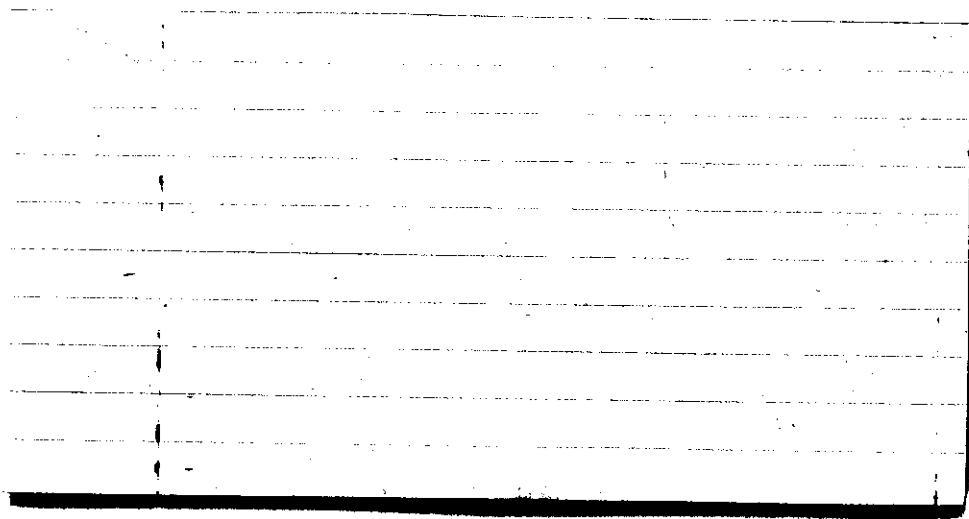
STATE COLLEGE, Pa. Date

AUG 12 1942

Time
0700

Max. 85	Wind F N3	Barom. t 78	General Obs. = a
Min. 62	Vis. km. 3 mi.	P 28.93	0915 :a: - 10:00
Dry 64	Clouds Ac .9	p(red.) 28.90	1510 ° - 1805
Wet	Cs		1730 - 1740 °
R.H. 96%		Morn. cldy. f 78	Foren. pty cldy f 78
Precip. T mm / T in.		Noon cldy	Aftern. cldy rain
Snowfall/-Depth in / in.		Eve. over rain	Night over rain

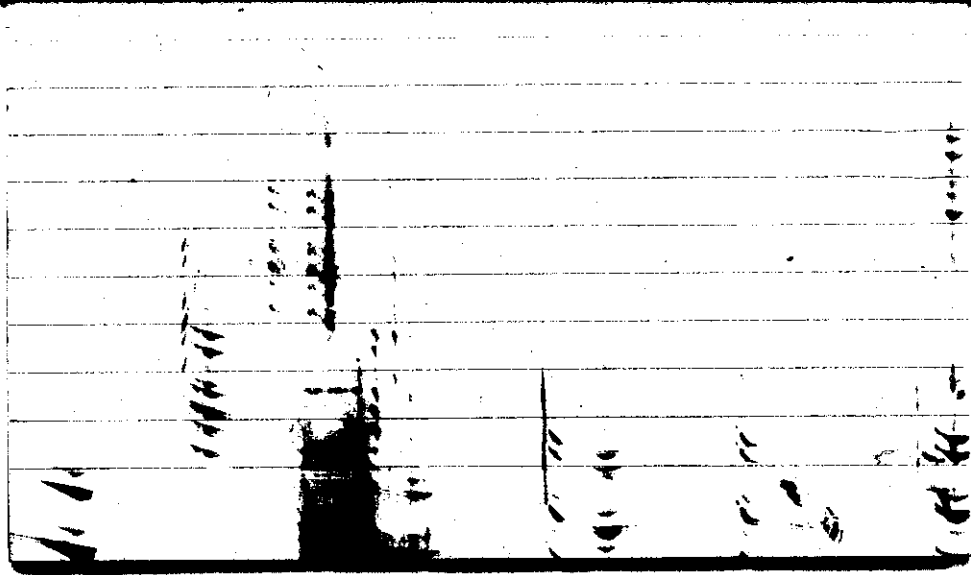
A.I.S.



STATE COLLEGE, Pa. Date **AUG 13 1942**

Time
0700

Max. 73	Wind F NNE 1	Barom. t 77	General Obs. 9 =	1800 i o ; - 1820
Min. 64	Vis, km. 1 1/2	28.96	0040-0110 ●	
Dry 66	Clouds Ns 10	p (red.) 28.83	0145-0250 ●	
Wet			0335-0355 ●	
			0455-0850 ●	
H.H. 97%		Morn. Overst rain drizzle	Foren. over	
Precip. 26 mm / .10 in.		Noon over	Aftern. clgy	
Snowfall/-Depth in/ in.		Eve. clgy	Night clgy	
A.M. 0750			0750	



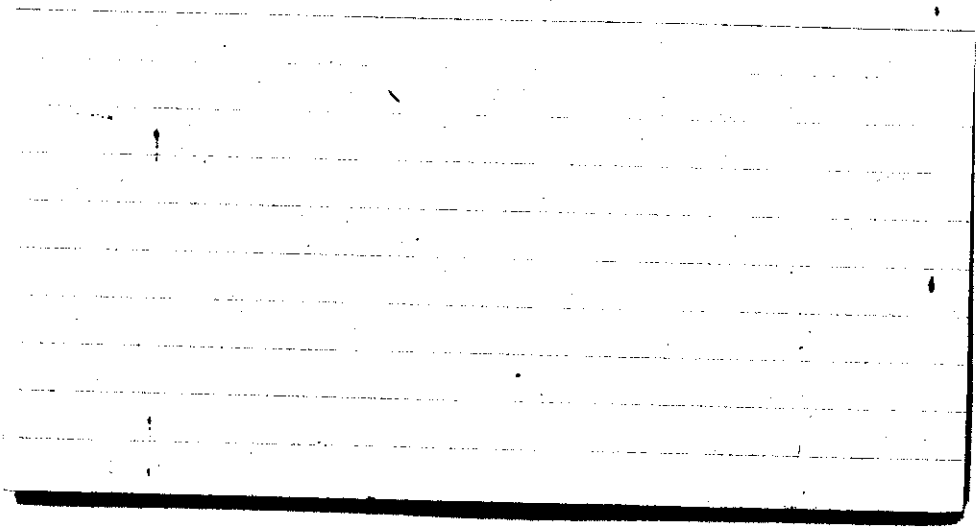
STATE COLLEGE, Pa. Date AUG 14, 1942

Time
0700

Max.	Wind F	Barom.	General Obs.
76	Calm	t 79	≡
Min.	Vls. km.	p	
66	.5	28.78	
Dry	Clouds	p(red.)	
68	X	28.84	
Wet			
R.H.		Morn. Overcast, Foggy	Foren. cldy
95			
Precip.		Noon pty cldy	Aftern. pty cldy
60 mm/.04 in.			
Snowfall-Depth		Eve. pty cldy to	Night
1 in/1 in.		clear	clear, foggy

A.B.

0743

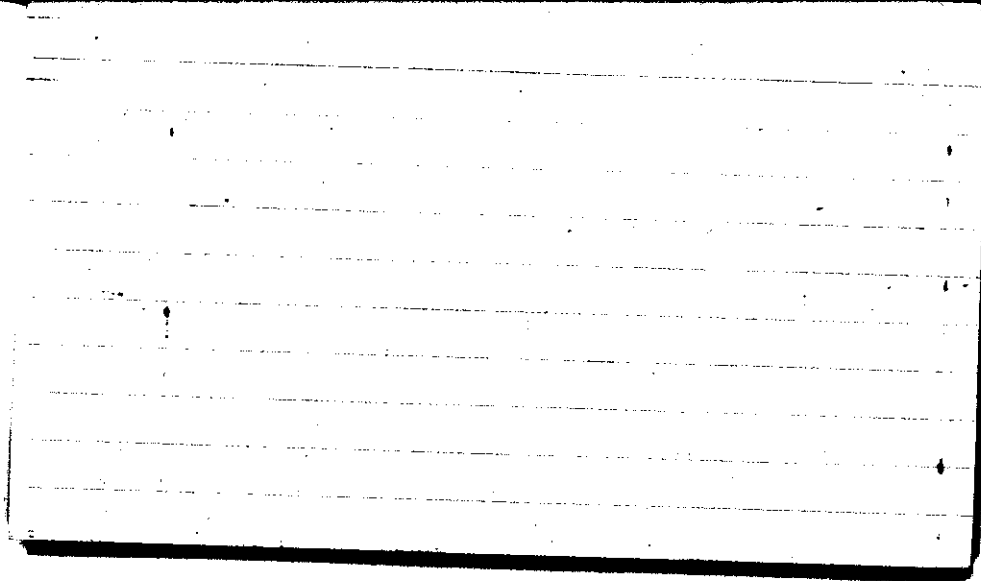


STATE COLLEGE, Pa. Date

AUG 15 1942

Time
0700

Max. 86	Wind F Calm	Barom. t 79	General Obs. ≡ 0° } 2030 ; M.
Min. 63	Vis. km. .3	p 28.95	
Dry 66	Clouds X	p(red.) 28.82	
Wet			
R.H. 96		Morn. Dense Fog	Foren. pty dry to fair
Precip. / mm / in.		Noon clear to fair	Aftern. pty dry to dry
Snowfall/-Depth / in / in.		Eve. cldy. cl, cipit. cc, cr neb.	Night pty cldy to cldy
	AM	0705	(15.45)

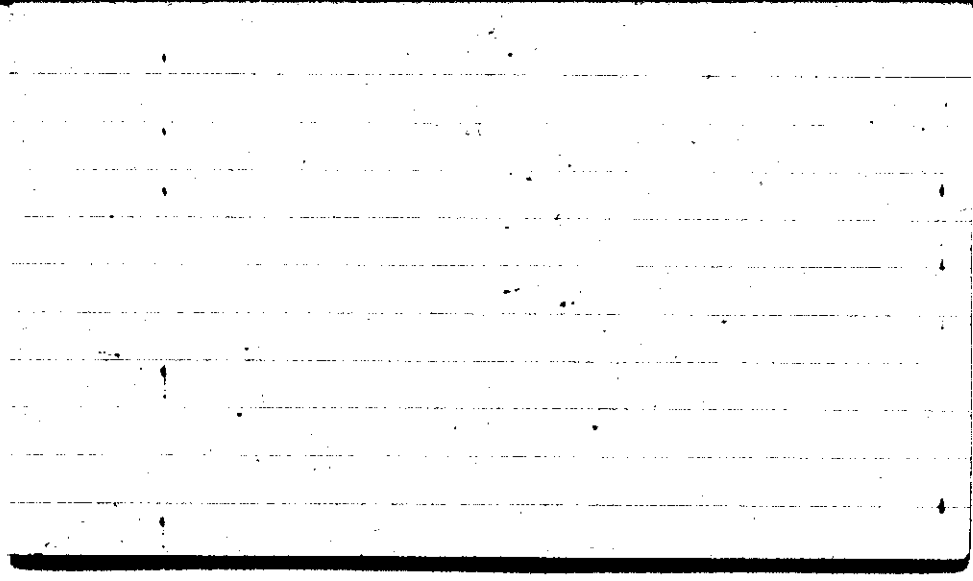


STATE COLLEGE, Pa. Date **AUG 16 1942**

Time
0700

Max. 90	Wind F calm	Barom. t 77	General Obs. ☉ ☽	1650 ~
Min. 65	Vis. km. 10	P 28.87	☽ 1342 - 1500	1800 0.45" cldy, 76°
Dry 72	Clouds 1	p(red.) 28.74	☽ 1342 - 1420	2140 ☉ -
Wet	st. cife		☽ 1635 - 1735	2155 ☽
			☽ 5:2030	2330 - 2340 ☽
R.H. 91		Morn. fair	Foren. ptly cldy A.	
Precip. mm/ in.		Noon fair	Aftern. B ☽	
		☽ cife	cldy	
Snowfall/ -Depth in/ in.		Eve. ptly cldy	Night cldy raindrops	

AM

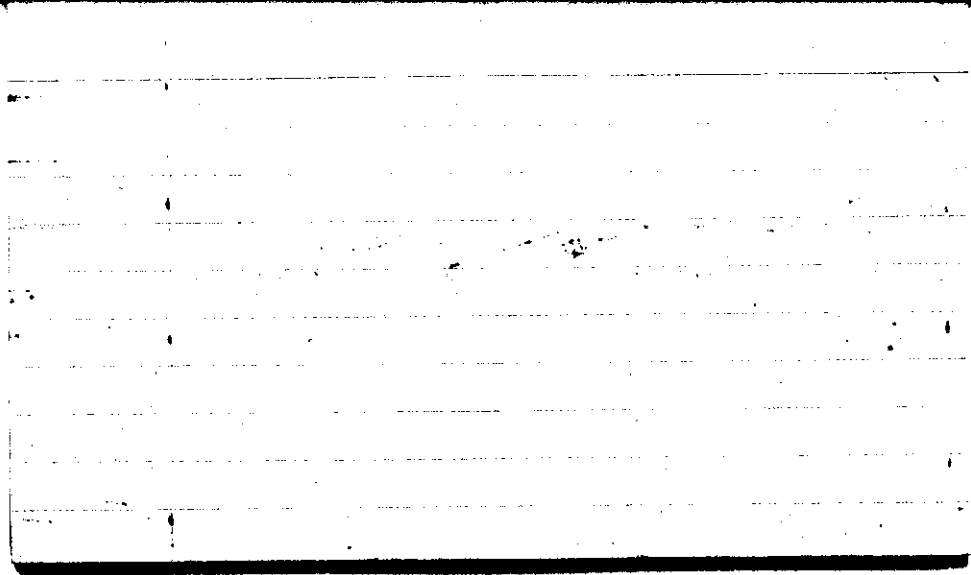


STATE COLLEGE, Pa. Date

AUG 17 1942

Time
0700

Max. 89	Wind \neq Calm	Barom. t 82	General Obs. $\infty \Delta$
Min. 66	Vis. km. 10	p 28.95	0335-0340 ° ° 1005 rain drops
Dry 68	Clouds Ac=9	p(red.) 28.81	1035-1300 ° 1330-1345 ° 1400-1435 °
Wet			
R.H. 96		Morn. pty cldy to cldy	Foren. pty cldy to cldy
Precip. 11.6 mm / .45 in.		Noon cldy. Rain	Aftern. pty cldy to cldy Rain
Snowfall/-Depth / in / in.		Eve. pty cloudy cift. as seen. as follows.	Night pty cldy. = 2260
A.M. A.B.		9:35	



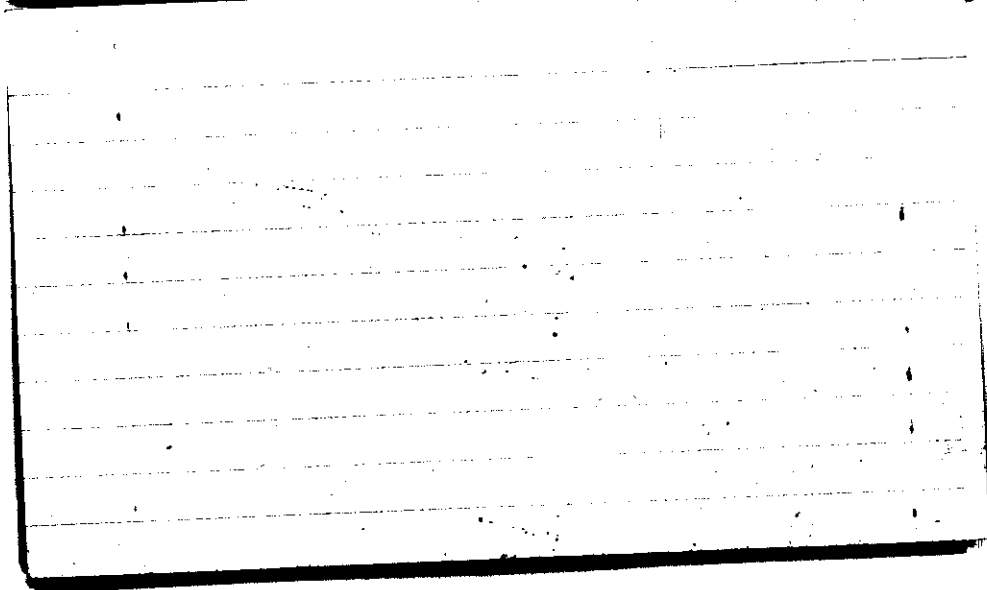
STATE COLLEGE, Pa. Date

AUG 18 1942

Time

0700

Max. 74	Wind F Calm	Barom. t 74	General Obs. ≡ ² 9 0 1100 1215
Min. 56	Vis. km. 0.2	p 28.99	
Dry 58	Clouds x	p (red.) 28.87	
Wet			
R.H. 96		Morn. = ² 5	Foren. cldy C. s. l. C. C. C. S. l. C.
Precip. 4.2 mm / .17 in.		Noon cldy	Aftern. pty. cldy → Fair
Snowfall / -Depth — in / — in.		Eve. Fair	Night Fair → pty. cldy
AB AM		0727	



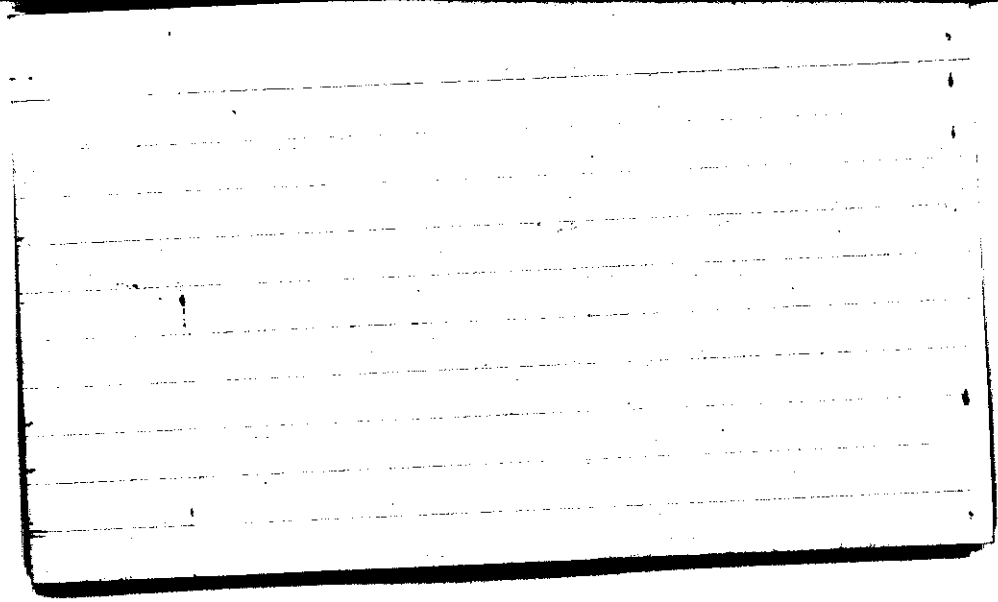
STATE COLLEGE, Pa. Date

AUG 19 1942

Time

0700

Max. 78	Wind P Calm	Barom. t 78	General Obs. = α^2	
Min. 53	Vis. km. 2	p 29.01		
Dry 57	Clouds X	p(red.) 28.88		
Wet				
R.H. 92		Morn. = fog	Foren. fair	
Precip. T mm / T in.		Noon fair	Aftern. fair	
Snowfall / -Depth (in / in.		Eve. fair	Night	
A.M.				0730



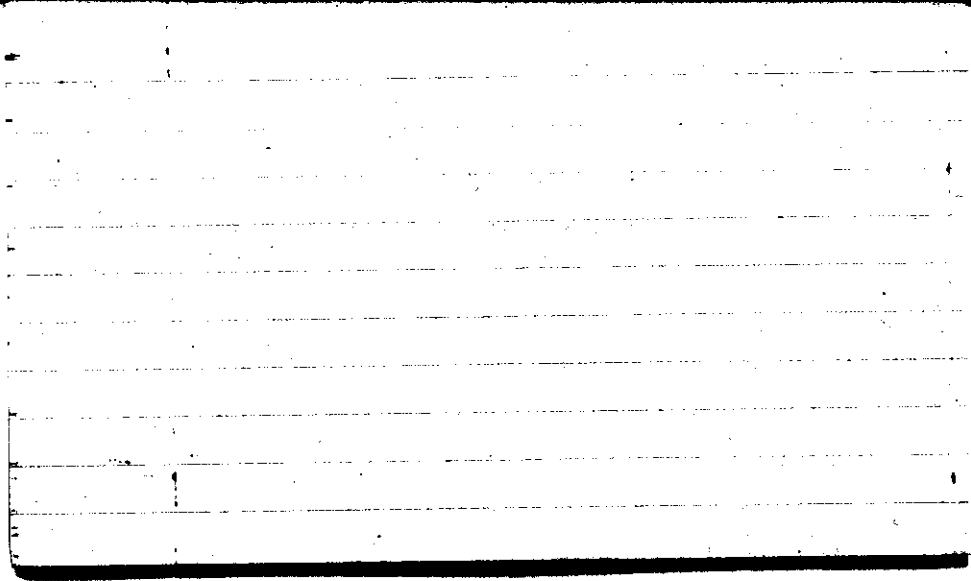
STATE COLLEGE, Pa. Date

AUG 20 1942

Time

0700

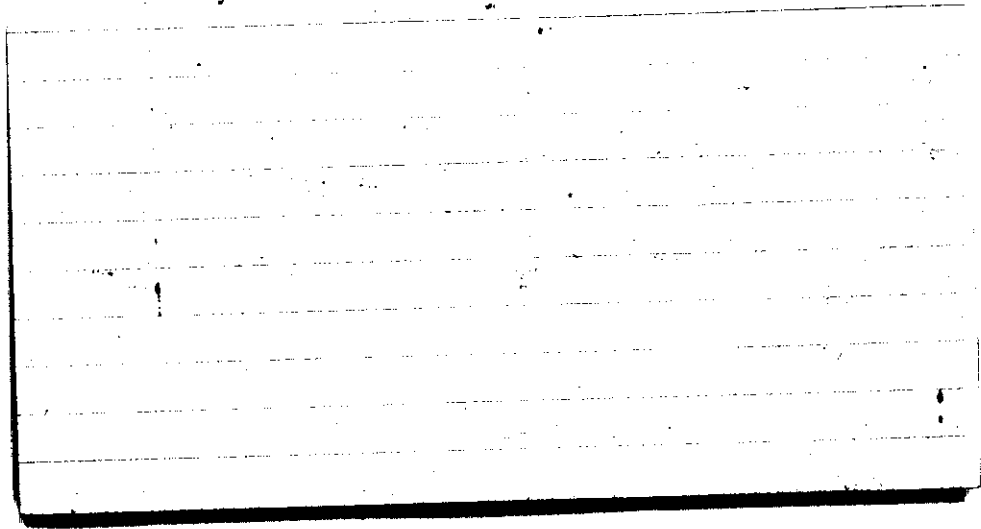
Max. 82	Wind F NE 1	Barom. t 74	General Obs. 0 =
Min. 56	Vis. km. 6	p 28.94	1715 ☉ as mb. ci from
Dry 62	Clouds 0	p(red.) 28.82	1740
Wet	x		
R.H. 94		Morn. clear B44	Foren. clear to fair
Precip. mm/ in.		Noon fair	Aftern. fair to pthly cl
Snowfall/-Depth in/ in.		Eve. pthly dry Cs	Night dry



STATE COLLEGE, Pa. Date **AUG 21 1942**

Time 0700

Max. 85	Wind F SW1	Barom. t 80	General Obs. 0800 - 0900 =
Min. 62	Vis. km. 4	p 28.84	R _v 1807 °
Dry 68	Clouds ST, As 9	p(red.) 28.71	1725-1805 ••-1
Wet	ci 2m ci fne		1810 - 1830 ••
R.H. 94		Morn. Pth. cldy → cldy	Foren. cldy
Precip. — mm / — in.		Noon cldy	Aftern. cldy
Snowfall / -Depth — in / — in.		Eve. cldy Thunderstorm	Night cldy light rain rain
AM		0650	



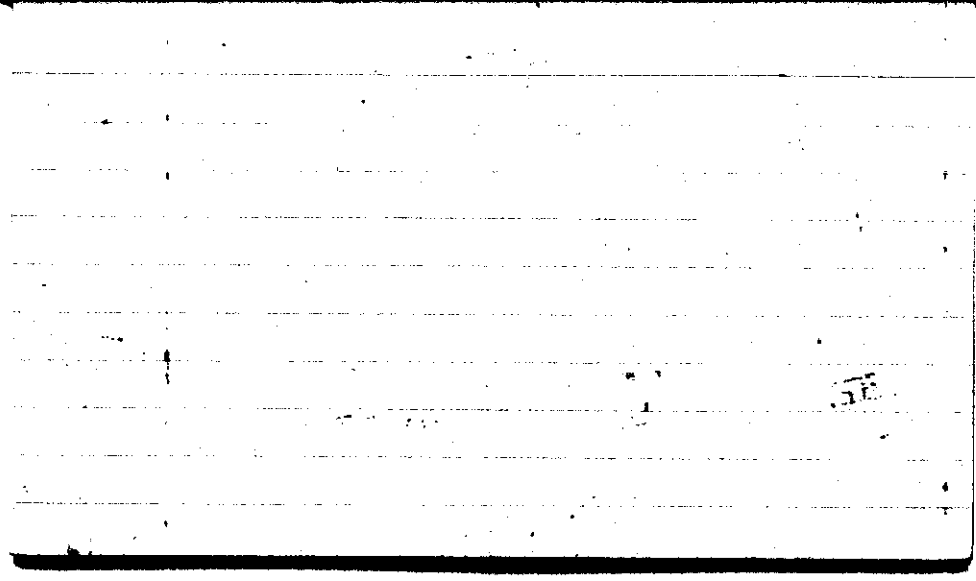
STATE COLLEGE, Pa. Date

AUG 22 1942

Time
0700

Max. 85	Wind F Calm	Barom. t 80	General Obs. =	10: 1400
Min. 66.	Vis. km. 8	p 28.93	0630 - K	Cs, Cpil, Cunc
Dry 67	Clouds Cu, Sc, St,	p(red.) 28.8.0	0641 - ∇ - 0700	Ci Tol, Cc
Wet	As, Fs, Cb		0813 - ∇ - 0845	
R.H. 97	9		1258 - ∇ - 1305	1720 \circ° - 1915
			1915 - ∇ - 2015	
			2040 - ∇ - 2135	
			2210 - ∇ - 2220	
			2245 - ∇ - 2345	
			2305 - ∇ - 2400	
Precip. 4.9 mm/.20 in.		Morn. cldy. K		Foren. cldy.
Snowfall/-Depth - in/ - in.		Noon cldy.		Aftern. PHy - cldy
		Eve. PHy. cldy		Night cldy K

H.S. 0022

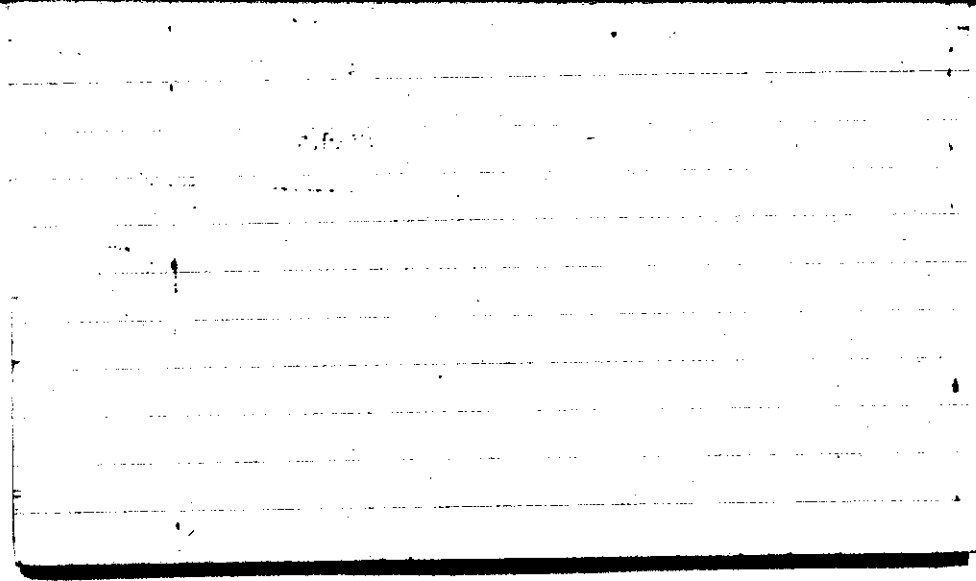


STATE COLLEGE, Pa. Date

AUG 23 1942

Time
0700

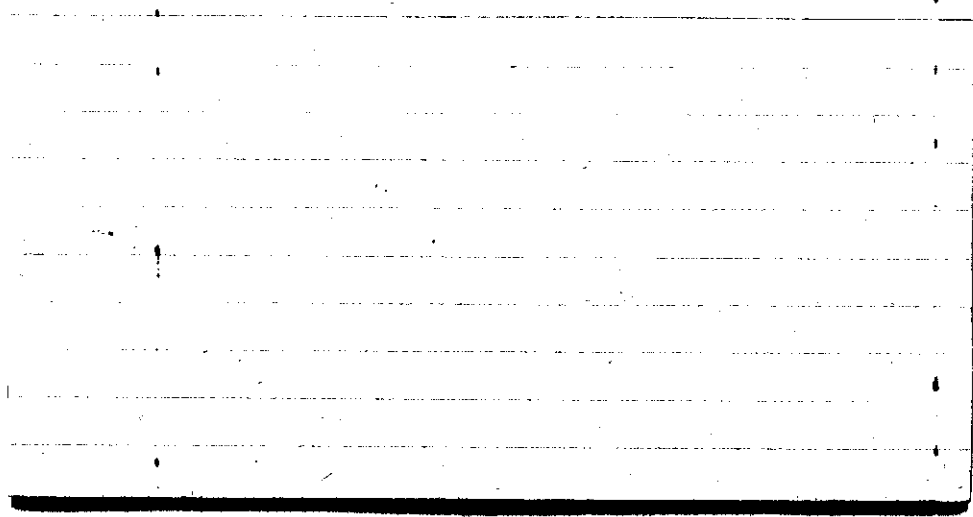
Max. 85	Wind P SW 1	Barom. t 81	General Obs. ∞	0215 - 8 - 0250
Min. 65	Vis. km. 20	p 28.78	0000 8' -	0130 - 8 - 0145
Dry 68	Clouds Ac, St,	p (red.) 28.64	R	0450 - 8 - 0530
Wet	Fs, Cu			0735 - 8 - 0830
R.H. 95	9	Morn. cldy.	Foren. cldy	0945 - 8 - 1020
Precip. 17.2 mm / .68 in.		Noon cldy	Aftern. cldy	1010 - 8 - 1050
Snowfall / -Depth - in / - in.		Eve. PHy cldy > Fair	Night Clear	1045 - 8 - 1050
A.S.				1105 - 8 - 1440
				1505 - 14 - 1800
				1915 - 8 - 1925
				0730



STATE COLLEGE, Pa. Date **AUG 24 1942**

Time
0700

Max. 69	Wind F Calm	Barom. t 75	General Obs. at	
Min. 52	Vis. km. 50	P 28.91		
Dry 54	Clouds Cu, Ac, ten	p (red.) 28.79		
Wet	Ci sum Ci pol.			
R.H. 91	Fog	Morn. fair	at	Foren. pty cldy
Precip. 4.3 mm / .17 in.		Noon pty cldy		Aftern. pty cldy-ctly
Snowfall/-Depth / in / / in.		Eve. Clear		Night
A.M.				0657

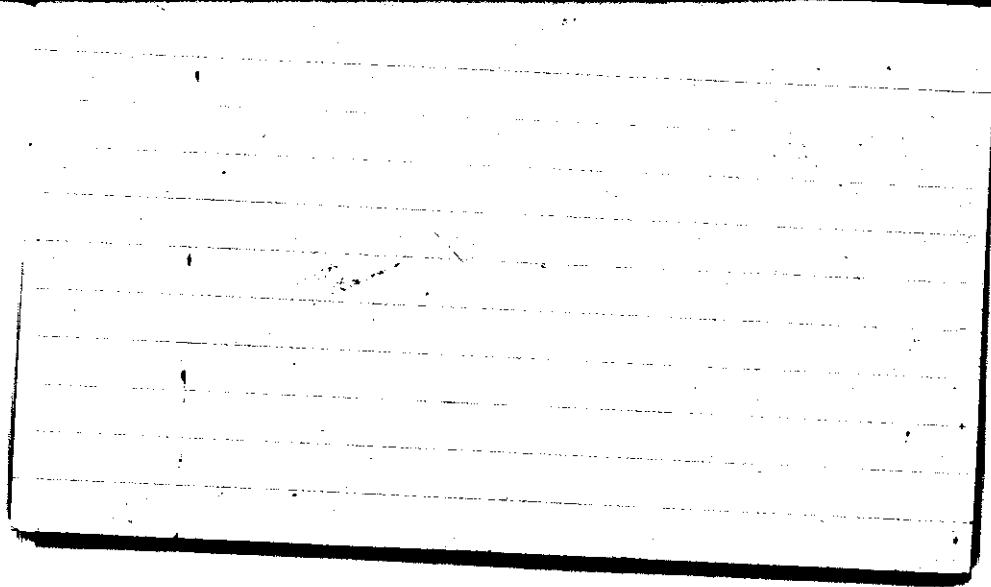


STATE COLLEGE, Pa. Date

AUG 25 1942

Time
0700

Max. 66	Wind F NW 1	Barom. t 70	General Obs. ☁ 1°
Min. 41	Vis. km. 25	p 29.20	
Dry 46	Clouds Ci fun 11	p(red.) 38.09	
Wet			
R.H. 90		Morn. fair	Foren. fair
Precip. / mm / in.		Noon fair to pty cldy	Aftern. fair
Snowfall/-Depth / in / in.		Eve. fair to pty cldy	Night Clear

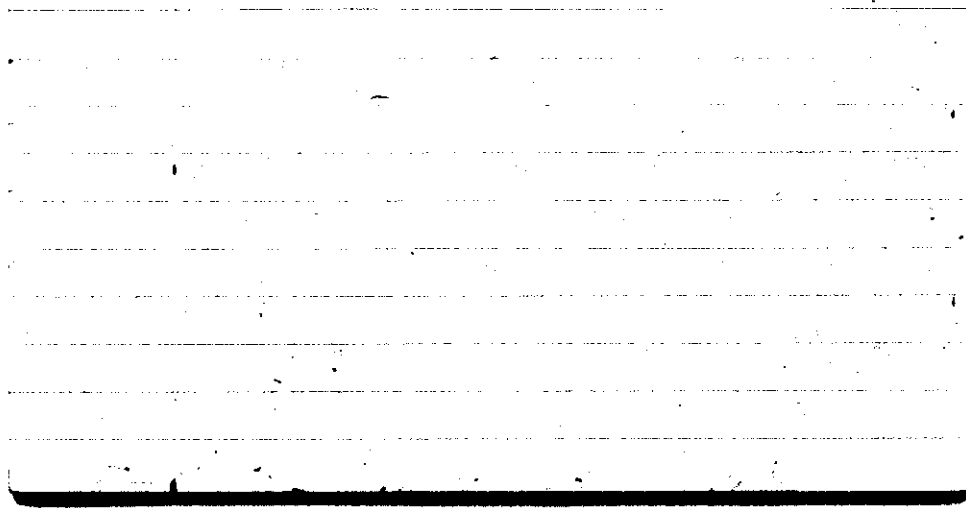


STATE COLLEGE, Pa. Date

AUG 26 1942

Time
0700

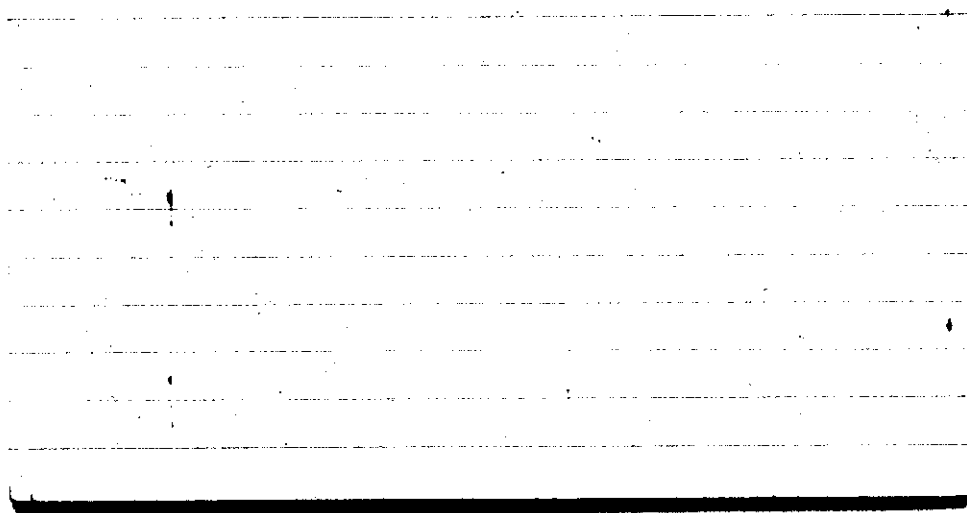
Max. 72	Wind F NE 1	Barom. t 71	General Obs. 0° W c
Min. 44	Vis. km. 10	p 29.25	
Dry 48	Clouds c: fd. 1	p (red.) 29.14	
Wet			
R.H. 95		Morn. fair	Foren. fair
Precip. / mm / in.		Noon fair	Aftern. fair c: fd. c: fd. c: fd.
Snowfall / -Depth / in.		Eve. fair	Night clear
	AS-KM		0650



STATE COLLEGE, Pa. Date AUG 27 1942

Time
0700

Max. 73	Wind P SE 1	Barom. t 67	General Obs. a'	
Min. 48	Vis. km. 20	29.19		
Dry 59	Clouds 6 ci, fil, Cs, Co, Ci pro ci flo.	p (red.) 29.09		
Wet				
R.H. 83		Morn. ptly cldy	Foren. ptly cldy	
Precip. / mm / in.		Noon Fair → ptly cldy	Aftern. Fair → ptly cldy	
Snowfall / -Depth / in / in.		Eve. Fair → ptly cldy	Night Fair → ptly cldy.	
AM 7.5				



STATE COLLEGE, Pa. Date

AUG 28 1942

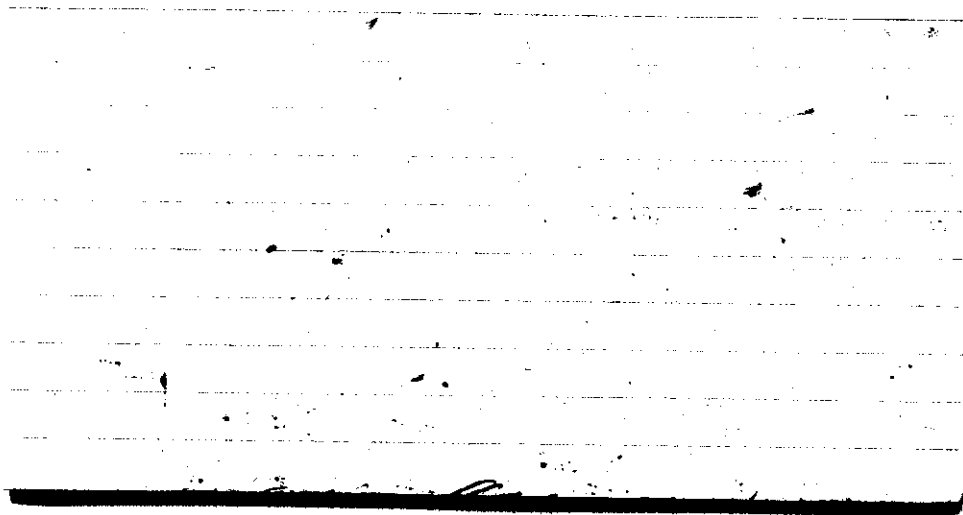
Time

0700

Max. 75	Wind F SW 2	Barom. t 76	General Obs. 0500 1630-1645
Min. 59	Vis. km. 20	p 29.04	
Dry 61	Clouds Ac, ST, Sc	p (red.) 28.82	
Wet			
R.H. 94%		Morn. overcast.	Foren. Over
Precip. T. mm / T. in.		Noon overcast	Aftern. Over light rain
Snowfall / -Depth in / in.		Eve. Over	Night Over.

A.M.A.S.

0700

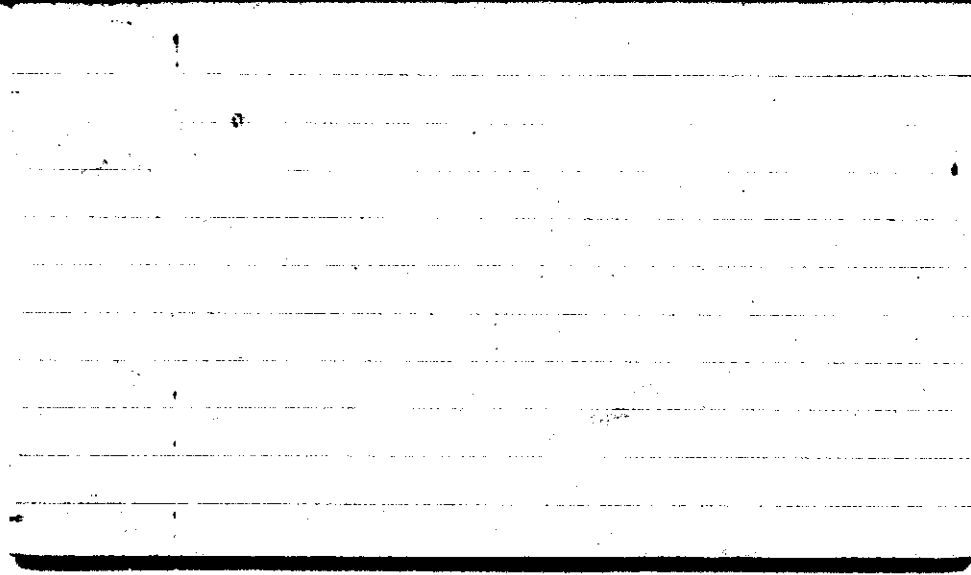


STATE COLLEGE, Pa. Date

AUG 29 1942

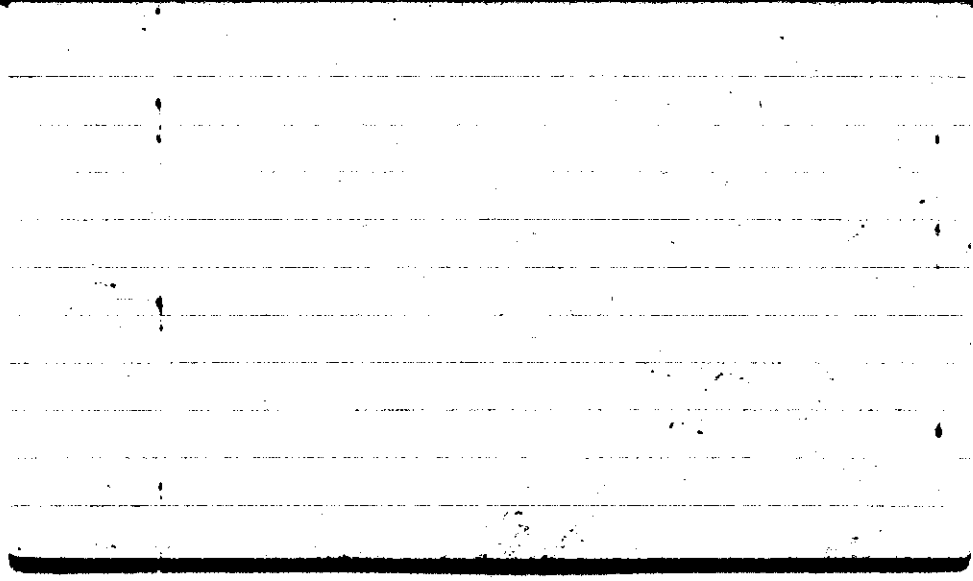
Time
0700

Max. 76	Wind F E 1	Barom. t 77	General Obs. = 0' 9720-1730T	
Min. 60	Vis. km. .6	p 28.98		
Dry 66	Clouds 9 Ac, St As	p (red.) 28.86		
Wet				
R.H. 97		Morn. ≡ cldy.	Foren. cldy	
Precip. T mm / T in.		Noon pthly cldy.	Aftern. pthly cldy	
Snowfall/Depth in/ in.		Eve. cldy	Night cldy	
AM			0715	



STATE COLLEGE, Pa. Date **AUG 30 1942** Time **0700**

Max. 82	Wind E 1	Barom. t 79	General Obs. Q° =
Min. 64	Vis. km. 7	29.19	190030-0045
Dry 66	Clouds As, St	p (red.) 29.06	190110-0230
Wet	Ns		190400-0700
R.H. 92		Morn. Ovc.	Foren. cldy
Precip. T mm / T in.		Noon cldy	Aftern. pty cldy cldy
Snowfall / -Depth / in / / in.		Eve. fair	Night clear
A.M.		0800	



STATE COLLEGE, Pa. Date AUG 31 1942

Time
0700

Max. 77	Wind F Calm	Barom. t 78	General Obs. ≡ ² 0 ²	
Min. 51	Vis. km. 50 m.	p 29.18		
Dry 53	Clouds X	p (red.) 29.05		
Wet				
R.H. 99		Morn. Foggy	Foren. Foggy	
Precip. T mm / T in.		Noon pty cldy → cldy	Aftern. pty cldy	
Snowfall / -Depth / in / / in.		Eve. fair	Night clear	
A.M.			0720	

