

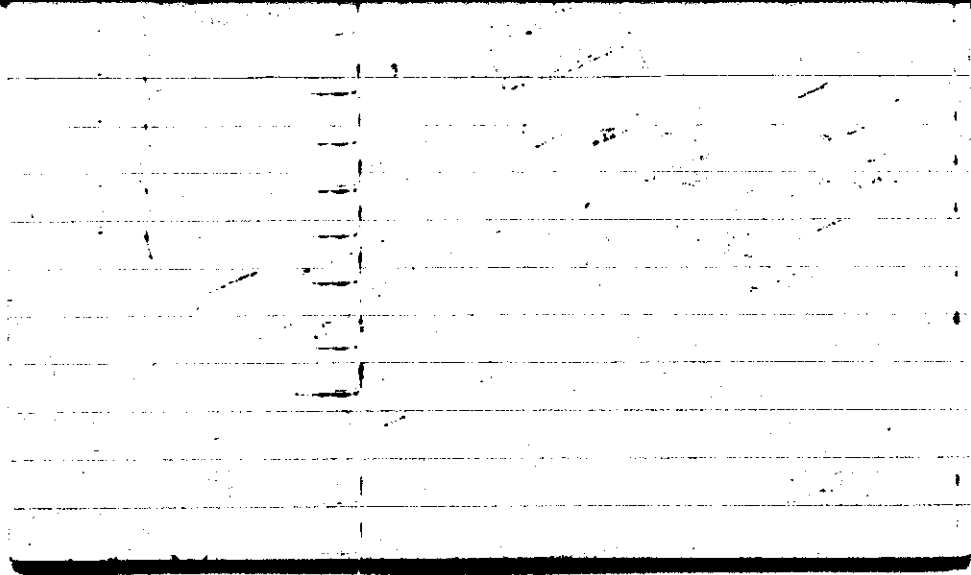
STATE COLLEGE, Pa. Date

NOV 1 1942

Time

0700

Max. 68	Wind F SW 5	Barom. t 77	General Obs.	
Min. 44	Vis. km. 10	p 28.54	• 0000-0130 • 0130-0210 • 0210-0405 • 0405-0500 • 0500-0545 • 0545-0715	
Dry 45	Clouds 10	p (red.) 28.42		
Wet	Ms, As			
R.H. 91		Morn. Rain	Foren. cldy	
Precip. 15.9 mm / 0.63 in.		Noon Fair	Aftern. Fair	
Snowfall / -Depth — in / — in.		Eve. Fair	Night Ptlly cldy	
AM.			0730	



STATE COLLEGE, Pa. Date

NOV - 2 1942

Time

0700

Max. 52	Wind F SW 4	Barom. t 69	General Obs. 0830 ° 0915 0755 ° 1005 1720 ° 1850 1925 101° 2130 2130 ° 2400	1335 (a) es web -14.5 ci fl ci pra cl
Min. 38	Vis. km. 25	p 28.74		
Dry 44	Clouds 10	p (red.) 28.64		
Wet	As, Fs			
R.H. 45		Morn. OVC. rain.	Foren. cldy rain	
Precip. 0.8 mm / 0.03 in.		Noon cldy	Aftern. cldy	
Snowfall / -Depth — in / — in.		Eve. ov. rain	Night OVC. rain	
AM.				0645

Header 1	Header 2
[Illegible]	[Illegible]
[Illegible]	[Illegible]
[Illegible]	[Illegible]
[Illegible]	[Illegible]
[Illegible]	[Illegible]
[Illegible]	[Illegible]
[Illegible]	[Illegible]

STATE COLLEGE, Pa. Date NOV - 3 1942

Time
0700

Max. 56	Wind F W4	Barom. t 71	General Obs. ∞
Min. 38	Vis. km. 20	p 28.98	0000 ° 0115 0235 101° 0300
Dry 39	Clouds 10	p (red.) 28.87	0455 101° 0510 0610 101° 0810
Wet	Ns, As		0840 101° 0850 1720 101° 1755
R.H. 84		Morn. Rain, Dve.	Foren. cly, Fair
Precip. 1.00 mm / 0.04 in.		Noon cly	Aftern. cly
Snowfall/-Depth — in / — in.		Eve. cly, Rain	Night Fair
AM.		0740	

	1
	2
	3
	4
	5
	6
	7
	8
	9
	10

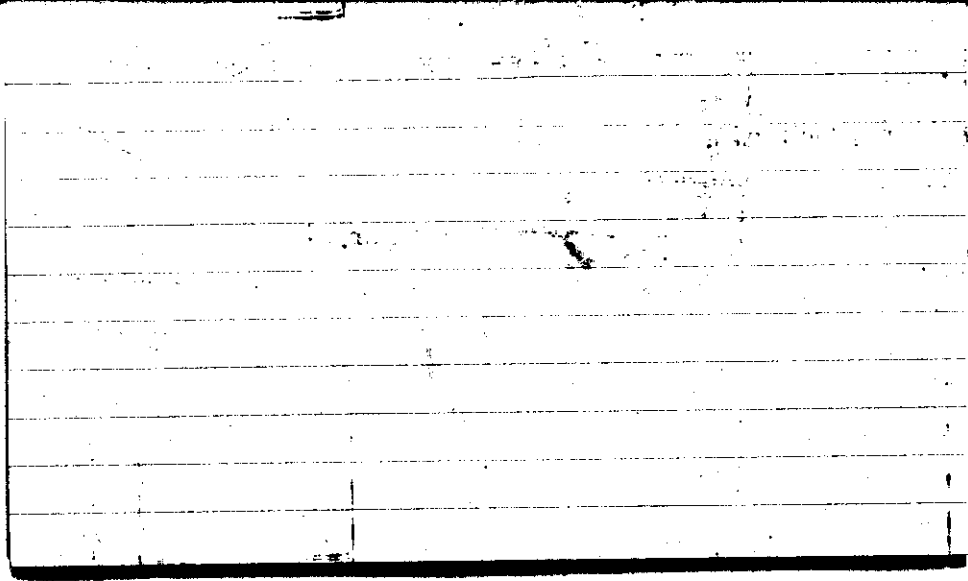
STATE COLLEGE, Pa. Date

NOV -4 1942

Time

0700

Max. 44	Wind F NW1	Barom. t 65	General Obs. L ²	
Min. 29	Vis. km. 25	29.30		
Dry 31	Clouds 4	p(red.) 29.20		
Wet	Sc			
R.H. 94		Morn. Pth cloudy	Foren. Pth cloudy	
Precip. T mm / T in.		Noon Pth cloudy - fair	Aftern. Fair	
Snowfall / -Depth — in / — in.		Eve. Fair → clear	Night Clear → Fair	
AM.			0805	



STATE COLLEGE, Pa. Date

NOV -5 1942

Time
0700

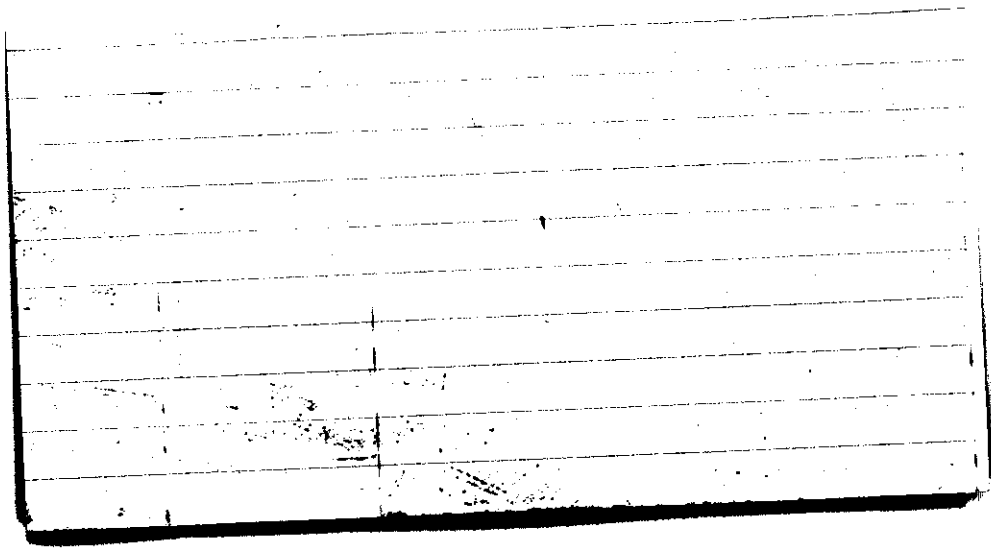
Max. 45	Wind F SW 2	Barom. t 62	General Obs. L'	
Min. 30	Vis. km. 25	p 29.24	0815 ☉	cont. ☉
Dry 36	Clouds Cc	p(red.) 29.15	1230 ☉	☉
Wet	1			
R.H. 65		Morn. Fair	Foren. pty cldy	
Precip. / mm / in.		Noon pty cldy	Aftern. pty cldy	
Snowfall/-Depth / in / in.		Eve. pty cldy	Night pty cldy → cldy	
AB..				

STATE COLLEGE, Pa. Date NOV - 6 1942

Time
0700

Max. 49	Wind F W 2	Barom. t 64	General Obs. ∞	
Min. 36	Vis. km. 20	p 29.12		
Dry 46	Clouds 10	p (red.) 29.03		
Wet	As, Ac			
R.H. 74		Morn. q → Overst	Foren. Overst.	
Precip. — mm / — in.		Noon Overst.	Aftern. Overst.	
Snowfall / -Depth — in / — in.		Eve. Overst → cldy	Night cldy - pty cldy	

AD

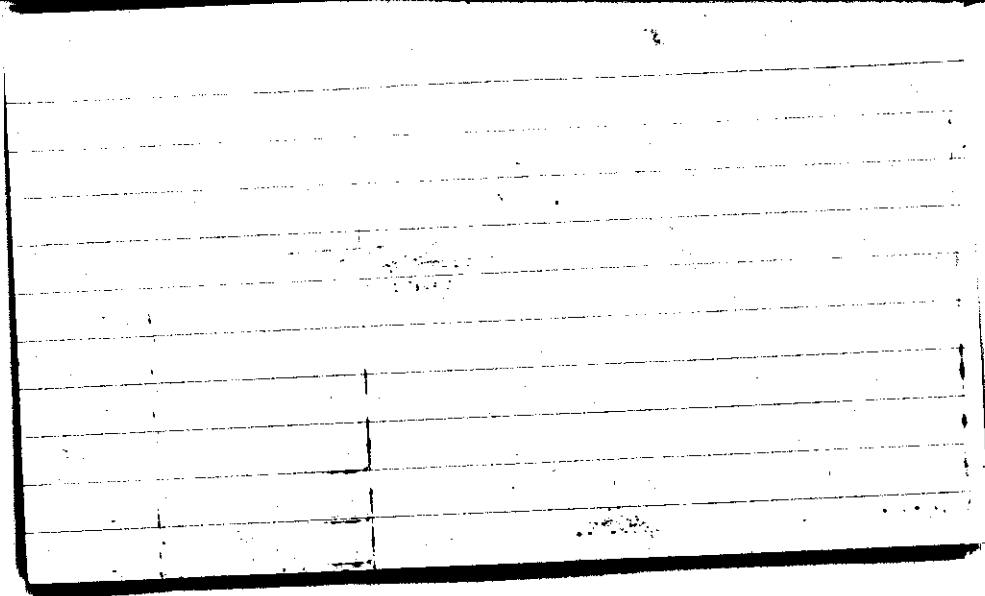


STATE COLLEGE, Pa. Date NOV -7 1942

Time 0700

Max. 54	Wind F NE 2	Barom. t 65	General Obs. = ° a' 1000 - 1200 (o) - 1400 1530 - 1600 °
Min. 37	Vis. km. 20	p 29.27	
Dry 38	Clouds 3	p(red.) 29.17	
Wet	Cs, Cc, Cfil, Cspre		
R.H. 97		Morn. Fair → pty cldy.	Foren. Fair
Precip. — mm/ — in.		Noon Fair	Aftern. pty cldy to dry aca
Snowfall/-Depth — in/ — in.		Eve. ddy	Night ddy

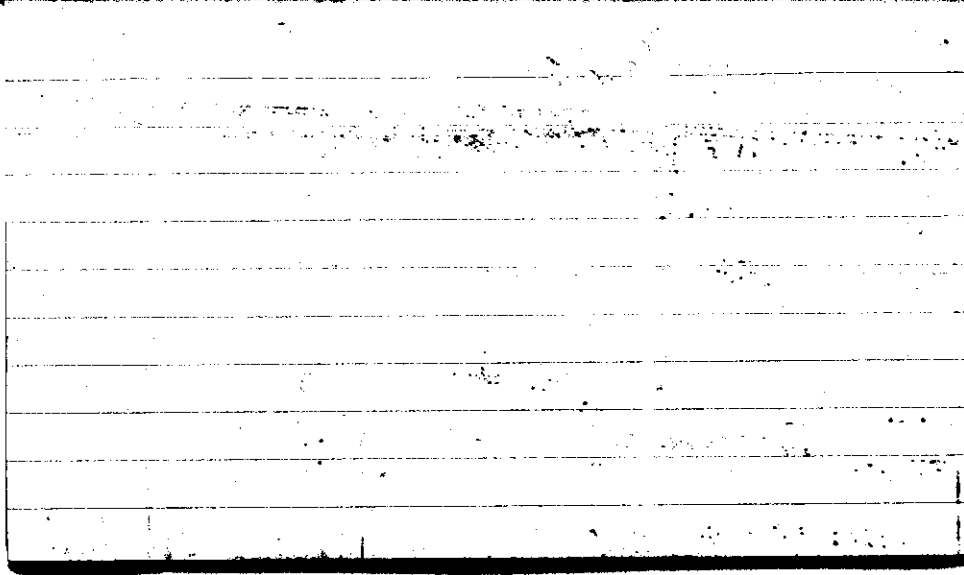
H. B.



STATE COLLEGE, Pa. Date NOV - 8 1942

Time
0700

Max. 54	Wind W 2	Barom. 67	General Obs. \equiv^2
Min. 37	Vis. km. 8	29.24	0035-0120
Dry 44	Clouds ST, As	p(red.) 29.14	0930 - 1210 °°
Wet	10		1240 - 1340 °°
R.H. 97		Morn. cloudy to overcast	Foren. overcast rain NS
Precip. .2 mm / .01 in.		Noon overcast rain	Aftern. overcast rain
Snowfall / -Depth in / in.		Eve. overcast	Night foggy
A.B.		0720	



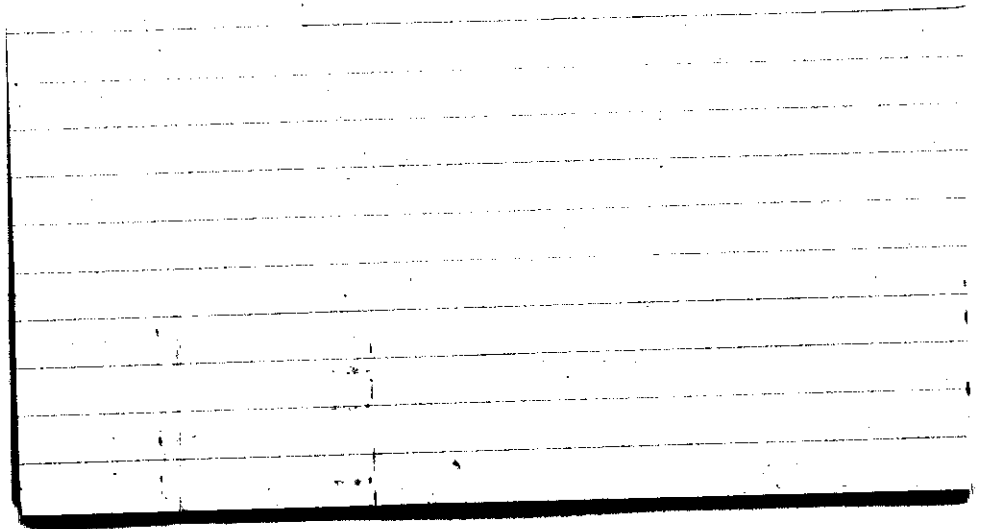
STATE COLLEGE, Pa. Date

NOV - 9 1942

Time
0700

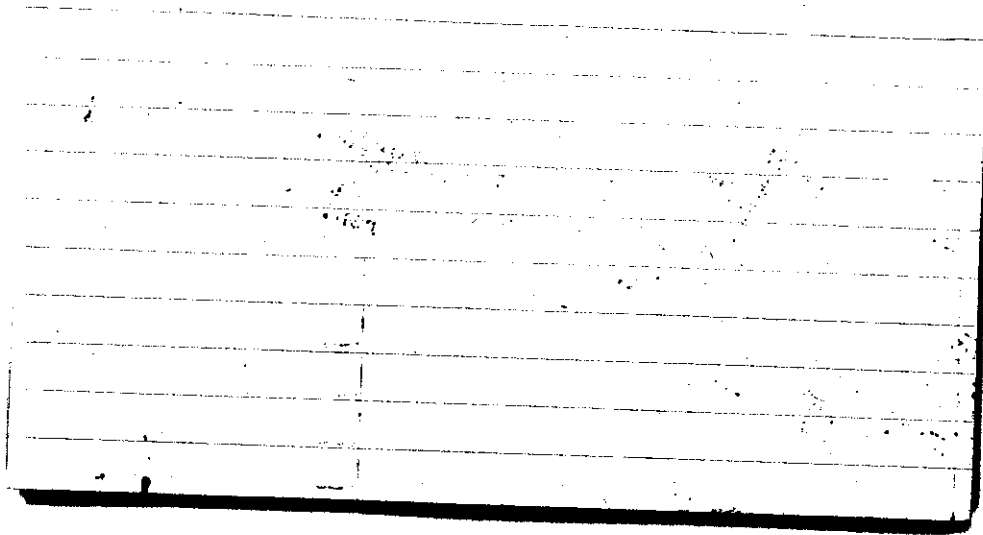
Max. 48 38	Wind P SE 2	Barom. t 65	General Obs. ≡
Min. 34	Vis. km. .05	29.16	
Dry 35	Clouds	p (red.) 29.06	
Wet			
R.H. 95		Morn. foggy	Foren. foggy (clearing)
Precip. 2.0 mm / .08 in.		Noon fair c. f. i.	Aftern. pty cldy - cldy.
Snowfall / -Depth — in / — in.		Eve. pty cldy → cldy	Night cldy → overcast

F.B.



Max. 54	Wind F S 5	Barom. t 68	General Obs. ∞
Min. 33	Vis. km. 5	28.66	1105.0 - 1125
Dry 54	Clouds 9	p(red.) 28.56	1125 - 1315
Wet	St, Sc, Fs Ce, Cifloc.		1330 - 1430 1455 - 1510 1750 - 1930 101° A 2100 2245 101°
R.H. 87		Morn. cldy → overcast	Foren. overcast
Precip. — mm / — in.		Noon overcast	Aftern. overcast - rain
Snowfall / -Depth — in / — in.		Eve. overcast - sleep	Night overcast

H.B.

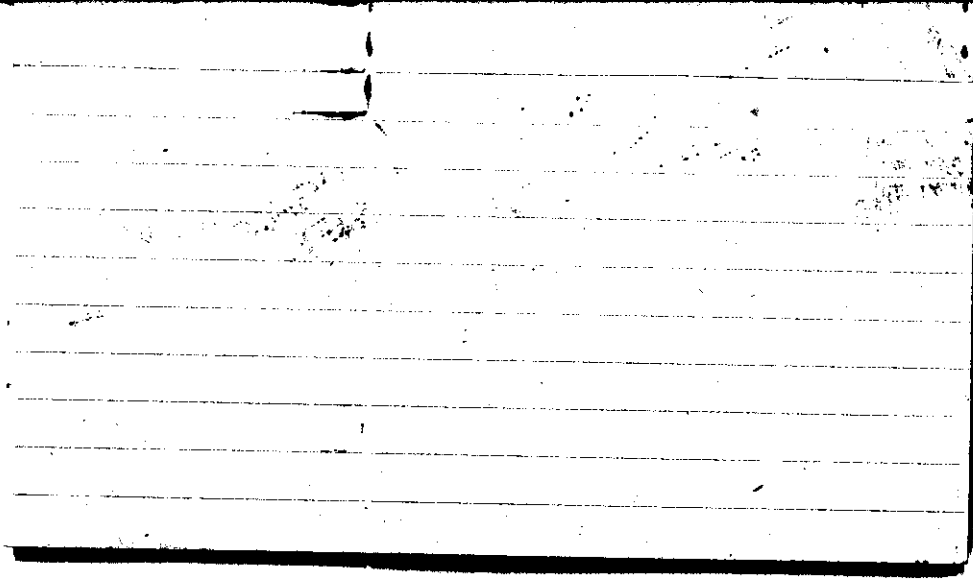


STATE COLLEGE, Pa. Date

NOV 11 1942

Time
0700

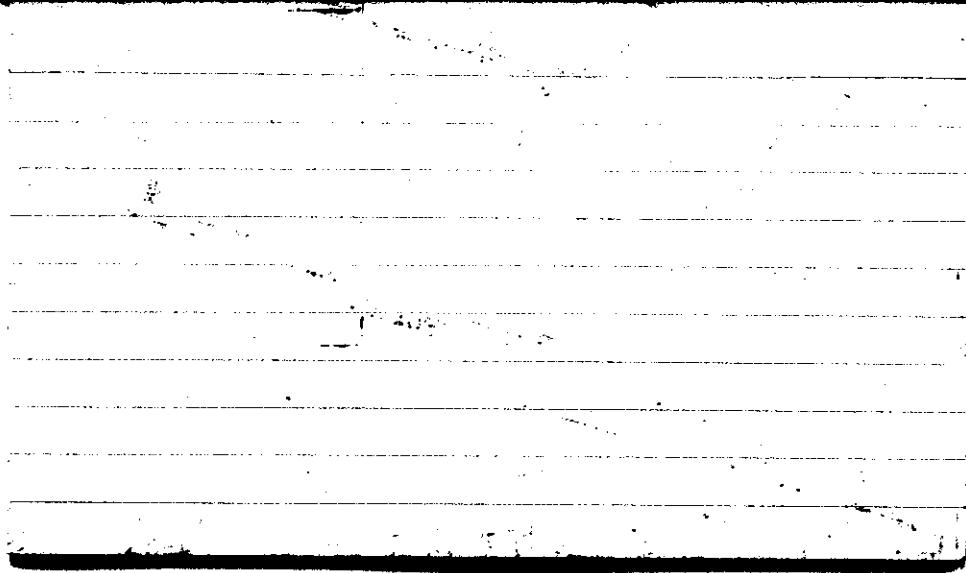
Max. 60	Wind P W 4	Barom. t 68	General Obs. *° Δ/°	
Min. 30	Vis. km. 30	28.92	0100-0300 10/17 * 1°	
Dry 31	Clouds 10	p(red.) 28.82	0610 * 1° - 0805	
Wet	F _s , N _s , ST Sc.			
R.H. 75		Morn. Overst. snow°	Foren. cldy.	* flurries
Precip. 5.7 mm / .23 in.		Noon cldy.	* flurries	Aftern. cldy * flurries
Snowfall/-Depth T in / T in.		Eve. Ptly cldy → Fair	Night clear	
A.S.				



STATE COLLEGE, Pa. Date NOV 12 1942

Time
0700

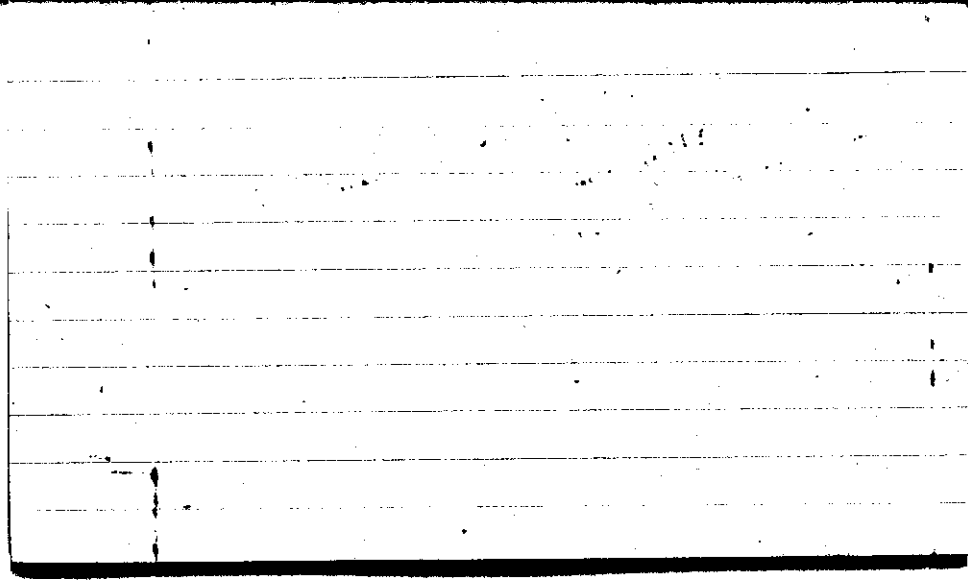
Max. 35	Wind \bar{P} WNW 5	Barom. t 65	General Obs. * no neb. u u from
Min. 28	Vis. km. 30	28.84	0015 1 1°-0215 0215 2 0225
Dry 31	Clouds 6	p(red.) 28.74	0240 1 0720 1033 1 1045
Wet	Sc, Fc, Ac		1400 (a) no neb. -1650
R.H. 67		Morn. <i>ptly cldy</i> <i>Snow Flutters</i>	Foren. <i>cldy</i>
Precip. T mm / T in.		Noon <i>cldy to ptly</i> <i>cldy</i>	Aftern. <i>ptly cldy</i>
Snowfall/-Depth T in / T in.		Eve. <i>cldy</i>	Night <i>cldy</i>
A.M.			0725



STATE COLLEGE, Pa. Date NOV 13 1942

Time 0700

Max. 50	Wind F W 4	Barom. t 69	General Obs. ci. Nat.
Min. 31	Vis. km. 25	p 28.41	0100° 0155 0948 10 -1020
Dry 36	Clouds 3	p(red.) 28.31	0155 10° 0345 101° 1020-1400
Wet	Sc, Fe, Ac		0345° 0505 101° 0190-2300
R.H. 83		Morn. Fair → pthy cldy	Foren. cldy * shower
Precip. T mm / T in.		Noon cldy	Aftern. cldy ∇
Snowfall/-Depth T in / — in.		Eve. pky cldy	Night cldy snowfl.
AM.			0730

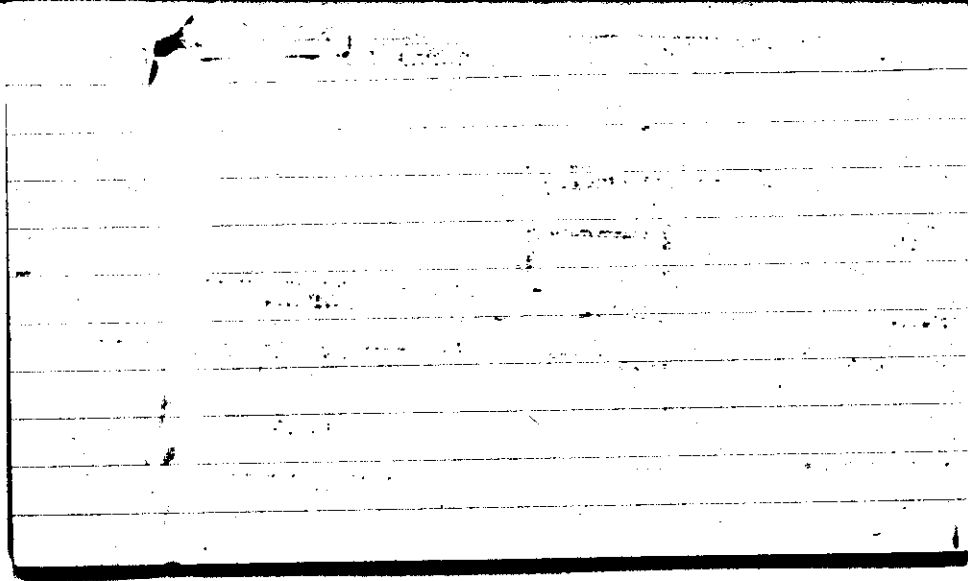


STATE COLLEGE, Pa. Date

NOV 14 1942

Time
0700

Max. 42	Wind F WNW 5	Barom. t 62	General Obs. /X 0000-0745	
Min. 20	Vis. km. 50	28.92		
Dry 21	Clouds 4	p(red.) 28.93		
Wet	FC			
R.H. 68		Morn. pty cdy snow	Foren. f	
Precip. 1.2 mm / 0.05 in.		Noon pty cdy	Aftern. pty cdy	
Snowfall/-Depth 0.5 in / 0.5 in.		Eve. pty cdy	Night pty cdy to fair	
IN		0730		



STATE COLLEGE, Pa. Date NOV 15 1942

Time 0700

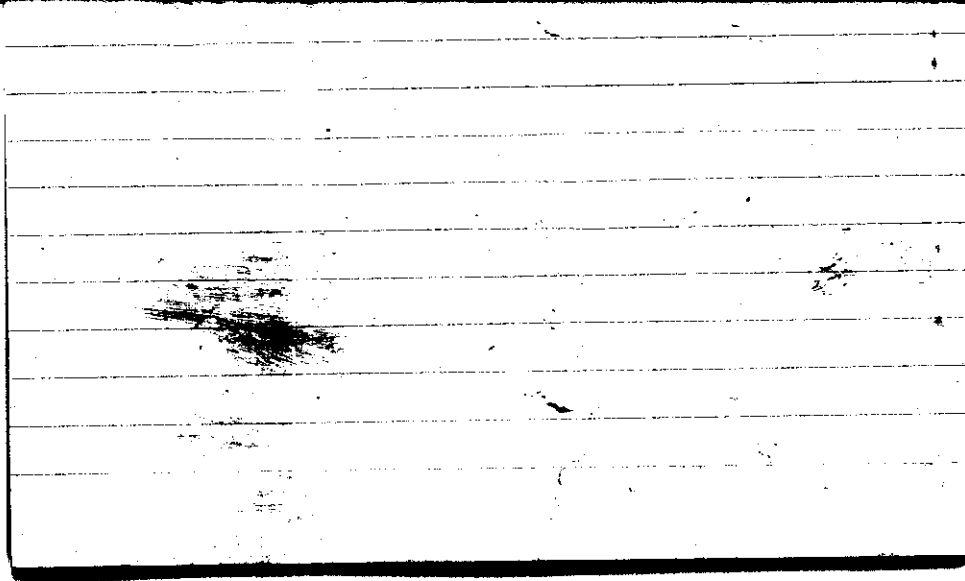
Max. 38	Wind P c/m	Barom. t 64	General Obs. 00 L ^o 2130-2400 ② as met.
Min. 18	Vis. km. 8	P 29.14	
Dry 19	Clouds 1 Ac	p(red.) 29.05	
Wet			
R.H. 71		Morn. fair	Foren. clear
Precip. T mm / T in.		Noon clear	Aftern. fair
Snowfall/-Depth T in / T in.		Eve. fair	Night fair

HN. 0700

STATE COLLEGE, Pa. Date NOV 16 1942

Time
0700

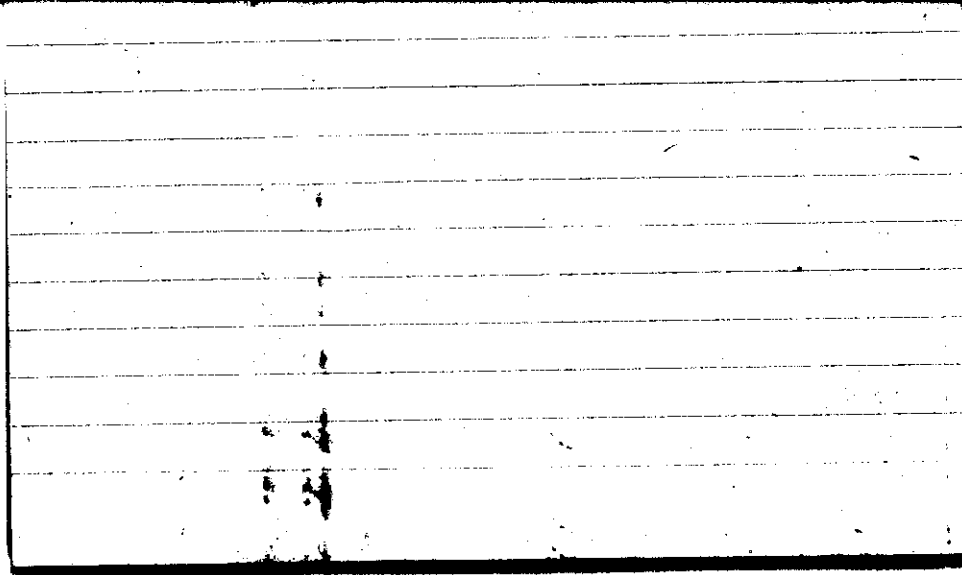
Max.	Wind P.	Barom.	General Obs.		
47	Calm	t 67	L 1° 00		
Min.	Vis. km.	p			
19	12	29.11			
Dry	Clouds	p (red.)			
31	1	29.01			
Wet	Ciflo.				
R.H.	62	Morn.	clear	Foren.	Fair
Precip.	— mm / — in.	Noon	Fair	Aftern.	Fair
Snowfall/Depth	— in / — in.	Eve.	clear	Night	clear
AM 0700					



STATE COLLEGE, Pa. Date NOV 17 1942

Time
0700

Max. 59	Wind F SW 1	Barom. t 69	General Obs. ∞ —°	
Min. 28	Vis. km. 10	29.08	1230-1245	12315-2400
Dry 35	Clouds 3	p (red.) 28.97	1° 1345-1510	
Wet	Ac		1° 1545-1600	
R.H. 77	Ci unc, Ci flo., Cs, Cs		1° 1820-1835	
			1° 1855-2255	
		Morn. Fair - fly cldy	Foren. Cldy	
Precip. — mm / — in.		Noon Cldy, Rain	Aftern. Ovc., Rain	
Snowfall / -Depth — in / — in.		Eve. Ovc., Rain	Night Ovc., Rain	
AM. 0700				



STATE COLLEGE, Pa. Date

NOV 18 1942

Time

0700

Max.	Wind F	Barom.	General Obs.
62	SW 2	t 69	101'0000-0040
Min. 34	Vis. km. 3	p 28.88	101'0050-0420
Dry 53	Clouds 10	o (red.) 28.77	101'0420-0530
Wet	Ns, As, Fs		101'0530-0555
R.H. 96		Morn. ovc., Rain	Foren. cldy - Ptlly cldy
Precip. 10.4 mm / 0.41 in.		Noon Ptlly cldy	Aftern. Ptlly cldy
Snowfall / -Depth in / in.		Eve. Ptlly cldy - Fair	Night Fair
AM.		0815	

+ 254

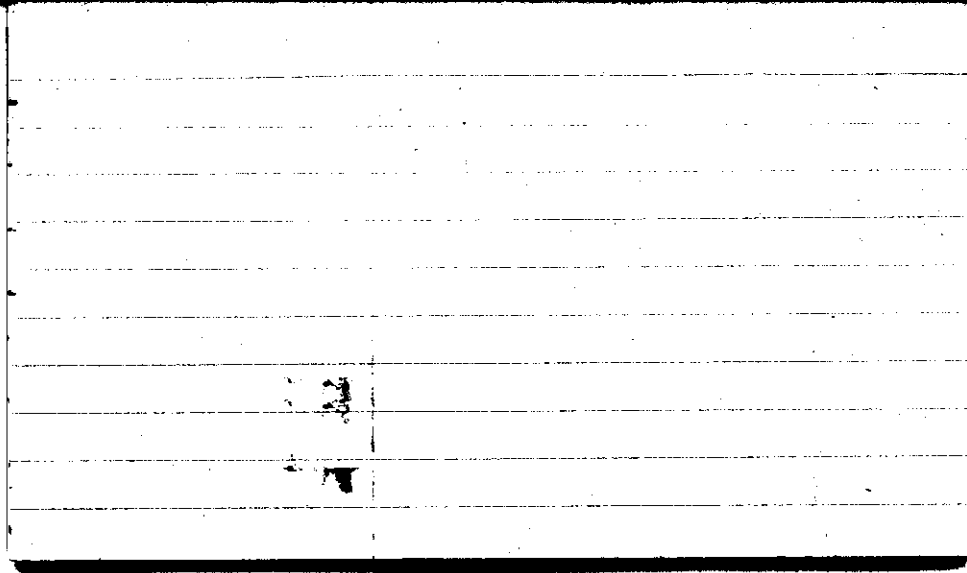
Mizusawa (169) -185 + 439 624 + 1.5 3.7

0	-2	-1	-8	3	2	9	4	4
-4	8	-2	2	3	5	3	-2	-1
0	7	5	5	6	5	8	7	5
+1	1	2	4	6	2	9	6	1
+2	-2	-1	3	0	-6	2	5	4
-3	-9	-1	2	9	4	4	6	1
-2	-9	-1	5	4	6	3	2	-1
-1	0	-6	4	-3	-3	8	3	-1
+3	-4	1	2	4	-8	-7	3	2
+1	-1	-2	2	2	1	-1	8	
-7	-7	6	-5	7	1	-5	0	
0	0	1	-1	2	-1	-4	-3	
0	3	7	-1	-5	6	2	-3	
-5	-4	1	3	-8	5	5	0	
-1	-5	9	6	3	-2	-2	0	
-6	-4	7	9	4	1	2	-2	
-1	6	1	3	-3	7	6	7	
-2	6	7	7	-2	7	3	0	
7	-9	5	3	-2	-2	6	0	
8	0	-1	0	-7	7	2	5	

STATE COLLEGE, Pa. Date NOV 19 1942

Time
0700

Max. 61	Wind P WSW 1	Barom. t 64	General Obs. = ' L '
Min. 35	Vis. km. 20	p 29.09	
Dry 38	Clouds Ac	p (red.) 29.00	
Wet	1		
R.H. 93		Morn. Fair	Foren. Fair → Ptlly cldy
Precip. T mm / T in.		Noon Ptlly cldy	Aftern. Ptlly cldy
Snowfall / -Depth in / in.		Eve. Ptlly cldy	Night Ptlly cldy
A. B.			



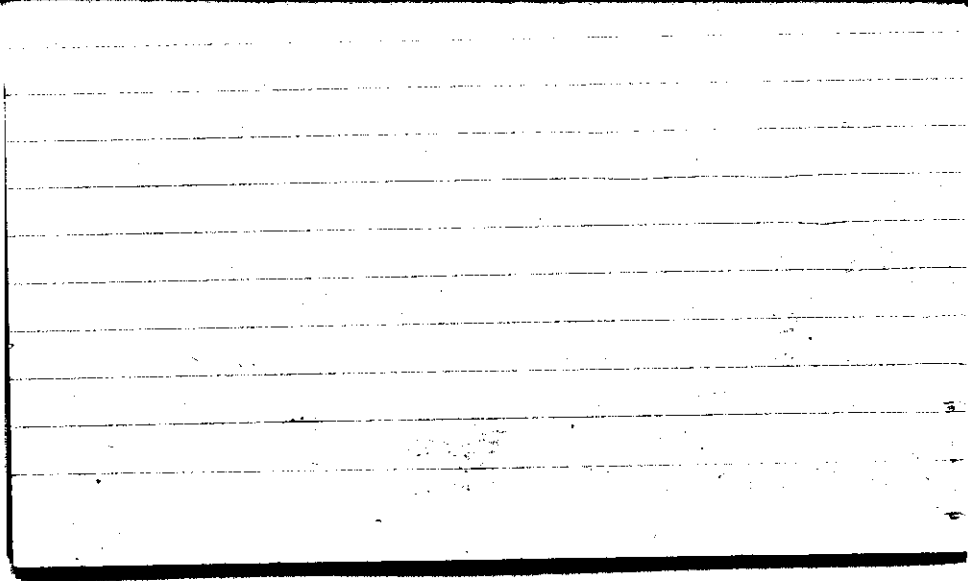
STATE COLLEGE, Pa. Date

NOV 20 1942

Time

0700

Max. 69	Wind F WNW 4	Barom. t 73	General Obs. 6400-0530 0'	
Min. 37	Vis. km. 20	28.90	0000-0530 see next day	
Dry 64	Clouds 4	p(red.) 28.78		
Wet	Hc, As, Fc			
R.H. 74	Cond. ci flocc	Morn. ^{rain} pty. cldy.	Foren. pty cldy	
Precip. — mm / — in.		Noon pty cldy.	Aftern. pty cldy + cldy	
Snowfall / -Depth — in / — in.		Eve. pty cldy cldy	Night cldy	
A.B.				0800



STATE COLLEGE, Pa. Date

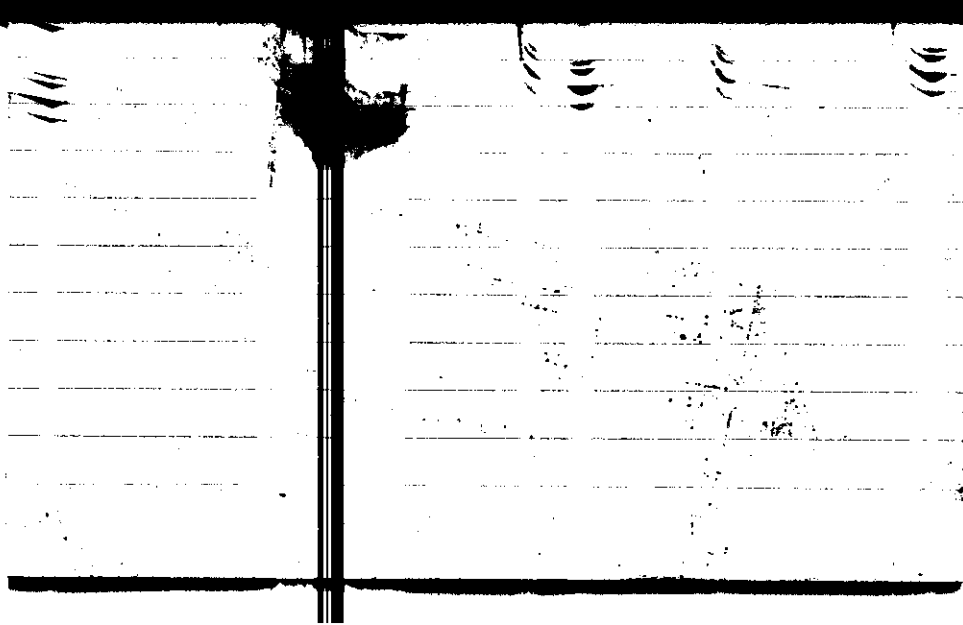
NOV 21 1942

Time

0700

Max.	Wind F	Barom.	General Obs.	
70	WNWS	t 73	00345-0040 ☉	2145 ☉ -2400
Min. 62	Vis. km. 8	p 28.75	0040-0045 ☉	ci neb
Dry 65	Clouds 7	p(red.) 28.63	0745 ☉ - 1100	ci flou
Wet	Fs, As		1200 ☉ - 1230	ci fl
R.H. 68		Morn. cldy rain	Foren. overcast rain	
Precip. — mm/ — in.		Noon Overcast rain	Aftern. Overcast → cldy rain	
Snowfall/-Depth — in/ — in.		Eve. cldy → pty cldy	Night pty cl → fair	

A.B.

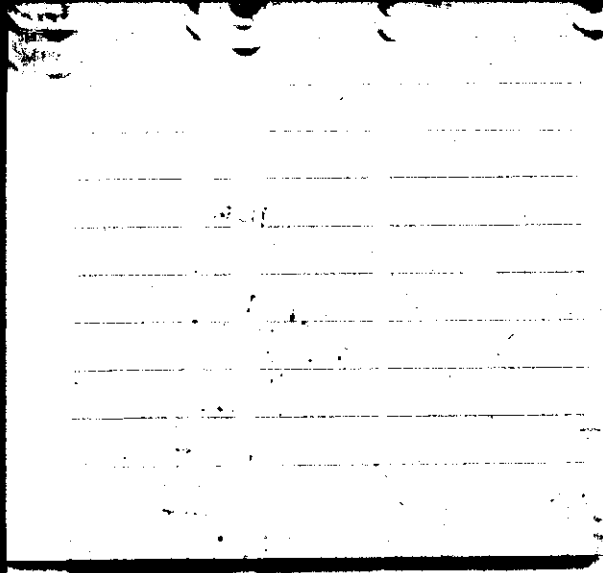
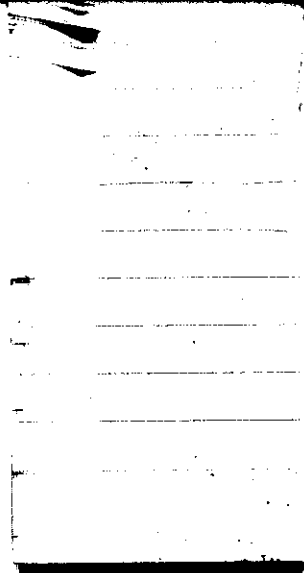


STATE COLLEGE, Pa. Date

NOV 22 1942

Time
0700

Max. 65	Wind F N 2	Barom. t 65	General Obs. 0000 - 0200 ☉ 0720 ☉ - 0740 1140 ☉
Min. 26	Vis. km. 30	p 29.15	12 ⁰⁰ ☉ 1245 ☉
Dry 26	Clouds 1	p(red.) 29.05	1305 ☉ 1600 ☉ - 1630
Wet	Ce, cum Cfil.		1930 ☉ - 2300
R.H. 87		Morn. Fair	Foren. fair
Precip. 1.8 mm / .07 in.		Noon pty cldy	Aftern. pty cldy c. ma. c. fern
Snowfall / -Depth in / in.		Eve. pty cldy	Night pty cldy
A.B.			



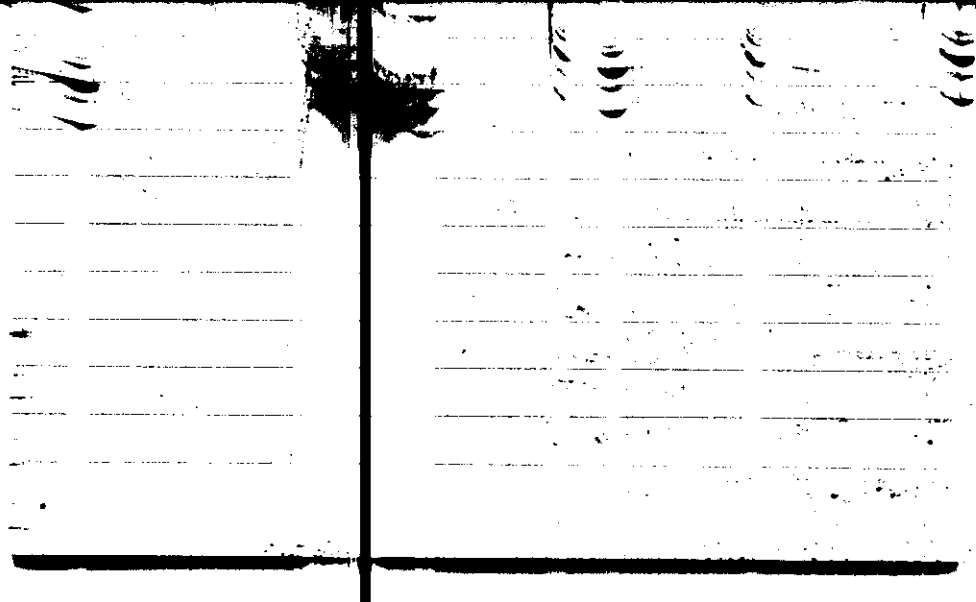
STATE COLLEGE, Pa. Date

NOV 23 1942

Time

0700

Max. 39	Wind F W E 2	Barom. t 63	General Obs.	
Min. 26	Vis. km. 15	p 29.06	9° 0800 - 1400	
Dry 30	Clouds 8	p(red.) 28.97	10° 1400 - 1600	
Wet	Ac		19° 1600 - 2400	
R.H. 66		Morn. cldy	Foren. over drizzle	
Precip. mm/ in.		Noon over drizzle rain	Aftern. over drizzle	
Snowfall/-Depth in/ in.		Eve. overcast drizzle	Night overcast drizzle	
H.B.				



Max.	Wind F	Barom.	General Obs.
40	NE 2	t 62	≡
Min. 30	Vis. km. 1	28.62	10 ^p 0000 - 0400
Dry 37	Clouds N 10	p (red.) 28.53	9 ^p 0515 - 0550
Wet	AS		9 ^p 0645 - 0720
			9 ^p 0720 - 1400
			9 ^p 1400 - 2200
R.H. 98		Morn. fog -	Foren. over shown
Precip. 0.9 mm / .04 in.		Noon over rain	Aftern. over
			drizzle
Snowfall / -Depth in. / in.		Eve. over drizzle	Night over
A.B.		0720	

+ 2

Zinsen 41 - 1 + 3 4 . + 0,5 1,0

\bar{z}

7

1

STATE COLLEGE, Pa. Date NOV 25 1942

Time
0700

Max.	Wind F	Barom.	General Obs.
45	NE 3	t 64	7° 0050-0500
Min. 36	Vis. km. 5	p 28.39	9° 0615-0630
Dry 45	Clouds 9	p(red) 28.30	
Wet	Sc.		
R.H. 87		Morn. cldy rain 21st	Foren. ovc
Precip. 14.4 mm/0.57 in.		Noon ovc.	Aftern. ovc.
Snowfall/-Depth — in/ — in.		Eve. ovc.	Night ovc.

AB

France

Strasbourg	(75)	- 202	+ 52	- 151	255	- 2.0	3.4
Besancon	(21)	- 19	+ 50	+ 31	69	+ 1.5	3.3
Grenoble	(2)		+ 15	+ 15	15	+ 7.5	7.5
Marseille	(2)	- 2	+ 1	- 1	3	- 0.5	1.5
Paris	(61)	- 41	+ 125	+ 84	166	+ 1.4	2.7

(161) - 265 + 243 - 22 508 - 0.1 3.1

STATE COLLEGE, Pa. Date

NOV 26 1942

Time

0700

Max. 46	Wind F SW 1	Barom. t 69	General Obs. L' = ' ci fl
Min. 31	Vis. km. 4	28.52	° 1245-1335
Dry 32	Clouds 3	28.43	
Wet	Ac.		
R.H. 99		Morn. Fair - pthly cldy	Foren. fair
Precip. — mm/ — in.		Noon fair to pthly cl	Aftern. over drizzle snow
Snowfall/ -Depth — in/ — in.		Eve. ovc.	Night ovc.
AM		0700	

-19

= Simpson's (27) $-37 + 18 \quad 55 \quad -0.7 \quad 2.0$

-3	0		
0	-2		
1	-2		
-7	0	ms.	
-2	2		
0	-3		
2	-6		
0			
2		ms.	
-1			
-4			
0			
9			
-1			
-3			
0			
2			
-3			
0			

STATE COLLEGE, Pa. Date NOV 27 1942

Time
0700

Max. 47	Wind F WSW 4	Barom. 67	General Obs.
Min. 26	Vis. km. 25	28.68	*1045-22
Dry 27	Clouds 3	28.58	
Wet	Fc, Sc		
R.H. 66		Morn. Fair → Pthly cldy	Foren. Pthly cldy Snow Flurries
Precip. 0.3 mm / 0.0 in.		Noon Pthly cldy Snow Flurries	Aftern. Pthly cldy Snow Flurries
Snowfall, -Depth — in / — in.		Eve. Fair → Pthly cldy	Night Fair
AM		0730	

STATE COLLEGE, Pa. Date

NOV 28 1942

Time

0700

Max.	Wind F	Barom.	General Obs.
29	W5	t 65	0750127 - 0930
Min.	Vis. km.	P	
21	20	28.90	
Dry	Clouds	p (red.)	
24	7	28.80	
Wet	Sc		
R.H.	62	Morn. Pily cldy → cldy	Foren. cldy Snow Flurries
Precip.	T mm / T in.	Noon cldy	Aftern. cldy
Snowfall / -Depth	T in / T in.	Eve. Pily cldy → cldy	Night Pily cldy
AM 0700			

$\begin{matrix} +6 \\ -7 & -2+8 & 10 & +3.0 & 5.0 \\ -2 \end{matrix}$

STATE COLLEGE, Pa. Date NOV 29 1942

Time
0700

Max. 35	Wind F SSW 2	Barom. t 65	General Obs. 0745-1510
Min. 24	Vis. km. 18	P 28.80	1510-2200
Dry 31	Clouds > 9	p (red.) 28.70	
Wet	Sc		
R.H. 68		Morn. cldy	Foren. ovc. Rain
Precip. T mm / T in.		Noon ovc. Rain	Aftern. ovc. Snow
Snowfall / -Depth T in / T in.		Eve. ovc. Sleet	Night cldy
AM	0700		

Tokyo (30)	-49	123	72	-0.9	2.4
-4	4				
3	3				
2	2				
0	-1				
-1	-4				
-3	-2				
-3	-1				
-3	-1				
2	-4				
-8	-1				
-5					
-1					
-2					
2					
1					
-1					
4					
0					
-2					
-2					

STATE COLLEGE, Pa. Date NOV 30 1942

Time
0700

Max. 39	Wind F WNW 4	Barom. t 64	General Obs.	
Min. 30	Vis. km. 20	p 28.67		
Dry 34	Clouds 7	p(red.) 28.58		
Wet	Ac, Sc			
R.H. 74		Morn. pty cldy → cldy	Foren. pty cldy	
Precip. 3.6 mm / 0.14 in.		Noon pty cldy	Aftern. cldy	
Snowfall / -Depth 0.5 in / T in.		Eve. cldy	Night cldy	
AM		0730		

Kantons

$\frac{-1}{6}$

(3)

$\frac{1}{2}$

-2
+6
+4
8
+1.3
2.7