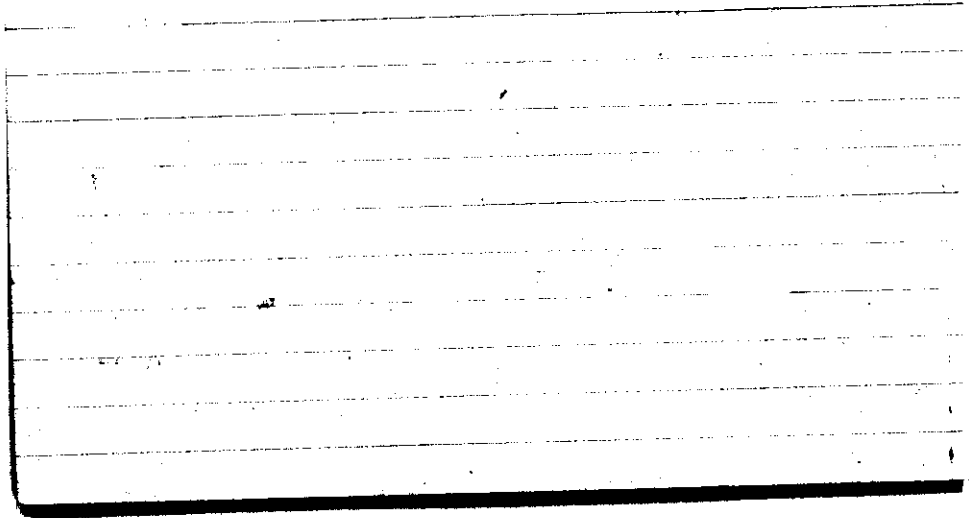


STATE COLLEGE, Pa. Date OCT - 1 1942

Time
0700

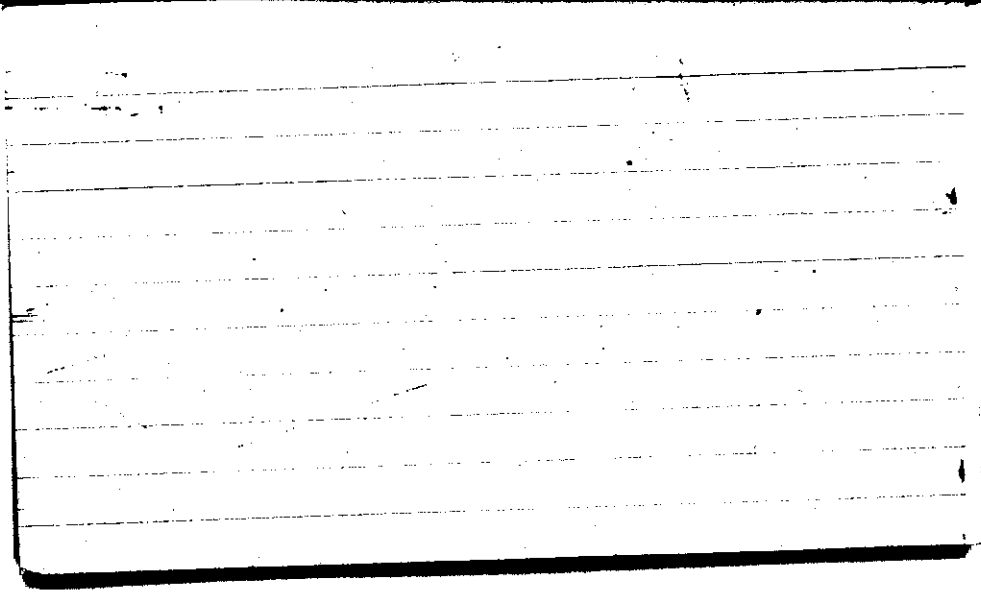
Max. 62	Wind P WNW 2	Barom. t 70	General Obs. ∞	
Min. 35	Vis. km. 15	P 28.89		
Dry 48	Clouds 8	p(red.) 28.78		
Wet	Ac			
R.H. 85		Morn. pty cldy → cldy	Foren. pty cldy to cldy	
Precip. — mm / — in		NOON Fair	Aftern. Fair	
Snowfall / -Depth — in / — in		Eve. Fair	Night fair	
AM.			0700	



STATE COLLEGE, Pa. Date OCT - 2 1942

Time
0700

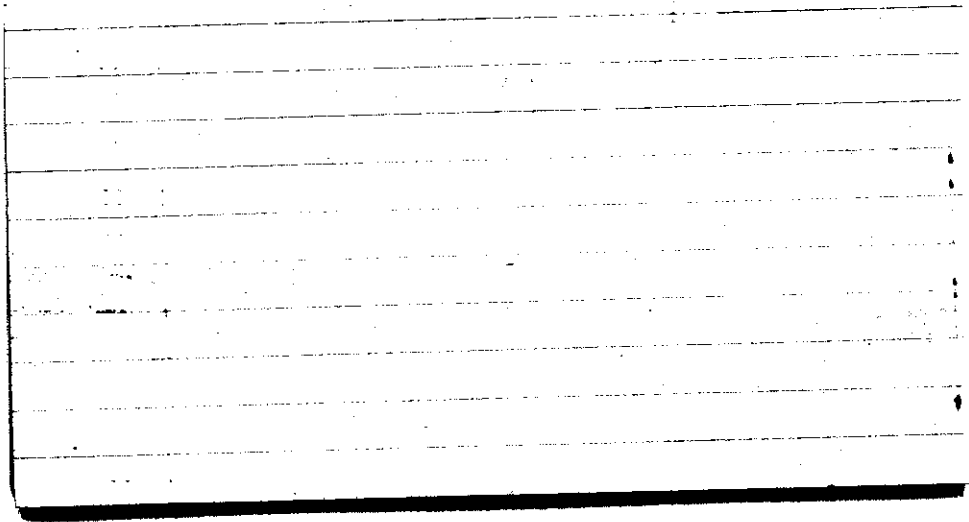
Max. 72	Wind F Calm	Barom. t 62	General Obs. a ⁺ = ⁺
Min. 45	Vis. km 60 m.	29.01	
Dry 47	Clouds X	p(red.) 28.92	
Wet			
R.H. 96		Morn. Foggy	Foren. Foggy
Precip. — mm / — in.		Noon Fair	Aftern. Fair Cifil., cc, cs, Ci unc.
Snowfall/-Depth — in / — in.		Eve. Fair	Night pty cldy
A.M.			0700



STATE COLLEGE, Pa. Date **OCT 3 1942**

Time
0700

Max. 72	Wind SSE 3	Barom. 73	General Obs. 2° ∞	
Min. 45	Vis. km. 10	29.14		
Dry 52	Clouds 9	p (red.) 29.02		
Wet	As, Fe			
R.H. 88		Morn. cldy	Foren. ste. cldy	
Precip. — mm / — in.		Noon Ovc	Aftern. Ovc	
Snowfall/-Depth — in / — in.		Eve. Ovc.	Night Ovc.	
AM			0700	



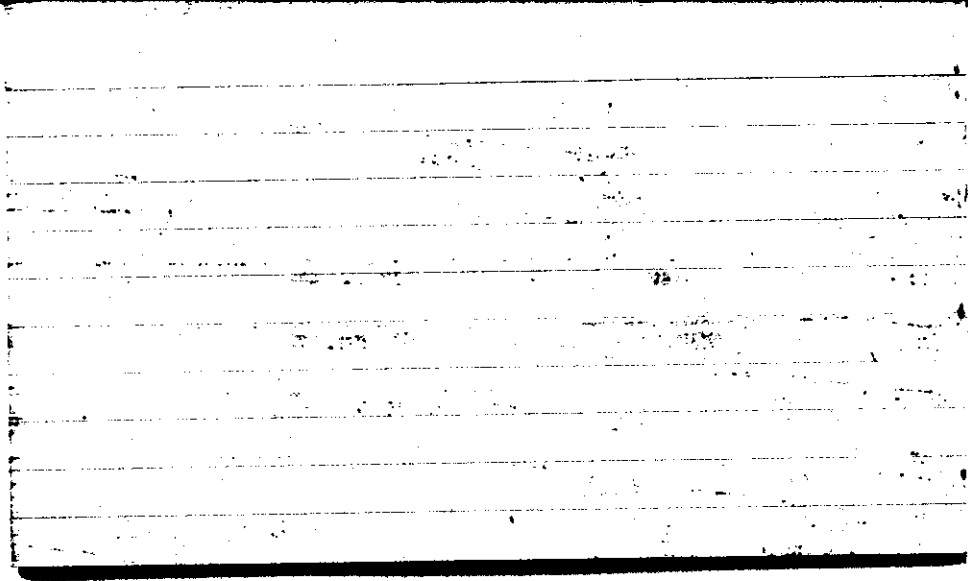
STATE COLLEGE, Pa. Date

OCT - 4 1942

Time

0700

Max. 63	Wind F SW 4	Barom. t 73	General Obs.	
Min. 52	Vis. km. 8	p 28.96	<ul style="list-style-type: none"> • 0755 - 1120 • 1150 - 1230 • 1300 - 1440 • 1530 - 1820 • 1855 - 2000 	
Dry 57	Clouds 10	p(red.) 28.84		
Wet	As St.			
R.H. 91		Morn. Ovc.	Foren. rain ovc	
Precip. — mm/ — in.		Noon rain ovc	Aftern. ovc. rain	
Snowfall/-Depth — in/ — in.		Eve. cldy	Night clear to cldy	
A.M.			0710	

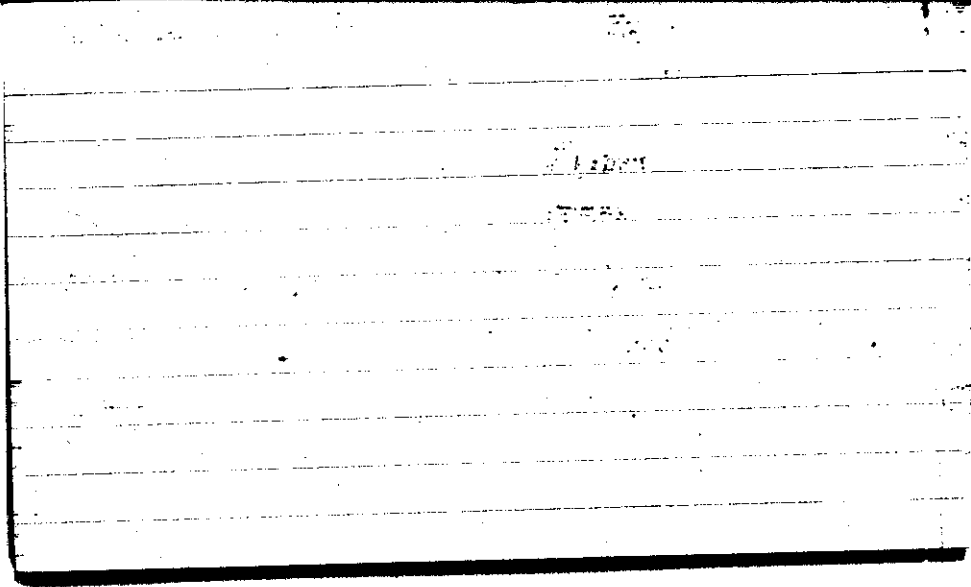


STATE COLLEGE, Pa. Date OCT - 5 1942

Time
0700

Max. 58	Wind F W 3	Barom. t 72	General Obs. Δ 1750-1755	<i>ci fann</i>
Min. 54	Vis. km. 6	p 28.70	0640-0655 °	<i>ci pra</i>
Dry 58	Clouds 9	p(red.) 28.59	1650 R	
Wet	cb, cc ci flocc.		1705-1740 8°	
R.H. 96	Fs		1740-1955 8°	
			2355-2400 8°	
Precip. 1.2 mm / .05 in.		Morn. cldy	Foren. pty cldy	
Snowfall/-Depth — in / — in.		Noon pty cldy	Aftern. cldy	
		Eve. Ove. Thunder Showers	Night cldy Showers	
				0720

AM

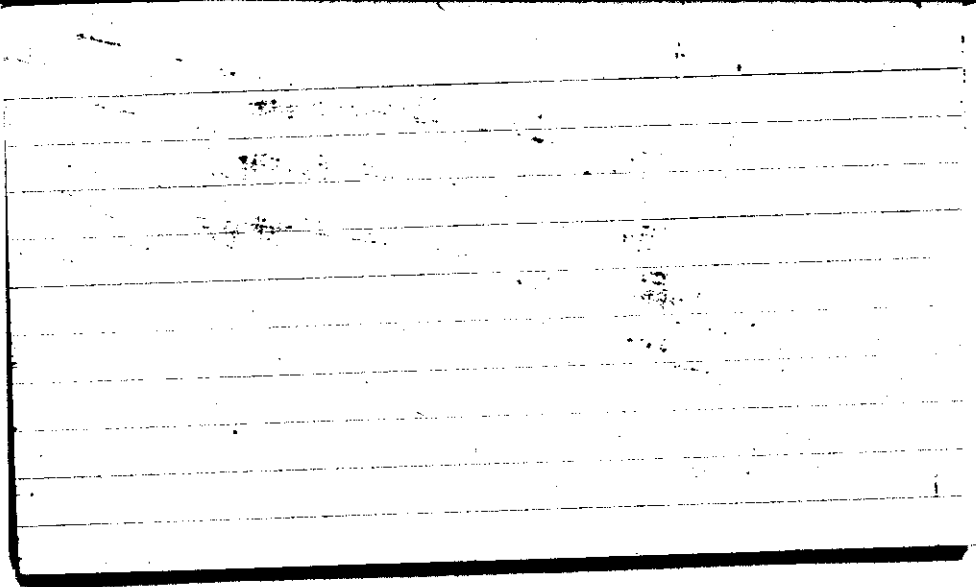


STATE COLLEGE, Pa. Date

OCT - 6 1942

Time
0700

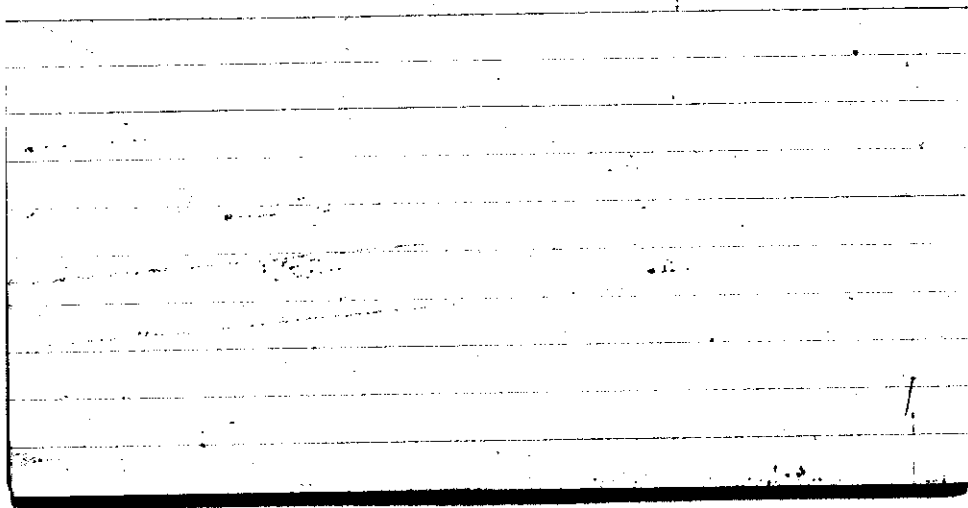
Max. 71	Wind P NW 4	Barom. t 70	General Obs.	
Min. 47	Vis. km. 30	p 28.73	0020-0155 181°	
Dry 47	Clouds 10	p(red.) 28.62	0455-0505 8°	
Wet	Sc		0510-0520 8°	
R.H. 77		Morn. Ovc.	Foren. clry to pty clry	
Precip. 9.0 mm / .35 in.		Noon pty cl	Aftern. fair	
Snowfall/-Depth — in / — in		Eve. Fair	Night Clear	
AM.				



STATE COLLEGE, Pa. Date OCT - 7 1942

Time
0700

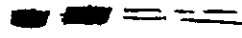
Max. 60	Wind F NW 1	Barom. t 70	General Obs. ∞ ∞'	
Min. 39	Vis. km. 8	p 28.95		
Dry 43	Clouds 1	p (red.) 28.84		
Wet	Cu, Ci, f			
R.H. 78		Morn. Fair	Foren. Fair	
Precip. — mm/ — in.		Noon Fair	Aftern. Pily cldy	
Snowfall/-Depth — in/ — in.		Eve. Fair	Night clear	
AM		0655		



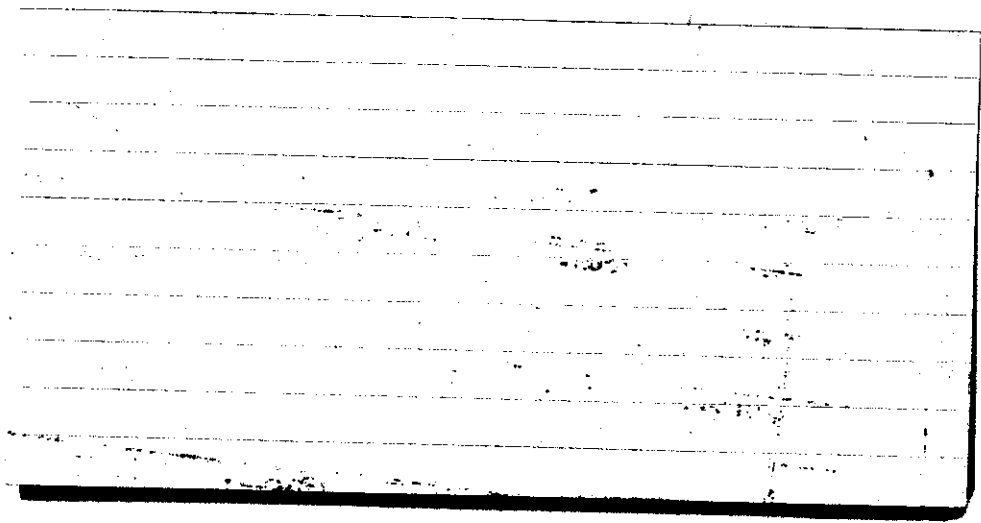
STATE COLLEGE, Pa. Date

OCT - 8 1942

Time
0700

Max. 71	Wind F Calm	Barom. t 71	General Obs. a.  = = =
Min. 42	Vis. km. 8	p 29.13	∞
Dry 47	Clouds X 0	p(red.) 29.02	
Wet			
R.H. 83		Morn. Clear	Foren. Clear
Precip. — mm/ — in.		Noon Clear	Aftern. Clear
Snowfall/-Depth — in/ — in.		Eve. Clear	Night Fair to pth cldy

A.B.

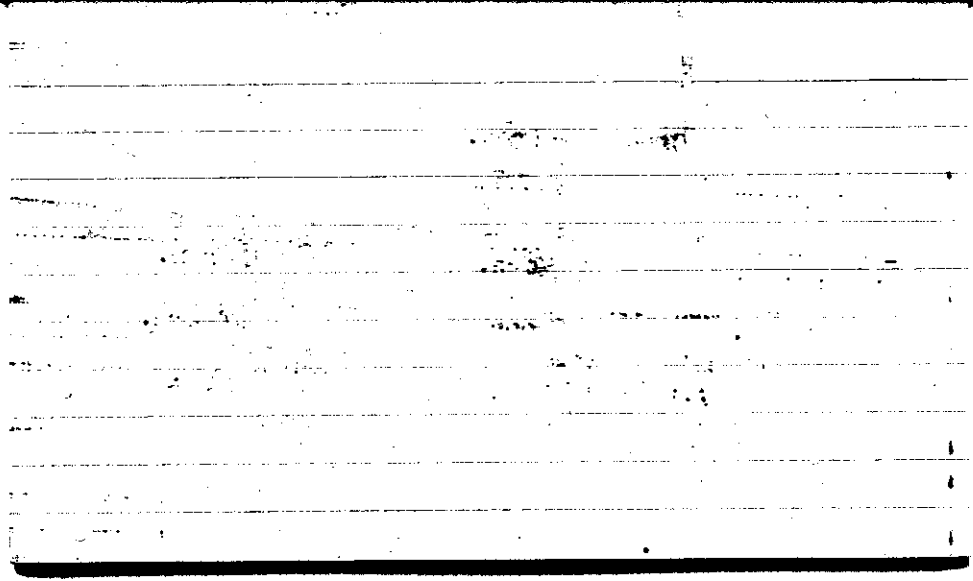


STATE COLLEGE, Pa. Date

OCT - 9 1942

Time
0700

Max. 75	Wind F Calm	Barom. t 76	General Obs. ∞ 2°	0700 (1) - 09. 0700 (2) - 09. 1000 (3) - 09. ci ma ci den.
Min. 46	Vis. km. 12	p 29.08		
Dry 54	Clouds 7	p (red.) 28.96		
Wet	Cs, Ce, Cofil Alto, Cum			
R.H. 80	ci den.	Morn. Pthy. Cldy.	Foren. pty cldy to clear	
Precip. — mm / — in.		Noon cldy	Aftern. cldy	
Snowfall / -Depth — in / — in.		Eve. pty cldy - Fair	Night Fair → Clear	
A.R.				



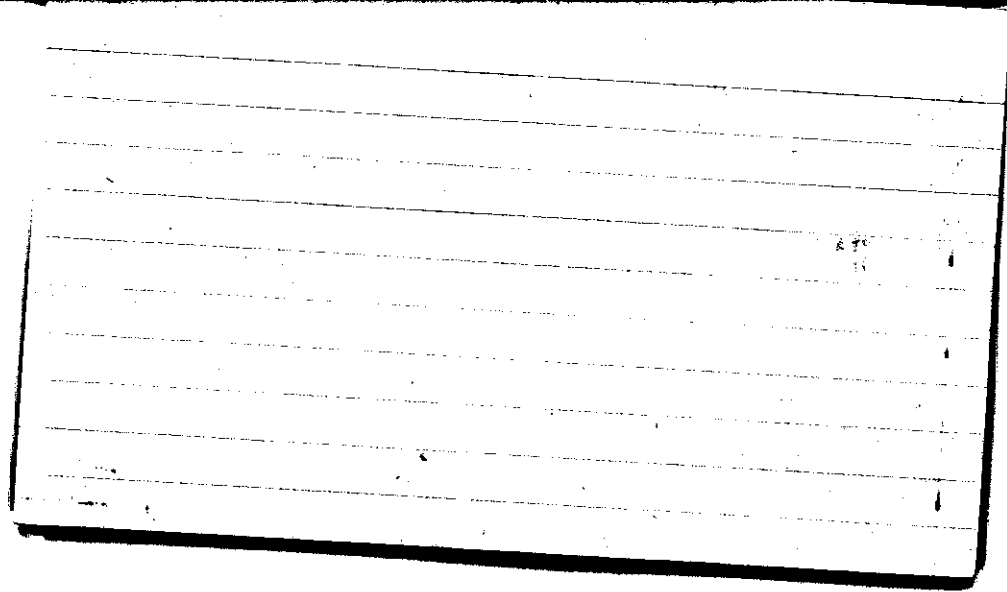
STATE COLLEGE, Pa. Date

OCT 10 1942

Time
0700

Max. 77	Wind F NNE 2	Barom. t 78	General Obs. = 0'
Min. 49	Vis. km. 8	p 29.22	
Dry 50	Clouds 1	p (red.) 29.09	
Wet	Fs, Gunc, Ci fil		
R.H. 96		Morn. Fair	Foren. Fair
Precip. mm/ in.		Noon Fair	Aftern. Fair
Snowfall/-Depth in/ in.		Eve. Fair	Night Fair to 7:14 AM

A.B.

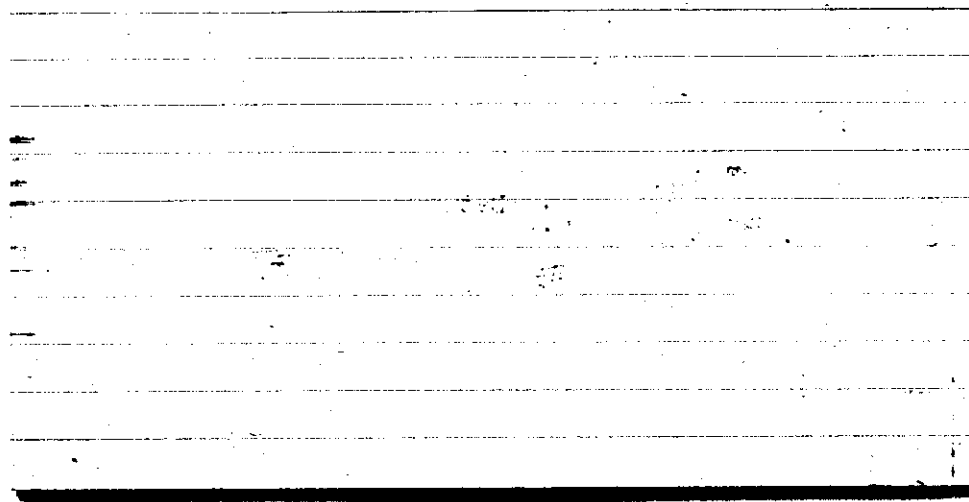


STATE COLLEGE, Pa. Date

OCT 11 1942

Time
0700

Max. 73	Wind F Calm	Barom. t 76	General Obs. ≡ ' 9'	1100 :6: -1230
Min. 47	Vis. km. 1.5	p 28.98		
Dry 47	Clouds Sc, Cc, ci, fil.	p (red.) 28.81		
Wet				
R.H. 96	8	Morn. pty cloudy	Foren. as neb, as fair pty dly	
Precip. / mm / / in.		Noon Fair	Aftern. Fair	
Snowfall / -Depth / in / / in.		Eve. Fair	Night Clear → Fair	
A.C.				

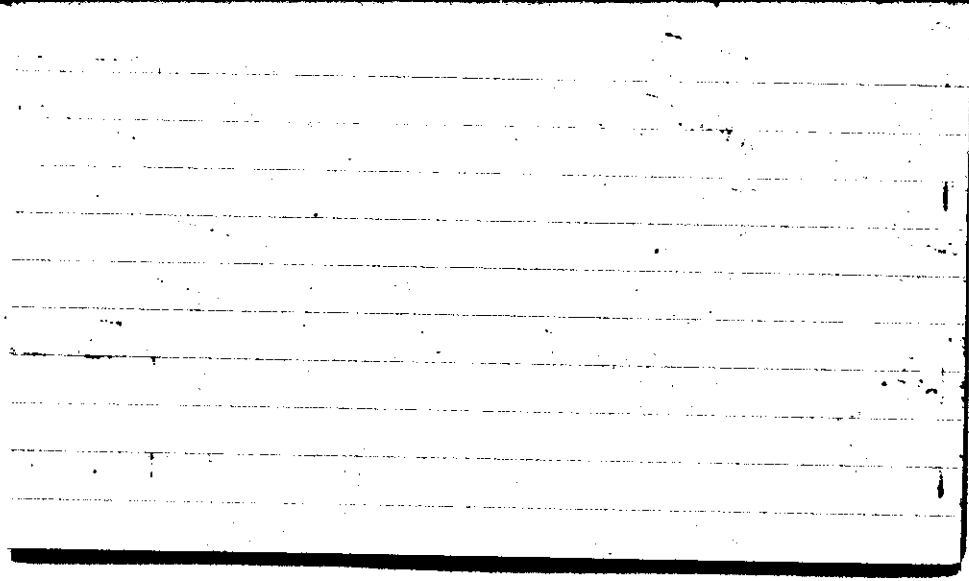


X STATE COLLEGE, Pa. Date OCT 12 1942

Time 0700

Max. 72	Wind F SE 1	Barom. t 74	General Obs. 1100 - 1500 intermittent	
Min. 44	Vis. km. 30	p 29.15		
Dry 45	Clouds 5	p (red.) 29.03		
Wet	C. pro C. cum Cir. C. C. Cirad, C. loc Cs, C. cum Al, Sc, St			
R.H. 92		Morn. Fair → Ptly. Cldy	Foren. Ptly. Cldy	
Precip. — mm / — in.		Noon Ptly. Cldy to Fair	Aftern. Fair	
Snowfall / -Depth — in / — in.		Eve. Ptly. Cldy	Night Ptly. Cldy → Cldy	

A.B.



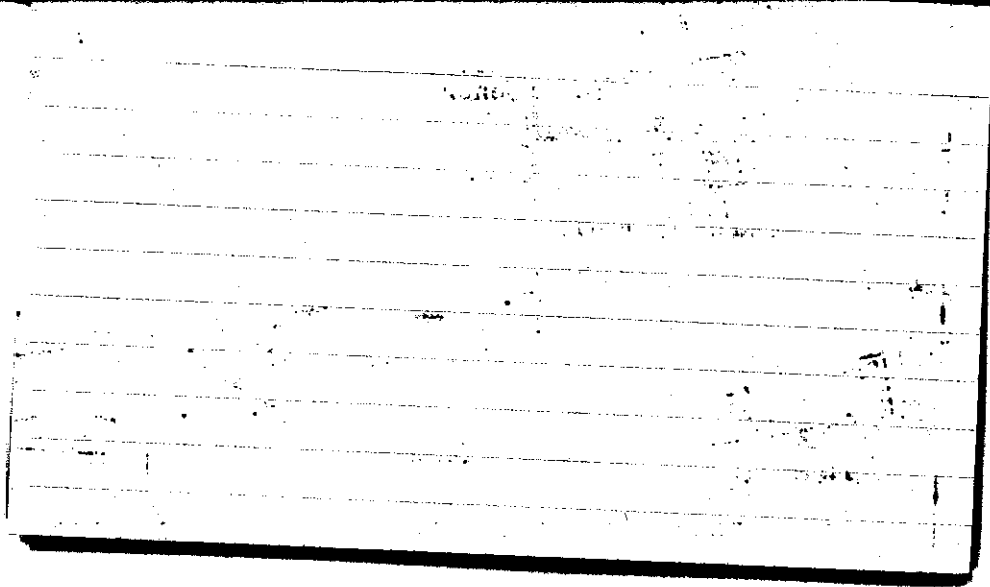
STATE COLLEGE, Pa. Date

OCT 13 1942

Time
0700

Max. 66	Wind F E 2	Barom. t 73	General Obs.	
Min. 45	Vis. km. 2.5	p 29.35	2250 - 2310	•
Dry 49	Clouds 9	p(red.) 29.23	2330 - 2345	•
Wet	Sc, Fs, St As			
R.H. 78	9	Morn. cloudy	Foren. cldy	
Precip. — mm/ — in.		Neon cldy	Aftern. ovcast.	
Snowfall/-Depth — in/ — in.		Eve. ovc.	Night ovc rain	

HL



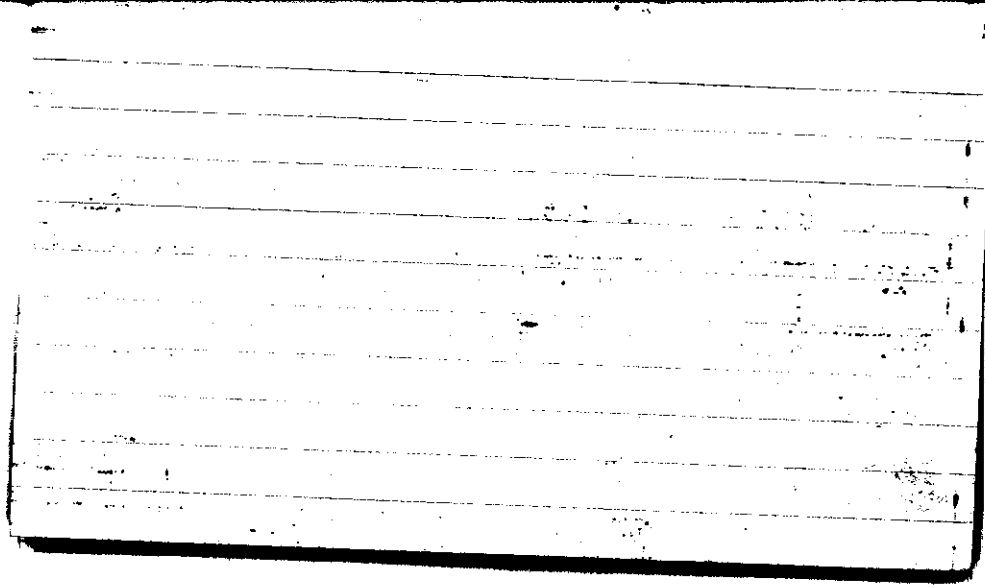
STATE COLLEGE, Pa. Date

OCT 14 1942

Time
0200

Max.	Wind F	Barom.	General Obs.
59	E 2	t 72	.
Min. 49	Vis. km. 1.5	p 29.18	0000-0230 ● ^o
Dry 53	Clouds 10	p(red.) 29.06	0355-0400 ● ^o
Wet	Ns		0920-1220 ● ^o
			1350-1430 ● ^o
			1615-1900 101 ^o
			1955-2400 5 ^o
R.H. 96		Morn. Overst - Rainy	Foren. Over., Rainy
Precip. 4.9 mm / .20 in.		Noon Over., Rain	Aftern. Over., Rain
Snowfall / -Depth — in / — in.		Eve. Over., Rain	Night Over., Rain

H.B.



STATE COLLEGE, Pa. Date

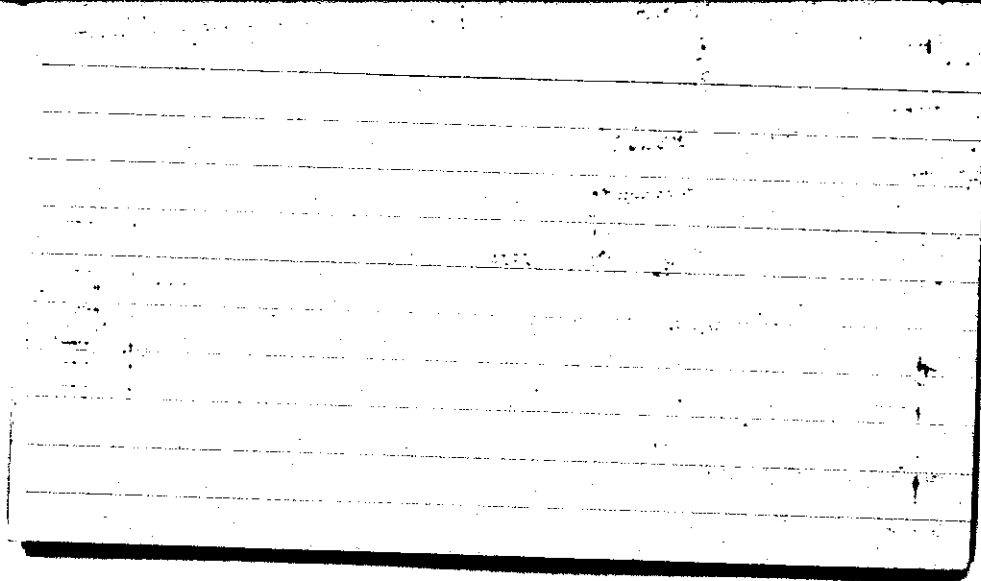
OCT 15 1942

Time
0700

Max. 59	Wind F E 2	Barom. t 72	General Obs.	
Min. 52	Vis. km. 8	p 28.95	° 0000-0350 ° 0405-0605 ° 0630-0800 101° 0830-1020 ° 1040-1520 ° 1520-1810 ° 1810-2005 12° 2200-2400	
Dry 59	Clouds 10	p (red.) 28.84		
Wet	Ns, Fs			
R.H. 97		Morn. Ovc., Raining	Foren. Ovc., Raining	
Precip. 28.6 mm / 1.12 in.		Noon Ovc., Raining	Aftern. Ovc., Raining	
Snowfall / -Depth		Eve. Ovc., Raining	Night Ovc., Raining	
— in / — in.				

A.M.

0725



STATE COLLEGE, Pa. Date

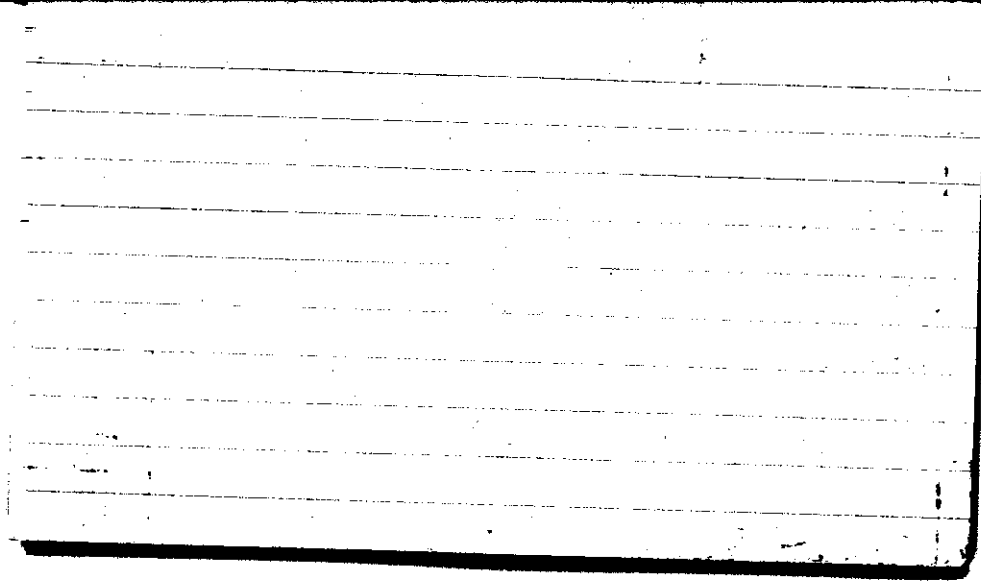
OCT 16 1942

Time
0700

Max. 63	Wind F NE 3	Barom. t 73	General Obs.	9 0000-0030 9 0110-0115 10 0230-0425 9 0800-1005 8 1005-1020 9 1020-1120 9 1120-1215 9 1215-1430 9 1525-1535
Min. 58	Vis. km. 7	28.90	• 1545-1720 • 1720-1745 • 1745-1815 • 2015-2035 • 2345-2400	
Dry 61	Clouds 10	p(red.) 28.78		
Wet	As, Fs			
R.H. 97		Morn. Ovc., Rain	Foren. Ovc., Rain	
Precip. 14.6 mm / 0.57 in.		Noon Ovc., Rain	Aftern. Ovc., Rain	
Snowfall/-Depth — in / — in.		Eve. Ovc., Rain	Night Ovc., Rain	

AM

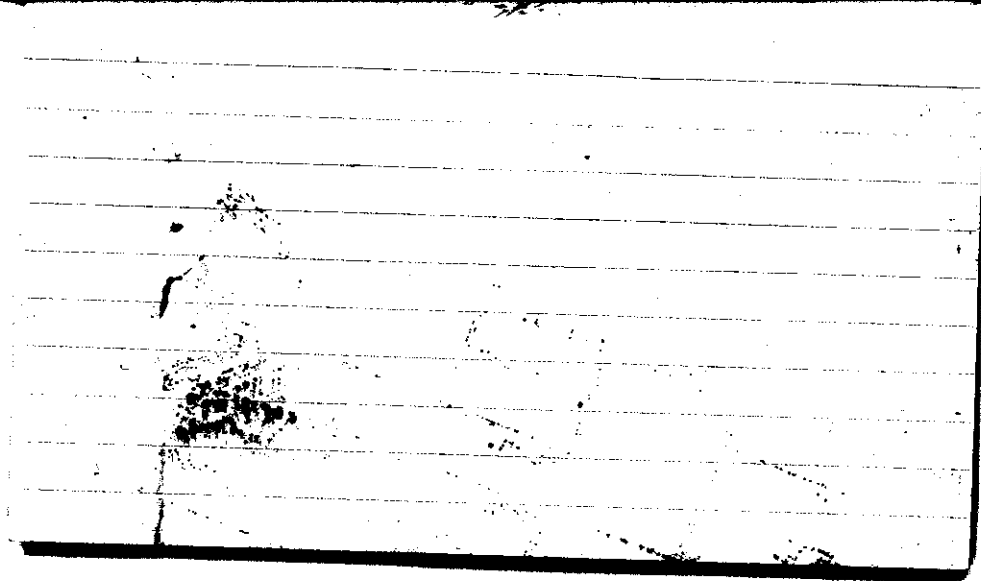
0805



STATE COLLEGE, Pa. Date OCT 17 1942

Time
0700

Max. 63	Wind F SE 1	Barom. 73	General Obs. 00	2° 0000-0015 191° 0015-0000 ° 0100-0240 ° 0255-0350 ° 2150-2155
Min. 55	Vis. km. 6	28.90		
Dry 55	Clouds 9	p (red.) 28.78		
Wet	As, Fs			
R.H. 98		Morn. cldy → Ovc.	Foren. cldy	
Prebip. 4.1 mm / 0.16 in.		Noon cldy	Aftern. cldy	
Snowfall/-Depth — in / — in.		Eve. cldy rain to ovc	Night cldy	
A.M.				0812

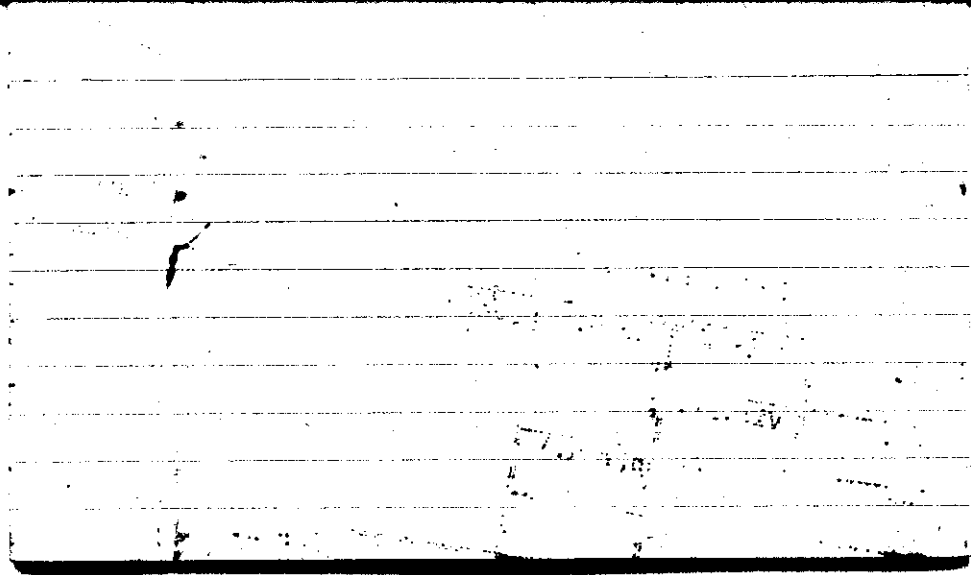


STATE COLLEGE, Pa. Date OCT 18 1942

Time


0700

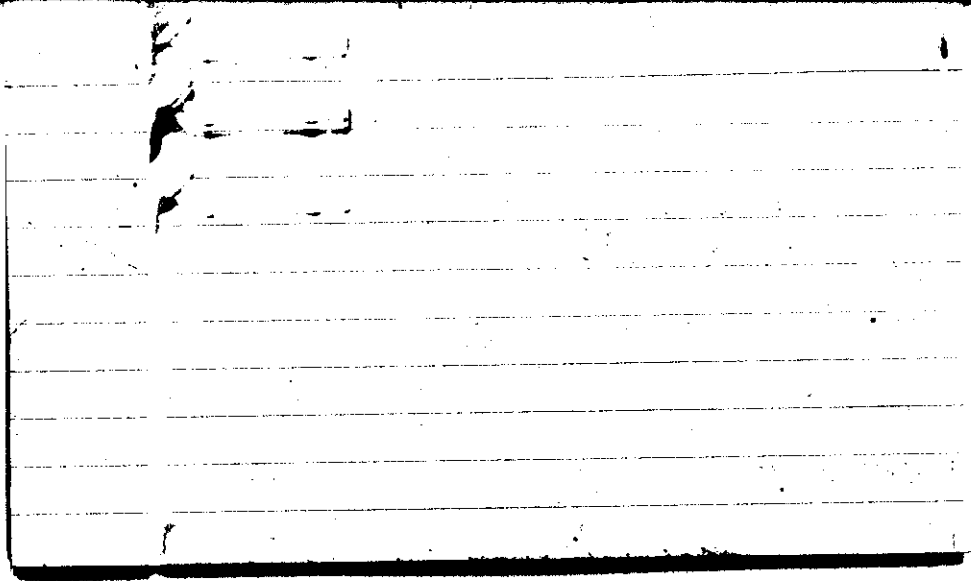
Max. 65	Wind F NW 3	Barom. t 71	General Obs.	H ^o 0030-0100 0155-0200 0330-0410
Min. 52	Vis. km. 20	p 28.78		
Dry 53	Clouds 8	p(red.) 28.67		on plane in pt.
Wet	F, W, Sc			
R.H. 80		Morn. Ptlly cldy → cldy	Foren. Fair	
Precip. T mm / T in.		Noon Ptlly cldy	Aftern. Ptlly cldy	
Snowfall/-Depth — in / — in.		Eve. Fair	Night Fair	
AM				0730



STATE COLLEGE, Pa. Date **OCT 19 1942**

Time
0700

Max. 64	Wind F WSW 3	Barom. t 66	General Obs. α' =
Min. 41	Vis. km. 7	28.71	10 15:30
Dry 42	Clouds X	p(red.) 28.61	0 15:50
Wet			
R.H. 81		Morn. <i>Clear</i>	Foren. <i>clear to fair</i>
Precip. — mm/ — in.		Noon <i>fair</i>	Aftern. <i>Fair</i>
Snowfall/-Depth — in/ — in.		Eve. <i>Fair</i>	Night 
AM			0645

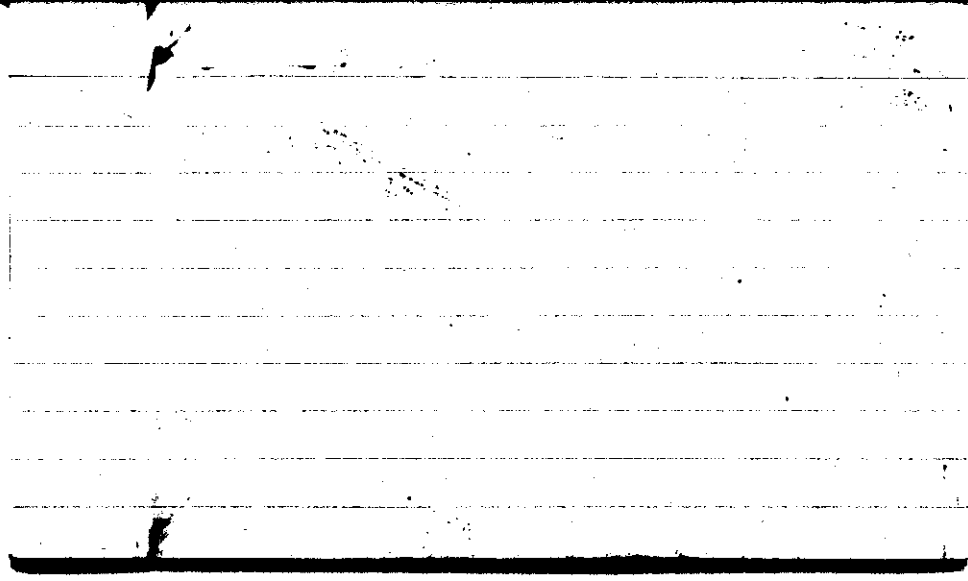


STATE COLLEGE, Pa. Date

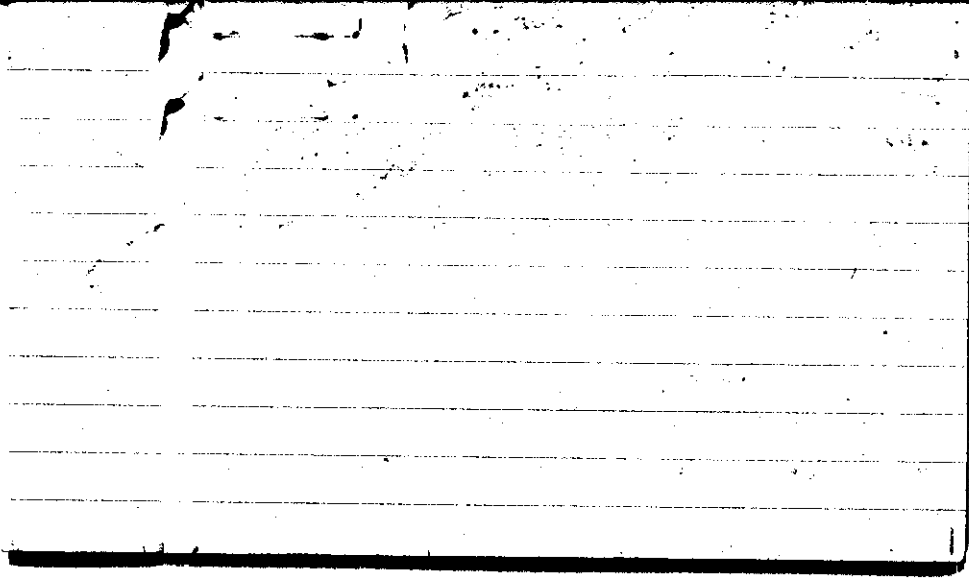
OCT 20 1942

Time
0700

Max. 62	Wind F WSW 1	Barom. t 65	General Obs. 0' = ' U'	
Min. 37	Vis. km. 4	D 28.78		
Dry 40	Clouds X	p(red.) 28.69		
Wet				
R.H. 85		Morn. Foggy, Clear	Foren. Clear	
Precip. — mm/ — in.		Noon Clear	Aftern. Clear	
Snowfall/-Depth — in/ — in.		Eve. Fair	Night Fair	
AM			0645	



Max. 66	Wind P NE 2	Barom. t 67	General Obs. = Ω
Min. 39	Vis. km. 7	28.66	•° 1020-1100 •° 1530-1640 •° 1740-1820 •° 2250-2320
Dry 44	Clouds 9	p(red.) 28.56	<i>ie from c/fc</i>
Wet	As, Ac		
R.H. 87		Morn. <i>Cldy,</i>	Foren. <i>Ovc., Rain</i>
Precip. — mm/ — in.		Noon <i>Ovc., Rain</i>	Aftern. <i>Ovc., Rain</i>
Snowfall/-Depth — in/ — in.		Eve. <i>Ovc., Rain</i>	Night <i>ptly cldy</i>
<i>AM</i>			<i>0645</i>

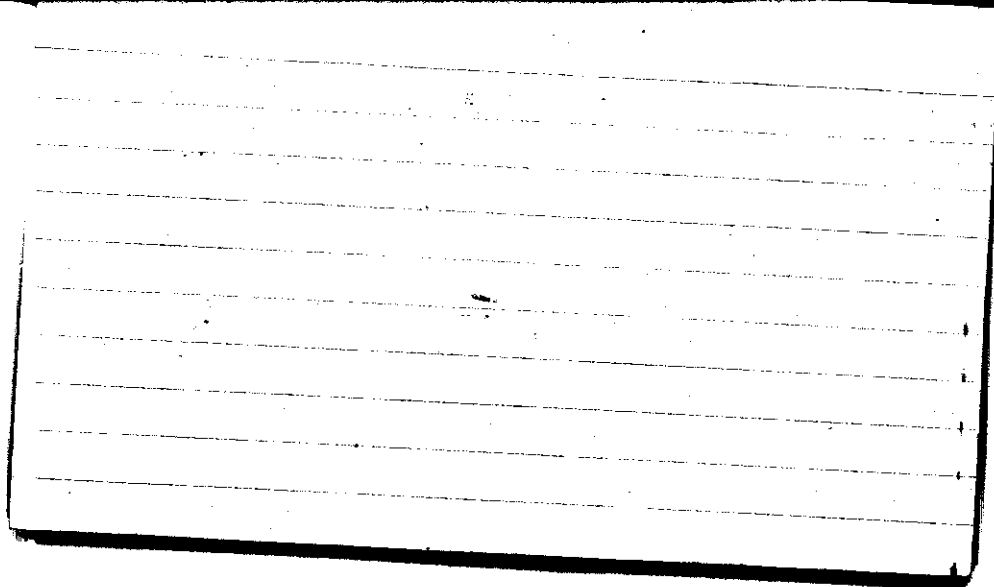


STATE COLLEGE, Pa. Date

OCT 22 1942

Time
0700

Max. 59	Wind P W3	Barom. t 68	General Obs. ∞	ci pot. ci fover
Min. 42	Vis. km. 8	28.46	•• 0100-0130	•• 1500-1540
Dry 50	Clouds 4	p(red.) 28.36	•• 0305-0330	
Wet	As, Ac, Fc		•• 0435-0445	
R.H. 70		Morn. pty cldy	Foren. pty cldy	
Precip. 6.0 mm / .24 in		Noon pty cldy → cldy	Aftern. cldy	
Snowfall/-Depth — in / — in		Eve. cldy	Night cldy → overcast	
A.B.				0738



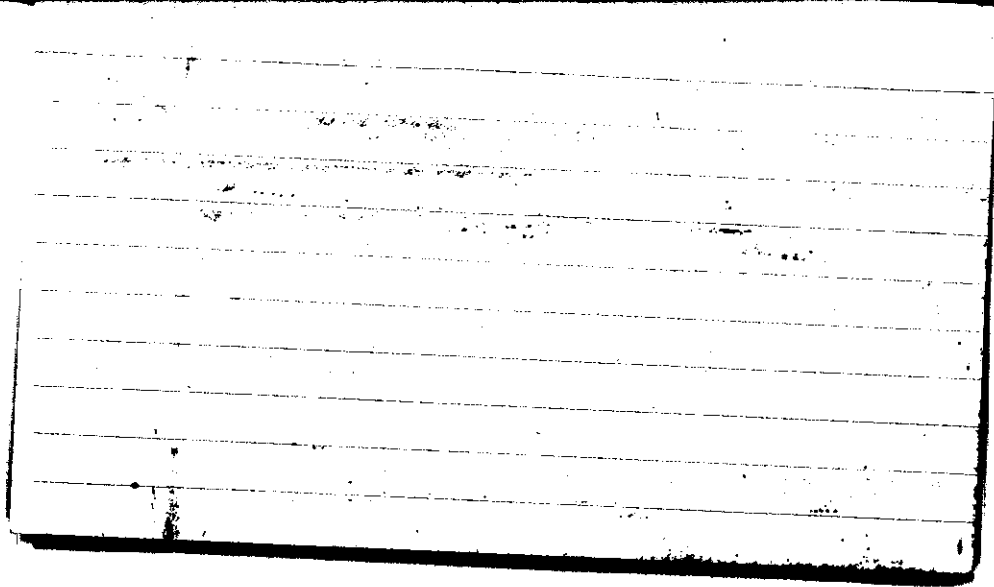
STATE COLLEGE, Pa. Date

OCT 23 1942

Time

0700

Max. 62	Wind F W 2	Barom. t 67	General Obs. c' from • 0325 - 0335 • 0515 - 0600 0655
Min. 48	Vis. km. 10 Km	28.61	
Dry 48	Clouds Ns	p(red.) 28.51	
Wet	10		
R.H. 90		Morn. Rain - ovcast	Foren. pty clay - clay
Precip. 0.6 mm / 0.02 in.		Noon pty clay - clay.	Aftern. clay
Snowfall / -Depth — in / — in		Eve. clay	Night clay → pty clay
A.B.			0715



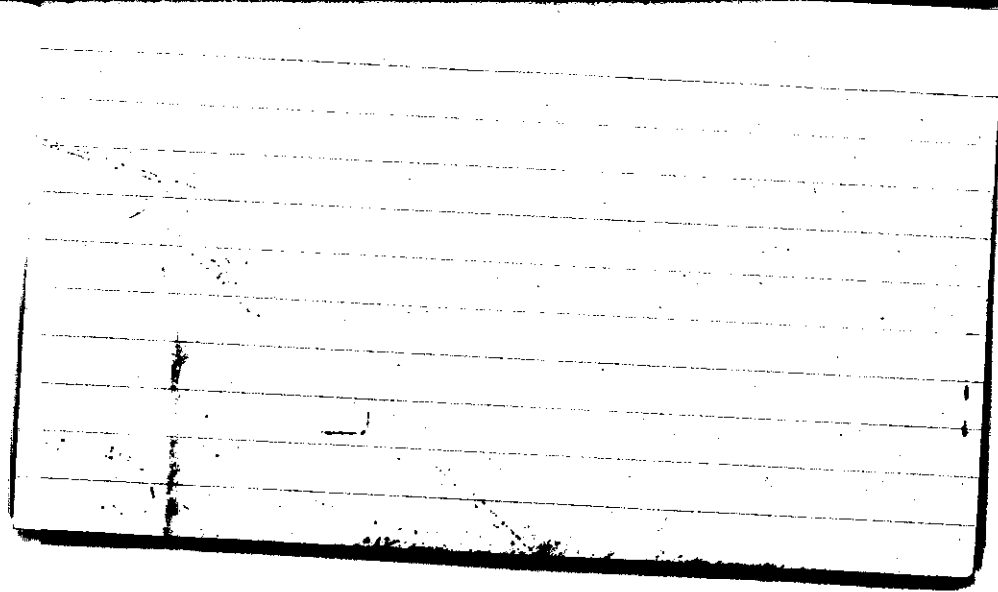
STATE COLLEGE, Pa. Date

OCT 21 1942

Time
0700

Max. 53	Wind S W 1	Barom. t 64	General Obs. ∞	Q fil ce a pol a wind
Min. 40	Vis. km. 11	29.01		
Dry 41	Clouds 7	p(red.) 28.92		
Wet	Ac			
R.H. 71		Morn. pty cldy	Foren. pty cldy → Fair	
Precip. — mm/ — in.		Noon pty cldy → fair	Aftern. fair	
Snowfall/—Depth — in/ — in.		Eve. fair	Night fair → pty cldy → cldy	

H.B

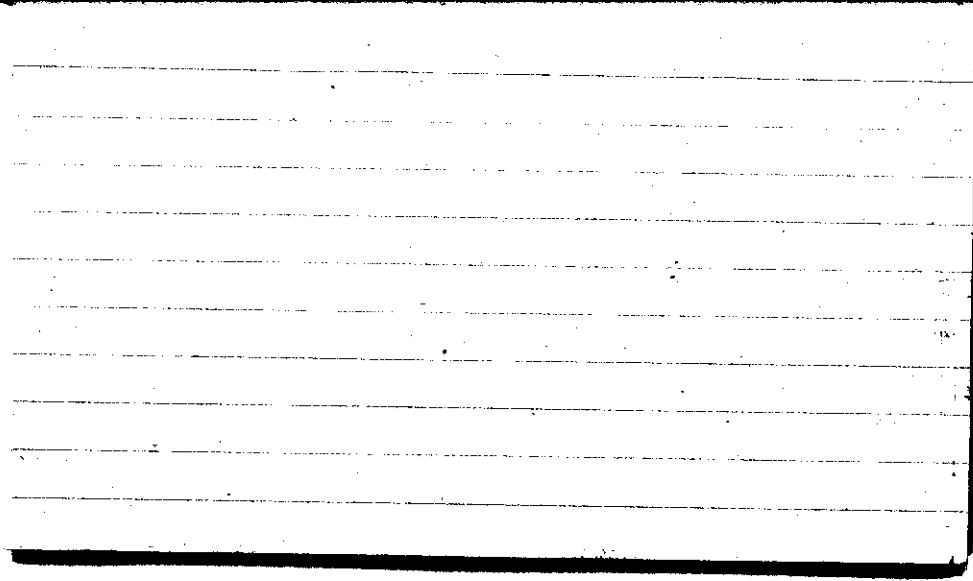


STATE COLLEGE, Pa. Date

OCT 25 1942

Time
0700

Max. 58	Wind P Calm	Barom. t 64	General Obs. ∞	a' d'm cc a' p'm.
Min. 40	Vis. km. 15	p 29.00	1930 ° - 1930 1955 ° - 2010	
Dry 45	Clouds 9	p(red.) 28.80	2050/° - 2250	
Wet	Sc			
R.H. 73		Morn. Cldy.	Foren. Pth Cldy → Cldy	
Precip. — mm / — in.		Noon Cldy	Aftern. overst.	
Snowfall/-Depth — in / — in.		Eve. overst.	Night overst - Rain	
A. B.				

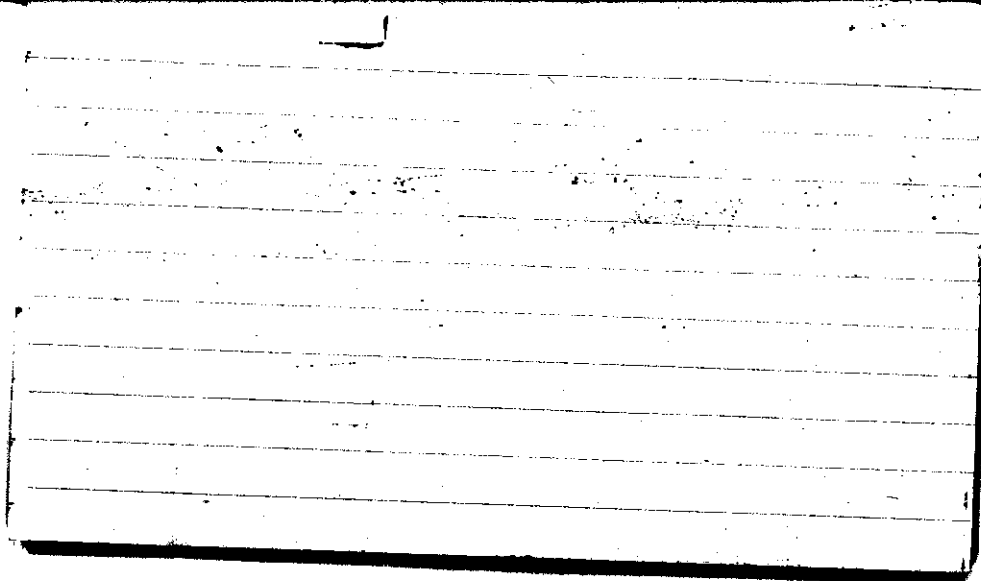


STATE COLLEGE, Pa. Date

OCT 25 1942

Time
0700

Max. 59	Wind F NW 4	Barom. t 64	General Obs. 0220 - 0330 0415 - 1400 0650 - 1700	NW 30 mph
Min. 45	Vis. km. /	28.60		
Dry 48	Clouds 10	p(red.) 28.51		
Wet 5	NS			
R.H. 91		Morn. overcast - Rain	Foren. overcast - Rain	
Precip. 10.0 mm / .39 in.		Noon overcast - Rain	Aftern. overcast - Rain → cloudy	
Snowfall/-Depth — in / — in.		Eve. cloudy	Night cloudy → Fair	
A.B			0719	

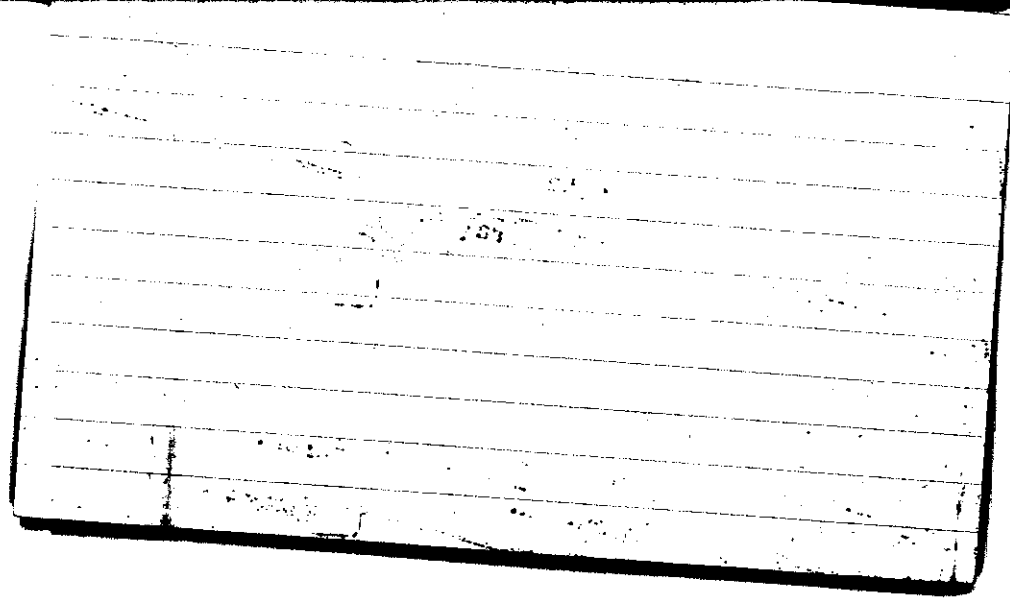


STATE COLLEGE, Pa. Date

OCT 27 1942

0700

Max. 48	Wind F W 4	Barom. t 65	General Obs. L	NW 40 mph
Min. 27	Vis. km. 10 Km	28.65		
Dry 27	Clouds Fc, Ac	p(red.) 28.56		
Wet	/			
R.H. 51		Morn. Fair	Foren. cldy	
Precip. 8.6 mm / .34 in.		Noon Ptlly cldy	Aftern. Ptlly cldy-cldy	
Snowfall/-Depth - in / - in.		Eve. cldy-ptly cldy	Night Ptlly cldy → Clear	
A.B.			0920	

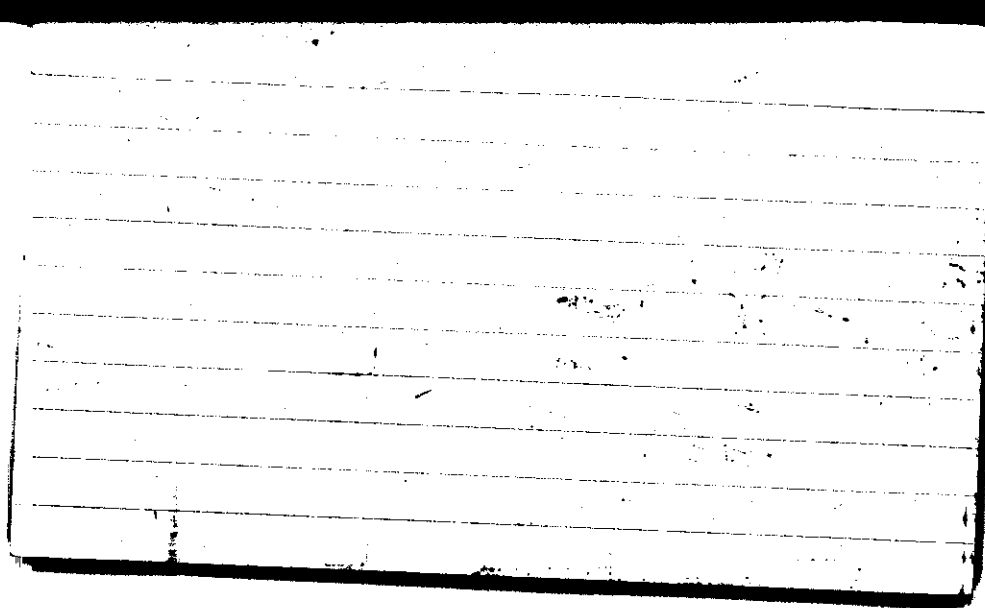


STATE COLLEGE, Pa. Date

OCT 28 1942

Time
0700

Max. 38	Wind F WSW 2	Barom. t 65	General Obs. L. ∞
Min. 27	Vis. km. 10	p 29.00	
Dry 29	Clouds X	p (red.) 28.90	
Wet.			
R.H. 84		Morn. Clear	Foren.
Precip. — mm/ — in.		Noon	Aftern.
Snowfall/-Depth — in/ — in.		Eve.	Night
F. 3.			

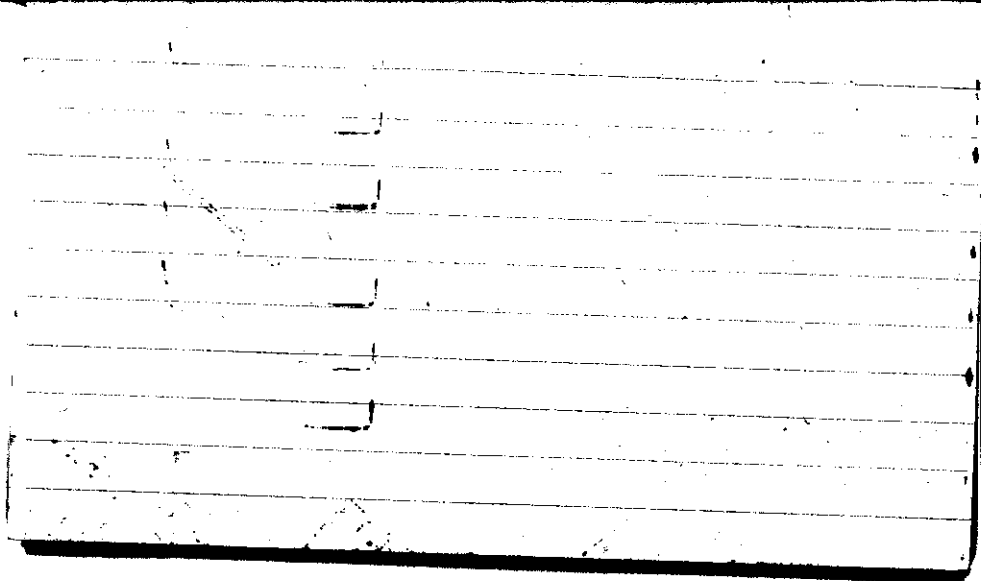


STATE COLLEGE, Pa. Date

OCT 29 1942

Time
0700

Max. 53	Wind F NE 1	Barom. t 69	General Obs. 0° ∞	0930 - 1030
Min. 29	Vis. km. 15	29.17		0100 - 0120
Dry 37	Clouds 7	p(red.) 29.06		
Wet	Ac, As Ci, Al, Cs, Cc, Ci, pr.			
R.H. 79		Morn. Ptlly cldy Hazy	Foren. cldy Hazy	
Precip. — mm/ — in.		Noon cldy	Aftern. Ptlly cldy cldy	
Snowfall/-Depth — in/ — in.		Eve. Ptlly cldy	Night Fair	
A.M.				0100



STATE COLLEGE, Pa. Date

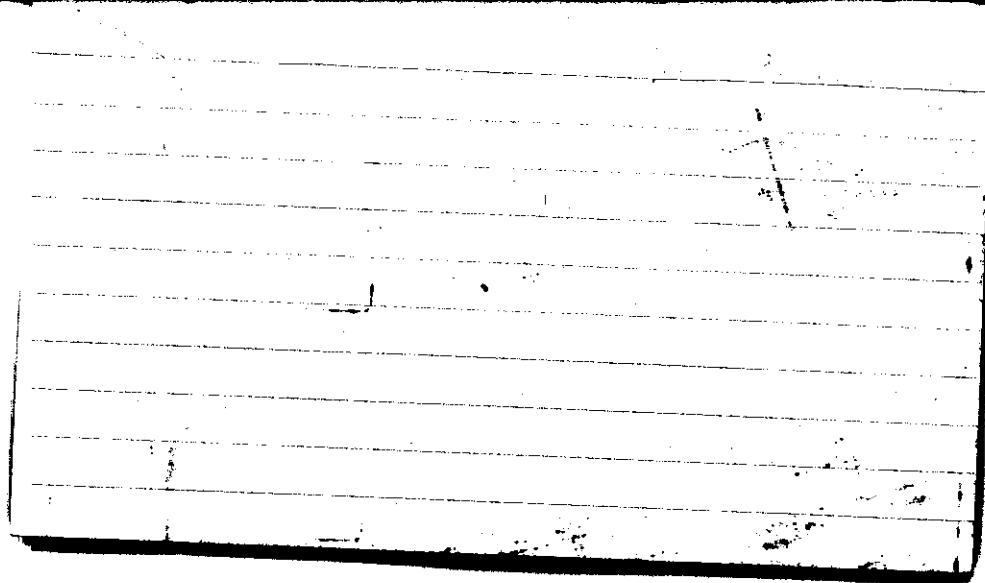
OCT 30 1942

Time
0700

Max. 59	Wind P SW 2	Barom. t 70	General Obs. 0°
Min. 35	Vis. km. 20	p 29.12	
Dry 47	Clouds 1	p(red.) 29.01	
Wet	Ac		
R.H. 78		Morn. Fair	Foren. fair ci fl ci perc
Precip. — mm/ — in.		Noon Fair	Aftern. cldy
Snowfall/-Depth — in/ — in.		Eve. Fair	Night Fair

AM.

0650



STATE COLLEGE, Pa. Date

OCT 31 1942

Time

0700

Max. 66	Wind F SW 2	Barom. t 71	General Obs. 0750 es 2m 1040 0-1130
Min. 46	Vis. km. 25	28.89	
Dry 56	Clouds 6	p(red.) 28.78	
Wet	Ac		15-200
R.H. 83		Morn. pty cldy	Foren. pty cldy
Precip. — mm / — in		Noon pty cldy → cldy	Aftern. pty cldy → cldy Cs, Ci unc., Cc
Snowfall/-Depth — in / — in		Eve. cldy	Night cldy - Rain
AM.			0645

