

STATE COLLEGE, Pa. Date **APR 1 1941**Time  
7:03

Max. 54.1	Wind F N 2	Barom. t 75.0	General Obs. 7:10 $\equiv^{\circ}$ 7:10 $\downarrow$ -17 <sup>15</sup> $\circ$ / 8 <sup>15</sup> $\circ$
Min. 27.7	Vis. km. 3 $\equiv^{\circ}$	E 28.64	$\equiv^{\circ}$ (6-8:30)
Dry 38.7	Clouds 6	p(red.) 28.52	
Wet	ci co		
R.H. 96		Foren. <i>fair light fog</i>	Foren. <i>ptly cloudy</i>
Precip. in/	in/	Moon <i>cloudy</i>	Moon <i>cloudy to thin overcast</i>
Snowfall/ in/	-Depth in/	Eve. <i>overcast</i>	Night <i>overcast</i>



STATE COLLEGE, Pa. Date

APR 2 1941

Time

7:02

Max.	Wind F	Barom.	General Obs.
57.5	N 6	t 77.0	
Min.	Vis. km.	P	
32.0	35	28.71	
Dry	Clouds	(red.)	
34.1	acc lent	28.58	
Wet	ci		
R.H.	56	Forep.	fair to clear
Precip.	mm/ in.	Aftern.	clear to fair
		noon	clear to fair
Snowfall/Depth	in/ in.	Even.	" " "
		night	clear
			fair to clear

1  
 2  
 3  
 4  
 5  
 6  
 7  
 8  
 9  
 10  
 11  
 12  
 13  
 14  
 15  
 16  
 17  
 18  
 19  
 20  
 21  
 22  
 23  
 24  
 25  
 26  
 27  
 28  
 29  
 30  
 31  
 32  
 33  
 34  
 35  
 36  
 37  
 38  
 39  
 40  
 41  
 42  
 43  
 44  
 45  
 46  
 47  
 48  
 49  
 50  
 51  
 52  
 53  
 54  
 55  
 56  
 57  
 58  
 59  
 60  
 61  
 62  
 63  
 64  
 65  
 66  
 67  
 68  
 69  
 70  
 71  
 72  
 73  
 74  
 75  
 76  
 77  
 78  
 79  
 80  
 81  
 82  
 83  
 84  
 85  
 86  
 87  
 88  
 89  
 90  
 91  
 92  
 93  
 94  
 95  
 96  
 97  
 98  
 99  
 100

-12  
 -11  
 -10  
 -9  
 -8  
 -7  
 -6  
 -5  
 -4  
 -3  
 -2  
 -1  
 0  
 1  
 2  
 3  
 4  
 5  
 6  
 7  
 8  
 9  
 10  
 11  
 12  
 13  
 14  
 15  
 16  
 17  
 18  
 19  
 20  
 21  
 22  
 23  
 24  
 25  
 26  
 27  
 28  
 29  
 30  
 31  
 32  
 33  
 34  
 35  
 36  
 37  
 38  
 39  
 40  
 41  
 42  
 43  
 44  
 45  
 46  
 47  
 48  
 49  
 50  
 51  
 52  
 53  
 54  
 55  
 56  
 57  
 58  
 59  
 60  
 61  
 62  
 63  
 64  
 65  
 66  
 67  
 68  
 69  
 70  
 71  
 72  
 73  
 74  
 75  
 76  
 77  
 78  
 79  
 80  
 81  
 82  
 83  
 84  
 85  
 86  
 87  
 88  
 89  
 90  
 91  
 92  
 93  
 94  
 95  
 96  
 97  
 98  
 99  
 100

STATE COLLEGE, Pa. Date **APR 3 1941**

Time  
0700

Max. 52.9	Wind F SW 7	Barom. t 28.0	General Obs. 1.00 W' 2
Min. 29.4	Vis. km. 15	P 29.97	
Dry 33.8	Clouds ' ci	o (red.) 29.84	
Wet			
R.H. 78		Morn. <i>fair</i>	Foren. <i>fair</i>
Precip. mm/ in.		Noon "	Aftern. "
Snowfall/ - Depth in/ in.		Eve. " $\frac{5}{10}$ ci	Night

2-  
5-  
3-  
3-  
4-  
1-  
7-  
1-  
1-  
0-  
3-  
2-

hydroxy (13) - 19 + 11 30  
- 8  
- 10.6  
2 3

APR 4 1941

3755

Max. 60.0	Wind F E 1	Barom. t 78.0	General Obs. 630 <del>000</del> - 7h 11 8 <sup>h</sup> 0.1
Min. 33.9	Vis. km. 25	P 28.95	12:00 / 12 <sup>h</sup> 0 - 12:00
Dry 38.9	Clouds "	S (red.) 28.82	☉ at 18:20 ☉ 19 <sup>h</sup> 24:00
Wet	acu ci, ci flre ci fil		
R.H. 74	acu cast	Foren. fair	Foren. ptly cloudy to fair
Precip. mm/ in.		Noon 7:30/10:00 ptly cloudy to fair	Aftern. ptly cloudy to cloudy
Snowfall / - Depth in/ in.		Eve. overcast light rain	Night overcast moderate rain

7  
7  
4  
3  
2  
1  
2

Imaginary (8) - 6 + 12 18  
+ 6  
+ 0.8 2.2



STATE COLLEGE, Pa. Date **APR 5 1941**

Time  
7:06

Max. 59.0	Wind F E 4	Barom. 27.3	General Obs. 0:00-2400 ☉	
Min. 28.3	Vis. km. 3	28.66		
Dry 34.4	Clouds 10	(red.) 28.53		
Wet	not			
R.H. 97	Foren. overcast, moderate rain	Foren. overcast, mod. rain		
Precip. 13.7 mm/0.54 in	Noon " light rain	Aftern. " lgt. rain		
Snowfall/-Depth in/ in	Eve. " "	Night " "		

			9
			0
			-1
			0
			3
			0
			1
			2
			0
			-1
			0
		2	-3
		-1	1
		-2	2
		0	-1
		6	0
		-3	0
		0	0
		-1	3
9	1	2	0
-	-	0	-
26	20	46	92
1.6			

STATE COLLEGE, Pa. Date

APR 5 1944

Time  
(3:0)

Max.	Wind F NE 4	Barom. t	General Obs.
Min.	Vis. km. 6	P	
Dry 41.0	Clouds 10 ☉	p (red.)	
Wet	msb		
R.H.		Morn.	Foren.
Precip. 8.3 mm/ in.		Noon	Aftern.
Snowfall/-Depth in/ in.		Eve..	Night

-12

-21 +9 -30

-1.1 2.7

STATE COLLEGE, Pa. Date **APR 5 1941**

Time **19:00**

Max.	Wind F <b>NNE 3</b>	Barom. t	General Obs.	
Min.	Vis. km. <b>4</b>	p		
Dry <b>37.6</b>	Clouds <b>10 0°</b>	b (red.)		
Wet	<b>ns†</b>			
R.H.		Morn.	Foren.	
Precip. <b>9.5</b> mm/ in.		Noon	Aftern.	
Snowfall/-Depth in/ in.		Eve.	Night	

-20

Uccole (25) -26 + 6 32                      -0.8 1.3

0	-1		
-2	0		
-1	0		
-2	-1		
-1	-1		
5			
1			
-2			
0			
0			
-1			
0			
0			
-1			
0			
-2			
0			
-6			
-4			
-1			

STATE COLLEGE, Pa. Date

APR 6 1941

Time  
6:57

Max. 42.1	Wind F N 4	Barom. t 25.0	General Obs.	
Min. 35.7	Vis. km. 8	p 28.61	☉° 0:00 - 8:40	
Dry 36.1	Clouds 10 7	p (red.) 28.49	8:20 Δ - 8:22	
Wet	hst		☉° 12:54 - 12:56	
R.H. 97		Foren. overcast, lgt rain	Foren. overcast, lgt. rain	
Precip. 10.3 mm / 0.41 in.		Noon " , showers	Aftern. cloudy to pthly cloudy	
Snowfall / - Depth in / in		Eve. fair to clear	Night clear	

Handwritten notes on lined paper, including a vertical line and some illegible text.

0.5 0.5

8 - 8 -

8 -

2 -



STATE COLLEGE, Pa. Date APR 6 1941

Time  
1300

Max.	Wind F NE 4	Barom. t	General Obs.	
Min.	Vis. km. 20	p		
Dry 43.9	Clouds 10	p (red.)		
Wet	sc fr. cu.			
R.H. 87		Morn.	Foren.	
Precip. mm/ in.		Noon	Aftern.	
Snowfall/-Depth in/ in.		Eve.	Night	

-7

Victoria (7) -14 +7 21 -1.0 3.0

-4  
-2  
-5  
-6  
1  
2

STATE COLLEGE, Pa. Date **APR 7 1941**

Time  
**7:52**

Max. 49.0	Wind F E 1	Barom. 75.0	General Obs. 7:00 L <sup>2</sup> ∞°
Min. 32.0	Vis. km. 4	p 28.98	
Dry 35.6	Clouds 0 ∞	p (red.) 28.86	
Wet			
R.H. 71	Foren. clear	Foren. clear	
Precip. 0.1 cm / 1 in	Noon "	Aftern. "	
Snowfall / -Depth in / in	Eve. "	Night "	

					1
					0
					0
					1
					1
					-1
					0
					0
					1
					0
					-1
					-1
					7
					1
					-1
					-2
					-1
					-2
					-1
					8
					-5
					0
<b>Horizontal</b>					
(25) - 20 + 12					
32	-0.3	1.3			

STATE COLLEGE, Pa. Date APR 7 1941

Time  
1901

Max. 62.6	Wind F. E 2 kt	Barom.	General Obs.
Min. 35.6	Vis. km. 5.0	p	
Dry 53.4	Clouds 0	(red.)	
Wet			
R.H. 28		Morn.	Foren.
Precip. mm/ in.		Noon	Aftern.
Snowfall/Depth in/ in.		Eve.	Night

-43

Vladivostok (31) -83 +40 123 -14 4.0

-9	-3		
2	-5		
-6	-5		
3	-1		
4	-2		
0	-7		
-6	0		
6	-4		
3	-5		
1	-6		
1	-2		
9			
-9			
2			
2			
-7			
-5			
6			
-1			

STATE COLLEGE, Pa. Date APR 8 1941

Time  
0700

Max. 62.6	Wind F <i>calm</i>	Barom. t 26.0	General Obs.  07 0° W°
Min. 30.2	Vis. km. 20	P 29.04	
Dry 33.2	Clouds 0	h (red.) 29.92	
Wet			
R.H. 63		From <i>clear at 100'-1000'</i>	Foren. <i>clear</i>
Precip. mm/ in.		Noon "	Aftern. "
Snowfall/Depth in/ in.		Eve. "	Night "

1  
 2  
 3  
 4  
 5  
 6  
 7  
 8  
 9  
 10  
 11  
 12  
 13  
 14  
 15  
 16  
 17  
 18  
 19  
 20  
 21  
 22  
 23  
 24  
 25  
 26  
 27  
 28  
 29  
 30  
 31  
 32  
 33  
 34  
 35  
 36  
 37  
 38  
 39  
 40  
 41  
 42  
 43  
 44  
 45  
 46  
 47  
 48  
 49  
 50  
 51  
 52  
 53  
 54  
 55  
 56  
 57  
 58  
 59  
 60  
 61  
 62  
 63  
 64  
 65  
 66  
 67  
 68  
 69  
 70  
 71  
 72  
 73  
 74  
 75  
 76  
 77  
 78  
 79  
 80  
 81  
 82  
 83  
 84  
 85  
 86  
 87  
 88  
 89  
 90  
 91  
 92  
 93  
 94  
 95  
 96  
 97  
 98  
 99  
 100

11-25-21 46 3.3  
 4



STATE COLLEGE, Pa. Date APR 2 1941

Time  
1903

Max. 61.7	Wind F N 2	Barom. t	General Obs.	
Min. 33.2	Vis. km.	P		
Dry 56.8	Clouds 0	h (red.)		
Wet				
R.H. 18		Morn.	Foren.	
Precip. mm/ in.		Noon	Aftern.	
Snowfall/-Depth in/ in.		Eve.	Night	

-11

Vienna (22) -39 +28 67 -0.5 3.1

-1	-1		
0	-6		
-1			
5			
-2			
-7			
-7			
9			
0			
-1			
0			
0			
2			
1			
2			
-4			
8			
-7			
1			
-7			

STATE COLLEGE, Pa. Date **APR 9 1941**Time  
6:58

Max. 61.7	Wind F <i>calm</i>	Barom. t 78.0	General Obs. 07 W° 0°
Min. 33.2	Vis. km. 9	P. 28.97	
Dry 36.1	Clouds 0	h (red.) 28.84	
Wet			
R.H. 70		Morn. <i>clear</i>	Foren. <i>clear</i>
Precip. - mm/ in.		Noon "	Aftern. " <sup>(at least)</sup> <i>to fair</i>
Snowfall/Depth in/ in.		Eve. <i>fair</i>	Night <i>fair</i>



STATE COLLEGE, Pa. Date **APR 10 1948**

Time  
7:00

Max. 68.0	Wind F NE 2	Barom. t 80.0	General Obs. 7:00	
Min. 36.0	Vis. km. 12	P 28.93		
Dry 43.5	Clouds 4	h (red.) 28.90		
Wet	ci cc ac			
R.H. 60		Foren. <i>fair to ptly cloudy</i>	Foren. <i>ptly cloudy to fair</i>	
Precip. / in/ in.		Noon <i>ptly cloudy to fair</i>	Aftern. " " "	
Snowfall/ -Depth in/ in.		Eve. <i>fair</i>	Night <i>fair</i>	



STATE COLLEGE, Pa. Date **APR 11 1941**

Time

6:15

Max.	Wind F	Barom.	General Obs.
70.2	calm	t 77.0	7:00 a
Min.	Vis. km.	P	
41.8	15.00	29.02	
Dry	Clouds	(red.)	
42.0	'	28.90	
Wet			
R.H.		Foren.	Foren.
80		fair	fair
Precip.		Noon	Aftern.
in/	in.	"	" to pthly cloudy
Snowfall	-Depth	Eve.	Night
in/	in.	pthly cloudy to fair	fair





STATE COLLEGE, Pa. Date **APR 12 1941**

Time  
7:02

Max. 72.1	Wind F ENE 1	Barom. t 81.0	General Obs. 7:00 ∞
Min. 41.3	Vis. mi. 10 ∞	P 29.16	
Dry 44.7	Clouds 2	p (red.) 29.02	
Wet	Ac		
R.H. 75		Foren. <i>fair</i>	Foren. <i>fair</i>
Precip. mm/ in.		Noon "	Aftern. "
Snowfall/-Depth in/ in.		Eve. "	Night "

7  
6  
5  
4  
3  
2  
1  
-1  
-2  
-3  
-4  
-5  
-6  
-7

(5) - 24  
10 - 26 + 2 28

-17 2.0

STATE COLLEGE, Pa. Date **APR 13 1921**

Time  
6:56

Max. 70.1	Wind F SSE 2	Barom. t 76.5	General Obs. 6:30 7:00 01E
Min. 44.4	Vis. km. 15	P 29.11	11: 0-16"
Dry 49.0	Clouds 8 ⊕	h (red.) 28.99	
Wet	as		
R.H. 67		Foren. partly cloudy to cloudy	Foren. partly cloudy
Precip.		Noon partly cloudy	Altern. " "
Snowfall/Depth in/ in.		Eve. "	Night "

4  
6  
9  
5  
5  
1-  
1  
1-  
1-  
0

+28  
Granada (11) - 5 + 33 38  
+ 2 5 3 5

STATE COLLEGE, Pa. Date **APR 14 1941**

Time  
6:58

Max. 92.0	Wind F W 5	Barom. t 27.2	General Obs. 7:00' III 11 <sup>00</sup> WNW 45 mph	
Min. 46.7	Vis. km. 9 ∞'	P 28.89		
Dry 69.1	Clouds 79	p (red.) 28.76		
Wet	as co acc frost.			
R.H. 49		MOON cloudy	Foren. partly cloudy	
Precip. mm/ in.		Noon partly cloudy	Aftern. " " to cloudy	
Snowfall/Depth in/ in.		Even. " "	Night " " to fair (acc)	

1  
 2  
 3  
 4  
 5  
 6  
 7  
 8  
 9  
 10  
 11  
 12  
 13  
 14  
 15  
 16  
 17  
 18  
 19  
 20  
 21  
 22  
 23  
 24  
 25  
 26  
 27  
 28  
 29  
 30  
 31  
 32  
 33  
 34  
 35  
 36  
 37  
 38  
 39  
 40  
 41  
 42  
 43  
 44  
 45  
 46  
 47  
 48  
 49  
 50  
 51  
 52  
 53  
 54  
 55  
 56  
 57  
 58  
 59  
 60  
 61  
 62  
 63  
 64  
 65  
 66  
 67  
 68  
 69  
 70  
 71  
 72  
 73  
 74  
 75  
 76  
 77  
 78  
 79  
 80  
 81  
 82  
 83  
 84  
 85  
 86  
 87  
 88  
 89  
 90  
 91  
 92  
 93  
 94  
 95  
 96  
 97  
 98  
 99  
 100

-20  
 -35 + 15  
 50  
 - 8  
 38

STATE COLLEGE, Pa. Date

APR 15 1941

Time

7:02

Max. 83.2	Wind F SSW 3	Barom. t 80.0	General Obs. 700 1000 1320 1405
Min. 58.7	Vis. Km. 12	p 28.86	
Dry 66.9	Clouds 6	p (red.) 28.73	
Wet	ci cs		
R.H. 48	Foren. Fair (10 in, cs)	Foren. ptly cloudy	
Precip. mm/ in.	Noon partly cloudy to cloudy	Aftern. 0' 0' to cloudy	
Snowfall/-Depth in/ in.	Even. cloudy	Night cloudy	

Handwritten notes on lined paper, including a vertical list of numbers and a calculation.

1  
1  
5  
3  
1  
1  
4  
1  
1  
2

Halt 131 - 19 + 26 - 45  
+ 0.5 + 3.5  
+ 7



STATE COLLEGE, Pa. Date APR 16 1941

Time

7:02

Max. 79.0	Wind F SSW 2	Barom. t 81.0	General Obs. ☉ hr 12 <sup>15</sup> ☉ hr 1 <sup>02</sup>	
Min. 57.6	Vis. km. 15	28.89	TR 20:05 - 21:45	
Dry 58.8	Clouds 10	28.75	☉ <sup>01</sup> 21:03 - 21:30	
Wet	as ac asc			
R.H. 78	ac best	Foren. overcast	Foren. cloudy	
Precip. mm/ in.		Noon cloudy	Aftern. cloudy to pthly cloudy	
Snowfall/ -Depth in/ in.		Eve. " to overcast	Night overcast thunderstorms	

Handwritten notes on lined paper, including a vertical list of numbers on the right side and a table of values at the bottom.

1  
2  
3  
4  
5  
6  
7  
8  
9  
10

+20	-2	+22	24	+1.8	2.2
-----	----	-----	----	------	-----

STATE COLLEGE, Pa. Date		APR 17 1941		Time		6:55	
Max.	Wind F.	Barom.	General Obs.				
77.0	WSW 4	80.0	10.50	(cont. a. face) - 11 <sup>30</sup>			
Min.	Vts. Km. P.	57.1	28.29				
Dry	Clouds	60.6	28.65				
Wet	oc	2					
R.H.	76						
Precip.	6.2 in / 0.24 in	Fair		Morning			
		partly cloudy		Afternoon			
		partly cloudy		Night			
Snowfall / Depth	in.	partly cloudy		partly cloudy			

+13

2.1 -4 +17 21 +1.4 2.3

5

3

2

1



<sup>+6</sup>  
-9.3 (3) - 1 + 7 8 + 2.0 - 2.7  
4  
-3  
-1

STATE COLLEGE, Pa. Date		APR 18 1941		Time 18:15	
Max.	Wind F	Barom.	General Obs.		
Min.	Vis. km. p	30			
Dry	Clouds	3			
Wet	W. den	2			
R.H. 72	W. H. } W. H. } W. H. }	MOON			
Precip.	NOON	MORN.			
3.9 mm / .15 in	NOON	AFTERN.			
Snowfall - Depth	NOON	NIGHT			
in /	NOON	NIGHT			





STATE COLLEGE, Pa. Date		APR 19 1941		Time 0700	
Max.	77.2	Wind F.	C	Barom.	29.65
Min.	49.0	VIS. KM. P.	25	General Obs.	● 0015-0030
Dry	59.7	Clouds	2	▲ 0040-0300	TK 0320-0340
Wet	100	(red.)	28.89	▲ 0425-0502	TK 0420-0431
R.H.	96	100	28.76	● 0431-0435	● 0435-0445
Precip.	9.7	100	16:18-16:35	T 16:51	T 17:15:18 00
Snowfall - Depth	0.36 in	100	FOOT. 1000, 1000, 1000, 1000		
In	NOON	overcast to clear			
Evening	partly cloudy	partly cloudy			
Night	partly cloudy	partly cloudy			

-27

$-39 + 12 = 51$      $-1.4$      $2.7$

-3

-1

-3

-1

5

6

0

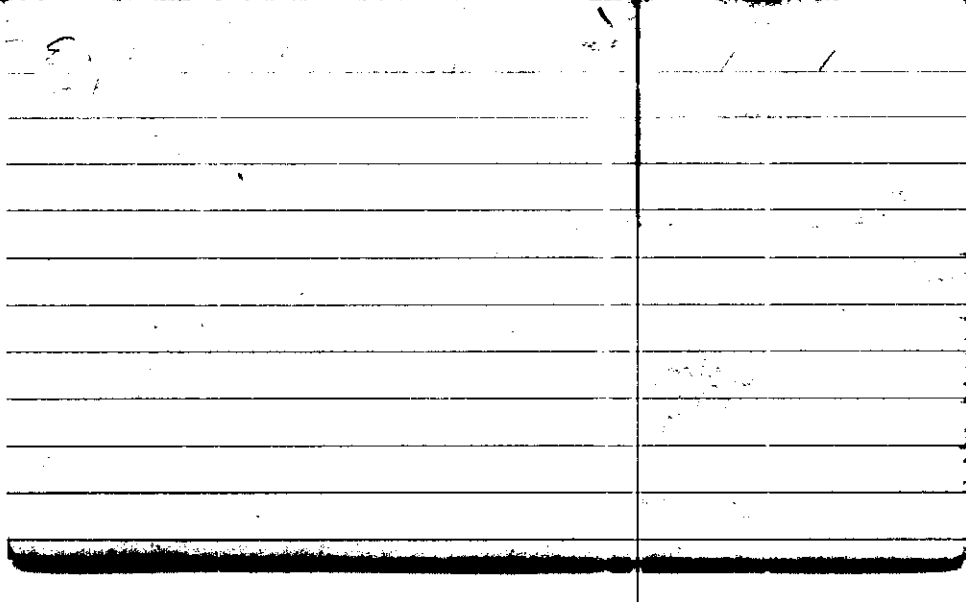
-2

-1

-2

-2





STATE COLLEGE, Pa. Date APR 21 1941

Time  
7:00

Max. 88.9	Wind F WNW 5	Barom. t 78.0	General Obs. • 1840-1841 ▽
Min. 45.3	Vis. km. 30	p 28.86	• 1858-1940 ▽
Dry 48.0	Clouds 2	p (red.) 28.77	▽ 20:30-20:35
Wet	ca ca ca from		
R.H. 59		Morn. fair	Foren. fair
Precip. 0.1 mm / T in		Noon "	Aftern. partly cloudy
Snowfall / -Depth in / in		Eve. rain squalls cloudy-overcast	Night cloudy

-79  
 (76) -131 + 52 188  
 -10 24

-Ekaterrinburg

1  
 4  
 1

3  
 4  
 3

0  
 2  
 3

3  
 3  
 3

0  
 2  
 3

3  
 3  
 3

0  
 2  
 3

3  
 3  
 3

0  
 2  
 3

3  
 3  
 3

0  
 2  
 3

3  
 3  
 3

0  
 2  
 3

3  
 3  
 3

0  
 2  
 3

3  
 3  
 3

0  
 2  
 3

3  
 3  
 3

0  
 2  
 3

3  
 3  
 3

0  
 2  
 3

3  
 3  
 3

0  
 2  
 3

3  
 3  
 3

0  
 2  
 3

3  
 3  
 3

0  
 2  
 3

3  
 3  
 3

0  
 2  
 3

3  
 3  
 3

0  
 2  
 3

3  
 3  
 3

0  
 2  
 3

3  
 3  
 3

0  
 2  
 3

3  
 3  
 3

0  
 2  
 3

3  
 3  
 3

0  
 2  
 3

3  
 3  
 3

0  
 2  
 3

3  
 3  
 3

0  
 2  
 3

3  
 3  
 3

STATE COLLEGE, Pa. Date **APR 21 1930**

Time  
1930

Max. 61.7	Wind F W 9	Barom. t	General Obs.	
Min.	Vis. km. 10	P		
Dry 58.0	Clouds 79	(red.)		
Wet	fc 1 so > 8			
R.H.		Morn.	Foren.	
Precip. 7 mm/ in.		Noon	Aftern.	
Snowfall/-Depth in/ in.		Eve.	Night	

Upsilon (22) - 48 + 13 61 -1.6 2.8

0	-4		
-6	1		
-2			
1			1
-3			
-5			
1			
-2			
8			
-3			
0			
-4			
-1			
-3			
-1			1
-3			
2			
-3			
-1			
-7			



STATE COLLEGE, Pa. Date **APR 22 1941**

Time  
**0658**

Max. <b>61.7</b>	Wind F <b>WNW 2</b>	Barom. <b>t 74.0</b>	General Obs.
Min. <b>34.5</b>	Vis. km. <b>25</b>	p <b>29.21</b>	
Dry <b>37.4</b>	Clouds <b>7</b>	p (red.) <b>29.09</b>	
Wet	<b>sc 4</b> <b>pc 3</b>		
R.H. <b>85</b>	Mo. n.	Foren.	
Precip. <b>0.5 mm / 0.02 in.</b>	noon <b>clear</b>	Aftern. <b>clear to fair</b>	<b>ci. flocc</b> <b>in den</b> <b>in pm</b>
Snowfall / -Depth in / in.	Eve. <b>fair</b>	Night	

-1  
-3  
1  
2  
0  
-2  
3  
-7  
-2  
-9  
-7  
-3  
-7  
-9

For 6-7 (14) - 50  
+ 6 52  
- 3.1 4.0

STATE COLLEGE, Pa. Date APR 23 1941

Time  
7:02

Max. 58.6	Wind F WSW 2	Barom. t 72.8	General Obs. 7:00 20' - 2'
Min. 34.5	Vis. km. 7	29.09	645 - 0 / 7 <sup>00</sup> 0 / 8 <sup>00</sup> 0 / 9 <sup>30</sup>
Dry 40.0	Clouds 0	0 (red.) 28.97	6-10 <sup>30</sup>
Wet	cc cc cc		6:00 LI <sup>0</sup> duration 15:25 0 <sup>0</sup> - 24:00
R.H. 69		Foren. fair	Foren. partly cloudy to cloudy
Precip. mm/ in.		Noon cloudy	Aftern. overcast rain
Snowfall/ -Depth in/ in.		Eve. overcast rain	Night " 4

	1
	2
	3
	4
	5
	6
	7
	8
	9
	10
	11
	12
	13
	14
	15
	16
	17
	18
	19
	20
	21
	22
	23
	24
	25
	26
	27
	28
	29
	30
	31
	32
	33
	34
	35
	36
	37
	38
	39
	40
	41
	42
	43
	44
	45
	46
	47
	48
	49
	50
	51
	52
	53
	54
	55
	56
	57
	58
	59
	60
	61
	62
	63
	64
	65
	66
	67
	68
	69
	70
	71
	72
	73
	74
	75
	76
	77
	78
	79
	80
	81
	82
	83
	84
	85
	86
	87
	88
	89
	90
	91
	92
	93
	94
	95
	96
	97
	98
	99
	100

$$-14$$

$$f(x) = x^2 - 38x + 24$$

$$f(21) = 21^2 - 38(21) + 24 = 441 - 798 + 24 = -333$$

0.7 3.0

STATE COLLEGE, Pa. Date **APR 24 1947**

Time  
7:00

Max. 63.4	Wind F VSW 1	Barom. t 28.9	General Obs. 12 <sup>00</sup> 3:30-5 <sup>00</sup> = 0:00-7:30
Min. 40.0	Vis. km. 3	28.94	3:35 10 <sup>00</sup> - mid
Dry 46.4	Clouds 10	(red.) 28.93	11 <sup>00</sup> ☉ 12 <sup>00</sup> ☉
Wet			15 <sup>00</sup> ☉ / -16:30
R.H. 95		MOON overcast, overcast to cloudy	MOON overcast to cloudy
Precip. 6.5 mm / 0.26 in.		Noon cloudy	Aftern. cloudy to pty cloudy
Snowfall / -Depth in / in		Eve. pty cloudy to fair	Night fair

1-  
0-  
3-  
4-  
2-  
3-  
5-  
1-  
1-  
4-

fordham (10) - 19 + 5 = 24  
- 14 =

14 24

Max. 58.6	Wind F E 2	Barom. t 29.0	General Obs. 1000
Min. 29.9	Vis. km. 25	29.17	830-910 (ca mist, ca fog) (ca fog, ca fog)
Dry 37.4	Clouds 3 0	29.26	1000 @ -11 4
Wet	ca fil ca flow	Form. fair	Foren. fair
R.H. 70.		NOON "	Aftern. "
Precip. m/ in		Eve. "	Night " to pthy clouds
Snowfall/-Depth in/ in			





STATE COLLEGE, Pa. Date **APR 26 1941**

Time  
7:00

Max. 59.9	Wind F E 4	Barom. t 71.5	General Obs. 7:30 ☉ w neb, den
Min. 37.4	Vis. km. 20	29.11	☉ dr. 14:45 ☉ 15:59+10:52
Dry 45.0	Clouds 10	b (red.) 29.00	
Wet	as acc co		
R.H. 64		Foren. overcast	Foren. <sup>U, A, M, comp</sup> fair to pty cloudy
Precip. mm/ in.		Noon pty cloudy to cloudy	Aftern. cloudy, raindrops
Snowfall, -Depth in/ in.		Eve. " " to fair	Night fair to clear

Handwritten notes on lined paper, including the expression  $Dy = (3) - 3 + 0$  and the value  $-3$ .

-1

-2

$Dy = (3) - 3 + 0$

-3

3

-1.0

1.0

STATE COLLEGE, Pa. Date **APR 27 1941**

Time  
**5:57**

Max. 62.7	Wind F W 2	Barom. t	General Obs. 6:00 LI
Min. 35.6	Vis. km. 25	P	
Dry 36.5	Clouds asc	(red.)	
Wet			
R.H. 75	Foren. <i>fair</i>	Foren. <i>fair</i>	
Precip. 0.0	in/T in	Noon "	Aftern. " <i>to pth cloudy</i>
Snowfall/Depth in/ in	Eve. "	Night "	

2  
-2  
-1  
-4  
-2  
-1  
0  
0  
-1  
-1  
-2  
-4  
-2  
-2  
0  
-1  
-2  
-2  
0

Cham (K0) - 20 + 16 56  
-4  
-0.2  
1.8

STATE COLLEGE, Pa. Date

APR 27 1941

Time

6.55

Max.	Wind F WSW 2	Barom. t 73.0	General Obs.	
Min.	Vis. km. 20	p 29.06		
Dry 42.8	Clouds 1	b (red.) 28.94		
Wet	acc			
R.H. 67		Morn.	Foren.	
Precip. mm/ in.		Noon	Aftern.	
Snowfall/-Depth in/ in.		Eve.	Night	

+21

M. 1 a 11 - 22 + 43 65 + 1.2 3.6

1  
-4  
1  
2  
-2  
1  
-2  
1  
-2  
6  
5  
1

STATE COLLEGE, Pa. Date

APR 28 1941

Time

Max. 67.2	Wind F WSW 3	Barom. t 74.0	General Obs. 700 2° 60° W (downstairs)
Min. 42.8	Vis. km. 14	P 29.06	
Dry 47.4	Clouds 1	p (red.) 29.74	
Wet	0		
R.H. 71		Morn. fair	Foren. fair
Precip. — mm/ in.		Noon f.	Aftern. f.
Snowfall/Depth in/ in.		Eve. f.	Night f.

[Faint, illegible handwriting on lined paper]

-2  
-1  
-3  
-3 + 0 3  
-1.5 1.5



STATE COLLEGE, Pa. Date

APR 29 1941

Time  
6:40

Max. 78.0	Wind F E 2	Barom. t 75.0	General Obs. 7.00 a' <del>∞</del>
Min. 46.7	Vis. km. 15	P 29.18	
Dry 50.7	Clouds < 1	o (red.) 29.06	
Wet	ci		
R.H. 64		Foren. clear to fair	Foren. fair
Precip. - mm/ in		Noon "	Aftern. clear
Snowfall/-Depth in/ in		Eve. fair	Night "

Handwritten notes on lined paper, including a scribble at the top and a list of numbers on the right side.

- 4
- 2
- 1
- 2

Colombo (5) - 14 to 14 - 2.8 2.8

-14

STATE COLLEGE, Pa. Date

APR 29 1941

Time

19:06

Max. 82.2	Wind F WSW 2	Barom. t	General Obs.
Min. 50.6	Vis. km. 12	p	
Dry 73.0	Clouds < 1	p (red.)	
Wet	i		
R.H. 19		Morn.	Foren.
Precip. . mm/ in.		Noon	Aftern.
Snowfall/-Depth in/ in.		Eve.	Night

+15

Venice (5) -7 +17 24 +2.0 4.8

0  
-7  
4  
6  
7

STATE COLLEGE, Pa. Date **APR 30 1941**Time  
0650

Max. 82.2	Wind F W 2	Barom. t 28.0	General Obs. 0700 ∞°
Min. 48.7	Vis. km. 6	p 29.08	
Dry 57.7	Clouds 0	p (red.) 28.95	
Wet			
R.H. 52		Morn. clear	Poren. clear
Precip. in/ in.		Noon fair (< 1/10 ac)	Aftern. pty cloudy (cu)
Snowfall/-Depth in/ in.		Evng pty cloudy to fair	Night fair



STATE COLLEGE, Pa. Date **APR 30 1941**

Time  
→ 1900

Max. 81.5	Wind F W 2	Barom. t	General Obs.	
Min. 57.7	Vis. km. 12	P		
Dry 74.5	Clouds 7	b (red.)		
Wet	sc vap 3 ci fd 2			
R.H. 24	ci flocc 2	Morn.	Foren.	
Precip. mm/ in.		Noon	Aftern.	
Snowfall/-Depth in/ in.		Eve.	Night	

+ 10

-15 + 25 40 + 0.6 2.5

10	
0	
-1	
-1	
1	
0	
-2	