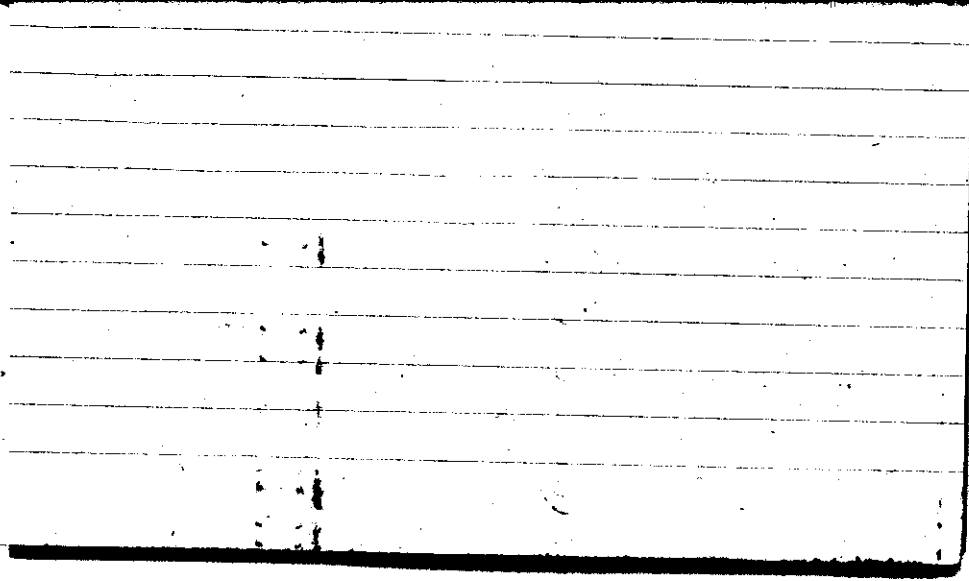


STATE COLLEGE, Pa. Date OCT 1 - 1941

Time
0705

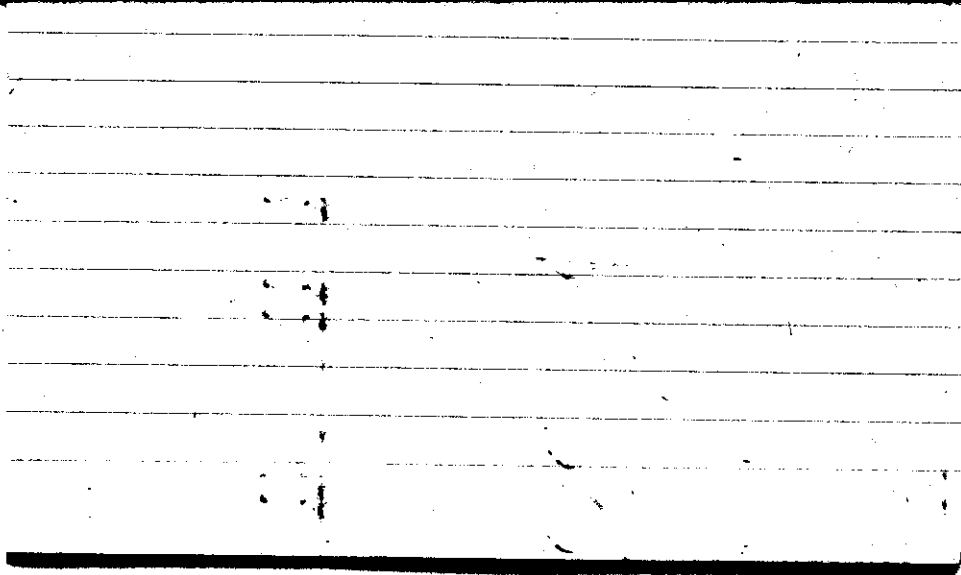
Max. 67.6	Wind F W 2	Barom. t 74	General Obs. 7 ¹ 2:50-7:25 ° 16:00 °-16:10
Min. 41.0	Vis. km. 8	p 28.87	
Dry 63.	Clouds 10	p (red.) 28.75	
Wet	ms sc		
R.H. 98		Morn. overcast rain	Foren. cloudy to partly cloudy (ci flocc, cc)
Precip. 4.8 mm / 0.19 in.		Noon cloudy	Aftern. cloudy to overcast, rain
Snowfall/-Depth — in / — in		Eve. cloudy	Night pty cloudy



STATE COLLEGE, Pa. Date **OCT 2 - 1941**

Time
0700

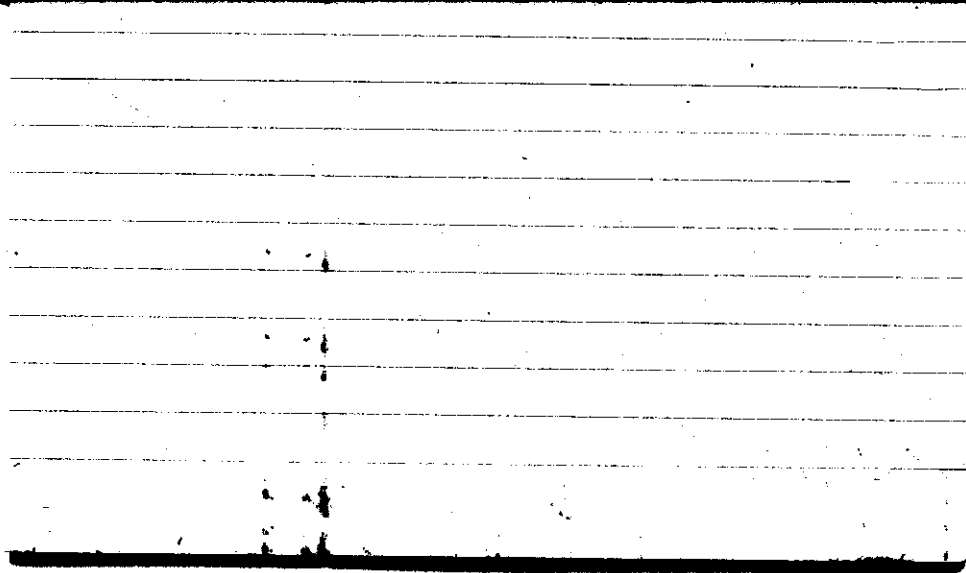
Max. 71.3	Wind P N 2	Barom. t 74	General Obs. 7' $\frac{92}{02}$ 1720 ● - 18 ^h	
Min. 46.0	Vis. km. 0.2 \equiv^2	P 29.14		
Dry 46.3	Clouds \equiv^2 X	p(red.) 29.02		
Wet	0730: 7/10		20 ³⁰ - 21 ³⁰ ☉	
R.H. 100	ci floc ac	Morn. fog, part, cloudy	Foren. cloudy	
Precip. T mm / T in.		Noon cloudy	Aftern. overcast rain	
Snowfall/-Depth — in / — in		Eve. overcast with breaks	Night overcast	



STATE COLLEGE, Pa. Date **OCT 3 - 1941**

Time
0700

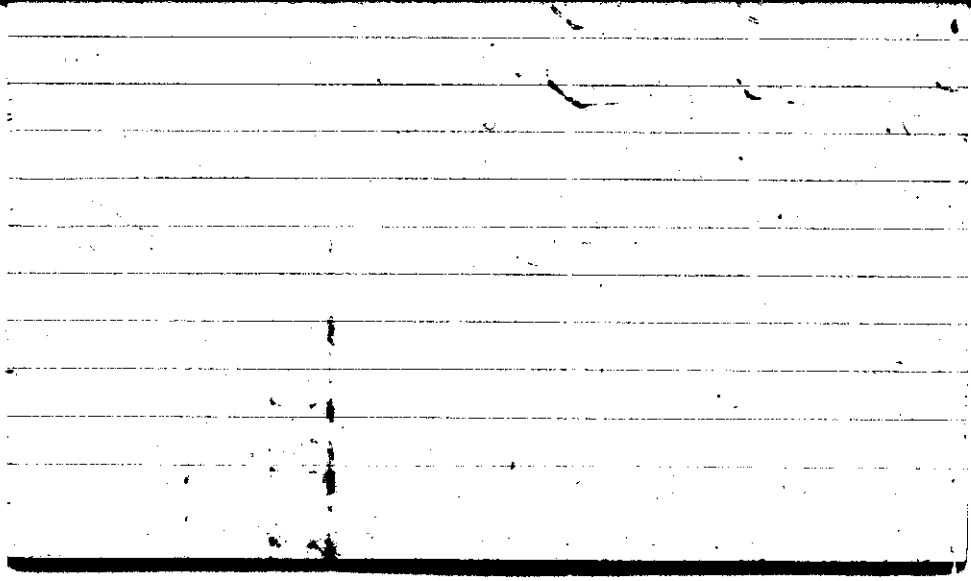
Max. 65.8	Wind P SW 2	Barom. t 74	General Obs. 7 ^h \equiv 0115-0130 ● 0430-0600 ●-1 1325-1330 ● 1545 - interm. Rain till 24
Min. 46.0	Vis. km. 3	p 29.04	
Dry 59.8	Clouds 10	p (red.) 28.92	
Wet	no		
R.H. 98		Morn. overcast	Foren. overcast with breaks
Precip. 2.9 mm / .11 in.		Noon overcast rain	Aftern. overcast rain
Snowfall / -Depth — in / — in.		Eve. overcast rain	Night overcast rain



STATE COLLEGE, Pa. Date OCT 4 - 1941

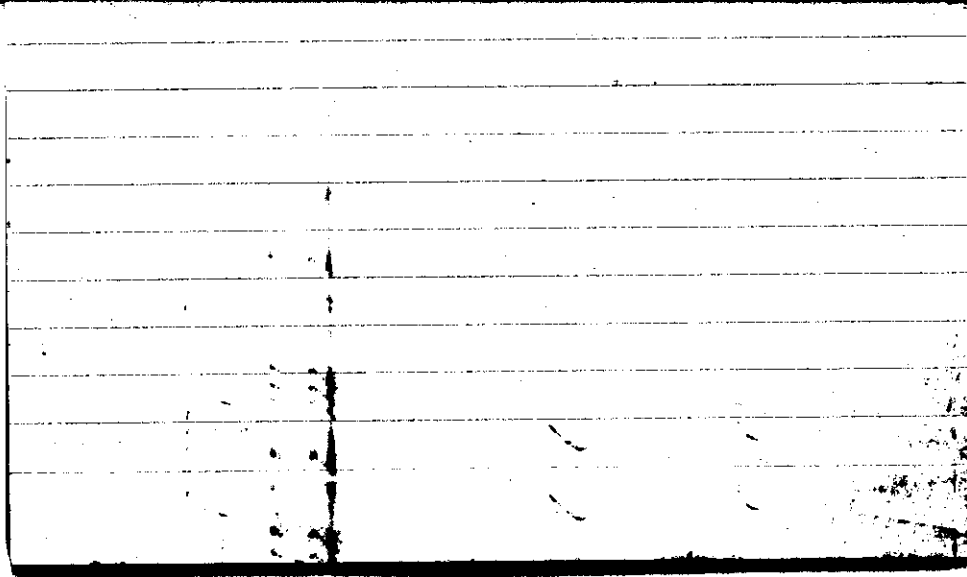
Time
0705

Max. 70.0	Wind F SSW 1	Barom. t 74	General Obs. ● 0000 - 0030 ● dr 2055 - 2100	
Min. 59.8	Vis. km. 25	p 28.85		
Dry 67.2	Clouds 8	p(red.) 28.73		
Wet	sc ac			
R.H. 98		Morn. cloudy	Foren. cloudy	ca den ci flocc
Precip. 13.2 mm/0.52 in.		Noon cloudy	Aftern. cloudy	
Snowfall/-Depth — in/ — in.		Eve. cloudy	Night cloudy	



STATE COLLEGE, Pa. Date **OCT 5-1941**Time
0700

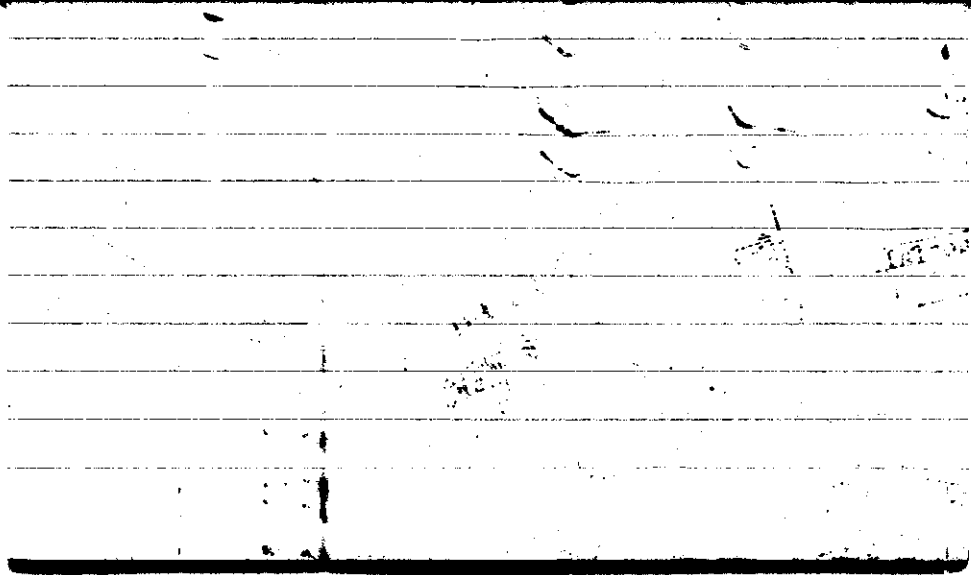
Max. 80.0	Wind F W 2	Barom. t 78	General Obs. 7 ^h 2 ^z
Min. 66.0	Vis. km. 25	p 28.79	
Dry 67.9	Clouds 1	p (red.) 28.66	
Wet	ci flocc ci fil.		
R.H. 97		Morn. fair to partly cloudy	Foren. cloudy
Precip. Tr mm / Tr in.		Noon cloudy	Aftern. (ci flocc, ci fil, cc) cloudy
Snowfall / -Depth in / in.		Eve. cloudy	Night cloudy



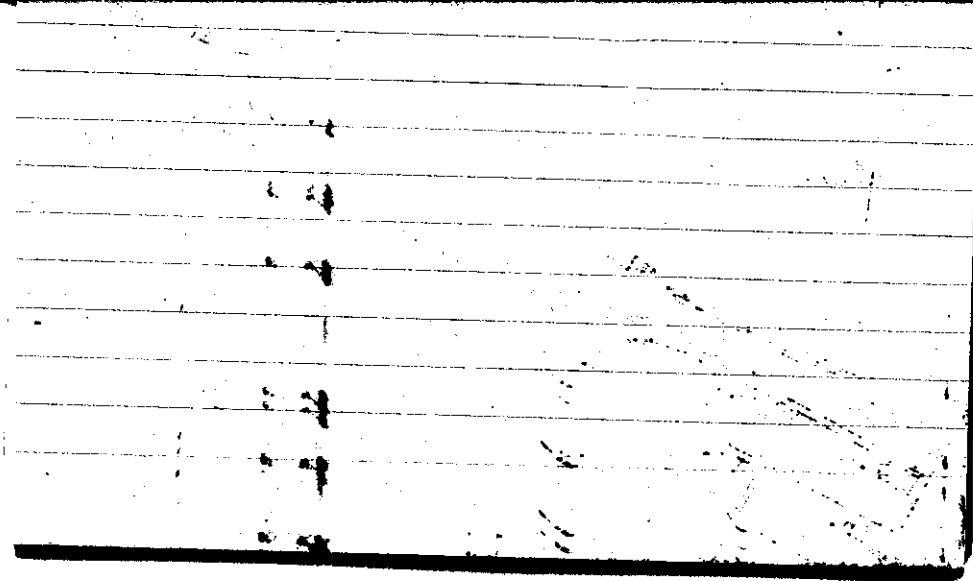
STATE COLLEGE, Pa. Date OCT 6 - 1941

Time
0700

Max. 85.6	Wind W 2	Barom. t 81	General Obs.	
Min. 67.8	Vis. km. 25	p 28.96	7 ^h 2° 22 ☉ - 24 ^h	
Dry 71.1	Clouds 7	p (red.) 28.82		
Wet	cs flocc ci fil			
R.H. 95	(cu, ac)	Morn. partly cloudy	Foren. partly cloudy	
Precip. mm/ in.		Noon " "	Aftern. ci pra, ci unc ci fil, ci flocc, cc	
Snowfall/-Depth in/ in.		Eye. fair to partly cloudy	Night cloudy	

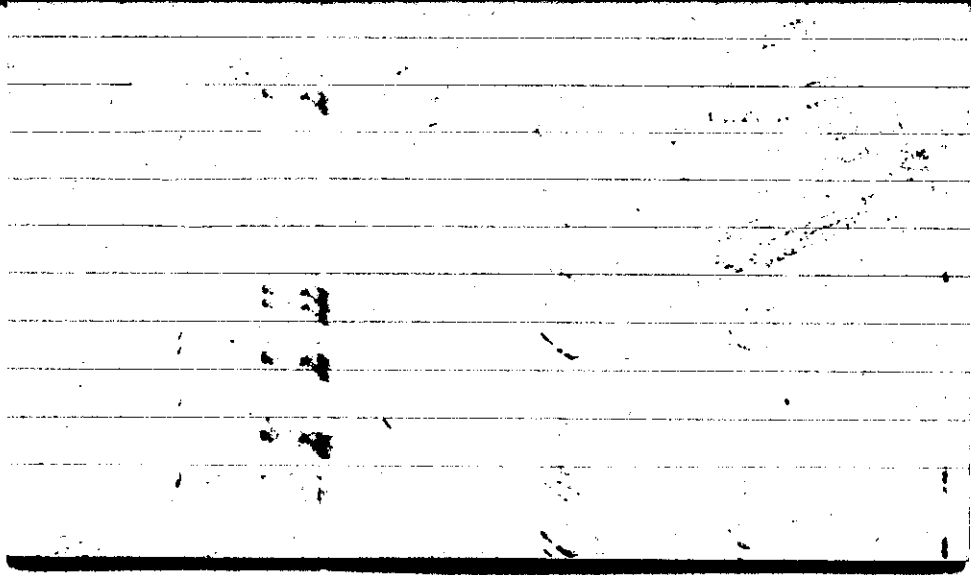


Max. 85.6	Wind F W 2	Barom. t 81	General Obs. 7¹¹co 3:31-400 ↘SE ● 400-910	
Min. 66.6	Vis. km. 10	p 28.88	1345.7-1350	
Dry 69.0	Clouds 4	p (red.) 28.75	1850 ↘NW-N	
Wet	ci flocc ci den ci fil cc ac		● 21:20-2125	
R.H. 95		Morn. partly cloudy	Foren. fair to partly cloudy	
Precip. 0.6 mm / 0.02 in.		Noon cloudy (cb, ci not, ca comp)	Aftern. cloudy threatening	
Snowfall/-Depth — in / — in.		Eve. cloudy, light shower, lightning	Night cloudy to partly cloudy	

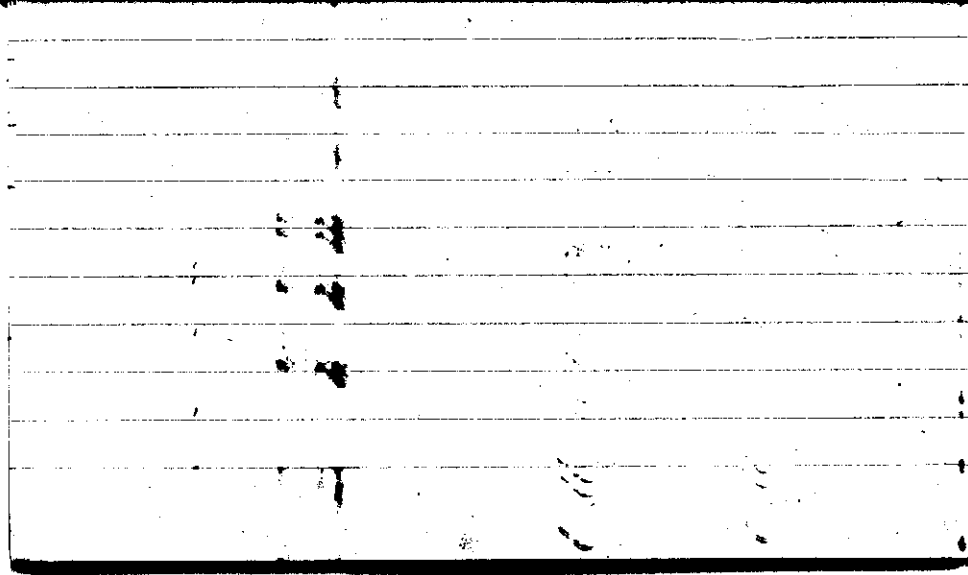


STATE COLLEGE, Pa. Date **OCT 8 - 1941**Time
0705

Max. 89.8	Wind F WNW 4	Barom. t 81	General Obs.
Min. 54.7	Vis. km. 35	p 28.80	
Dry 55.5	Clouds 2	p(red.) 28.66	
Wet	pc cu.		
R.H. 66		Morn. partly cloudy	Foren. partly cloudy
Precip. 0.1 mm/ T in		Noon fair	Aftern. fair to partly cloudy
Snowfall/-Depth — in/ — in		Eve. partly cloudy to cloudy	Night clearing



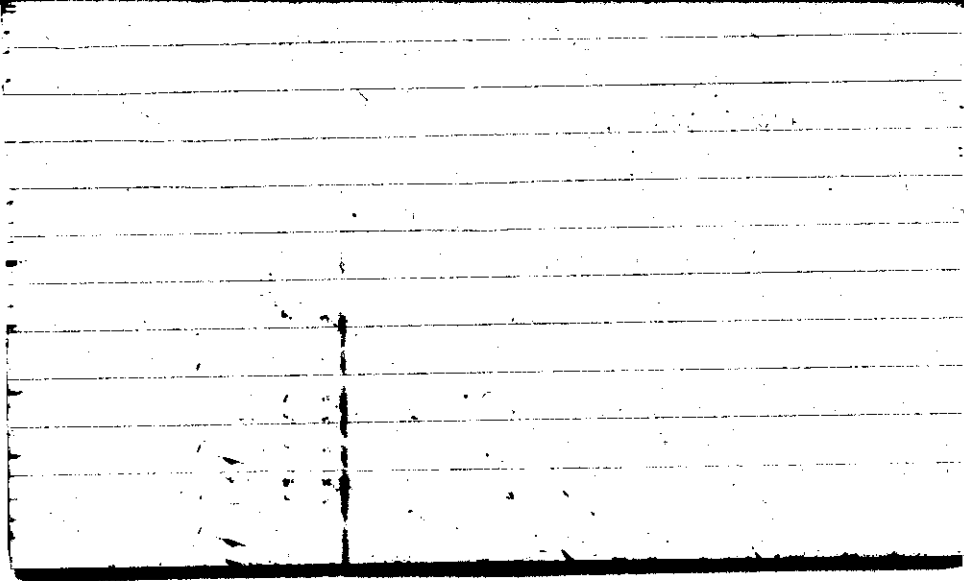
Max. 67.0	Wind F W 1	Barom. t 64	General Obs.	
Min. 43.8	Vis. km. 3.5	p 28.99	7 ^h 2° 10 ⁵⁰ 6-11 30	
Dry 46.5	Clouds 2	p(red.) 28.90		
Wet	cc ci pra ci flo cu			
R.H. 95		Morn. fair	Foren. fair	
Precip. — mm/ — in.		Noon fair to partly cloudy	Aftern. partly cloudy to cloudy	
Snowfall/Depth — in/ — in.		Eve. cloudy	Night cloudy to overcast	



STATE COLLEGE, Pa. Date **OCT 10 1941**

Time
0700

Max. 66.4	Wind F WNW 3	Barom. t 70	General Obs. 7h = °	
Min. 46.2	Vis. km. 3	p 28.59	●° 0220-0250	
Dry 56.8	Clouds 10	p(red.) 28.48	●° 0310-0320	
Wet	ms		●° 0605-0655	
R.H. 100	fs		●° 0845-0900 IIII	
			▲° 1240-1315	
			▼° 1525-1535	●° 1640-1755
			▼° 1930-2015	
Precip. 0.4 mm / 0.02 in.		Morn. overcast rain	Foren. overcast	
Snowfall/-Depth --- in / --- in.		Noon cloudy hail + rain shower	Aftern. cloudy showers	
		Eve. cloudy showers	Night cloudy	



STATE COLLEGE, Pa. Date (OCT 10 1941)

Time 1300 ^②

Max.	Wind F WNW 8	Barom. t	General Obs.	
Min.	Vis. km.	p		
Dry 51	Clouds 10 cb	p (red.)		
Wet				
R.H.		Morn.	Foren.	
Precip. mm/ 0.04 in.		Noon	Aftern.	
Snowfall/ -Depth in/ in.		Eve.	Night	

+32

wick(13) -6 +38

44

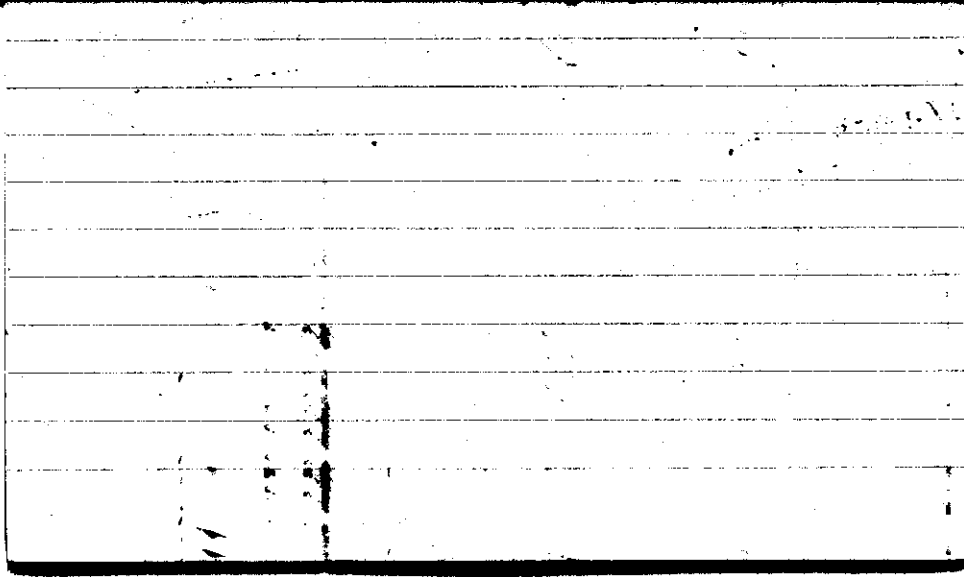
+2.5

3.4

9
-1
2
-4
-1
3
5
2
5
5
0
2

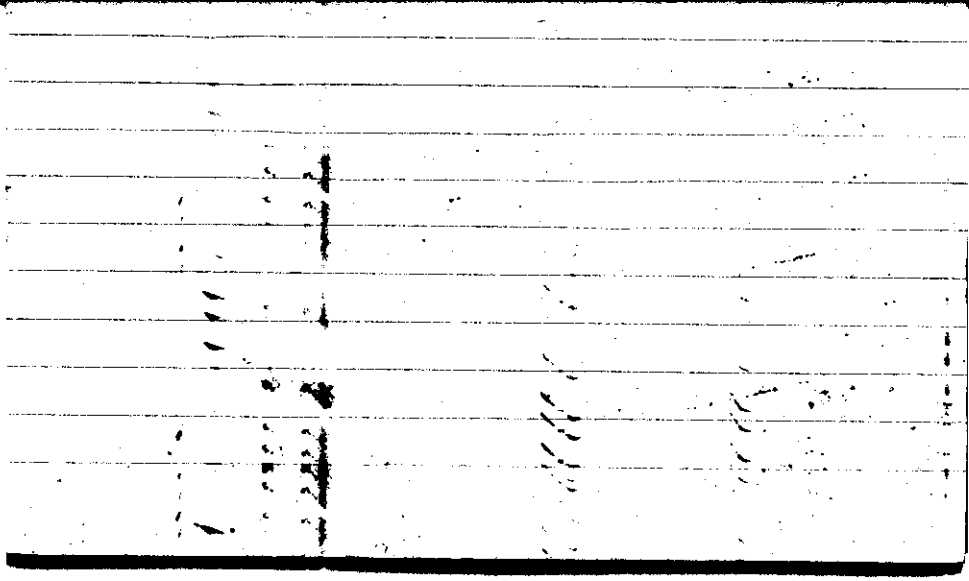
STATE COLLEGE, Pa. Date **OCT 11 1941**Time
0700

Max. 62.0	Wind F NW 5	Barom. t 72	General Obs. 6:0-6:20
Min. 41.8	Vis. km. 5.0	p 28.98	7 ^h ● - 7:15 ▽
Dry 43.6	Clouds 9	p (red.) 28.87	Rainbow 7 ^h -7:15
Wet	ac fc		
R.H. 88		Morn. cloudy rain showers	Foren. cloudy
Precip. 3.8 mm / 0.15 in.		Noon cloudy, clearing	Aftern. partly cloudy
Snowfall / -Depth — in / — in.		Eve. clear	Night clear, increasing cloudiness



STATE COLLEGE, Pa. Date **OCT 12 1941**Time
0705

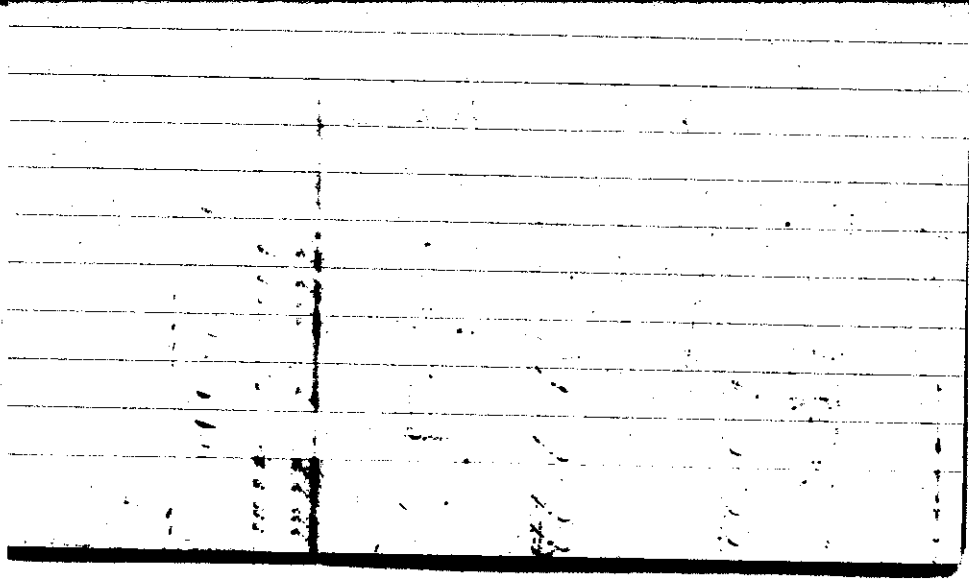
Max. 54.3	Wind F SW-3	Barom. t 66	General Obs. 7 ^h ●● H Elm's fire on top of antenna -715 07:30-09:35 ◊°
Min. 41.5	Vis. km. 50	p 28.93	
Dry 47.0	Clouds 8	p (red.) 28.83	
Wet	ac sc cb		
R.H. 66		Morn. cloudy above, to partly cloudy	Foren. partly cloudy
Precip. — mm / — in.		Morn. fair (ci flocc)	Aftern. fair
Snowfall / -Depth in / in.		Eve. fair	Night fair



STATE COLLEGE, Pa. Date **OCT 13 1941**

Time
0700

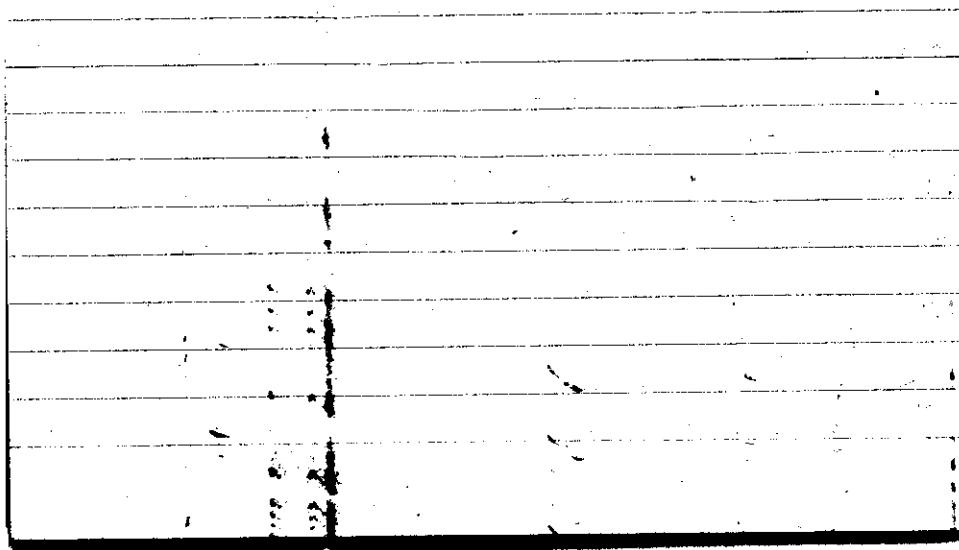
Max. 67.0	Wind P SW 1	Barom. t 68	General Obs. 6 ^h C' r ²
Min. 42.5	Vis. km. 3 0'	p 29.16	0730 (6) - 0820
Dry 44.0	Clouds 8	p (red.) 29.06	
Wet	ci unc ci pra cs den cs neb cs flocc cc		
R.H. 100		Morn. fair foggy	Foren. fair foggy
Precip. T mm / T in.		Noon fair	Aftern. fair
Snowfall / -Depth — in / — in.		Eve. fair to partly cloudy	NIGHT partly cloudy to cloudy



STATE COLLEGE, Pa. Date **OCT 14 1941**

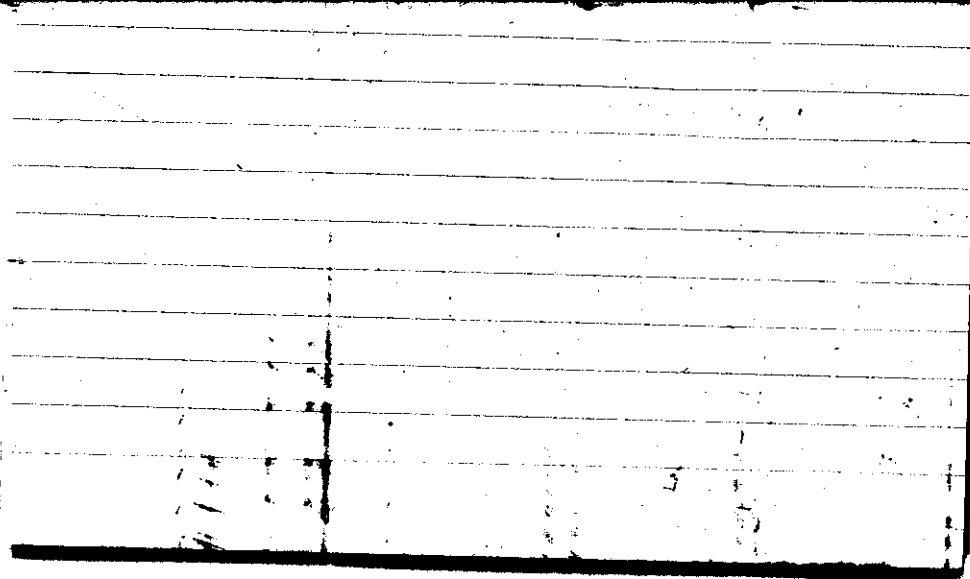
Time
0700

Max. 71.1	Wind F SW 3	Barom. t 70	General Obs. 4.5 01; 7.0) - 8h
Min. 43.2	Vis. km. 35	p 28.96	12:00 0° - 14h
Dry 60.3	Clouds 9	p (red.) 28.85	14:20 0° - 15:20
Wet	ci neb ci flocc ac		17:20 0° - 18:00
R.H. 51	ac. cast.	Morn. cloudy	Foren. cloudy
Precip. — mm / — in.		Noon cloudy to overcast rain	Aftern. overcast rain
Snowfall / -Depth — in / — in.		Eve. overcast	Night overcast rain



STATE COLLEGE, Pa. Date **OCT 15 1941**Time
0905

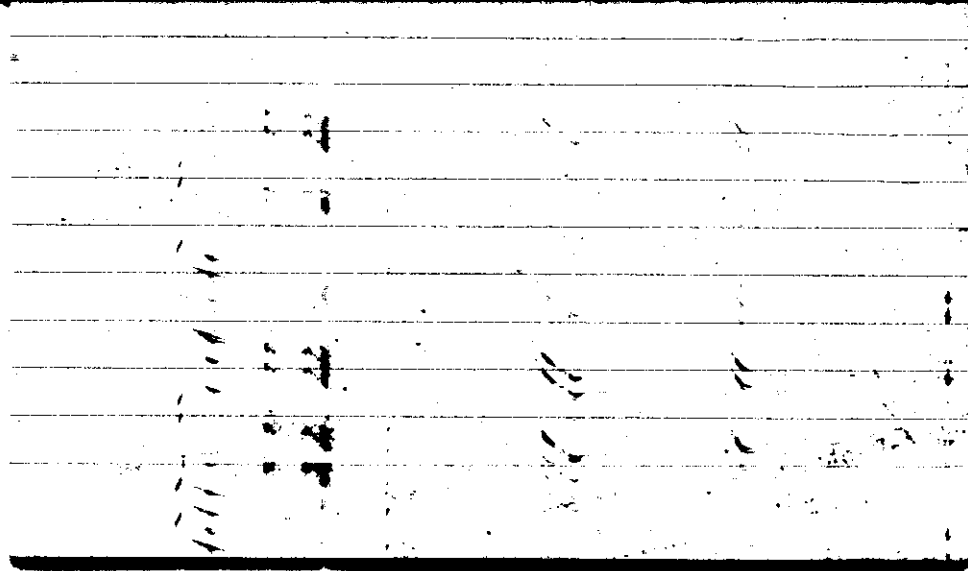
Max. 75.4	Wind F NNE 2	Barom. t 72	General Obs. 6:55 °-7:30 0:00 °-3:00 8:50 °-13:30	
Min. 56.0	Vis. km. 8	p 28.92		
Dry 56	Clouds 10	p(red.) 28.81		
Wet	as na			
R.H. 92		Morn. overcast rain	Foren. overcast rain	
Precip. 7.2 mm / 0.29 in.		Noon overcast rain	Aftern. ^{in place} clearing to fair ^{in place} cc	
Snowfall/-Depth — in / — in.		Eve. fair	Night	



STATE COLLEGE, Pa. Date **OCT 16 1941**

Time
0700

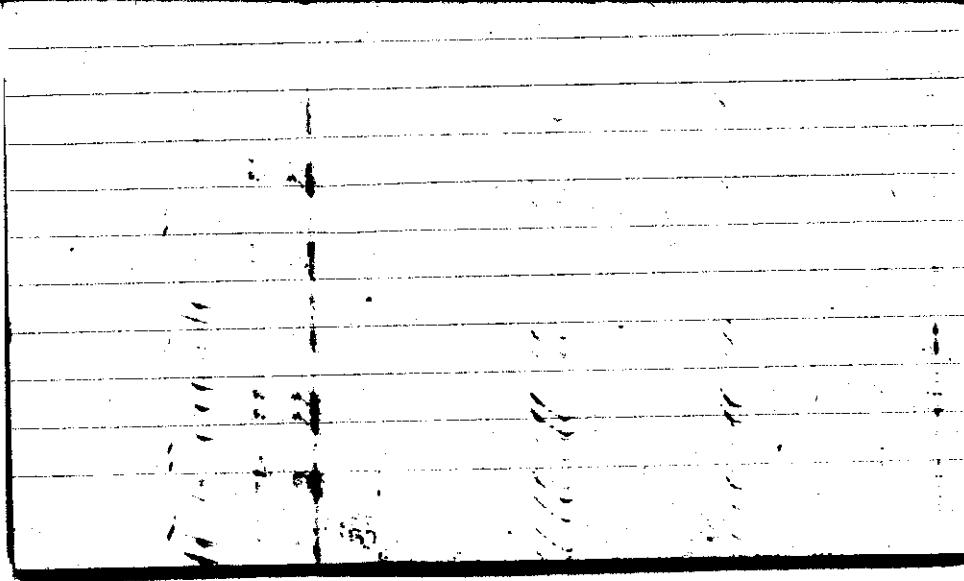
Max. 63.8	Wind F NW 1	Barom. t 71	General Obs.
Min. 45.0	Vis. km. 35	p 29.06	
Dry 45.2	Clouds 70	p(red.) 28.95	
Wet	SC		
R.H. 75		Morn. partly cloudy	Foren. partly cloudy
Precip. 6.3 mm / .24 in.		Noon partly cloudy to / air	Aftern. fair (ci den, ci flocc)
Snowfall / -Depth - — in / — in		Eve. fair	Night clear



STATE COLLEGE, Pa. Date **OCT 17 1941**

Time
0705

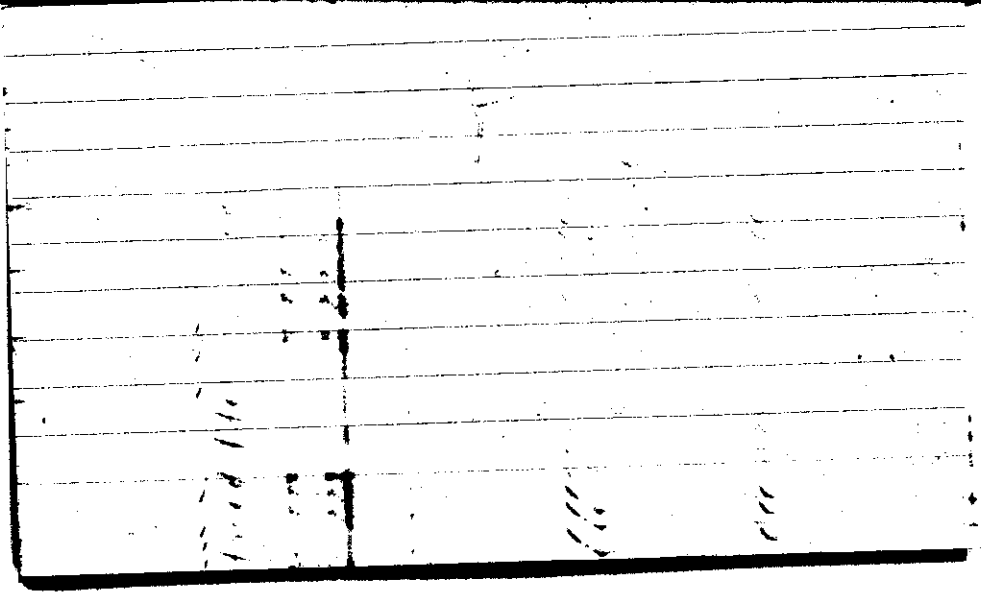
Max. 61.0	Wind F Calm	Barom. t 71	General Obs. 7 ^h LI' 00:00 LI' @ 10:00-11 ^h cs neb, ci den, ci gra ci fil, ci unc cc 1415-1430 (o
Min. 30.7	Vis. km. 20	p 29.26	
Dry 33.7	Clouds 9	p(red.) 29.15	
Wet	ac		
R.H. 94		Morn. overcast breaks	Foren. cloudy
Precip. — mm/ — in.		Noon cloudy	Aftern. cloudy
Snowfall/-Depth — in/ — in.		Eve. "	Night " ?



STATE COLLEGE, Pa. Date **OCT 18 1941**

Time

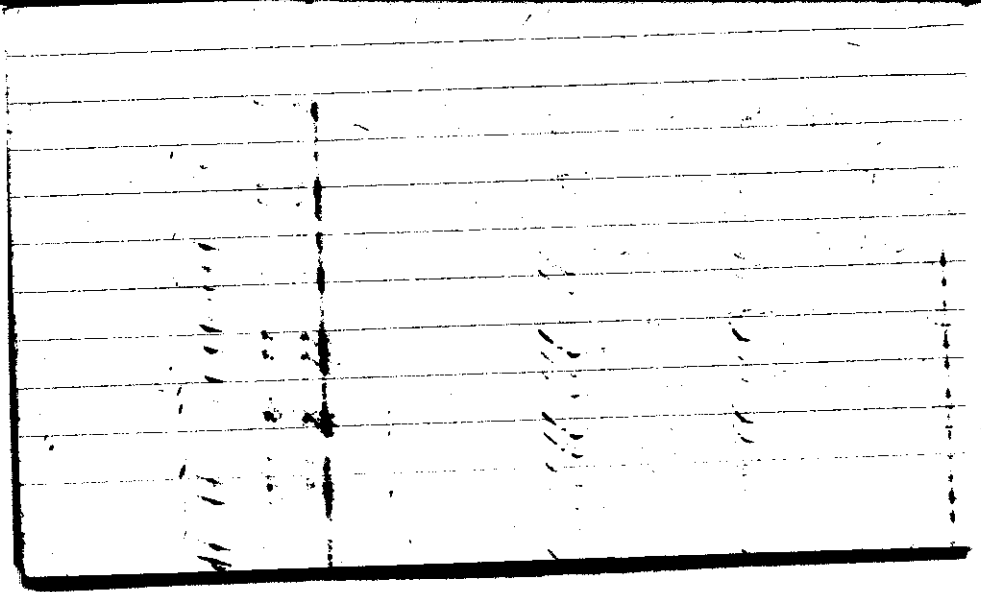
Max. 57.0	Wind F SW 1	Barom. t 70	General Obs.	
Min. 33.7	Vis. km. 17	D 29.14	● 00:00 (e) - 0830	
Dry 49.4	Clouds 10/10	p(red.) 29.03	● 1020 - 1810	
Wet	As No		● 1950 - 2400	
R.H. 73		Morn. overcast light rain	Foren. overcast light rain	
Precip. 0.3 mm / 0.01 in.		Noon "	Aftern. "	
Snowfall/-Depth — in / — in		Eve. overcast	Night h ?	



STATE COLLEGE, Pa. Date **OCT 19 1941**

Time
0705

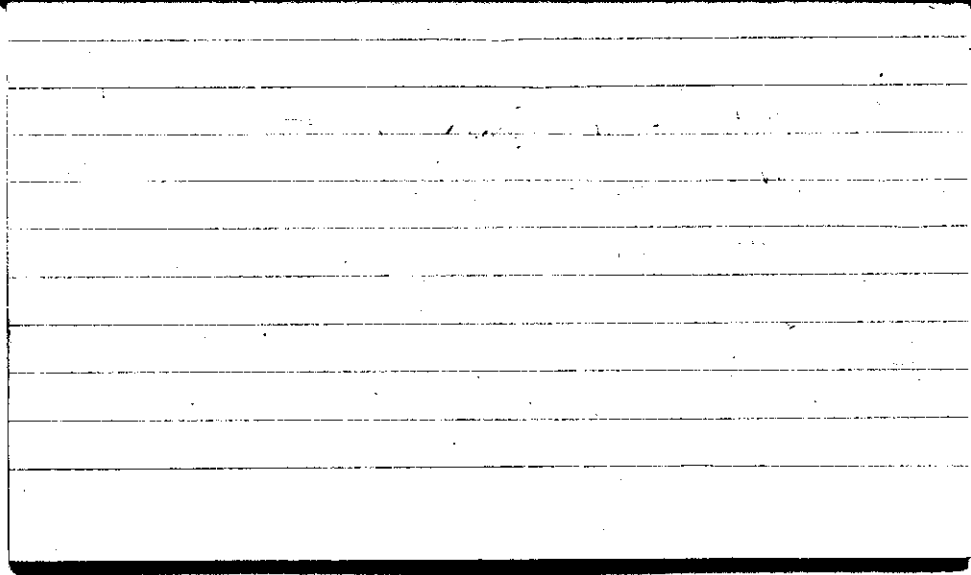
Max. 60.0	Wind F W 3	Barom. t 70	General Obs.	
Min. 49.0	Vis. km. 14	28.99	☉ 00.00-0500 ☉ 16:45-21 ^h	
Dry 59.8	Clouds 6 ci sc	p(red.) 28.88		
Wet				
R.H. 93		Morn. cloudy	Foren. cloudy	
Precip. 5.8 mm / 0.23 in.		Noon cloudy	Aftern. cloudy	
Snowfall/-Depth — in / — in.		Eve. cloudy to overcast rain	Night	



STATE COLLEGE, Pa. Date OCT 20 1941

Time
0700

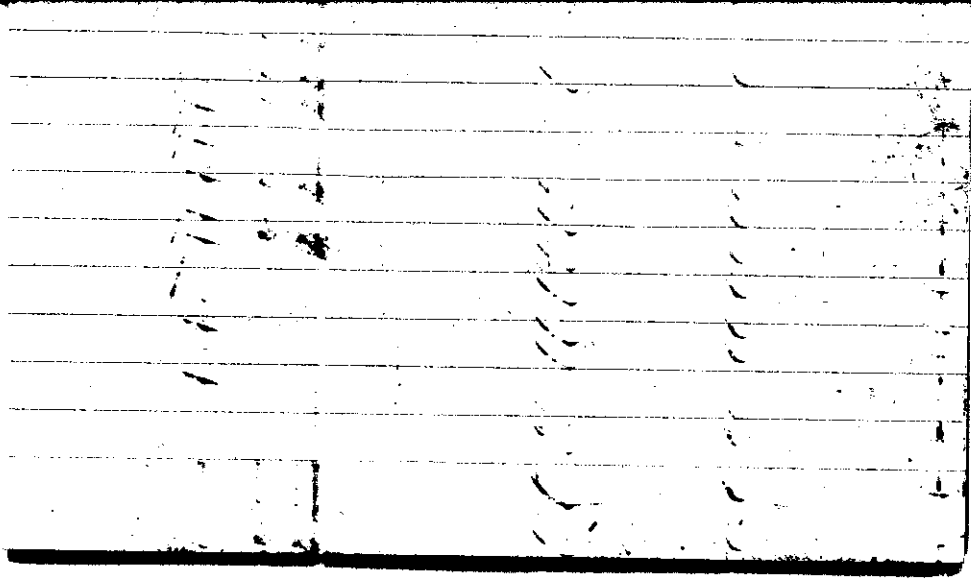
Max. 69.2	Wind F NW 1	Barom. t 71	General Obs. ∞ 0700 14 ^h @ -15 ^h	
Min. 50.0	Vis. km. 13	p 29.18		
Dry 50.0	Clouds 9	p (red.) 29.07		
Wet	ci fil sc			
R.H. 97		Morn. cloudy	Foren. cloudy	
Precip. mm/ T in.		Noon cloudy	Aftern. fair (ci, cir, cc, cs, ncb)	
Snowfall/-Depth — in/ — in.		Eve.	Night	



STATE COLLEGE, Pa. Date OCT 21 1941

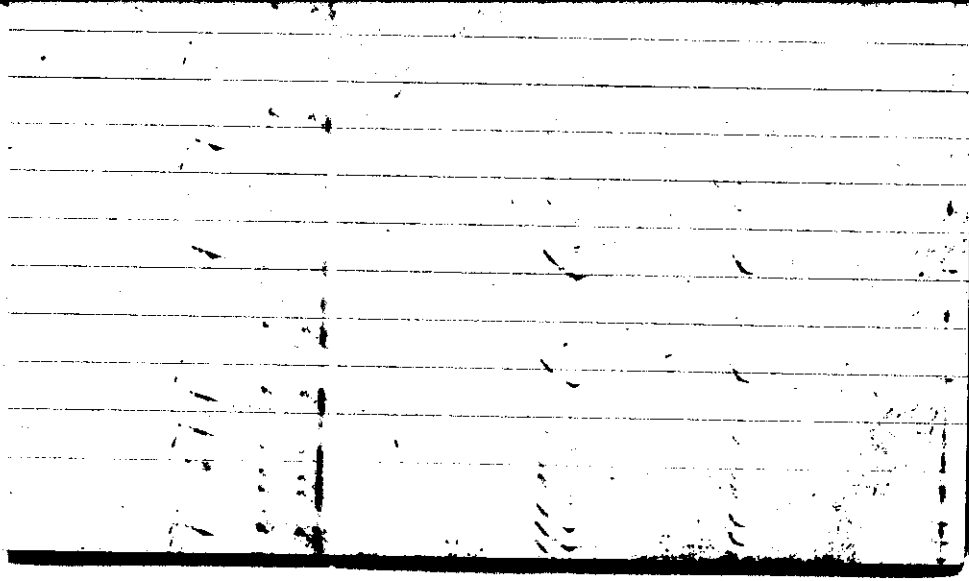
Time
0700

Max. 64.7	Wind F W 1	Barom. t 72	General Obs. 0630 - 2 0630	
Min. 45.3	Vis. km. $\frac{1}{2}$	p 28.80		
Dry 46.4	Clouds X	p(red.) 28.69		
Wet	unknown			
R.H. 98		Morn. overcast fog	Foren. cloudy (c floc si fil)	
Precip. — mm/ — in.		Noon cloudy	Aftern. cloudy	
Snowfall/-Depth — in/ — in.		Eve. cloudy	Night fair	



STATE COLLEGE, Pa. Date **OCT 22 1941**Time
0700

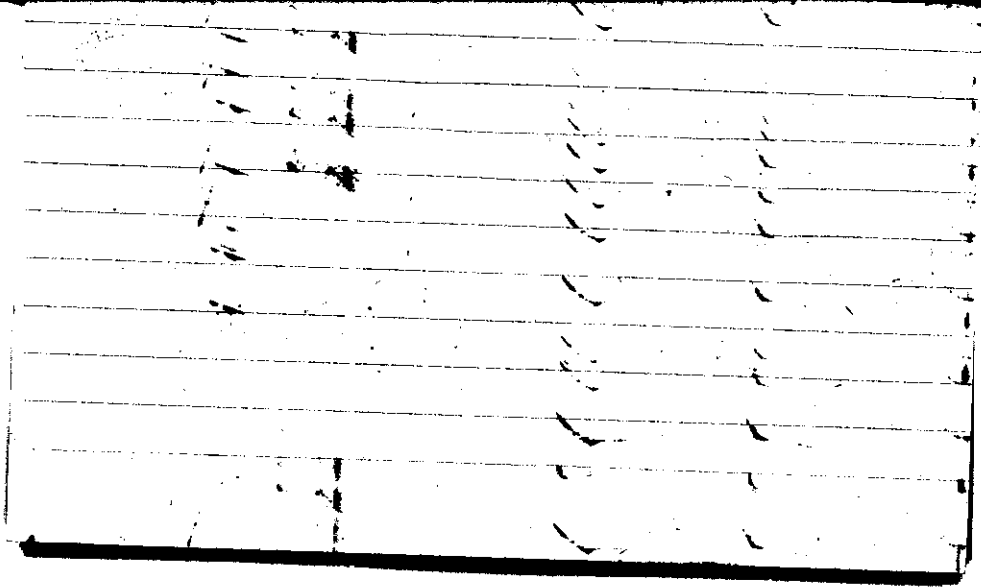
Max. 68.0	Wind F SW 1	Barom. t 72	General Obs. ∞° 0645 ∞° 0645
Min. 43.3	Vis.km. 24	p 29.04	
Dry 45.1	Clouds 9	p(red.) 28.93	
Wet	SC		
	AC		
R.H. 99		Morn. cloudy	Foren. cloudy to partly cloudy
Precip. — mm/ — in		Noon fair	Aftern. fair (ci flocc; ci den)
Snowfall/-Depth — in/ — in		Eve. fair	Night fair



STATE COLLEGE, Pa. Date **OCT 23 1941**

Time
0700

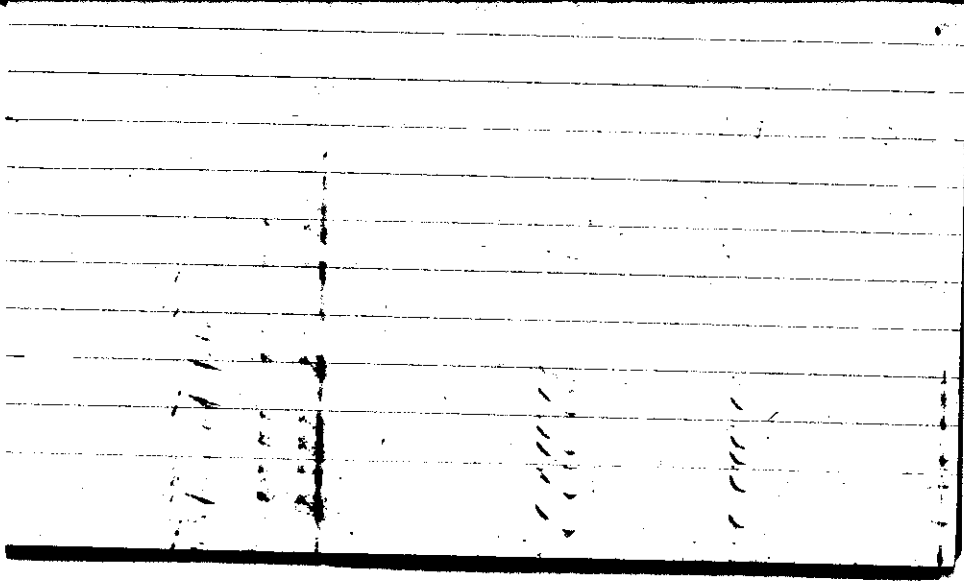
Max. 64.5	Wind F W 4	Barom. t 72	General Obs. 00' 0113
Min. 45.2	Vis. km. 13	P 28.70	8 ²⁰ - 8 ²² ; 8 ³⁵ - 8 ⁵⁵ 1240 - 1245
Dry 52.8	Clouds 10	p (red.) 28.59	
Wet	as sc		
R.H. 88		Morn. cloudy	Foren. cloudy
Precip. mm/ — in.		Noon cloudy	Aftern. partly cloudy
Snowfall/-Depth — in/ — in.		Eve. fair (ci floe ci fell)	Night fair



STATE COLLEGE, Pa. Date **OCT 24 1941**

Time
0700

Max. 64.5	Wind F W 2	Barom. t 70.	General Obs. d' 0700
Min. 35.1	Vis. km. 32	p 28.98	(10) 14:15-1530
Dry 36.5	Clouds 1	p(red.) 28.87	
Wet	ci pol ci den		
R.H. 88	FC	Morn. ci denus	Foren. ci flacc fair ci pra ci den
Precip. 1.5 mm / .06 in.		Noon partly cloudy	Aftern. partly cloudy
Snowfall / -Depth — in / — in.		Eve. partly cloudy	Night partly cloudy



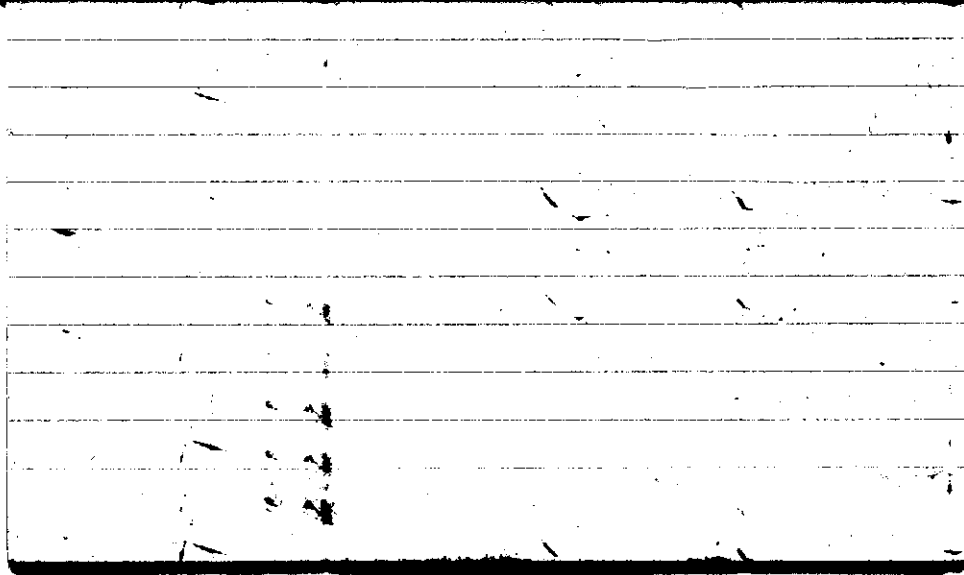
STATE COLLEGE, Pa. Date

OCT 26 1941

Time

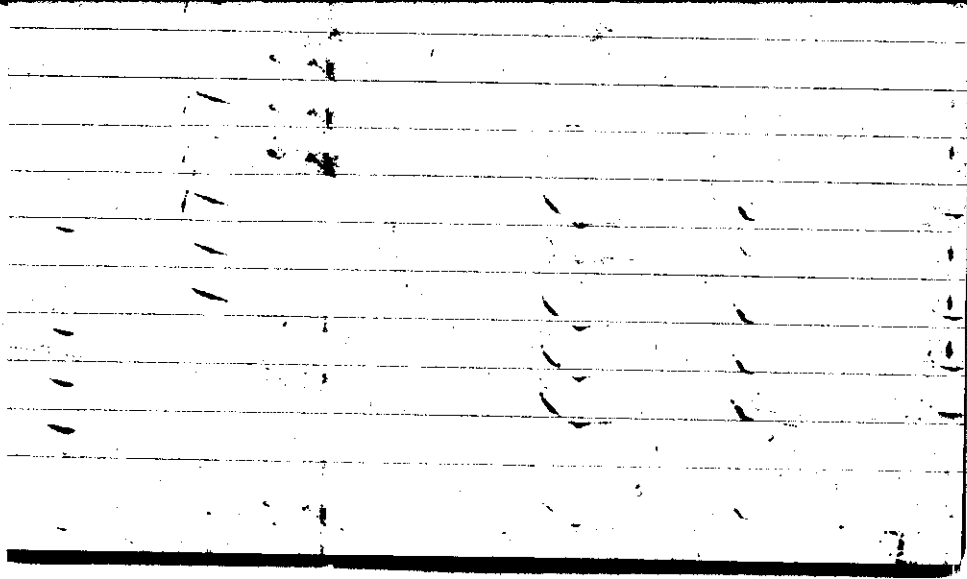
0700

Max. 59.9	Wind P W 2	Barom. t 70	General Obs. 1000-1045 ☺	
Min. 35.9	Vis. km. 32	p 28.79		
Dry 40.1	Clouds 5	p(red.) 28.68		
Wet	ci flocc ac			
R.H. 62		Morn. partly cloudy	Foren. partly cloudy	
Precip. — mm/ — in.		Noon "	Aftern. "	
Snowfall/-Depth — in/ — in.		Eve. fair	Night fair	



STATE COLLEGE, Pa. Date **OCT 26 1941**Time
0700

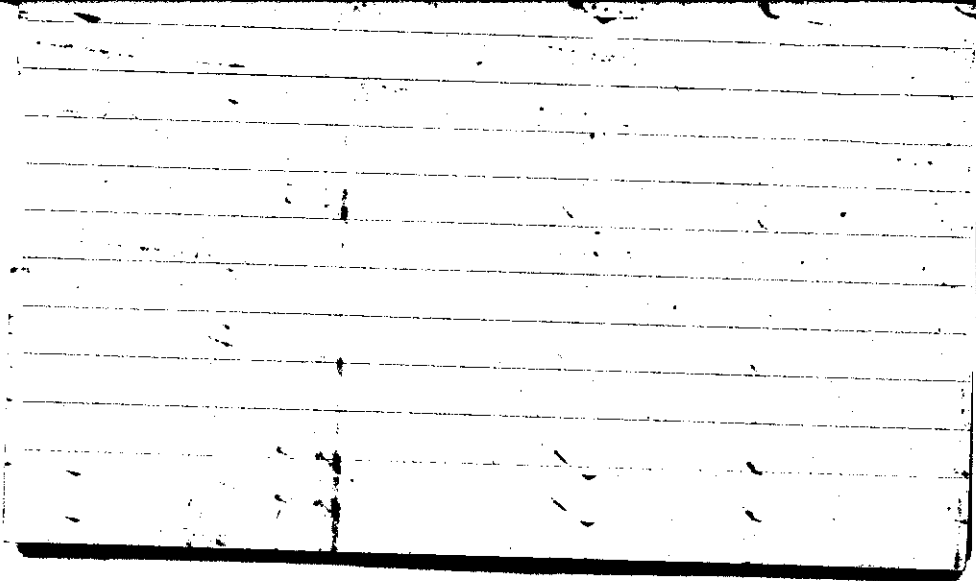
Max. 51.0	Wind P W 1	Barom. t 68	General Obs. ☐' 0700 ∞° 0700 ☉ 0800-1600	
Min. 29.0	Vis. km. 13	p 29.02		
Dry 30.0	Clouds 5	p(red.) 28.92		
Wet	ci den ci fil ci gra			
R.H. 92		Morn. fair	Foren. fair	
Precip. — mm/ — in.		Noon partly cloudy	Aftern. partly cloudy	
Snowfall/-Depth — in/ — in.		Eve. fair	Night fair	



STATE COLLEGE, Pa. Date **OCT 27 1941**

Time
07:30

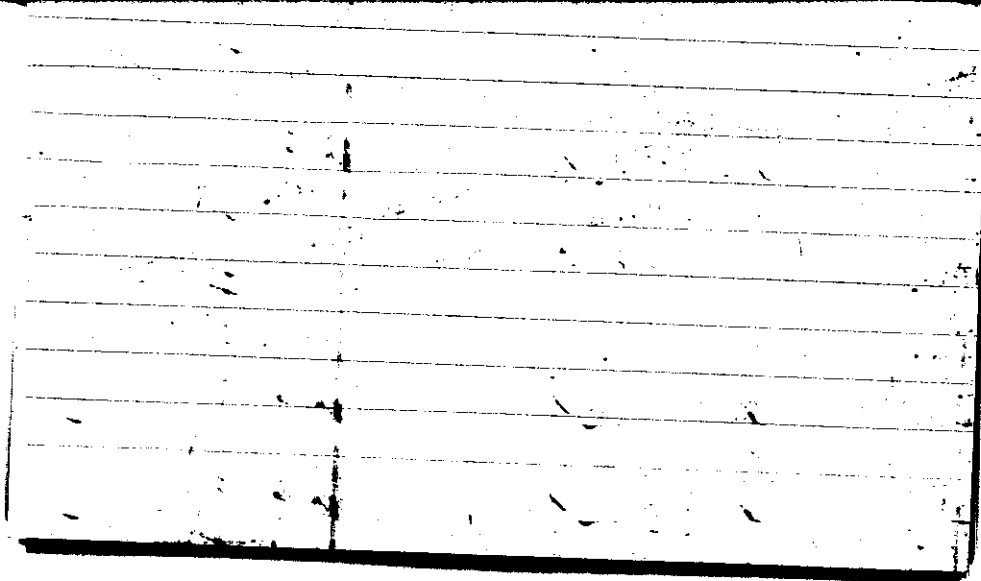
Max. 55.0	Wind F W 4	Barom. t 69	General Obs. ∞° 2700 18h
Min. 30.4	Vis. km. 16	p 28.74	●° 255-1:00 1842 6. -1930
Dry 53.1	Clouds 9	p (red.) 28.63	●° 2476-1:30
Wet	ac		
R.H. 51		Morn. cloudy	Foren. cloudy
Precip. mm/ -- in.		Noon "	Aftern. "
Snowfall/-Depth in/ -- in.		Eve. (ac, fsc, ca, neb) cloudy ci flacc ci fil	Night cloudy



STATE COLLEGE, Pa. Date **OCT 28 1941**

Time
D705

Max. 60.4	Wind F NW 1	Barom. t 71	General Obs. 0° 0000-1400	
Min. 45.0	Vis. km. 24	p 28.81		
Dry 45.0	Clouds 10 SC	p(red.) 28.70		
Wet				
R.H. 83		Morn. cloudy	Foren. cloudy	
Precip. 5.8 mm / 0.23 in.		Noon cloudy	Aftern. partly cloudy	
Snowfall/-Depth — in / — in		Eve. partly cloudy	Night cloudy	

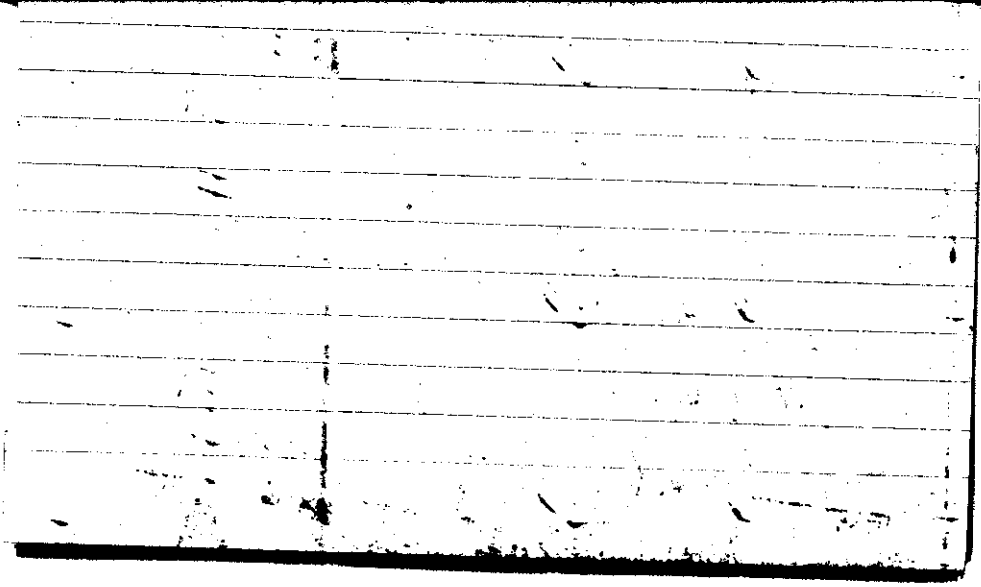


STATE COLLEGE, Pa. Date

OCT 29 1941

Time
0700

Max. 45.6	Wind F N 1	Barom. t 67	General Obs. 11° 0645 ∞ 0645
Min. 28.5	Vis. km. 50	p 29.34	11 ^h ☉ 13 ^h ☉
Dry 29.0	Clouds < 1	p(red.) 29.24	-- 15 ^h
Wet	ci den. ci flow.		
R.H. 73		Morn. ci fid fair ci unc	Foren. fair ci pre
Precip. — mm/ — in.		Noon fair	Aftern. partly cloudy
Snowfall/-Depth — in/ — in.		Eve. cloudy	Night cloudy



STATE COLLEGE, Pa. Date **OCT 30 1941**Time
0700

Max. 47.3	Wind F S 2	Barom. t 68	General Obs. • ° 5:30-5:35 ∞° 0700 • ° 1130-1155	
Min. 29.2	Vis. km. 14	p 29.27		
Dry 40.5	Clouds 9	p(red.) 29.17		
Wet	ac ac			
R.H. 62		Morn. cloudy	Foren. cloudy	
Precip. — mm/hrs in.		Noon overcast, rain	Aftern. overcast to cloudy	
Snowfall/-Depth — in/ — in.		Eve. cloudy to overcast	Night overcast	

