

STATE COLLEGE, Pa. Date

FEB - 1 1942

Time  
0700

Max. 36	Wind F NW 7	Barom. t 66	General Obs. 1x/° 0730-2000
Min. 25	Vis. km. 30	p 28.40	
Dry 25	Clouds 10	p(red.) 28-30	
Wet	sc		
R.H. 65			
Precip. 10.4 mm / 0.41 in.		Morn. <i>ovc mwp.</i>	Foren. <i>ovc to cdy mwp.</i>
Snowfall/-Depth T in / T in.		Noon <i>ovc *</i>	Aftern. <i>ovc *</i>
		Eve. <i>ovc *</i>	Night <i>ovc *</i>

Tarant

-2

/

-2

2

-2.0

2.0

STATE COLLEGE, Pa. Date

FEB - 2 1942

Time  
0700

Max. 28	Wind F NW 4	Barom. t 66	General Obs. <input checked="" type="checkbox"/> T 0700 *° 0030 - 0630	
Min. 15	Vis. km. 80	P 28.75		
Dry 15	Clouds 7	p (red.) 28.65		
Wet	cc Ac Fc			
R.H. 65		Morn. wdy cc	Foren. cldy to pky cldy w fil fere.	
Precip. mm/ T in.		Noon pky cldy (m)	Aftern. pky cldy	
Snowfall/-Depth T in/ T in.		Eve. pky cldy	Night pky cldy	



STATE COLLEGE, Pa. Date

FEB - 3 1942

Time

0700

Max. 20	Wind F W 2	Barom. t 66	General Obs.
Min. 1	Vis. km. 60	p 29.16	
Dry 2	Clouds 3	p (red.) 29.06	
Wet	cc a' vert Fc		
R.H. 66		Morn. fair w/ light cc. a' bout 4:00	Foren. fair
Precip. mm/ / in		Noon clear	Aftern. clear
Snowfall/-Depth in/ / in		Eve. clear	Night clear to dly

[Tiflis] (1)

-8

7  
6

< 1.00

-8.0 8.0

(2)

+13

+13

13

+6.5

6.5

STATE COLLEGE, Pa. Date

FEB - 4 1942

Time

0700

Max. 21	Wind F calm	Barom. t 67	General Obs. 00°
Min. 1	Vis. km. 5	p 29.11	* 2130-2400
Dry 17	Clouds 10	p(red.) 29.01	
Wet	Ac		
R.H. 63		Morn. <i>ov - dr</i>	Foren. <i>ov</i>
Precip. mm / in.		Noon <i>ov</i>	Aftern. <i>ov</i>
Snowfall/-Depth in / in.		Eve. <i>ov</i>	Night <i>ov snow</i>

Final

-1	6		136
-2	1		-33
-4	3		
1	1		+36
0	0	1	
0	1		+3
-2	0		
2	-4		69
4	1		+0.1
1	3		
0	-7		
1	-1		1.9
1	0		
1	6		
1	0		
1			
1			
5			



STATE COLLEGE, Pa. Date

FEB - 5 1942

Time

0700

Max. 33	Wind F ENE 1	Barom. t 69	General Obs. ☑ 4.3"
Min. 17	Vis. km. 5	p 28.62	* 3000 - 1700
Dry 27	Clouds 10 Ns	p(red.) 28.52	? 1630 - 2030
Wet			
R.H. 98		Morn. <i>ov *</i>	Foren. <i>ov mnd</i>
Precip. 8.0 mm / 0.32 in.		Noon <i>ov mnd</i>	Aftern. <i>ov mnd - driz</i>
Snowfall/-Depth 4.3 in / 4.3 in.		Eve. <i>ov driz</i>	Night <i>ov</i>

+ 6 8					
Toledo (48) - 29 + 97				136	+1.4 2.6
-4	6	-1	0		
-1	8	-2	-1		18)
-1	0	-1	-		
1	2	3	-		-24
4	-4	3	-1		+5
2	8	3	-		
2	2	0	-1		-19
-5	2	0	-3		
0	2		-2		29
5	1		-2		
6	-1		-2		-1.1
0	6		-1		
-6	2		5		1.6
3	4		-1		
0	4		-1		
-2	3		-1		
2	0		0		
8	1		0		
-1	2				
0	0				

STATE COLLEGE, Pa. Date

FEB - 6 1942

Time  
0705

Max. 36	Wind F calm	Barom. t 70	General Obs. = <input checked="" type="checkbox"/> 44	
Min. 27	Vis. km. 6	p 28.70	• 1530 - 2400	
Dry 35	Clouds 10	p (red.) 28.59		
Wet	St			
R.H. 97		Morn. over fog	Foren. over fog	
Precip. 1.8 mm / 0.01 in.		Noon over fog	Aftern. over rain	
Snowfall / -Depth T in / 4.0 in.		Eve. over rain	Night over rain	

- Spokane (6) <sup>+1</sup> -15 +16 31 +0.2 5.2

-4  
-3  
9  
5  
-8  
2

STATE COLLEGE, Pa. Date

FEB - 7 1942

Time

0705

Max. 38	Wind F calm	Barom. t 72	General Obs. <input checked="" type="checkbox"/> 2.5" 1.1" new snow	
Min. 32	Vis. km. 3	p 28.19	• 0000 - 0300 = 0700	
Dry 32	Clouds 10	p(red.) 28.08	* 0300 - 2400	
Wet	Ns			
R.H. 100		Morn. over snow fog	Foren. over snow	
Precip. 12.0 mm / 0.47 in.		Noon over snow	Aftern. over snow	
Snowfall/-Depth 1.1 in / 2.5 in.		Eve. over -	Night	

+ 63

Stonyhurst (22) -9 + 72 81

+ 2.9 3.7

0	2	3	
6	3	0	
4		3	
-3		3	+ 15
1		0	+ 15
4		0	15
-2			+ 2.5
8			2.5
3			
6			
8			
-2			
4			
-2			
4			
4			
0			
8			
4			
3			

STATE COLLEGE, Pa. Date

FEB - 8 1942

Time

0700

Max. 35	Wind F NW 5	Barom. t 70	General Obs. $\pm 2.5''$ $2.5''$ narrow	
Min. 24	Vis. km. 20	p 28.53	*000 - 0300 h <sup>p</sup> 0710 - 2000	
Dry 25	Clouds 10	p (red.) 28.42		
Wet	st			
R.H. 76		Morn. <i>overcast</i>	Foren. <i>overcast</i>	
Precip. 3.6 mm / 0.14 in.		Noon <i>overcast</i>	Aftern. <i>clear</i>	
Snowfall / -Depth 0.5 in / 2.5 in.		Eve. <i>clear</i>	Night <i>clear to partly clear</i>	

-151

- Strasburg (75) - 203 + 52, 255 -2.0 3.4

-3	4	-7	-8	0	-1				
3	-1	-6	-7	2	2				22
-3	-3	-1	-1	2					
-2	-7	1	-3	0					-10
0	-8	2	-2	1					
-9	-1	-7	-2	4					+34
4	1	1	-4	0					
-3	-6	-4	-1	-1					+24
1	-1	-4	-1	-2					
5	-2	-4	-7	2					44
-1	1	-3	-1	0					
2	-4	1	-2	0					+1.1
3	1	-4	-2	4					
2	-2	-6	-1	3					2.0
-8	3	-5	-4	7					
-9	-1	-3		2					
8	-5	-4		0					
-4	0	-4		-4					
-1	7	-3		-2					
-6	-3	-1		0					



STATE COLLEGE, Pa. Date

FEB - 9 1942

Time

0700

Max. 25	Wind F NW 4	Barom. t 68	General Obs. <input checked="" type="checkbox"/> 2*
Min. 7	Vis. km. 25	p 29.08	
Dry 7	Clouds 0	p (red.) 28.98	
Wet			
R.H. 70		Morn. <i>clear</i>	Foren. <i>clear</i>
Precip. mm/ T in.		Noon <i>fair in foren</i>	Aftern. <i>fair as well</i>
Snowfall/-Depth T in/ 2.0 in.		Eve. <i>fair in foren, pe 2nd. pra, mnc clear</i>	Night <i>pk, clear to dly</i>

Stuttgart

-2	0		(25)
-1	-4		-46
0	-2		
-1	5		+10
1			
-6			-36
3			
0			56
-1			
-2			-14
0			
-5			2.2
1			
-2			
-2			
-4			
-7			
-1			
-1			

STATE COLLEGE, Pa. Date

FEB 10 1942

Time

0700

Max. 29	Wind F NE 3	Barom. t 71	General Obs. $\boxtimes$ 1.9° *° 1025	
Min. 6	Vis. km. 40	p 29.04	$\blacktriangle$ 14:30 foggy drizzle rain - 1700	
Dry 17	Clouds 9	p(red.) 28.93	*° 1700 - 2200	
Wet	as as			
R.H. 46	as as	Morn. clgy	Foren. ovc	
Precip. mm/ / in.		Noon ovc	Aftern. ovc	
Snowfall/-Depth - in/ 1.9 in.		Eve. ovc	Night ovc	

Scores by Simon (21) -3 + 112 115 + 5.2 5.5

9	7	3				
9		1				14)
2		4				
-3		3				-21
1		0				+ 14
7		3				
5		3				- 7
9		1				
1		2				35
6		7				
7		0				-0.5
4		1				
7		4				2.5
8						
7						
6						
8						
0						

STATE COLLEGE, Pa. Date

FEB 11 1942

Time  
0705

Max. 26	Wind F calm	Barom. t 70	General Obs. = 0 <input checked="" type="checkbox"/> 1.9"	
Min. 11	Vis. km. 3	p 28.75	Δ 0500-0700; 0930-1030; 1/2 <sup>o</sup> 1400-1800	
Dry 26	Clouds 10	p (red.) 28.64		
Wet	As Fs			
R.H. 97		Morn. over freezing rain	Foren. cly to over	
Precip. 0.5 mm / 0.01 in.		Noon cly to over	Aftern. cly to over	
Snowfall/-Depth T in / 1.9 in.		Eve. cly	Night cly	

= Sebastopol (2) -5<sup>-5</sup> / 5 -2.5 2.5  
-2  
-3

STATE COLLEGE, Pa. Date

FEB 12 1942

Time

0705

Max. 33	Wind F NW 2	Barom. t 70	General Obs. <input checked="" type="checkbox"/> 1.6"	
Min. 15	Vis. km. 40	p 28.81		
Dry 15	Clouds 8	p(red.) 28.70		
Wet	Ac As			
R.H. 57	4 from	Morn. <i>dry</i>	Foren. <i>pty dry</i>	
Precip. mm/ T in.		Noon <i>pty dry</i>	Aftern. <i>pty dry to clear</i>	
Snowfall/-Depth T in/ 1.6 in.		Eve. <i>clear</i>	Night <i>clear</i>	

-6

$\frac{-8}{2}$ 
(2)
-8
+2
10
-3.0
5.0

(2)

-1

/

-1

1

-0.5

0.5



STATE COLLEGE, Pa. Date FEB 13 1942

Time  
0700

Max. 26	Wind F WNW 3	Barom. t 67	General Obs. $\Sigma$ 1.6" 0700 } 10° in front of AC! -0730 0730 x° -0830
Min. 13	Vis. km. 25	p 28.96	
Dry 14	Clouds 7	p (red.) 28.86	
Wet	Ac		
R.H. 75	Sc		
Precip.	mm/ / in	Morn. pty cly to cly	Foren. cly
Snowfall/ -Depth	/ in/ 1.6 in.	Noon cly to pty cly	Aftern. pty cly - fair
		Eve. pty cly to fair	Night



STATE COLLEGE, Pa. Date FEB 14 1942

Time  
0700

Max. 31	Wind F W 3	Barom. t 69	General Obs. <input checked="" type="checkbox"/> 1.6"	
Min. 14	Vis. km. 8	p 29.03	* 0645-0800 0710-0730 $\frac{1}{10}$ " below A	
Dry 23	Clouds 8	p(red.) 28.92		
Wet	Ac Sc			
R.H. 76		Morn. dry	Foren. dry - ptly dr	
Precip. mm/ T in		Noon ptly dr	Aftern. ptly dr to fair	
Snowfall/-Depth T in/ 1.6 in		Eve. fair	Night fair	



STATE COLLEGE, Pa. Date

FEB 15 1942

Time

0700

Max. 35	Wind F calm	Barom. t 71	General Obs. $\boxtimes$ 1.9" =
Min. 23	Vis. km. 2	P 28.90	*° 0430-1000
Dry 29	Clouds 10	p(red.) 28.79	$\Delta$ 1000-1530
Wet	Ns		•° 1645-1745
R.H. 97		Morn. <i>ovc</i>	Foren. <i>ovc - dust</i>
Precip. 0.03 mm/ 0.01 in.		Noon <i>ovc</i>	Aftern. <i>ovc</i>
Snowfall/-Depth 0.3 in/ 1.9 in.		Eve. <i>ovc</i>	Night <i>ovc</i>

St. Anne (1) -1 / 1 -1.0 1.0

STATE COLLEGE, Pa. Date FEB 16 1942

Time

0700

Max. 37	Wind F calm	Barom. t 72	General Obs. <input checked="" type="checkbox"/> 2.5" 0° ; 0400-0530
Min. 29	Vis. km. 4	p 28.81	0° 1210 - 2400
Dry 35	Clouds 10	p (red.) 28.70	
Wet	As		
R.H. 82		Morn. <i>ov</i>	Foren. <i>ov</i>
Precip. 1.5 mm / 0.06 in.		Noon <i>ov</i>	Aftern. <i>ov</i>
Snowfall/-Depth 0.6 in / 2.5 in.		Eve. <i>ov</i>	Night <i>ov</i>

Santa Barbara

3  
1  
3  
4  
1  
6  
7  
3

19

—  
+ 32  
+ 32  
32  
+ 3.6  
3.6



STATE COLLEGE, Pa. Date

FEB 17 1942

Time

0655

Max. 43	Wind F W 3	Barom. t 73	General Obs. ☒ T =	
Min. 34	Vis. km. 4	p 28.28	0000 - 0130 °	
Dry 43	Clouds 10	p (red.) 28.17	0520 - 0630 °	
Wet	Sc Ns Ac		0700 - 0705 °	
R.H. 96		Morn. <i>ovc to cldy</i> <i>cc air flow</i>	Foren. <i>ovc to cldy</i>	
Precip. 7.0 mm / 0.28 in.		Noon <i>ovc</i>	Aftern. <i>ovc</i>	
Snowfall / -Depth - in / T in.		Eve. <i>cldy + ptly cldy</i>	Night <i>ovc</i>	

- Santa Clara (1) - <sup>+4</sup> +4 4 +4.0 4.0  
4

STATE COLLEGE, Pa. Date

FEB 18 1942

Time

0655

Max. 45	Wind F W 2	Barom. t 72	General Obs. <input checked="" type="checkbox"/> T <input type="checkbox"/> O
Min. 23	Vis. km. 40	p 28.89	* 1915-2100
Dry 23	Clouds 1	p(red.) 28.78	
Wet	<i>ci fca</i>		
R.H. 67		Morn. <i>fca</i>	Foren. <i>fca</i>
Precip. mm/ T in.		Noon <i>pty clg</i>	Aftern. <i>pty clg to dry</i>
Snowfall/-Depth T in/ T in.		Eve. <i>ovc</i>	Night <i>ovc</i>

St. Helena (1) <sup>-5</sup> -5 / 5 -5.0 5.0.  
-5

Blank lined paper for notes.

STATE COLLEGE, Pa. Date

FEB 19 1942

Time

0705

Max. 39	Wind F W 4	Barom. t 72	General Obs. $\infty$ $\approx 0.5''$
Min. 7	Vis. km. 12	p 28.90	* 0000 - 0330 1020 - 1200 6 0710 - 0715
Dry 7	Clouds 3	p (red.) 28.79	H <sup>o</sup> 1400 - 1500
Wet	Fog		
R.H. 66		Morn. pty clg	Foren. clg
Precip. 1.0 mm / 0.04 in.		Noon clg	Aftern. clg - pty clg
Snowfall / -Depth 0.5 in / 0.5 in.		Eve. pty clg	Night pty clg

+21

San Juan (7) -1 + 22 23 + 3.0 3.3

0	4	1		36)
1	1	1	5	
4	0	9		-39
7	0	1	2	
8	1		3	+79
-1	4	4		
2	1	4	2	+40
	5	2		
	3	0		118
	4	5		
	0	4		+1.1
	6	1	4	
	5	3		3.3
	9	7		
	1	2		
	5			
	6			
	0			
	8			

STATE COLLEGE, Pa. Date

FEB 20 1942

Time  
0700

Max.	16	Wind F W 5	Barom. t 67	General Obs. <del>2</del> 0.5"
Min.	4	Vis. km. 8	p 28.84	(X)° 1340-2300
Dry	8	Clouds 9	p(red.) 28.74	
Wet		Ac Sc		
R.H.	67		Morn. <i>dy</i>	Foren. <i>dy</i>
Precip.	mm/ T in.		Noon	Aftern.
Snowfall/-Depth	T in/ 0.5 in.		Eve.	Night

- Saskatoon (1) <sup>-4</sup> -4 / 4 -4.0 4.0  
-4 3 (1)

+3  
+3  
3  
+3.0  
3.0



STATE COLLEGE, Pa. Date FEB. 21 1942

Time

0700

Max. 20	Wind F NW 6	Barom. t 64	General Obs. <del>0.5</del> 0700 * 0730-0900
Min. 7	Vis. km. 30	p 28.82	1/4" 1000-1400 1830-2000
Dry 14	Clouds 10	p(red.) 28.73	
Wet	Sc		
R.H. 55		Morn. <i>ov</i>	Foren. <i>cl</i>
Precip. mm/ T in.		Noon <i>cl</i>	Aftern.
Snowfall/-Depth T in/ 0.5 in.		Eve.	Night

<del>Reykjavik</del> France							
Strasbourg	109	-287	+82	-205	369	-1.9	3.4
Breancon	35	-56	+26	-30	82	-0.9	2.3
Grenoble	3	-1	+2	-10	3	+0.3	1.0
Marseille	10	-12	+30	+18	42	+1.8	4.2
Paris	90	-194	+69	-125	263	-1.4	2.9

(247) -550 +209 -341 259 -1.4 3.1

STATE COLLEGE, Pa. Date FEB 22 1942

Time

0700

Max. 22	Wind F WNW 6	Barom. t 67	General Obs. <input checked="" type="checkbox"/> T * 0 200 - 1400 2200 - 2400	
Min. 14	Vis. km. 13	p 28.78		
Dry 17	Clouds 10	p(red.) 28.68		
Wet	Sc			
R.H. 70		Morn. <i>over</i>	Foren. <i>over to ddy</i>	
Precip. mm/ T in.		Noon <i>over - ddy</i>	Aftern. <i>over</i>	
Snowfall/-Depth Tin/ T in.		Eve. <i>ddy</i>	Night <i>ddy</i>	



STATE COLLEGE, Pa. Date FEB 23 1942

Time  
0700

Max. 26	Wind F NW S	Barom. t 66	General Obs. <input checked="" type="checkbox"/> T
Min. 17	Vis. km. 16	p 28.69	0000-1000 1530-1800 2230-2300
Dry 20	Clouds 10	p(red.) 28.59	
Wet	Sc		
R.H. 70		Morn. <i>over</i>	Foren. <i>over to clear</i>
Precip. mm/ T in.		Noon <i>clear</i>	Aftern. <i>clear</i>
Snowfall/-Depth T in/ T in.		Eve. <i>ptly clear to fair</i>	Night <i>fair</i>

Greece

Athens 20 -64 +20 -44 84 -2.2 4.2

STATE COLLEGE, Pa. Date

FEB 24 1942

Time

0700

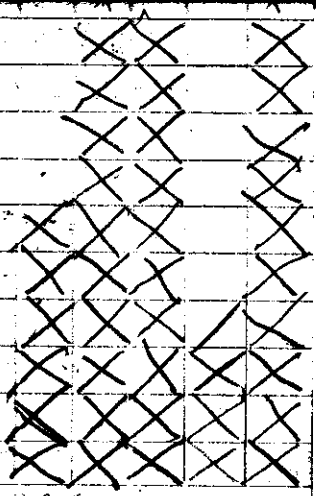
Max.	30	Wind F NNE 2	Barom. t 68	General Obs. <input type="checkbox"/> <input checked="" type="checkbox"/> T  1140 $\odot$ 1100 $\odot$
Min.	12	Vis. km. 50	p 28.55	
Dry	13	Clouds 1	p(red.) 28.45	
Wet		ci fne Ac		
R.H.	71		Morn. fair	Foren. fair ci fne, i pra
Precip.	mm/ T in.		Noon "	Aftern. "
Snowfall/-Depth	T in/ T in.		Eve. "	Night dy

1435 Round

147 Station [1918-32  
192 Station]

79 3-grades [7]

1930-32  
in figures  
200-20 N, 60-100 W





STATE COLLEGE, Pa. Date FEB 25 1942

Time

0700

Max. 34	Wind F NW 4	Barom. t 70	General Obs. <input checked="" type="checkbox"/> T	
Min. 12	Vis. km. 11	p 28.55	* $\Delta$ 0800-0830	
Dry 21	Clouds 8	p(red.) 28.44	/ * 0830-1130 ; 1330-2300	
Wet	Sc			
R.H. 74		Morn. <i>cl</i>	Foren. <i>cl</i>	
Precip. / mm / in.		Noon	Aftern.	
Snowfall / -Depth in / T in.		Eve.	Night <i>ov</i>	

	9
	5-
	7
	0
	2
	0
	3-
	3
	8
	0
	6-
	8
	-4
	2
	7
	-8
	-2
	7
	-8
4.2	Form 7. (20) - 55 + 30 85

STATE COLLEGE, Pa. Date

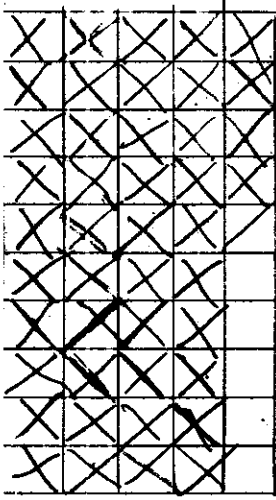
FEB 26 1942

Time  
0700

Max. 29	Wind F NW 4	Barom. t 67	General Obs. <input type="checkbox"/> T <input checked="" type="checkbox"/>
Min. 21	Vis. km. 70	p 28.57	X° 0100 - 1500 ! 0655-0705 below Sc!
Dry 22	Clouds 8	p(red.) 28.47	
Wet	Sc Cu cong.		
R.H. 72	Fog	Morn. <i>clgy</i>	Foren. <i>clgy</i>
Precip. mm/ T in.		Noon "	Aftern. <i>clgy to pty clgy</i>
Snowfall/ -Depth T in/ T in.		Eve. <i>pty clgy - fair</i>	Night <i>fair</i>

1930-32

R. 210



89 Equations 20-59.9°N

(24) 140-180 E

19.7 Stations +[27]

2965 Residuals

+ [22]

2987

STATE COLLEGE, Pa. Date FEB 27 1942

Time

0700

Max. 34	Wind F WNW 5	Barom. t 7)	General Obs. <input checked="" type="checkbox"/> T 0700 *1° 0500 - 2400
Min. 20	Vis. km. 3	p 28.39	
Dry 26	Clouds 10	p (red.) 28.28	
Wet	St		
R.H. 83		Morn. <i>ovc</i>	Foren. <i>cl</i>
Precip. mm/ T in.		Noon <i>cl</i>	Aftern. <i>ovc</i>
Snowfall/-Depth T in/ T in.		Eve. <i>ovc</i>	Night <i>ovc</i>

1	3
2	3
3	3
4	3
5	3
6	3
7	3
8	3
9	3
10	3
11	3
12	3
13	3
14	3
15	3
16	3
17	3
18	3
19	3
20	3
21	3
22	3
23	3
24	3
25	3
26	3
27	3
28	3
29	3
30	3
31	3
32	3
33	3
34	3
35	3
36	3
37	3
38	3
39	3
40	3
41	3
42	3
43	3
44	3
45	3
46	3
47	3
48	3
49	3
50	3
51	3
52	3
53	3
54	3
55	3
56	3
57	3
58	3
59	3
60	3
61	3
62	3
63	3
64	3
65	3
66	3
67	3
68	3
69	3
70	3
71	3
72	3
73	3
74	3
75	3
76	3
77	3
78	3
79	3
80	3
81	3
82	3
83	3
84	3
85	3
86	3
87	3
88	3
89	3
90	3
91	3
92	3
93	3
94	3
95	3
96	3
97	3
98	3
99	3
100	3

100  
 99  
 98  
 97  
 96  
 95  
 94  
 93  
 92  
 91  
 90  
 89  
 88  
 87  
 86  
 85  
 84  
 83  
 82  
 81  
 80  
 79  
 78  
 77  
 76  
 75  
 74  
 73  
 72  
 71  
 70  
 69  
 68  
 67  
 66  
 65  
 64  
 63  
 62  
 61  
 60  
 59  
 58  
 57  
 56  
 55  
 54  
 53  
 52  
 51  
 50  
 49  
 48  
 47  
 46  
 45  
 44  
 43  
 42  
 41  
 40  
 39  
 38  
 37  
 36  
 35  
 34  
 33  
 32  
 31  
 30  
 29  
 28  
 27  
 26  
 25  
 24  
 23  
 22  
 21  
 20  
 19  
 18  
 17  
 16  
 15  
 14  
 13  
 12  
 11  
 10  
 9  
 8  
 7  
 6  
 5  
 4  
 3  
 2  
 1  
 0

STATE COLLEGE, Pa. Date FEB 28 1942

Time  
0700

Max. 32	Wind F NW 4	Barom. t 69	General Obs. <input checked="" type="checkbox"/> T
Min. 23	Vis. km. 25	p 28.58	1x/° 0000 - 0700
Dry 25	Clouds 10	p(red.) 28.48	
Wet	Sc		
R.H. 82		Morn. ovc	Foren. ovc
Precip. 0.2 mm/ 0.01 in.		Noon 4	Aftern. 1
Snowfall/-Depth T in/ T in.		Eve. 1	Night 1

	3
	5
	6
	2
	0
	6
	3
	3
	0
	6
	8
	2
	7
	1
	2
	7
	3
	8
	4
	3
	3
	2
	6
	7
	4
	0
	9
	7
	2
	5
	4
Total (33) - 119 + 26 145	
44	