

A.M.

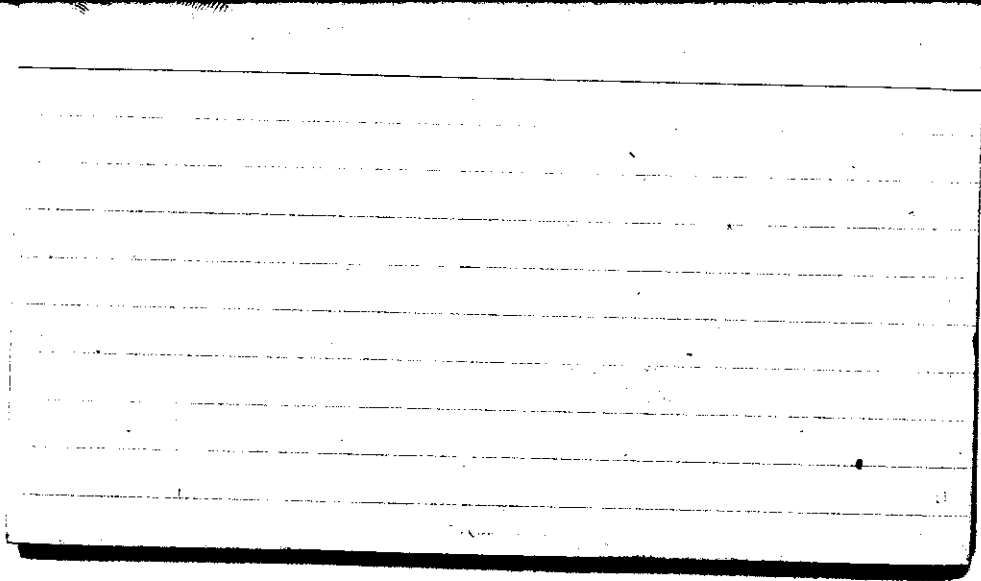
STATE COLLEGE, Pa. Date

AUG - 1 1943

Time

0700

Max. 85	Wind F Calm	Barom. t 83	General Obs. Δ = (Valley Fog)	
Min. 62	Vis. km. 12	28.93	6-1915 - E (cb)) a not d file
Dry 68	Clouds X	28.79	7-1900 - E 7-1200	
Wet 67.8 65.0				
R.H. 86		Morn. Clear	Foren. <i>cu</i> partly cldy	
Precip. — mm/ — in		Noon <i>cu</i> pty cldy	Aftern. cldy cb	
Snowfall/Depth — in/ — in		Eve. Fair \rightarrow pty cb (cb)	Night pty cldy Fair	



STATE COLLEGE, Pa. Date

AUG - 2 1943

Time
0700

Max. 89	Wind F Calm	Barom. t 84	General Obs. = Δ^2 cs fl ca ci pnc 1545-1610
Min. 64	Vis. km. 8	p 28.95	
Dry 67	Clouds X	p (red.) 28.81	
Wet 68.0 65.4			
R.H. 88		Morn. Clear	Foren. Fair Ci fil.
Precip. — mm / — in.		Noon Fair	Aftern. Pth cldy Cs, Ci neb, Ci vert., Cc
Snowfall / -Depth in / — in.		Eve. pty dr Ac ce	Night Fair
A.M.			

Thermopile

STATE COLLEGE, Pa. Date

AUG - 3 1943

Time
0700

Max. 90	Wind F Calm	Barom. t 87	General Obs. a° ☉ 1030 Cs neb
Min. 66	Vis. km. 15	p 28.84	☉ 1320-1325 T 1335-01- R 1340-1455 ☉ 1355-1455 ☉ 1455-1640 ☉ 1640-1645 ☉ 1645-2045 ☉ 2045-2215
Dry 72	Clouds 7	p (red.) 28.69	Cc, Ci flo., Ci fil, Cs neb, Cs dens, Ci pol.
Wet 71.9 68.9	A.c. Ci fil, Cc.		
R.H. 86		Morn. Pth cldy	Foren. cldy
Precip. — mm/ — in.		Noon Pth cldy → cldy	Aftern. cldy R, Rain
Snowfall/-Depth — in/ — in.		Eve. Ovc., Rain	Night Ovc., Rain Light Fog

A.M.

Formados

STATE COLLEGE, Pa. Date

AUG - 4 1943

Time
0700

Max. 88	Wind F Calm	Barom. t 84	General Obs. = 0030-0115-181° 0115-0235-8' 0615-0645-181° 0720-0815-181° 1155-1230-8° 1310-1430-8° 1640-1840-8°	Sp.W.R. 1300-22 Sp.W.R. 1800-75 K 1745-1820 S 2000
Min. 69	Vis. km. 8	p 28.75		
Dry 70	Clouds 10	p(red.) 28.61		
Wet 70.1 69.6	SC			
R.H. 98		Morn. Ovc. Rein	Foren. Cldy Rain	
Precip. 10.4 mm / 0.4 in		Noon Ovc., Rain	Aftern. Ovc., Rain	
Snowfall/Depth in/ in		Eve. Ovc. R Heavy Shower	Night Ovc. → cldy Cldy	

Thunder storm

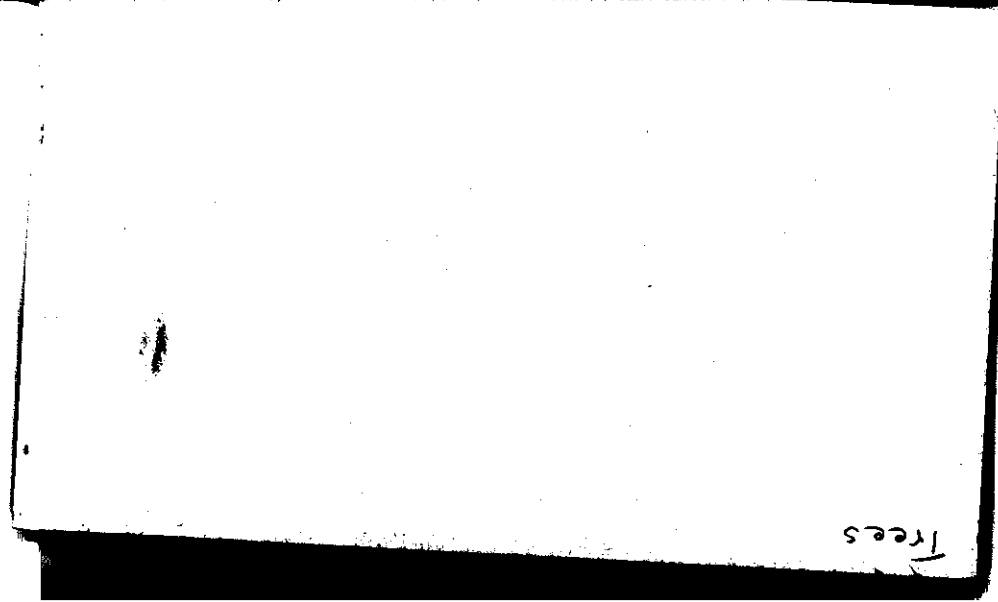
STATE COLLEGE, Pa. Date

AUG - 5, 1943

Time

0700

Max. 80	Wind F WNW 2	Barom. t 82	General Obs. ∞	0700-0713 as from in pt, in place
Min. 69	Vis. km. 13	p 28.77		
Dry 69	Clouds 7	p (red.) 28.63		
Wet 69.2	Ac, Fc, C, f, cl, Acc.		Morn. Ptlly cldy	Foren. Cldy
R.H. 87			Aftern. cldy	
Precip. 24.8 mm / 0.97 in.			Noon Cldy	Night Ptlly cldy → Clear
Snowfall / -Depth — in / — in			Eve. cldy → Ptlly cldy	



rees

STATE COLLEGE, Pa. Date

AUG - 6 1943

Time
0700

Max. 79	Wind F Calm	Barom. t 82	General Obs. -a-	
Min. 56	Vis. km. 16	p 28.99		
Dry 63	Clouds X	p (red.) 28.85		
Wet 60				
R.H. 84		Morn. Clear	Foren. fair	
Precip. — mm/— in.		Noon fair to ptly cldy	Aftern. ptly cldy can	
Snowfall/-Depth in/ in.		Eve. clear	Night Clear	

Hydrology

STATE COLLEGE, Pa. Date

AUG - 7 1943

Time
0700

Max. 81	Wind F WSW 2	Barom. t 78	General Obs. a', - in valley c: file 2046-2100 ●° c -s neb	
Min. 54	Vis. km. 11	p 28.96		
Dry 58	Clouds ← 1 Cpd C/floc	p(red.) 28.83		
Wet 55				
R.H. 80		Morn. Clear → Fair	Foren. clear to fair	
Precip. mm/ in.		Noon fair to pty cl)	Aftern. pty clzy	
Snowfall/Depth in/ in.		Eve. clzy rain	Night clzy → Partly clzy → Fair	

Ultra Violet

STATE COLLEGE, Pa. Date

AUG - 8 1943

Time
0700

Max. 83	Wind F W 2	Barom. t 80	General Obs. ∞ ∞
Min. 58	Vis. km. 10	p 28.86	1805- \bar{y} -1808 ci flc ci pol. ci fcc.
Dry 63	Clouds	p(red.) 28.73	
Wet 59	Feu < 1		
R.H. 79		Morn. Fair \rightarrow Clear	Foren. Clear \rightarrow Fair \rightarrow Pthly clly
Precip. T mm / T in.		Noon Pthly clly	Aftern. Pthly clly.
Snowfall / -Depth in / in.		Eve. Pthly clly	Night Pthly clly \rightarrow Fair

Coast

STATE COLLEGE, Pa. Date

AUG - 9 1943

Time
0700

Max. 85	Wind F Calm	Barom. t 83	General Obs. 0' 00 2300-2400 0°
Min. 58	Vis. km. 12	p 28.86	
Dry 62	Clouds < 1	p (red.) 28.72	
Wet 59	C, G c, g, c, g		
R.H. 84		Morn. Fair → Clear	Foren. pky clgy
Precip. T mm / T in.		Noon pky clgy to clgy	Aftern. clgy
Snowfall / -Depth in / in.		Eve. clgy	Night clgy → overcast → clgy

Vane

STATE COLLEGE, Pa. Date

AUG 10 1943

Time
0700

Max. 84	Wind F 5-1	Barom. t 84	General Obs. = 0100-0200 .0
Min. 62	Vis. km. 3	p 28.73	0245-0255 } B 0300-0400 - .
Dry 71	Clouds 4	p (red.) 28.59	
Wet 69	11<		
R.H. 93		Morn. Pthly. cly	Foren. cly
Precip. 1.5 mm / .05 in.		Noon cly	Aftern cly → Pthly cly.
Snowfall/-Depth — in / — in.		Eve. Pthly cly → Fair	Night Fair → Clear

Valley Winds

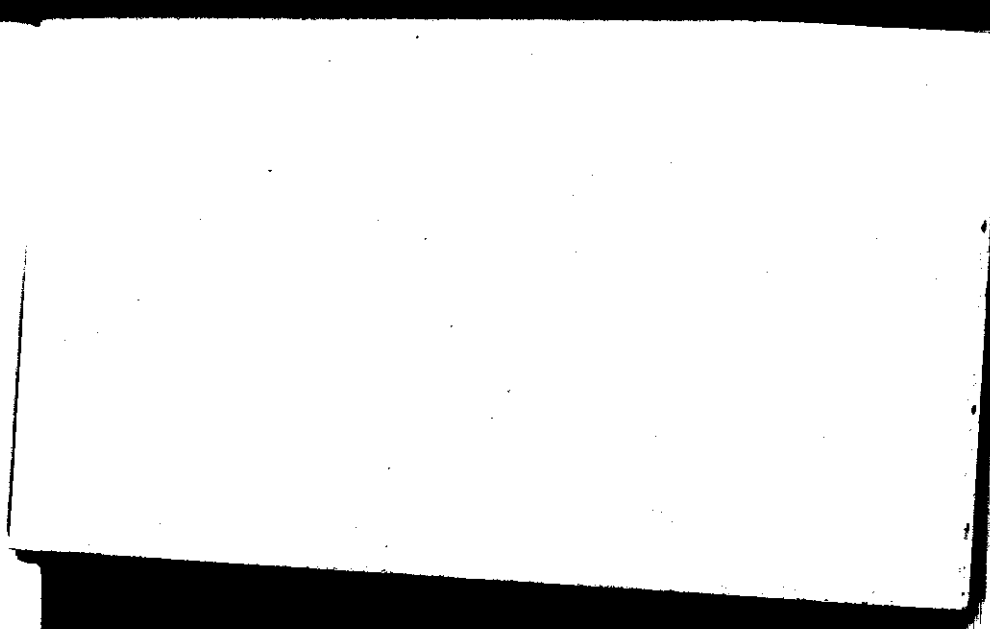
STATE COLLEGE, Pa. Date

AUG 1 1943

Time
0700

Max. 86	Wind F W3	Barom. t 80	General Obs. <i>0</i> 2030 - 2800
Min. 59	Vis. km. 13	p 28.97	
Dry 63	Clouds <1	p(red.) 28.83	
Wet 61 G.S.	C.floc. C.pol. C.dens.		
R.H. 92		Morn. Fair → Clear	Foren. Clear → Fair
Precip. — mm / — in.		Noon Fair	Aftern. Fair <i>C.pol, C.dens</i>
Snowfall/-Depth — in / — in.		Eve. Fair <i>C.c, C.pol</i>	Night Fair → Clear

A.B.



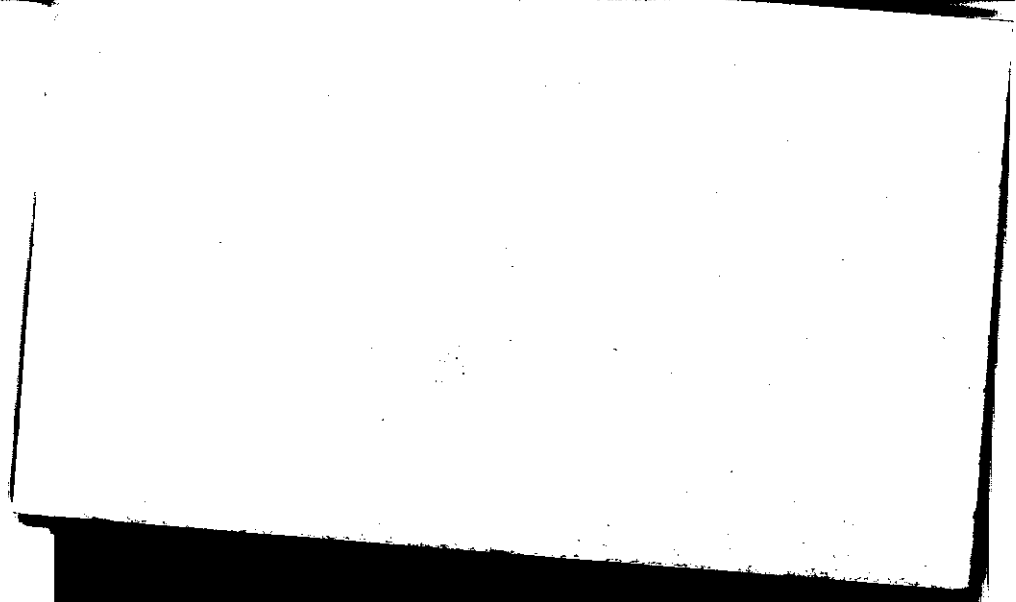
STATE COLLEGE, Pa. Date

AUG 12 1943

Time 0700

Max. 89	Wind F W1	Barom. t 23	General Obs. 0' = in valley 2310-2335 ° 0845 ° cs neb co fume cc
Min. 61	Vis. km. 16	P 29.00	
Dry 64	Clouds 1	P (red.) 28.86	
Wet 61.5	Ground C'pol cs dens		
R.H. 87		Morn. Clear → Fair	Foren. Fair cs dens
Precip. mm/ in.		Noon cc umb, cc, cs dens Fair C'fil.	Aftern. C'pol, C'ice, cc Fair cs dens
Snowfall/Depth in/ in.		Eve. Fair → Pth cly	Night Pth cly → cly-ovc

H.B.



Sp. 227 1900

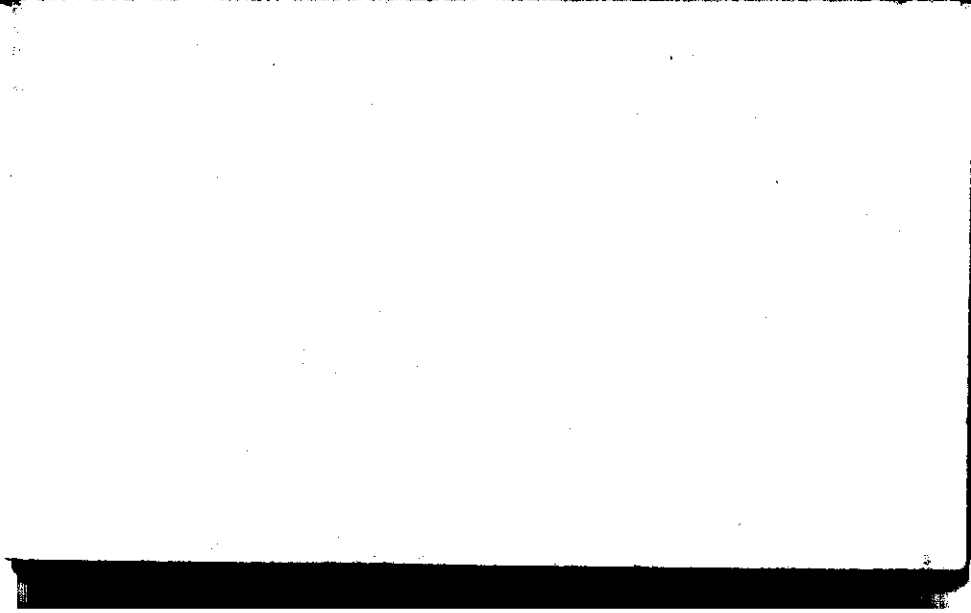
STATE COLLEGE, Pa. Date

AUG 13 1943

Time
0700

Max. 93	Wind F WSW 3	Barom. t 87	General Obs. a° 0900 \bar{a} as rel. intermittent
Min. 67	Vis. km. 17	p 28.85	-1030
Dry 71	Clouds 4	p (red.) 28.70	1550-1735 \bar{a} T ₂
Wet 67	A _c , A _{cc}		2225-2350 \bar{a} T ₂
R.H. 82		Morn. pty. cl.	Foren.
Precip. .7 mm / .03 in.		Noon	Aftern.
Snowfall/-Depth — in / — in		Eve.	Night

A.S.

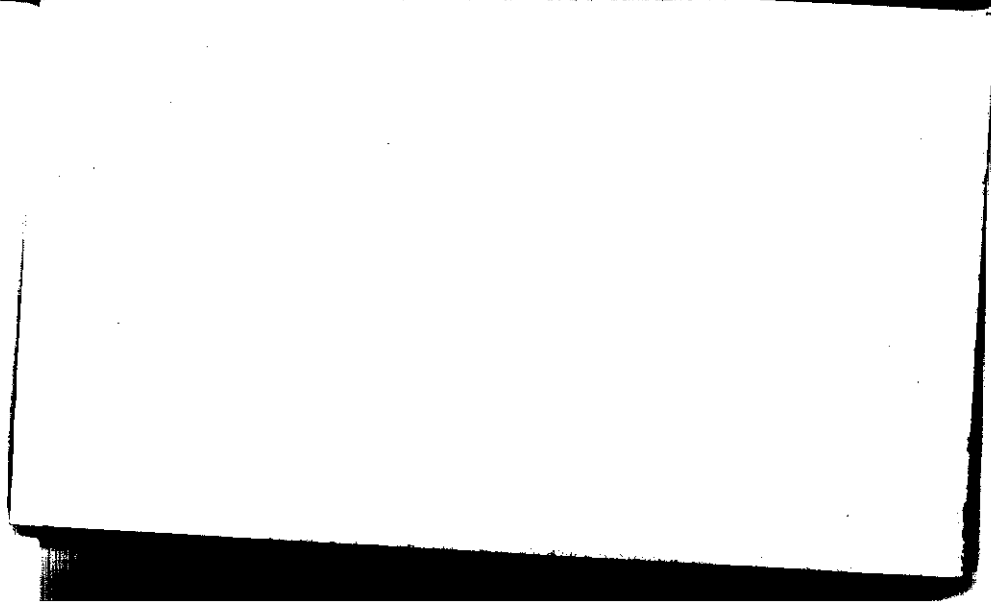


SP. R. 1300 *AV*
 STATE COLLEGE, Pa. Date

AUG 14 1943

Time
 0700

Max. 89	Wind F WSW 3	Barom. t 85	General Obs. ∞	<i>in front</i> <i>in rear</i>
Min. 68	Vis. km. 8	p 28.66		
Dry 74	Clouds 1	p (red.) 28.51		
Wet 71.5	Fs Fc.			
R.H. 84		Morn. fair	Foren. <i>ply dry</i>	
Precip. 17.0 mm / 0.55 in.		Noon <i>ply dry</i>	Aftern. <i>ply dry to fair</i>	
Snowfall/-Depth — in / — in.		Eve. <i>clear</i>	Night <i>clear</i>	

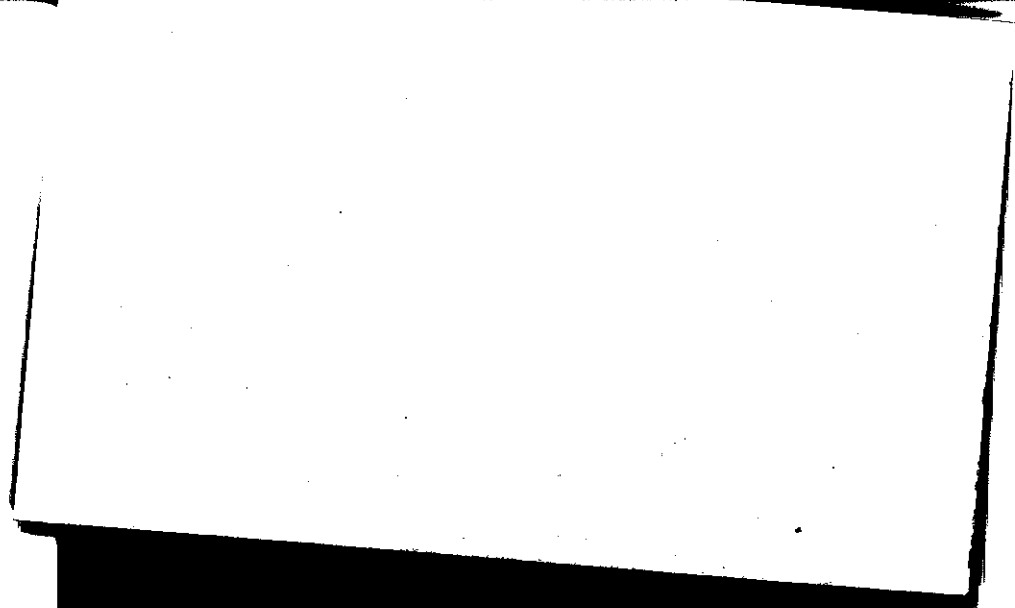


STATE COLLEGE, Pa. Date

AUG 15 1940

Time
0700

Max. 87	Wind F W 3	Barom. t 22	General Obs. 1450 ⁰⁰ - 1505 ci pra ci fl ci per ca ci den
Min. 60	Vis. km. 50	P 28.76	
Dry 66	Clouds 1	p (red.) 28.62	
Wet 61	Fe		
R.H. 80		Morn. fair	Foren. Fair
Precip. — mm/ — in.		Noon Fair	Aftern. Fair → clear
Snowfall/-Depth — in/ — in.		Eve. clear → Fair	Night Fair → partly cloudy
HV			

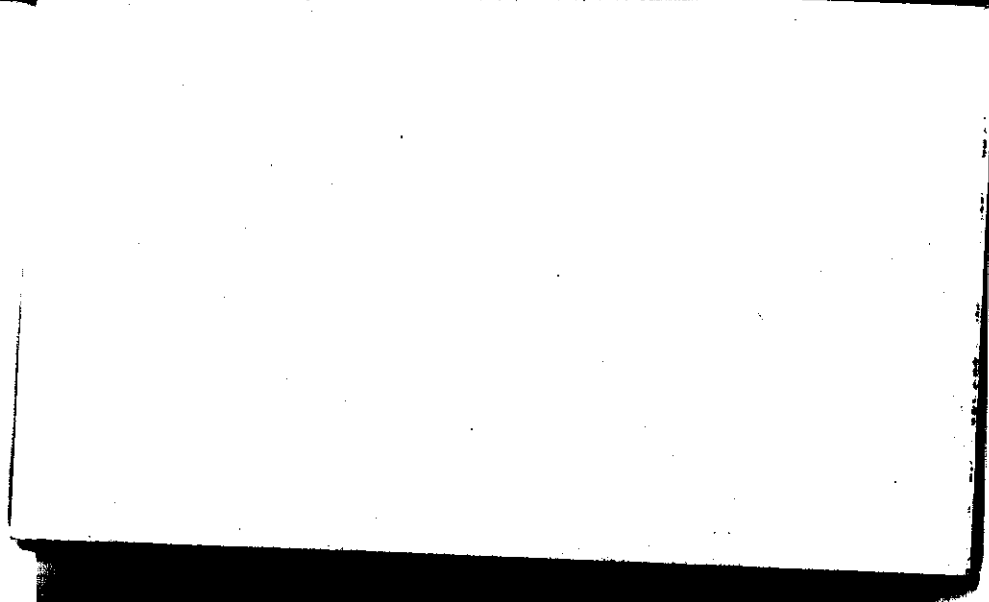


STATE COLLEGE, Pa. Date

AUG 16 1943

Time
0700

Max. 79	Wind F WSW 2	Barom. t 81	General Obs. ☉ 0800 - ☉ - 0815 0841 - ☉ - 2305 - ☉ - 2310 V
Min. 53	Vis. km. 8	p 28.64	
Dry 61	Clouds 7	p (red.) 28.50	
Wet 58	cs, cum, cisth Ac, As		
R.H. 84		Morn. Pky. cel. → cldy. ☉.	Foren. ovc. → cel
Precip. — mm/ — in.		Noon cel	Aftern. cel
Snowfall/-Depth — in/ — in.		Eve. cel	Night cel → ovc → cel → Pky. cel → Fair
H.S.			

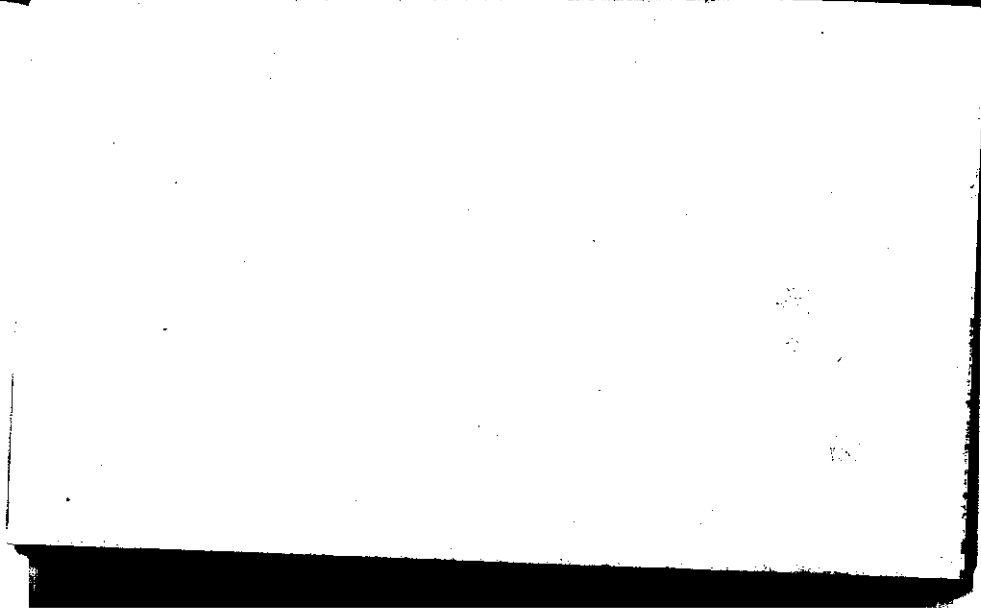


STATE COLLEGE, Pa. Date

AUG 17 1943

Time
0700

Max. 77	Wind F SW 1	Barom. t 77	General Obs. <i>o</i>	
Min. 57	Vis. km. 18	p 28.62		
Dry 61	Clouds < 1	p (red.) 28.79		
Wet 58	Fc, Cu N. cent			
R.H.		Morn. Clear → Fairly	Foren. P/Hy cdy → cdy	
Precip. T mm / T in.		Noon cdy.	Aftern. cdy → ovc.	
Snowfall / -Depth in / in.		Eve. ovc. → cdy	Night cdy → P/Hy cdy	
A.B.				

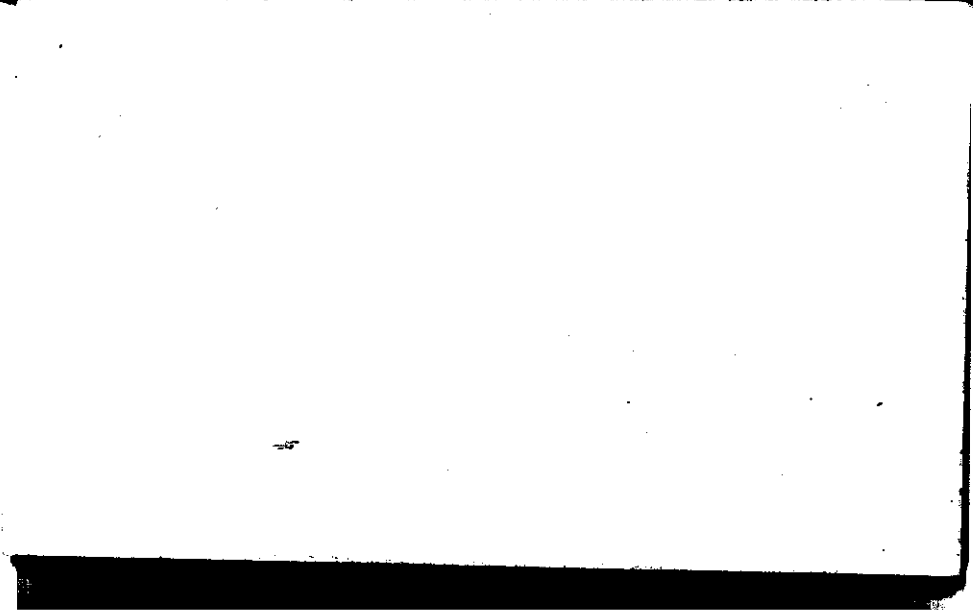


STATE COLLEGE, Pa. Date

AUG 18 1943

Time
0700

Max. 67	Wind F W 1	Barom. t 75	General Obs.
Min. 56	Vis. km. 25	p 28.88	
Dry 59	Clouds 7	p (red.) 28.76	
Wet 54	Cu, Fe Sc		
R.H. 70		Morn. Pth. cld. → cld	Foren. cld.
Precip. — mm / — in.		Noon cld	Aftern cld → Pth. cld
Snowfall / -Depth — in / — in.		Eve. Pth. cld → Fair	Night Fair → Clear
A.B.			



STATE COLLEGE, Pa. Date

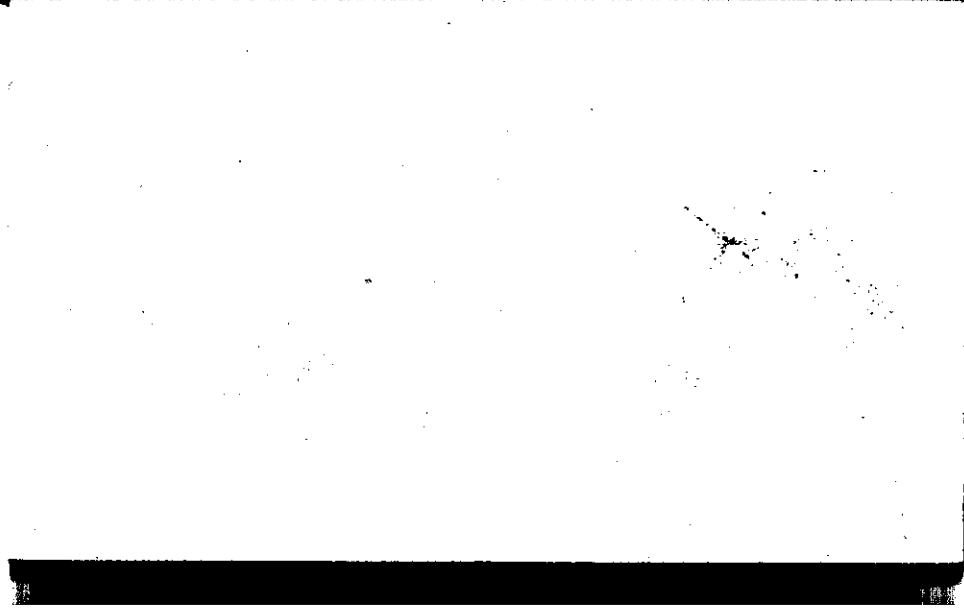
AUG 19 1943

Time

0700

Max. 73	Wind F calm	Barom. t 73	General Obs. W = +F in valley W 0300 - CLT, AM	
Min. 49	Vis. km. 30	p 29.01		
Dry 53	Clouds X	p(red.) 28.89		
Wet ras 50				
R.H. 82		Morn. Clear → Fair	Foren. Fair → Pthy. cldy.	
Precip. mm/ in.		Noon Pthy. cldy.	Aftern. Pthy. cldy → cldy	
Snowfall/Depth in/ in.		Eve. cld → Pthy. cldy	Night Pthy. cldy → Fair	

A.B.



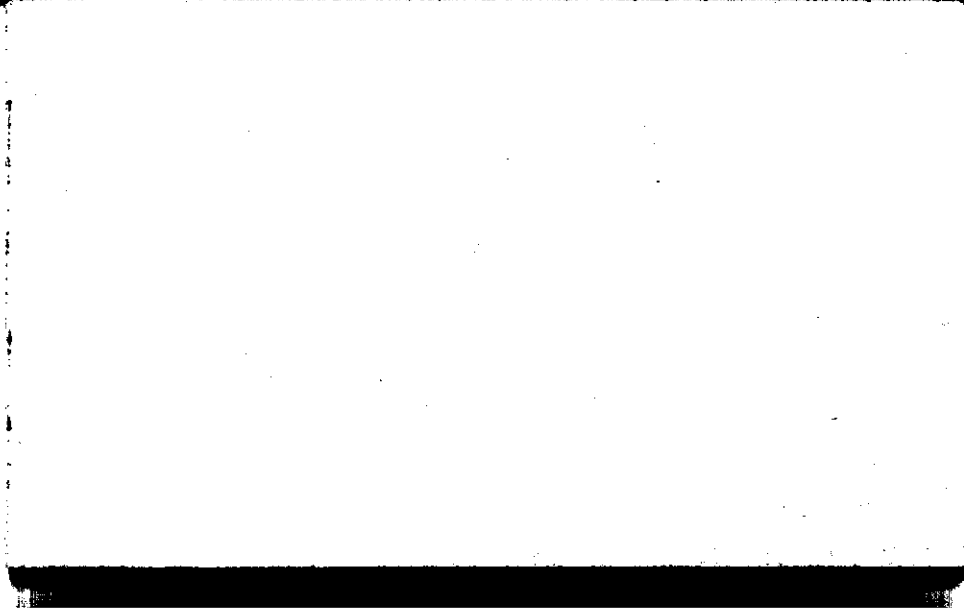
STATE COLLEGE, Pa. Date

AUG 20 1943

Time
0700

Max. 74	Wind F Calm	Barom. t 76	General Obs. $\alpha^2 =$ 1020 \circ <i>ci fil, ci den, ci pd.</i> <i>intermittent - 1845</i>	
Min. 49	Vis. km. 8	p 29.01		
Dry as 52	Clouds Cflouc	p(red.) 28.89		
Wet 51	ci fil <1			
R.H. 91		Morn. <i>ci fil, ci den, ci pd</i> Clear \rightarrow Fair	Foren. fair	
Precip. mm/— in.		Noon fair	Aftern. <i>ply dry</i>	
Snowfall/-Depth in/— in.		Eve. <i>dry</i>	Night <i>ply dry</i>	

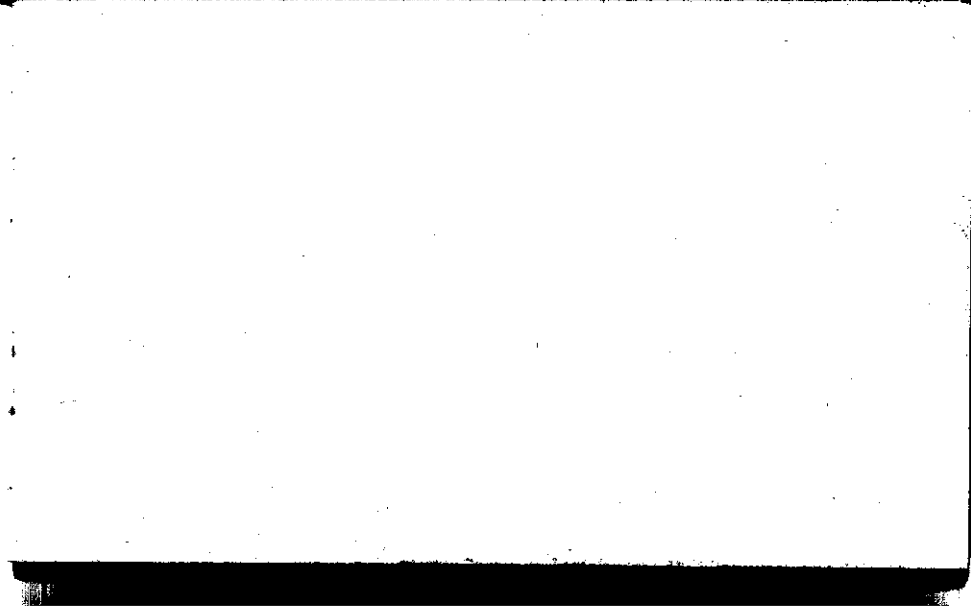
A.B.



STATE COLLEGE, Pa. Date **AUG 21 1943**

Time
0700

Max. 79	Wind F calm	Barom. t 77	General Obs. 00 0	a' fe a' mme ca' a' ma i' d m.
Min. 52	Vis. km. 10	p 28.95	1217 - 0° - 1222#	
Dry 58	Clouds 5	p(red.) 28.82	1535 - 1545 0°	
Wet 55	Ac Ce Ci fe. a' ma Acc			
R.H. 83 93		Morn. partly cldy	Foren. cldy	
Precip. — mm/ — in.		Noon cldy → ovc.	Aftern. cldy	
Snowfall/Depth in/ in.		Eve. pty cldy	Night clearing	

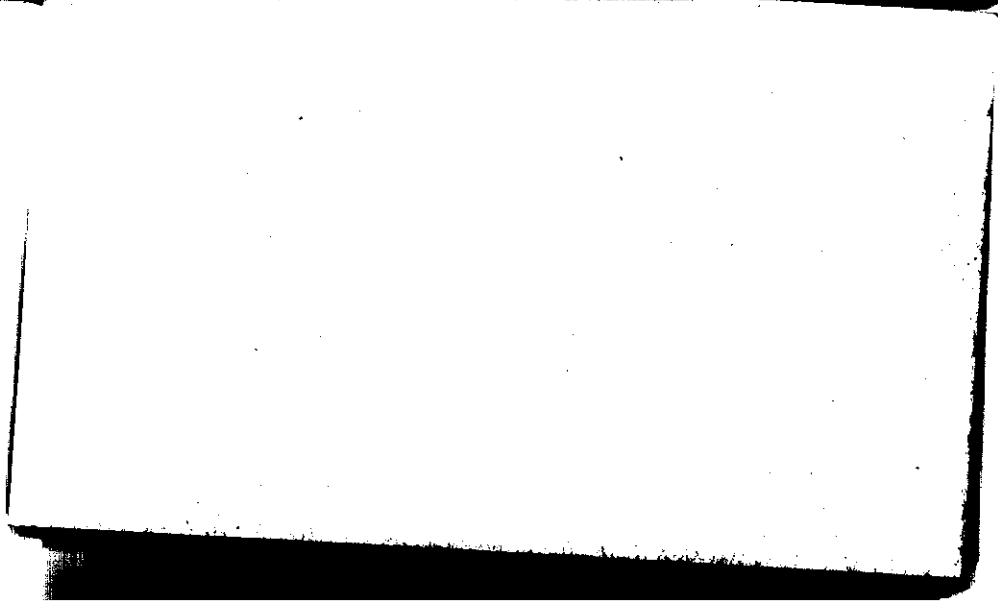


STATE COLLEGE, Pa. Date

AUG 22 1943

Time
0700

Max. 78	Wind F Calm	Barom. t 78	General Obs. = α^2
Min. 57	Vis. km. 4	P 28.94	
Dry 60	Clouds —	p(red.) 28.81	
Wet 58 1/2			
R.H. % 92		Morn. clear foggy	Foren. pky ddy
Precip. T mm/ T in.		Noon pky ddy -	Aftern. ddy
Snowfall/-Depth — in/ — in.		Eve. ddy → pky ddy	Night Fair → Clear

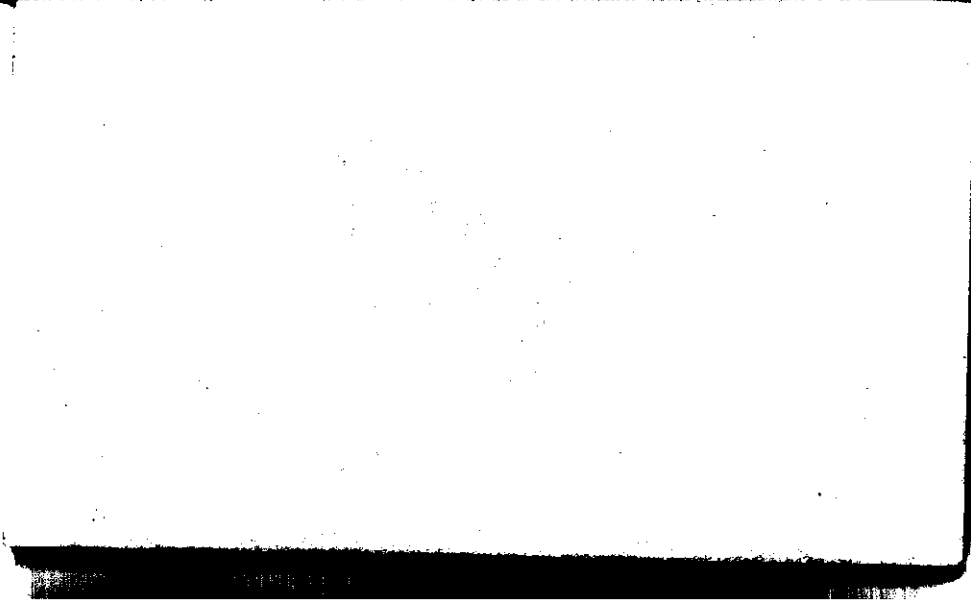


STATE COLLEGE, Pa. Date

AUG 23 1943

Time
0700

Max. 85	Wind F SE 1	Barom. t 80	General Obs. 22 00 0 1155 - J
Min. 60	Vis. km. 9	p 28.97	1750 0 1 ci fl ci flom
Dry 61	Clouds	p (red.) 28.84	1800 6 0 0 - 1835 up d.
Wet 59	X		
R.H. —		Morn. Clear	Foren. Clear → Fair
Precip. — mm/ — in.		noon ^{and.} Fair	Aftern. ^{Spol, a net.} Fair ci fl
Snowfall/-Depth — in/ — in.		Eve. Fair → pty clly	Night pty clly → cldy



STATE COLLEGE, Pa. Date

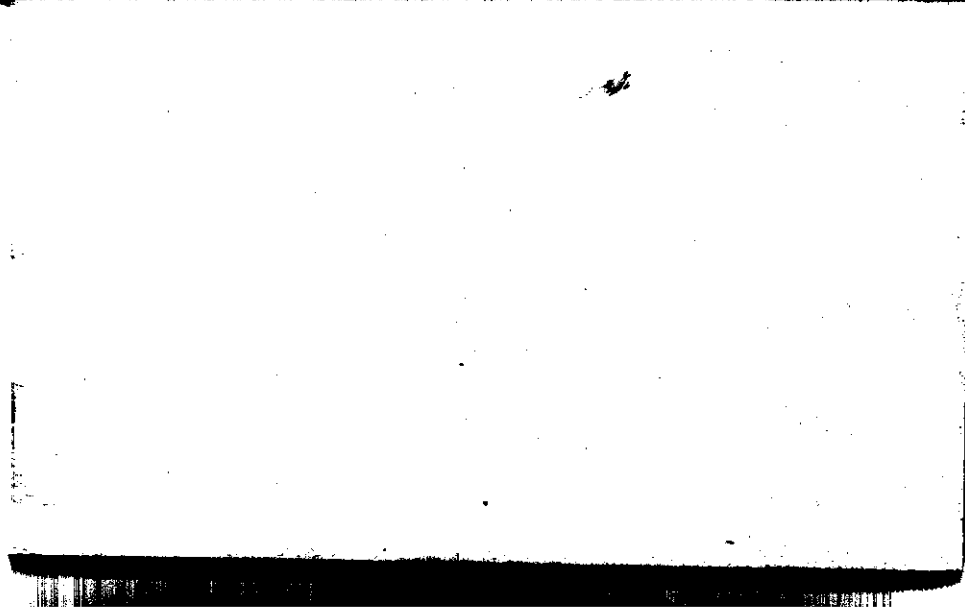
AUG 24 1943

Time
0700

Max. 89	Wind F W2	Barom. t 81	General Obs. ∞
Min. 61	Vis. km. 4	28.88	0400 - 0600 1-1° 0642 - 0653 0° 0654 - 1100 1-1°
Dry 70	Clouds 9	p (red.) 28.74	
Wet 65	Ac, As, Nc Fc		
R.H. 75		Morn. <i>celly</i>	Foren. <i>celly</i>
Precip. T mm / T in.		Noon <i>celly → 1/4 celly</i>	Aftern. <i>ptly. celly</i>
Snowfall / -Depth in / in.		Eve. <i>ptly celly → Fair</i>	Night <i>Fair → Clear</i>



Max. 84	Wind F Calm	Barom. t 80	General Obs. α' \equiv
Min. 61	Vis. km. <2	p 28.85	
Dry 62	Clouds X	p (red.) 28.72	
Wet 62			
R.H. 97		Morn. Clear	Foren. clear \rightarrow Fair
Precip. 6.2 mm / .25 in		Noon Clear Fair	Aftern. ^{clouds, Cirra, Ciril} Fair ^{sp. clouds}
Snowfall / -Depth — in / — in		Eve. Fair \rightarrow P.Hy. Cls.	Night P.Hy. Cls. \rightarrow All
A.B.			

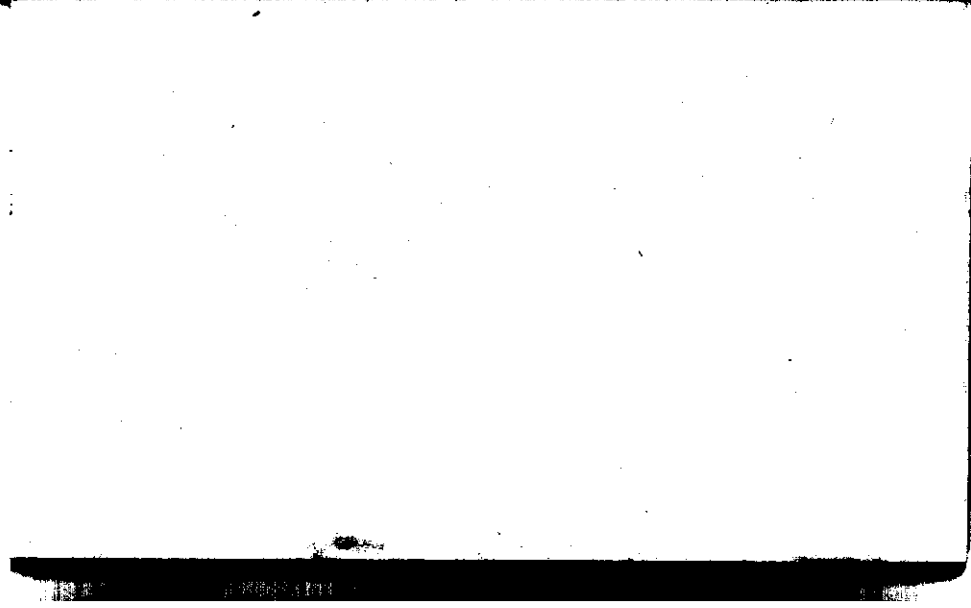


STATE COLLEGE, Pa. Date

AUG 26 1943

Time
0700

Max. 90	Wind F Calm	Barom. t 80	General Obs. a°	
Min. 62	Vis. km. 15	p 28.88		
Dry 67	Clouds 9	p(red.) 28.73		
Wet 64	F, S, A C.			
R.H. 85		Morn. cldy.	Foren. cldy	
Precip. — mm/ — in.		Noon cldy.	Aftern. cldy	
Snowfall/-Depth — in/ — in.		Eve. cldy.	Night cldy → over.	



STATE COLLEGE, Pa. Date

AUG 27 1943

Time

0700

Max. 80	Wind F NW 2	Barom. t 81	General Obs. 0155 10/1 - 0700 T&1145
Min. 58	Vis. km. 5	p 28.85	0900 - 1100 10/1 1100 10/1 ² - 1300
Dry 59	Clouds 10	p(red.) 28.71	1300 - 1400 10/1
Wet 58	Ns, Fs		
R.H. 97	CB	Morn. Ovc.	Foren. ovc
Precip. 10.4 mm / 41 in.		NOON ovc. Rain shower	Aftern. ovc with breaks
Snowfall / -Depth — in / — in.		Eve. ovc	Night cdy
A.B.		SP 1300 & 1700	SP CLT

		+38		
[Zikarrei] (16)	-16	+54	70	+2.4 4.4
6	5			
1	2			(2)
3				
5				
8				+7
2				
3				+7
6				
0				7
6				
3				+35
7				
3				3.5
7				
5				
5				

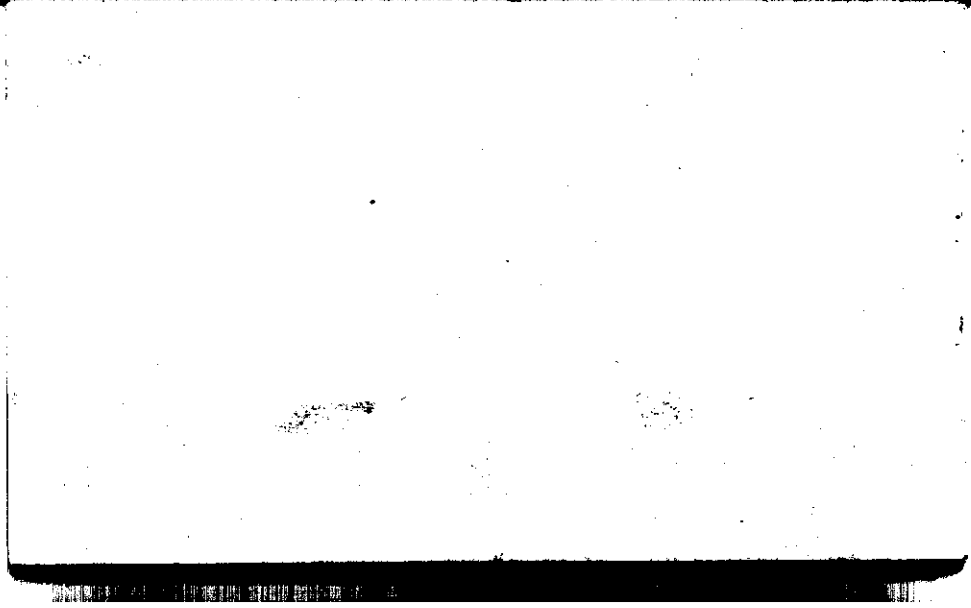
STATE COLLEGE, Pa. Date

AUG 28 1943

Time

0700

Max. 68	Wind F N 3	Barom. t 73	General Obs. Hygograph adjusted Pen. set from 72 to 70%	
Min. 56	Vis. km. 50	p 28.90		
Dry 57	Clouds 1	p (red.) 28.78		
Wet 52	st cu Fe			
R.H. 72		Morn. fair	Foren. ptly cl	
Precip. 10.4 mm / 0.41 in.		Noon cl	Aftern. cl	
Snowfall / -Depth — in / — in.		Eve. ptly cl	Night clearing	



STATE COLLEGE, Pa. Date **AUG 29 1943**

Time
0700

Max. 70	Wind F calm	Barom. t 74	General Obs. ☼ ☼ ☼	ci fl ci den
Min. 48	Vis. km. 0.5	p 28.92		
Dry 49	Clouds	p(red.) 28.80		
Wet ^{49.5} 49.0				
R.H. 96		Morn. 709	Foren. p ^{ty} cldy	
Precip. — mm/ — in.		Noon cldy or cu cny	Aftern. cldy - pt cldy	
Snowfall/-Depth — in/ — in.		Eve. pty cldy + Fair	Night pty cldy + Fair → clear	

C. L. T.



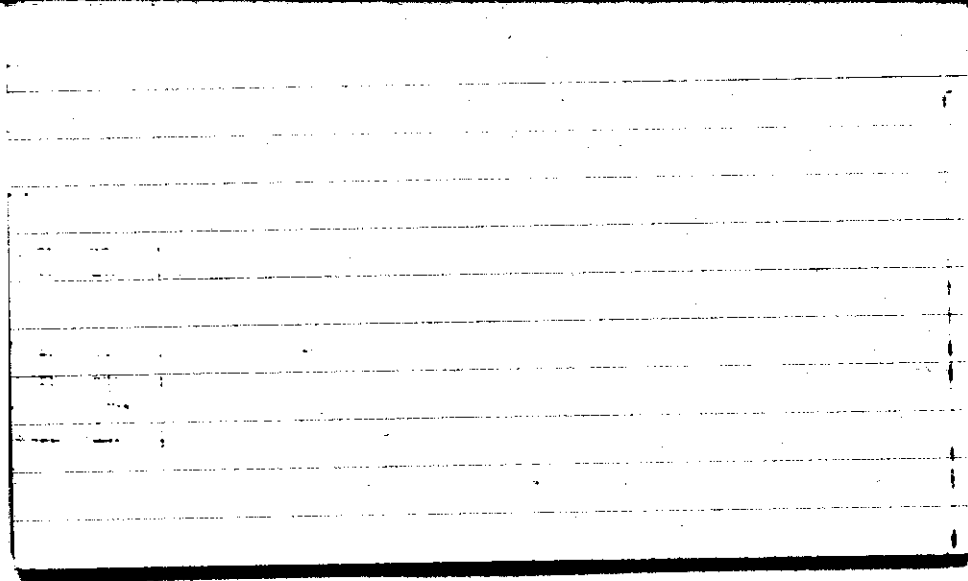
STATE COLLEGE, Pa. Date

AUG 30 1943

Time
0700

Max. 70	Wind P SE 1	Barom. t 72	General Obs. α \equiv	
Min. 49	Vis. km. <0.1	p 28.94		
Dry 52	Clouds \equiv	p (red.) 28.85		
Wet 52				
R.H. 100		Morn. Foggy	Foren. Clear \rightarrow Fair	
Precip. — mm / — in.		Noon Fair	Aftern. Fair	
Snowfall / -Depth — in / — in.		Eve. Fair	Night Fair \rightarrow Clear	

A.B.



STATE COLLEGE, Pa. Date

AUG 31 1943

Time

0700

Max. 81	Wind F WNW 2	Barom. t 76	General Obs. 0° = valley
Min. 52	Vis. km. 6	p 29.00	17° 0' at 10:00 -1815 at 1:00
Dry 59	Clouds X	p (red.) 28.88	
Wet 57			
R.H. 86		Morn. Clear	Foren. Clear
Precip. — mm / — in.		Noon clear → Fair	Aftern. fair to ptly cly
Snowfall / -Depth — in / — in.		Eve. ptly dry ac	Night cly → Ovc.
P.D.			

