

STATE COLLEGE, Pa. Date FEB - 1 1943

Time 0700

Max. 43	Wind F WNW 7	Barom. t 68	General Obs. 0000 - 0415
Min. 28	Vis. km. 20	p 28.76	1st 0840 - 1600
Dry. 33	Clouds 10	p (red.) 28.66	1st 1755 - 1940
Wet 32.0 28.6	Sc		1st 2220 - 2300
R.H. 64		Morn. ovc.	Foren. Ptlly cldy - cldy Snow Flurries
Precip. 0.7 mm / 0.03 in		Noon Ptlly cldy Snow Flurries	Aftern. Ptlly cldy Snow Flurries
Snowfall / -Depth — in / 4.6 in		Eve. Ptlly cldy Snow Flurries	Night Ptlly cldy Snow Flurries
A.M. 0745			

Oaxaca		(23)	-54	+70	124	+0.7	5.4
9	8	6					
5	-3						
3	7						/
6							+6
1							+6
1							6
4							+6.0
5							6.0
6							
2							
-2							
1							
-2							
-8							
1							
-8							
5							

STATE COLLEGE, Pa. Date FEB - 2 1943


Time
0700

Max. 33	Wind F W 5	Barom. t 65	General Obs. 00
Min. 21	Vis. km. 15	28.97	00057*1°0020 1280830-1230
Dry 24	Clouds 9	p (red) 28.88	
Wet 23.2 21.5	FS, AS		
R.H. 77		Morn. cldy <i>mm</i>	Foren. cldy Snow - Light
Precip. T mm / T in.		Noon cldy → pty cldy	aftern. cldy
Snowfall / -Depth T in / 2.7 in.		Eve. pty cldy	Night Fair
AM. 0730			

Oxford (34)		+32		-37 +69 106		+0.9 3.1	
0	0						
3	-2						
-1	9	1					-6
3	-6	-1					+8
3	4	-2					+2
-4	1	1					
4	2	4					
-9	-1	2					
-7	4	-1					14
0	-2						
3	3						+0.2
8	-2						
0	-1						1.6
1	1						
2							
6							
0							
8							
4							
-2							

STATE COLLEGE, Pa. Date FEB -3 1943

Time 0700

Max. 29	Wind F ESE 1	Barom. t 67	General Obs. 
Min. 9	Vis. Vm. 9	29.15	1530 - 1600 *°
Dry 10	Clouds 3	29.05	1620 - 1900 / A / ° - 1
Wet	Ce, Cs		2210 - 2330 °
R.H.		Morn. Fair fm	Poren. Ptly cldy
Precip. T in / T in.		Noon cldy fm	Aftern. Ovcst.
Snowfall, -Depth T in / 3.2 in.		Eve. Ovcst.	Night Ovcst.
A.M. 0230			

The following reference is missing in the
College/M.I. Library:

Author:

Title:

Year:

Price:

Purchase is desirable: immediately eventually

Please fill out and give either to Miss

Lucille Jackson or H. Landberg. Your

cooperation is appreciated.

STATE COLLEGE, Pa. Date

FEB - 4 1943

Time
0700

Max. 35	Wind F SW 3	Barom. t 68	General Obs.	1440
Min. 8	Vis. km.	28.70	0420-0500 0550-0630	1500
Dry 35 (65.3)	Clouds 10	p (red.) 28.60	2330-2345	1507 1520
Wet	Hc, Fan			
R.H.	As.	Morn. orcast.	Foren. orcast.	
Precip. .03 mm / .01 in		Noon orcast.	Aftern. Rldy	
Snowfall / - Depth T in / 2.0 in		Evs. dry - pty cly	Night pty cly → Fair	
H.B.				

321012-002163173

Muskrat (16) -10 + 32 - 22
+ 14 - 26

STATE COLLEGE, Pa. Date

FEB - 5 1943

Time

0700

Max. 48	Wind F WNW 3	Barom. t 69	General Obs. ~	Ce, Cs, Cunc, Ci fil.
Min. 35	Vis. km. 2.5	28.75	1210 '0' 1330 '0' - 11 1400 '0' - 1415	
Dry 35	Clouds 1	(red.) 28.64		
Wet 32	A.			
R.H. 73		Morn. Fair	Foren. Fair - pty cldy	
Precip. T mm / 1 in.		Noon pty cldy	Aftern. pty cldy → cldy	
Snowfall / -Depth — in / 1.0 in.		Eve. cldy	Night cldy → Ouc.	

A.B.

Table with multiple columns and rows. The bottom row contains the text: Mount Wilson (18) - 22 + 11 - 33 - 0.6 1.8

- 5
- 1
- 2
- 6
- 0
- 5
- 2
- 0
- 1
- 2
- 1
- 2
- 0
- 1
- 2
- 2

STATE COLLEGE, Pa. Date

FEB - 6 1943

Time
0700

Max.	Wind F	Barom.	General Obs.
46	ESE 3	73	0300 ° 0315 ← 1845
Min. 33	Vis. km. 10	28.57	0315 ° 0335
Dry 36	Clouds 10	38.46	0335 ° 0915
Wet 35.9	St. As		1410 Δ^2 1455 } 1425 * 1450 } 1450 * 1650 }
R.H. 89		Foren. Ovc., Rain	Foren. Ovc., Light Rain
Precip. 1.7 mm / 0.07 in.		Noon Ovc.	Aftern. Ovc., Sleet Mixed Rain & Snow
Snowfall / - Depth — in / 0.2 in.		Eve. cldy	Night cldy → Ovc.
A.M.		0730	

	1.5
	1.0
	0.5
	0
	-0.5
	-1.0
	-1.5
	-2.0
	-2.5
	-3.0
	-3.5
	-4.0
	-4.5
	-5.0
	-5.5
	-6.0
	-6.5
	-7.0
	-7.5
	-8.0
	-8.5
	-9.0
	-9.5
	-10.0
	-10.5
	-11.0
	-11.5
	-12.0
	-12.5
	-13.0
	-13.5
	-14.0
	-14.5
	-15.0
	-15.5
	-16.0
	-16.5
	-17.0
	-17.5
	-18.0
	-18.5
	-19.0
	-19.5
	-20.0
	-20.5
	-21.0
	-21.5
	-22.0
	-22.5
	-23.0
	-23.5
	-24.0
	-24.5
	-25.0
	-25.5
	-26.0
	-26.5
	-27.0
	-27.5
	-28.0
	-28.5
	-29.0
	-29.5
	-30.0
	-30.5
	-31.0
	-31.5
	-32.0
	-32.5
	-33.0
	-33.5
	-34.0
	-34.5
	-35.0
	-35.5
	-36.0
	-36.5
	-37.0
	-37.5
	-38.0
	-38.5
	-39.0
	-39.5
	-40.0
	-40.5
	-41.0
	-41.5
	-42.0
	-42.5
	-43.0
	-43.5
	-44.0
	-44.5
	-45.0
	-45.5
	-46.0
	-46.5
	-47.0
	-47.5
	-48.0
	-48.5
	-49.0
	-49.5
	-50.0
	-50.5
	-51.0
	-51.5
	-52.0
	-52.5
	-53.0
	-53.5
	-54.0
	-54.5
	-55.0
	-55.5
	-56.0
	-56.5
	-57.0
	-57.5
	-58.0
	-58.5
	-59.0
	-59.5
	-60.0
	-60.5
	-61.0
	-61.5
	-62.0
	-62.5
	-63.0
	-63.5
	-64.0
	-64.5
	-65.0
	-65.5
	-66.0
	-66.5
	-67.0
	-67.5
	-68.0
	-68.5
	-69.0
	-69.5
	-70.0
	-70.5
	-71.0
	-71.5
	-72.0
	-72.5
	-73.0
	-73.5
	-74.0
	-74.5
	-75.0
	-75.5
	-76.0
	-76.5
	-77.0
	-77.5
	-78.0
	-78.5
	-79.0
	-79.5
	-80.0
	-80.5
	-81.0
	-81.5
	-82.0
	-82.5
	-83.0
	-83.5
	-84.0
	-84.5
	-85.0
	-85.5
	-86.0
	-86.5
	-87.0
	-87.5
	-88.0
	-88.5
	-89.0
	-89.5
	-90.0
	-90.5
	-91.0
	-91.5
	-92.0
	-92.5
	-93.0
	-93.5
	-94.0
	-94.5
	-95.0
	-95.5
	-96.0
	-96.5
	-97.0
	-97.5
	-98.0
	-98.5
	-99.0
	-99.5
	-100.0

-3
 (28) -22 + 19 41
 1.5
 1.0
 0.5
 0
 -0.5
 -1.0
 -1.5
 -2.0
 -2.5
 -3.0
 -3.5
 -4.0
 -4.5
 -5.0
 -5.5
 -6.0
 -6.5
 -7.0
 -7.5
 -8.0
 -8.5
 -9.0
 -9.5
 -10.0
 -10.5
 -11.0
 -11.5
 -12.0
 -12.5
 -13.0
 -13.5
 -14.0
 -14.5
 -15.0
 -15.5
 -16.0
 -16.5
 -17.0
 -17.5
 -18.0
 -18.5
 -19.0
 -19.5
 -20.0
 -20.5
 -21.0
 -21.5
 -22.0
 -22.5
 -23.0
 -23.5
 -24.0
 -24.5
 -25.0
 -25.5
 -26.0
 -26.5
 -27.0
 -27.5
 -28.0
 -28.5
 -29.0
 -29.5
 -30.0
 -30.5
 -31.0
 -31.5
 -32.0
 -32.5
 -33.0
 -33.5
 -34.0
 -34.5
 -35.0
 -35.5
 -36.0
 -36.5
 -37.0
 -37.5
 -38.0
 -38.5
 -39.0
 -39.5
 -40.0
 -40.5
 -41.0
 -41.5
 -42.0
 -42.5
 -43.0
 -43.5
 -44.0
 -44.5
 -45.0
 -45.5
 -46.0
 -46.5
 -47.0
 -47.5
 -48.0
 -48.5
 -49.0
 -49.5
 -50.0
 -50.5
 -51.0
 -51.5
 -52.0
 -52.5
 -53.0
 -53.5
 -54.0
 -54.5
 -55.0
 -55.5
 -56.0
 -56.5
 -57.0
 -57.5
 -58.0
 -58.5
 -59.0
 -59.5
 -60.0
 -60.5
 -61.0
 -61.5
 -62.0
 -62.5
 -63.0
 -63.5
 -64.0
 -64.5
 -65.0
 -65.5
 -66.0
 -66.5
 -67.0
 -67.5
 -68.0
 -68.5
 -69.0
 -69.5
 -70.0
 -70.5
 -71.0
 -71.5
 -72.0
 -72.5
 -73.0
 -73.5
 -74.0
 -74.5
 -75.0
 -75.5
 -76.0
 -76.5
 -77.0
 -77.5
 -78.0
 -78.5
 -79.0
 -79.5
 -80.0
 -80.5
 -81.0
 -81.5
 -82.0
 -82.5
 -83.0
 -83.5
 -84.0
 -84.5
 -85.0
 -85.5
 -86.0
 -86.5
 -87.0
 -87.5
 -88.0
 -88.5
 -89.0
 -89.5
 -90.0
 -90.5
 -91.0
 -91.5
 -92.0
 -92.5
 -93.0
 -93.5
 -94.0
 -94.5
 -95.0
 -95.5
 -96.0
 -96.5
 -97.0
 -97.5
 -98.0
 -98.5
 -99.0
 -99.5
 -100.0

STATE COLLEGE, Pa. Date FEB -7 1943

Time 0700

Max. 39	Wind F W 6	Barom. t 67	General Obs. 0030 *°0345 0420 *°1145 1145 1X/2+00
Min. 26	Vis. km. 4	28.33	
Dry 26	Clouds 10	28.23	
Wet 25.9 24.2	As, Fs		
R.H. 79		Morn. Ovc., Light Snow	Foren. Ovc., Light Snow
Precip. 4.9 mm / 0.20 in.		Noon cldy Snow Flurries	Aftern. cldy Snow Flurries
Snowfall, Depth 0.1 in / 0.1 in.		Eve. Cldy Snow Flurries	Night cldy Snow Flurries
A.M. 0725			

The following reference is missing in the
College/M.I. Library:

Author:

Title:

Year:

Price:
Purchase is desirable: immediately eventually

Please fill out and give either to Miss
Lucille Jackson or H. Landberg. Your

cooperation is appreciated.

STATE COLLEGE, Pa. Date

FEB -8 1943

Time
0700

Max. 29	Wind F W7	Barom. t 63	General Obs. 0000 1x/ 1100
Min. 25	Vis. km. 20	28.67	
Dry 26	Clouds 10	28.58	
Wet	Sc, As		
R.H.			
Precip.		Foren. overcast 1x°	Foren. overcast → cloudy
T _{max} / T _{min}		Noon cloudy → partly cloudy	Afternoon partly cloudy → clear
Snowfall / Depth		Eve. clear	Night clear → fair
T in / .1 in			
A.R. 0750			

		1-
		1-
		1-
		4-
		4-
		9-
		3-
		3-
		0-
		5-
A 2	B 2 -	9.5. 21. 4. 2 - 1. 5/10
		21 -

STATE COLLEGE, Pa. Date

FEB -9 1943

Time

0700

Max. 4	Wind F WSWA	Barom. t 66	General Obs. ∞ L° 0820 -1000	
Min. 19	Vis. km. 20	p 28.86		
Dry 19	Clouds 2	(red.) 28.76		
Wet	ceil, app sc, cuml.			
R.H.	refloc.	MORN.	Fair	Foren. Fair to ptly clgy
Precip.	T in / T in.	NOON	ok clgy	Aftern. fair
Snowfall, -Depth	T in / T in.	EVE.	ok clgy	Night Clgy
A.B.				

0
 -1
 5
 1
 1
 0
 0
 5
 1
 6
 0
 3
 3
 -4

1.2
 2.1
 5
 9
 26
 35
 41

STATE COLLEGE, Pa. Date

FEB 10 1943

Time

0700

Max. 38	Wind F 53	Barom. t 70	General Obs.	1310 -1325
Min. 17	Vis. km. 25	28.85	0920-1110 2150-2210	1520 1509 -1530
Dry 34	Clouds 9	(red.) 28.74	2330-2400	
Wet 28.5	Ac			
R.H. 45		Morn. Cldy	Foren. Ovc. Rain	
Precip. - mm / - in.		Noon a' part, a' sun, a' cld, a' sun, a' cld	Aftern. Cldy	
Snowfall / -Depth - in / T in.		Eve. Ovc.	Night Ovc. Light Rain	
A.B.				

STATE COLLEGE, Pa. Date FEB 11 1943

Time
0700

Max. 41	Wind F WSW 5	Barom. t 70	General Obs.
Min. 33	Vis. km. 12	28.42	° 0000-0045 0720 ¹ / ₂ 0735
Dry 39	Clouds 10	(red.) 28.31	° 0045-0120 0735 ¹ / ₂ 0740
Wet 35.8 34.9	As		° 0120-0325 0740 ¹ / ₂ 1220
R.H. 91			° 0325-0410 1315 ¹ / ₂ 2045
			° 0435-0510 2045 ¹ / ₂ 2055
			° 0510-0720 2055 ¹ / ₂ 2400
Precip. 4.0 am / 0.16 an		MORN. Ovc. Rain	Foren. Ovc. SNOW
Snowfall/Depth — in / T in		NOON Ovc. SNOW	Aftern. SNOW Cldy Light SNOW
		Eve. Pty Cldy → Cldy	Night Pty Cldy → Cldy Light SNOW
A.M. 0730		Light SNOW	Light SNOW

8.8	2	2	11	-5 + 6	11	
						11
						11
						11
						11
						11
						11
						11
						11
						11
						11
						11
						11
						11
						11
						11
						11
						11
						11
						11
						11
						11


Handwritten notes and numbers:

11 - $5 + 6$ = 11 11 $-5 + 6$ 11
 11 11 11 11

STATE COLLEGE, Pa. Date

FEB 12 1943

Time
0700

Max. 38	Wind F. W 4	Barom. t 65	General Obs. ∞
Min. 10	Vis. km. 25	28.94	0000 *° 0110 2245 *° 2400
Dry 10	Clouds 1	28.84	
Wet 7.3 8.8	Ac		
R.H. 88		Morn. Fair / Cs	Foren. Pt. cld
Precip. 3.0 mm / 0.12 in.		Noon Pt. cld - cld	Aftern. ptly cldy
Snowfall / -Depth T in / T in.		Eve. ptly cldy	Night cldy → Ovc.
A.M.			

[Faint, mostly illegible text on lined paper, possibly bleed-through from the reverse side.]

$\frac{1}{3}$
 $\frac{2}{3}$

87 80 - 7 - 2 + 5 = 11
 - 3

STATE COLLEGE, Pa. Date FEB 13 1943

Time
0700

Max. 28	Wind F ENE 2	Barom. t 66	General Obs. =	
Min. 9	Vis. km. 15	28.70	0000 *° 0110	1005 *° 1815
Dry 22	Clouds 10	28.60	0145 *° 0330	2240 *° 2345
Wet 22.4 21.4	As, Fs		0350 *° 0400	☼ 2000-2015
R.H. 86		Foren. Ovc.	Foren. Ovc.	
Precip. 1.4 mm / 0.06 in.		Light Snow	Light Snow	
Snowfall / -Depth 9 in / 1.8 in.		Noon Ovc.	Aftern. Ovc.	
		Light Snow	Light Snow Flurries	
		Eve. Ovc.	Night Ovc.	
		Light Snow	Light Snow	
A.M. 0730				

Handwritten notes on lined paper, including a list of numbers and a mathematical expression.

- 4
- 3
- 5
- 3
- 5

of $(s) - 15 + 5 \cdot 20 = 0$ 40

-10

STATE COLLEGE, Pa. Date

FEB 14 1943

Time

Max. 31	Wind F W 6	Barom. t 62	General Obs. 7- III
Min. 8	Vis. km. 25	28.55	01451K P 0505
Dry 8	Clouds 10	28.46	0600 1*1° 0830
Wet 5.9 5.0	As, Fs		1545 7° 1600
R.H. 77		Morn. Ovc.	Foren. cldy snow Blowing snow
Precip. 1.6 mm / 0.06 in.		Noon Ptlly cldy Blowing snow	Aftern. Ptlly cldy → cldy (8.5)
Snowfall / -Depth 0.4 in / 1.4 in		Eve. Ptlly cldy → (P. snow) Fair	Night Fair Blowing snow
AM 0730			

Handwritten notes on lined paper, including the following text:

1
2
3
4
5
6
7
8
9
10
11
12
13
14
15
16
17
18
19
20
21
22
23
24
25
26
27
28
29
30
31
32
33
34
35
36
37
38
39
40
41
42
43
44
45
46
47
48
49
50
51
52
53
54
55
56
57
58
59
60
61
62
63
64
65
66
67
68
69
70
71
72
73
74
75
76
77
78
79
80
81
82
83
84
85
86
87
88
89
90
91
92
93
94
95
96
97
98
99
100

1
2
3
4
5
6
7
8
9
10
11
12
13
14
15
16
17
18
19
20
21
22
23
24
25
26
27
28
29
30
31
32
33
34
35
36
37
38
39
40
41
42
43
44
45
46
47
48
49
50
51
52
53
54
55
56
57
58
59
60
61
62
63
64
65
66
67
68
69
70
71
72
73
74
75
76
77
78
79
80
81
82
83
84
85
86
87
88
89
90
91
92
93
94
95
96
97
98
99
100

STATE COLLEGE, Pa. Date

FEB 15 1943


Time
0700

Max. 12	Wind F WNW4	Barom. t 55	General Obs. ∞	
Min. -6	Vis. km. 20	P. 28.91	<div style="border: 1px solid black; padding: 5px; width: fit-content;"> 1175 - 1530 C. 2.6 </div>	
Dry -5	Clouds 1	p (red.) 28.84		
Wet	Fc			
R.H. 63		Morn. Fair	Foren. Pfly cldy	
Precip. T mm / T in.		Noon Pfly cldy → cly	Aftern. Pfly cldy	
Snowfall - Depth T in / 1.0 in.		Eve. Pfly cly → Fair	Night Fair	
A.M. 0700				

STATE COLLEGE, Pa. Date

FEB 16 1943

Time
0700

Max. 6	Wind F WSW 2	Barom. t 57	General Obs. =	 1915- 2400 cs neb
Min. -7	Vis. km. 10	p 29.11	=	
Dry -2	Clouds 1	(red.) 29.03		
Wet	Ac			
R.H. 74		Morn. Fair	Foren. pty cldy icy	
Precip. — mm / — in.		Noon cldy	Aftern. pty cldy → cldy	
Snowfall / -Depth — in / 2.9 in.		Eve. pty cldy	Night pty cldy	
A.M. 0700				

Handwritten notes on lined paper, including the phrase "Don't (1) - 0 + 4" and other illegible markings.

STATE COLLEGE, Pa. Date

FEB 17 1943

Time
0700

Max. 18	Wind F WSW 5	Barom. t 59	General Obs. ↓
Min. -2	Vis. km. 8	P. 28.93	0345 1x1° 0510
Dry 18	Clouds 10	(red.) 28.85	0510 *° 0715
Wet 18.2 17.7	AS		0715 1x1° 1320 1511 *° 1530
R.H. 93		Morn. OVC, SNOW	Foren. OVC, SNOW
Precip. T mm / T in.		Noon pty cly → cld SNOW FLURRIES	Aftern. pty cly → cly SNOW FLURRIES
Snowfall / -Depth 0.1 in / 0.6 in.		Eve. cly pty cly cld	Night cld
AM 0715			

T	(13)	-30 + 8	38	-1.7	2.9
3					
1					
-5					
-4					
-8					
-5					
-2					
-3					
3					
1					

STATE COLLEGE, Pa. Date

FEB 18 1943

Time
0700

Max. 28	Wind F NW 3	Barom. t 61	General Obs. L ² ∞	1100 - 1110 ° 1210 - 1215 ° ca 2m.
Min. 3	Vis. km. 30	29.35		1050 (p) 1100 cs neb.
Dry 4	Clouds 1	(red.) 29.26		
Wet 3.5	Fc, aul			
R.H. 86		Morn. Fair	Foren. Fair	cc
Precip. .4 mm / .02 in.		Noon Fair cc, cs, cum, & fm	Aftern. Fair	
Snowfall / -Depth .2 in / .8 in.		Eve. Fair	Night Fair → clear	
A.B. 0725				

4
 7
 3
 3
 7
 2
 -2
 0
 6
 4
 0
 3
 -7
 + P. ... (14) ... 18 ± 33 ... 53 ...
 +17
 +12 3.8

STATE COLLEGE, Pa. Date

FEB 19 1943

Time
0700

Max. 35	Wind F WNWS	Barom. t 65	General Obs. ob	1730 6 in. wind -1745
Min. 3	Vis. km. 12	P 29.12		
Dry 35	Clouds X	p (red.) 29.02		
Wet 30				
R.H. 55		Morn. Clear	Foren. Clear	
Precip. — mm / — in.		Noon Clear	Aftern. Fair Overcast & wind.	
Snowfall, - Depth — in / — in.		Eve. Fair → 8th day	Night cldy	
AB.				

Handwritten notes on lined paper, including the expression $(29) - 7 + 75$ and the number 82 .

$(29) - 7 + 75$

82

$+ 2.3$

28

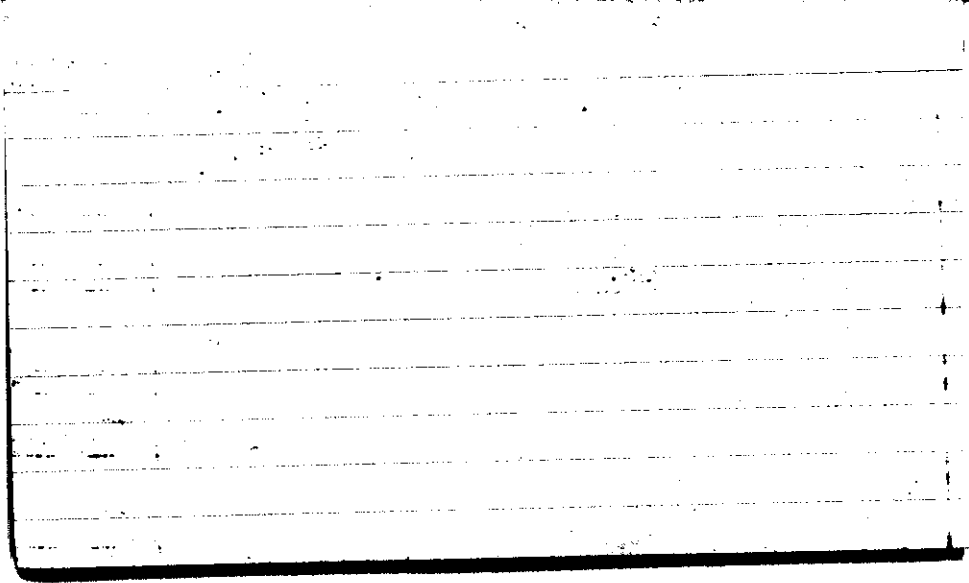
$+ 2.8$

Handwritten numbers in a vertical column: 7, 6, 5, 4, 3, 2, 1, 0.

STATE COLLEGE, Pa. Date FEB 20 1943

Time 0700

Max. 53	Wind F SW 4	Barom. t 70	General Obs. ∞ ∞
Min. 35	Vis. km. 14	p 28.84	0215-0230 ∞ 1845-1945 ∞ 1945-2120 ∞ 2140-2210 ∞ 2210-2300 ∞
Dry 44	Clouds 8	p(red.) 28.73	
Wet 42.0	AC		
R.H. 87		Morn. cldy	Foren. cldy to pty dty
Precip. — mm / T in.		Noon pty dty	Aftern. pty dty to dty
Snowfall/-Depth — in / T in.		Eve. are shown	Night over. shower rain.
A.B.			



STATE COLLEGE, Pa. Date

FEB 21 1943

Time

0700

Max. 61	Wind F WNWS	Barom. 74	General Obs. <i>as obs.</i>	
Min. 44	Vis. km. 8	28.75	☉ 1100	☉ 2145
Dry 45	Clouds 9	(red.) 28.63		
Wet 42.8	Ac, As			
R.H. 84		MOON. <i>cldy.</i>	Foren. <i>cldy</i>	
Precip. 2.3 mm/.09 in.		Noon <i>Pty Cldy</i>	Aftern. <i>Pty Cldy</i>	
Snowfall/Depth in/ in.		Eve. <i>Pty Cldy</i>	Night <i>Pty Cldy - cldy</i>	

A. B. 0730

Handwritten notes on lined paper, including the following text and numbers:

8-
1-
4-
2-
11-
19
-15 + 4
-2.8
4.8

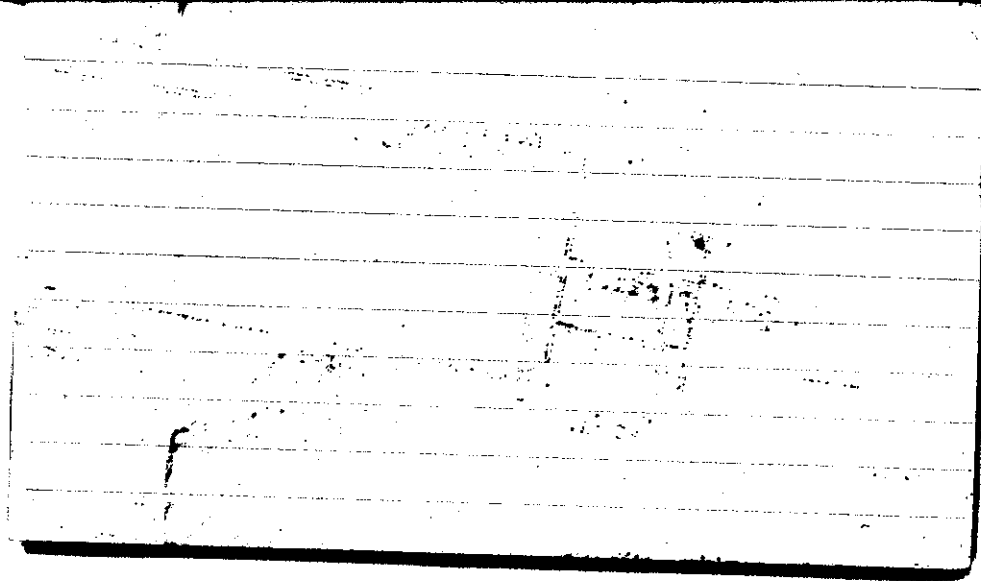
STATE COLLEGE, Pa. Date

FEB 22 1943

Time
0700

Max. 55	Wind P WSW 2	Barom. t 75	General Obs. = 1
Min. 37	Vis. km. 6	28.81	
Dry 40	Clouds 10	p(red.) 28.68	
Wet 39.9	A, S, C.		
R.H. 99		Morn. Overt. Foggy	Foren. Overt. foggy
Precip. — mm/ — in.		Neon P.H. 4.4 → Fair	Aftern. clear → Fair
Snowfall/-Depth — in/ — in.		Eve. Fair → Clear	Night Clear → Fair

A.B.

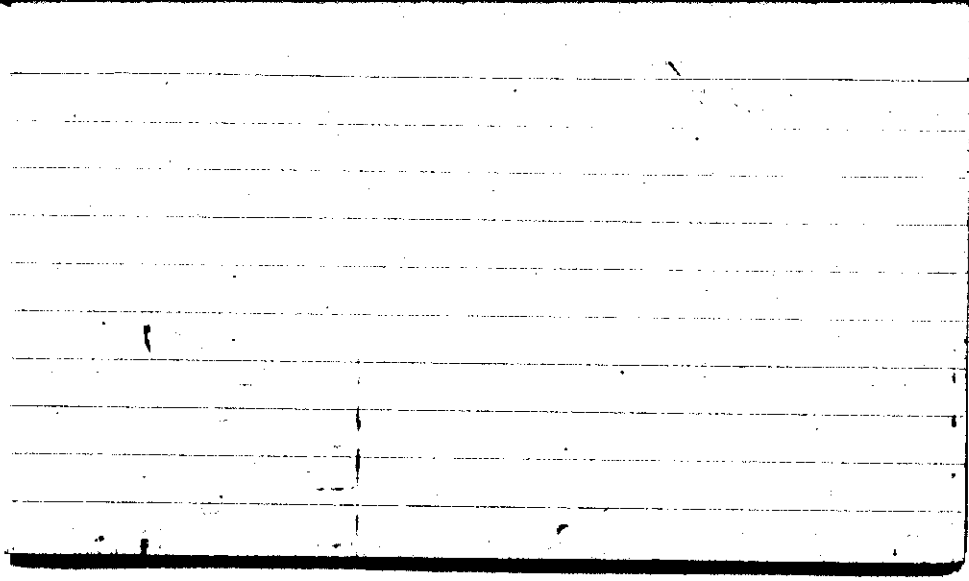


STATE COLLEGE, Pa. Date

FEB 23 1943

Time
0700

Max. 57	Wind P SW 1	Barom. t 75	General Obs. = ° L'	1530 ° -1550 ° as flow
Min. 33	Vis. km. 9	28.82		
Dry 34	Clouds 1	p(red.) 28.70		
Wet 32.9	G, Gpot			
R.H. 90		Morn. Fair 2, Gpt. a, loc	Foren. Fair G, loc	
Precip. mm/ in.		Noon Fair	Aftern. Pthy cldy cc aft of, loc in pra	
Snowfall/-Depth in/ in.		Eve. Pthy. cldy.	Night Pthy cldy → cldy	
A.B.				



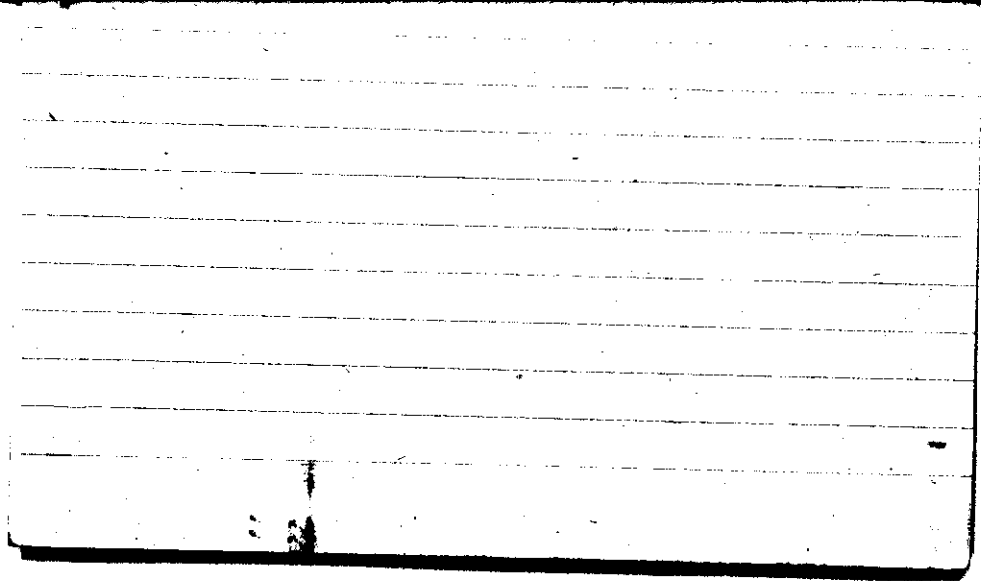
STATE COLLEGE, Pa. Date

FEB 24 1943

Time
0700

Max. 66	Wind P W3	Barom. t 76	General Obs. 0410 v° 0415	R 1140
Min. 34	Vis. km. 10	p 28.56	0420 v° 0505	1105 v° 1120
Dry 54	Clouds 10	p(red.) 28.44	0515 v° 0640	
Wet 50	Fe, Sc, As		0705 v° 0835	
R.H. 78		Morn. Ovcst. Rain	Foren. Ovc.,	
Precip. 9 mm / .04 in.		Noon Cldy → Ovc. Rain Shower	Aftern. Cldy	
Showfall/-Depth in/ in.		Eve. Cldy → Pth Cldy	Night Pth Cldy	

F.B. 0787

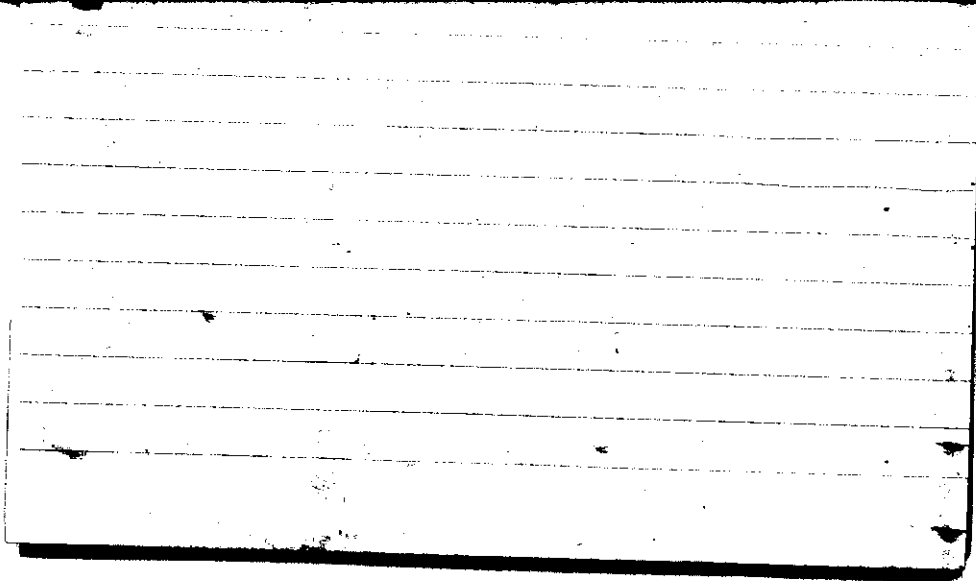


STATE COLLEGE, Pa. Date

FEB 25 1943

TIME
0700

Max. 56	Wind P NW 2	Barom. t 72	General Obs. 00	1030 °
Min. 25	Vis. km. 20	28.94	1110 ° 1130	1100 °)
Dry 25	Clouds 2	p (red.) 28.83	1214 ° 1240	
Wet 24.7	Ac len.			
R.H. 82		Morn. Fair	Foren. pty cldy	to wet is a bit of fog
Precip. 2.3 mm / 0.09 in		Noon Cldy → Ovc.	Aftern. cldy → pty cldy	
Snowfall / -Depth		Eve. Fair → Clear	Night Clear	
— in / — in				
A.M. 0715				



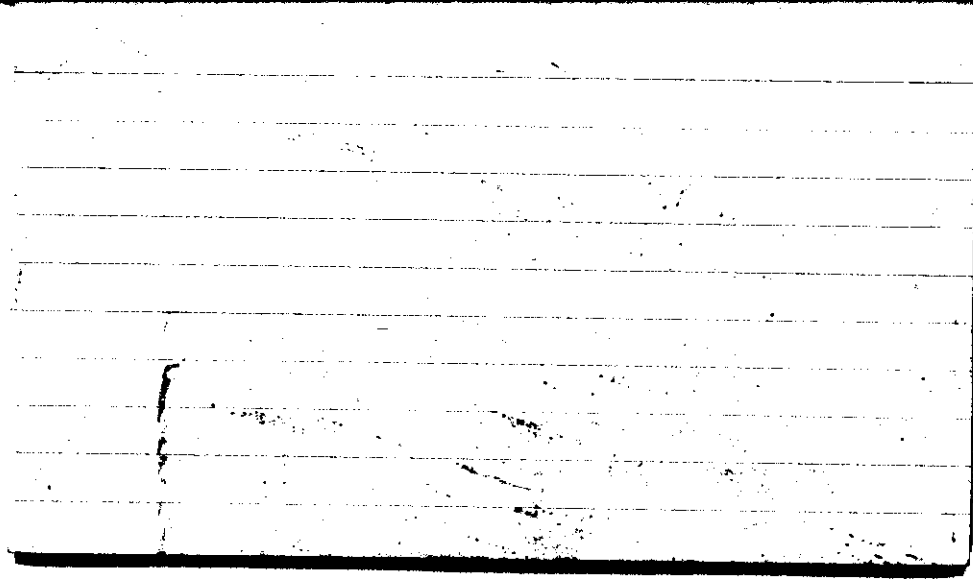
STATE COLLEGE, Pa. Date

FEB 26 1943

Time

0700

Max. 34	Wind F. S 3	Barom. t 71	General Obs.	
Min. 23	Vis. km. 7	28.73	0510 *° 0845	1810 1910
Dry 25	Clouds 10	p(red.) 28.62	0845 *° 1000	1910 1* 12400
Wet 25.0 23.8	As, Fs		1000 *° 1620	
			1620 *° 1645	
R.H. 85		Morn. Ovc. Snow-Light	Foren. sky ovc. with breaks	
Precip. T mm / T in.		Noon sky ovc with breaks	Aftern. sky to ovc snow	
Snowfall/-Depth T in / T in.		Eve. sky ovc with breaks	Night Pfly cdy	
AM. 0720				



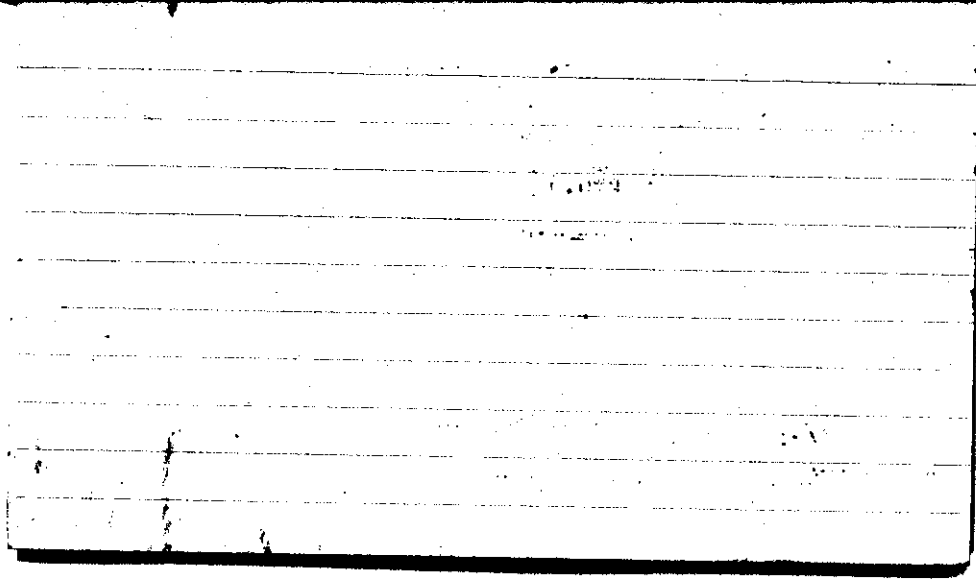
STATE COLLEGE, Pa. Date

FEB 27 1943

Time

0700

Max. 34	Wind F WNWS	Barom. 66	General Obs. 0000/x1°0330	
Min. 16	Vis. km. 25	28.62	0330 5°0345	
Dry 16	Clouds 6	p(red.) 28.52	0345 *°0730	
Wet 15.8 14.4	Sc, Fc		0730 1x1°1215	
R.H. 76		Morn. Ptlly cldy Light Snow	Foren. Ptlly cldy Snow Flurries	
Precip. 1.2 mm/0.06 in.		Noon Ptlly cldy Snow Flurries	Aftern. Ptlly cldy	
Snowfall/-Depth 0.6 in/ 0.3 in.		Eve. Ptlly cldy → cldy	Night cldy	
AM. 0740				



STATE COLLEGE, Pa. Date

FEB 28 1943

TIME
0700

Max. 31	Wind P SW 5	Barom. t 67	General Obs.	
Min. 15	Vis. km. 30	28.40	1015 *° 1045	
Dry 31	Clouds 8	p(red.) 28.30	1115 *° 1150	
Wet 32.8 28.0	Sc, Ac		1450 *° 1510	
R.H. 53		Morn. cldy → Pcly cldy	Foren. Pcly cldy → Ovc.	Snow Flurries
Precip. T mm/ T in.		Noon cldy Light Snow	Aftern. cldy	Light Snow
Snowfall/ -Depth T in/ T in.		Eve Pcly cldy	Night	Fair
A.M.				

