

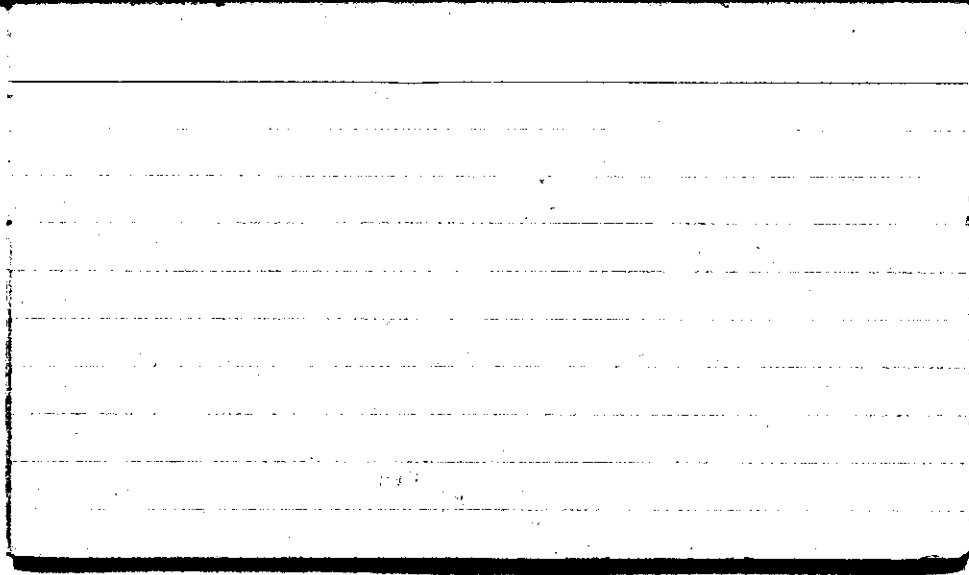
STATE COLLEGE, Pa. Date

JUL - 1 1943

Time

0700

Max. 62	Wind F W 2	Bar [redacted] t 73	General [redacted]
Min. 43	Vis. km. 25	p 29.15	
Dry 50	Clouds ci, ft, ci, dec.	p (red.) 29.03	
Wet 47.5 46.5	ci, mt cc ci, pot ci		
R.H. 85		Morn. Fair	Foren. Fair → Pth cld.
Precip. — mm / — in.		Noon Pth cld.	Aftern. ci, ft, cc, ci, flad Pth cld.
Snowfall / -Depth — in / — in.		Eve. Pth cld.	Night Pth cldy - Fair

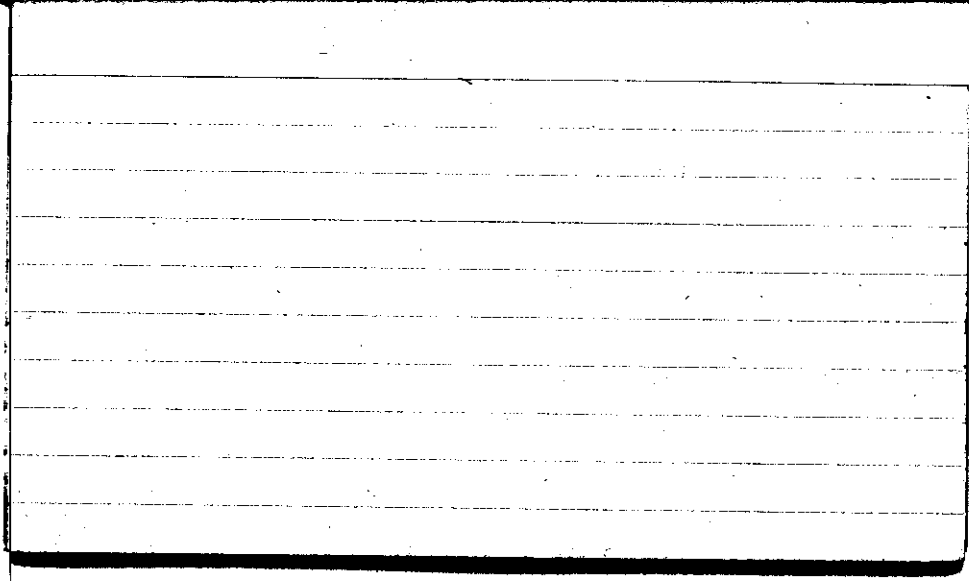


STATE COLLEGE, Pa. Date

JUL - 2 1943

Time
0700

Max. 74	Wind F E 1	Barom. t 76	General Obs. 0'	
Min. 49	Vis. km. 15	29.23		
Dry 54	Clouds 1	p (red.) 29.10		
Wet 53.7 50.7	Ci fil.			
R.H. 82		Morn. Clear	Foren. Fair	
Precip. — mm/ — in.		Noon Fair → pthy Cldy	Aftern. pthy cldy	
Snowfall/-Depth — in/ — in.		Eve. pthy cldy → Fair	Night Fair → Clear	



STATE COLLEGE, Pa. Date

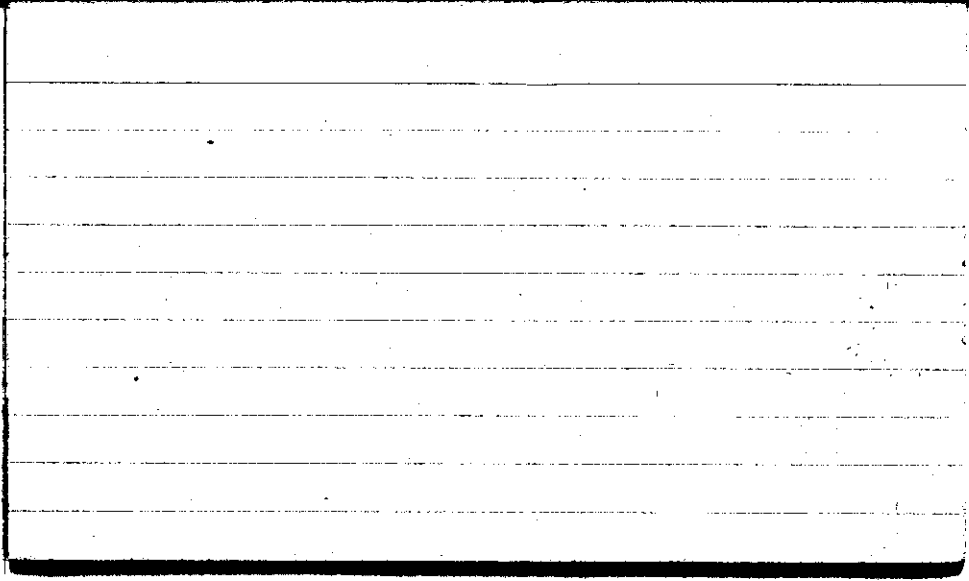
JUL - 3 1943

Time

0700

Max. 77	Wind F WSW 2	Barom. t 78	General Obs. 0935-0940 ☉ in file in am	
Min. 53	Vis. km. 20	29.18		
Dry 64	Clouds 2	p(red.) 29.05		
Wet 65.0	Ac lent, Fe			
56.8	Ci pra.			
R.H. 61	Ci unc.	Morn. Fair	Foren. Fair → Ptly Cldy	
Precip. — mm/ — in.		Noon Pt. clh	Aftern. Pt. clh	
Snowfall/—Denth — in/ — in.		Eve. Fair	Night Fair	

AM.

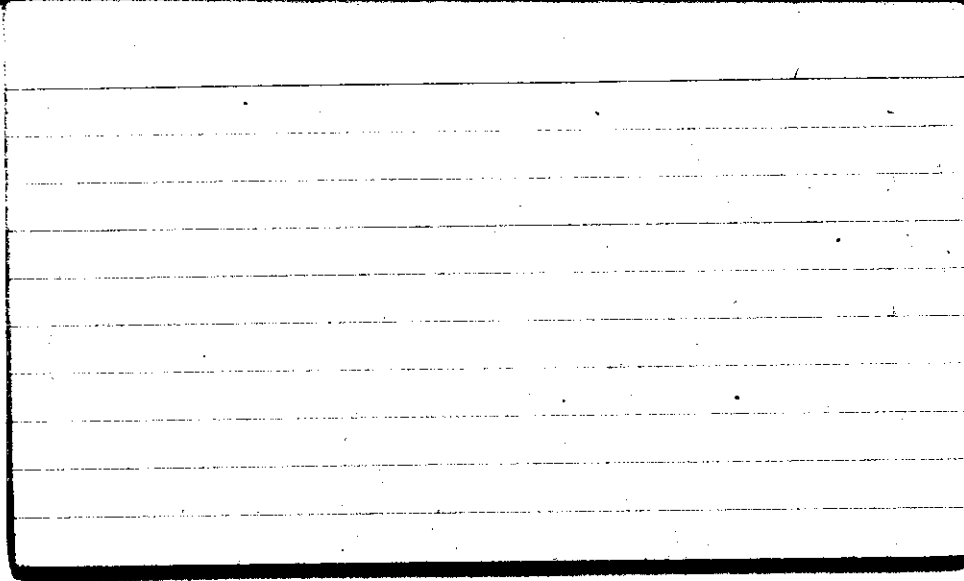


STATE COLLEGE, Pa. Date

JUL - 4 1949

Time
0700

Max. 78	Wind F W 1	Barom. t 74	General Obs. 1250 - 1510 °°
Min. 64	Vis. km. 20	F 28.95	1510 - 1550 °° 1550 - 1650 °°
Dry 67	Clouds 9	p (red.) 2 F 83	1650 - 1800 7'
Wet	Co, Ac, As, Sc, Cu.		1800 - 1900 °° 1900 - 2050 7' 2050 - 2400 9°
R.H. 82		Morn. cldy	Foren. cldy
Precip. — mm/ — in.		Noon ovc	Aftern. cldy rain
Snowfall/-Depth in/ in.		Eve. ovc. Rein	Night ovc. Rein



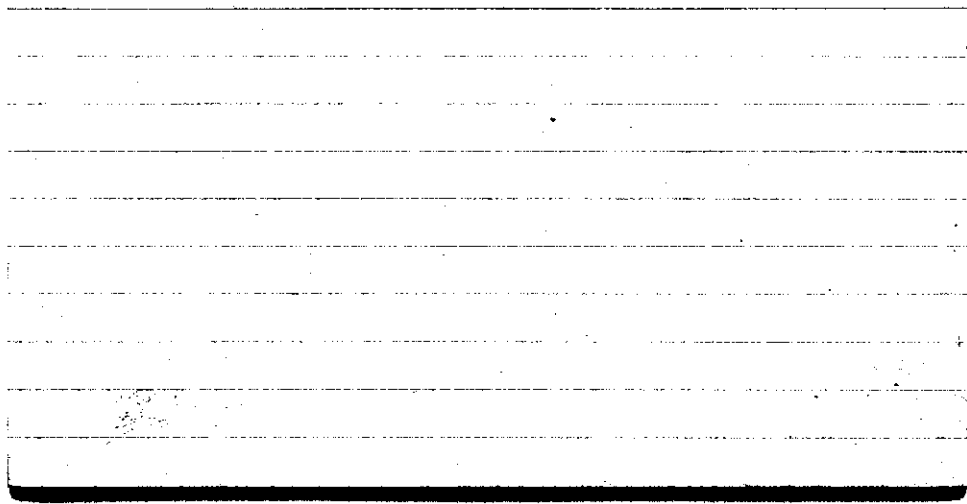
STATE COLLEGE, Pa. Date

JUL - 5 1943

Time

0700

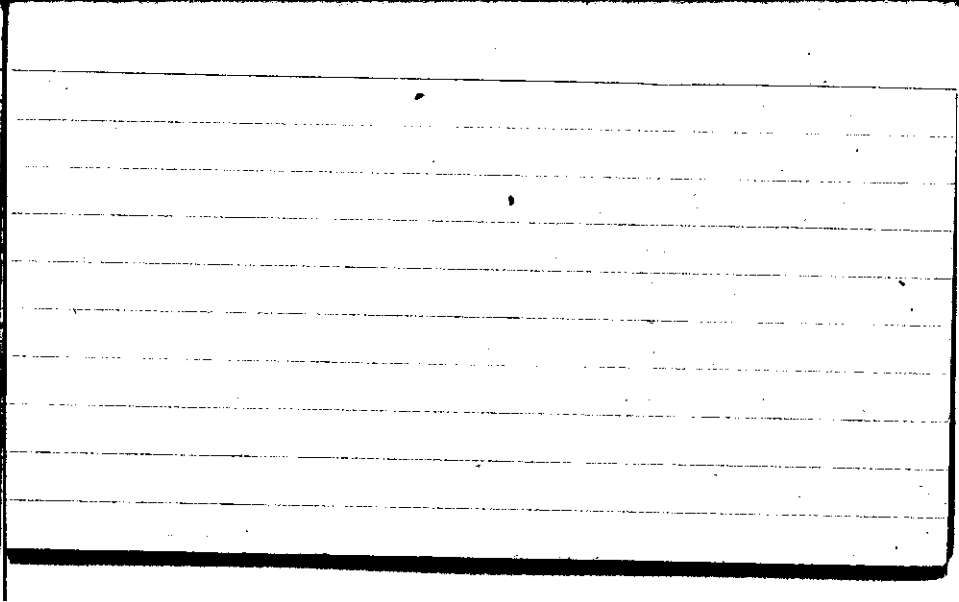
Max. 73	Wind F WSW 2	Barom. t 78	General Obs. 0000-0410 °	Ci nctus Cs str
Min. 66	Vis. km. 6	28.68	0410-0520 °	ci fl cc
Dry 71	Clouds 6	28.55		
Wet 71.8 69.9	Cs, Cc, Ci fil.			
R.H. 92	Fc	Morn. Ptlly cldy	Foren. Ptlly cldy	
Precip. 18.1 mm / 0.71 in.		Noon Ptlly cldy	Aftern. Ptlly cldy	
Snowfall / -Depth — in / — in.		Eve. Fair	Night Fair	
A.M.				



STATE COLLEGE, Pa. Date JUL - 6 1943

Time
0700

Max. 85	Wind F NE 2	Barom. t 74	General Obs. Δ Fog in valley	
Min. 67	Vis. km. 11	28.82		
Dry 68	Clouds 3	p(red.) 28.70		
Wet 68.2	Cs, Ce, Ci, fil, Fe			
R.H. 87		Morn. Fair-ptly cldy	Foren. ptly cldy	
Precip. — mm/ — in.		Noon cldy	Aftern. cldy Ce, Ci, fil	
Snowfall/-Depth — in/ — in.		Eve. ptly cldy	Night ptly cldy	
A.M.				



STATE COLLEGE, Pa. Date JUL - 7 1943

Time
0700

Max. 81	Wind F NE 2	Barom. t 78	General Obs. 0	
Min. 67	Vis. km. 12	28.90		
Dry 69	Clouds 6	p(red.) 38.77		
Wet 69.0	Ac, Fc			
64.4	Cs, Ci,			
R.H. 79	ci fil.	Morn. pty cldy	Foren. cldy	
Precip. — mm/ — in		Noon cldy	Aftern. cldy	
Snowfall/-Depth — in/ — in		Eve. Ovc.	Night Ovc.	
AM.				

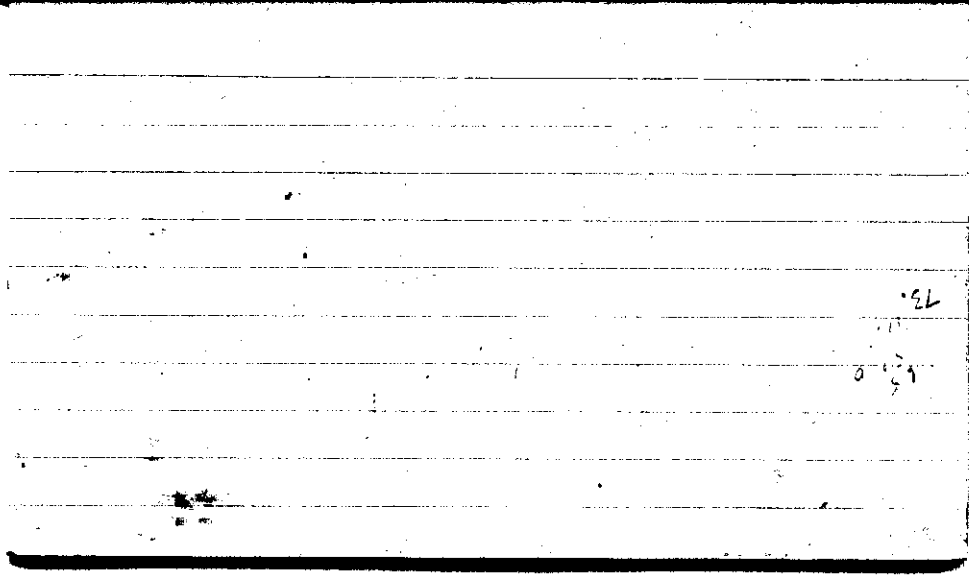
STATE COLLEGE, Pa. Date

JUL - 8 1943

Time

0700

Max. 78	Wind ENE 2	Barom. 77	General Obs.	
Min. 63	Vis. km. 6	28.88	0600-0830 2230-2310 9°	
Dry 63	Clouds 10	p (red.) 28.75	0830-0900 9°	2345-2400 9°
Wet 63.1	As, Fs		1045 9°-1115	
63.1			1215-1350 9°	
R.H. 95		Morn. Ovc. rain	Foren. drizzle	
Precip. 1.7 mm / 0.07 in.		Noon Ovc. rain	Aftern. Ovc. rain	
Snowfall / -Depth		Eve. Ovc.	Night Ovc. Rain	
in / — in.				
A.M.				

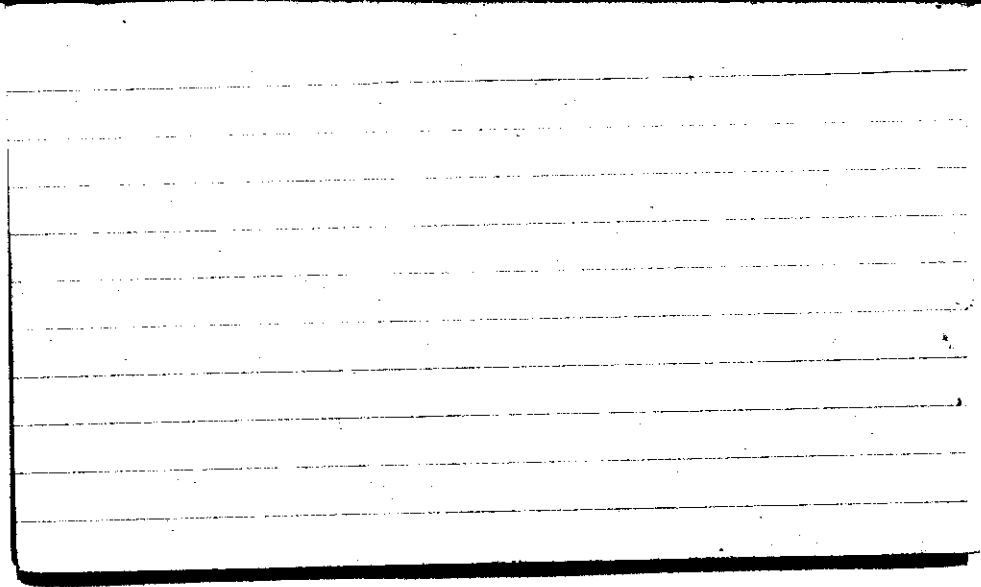


STATE COLLEGE, Pa. Date

JUL - 9 1943

Time
0700

Max. 70	Wind F NW 2	Barom. t 78	General Obs. 00 0000-0015 0'	ci fl ci pd ca neb
Min. 62	Vis. km. 4	28.92	18° 0200, 0300, 0400	1805 0 - 1810
Dry 66	Clouds 10	p (red.) 28.79	2° 0930-0945	1810 0 - 1835
Wet 66.7 65.4	St. As		= 2030-2400	SE 2100
R.H. 93		Morn. OVC.	Foren. OVC.	
Precip. 1.3 mm / 0.09 in.		Noon OVC.	DRIZZLE	Aftern. ovc with breaks
Snowfall/-depth in/ in.		Eve. dry to pky dry	Night o Pky dry	Light Fog
	A.M.			



STATE COLLEGE, Pa. Date

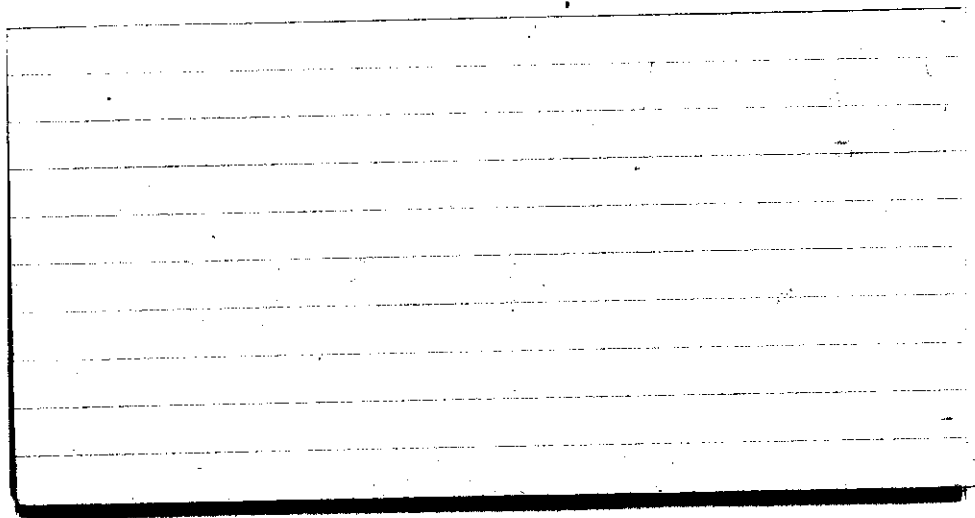
JUL 10 1943

Time

0700

Max. 82	Wind F NE < 1	Barom. t 79	General Obs. = 0-2
Min. 65	Vis. km. 1 1/2	28.93	1100-1130
Dry 69	Clouds > 9	28.80	1740-1920 R
Wet 69.4	St		2115-2330 R
R.H. 95			2330
Precip. T mm/ T in.		Morn. ovc. with breaks Light Fog	Foren. Cldy
Snowfall/ -Depth		Noon Cldy	Aftern. Cldy - Pthy cldy
— in/ — in.		Eve. Ovc., R	Night Ovc., R
		Light Fog	with heavy shower

AM.



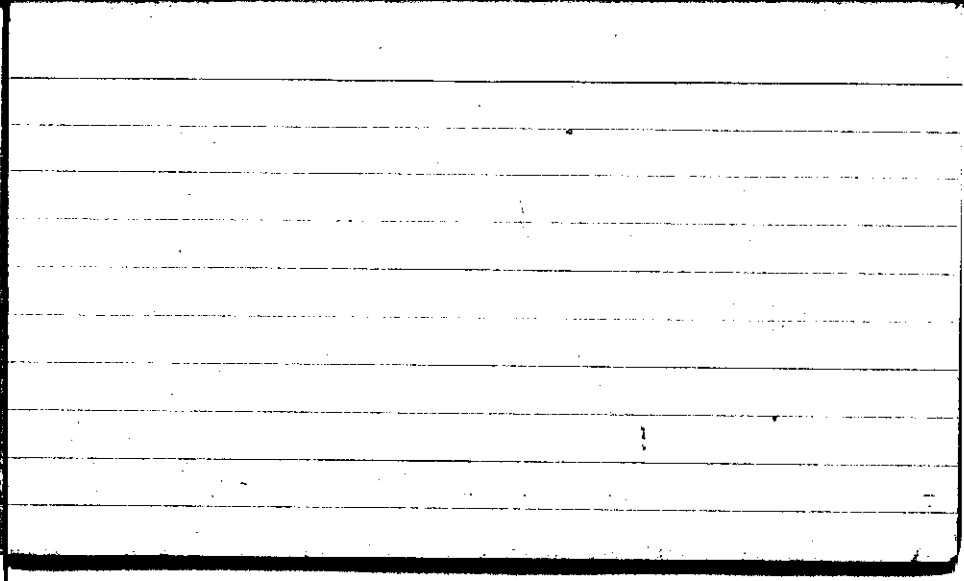
STATE COLLEGE, Pa. Date

JUL 11 1943

Time

0700

Max. 85	Wind F ESE 1	Barom. t 81	General Obs. 0115-0130- \bar{v} ^o	1600 R
Min. 69	Vis. km. 25	28.94	0210-0225- \bar{v} ^o	0950-1020- \bar{v} ^o
Dry 70	Clouds 9	28.80	0320-0330- \bar{v} ^o	1805 . . . -1825
Wet 70.5	Sc, Ac		0430-0530- \bar{v} ^o	a few ci not in, a few as well
R.H. 93		Morn. cldy	Foren. Ovc., Showers	
Precip. 10.4 mm / 0.41 in		Noon cldy \rightarrow pty cldy	Aftern. pty cldy	
Snowfall / -Depth — in / — in		Eve. pty cldy	Night pty cldy	
		AM.		

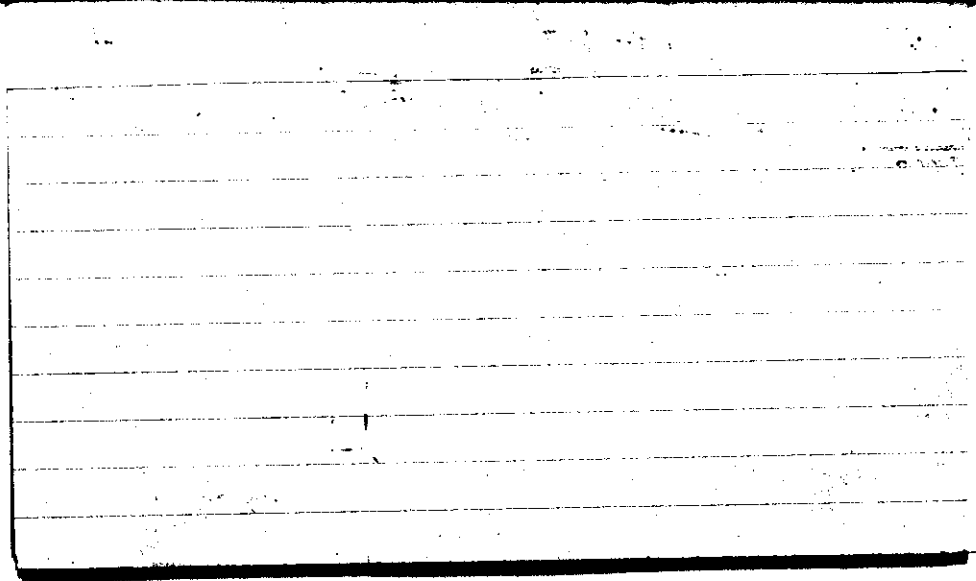


STATE COLLEGE, Pa. Date JUL 12 1943

Time

0700

Max. 85	Wind P W 1	Barom. t 78	General Obs. Δ 0745 - 0815	ci flam smob. ci nat.
Min. 68	Vis. km. 20	28.96	R 1205	
Dry 72	Clouds 7	p (red.) 28.83	R 1320-1410 ² 1410-1420 ² 1420-1445 ² 1425-1435 ²	A
Wet 72.8 69.0	Cu. C. fil. Cs. C. Ci. pra. Ci. vert.			Sp. Ref. 1800-63"
R.H. 83		Morn. pty cldy Ci. flam.	Foren. pty cldy	
Precip. 0.2 mm / 0.0 An.		Noon pty cldy cldy R	Aftern. cldy R Hail	
Snowfall / -Depth — in / — in.		Eve. pty cldy	Night cldy	
AM.				



STATE COLLEGE, Pa. Date

JUL 13 1943

Time

0700

Max. 88	Wind F Calm	Barom. t 82	General Obs. A° K 1400- III SU 60 mph
Min. 67	Vis. km. 13	28.96	1418-1440- \bar{v}^2 1440-1520- \bar{v}^1
Dry 69	Clouds 6	p (red.) 38.82	Lightning hits chimney on S. Allen St. damage
Wet 69.4 66.8	Ac. St	Sp. W. R. 1800 - .67"	
R.H. 88		Morn. pty cldy	Foren. pty cldy
Precip. 15.7 mm / 0.62 in.		Noon pty cldy → Fair	Aftern. cldy R
Snowfall / -Depth — in / — in.		Eve. pty cldy	Night cldy

A.M.

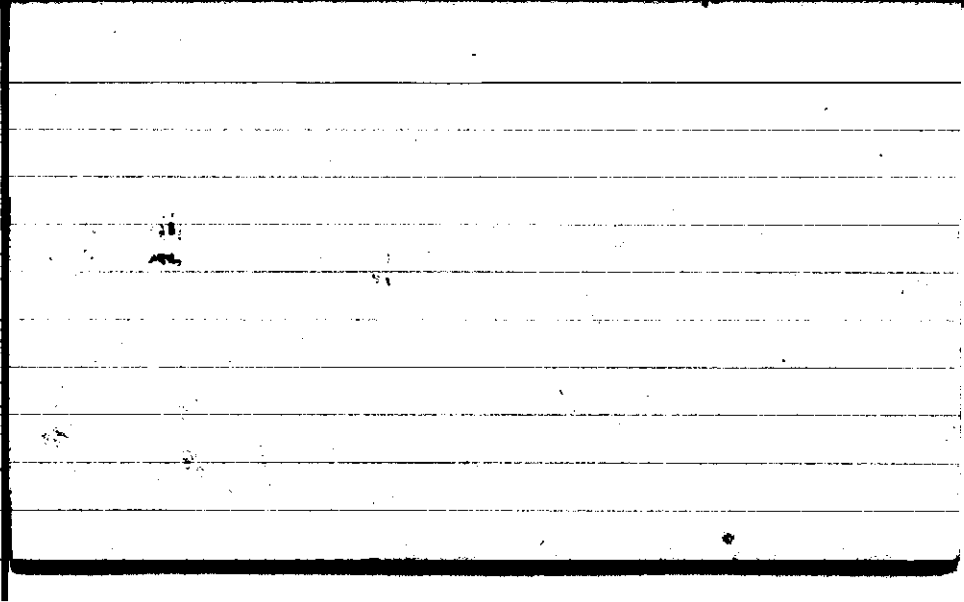


STATE COLLEGE, Pa. Date

JUL 14 1943

Time
0700

Max. 88	Wind F WZ	Barom. t 83	General Obs. = α^2	1640-1700
Min. 75	Vis. km. 3	p 28.85	██████ R ₂ ██████ R ₂	⊙ co met. as met.
Dry 69	Clouds 6	p (red.) 28.71	1700-T 1715- R ₂ 1820-1930- R ₂ -R ₂ 2020-2210-181°	
Wet 67.7 67.8	Ac. St			
R.H. 90		Morn. Ptlly cldy	Foren. Cldy	
Precip. 16.9 mm / 0.67 in.		Noon Cldy - Ptlly cldy	Aftern. Partly cldy	
Snowfall/Depth — in / — in		Eve. Ovc. R ₂	Night Ovc Rain Showers.	
AM				



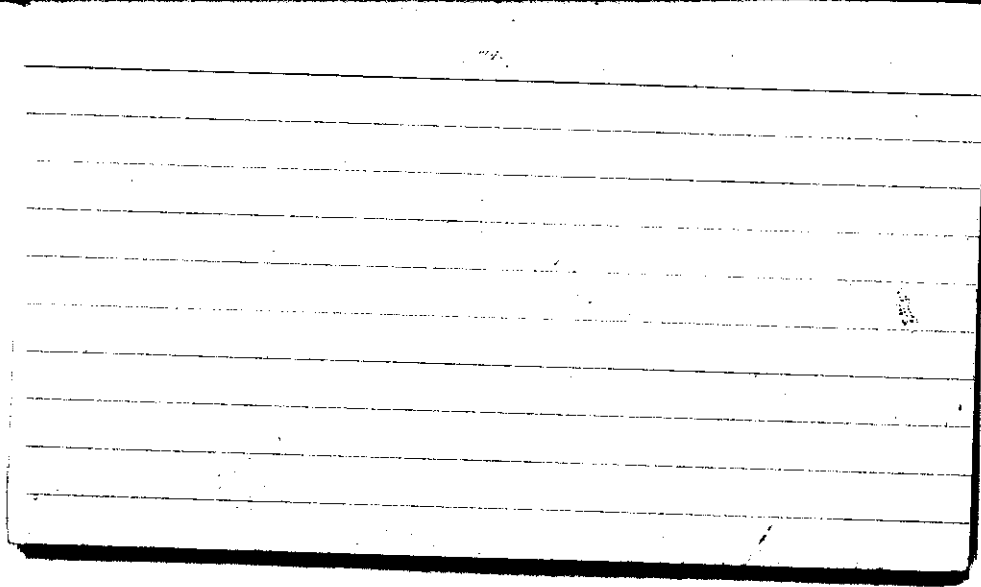
A.M.

JUL 15 1943

Time
0700

STATE COLLEGE, Pa. Date

Max. 87	Wind F WSW 2	Barom. t 82	General Obs. =
Min. 65	vis. km. 3	p 28.82	
Dry 70	Clouds 9	p (red.) 28.68	
Wet 70.0 68.0	Ac, St, Cu		
R.H. 90		Morn. cldy	Foren. pty cldy
Precip. 18.8 mm / 0.74 in		Noon pty cldy	Aftern. Fair
Snowfall/-Depth — in / — in		Eve. Fair	Night Fair - Clear

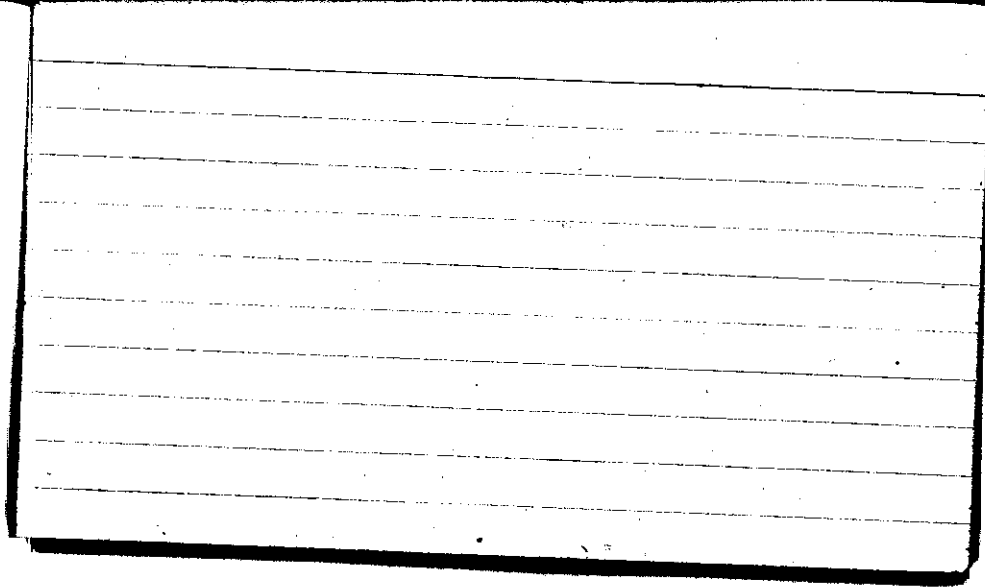


STATE COLLEGE, Pa. Date

JUL 16 1943

Time
0700

Max. 83	Wind F W 2	Barom. t 83	General Obs. 1600 @ - 1700
Min. 62	Vis. km. 25	P 28.92	2045 @ - 2115 @ 0 mb. 2115 @ - 2145
Dry 68	Clouds < 1	p (red.) 28.78	
Wet 68.4	Ac lent. 63.3		
R.H. 76	Ci	Morn. clear - Ci flm Ci pra, Ci fil, Ci unc.	Foren. Fair Cs, Ce, Ci fil.
Precip. — mm / — in.		Noon Fair	Aftern. Fair
Snowfall / -Depth — in / — in.		Eve. Fair Ci pra, Ci unc, Ci flm.	Night cldy (Cs layer)
A.M.			




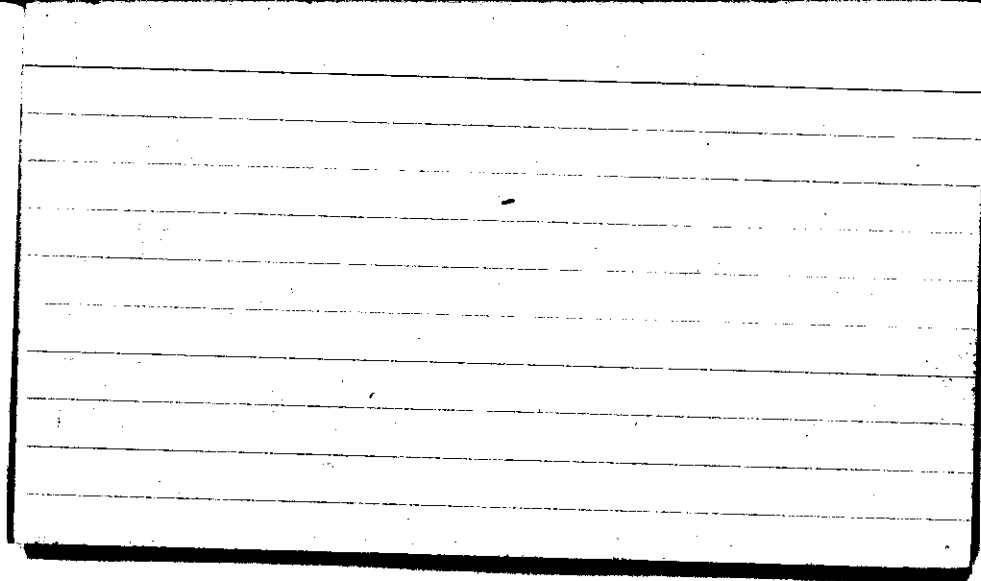
AM.

STATE COLLEGE, Pa. Date

JUL 17 1943

Time
0700

Max. 87	Wind F WSW 2	Barom. t 83	General Obs. Δ 1012 ° 1030	Cs neb.  0630-0700 0700-0750
Min. 63	Vis. km. 25	p 28.95	1130 ° 1145	
Dry 67	Clouds 7	p (red.) 28.81	1245 ° 1315	
Wet 67.1	Ac lent. 64.4		2000 \approx i. SW	
R.H. 87	Cs und., Ci fil., Cs neb.	Morn. pty cldy C.	Foren. cldy Rain	
Precip. — mm / — in.		Noon ovc. Rain Shower	Aftern. cldy \rightarrow pty cldy	
Snowfall / -Depth — in / — in.		Eve. pty cldy	Night cldy Light Fog.	



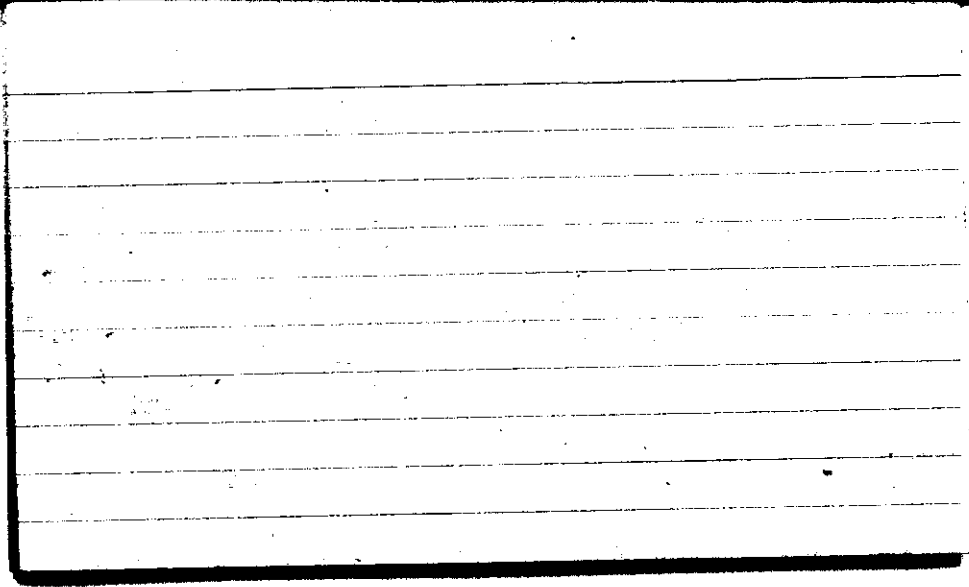
A.M.

STATE COLLEGE, Pa. Date

JUL 18 1943

Time
0700

Max. 83	Wind F NW 2	Barom. t 85	General Obs.
Min. 67	Vis. km. 12	p 28.94	1° 0610-0630 , 0230-0610 0610-0630
Dry 72	Clouds 10	p(red.) 28.79	°-1 0610-0630 ° 0700-0715
Wet 72.0 69.2	Sc, As		0610-0630 Sun: 1515-1600
R.H. 87		Morn. ovc., Rain	Foren. cldy
Precip. 1.5 mm / 0.06 in		Noon Pily cldy → Fair Clear	Aftern. Fair Cifil.
Snowfall / -Depth — in / — in		Eve. Pily cldy Fair C, Cifil.	Night Pily cldy

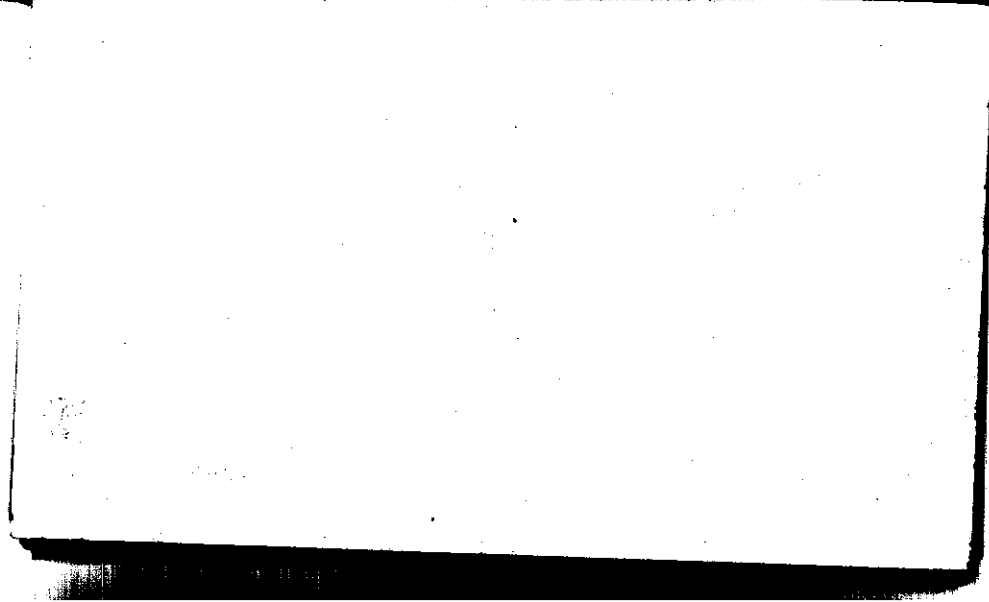


STATE COLLEGE, Pa. Date

JUL 19 1943

Time
0700

Max. 85	Wind F SW 2	Barom. t 28.97	General Obs. WINDS
Min. 61	Vis. km. 30	p 28.97	
Dry 64	Clouds Aclent.	p(red.) 28.83	
Wet 60	4		
R.H. 79%		Morn. Clear	Foren. Clear
Precip. .1 mm / T in.		Noon Cs dens, c fil Clear → Fair	Aftern. Cs dens, c fil, cc. Fair
Snowfall / -Depth — in / — in		eve. c fil Fair	Night Fair → pthly clly

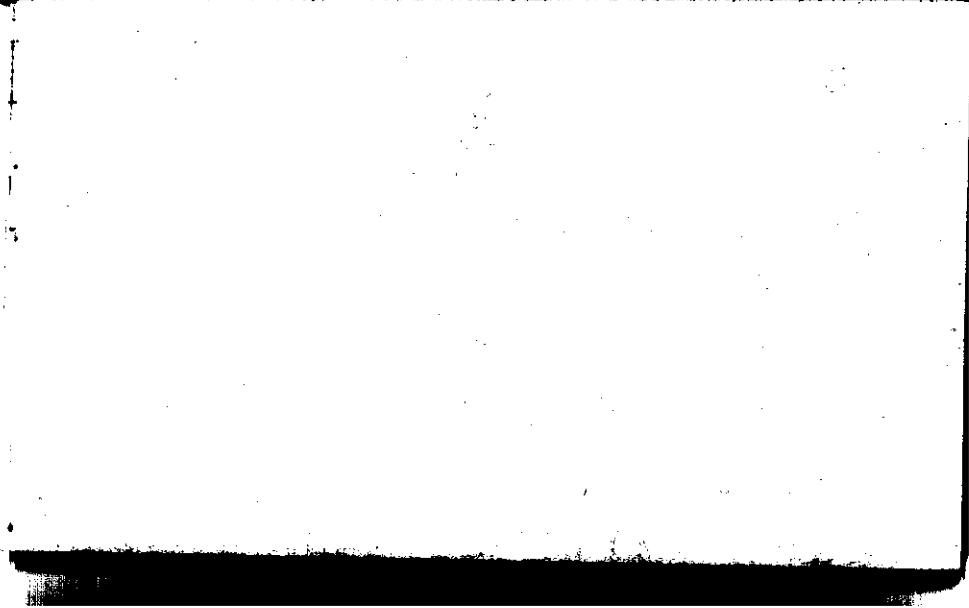


STATE COLLEGE, Pa. Date

Jul 20 1943

Time
0700

Max. 84	Wind F SW 1	Barom. t 86	General Obs. - 0° 25.75 1555 ∇ ° - 1558
Min. 61	Vis. km. 25	p 28.80	
Dry 65	Clouds 8	p(red.) 28.65	
Wet 61	A, A, lent Acc, Acc rad		
R.H. 80	cc	Morn. Pthy. clud.	Foren. Pthy. cely.
Precip. — mm/ — in.		Noon Pthy. cely - Fair	Aftern. Fair → Pthy. cely → cely
Snowfall/ -Depth — in/ — in.		Eve. cely → Pthy. cely → Fair	Night Fair
A.B.			



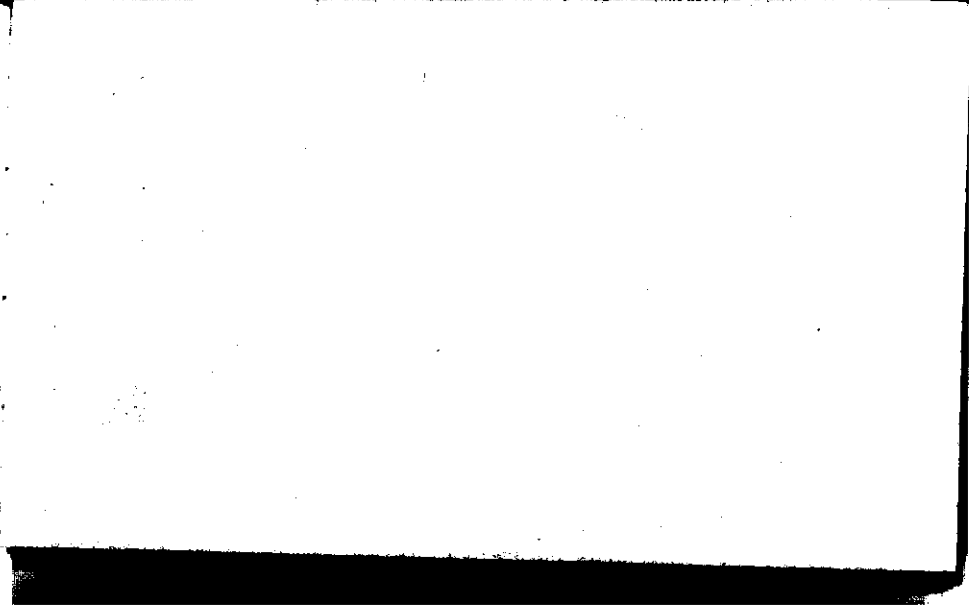
STATE COLLEGE, Pa. Date

JUL 21 1943

Time
0700

Max. 88	Wind F SW 1	Barom. t. 86	General Obs. ∞ 2015 K
Min. 65	Vis. km. 6	p 28.78	2217 \checkmark 2225
Dry 68	Clouds 2	p(red.) 28.63	2226 1/2' 2400
Wet 65	Ac:		
R.H. 88		Morn. <i>csdms, cl</i> Fair	Foren. Pth. cdy.
Precip. — mm / — in		Noon Pth. cdy.	Aftern. Pth. cdy \rightarrow Fair
Snowfall / -Depth — in / — in		Ev. Fair \rightarrow Pth. cdy	Night Pth. cdy \rightarrow cdy \rightarrow ovc \checkmark

A.B.

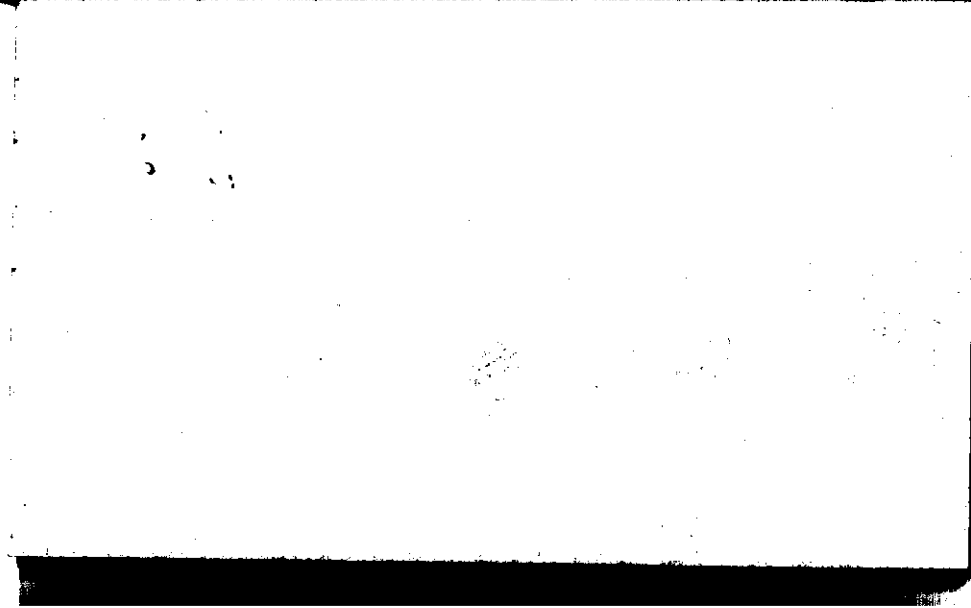


STATE COLLEGE, Pa. Date

JUL 22 1943

Time
0700

Max. 87	Wind F SW 3	Barom. t 85	General Obs. 0105 ∇ 0315	
Min. 65	Vis. km. 20	p 28.70	1705 R 1710 ∇	
Dry 67	Clouds 7	p(red.) 28.53		
Wet 65	Sc, St, Fs C, cc			
R.H. 90		Morn. Ptlly cly.	Foren. Ptlly cly \rightarrow cly	
Precip. 16.3 mm / .64 in.		Noon cly \rightarrow Ptlly cly	Aftern. Ptlly cly \rightarrow cly	
Snowfall / -Depth - in / - in.		Eve. cly \rightarrow Ptlly cly \rightarrow fair	Night Fair \rightarrow Clear	
A.S.				

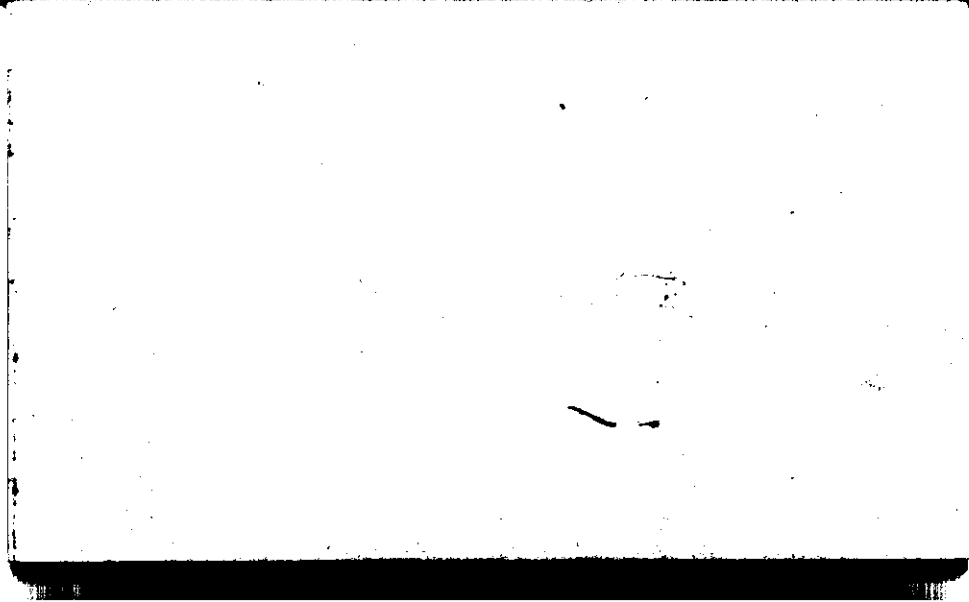


STATE COLLEGE, Pa. Date

JUL 23 1973

Time
0700

Max. 80	Wind F W 1	Barom. t 82	General Obs. 0 ²	
Min. 56	Vis. km. 10	p 28.98	1410 ☉ es den 14-30	
Dry 61	Clouds Cu < 1	p (red.) 28.84		
Wet 58				
R.H. 84	54%: 55% actual 48%	Morn. Clear	Foren. fair to pty cldy	
Precip. T mm / T in		Noon fair	Aftern. Fair	castles, A.F.I.
Snowfall / -Depth — in / — in		Eve. Fair	Night Fair → clear	

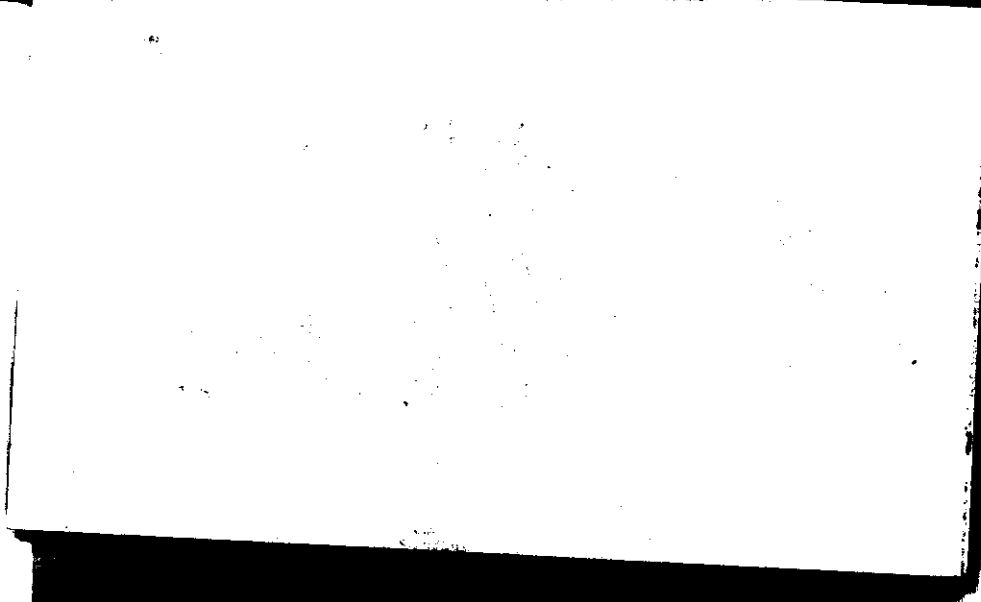


STATE COLLEGE, Pa. Date

JUL 24 1943

Time
0700

Max. 82	Wind F SW 1	Barom. t 78	General Obs. ⁰¹
Min. 60	Vis. km. 16	p 29.05	
Dry 64	Clouds < 1	p (red.) 28.92	
Wet 61	at 1		
R.H. 85		Morn. Clear	Foren. Clear → Fair
Precip. — mm / — in.		Noon Fair	Aftern. Cs dens, cc, Cb flacc Fair → Ptlly cdy
Snowfall / -Depth — in / — in.		Eve. Ptlly cdy → cdy	Night cdy → Ptlly cdy

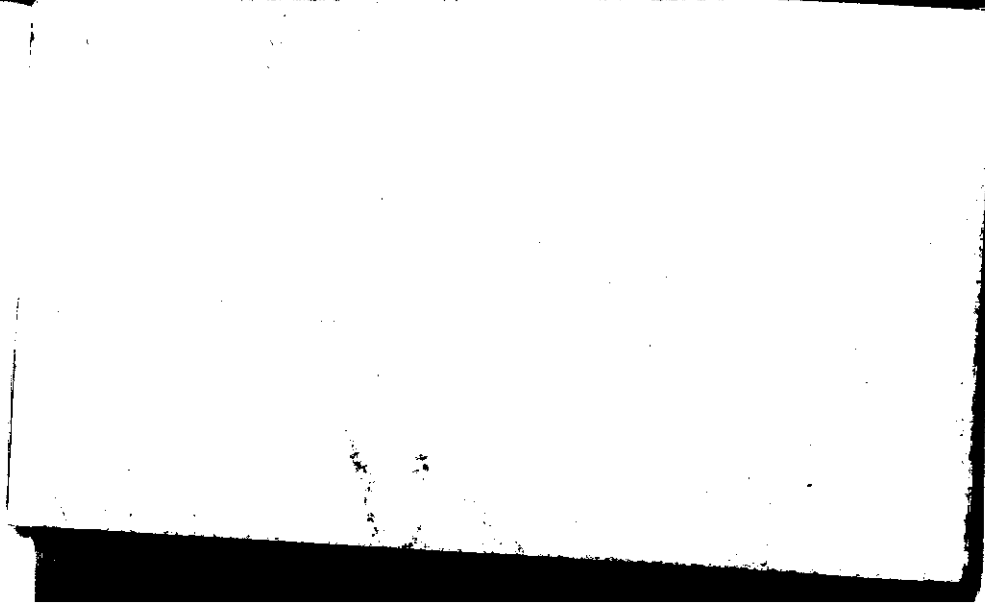


STATE COLLEGE, Pa. Date

JUL 25 1943

Time
0700

Max. 87	Wind F WSW 1	Barom. t 85	General Obs. R-1240-1350 (1242-1330) 1/1° R-1101-1130
Min. 64	Vis. km. 18	p 29.00	
Dry 72	Clouds 8	p (red.) 28.85	
Wet 66	A-		
R.H. 73		Morn. Ptlly. cldy.	Foren. Ptlly cldy
Precip. — mm / — in.		Noon Ptlly cldy	Aftern. cldy R
Snowfall / -Depth — in / — in.		Eve. Ptlly cldy → Fair	Night Fair → R Ptlly cldy
H. R.			



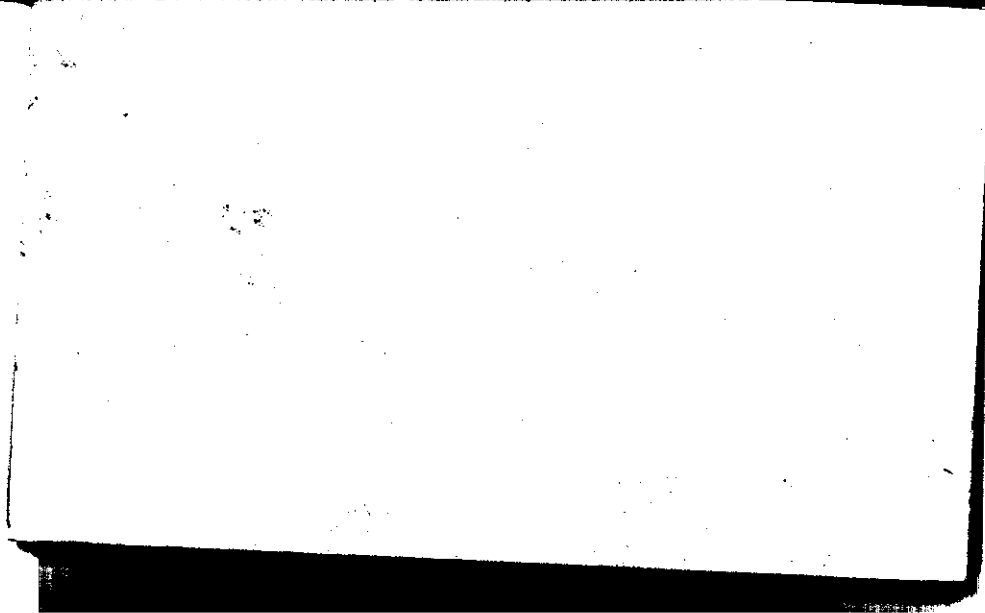
STATE COLLEGE, Pa. Date

JUL 26 1943

Time
0700

Max. 88	Wind F W 1	Barom. t 86	General Obs. = a
Min. 65	Vis. km. 4	p 28.95	
Dry 67	Clouds 10	p (red.) 28.80	
Wet 67.3 65.0	As, Ac.		
R.H. 89		Morn. ovc, Light Fog	Foren. cldy → Ptlly cldy
Precip. T mm / T in.		Noon Ptlly cldy	Aftern. Ptlly cldy
Snowfall / -Depth — in / — in.		Eve. Ptlly cldy → Fair	Night Ptlly cldy

AM.



STATE COLLEGE, Pa. Date

JUL 27 1943

Time
0700

Max. 88	Wind F W 1	Barom. t 85	General Obs. = Δ^2 C _s dens.
Min. 65	Vis. km. 3	28.90	2000 - N R 2005-2140g' -8° 1555-1605
Dry 69	Clouds <1	p(red.) 28.75	
Wet 69.6 67.2	Ci fil.		
R.H. 88		Morn. ☉ Foggy	Foren. Fair
Precip. — mm/ — in.		Moon Fair → pty cldy	Aftern. pty cldy → cldy
Snowfall/ -Depth in/ — in.		eve. cldy → pty cldy	Night cldy

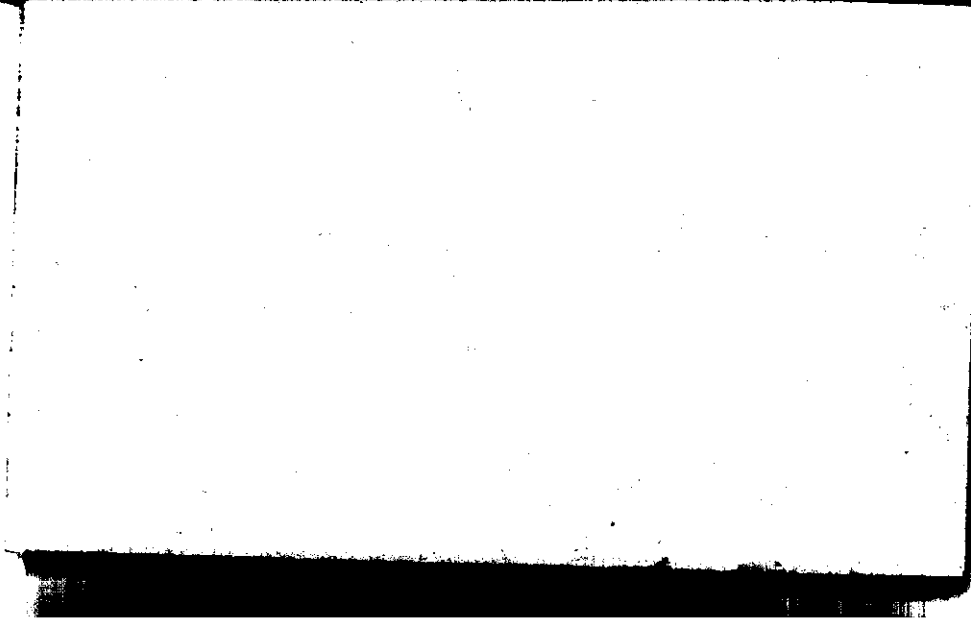
Sunstroke

STATE COLLEGE, Pa. Date

JUL 28 1943

Time
0700

Max. 89	Wind F WNW 3	Barom. t 86	General Obs. ∞		Ci dens.
Min. 63	Vis. km. 5	p 28.83	← 2030 - NE		Ci fil.
Dry 66	Clouds 9	p (red.) 38.68	R 2215-2400 2230-2245		Ci pol.
Wet 66.7 64.7	St, Ci fil.				° 0800-0815
R.H. 90		Morn. cldy	Foren. cldy		
Precip. 11.3 mm / 0.44 in.		Noon cldy → Pthly cldy	Aftern. cldy		
Snowfall / -Depth — in / — in.		Eve. cldy	Night cldy		
A.M.					



STATE COLLEGE, Pa. Date

JUL 29 1943

Time
0700

Max. 85	Wind F W 3	Barom. t 82	General Obs. 1315 ° 1330
Min. 66	Vis. km. 15	28.72	1420 ° 1430
Dry 70	Clouds 9	p (red.) 28.58	1430 ° 1445
Wet 70.0	Se, Fe, Cu, Ci, fil, Cs.		1445 101° 1845
R.H. 80			1900 ° 2115
			2115 ° 2245
		Morn. Cldy	Foren. ovc
Precip. T mm / T in.		Noon ovc rain	Aftern. ovc. Rain
Snowfall / -Depth in / in.		ovc. cldy, Rain	Night ovc., Showers, R.
A.M.			

Suspensions

STATE COLLEGE, Pa. Date

JUL 30 1943

Time
0700

Max. 77	Wind F NW 2	Barom. t 81	General Obs. ∞ 0245 ^g 0330
Min. 61	Vis. km. 8	28.73	
Dry 64	Clouds 9	p(red.) 28.59	
Wet 64.2 62.8	Sc		
R.H. 92		Morn. cldy	Foren. cldy
Precip. 8.8 mm / 0.35 in.		Noon cldy	Aftern. cldy → pty cldy
Snowfall / -Depth — in / — in.		eve. pty cldy → fair	Night Fair → clear
A.M.			

Symbols

STATE COLLEGE, Pa. Date

JUL 31 1943

Time
0700

Max. 81	Wind F W 3	Barom. t 81	General Obs. A ²	c'not
Min. 58	Vis. km. 25	p 28.91	↳ 2000(E) (cb)	c'pd.
Dry 63	Clouds 1	p(red.) 28.77	↳ 2015-W-	c'fil c'fume
Wet 63.3	Cs, Ci fb.			
60.7	Ci fil,			
R.H. 87	Ci unc.	Morn. Fair Cc, Cs	Foren. Clear	
Precip. — mm / — in.		Noon pty cldy	Aftern. pty cldy uncom. cb	
Snowfall/-Depth — in / — in.		Eve. pty cldy cb	Night pty cldy → Fair	
Sum.				

Temperature