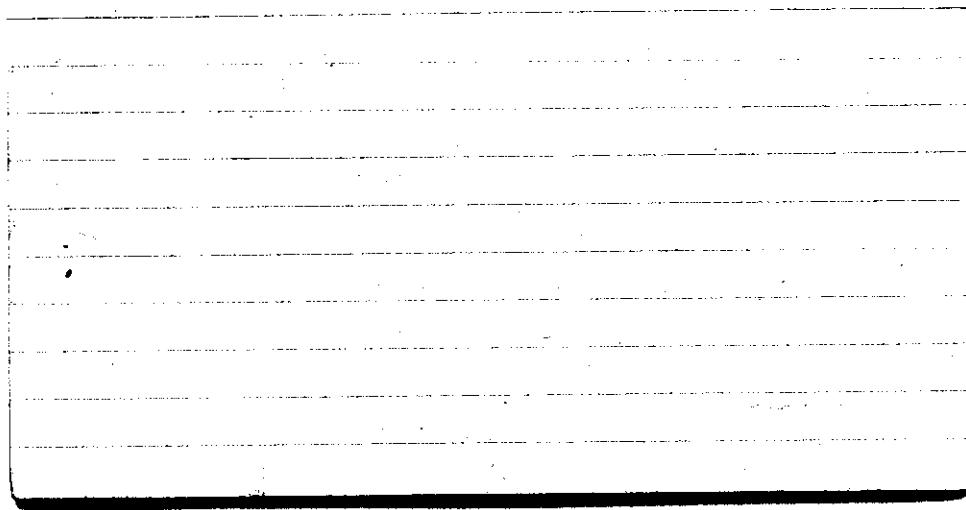


STATE COLLEGE, Pa. Date JUN - 1 1943

Time  
0700

Max. 71	Wind W 2	Barom. 74	General Obs. 0000 - 0640	
Min. 60	Vis. km. 8	p 28.75	011959 - 2200 R	
Dry 67	Clouds 9 Ac, Sc, Sc	p(red.) 28.63		
Wet 66				
R.H. 95		Morn. cldy	Foren. cldy	
Precip. 6.0 mm / .24 in.		Noon cldy	Aftern. pt cldy	
Snowfall / -Depth - in / - in.		Eve. Fair	Night cldy - ovc / 1/2	

20



STATE COLLEGE, Pa. Date

JUN 2 - 1943

Time  
0700

Max. 81	Wind F W 4	Barom. t 78	General Obs. 2953 $\bar{\Delta}$ - 2120
Min. 62	Vis. km. 8	28.59	2015 - 2200 T <sub>2</sub>
Dry 74	Clouds 10	(red.) 28.46	
Wet 69	Cu, St, Sc.		
R.H. 77		Foren. cldy	Foren. cldy
Precip. 3.6 mm / .14 in.		Noon cldy	Aftern. cldy
Snowfall / - Depth - in / - in.		Eve. cldy rainless	Night cldy
elt			

The following reference is missing in the  
College/M.I. Library:

Author:

Title:

Year:

Price:

Purchase is desirable: immediately eventually

Please fill out and give either to Miss  
Luella Jackson or H. Landberg. Your

cooperation is appreciated.

STATE COLLEGE, Pa. Date

JUN 3 - 1943

Time  
0700

Max. 84	Wind F W 3	Barom. t 80	General Obs.	
Min. 70	Vis. km. 15	28.65		
Dry 75	Clouds 5	28.52		
Wet 70	Ca, Fe, C, Sil, Ca, G. fluc.			
R.H. 74		MOON. Pt cldy	Foren. Pt. cldy	
Precip. .02 in / .01 in.		Noon Pt cldy	Aftern. Pt. cldy	
Snowfall, - in / - in.	Depth - in.	Eve. Clear	Night Pt. cldy	
25				

cooperation is appreciated.

Please fill out and give either to Miss  
Lucille Jackson or H. Landberg. Your

Purchase is desirable: eventually

Immediately

Price:

Year:

Title:

Author:

The following reference is missing in the  
College/M.I. Library:

STATE COLLEGE, Pa. Date

JUN 4 - 1943

Time  
0700

Max. 87	Wind F W 1	Barom. t 84	General Obs.	
Min. 72	Vis. km. 15	28.85	10° 1530 - 1620 9° 2245 - 2300 T <sub>2</sub>	
Dry 76	Clouds 7 Cu, P, C, til	(red.) 28.71		
Wet 71	As			
R.H. 78		Morn. cldy	Foren. cldy	
Precip. — mm / — in.		Noon pt cldy	Aftern. pt cldy	
Snowfall, Depth in / in.		Eve. pt cldy to dly T <sub>2</sub>	Night cldy	

cut

The following reference is being in the  
College Library

Author:

Title:

Year:

Price:

Purchase is desirable: immediately

eventually

Please fill out and give either to Mrs

Lucille Jackson or H. Landberg. Your

cooperation is appreciated.



STATE COLLEGE, Pa. Date

JUN 5 - 1943

Time  
0700

Max. 89	Wind F NW 1	Barom. t 86	General Obs. ci file u ci mme	
Min. 70	Vis. km. 20	28.94		
Dry 73	Clouds 3	(red.) 28.79		
Wet 66	Cu. h km ci.			
R.H. 69		Morn. Fair	Foren. Fair	
Precip. T in/ T in.		Noon Clear	Aftern. Clear	
Snowfall, Depth - in/ - in.		Eve. Fair	Night Clear	
24				

The following reference is missing in the  
College/M.I. Library:

Author:

Title:

Year:

Price:

Purchase is desirable; immediately  
eventually

Please fill out and give either to Miss

Lucille Jackson or H. Landberg. Your

cooperation is appreciated.

STATE COLLEGE, Pa. Date

JUN 6 - 1943

Time

0700

Max. 84	Wind P NE 3	Barom. t 84	General Obs. 1540 10° - <del>1750</del> 1750
Min. 55	Vis. km. 30	29.04	9' 2190 - 2200
Dry 58	Clouds 2	p (red.) 28.90	101° 2200 - 2400x
Wet 55	As Cifil, Cs.		
R.H. 89		MORN. Fair	Foren. Fair
Precip. — in/ — in		Noon Fair	Aftern. Pt. Cldy
Snowfall/Depth — in/ — in		Eve. Cldy <del>rain</del> shower	Night Cldy rain

clt

The following reference is missing in the  
College/M.I. Library:

Author:

Title:

Year:

Price:

Purchase is desirable: immediately

eventually

Please fill out and give either to Miss  
Lucille Jackson or H. Landberg.

Your

cooperation is appreciated.

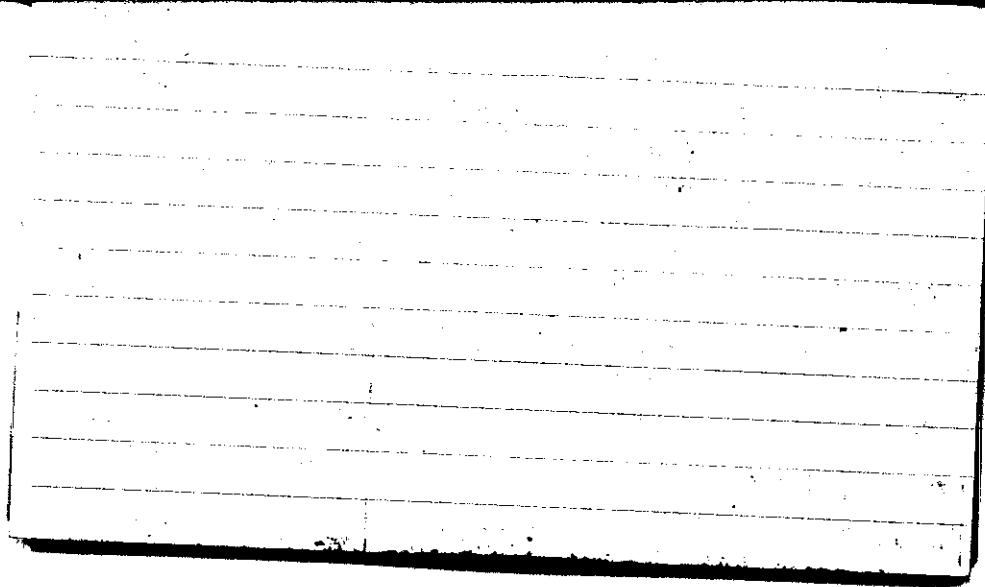
STATE COLLEGE, Pa. Date

JUN 7 - 1943

Time

0711

Max. 84	Wind P NNE 3	Barom. t 84	General Obs. 0000 - 0245 101°	ci fil
Min. 64	Vis. km. 0.3	28.88	0248 - 0330 8' B	
Dry 64	Clouds 10	p(red.) 28.74	0330 - 0445 0.0 1150 - 1200 0.1 1230 - 1330 0.1	
Wet 64	st.		2240 - 2400 0	
R.H. 100		Morn. ovc fog	Foren. ovc	
Precip. 10.7 mm / 0.33 in.		Noon ovc	Aftern. cldy	
Snowfall / -Depth - in / - in		Eve. 17 cldy - Fair	Night 10.00 - 11.00 Fair	
CLT				

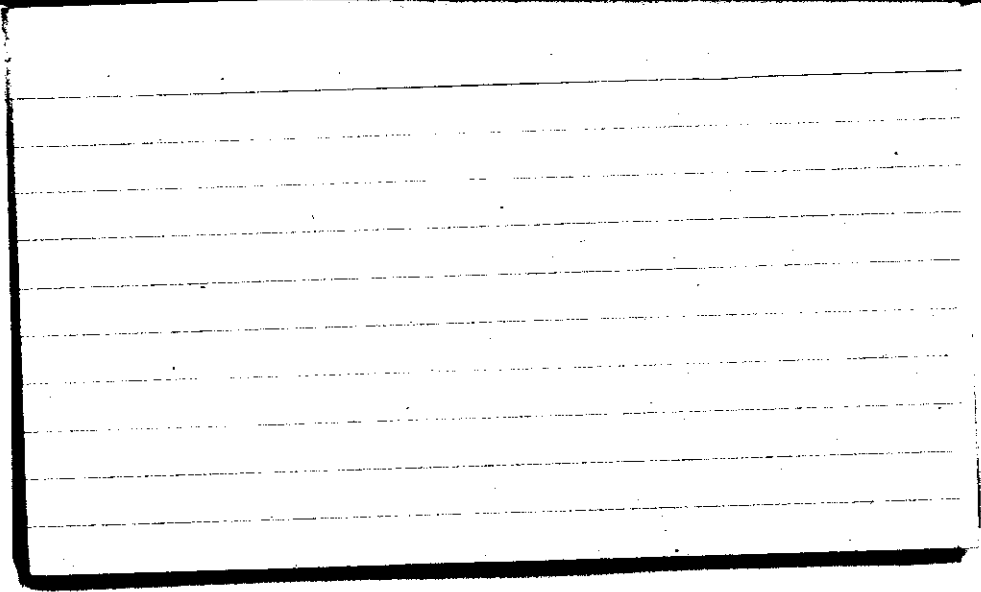


STATE COLLEGE, Pa. Date JUN 8 1943

Time  
0700

Max. 75	Wind F NE 2	Barom. t 76	General Obs. 0330 - 0400 9°	
Min. 54	Vis. km. 1.5	P 29.02	0630 - 0740 9°	
Dry 55	Clouds 10	p(red.) 28.90	1120 - 1250 9°	
Wet 55	Ns		2310 - 24+ 0°	
R.H. 94		Morn. drizzle	Foren. ovc	
Precip. 1.5 mm / 0.06 in.		Noon ovc drizzle	Aftern. cldy	
Snowfall/-Depth in/ in		Eve. cldy	Night ovc rain	

22





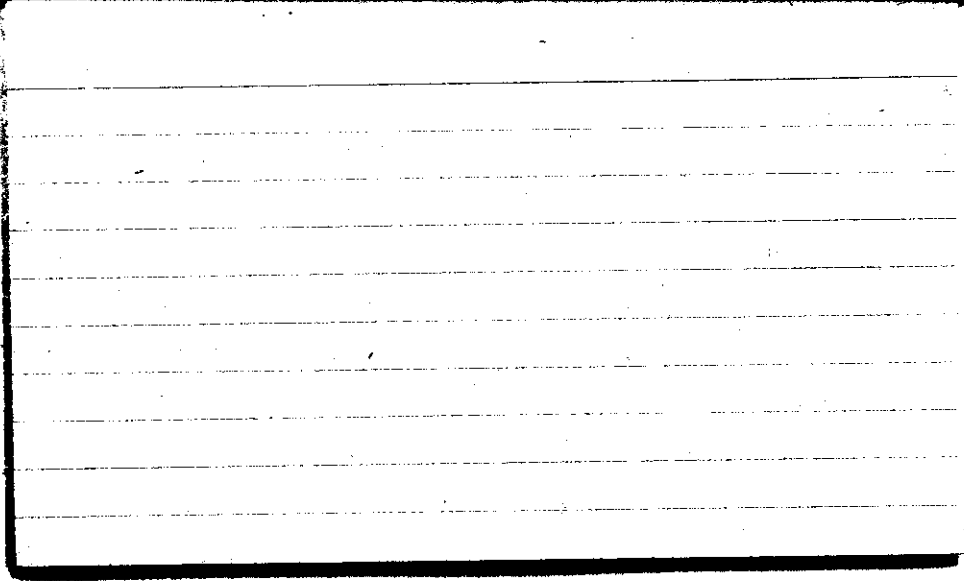
STATE COLLEGE, Pa. Date

JUN -9 1943

Time

0700


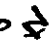
Max. 66	Wind F NE 2	Barom. t 76	General Obs. ≡ •°	
Min. 55	Vis. km. 1	28.99	0000 - 0030 •°	
Dry 57	Clouds 10	p(red.) 28.87	0030 - 0345 •°-1	
Wet 57	Ns		0345 - 0530 •°	
R.H. 100			0530 - 0700   •°	
Precip. 3.6 mm/0.14 in.			Morn. ovc rain fog	Foren. ovc
Snowfall/-Depth — in/ — in.			Noon ovc	Aftern. ovc
			Eve. ovc	Night ovc

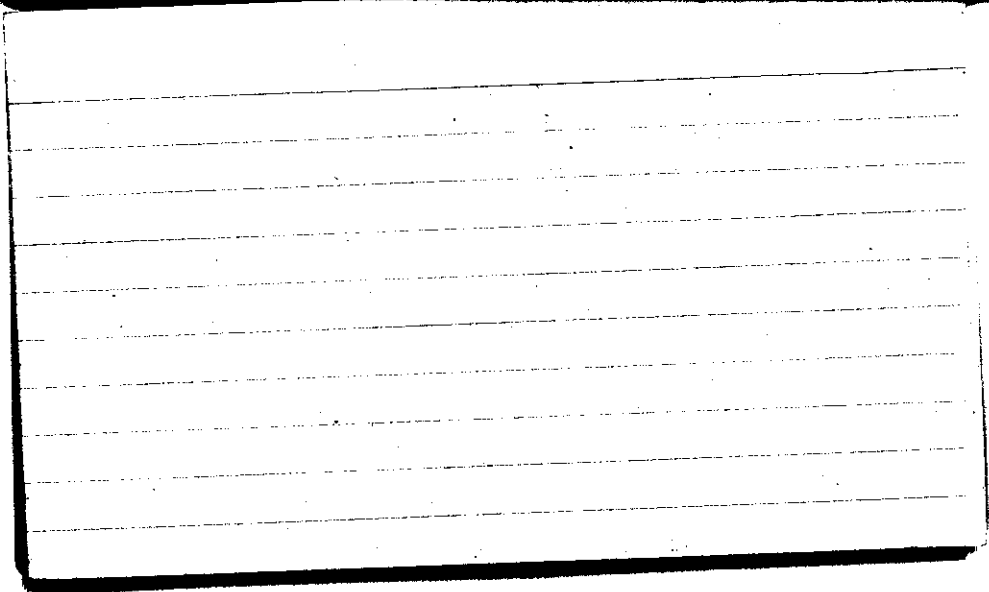


STATE COLLEGE, Pa. Date

JUN 10 1943

Time  
0700

Max. 59	Wind F SW 2	Barom. t 72	General Obs. = 1230-1250  ci fd ci from to neb. 2130 
Min. 56	Vis. km. 2	28.94	
Dry 59	Clouds 10	p(red.) 28.83	
Wet 57	5+		
R.H. 89		Morn. ovc	Foren. ovc
Precip. 0.35 mm/0.01 in.		Noon ovc	Aftern. cldy to ptly cldy
Snowfall/-Depth - in/ - in.		Eve. fair heavy to cldy 57	Night cldy

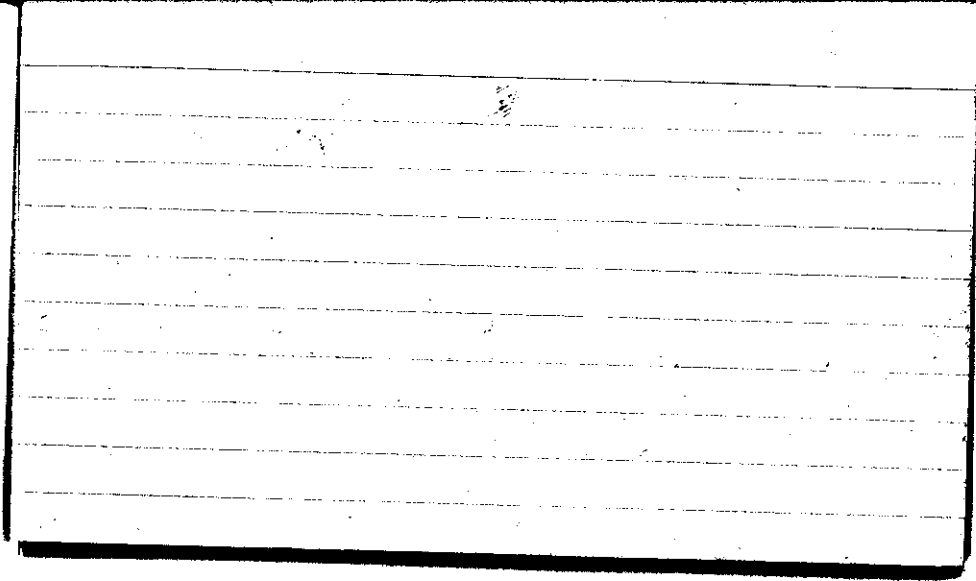


STATE COLLEGE, Pa. Date

JUN 11 1945

Time  
0700

Max. 71	Wind F calm	Barom. t 73	General Obs. 0420 - 0655/91°	
Min. 58	Vis. km. 0.3	28.89	ci den ci fil cs neb	
Dry 60	Clouds 10	p(red.) 28.77		
Wet 60	st.			
R.H. 100		Morn. Fog drizzle	Foren. pt. cldy	
Precip. 1 mm / 1 in.		Noon pt. cldy	Aftern. ci den cs neb ci fil pt cldy	
Snowfall/-Depth - in / - in.		Eve. Fair	Night Fair	
267				



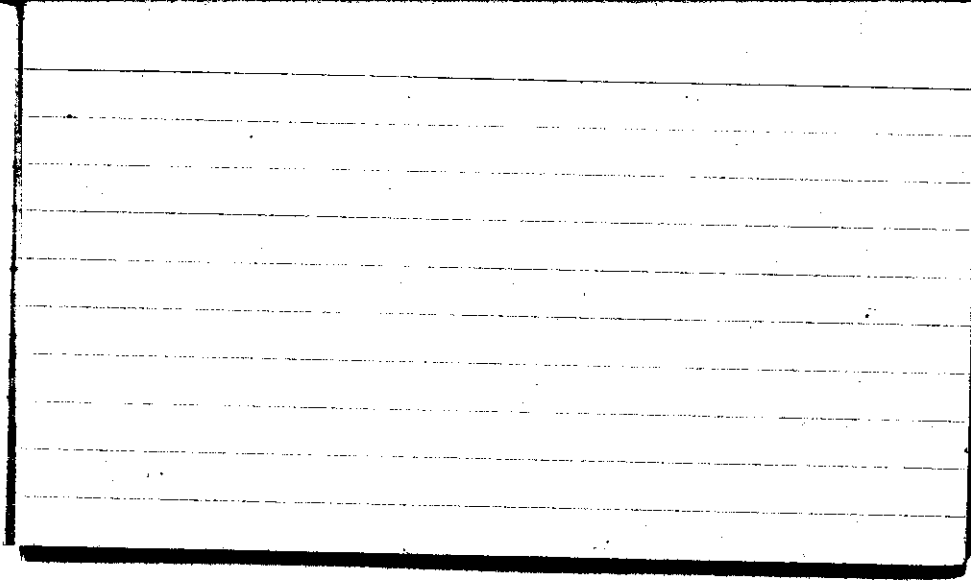
STATE COLLEGE, Pa. Date

JUN 12 1943

Time  
0700

Max. 81	Wind F 51	Barom. t 76	General Obs.	
Min. 60	Vis. km. 10	28.98		
Dry 65	Clouds 8	p(red.) 28.86		
Wet 61	As, Ac			
R.H. 71		Morn. <i>Clody</i>	Foren. <i>Pt. cldy</i>	
Precip. — mm/ — in.		Noon <i>Pt. cldy</i>	Aftern. <i>Pt. cldy</i>	
Snowfall/ -Depth in/ in.		Eve. <i>Ci fil, Ci floe</i>	Night <i>Fair</i>	
		<i>Ci Pol. Pt. cldy</i>		

CLT





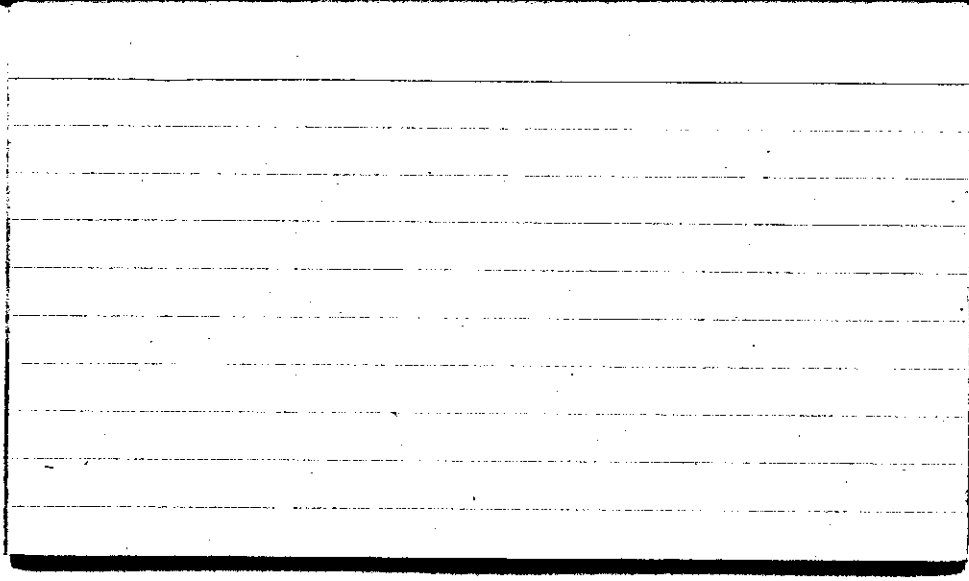
CCT

STATE COLLEGE, Pa. Date

JUN 13 1943

Time  
8700

Max. 82	Wind F calm	Barom. t 79	General Obs. 0655 R	1415 T
Min. 65	Vis. km. 9	28.91	0715 - 0730 10/°	ci fe ci fern
Dry 71	Clouds 9	p(red.) 28.78	0947 - 1000 +5°	
Wet 68	cc Acc cb		1000 - 1005 0°	
R.H. 86	Cu	Morn. cldy	Foren. cldy	
Precip. — mm/ — in.		Noon cldy	Aftern. cldy R	
Snowfall/-Depth in/ in.		Eve. pty cdy	Night clear	



STATE COLLEGE, Pa. Date

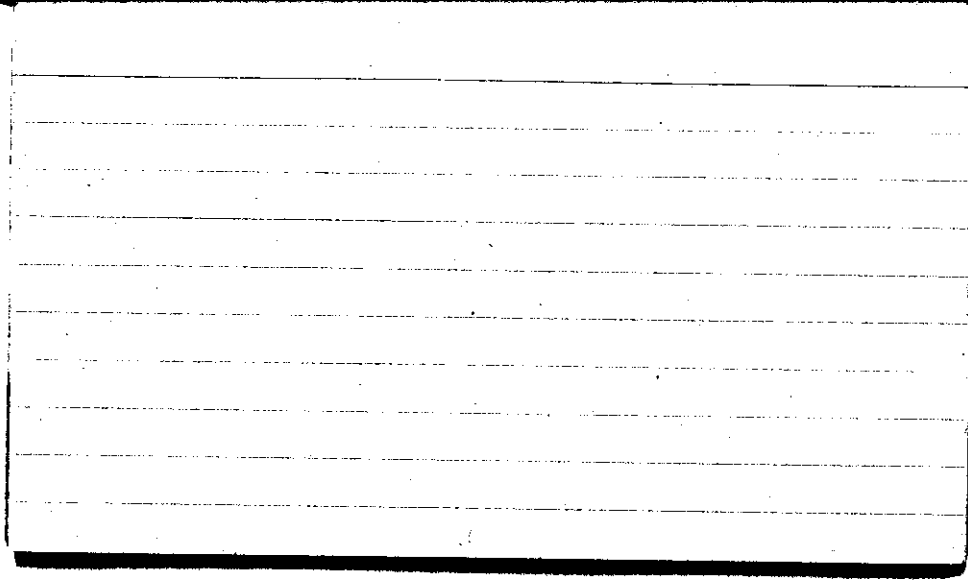
JUN 14 1943

Time

0700

Max. 88	Wind F NNE 2	Barom. t 82	General Obs. ∞	<i>ci fil</i>
Min. 62	Vis. km. 6	29.09		<i>ci fog</i>
Dry 66	Clouds 1	p(red.) 28.95		<i>ci pra</i>
Wet 63	As			
R.H. 85		Morn. Fair	Foren. Clear	
Precip. 0.2 mm / .01 in.		Noon Clear	Aftern. Fair	
Snowfall/-Depth in/ in.		Eve. Fair	Night Fair	

667

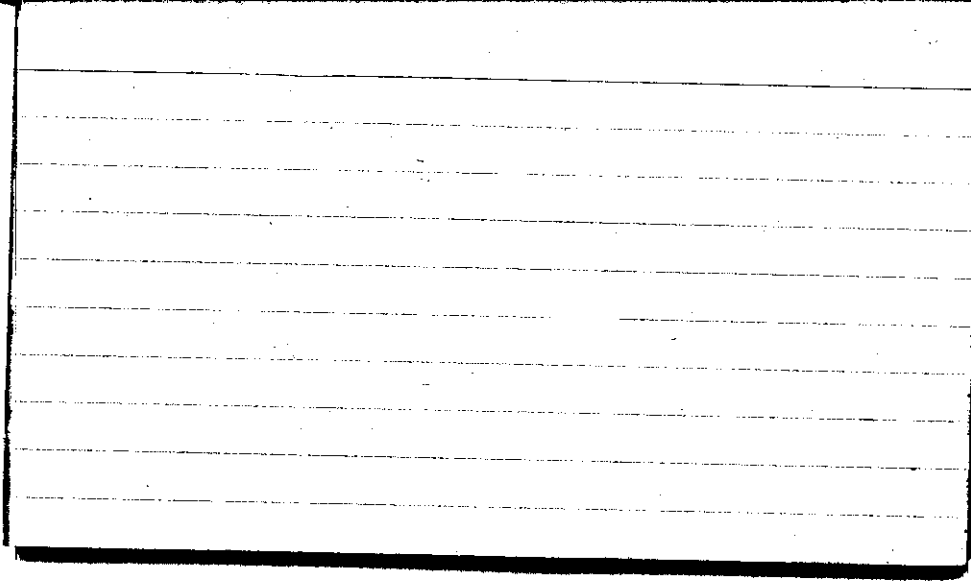


STATE COLLEGE, Pa. Date

JUN 15 1943

Time  
0700

Max. 88	Wind F. SW 1	Barom. t 83	General Obs.	
Min. 66	Vis. km. 7	28.96	00640-0650 1810	0250 1815
Dry 73	Clouds 4 Ci congest.	p(red.) 28.82	1120-181 T	1523 -1400 T
Wet	ci fil cc cs cb Ac			
R.H. 83		Morn. Pt. cldy	Foren. Pt. cldy	
Precip. T mm/ T in.		Noon Pt. cldy T	Aftern. Pt. cldy	
Snowfall/Depth in/ in.		Eve. Pt. cldy	Night cldy	

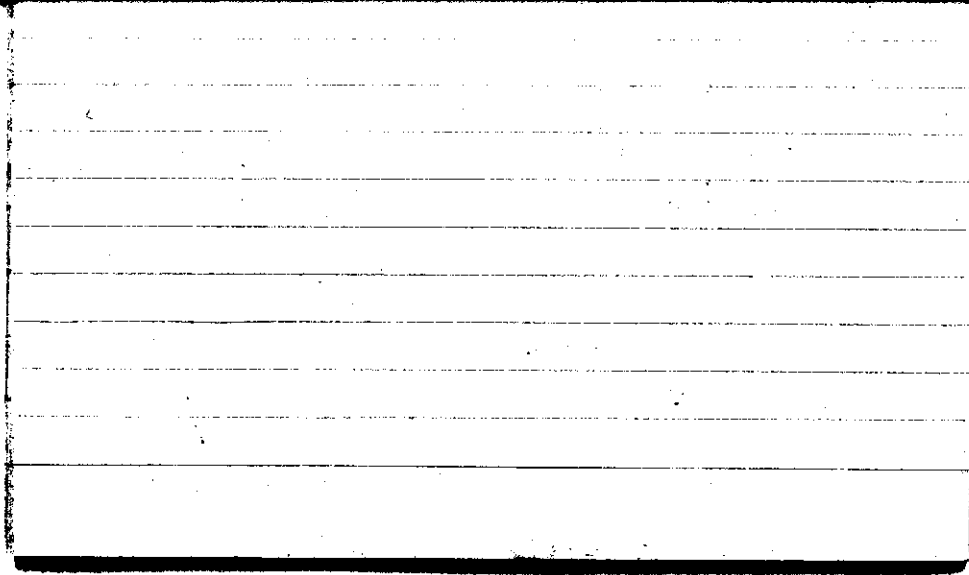


STATE COLLEGE, Pa. Date

JUN 16 1943

Time  
5700

Max. 87	Wind F NW 1	Barom. t 83	General Obs. 2100-2200 101° R		Ci Pol
Min. 71	Vis. km. 15	28.80	2200-2210 0°		Ci floc
Dry 71	Clouds 7	p (red.) 28.66	2355-2400 R		
Wet 67	Sc, St, Fc				
R.H. 82		Morn. cldy	Foren. cldy		
Precip. mm/ T in.		Noon Pt. cldy	Aftern. Pt. cldy		
Snowfall/ -Depth in/ in.		Eve. Fair	Night cldy R		
CLT					

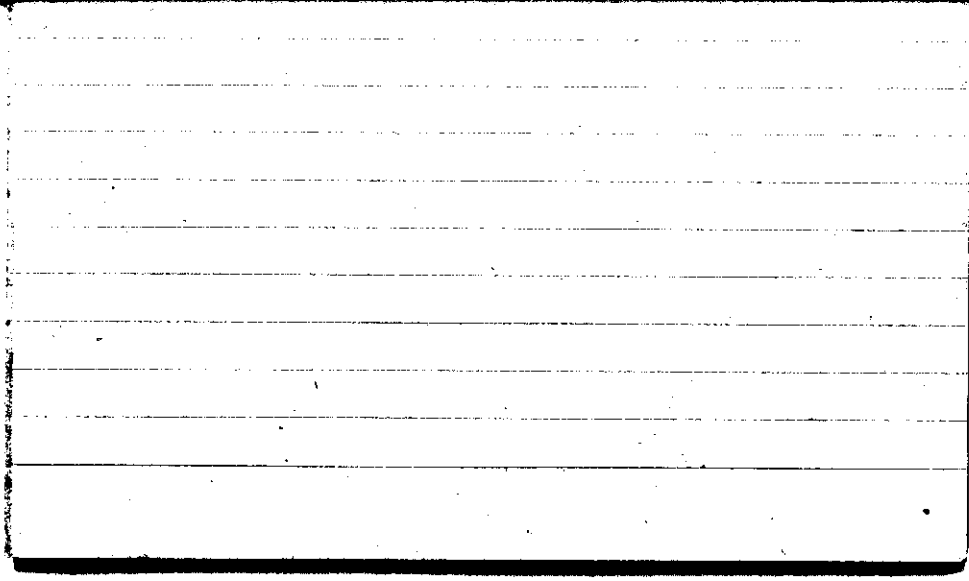




STATE COLLEGE, Pa. Date JUN 17 1943

Time 0700

Max. 87	Wind F Calm	Barom. t 86	General Obs. ∞	ci
Min. 66	Vis. km. 8	P 28.82	0000 - 0130 R 1435 - 1445 S	cs cc a'cn
Dry 70	Clouds 5 a, Cs	P(red.) 28.67	1630 - 2100 S <sup>14</sup>	
Wet 69 <sup>72</sup>	Ac, Cu Con As			
R.H. 86	Acc	MORN. Pt. cldy As Cast	Foren. cldy	
Precip. 4.0 mm / 0.16 in.		Noon cldy	Aftern. cldy R	
Snowfall / -Depth in / in.		Eve. cldy	Night cldy	
CLT				



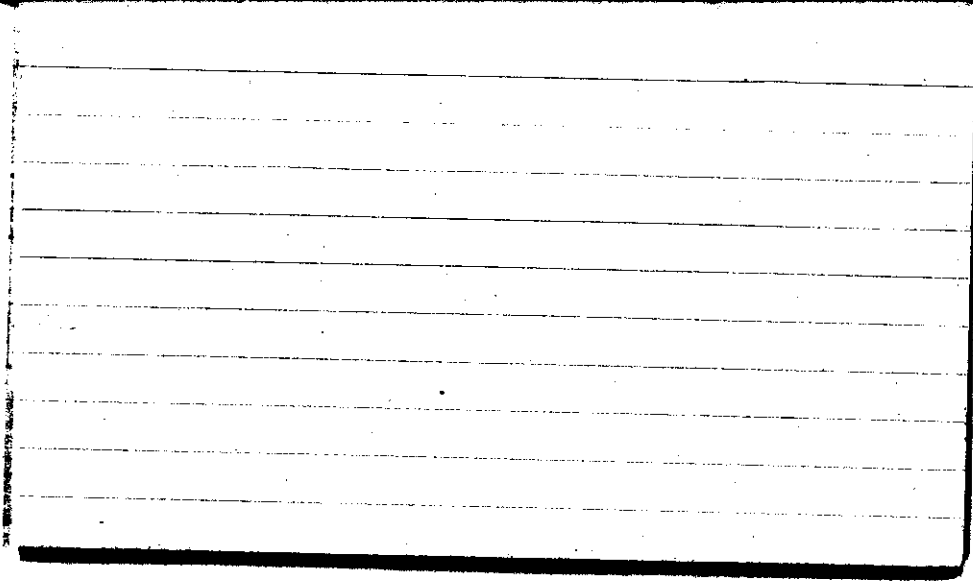
STATE COLLEGE, Pa. Date

JUN 18 1943

Time

0700

Max. 86	Wind F W 4	Barom. t 80	General Obs. ∞	<i>in feet</i> <i>as read</i> <i>ci' nua</i> <i>ci' dem</i>
Min. 62	Vis. km. 4	P 28.86		
Dry 65	Clouds 7	p(red.) 28.73		
Wet 64	at Cu, Fe, St Ac			
R.H. 88		Morn. Pt. cldy	Foren. Pt. cldy	
Precip. 2.6 mm/0.10 in.		Noon Pt. cldy	Aftern. Pt. cldy	
Snowfall/-Depth — in/ — in.		Eve. Fair	Night clear	
CLT				



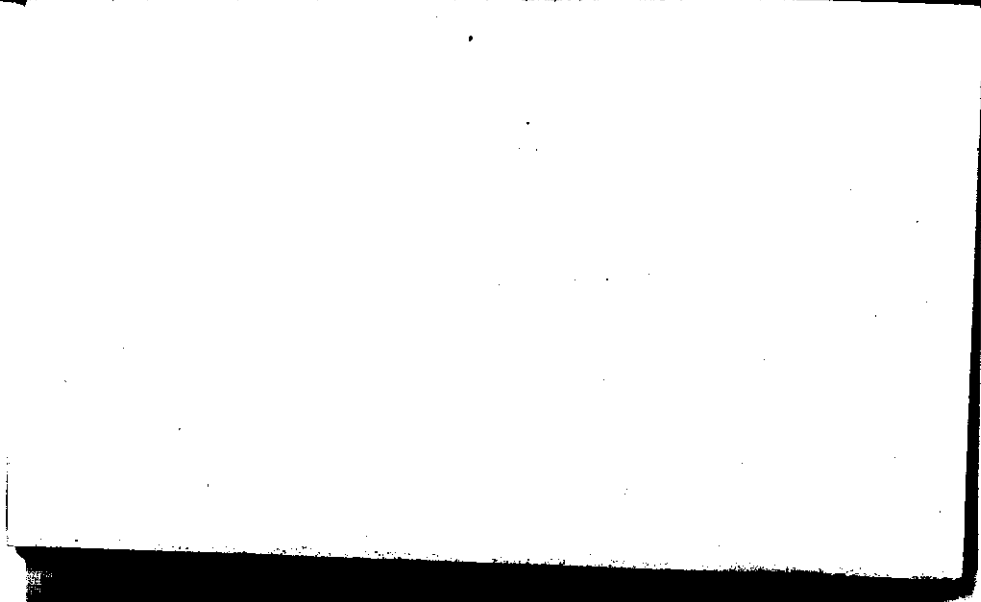
STATE COLLEGE, Pa. Date

JUN 19 1943

Time  
0700

Max. 80	Wind F W 2	Barom. t 78	General Obs. ☉	C. F. J.
Min. 60	Vis. km. 5	28.98		
Dry 67	Clouds clear	p (red.) 28.85		
Wet 63 <sup>70</sup>				
R.H. 68		Morn. clear	Foren. Fair	
Precip. - mm/- in.		Noon Fair	Aftern. Fair	
Snowfall/-Depth in/ in.		Eve. Fair	Night Fair	

CLT

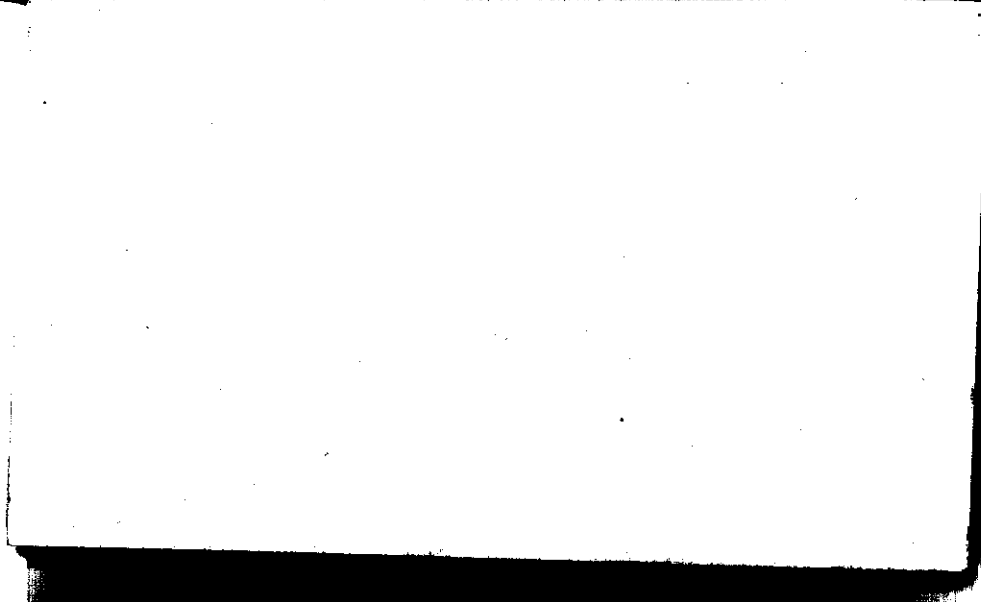


CLT  
STATE COLLEGE, Pa. Date

JUN 20 1943

Time  
0700

Max.	Wind F	Barom.	General Obs.
87	calm	t 82	
Min.	Vis. km.	p	
64	5	28.96	
Dry	Clouds	p (red.)	
69	2	28.82	
Wet	→ c/fil		
69			
R.H.		Morn.	Foren.
69		Fair	Pt. Cldy
Precip.		Noon	Aftern.
mm/ in.		Pt. Cldy	Fair
Snowfall/-Depth		Eve.	Night
in/ in.		Fair	Fair → Clear



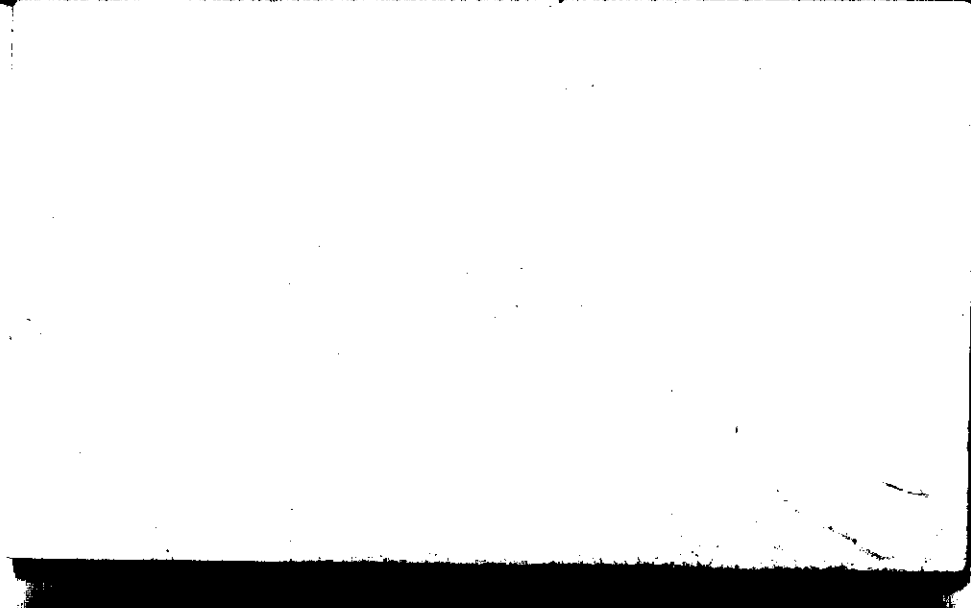


STATE COLLEGE, Pa. Date

JUN 21 1943

Time  
0700

Max. 87	Wind F Calm	Barom. t 85	General Obs. ∞
Min. 63	Vis. km. 8	P 28.79	R, 2040 - 2100.
Dry 68	Clouds Cifil	p (red.) 28.84	
Wet 65	1		
R.H. 85		Morn. Fair	Foren. Fair → Pthly. Cldg.
Precip. — mm / — in		Noon cc, cloud. Pthly Cldg	Aftern. cc Pthly Cldg
Snowfall / -Depth — in / — in		Eve. Pthly Cldg → 1/2	Night Fair
A.B.			



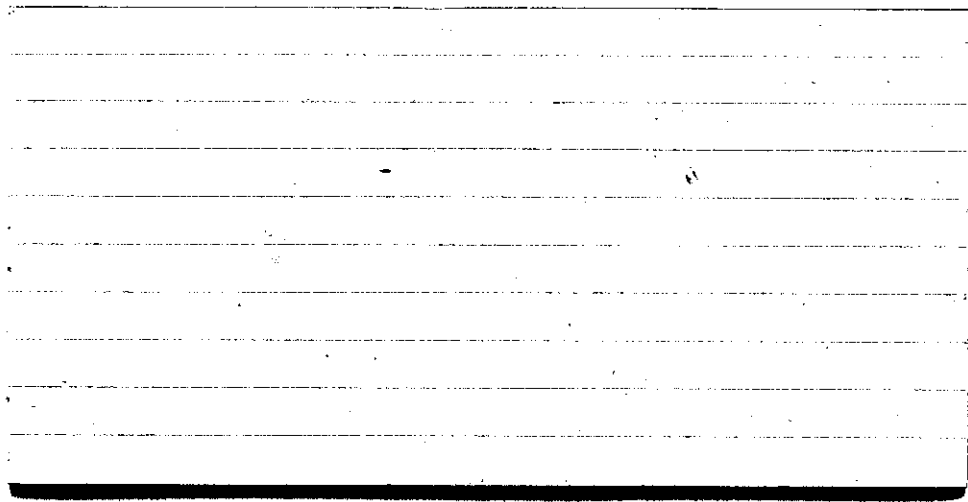
STATE COLLEGE, Pa. Date

JUN 22 1943

Time

0700

Max. 90	Wind F W 1	Barom. t 86	General Obs. ∞
Min. 66	Vis. km. 7	28.94	
Dry 69.5	Clouds c fil	p (red.) 28.79	
Wet 66	< 1		
R.H. 81		Morn. Fair → Clear	Even. Clear → Fair
Precip. — mm/ — in		Noon Fair	Aftern. cs Fair
Snowfall/-Depth — in/ — in		Even. 1/4 cc, c fil, c flocc	Night Fair
H.B.		Fair c une. c dens	



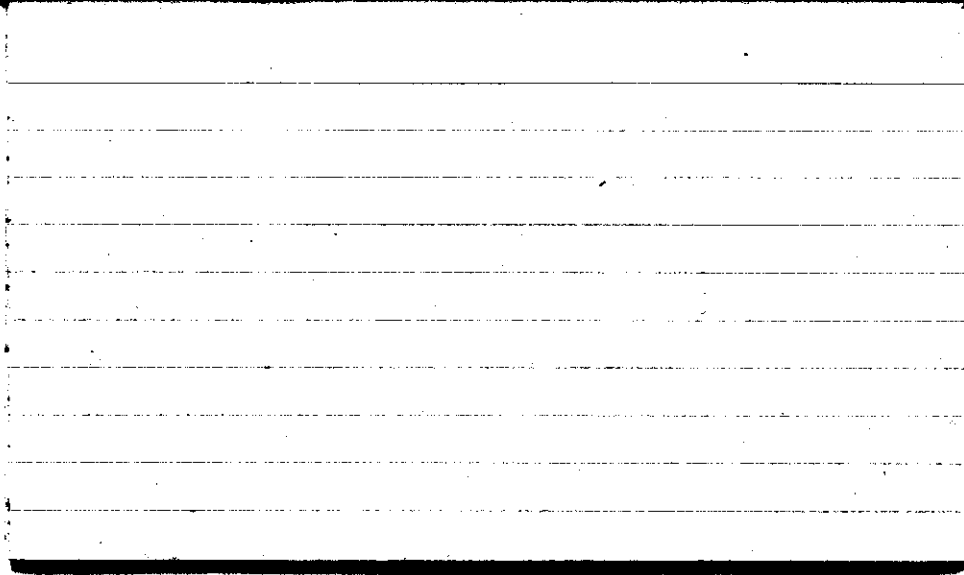
STATE COLLEGE, Pa. Date

JUN 23 1943

Time  
0700

Max. 91	Wind F NNW	Barom. t 86	General Obs. 0'	
Min. 60	Vis. km. 25	p 29.01		
Dry 67	Clouds c. fil, c. fluc	p (red.) 28.86		
Wet 61.5	1			
R.H. 73		Morn. Fair → clear	Foren. fair to pty cl	
Precip. — mm / — in.		Noon pty cl	Aftern. fair	
Snowfall / -Depth — in / — in.		Eve. pty cl	Night clear	

19-B.

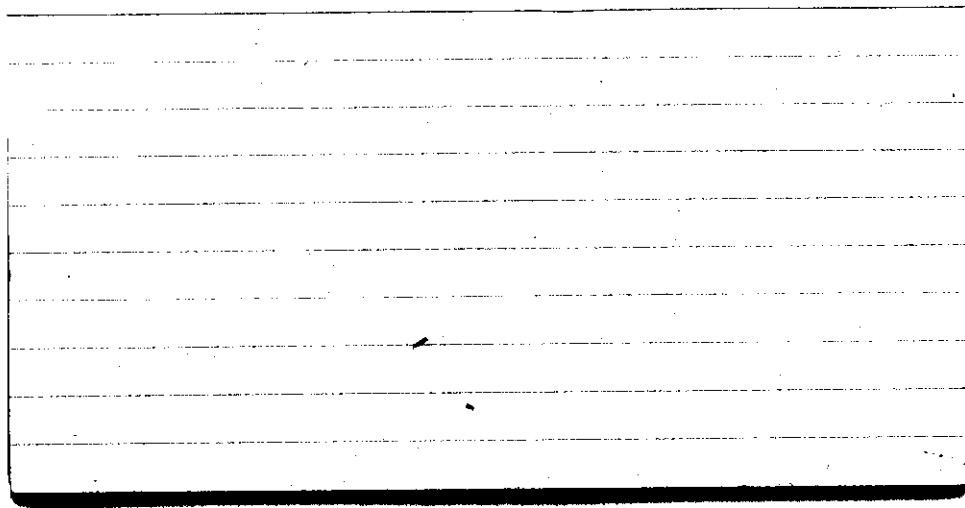


STATE COLLEGE, Pa. Date

JUN 24 1943

Time  
0700

Max. 89	Wind F N 1	Barom. t 76	General Obs. 0815   0:   —
Min. 62	Vis. km. 20	29.06	1700
Dry 66	Clouds cs, c fil, Ci dens, c fl	p (red.) 28.94	
Wet 62	c unc.		
R.H. 80	3	Morn. Fair → Pth. cld	Foren. c dens, c fl Pth. cld
Precip. — mm / — in		Noon Pth. cld	Aftern. c fil, c fl, c loc, c c Pth. cld
Snowfall / -Depth — in / — in		Eve. c unc, c dens, c fl, c prae Pth. cld, c fil	Night Pth. cld → Fair



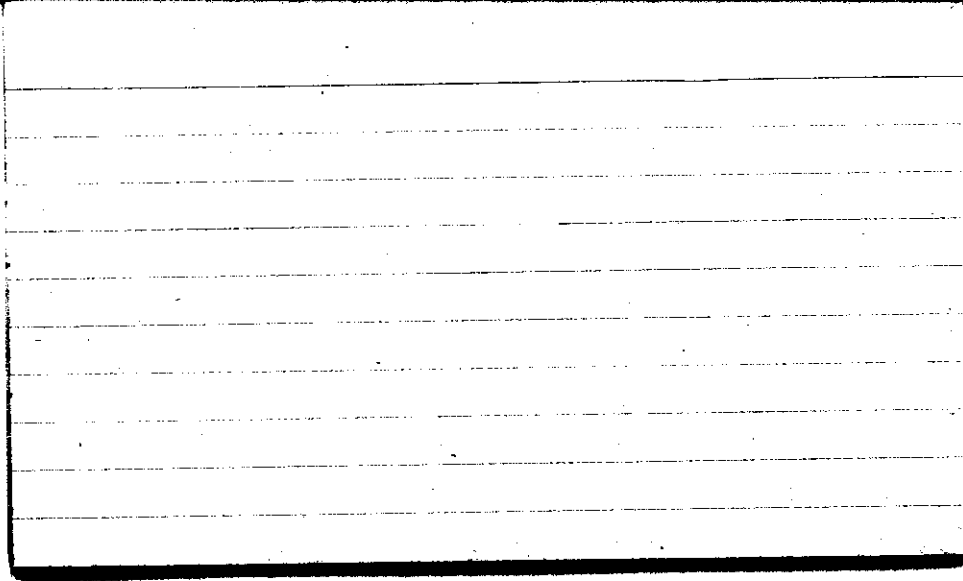


STATE COLLEGE, Pa. Date

JUN 25 1943

Time  
0700

Max. 91	Wind F SW 2	Barom. t 84	General Obs. 0° ∞
Min. 65	Vis. km. 10	r 29.07	
Dry 74	Clouds C/floc	p (red.) 28.92	
Wet 69	< 1		
R.H. 78		Morn. Fair → Clear	Foren. Clear
Precip. mm/ in.		Noon Clear → Fair	Aftern. Fair
Snowfall/-Depth in/ in.		Eve. Fair	Night Fair
H.B.			

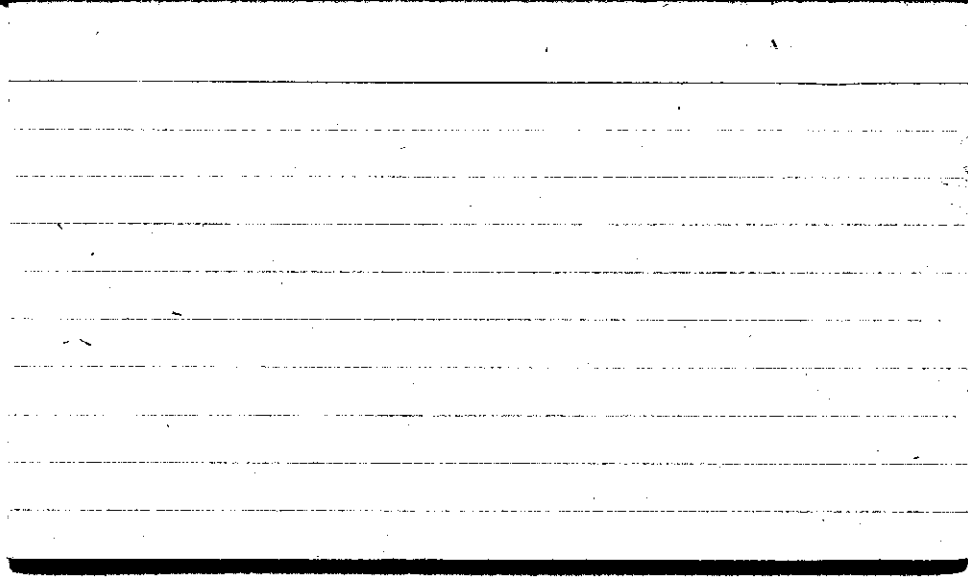


STATE COLLEGE, Pa. Date JUN 26 1943

Time

0700

Max. 93	Wind F W < 1	Barom. t 84	General Obs. 0° ∞
Min. 70	Vis. km. 12	29.01	1415-1420 $\frac{0}{\nabla}$ R cixnot
Dry 74	Clouds 2	29.86	as neb
Wet 76.2 70.8	Ci fil, ci unc.		ci den ci pra.
R.H. 76		Morn. Fair	Foren. Fair Cb
Precip. — mm/ — in.		Noon Fair → Ptly cldy	Aftern. cldy R
Snowfall/-Depth — in/ — in.		Eve. Ovc. Cs	Night Ovc. Cs



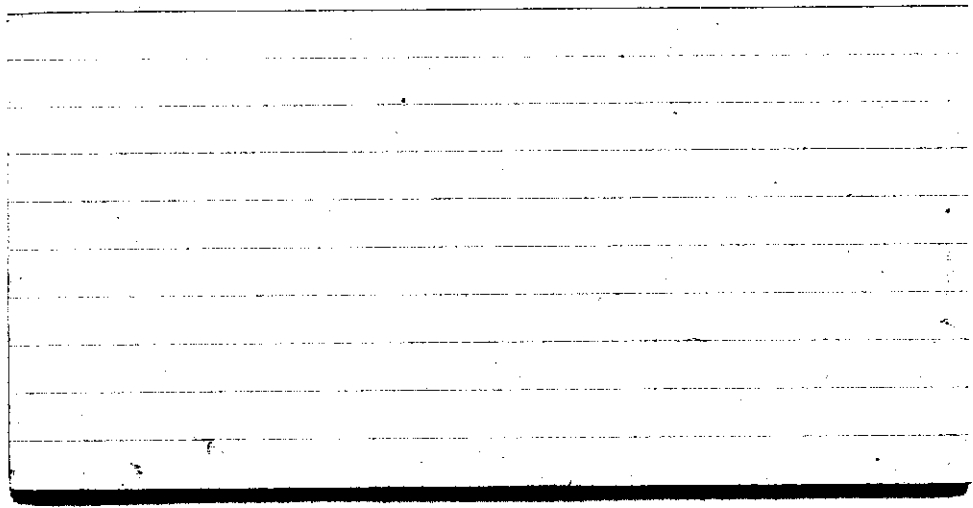
STATE COLLEGE, Pa. Date

JUN 27 1943

Time

0700

Max. 92	Wind F SW 2	Barom. t 85	General Obs. ∞	
Min. 72	Vis. km. 10	28.92	R 1400	ci not.
Dry 75	Clouds 5	p (red.) 28.77	R 1900	
Wet 78.0	Cs, Cc,			
73.8	ci, fl,			
R.H. 78	ci, fil.	Morn. pty cldy	Foren. pty cldy → cldy	
Precip. T mm / T in.		Noon cldy	Aftern. cldy → pty cldy	
Snowfall / -Depth — in / — in.		Eve. pty cldy → Fair	Night Fair	
A.M.				



STATE COLLEGE, Pa. Date

JUN 28 1943

Time  
0700

Max. 92	Wind F SW 1	Barom. t 89	General Obs. ∞	
Min. 73	Vis. km. 13	28.78	1430 T	Ci not.
Dry 76	Clouds 6	28.62	1830 R ↓ - 2000	ci' den
Wet 76.7	Ac, Cs,		2150-2400 + ●°	ci' fove
21.8	Ci' fil.		1800 ● - 1525	
R.H. 80		Morn. pty cldy	Foren. pty cldy → cldy	
Precip. — mm / — in.		Noon pty cldy	Aftern. showers cldy ↗	
Snowfall / -Depth — in / — in.		Eve. ovc	Night ovc. rain	
A.M.				



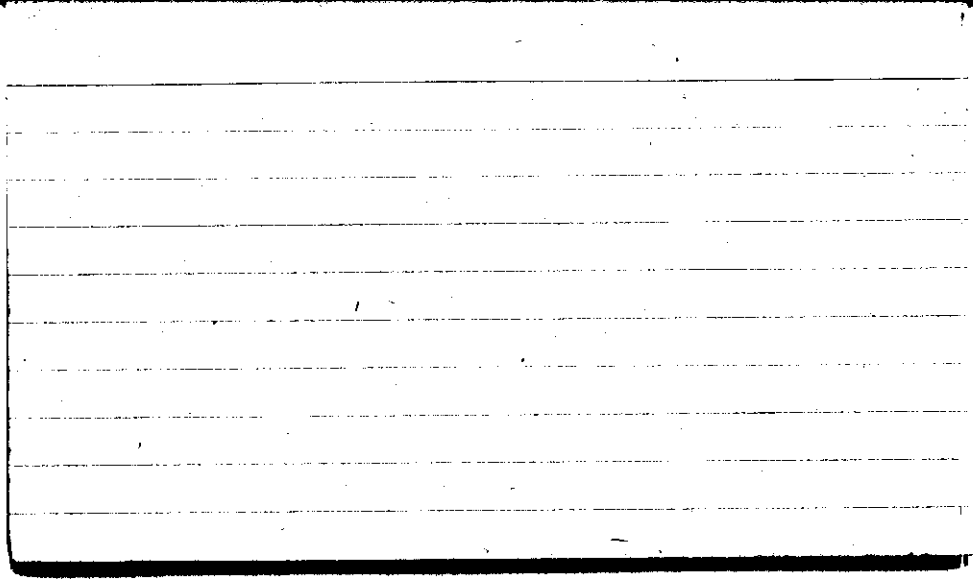


STATE COLLEGE, Pa. Date

JUN 29 1943

Time  
0700

Max. 93	Wind F WSW 3	Barom. t 82	General Obs.
Min. 69	Vis. km. 7	28.68	0400 - 0610 $\bar{v}$ <sup>0-1</sup> 0740 - 1100 101°
Dry 70	Clouds ST, FS, AS	o (red.) 28.54	
Wet 69	10		
R.H. 95		Morn. Overst. rain	Foren. Ovc → cly
Precip. 8.3 mm / .33 in.		Noon cly → Pth cly	Aftern. a dens, cly, cumc Pth cly
Snowfall / -Depth — in / — in.		Eve. Pth cly → rain	Night rain
A. B.			



STATE COLLEGE, Pa. Date

JUN 30 1943

Time  
0700

Max. 79	Wind F NW 3	Barom. t 71	General Obs. - ci fern
Min. 49	Vis. km. 30 <sup>+</sup>	r 28.97	
Dry 51	Clouds cu, ac/ent	p (red.) 28.86	
Wet 45	2		
R.H. 62		Morn. Fair → P/H, c → cldy	Foren. <del>P/H</del> cldy.
Precip. 0.4 mm / .02 in		Noon cldy → ovc.	Aftern. ovc - cldy
Snowfall/-Depth — in / — in		Eve. cldy → P/H, cldy → Fair	Night Fair → clear
A.P.			

