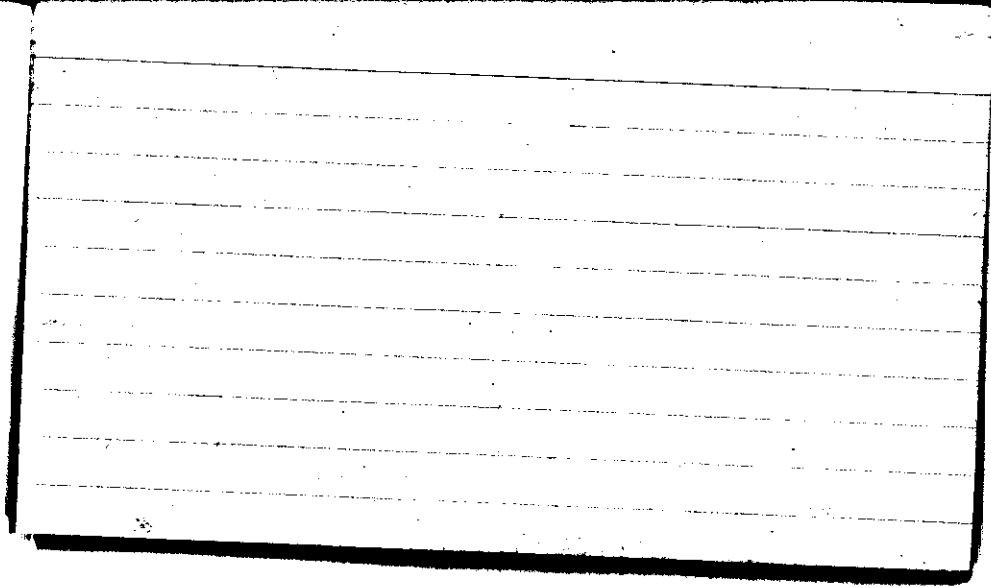


STATE COLLEGE, Pa. Date

NOV 1 - 1943

Time  
0700

Max. 54	Wind F calm	Barom. t 71	General Obs. 1253 ↓ 1340 ↕	
Min. 31	Vis. km. 24	p 29.12	1925 - 1945 9°	
Dry 43	Clouds 4	p(red.) 29.01	2015 - 2130 9°	
Wet 39	Ac, Ci, Fe Ci Cong Acc			
R.H. 68		Morn. pt. clly	Acc	Foren. Fair
Precip. - mm/ - in		Noon Fair		Aftern. Clear
Snowfall/-Depth - in/ - in		Eve. Fair		Night Fair
267				

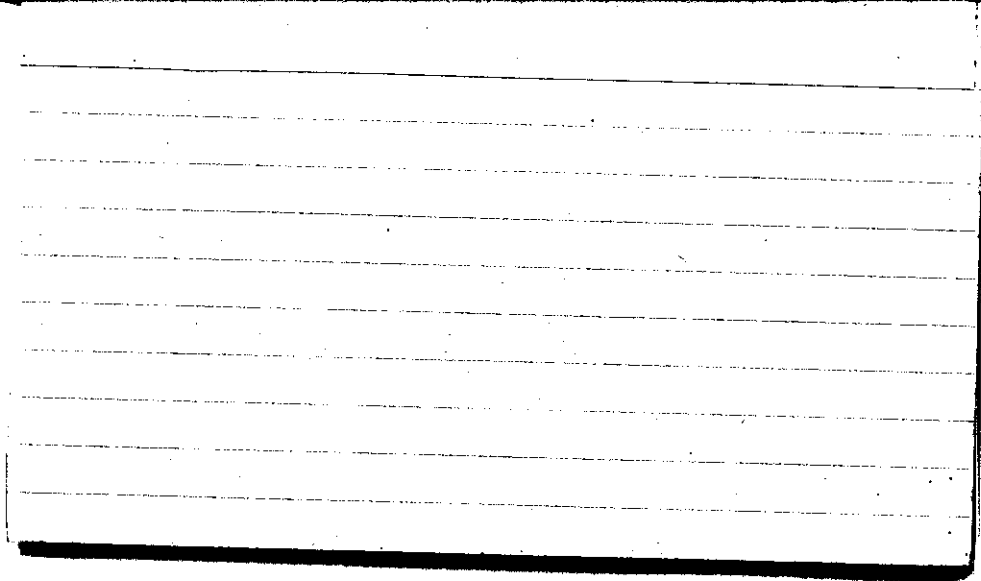


STATE COLLEGE, Pa. Date **NOV - 2 1943**

Time  
0700

Max. 60	Wind F SW 1	Barom. t 69	General Obs. 0730-0830 ☉
Min. 43	Vis. km. 15	P 28.91	0835-0910 ☉ R
Dry 52	Clouds 8	p (red.) 28.80	0910-1300 ☽
Wet 48	Acc. Acc.		1300-1530 ☽
R.H. 75		Morn. cldy Acc	Foren. cldy
Precip. T mm / T in.		Noon cldy	Aftern. cldy
Snowfall/-Depth in / in.		Eve. cldy	Night cldy

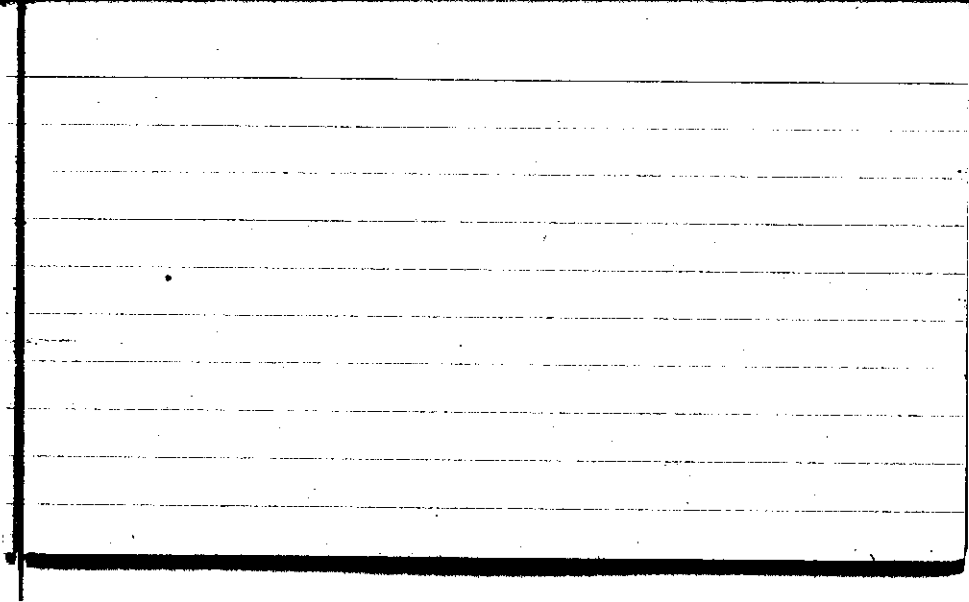
667



STATE COLLEGE, Pa. Date NOV - 3 1943

Time  
0700

Max. 54	Wind F W 3	Barom. t 70	General Obs. 1230-1400 9 <sup>00</sup>	
Min. 40	Vis. km. 20	28.84	1850-1905 9 <sup>00</sup>	
Dry 41	Clouds F	P(red.) 28.73		
Wet 38	As, Ac Cu, Fc			
R.H. 77	Acc	Morn. <i>cldy</i> <sup>Acc in</sup> <i>W/B</i>	Foren. <i>cldy</i>	
Precip. 7.6 mm/0.27 in.		Noon <i>ovc</i>	Aftern. <i>pt cldy</i>	
Snowfall/-Depth in/ in.		Eve. <i>pt. cldy</i>	Night <i>Fair</i>	



STATE COLLEGE, Pa. Date

NOV - 4 1943

Time

0700

Max. 42	Wind F SW 2	Barom. t 66	General Obs.	
Min. 35	Vis. km. 15	p 28.93	0130-0300 9°	
Dry 37	Clouds 7	p(red.) 28.83		
Wet 36	CC, CS AC, SG, FS			
R.H. 91		Morn. pt. cldy	Foren. pt. cldy	
Precip. 0.5 mm/0.03 in.		Noon pt. cldy	Aftern. pt. cldy	
Snowfall/-Depth in/ in.		Eve. cldy	Night Fair	





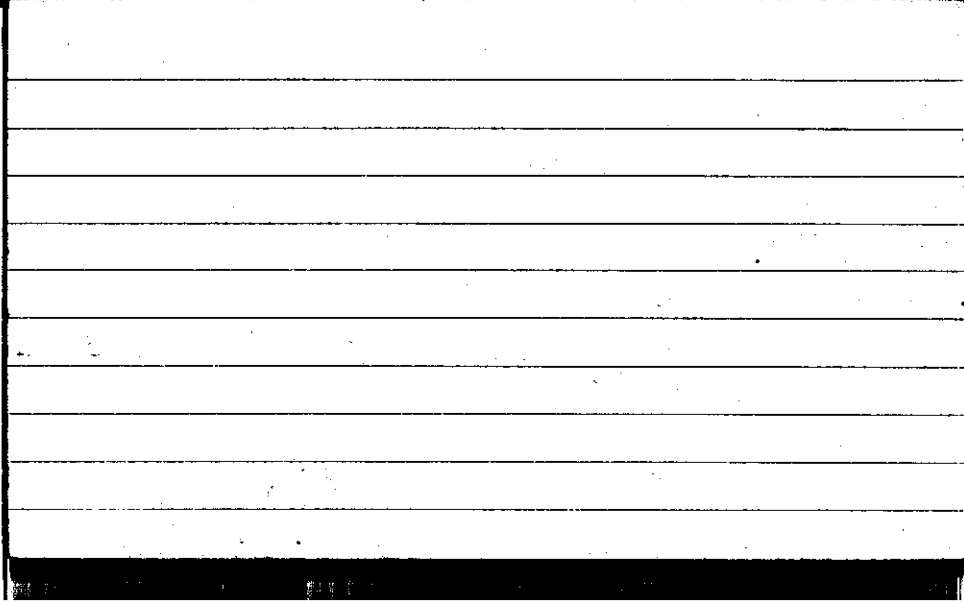
STATE COLLEGE, Pa. Date

NOV - 5 1943

Time

0700

Max. 45	Wind F calm	Barom. t 66	General Obs. ∞ [ ] 0800 (a) - 1030 =	
Min. 28	Vis. km. 10	p 28.84	1715 - 2130 °	
Dry 29	Clouds 6 Cc, Ci, unc	p (red.) 28.74		
Wet 28	As Accum w' pt as made			
R.H. 89		Morn. Pt. cldy	Foren. Pt cldy	
Precip. — mm/ — in.		Noon Fair	Aftern. Pt cldy - cldy	
Snowfall/ - Depth — in/ — in.		Eve. cldy	Night cldy	

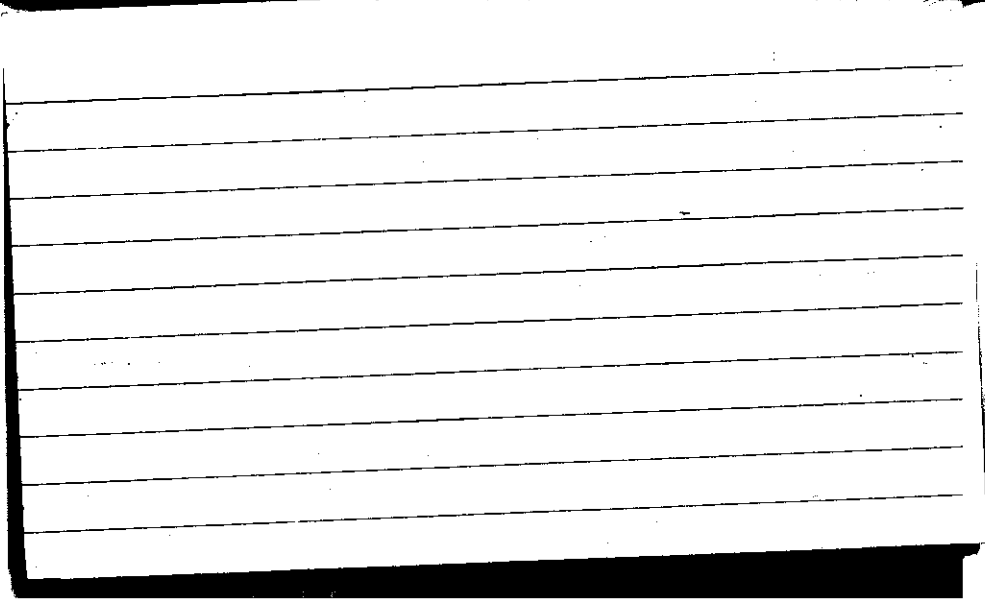


STATE COLLEGE, Pa. Date

NOV - 6 1943

Time  
0700

Max. 47	Wind F W 2	Barom. t 67	General Obs. 1600 ☉ - 1650 1930 ☉ - 2000 • † 1550-1600 ☉ neb. in floor	
Min. 28	Vis. km. 4	p 28.88		
Dry 35	Clouds 2	p(red.) 28.78		
Wet 33	cc, cs, ci, po, cum			
R.H. 82		Morn. Fair	Foren. Fair	
Precip. o. mm/0.01 in.		Noon Fair	Aftern. Clear	
Snowfall/Depth in/ in.		Eve. Fair	Night Fair	

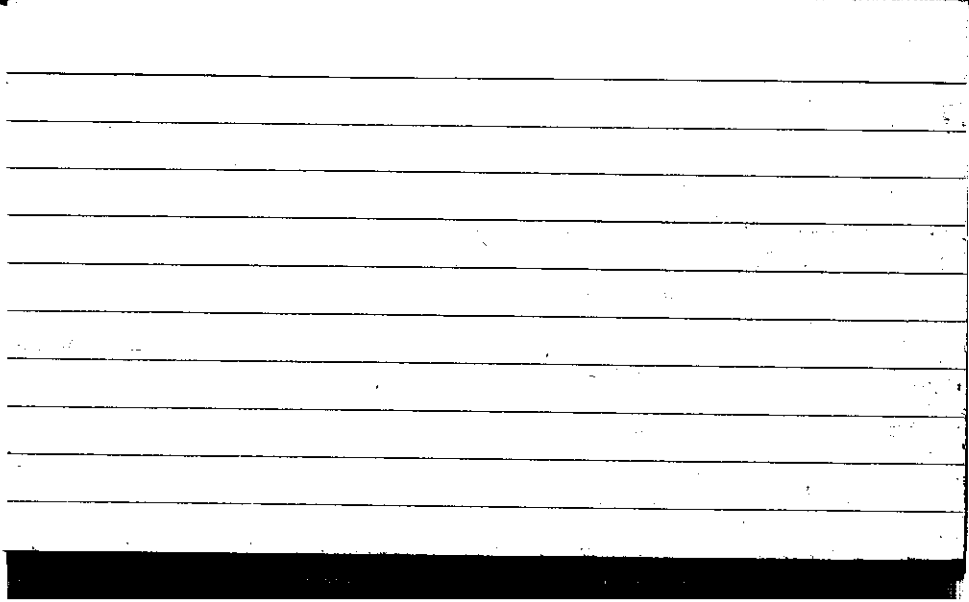


STATE COLLEGE, Pa. Date NOV - 7 1943

Time 0700

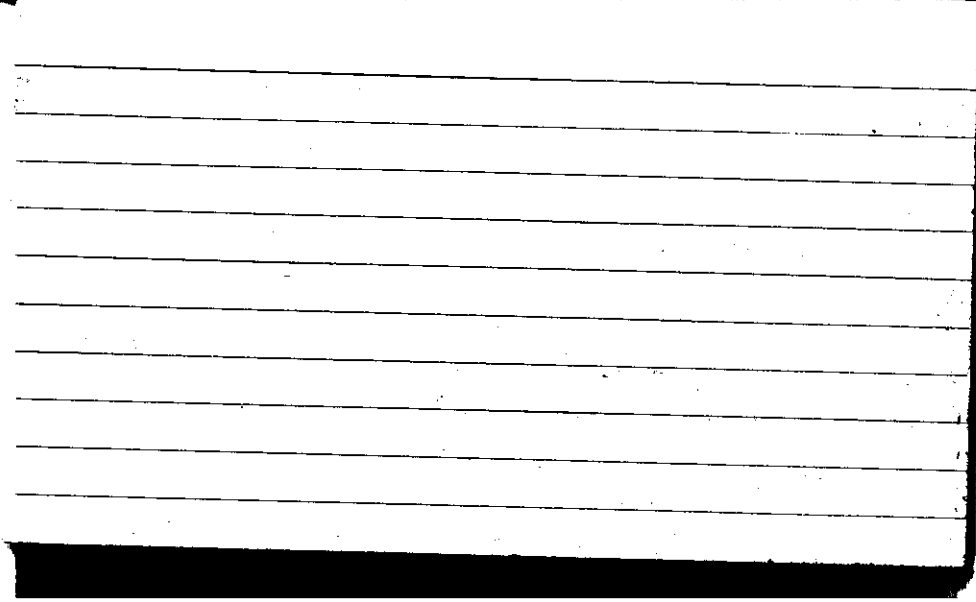
Max. 55	Wind F 53	Barom. t 70	General Obs. ☉ 1430-1500
Min. 34	Vis. km. 15	p 29.07	
Dry 47	Clouds 2 Cc, Cs, Nt	p(red.) 28.96	10' 2155 - 2300 2' 2300 - 2400 +
Wet 42	Cs, As		
R.H. 66		Morn. fair	Foren. fair
Precip. - mm/ - in.		Noon pty clgy	Aftern. pty clgy
Snowfall/Depth - in/ - in.		Eve. clgy	Night eve rain shower

CLT



STATE COLLEGE, Pa. Date **NOV - 8 1943**Time  
0700

Max. 61	Wind F SSE 3	Barom. t 72	General Obs. 0' 0000 - 2330	Spr, 1200 0.15, 62 HN
Min. 45	Vis. km. 8	p 28.80		Spr 1800 1.10 62 HN
Dry 58	Clouds 10	p(red.) 28.69		
Wet 57	Fs Cb			
R.H. 94	Ns	Morn. Rain-shower	Foren. shower	
Precip. 11.5 mm / 0.45 in.		Noon shower	Aftern. shower	
Snowfall/-Depth — in / — in		Eve. shower dr	Night clearing	





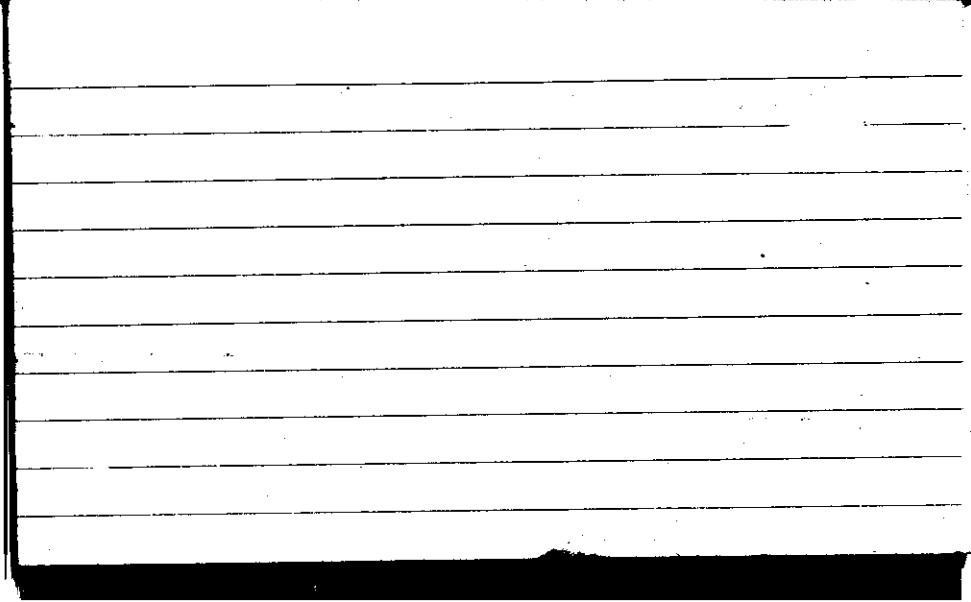
STATE COLLEGE, Pa. Date

NOV - 9 1943

Time

0700

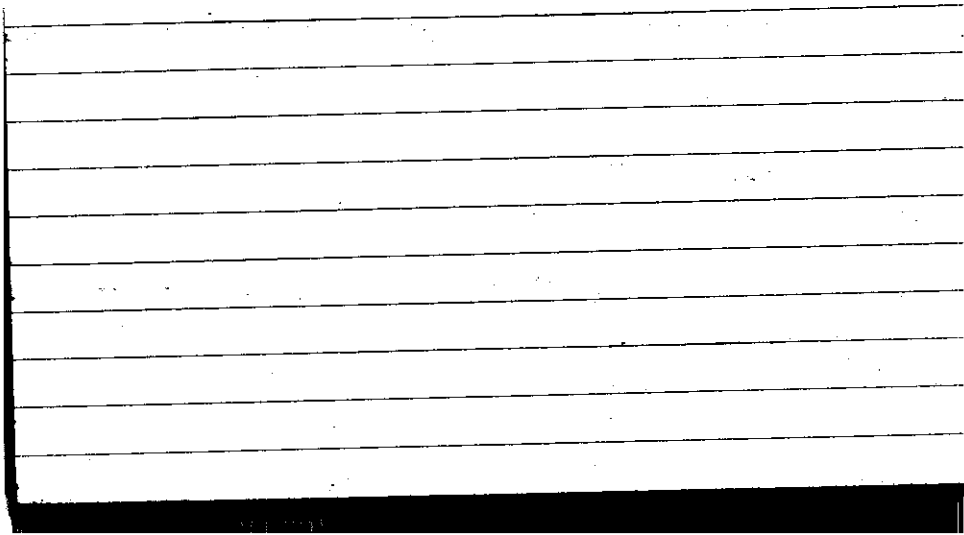
Max. 65	Wind F W 2	Barom. t 70	General Obs.   9°   29° 0930-1340 <span style="border: 1px solid black; padding: 2px;">SP 1200 CLF</span>	
Min. 37	Vis. km. 10	p 28.64	149 1550-1615	
Dry 37	Clouds 9	p (red.) 28.53		
Wet 36	Sc Ac			
R.H. 90		Morn.	cldy	Foren. over showers
Precip. 32.9 mm / 1.37 in.		Noon	cldy	Aftern. over showers
Snowfall / -Depth - in / - in.		Eve.		Night



STATE COLLEGE, Pa. Date NOV 10 1943

Time  
0700

Max. 40	Wind F SW 4	Barom. t 65	General Obs.	
Min. 33	Vis. km. 20	p 28.92	0710-2400 * <sup>o</sup> +	
Dry 35	Clouds 10	p(red.) 28.82		
Wet 32	Sc, Fc, Ac			
R.H. 82		Morn. cldy	Foren. cldy	
Precip. T mm / T in.		Noon cldy	Aftern. cldy	
Snowfall/-Depth T in / 0 in.		Eve. cldy	Night snow	



STATE COLLEGE, Pa. Date

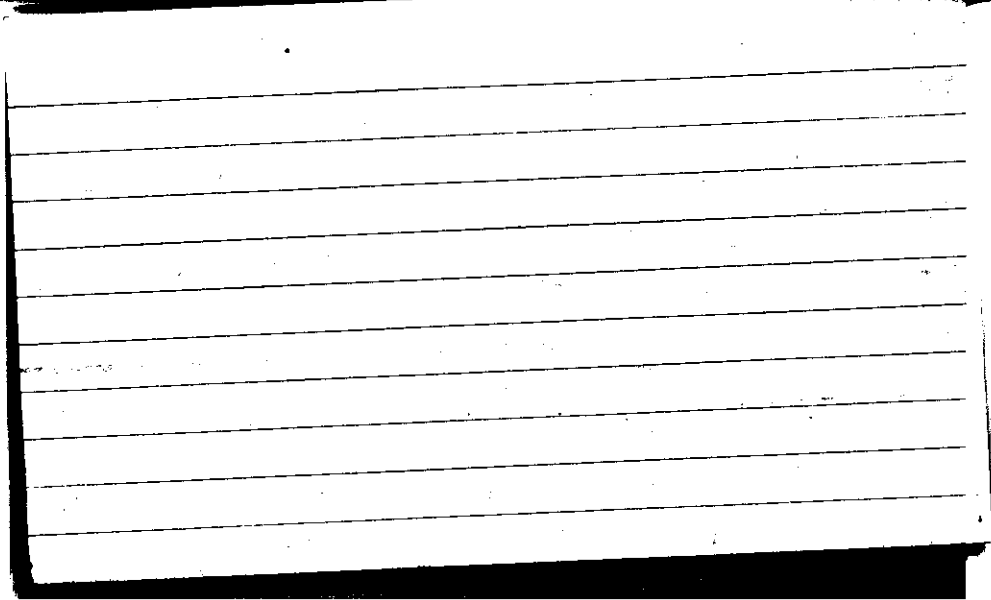
NOV 1 1943

Time

0700

Max. 39	Wind F W 1	Barom. t 64	General Obs. <input checked="" type="checkbox"/>
Min. 29	Vis. km. 4	p 28.93	0000 *° - 07 45
Dry 30	Clouds 10	p (red.) 28.84	0820 *° - 08 40
Wet 30	NS		1430 *° - 14 50
R.H. 100		Morn. SNW	Foren. cldy
Precip. 0.6 mm/0.03 in		Noon cldy	Aftern. cldy
Snowfall/-Depth 0.5 in/ 0.5 in		Eve. cldy	Night cldy

627



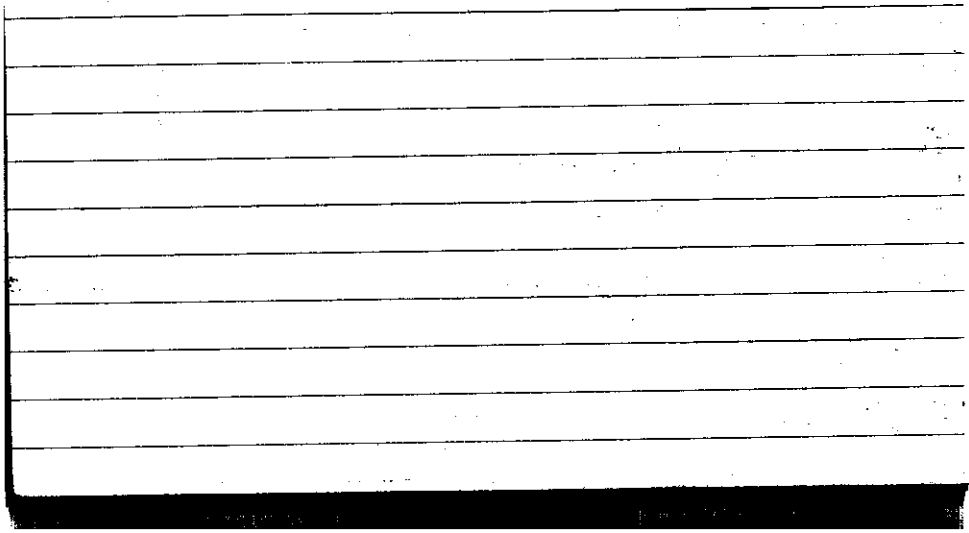
STATE COLLEGE, Pa. Date

NOV 12 1943

Time

0700

Max. 36	Wind F SW 2	Barom. t 63	General Obs. 00 L <sup>o</sup> 1520 <sup>o</sup> - 1533 <sup>o</sup> - Circumzenithal arc + left part of arc	
Min. 25	Vis. km. 5	p 29.02	0720-0830 * <sup>o</sup> 1640-1720 * <sup>o</sup> 2015-2400+ * <sup>o</sup>	
Dry 27	Clouds 9	p(red.) 28.93		
Wet	AS, AC	.89		
R.H.		Morn. cldy	Foren. cldy - Pt cldy	
Precip. T mm / T in.		Noon Pt cldy	Aftern. cldy	
Snowfall / -Depth T in / - in.		Eve. cldy	Night cldy	





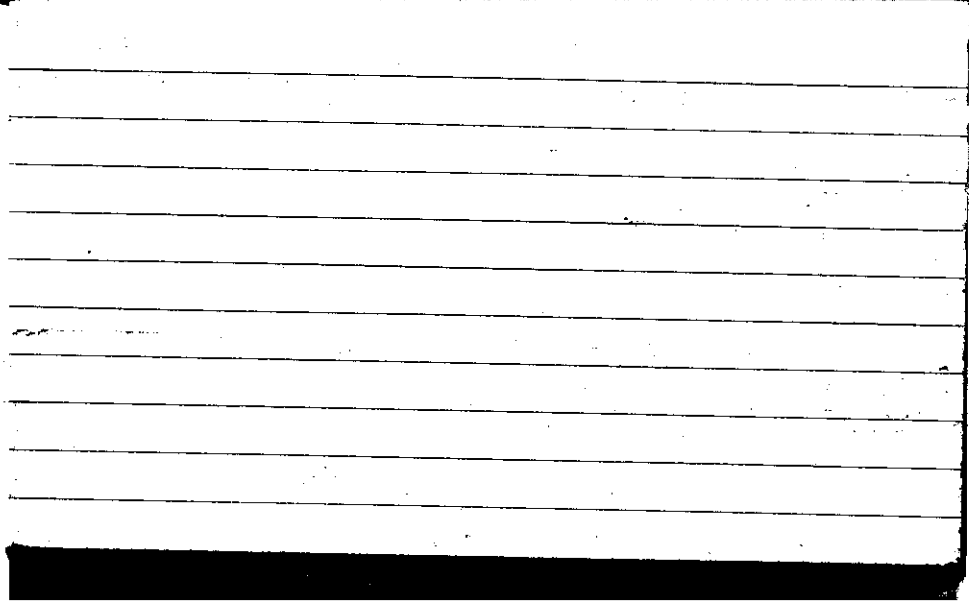
STATE COLLEGE, Pa. Date

NOV 13 1943

Time

6700

Max. 39	Wind F W 4	Barom. t 62	General Obs. * 0000 * - 0140
Min. 27	Vis. km. 20	p 28.63	0140 * - 0210 0219 * 1° - 0715
Dry 35	Clouds 10 Sc, As	p (red.) 28.54	0820 * - 0930 1140 * - 1740
Wet 32			
R.H. 73		Morn. <i>cldy snow</i>	Foren. <i>cldy</i>
Precip. 0.06 mm / 0.03 in.		Noon <i>cldy cb</i>	Aftern. <i>cldy - pt cldy</i>
Snowfall / -Depth 0.2 in / 7 in		Eve. <i>pt cldy cb</i>	Night <i>pt cldy</i>

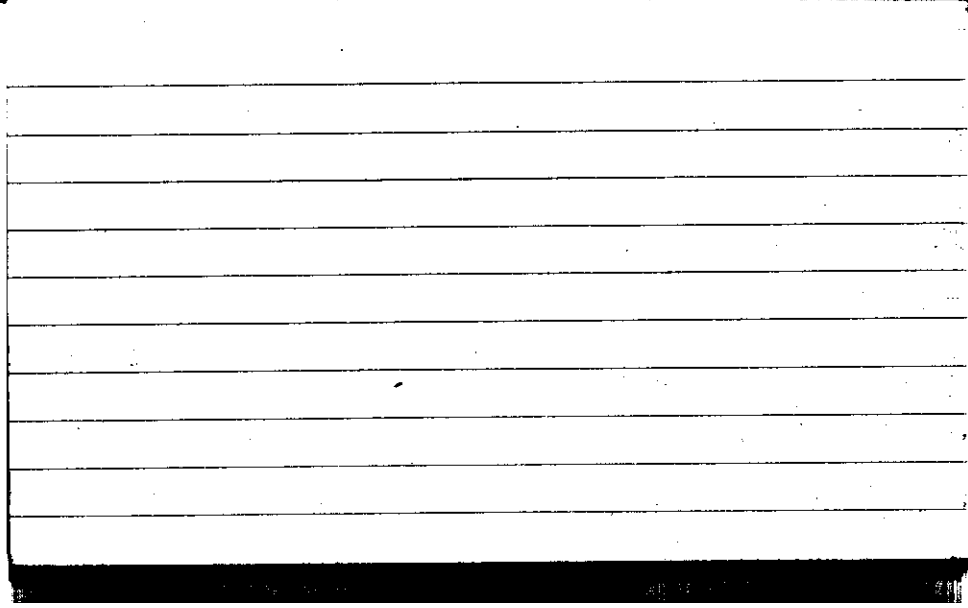


STATE COLLEGE, Pa. Date

NOV 14 1943

Time  
0700

Max. 35	Wind F W 4	Barom. t 62	General Obs. 0705 * <sup>00</sup> - 0730	
Min. 27	Vis. km. 25	P 29.13	0940 * <sup>00</sup> - 0950	
Dry 28	Clouds 8	p(red.) 29.04		
Wet 26	Sc, Cu, Fc			
R.H. 77		Morn. <i>Cldy</i>	Foren. <i>Cldy - Pt cldy</i>	
Precip. T mm / T in.		Noon <i>Pt cldy</i>	Aftern. <i>Fair</i>	
Snowfall/-Depth T in / T in.		Eve. <i>Fair</i>	Night <i>Clear</i>	
SLT				



STATE COLLEGE, Pa. Date

NOV 15 1943

Time

0700

Max. 35	Wind F SW 2	Barom. t 63	General Obs. 0320-0415 $\times$ 1°
Min. 26	Vis. km. 15	p 28.97	0635-0945 $\times$ 1°
Dry 33	Clouds 10	p (red.) 28.88	0945-1005 0° 1130-1132 $\times$ 1°
Wet	Sc, As, Ns		1700-2400 10/10
R.H. 63		Morn. snow	Foren. ov
Precip. T mm / T in.		Noon cldy	Aftern. ov
Snowfall / -Depth T in / T in.		Eve. ov	Night ov



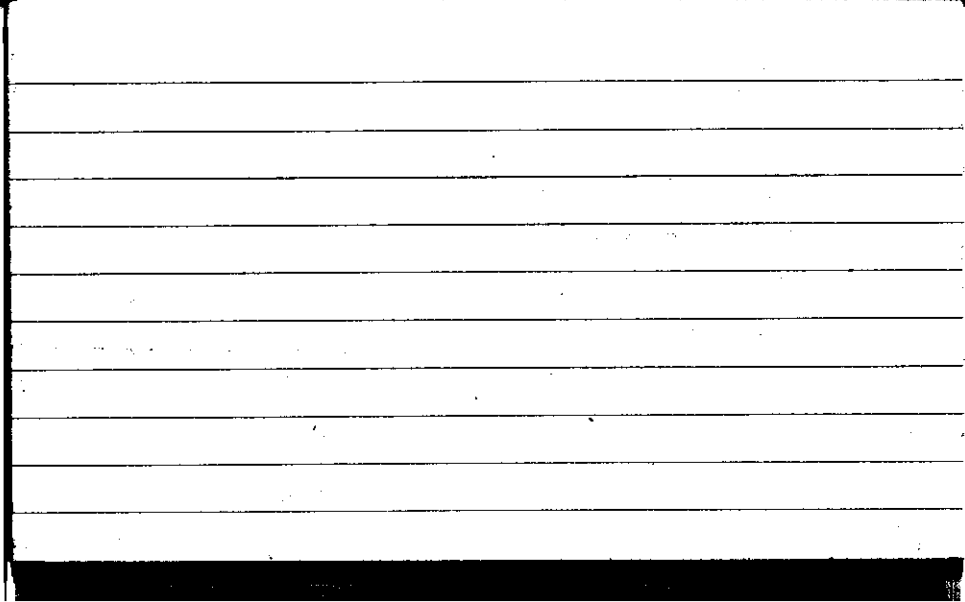
STATE COLLEGE, Pa. Date

NOV 16 1943

Time

0706

Max. 44	Wind F W 2	Barom. t 65	General Obs. 0000 - 0445 ° 0630 - 0845 (9) 0845 - 1300 * 1300 - 1350 * 1350 - 1545 1/4° 1630 - 1650 1/4° 2040 - 2400 1/4°	ci ft ci nme ci frou
Min. 30	Vis. km. 8	p 28.72		
Dry 36	Clouds 10	p (red.) 28.62		
Wet 34	St, Sc Ns			
R.H. 82		Morn. cldy rain drizzle	Foren. cldy	
Precip. 0.2 mm/0.03 in.		Noon Fair pt cldy to cldy	Aftern. <del>pt cldy</del> - cldy	
Snowfall/-Depth 7 in/ mths n.		Eve. Fair pt cldy	Night Fair to pt cldy	

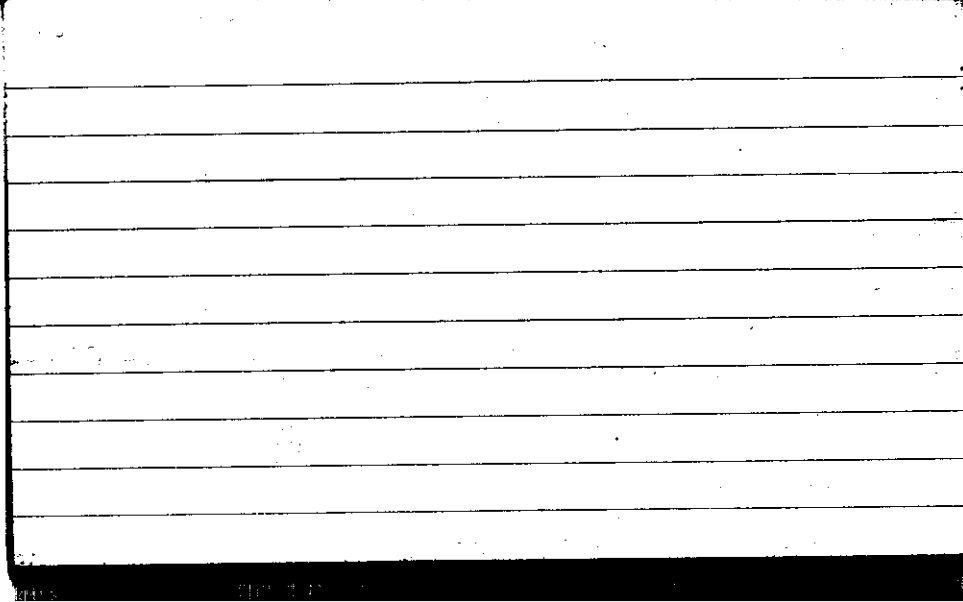




STATE COLLEGE, Pa. Date NOV 17 1943

Time  
0700

Max. 38	Wind F WSW 2	Barom. t 63	General Obs. 0230 - 0300 * <sup>o</sup>	Cs Cl fil.
Min. 20	Vis. km. 8	p 28.88	0420 - 0540 * <sup>o</sup>	Cc Cs dense
Dry 24	Clouds 4	p (red.) 28.79	0910 - 1230 * <sup>o</sup>	
Wet	Cu, As, Ac		1815 - 1940 * <sup>o</sup>	
R.H. 85%		Morn. pt. cldy to cly	Foren. cly	
Precip. 0.4 mm / 0.2 in.		Noon pty cly	Aftern. cldy to pty cly	
Snowfall/-Depth 0.2 in / T in.		Eve. pty cldy to cldy, etc	Night clearing	



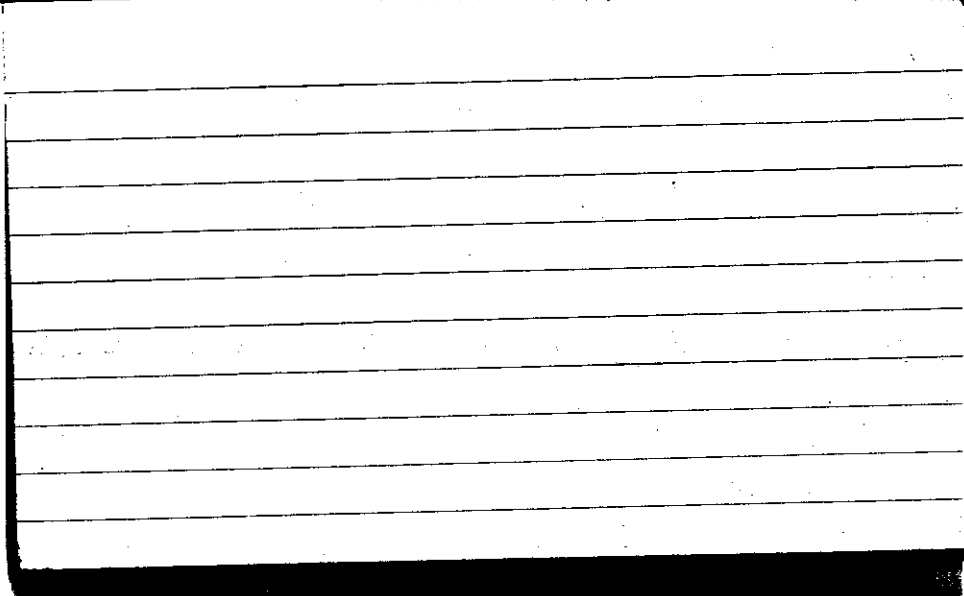
STATE COLLEGE, Pa. Date

NOV 18 1943

Time

0700

Max. 33	Wind F SW 2	Barom. t 63	General Obs. ci fil cc ci vert. cc vert.
Min. 23	Vis. km. 15	p 28.98	
Dry 30	Clouds 6	p(red.) 28.89	
Wet 26	Sq, As, Ac		
R.H. 57		Morn. Pt. Cldy	Foren. Fair
Precip. T mm/ T in.		Noon Fair	Aftern. Fair
Snowfall/-Depth T in/ T in.		Eve. clear	Night clear



STATE COLLEGE, Pa. Date

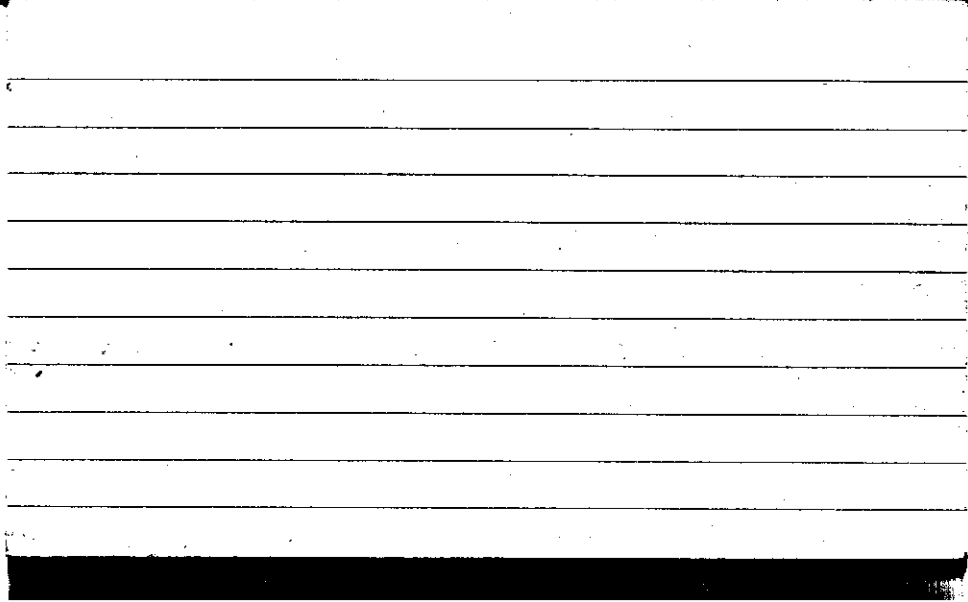
NOV 19 1943

Time

0700

Max. 48	Wind F S 2	Barom. t 65	General Obs. L <sup>o</sup> ce cs fern cs sm.	
Min. 29	Vis. km. 12	P 28.85		
Dry 41	Clouds 2	p(red.) 28.75		
Wet 38	ci, cs, cc ci Ps ci Vert ci floc As			
R.H. 67		Morn. Fair	Foren. Fair	
Precip. — mm/ — in		Noon Fair	Aftern. Fair	
Snowfall/-Depth — in/ — in		Eve. Clear	Night Clear	

CLT

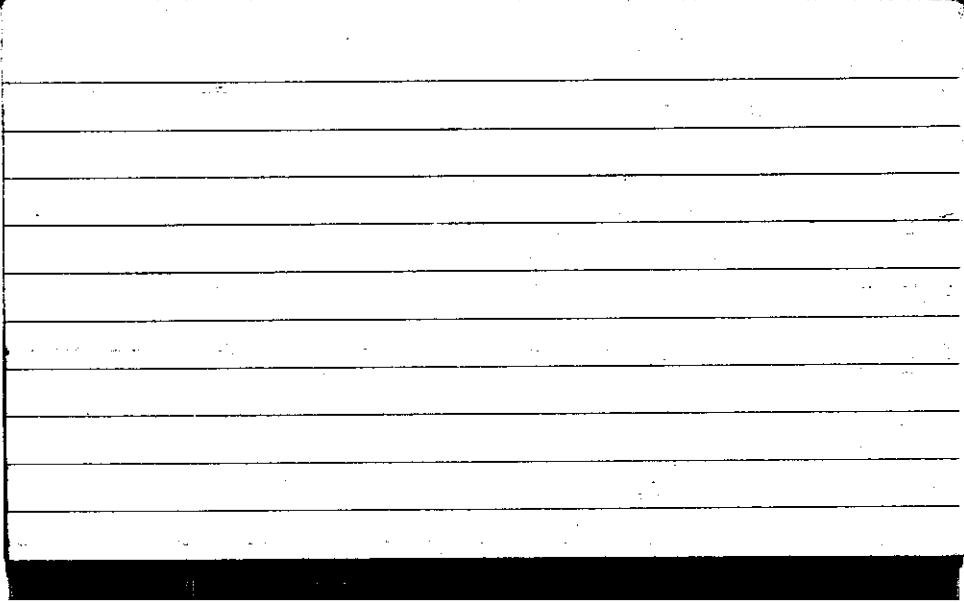


STATE COLLEGE, Pa. Date NOV 20 1943

Time  
0700

Max. 58	Wind F calm	Barom. t 66	General Obs. = terrace mts.	☉ 0930 - 1030 as seen; cc is from
Min. 41	Vis. km. 5	p 28.90	∞	
Dry 44	Clouds 10 As, As	p(red.) 28.86		
Wet 41				
R.H. 78		Morn. <i>cldy</i>	Foren. <i>cldy</i>	
Precip. — mm/ — in.		Noon <i>Pt cldy</i>	Aftern. <i>cldy</i>	
Snowfall/-Depth — in/ — in.		Eve. <i>Pt cldy</i>	Night <i>clear</i>	

SLT




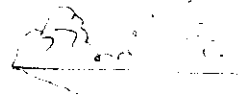




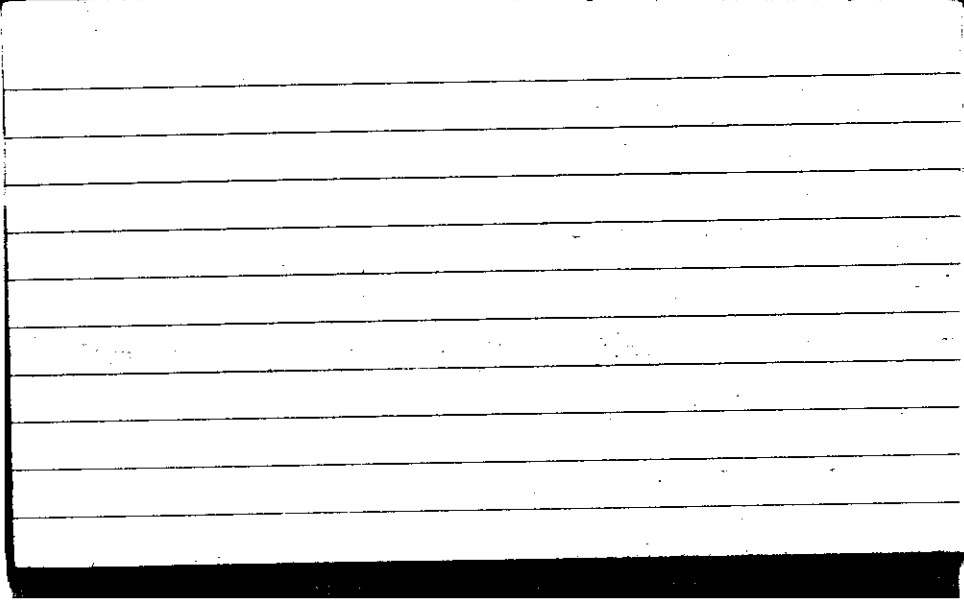
STATE COLLEGE, Pa. Date

NOV 21 1943

Time

0700

Max. 53	Wind F SW 2	Barom. t 66	General Obs. <input type="checkbox"/> <sup>2</sup>	Acc 1430
Min. 26	Vis. km. 8	p 28.93	1330 - 1610 	
Dry 27	Clouds 3	p(red.) 28.83	1610 - 1730 	
Wet 26	As As Ci		1730 - 1820 	
R.H. 88		Morn. Fair	Foren. Pt. Cldy	
Precip. — mm/ — in.		Noon Cldy	Aftern. Cldy	
Snowfall/-Depth — in/ — in.		Eve. overcast	Night Cldy	

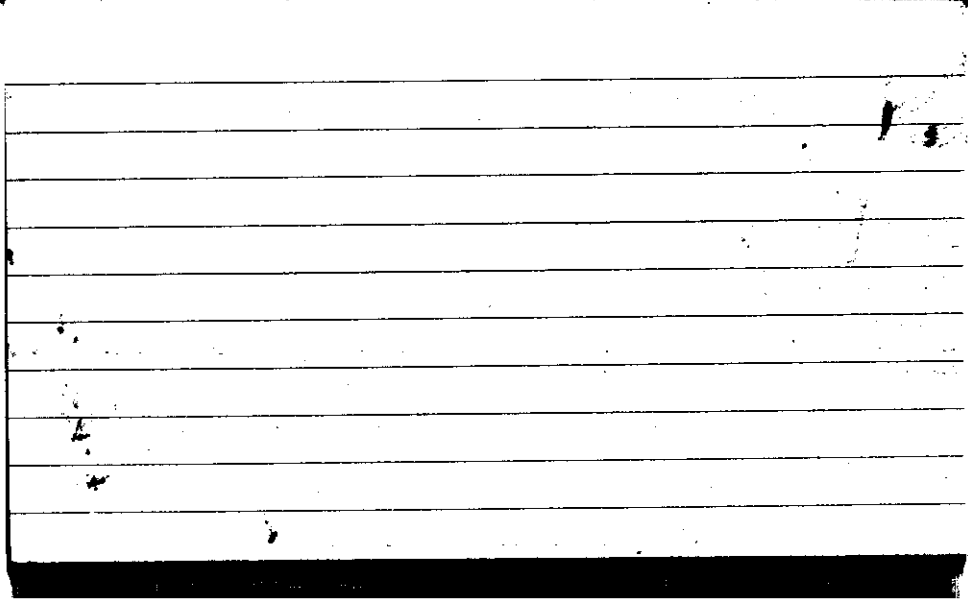


STATE COLLEGE, Pa. Date

NOV 22 1943

Time  
0700

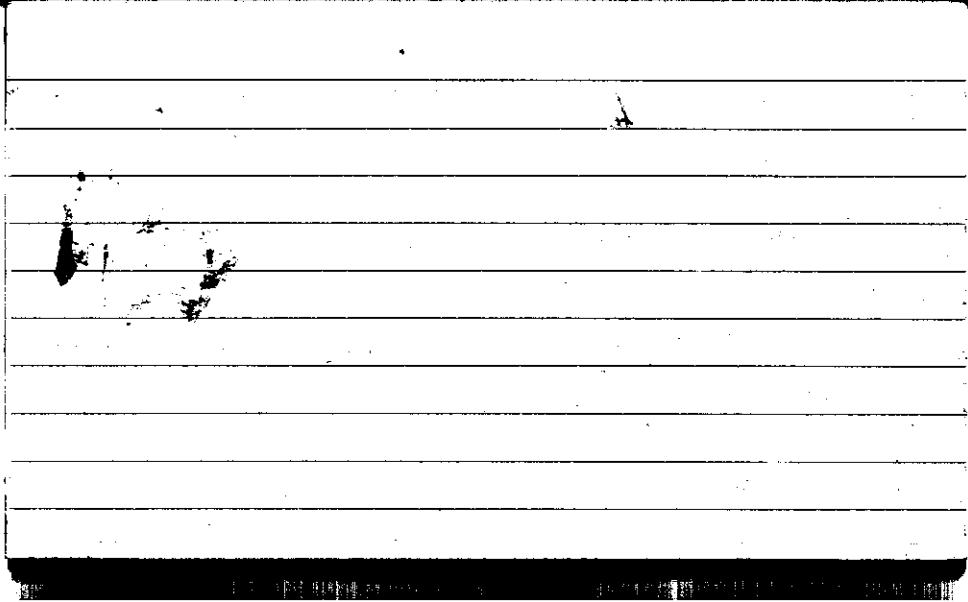
Max. 47	Wind F NW 4	Barom. t 64	General Obs. 1035-1250 10/10	
Min. 26	Vis. km. 25	p 29.00		
Dry 35	Clouds 10 sc	p(red.) 28.90		
Wet 31				
R.H. 64		Morn. cldy	Foren. cldy	
Precip. 4.8 mm/0.19 in.		Noon Cloudy	Aftern. pt. cldy	
Snowfall/-Depth in/ in.		Eve. Clear	Night Clear	
CLT				



STATE COLLEGE, Pa. Date **NOV 23 1943**

Time  
0700

Max. 36	Wind F W 4	Barom. t 64	General Obs. 1110' as seen as from as file
Min. 27	Vis. km. 25	29.06	Acc <del>...</del> in W and E Ac lent well developed
Dry 28	Clouds 2	p(red.) 28.97	
Wet	As, A clear		
R.H. 68		Morn. Fair	Foren. fair
Precip. T mm/ T in.		Noon fair	Aftern. pky dry
Snowfall/-Depth T in/ T in.		Eve. pky dry	Night fair clearing



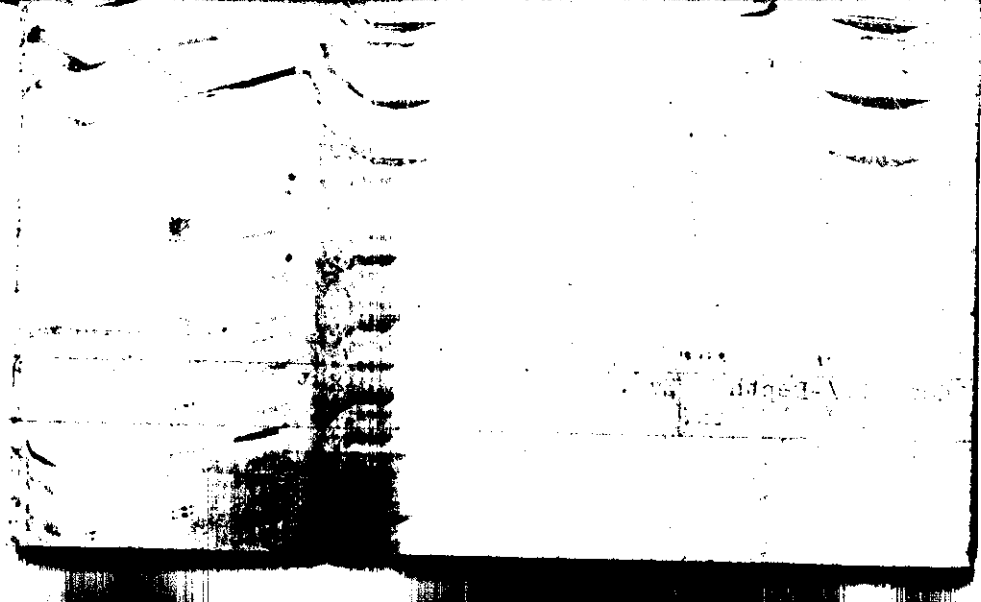
STATE COLLEGE, Pa. Date

NOV 24 1943

Time

0700

Max. 42	Wind F WNW 4	Barom. ± 68	General Obs. 0930 - 1100 cs neb ☉ cs flum ca cipna	
Min. 27	Vis. km. 40	29.10		
Dry 33	Clouds 4	p(red.) 29.00		
Wet	ci pd. cs neb cs flum ca			
R.H. 34%	Ac best	Morn. fair	Foren. pthy day	
Precip. — mm/ — in.		Noon Pt. Cldy - Fair	Aftern. Fair	
Snowfall/-Depth — in/ — in.		Eve. Clear	Night Clear	



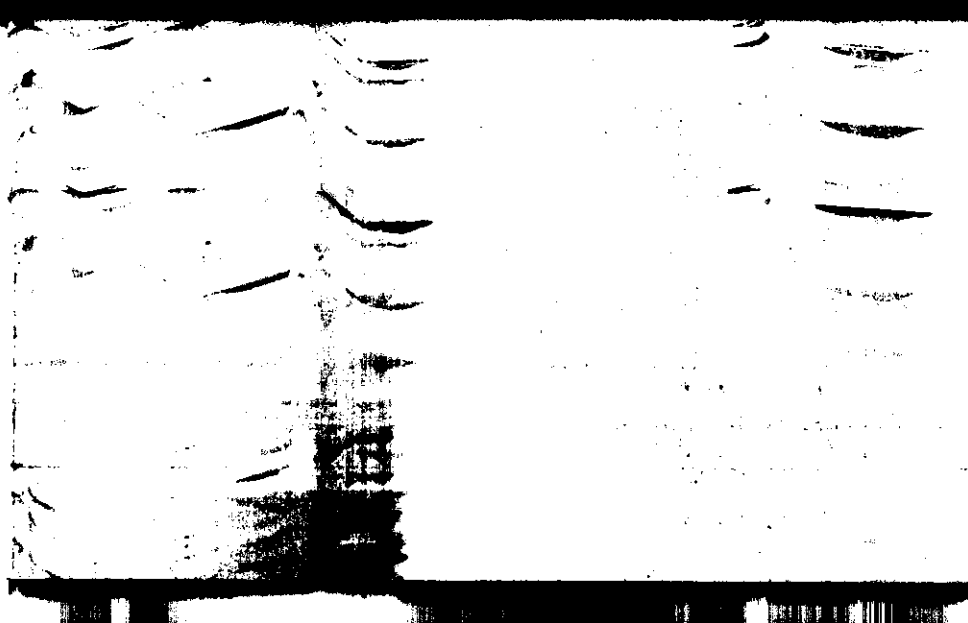


STATE COLLEGE, Pa. Date

NOV 25 1943

Time  
0700

Max. 51	Wind F SW 3	Barom. 72	General Obs. L	
Min. 32	Vis. km. 20	P 29.18		
Dry 33	Clouds 1 Ci fi	p(red.) 29.07		
Wet 29				
R.H. 61		Morn. Fair	Foren. Clear	
Precip. mm/ - in.		Noon Clear	Aftern. Clear	
Snowfall/-Depth in/ - in.		Eve. Clear	Night Clear	
CLT				

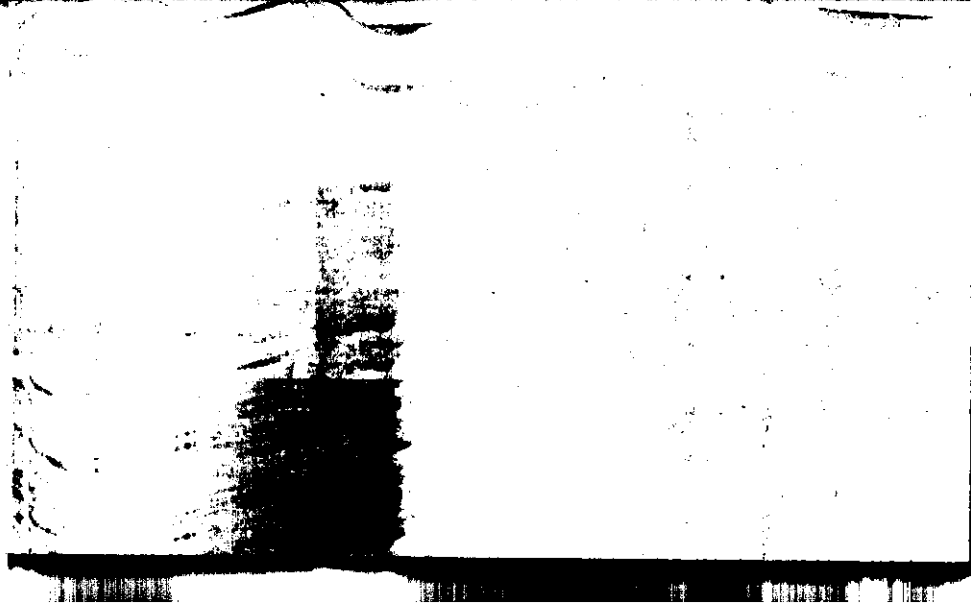


STATE COLLEGE, Pa. Date

NOV 26 1943

Time  
0700

Max. 54	Wind SE 1	Barom. 68	General Obs. 0805 - (a) as met 1500	
Min. 31	Vis. km. 7	29.01		
Dry 31	Clouds 2	p (red.) 28.91		
Wet 28	ci pd ci fi ci fra	5.		
R.H. 69	cs	Morn. Fair	Foren. Fair	
Precip. - mm/ - in		Noon Fair	Aftern. Fair	
Snowfall/ - Depth - in/ - in		Eve. Fair - clear	Night Fair	
ET				

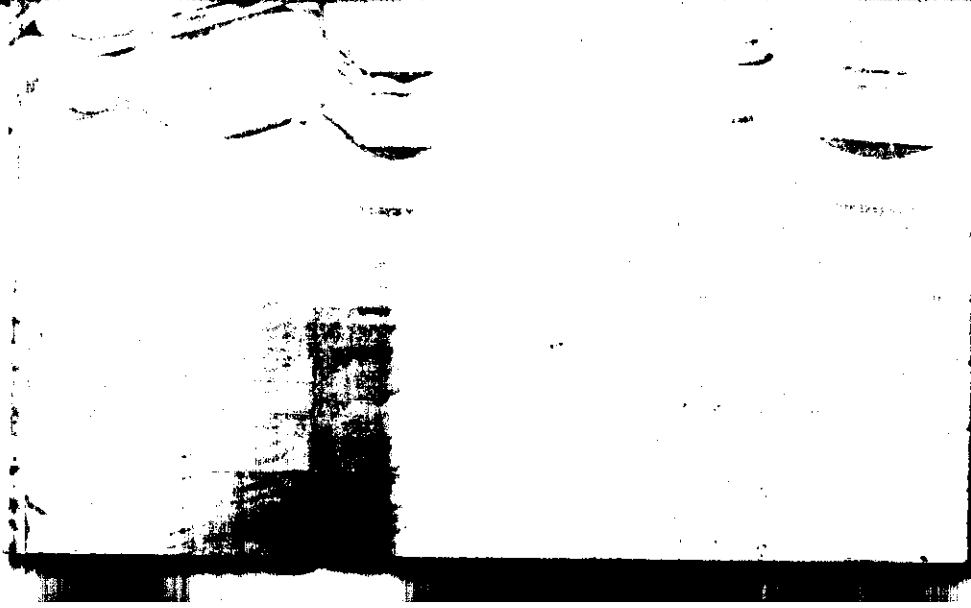


STATE COLLEGE, Pa. Date

NOV 27 1943

Time  
07 00

Max. 54	Wind F SW 3	Barom. 70	General Obs. 00	
Min. 31	Vis. km. 2 1/2	28.72	1030-1100 ° 1100-1330 *°	
Dry 44	Clouds 10	p(red.) 28.61		
Wet 37	As, St			
R.H. 51		Morn. OVC	Foren. OVC	
Precip. mm/ - in.		Noon OVC	Aftern. clly - Pt clly	
Snowfall/-Depth - in/ - in.		Eve. Pt. clly	Night Pt. clly	



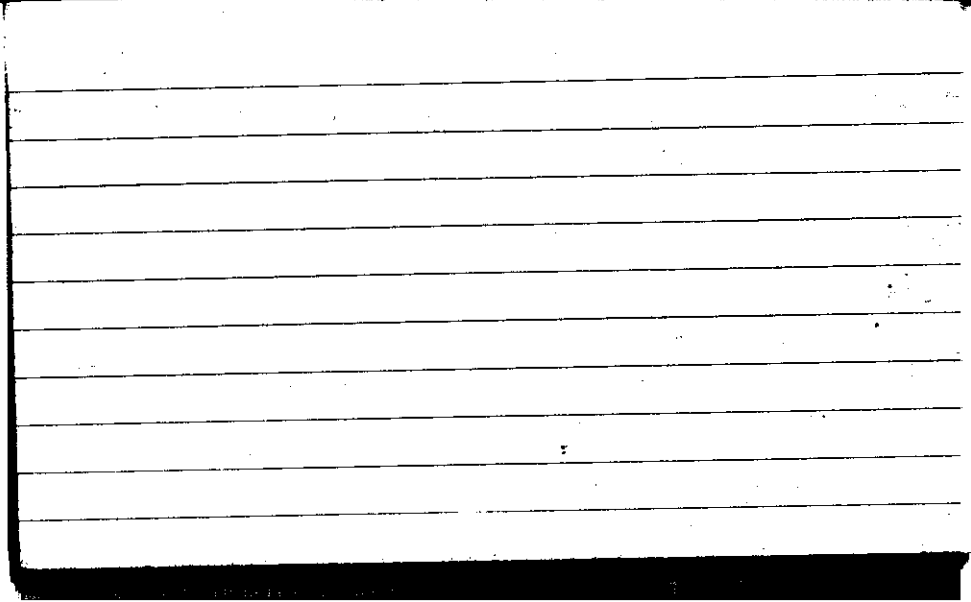
STATE COLLEGE, Pa. Date

NOV 28 1943

Time  
0700

Max. 44	Wind F W 2	Barom. t 68	General Obs.
Min. 25	Vis. km. 20	p 28.86	0900/4 <sup>0</sup> - 1530
Dry 27	Clouds 7	p(red.) 28.76	
Wet 25	sc		
R.H. 76		Morn. cldy	Foren. over mns
Precip. T mm/ T in.		Noon over	Aftern. cldy cb.
Snowfall/-Depth T in/ - in.		Eve. cldy	Night clear

CLT

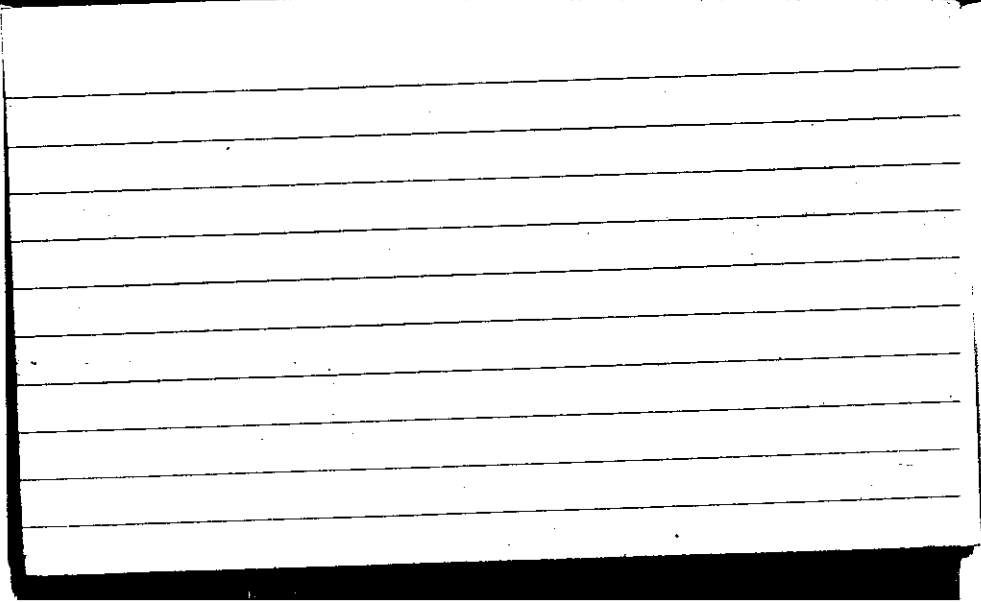




STATE COLLEGE, Pa. Date NOV 29 1943

Time  
0700

Max. 33	Wind F E 2	Barom. t 72	General Obs. = fuds mts L <sup>2</sup>
Min. 20	Vis. km. 18	p 28.92	
Dry 20	Clouds 3	p (red.) 28.81	
Wet	Ac, As	-6	
R.H. 96		Morn. Fair	Foren. Pt. cldy
Precip. T mm / T in.		Noon Pt. cldy	Aftern Pt. cldy
Snowfall / -Depth T in / - in.		Eve. cldy	Night cldy



STATE COLLEGE, Pa. Date NOV 30 1943

Time  
0700

Max. 33	Wind F SW 2	Barom. t 67	General Obs.	
Min. 20	Vis. km. 10	P 28.80	☼ 2140-2200 <sup>h</sup> 0930 Cg neb oc -1000	
Dry 28	Clouds 10 St, Sc	p(red.) 28.70		
Wet				
R.H. 80		Morn. <del>clgy</del> ovc	Foren. clgy to ovc	
Precip. — mm/ — in.		Noon ovc	Aftern. ovc	
Snowfall/-Depth — in/ — in.		Eve. ovc	Night ovc	mor

CLT

