

STATE COLLEGE, Pa. Date

SEP - 1 1943

Time
07 00

Max. 85	Wind F SSE 1	Barom. t 80	General Obs.
Min. 59	Vis. km. 10	p 28.93	
Dry 71	Clouds 10 with Breaks	p (red.) 28.80	
Wet 65	Ac, Alund. Fc		
R.H. 73		Morn. ^{Alund, Alund, Alund} Ovc. → ad → Pfly, lky	Foren. pfly cldy. → Fair
Precip. — mm / — in.		Noon Fair	Aftern. Fair
Snowfall / -Depth — in / — in.		Eve. Fair	Night Fair → Clear

A.B.

- Polai (21 - 6 / 6 - 3.0 3.0
-4
-2

STATE COLLEGE, Pa. Date

SEP - 2 1943

Time

0700

Max. 92	Wind F SW 2	Barom. t 84	General Obs. 0330 - 0540 } 0710 - 0715 } ci fil, as dens. cc ci flocc.
Min. 70	Vis. km. 8	p 28.87	1445 - 1530
Dry 70.5 70	Clouds 9	p (red.) 28.73	
Wet 67.5 69	Ac, Sc, St Fc, Cc, Gf, C. pra.		
R.H.		Morn. cldy. → ovc.	Foren. Ovc.
Precip. 4.5 mm / .18 in.		Noon cldy → Pt. cldy	Aftern. Pt. cldy
Snowfall / -Depth — in / — in.		Eve. Fair	Night Clear
A.B.			

V1
-3

11

-3

✓

-3

3

-3.0

3.0

STATE COLLEGE, Pa. Date SEP - 3 1943

Time 0700

Max. 89	Wind F calm	Barom. t 84	General Obs. = 74 61/3
Min. 62	Vis. km. 1	p 29.00	9 0900-0910
Dry 64	Clouds 10	p(red.) 28.85	
Wet 63	st		
R.H. 95		Morn. ovc	Foren. ovc.
Precip. T mm / T in.		Noon ovc	Aftern. ovc
Snowfall/-Depth - in / - in.		Eve. ovc	Night ovc
SLT			

- 8

Porto Rico (26) -43 +35 78 -0.3 3.0

2	0			
-1	0			
6	-5			
3	-5			
3	-5			
1	1			
2				
-1				
-9				
0				
-1				
0				
9				
2				
-3				
-8				
0				
2				
-5				
4				

STATE COLLEGE, Pa. Date

SEP - 4 1943

Time
0700

Max. 70	Wind F calm	Barom. t 80	General Obs. 0310 - 0330 ☽
Min. 63	Vis. km. 5	P 29.07	0330 - •
Dry 63	Clouds 10	p(red.) 28.93	0715 - 0800 •°
Wet 62	st, Fs		0800 - 1000 191°
			1145 - 1200 •°
			2345 - 2400 ☽
R.H.		Morn. ovc	Foren. ovc
Precip. 0.5. mm/0.02 in.		Noon ovc	Aftern. ovc
Snowfall/-Depth - in/ - in.		Eve. ovc	Night ovc
CLT			

STATE COLLEGE, Pa. Date **SEP - 5 1943**

Time
0700

Max 70	Wind F S 2	Barom. t 77	General Obs. 1520 - 2230/01	<div style="border: 1px solid black; padding: 2px;"> <i>ci flow w/ p ce</i> </div>
Min. 63	Vis. km. 3	p. 28.93		
Dry 70	Clouds 10	p(red.) 28.80	1805 ☉ 2150 ☉	
Wet 67	st, fc.			
R.H. 86		Morn. ovc	Foren. ovc	
Precip. T mm/ T in.		Noon ovc	Aftern. ovc	
Snowfall/-Depth - in/ - in.		Eve. ovc-rdy	Night cldy → ovc.	

CLT

Zürich (34) - 87 + 34 121			-1.6	3.6
7	-4	1		
4	-1	1		4.2
3	-6	3		
-1	-1	3		-2.8
7	-3	4		
-1	-3	0		+11
0	-4	1		
0	6	-8		-17
-6	-7	3		
-3	-6	5		39
-5	-3			
-3	-1			-1.7
4	-2			
0	-2			3.9
-4				
-9				
-6				
-5				
-1				
3				

STATE COLLEGE, Pa. Date

SEP - 6 1943

Time
0700

Max. 82	Wind F SE 1	Barom. t 80	General Obs. ∞ 0030 ° - 0045	SW 2000
Min. 69	Vis. km. 6	p 28.91		
Dry 69	Clouds 9	p (red.) 28.78		
Wet 68	Ac, low			
R.H.		Morn. cldy → pty cldy	Foren. pty cldy	
Precip. .23 mm/.01 in.		Noon pty cldy.	Aftern. pt cldy	
Snowfall/-Depth in/- in.		Eve. pt cldy	Night pty cldy → cldy	

A B

Kana (14) - 4 + 19 + 15 23 + 11 16

Syn^a
20-60N 30-32
140-180F

STATE COLLEGE, Pa. Date

SEP - 7 1943

Time

0700

Max.	Wind F	Barom.	General Obs.
91	SW 2	t 84	0330 - 0500 / 0/0
Min. 69	Vis. km. 14	p 28.80	0500 - 0600 / 0/0
Dry 70	Clouds 10	p(red.) 28.66	0600 - 1000 / 0/0
Wet 69	ST, FS, Sc As, NS		
R.H. 95		Morn. Rain ovc.	Foren. Rain ovc.
Precip. 0.2 mm / .01 in.		Noon ovc. → cldy	Aftern. cldy → ovc.
Snowfall/-Depth — in / — in.		Eve. ovc. → cldy.	Night cldy → pty. cldy.

P.B.

STATE COLLEGE, Pa. Date

SEP - 8 1943

Time
0700

Max. 73	Wind F W 1	Barom. t 77	General Obs. $\ominus = \Delta$	
Min. 52	Vis. km. 9	p 28.91		
Dry res 52	Clouds 1	p(red.) 28.78		
Wet sa 51	<small>c umc c dens c pra c flocc c</small>			
R.H. 94		Morn. Fair \rightarrow Pthly cldy	Foren. Pthly cldy	
Precip. 0.7 mm / .03 in.		Noon Pthly cldy	Aftern. Pthly cldy \rightarrow Fair	
Snowfall/-Depth — in / — in.		Eve. Fair \rightarrow clear	Night clear	

H. B.

5.0	7
+4.0	7
10	3
+8	-7
+9	1
-1	-1
	-5
	5
	7
	-9
	-5
	1
	-8
	9
(2)	

[Barfona] / (15) - 33 + 37 70 + 0.3 4.7

+4

STATE COLLEGE, Pa. Date

SEP - 9 1943

Time

0700

Max. 81	Wind F S 2	Barom. t 75	General Obs. α° 1200-1730
Min. 52	Vis. km. 20	p 28.91	
Dry res 52	Clouds 10 with Breaks	p(red.) 28.79	
Wet 51	Sc, Fs, Ac		
R.H. 91		Morn. Ovc. \rightarrow cldy	Foren. cldy \rightarrow Ptlly. Sldy
Precip. — mm / — in.		Noon Ptlly. cldy.	Aftern. Ptlly. cldy.
Snowfall / -Depth — in / — in.		Eve. Pth. cldy \rightarrow Fair \rightarrow Clear	Night Clear

A. B.

0.0
0.0
0

/
/
/

-3
-2
-1
-1
9

(1) $9x^2 - 15x + 4$
-6
24 -12 48

STATE COLLEGE, Pa. Date

SEP 10 1943

Time

0700

Max. 75	Wind F W 2	Barom. t 74	General Obs. $\infty \infty \infty$	
Min. 44	Vis. km. 10	p 28.09		
Dry 45	Clouds < 1	p(red.) 28.97		
Wet 46	Ca			
R.H. 82		Morn. Clear → Fair	Foren. Fair → pty cldy	
Precip. $\frac{0.00}{0.00}$ in.		Noon pty cldy.	Aftern. pty cldy.	
Snowfall/-Depth in/ in.		Eve. pty cldy → Fair	Night clear	

F. B.

04
04-
4
4-
/
4-

(1) 10 10 10 10 10 10 10 10 10 10
-4 -4 -4 -4 -4 -4 -4 -4 -4 -4
-5.0 -5.0 -5.0 -5.0 -5.0 -5.0 -5.0 -5.0 -5.0 -5.0

STATE COLLEGE, Pa. Date

SEP 11 1945

0700

Max. 67	Wind F calm	Barom. t 71	General Obs. ∞ $\frac{1}{2}$	cc cs ci ma
Min. 43	Vis. km. 6	29.09		
Dry 44	Clouds 1 Ce 100 Ac	p (red.) 28.98		
Wet 44			Foren. Fair	
R.H. 86			Aftern. Fair	
Precip. — in/ — in		Noon Fair	Night Clear	
Snowfall, Depth in/ — in		Eve. Fair		
CLT				

The following reference is missing in the
College/W.I. Library:

Author:

Title:

Year:

Price:

Purchase is desirable: Immediately

eventually

Please fill out and give either to Miss
Lucille Jackson or H. Landberg. Your

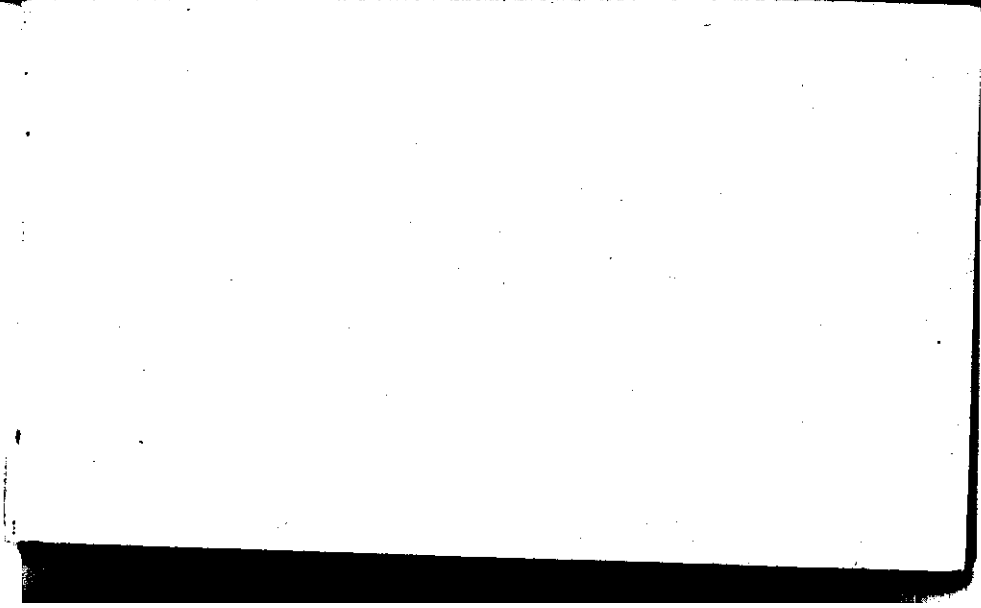
cooperation is appreciated.

STATE COLLEGE, Pa. Date

SEP 12 1943

Time
0700

Max. 67	Wind F Calm	Barom. t 68	General Obs. = "towards Shingletown"	40 1300 - 1215
Min. 36	Vis. km. 25	p 29.20	L ^o	ci pa ci nne ci pe ci pkm
Dry 38	Clouds 1 Cs	p (red.) 29.10		
Wet 35	G. Nam			
R.H. 84		Morn. Fair	Foren. Fair	
Precip. - mm/ - in.		Noon Fair	Aftern. Fair	
Snowfall/-Depth - in/ - in.		Eve. Fair	Night Fair	



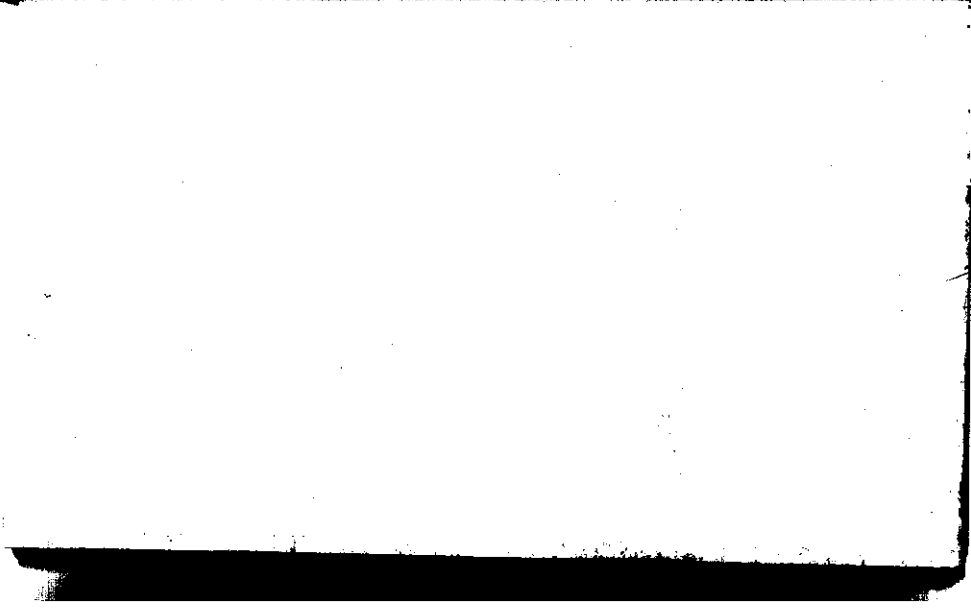
STATE COLLEGE, Pa. Date

SEP 13 1943

Time

0700

Max. 63	Wind F NE 1	Barom. t 67	General Obs. <i>W</i>	
Min. 37	Vis. km. 12	p 29.17		
Dry 40	Clouds 1	p(red.) 29.10		
Wet 39	C. pd, C. fil C. flocc.			
R.H. 96		Morn. Fair	Foren. Fair	
Precip. mm/— in.		Noon Fair	Aftern. Fair	
Snowfall/-Depth — in/— in.		Eve. Fair	Night Fair → Clear	



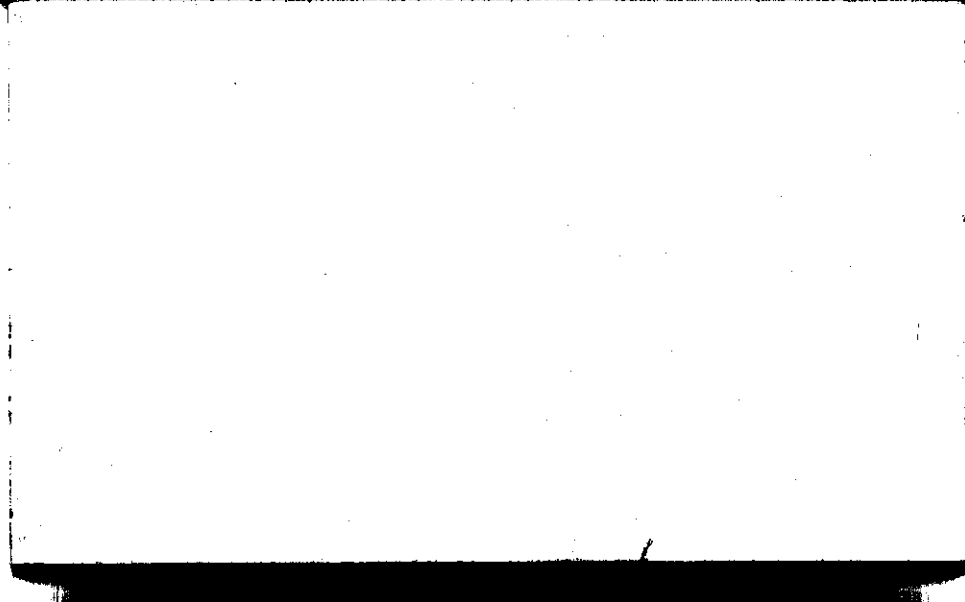
STATE COLLEGE, Pa. Date

SEP 14 1943

Time

0700

Max. 71	Wind F E 1	Barom. t 70	General Obs. <i>2-0</i>	
Min. 40	Vis. km. 7	p 29.06		
Dry 50	Clouds 2 inc.	p (red.) 28.95		
Wet 49	Cu, Fe, Fs			
R.H. 87		Morn. Fair → Pth cldy.	Foren. Pth cldy → Fair	
Precip. — mm / — in.		Noon Fair → clear	Aftern. clear	
Snowfall / -Depth — in / — in.		Eve. clear → Fair	Night Fair → Pth cldy	



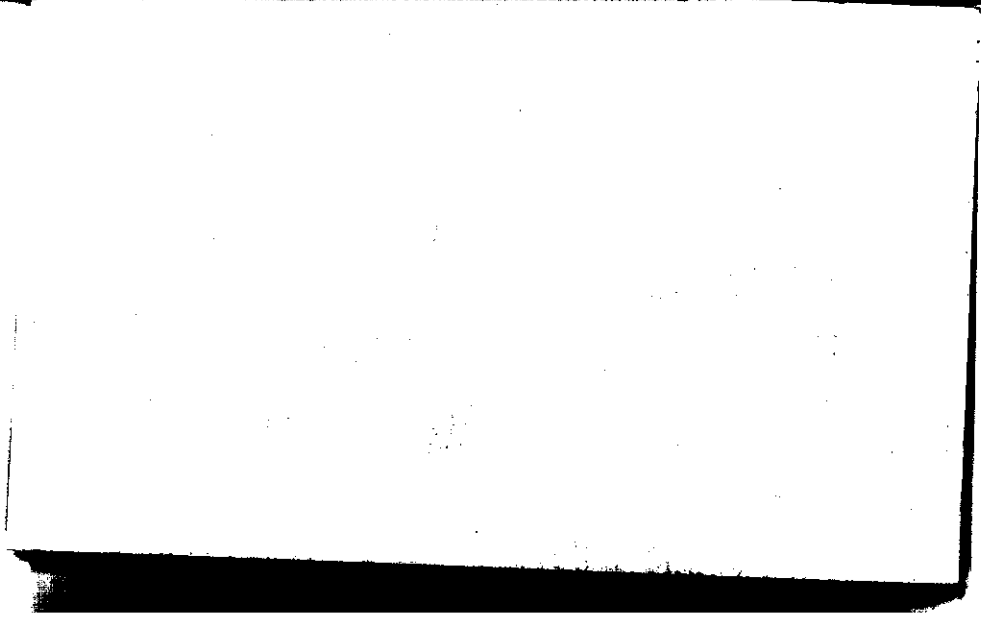
STATE COLLEGE, Pa. Date

SEP 15 1943

Time
0700

Max. 73	Wind F Caln	Barom. t 73	General Obs. α 00 ci fe ci from 4 neb.
Min. 49	Vis. km. 10	p 28.80	
Dry rs 49	Clouds 5	p(red.) 28.75	
Wet 48	A		
R.H. 90		Morn. Ptlly cldy \rightarrow Fair	Foren. Fair \rightarrow Ptlly cldy
Precip. — mm / — in.		Noon Ptlly cldy.	Aftern. Ptlly cldy \rightarrow Fair
Snowfall / -Depth — in / — in.		Eve. Fair	Night Fair \rightarrow Ptlly cldy

AB.

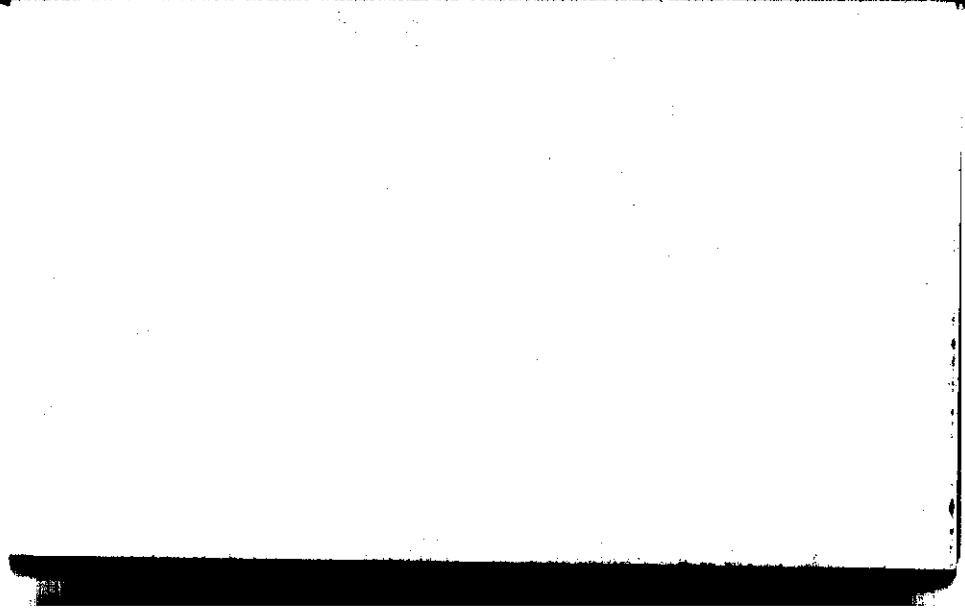


STATE COLLEGE, Pa. Date

SEP 16 1943

Time
0700

Max. 79	Wind F SW 2	Barom. t 76	General Obs. 0640-1130 14°
Min. 49	Vis. km. 15	p 28.82	
Dry 61	Clouds 9	p(red.) 28.70	
Wet 57	Acc, Ac, cum Ac, As, Cum		
R.H. 79		Morn. cldy → ovc. Rain	Foren. ovc. Rain
Precip. T mm/ T in.		Noon ovc → cldy Rain	Aftern. cldy → pty cldy
Snowfall/-Depth in/ in.		Eve. pty cldy → cldy → ovc.	Night ovc. → cldy → pty cldy
A.B.			



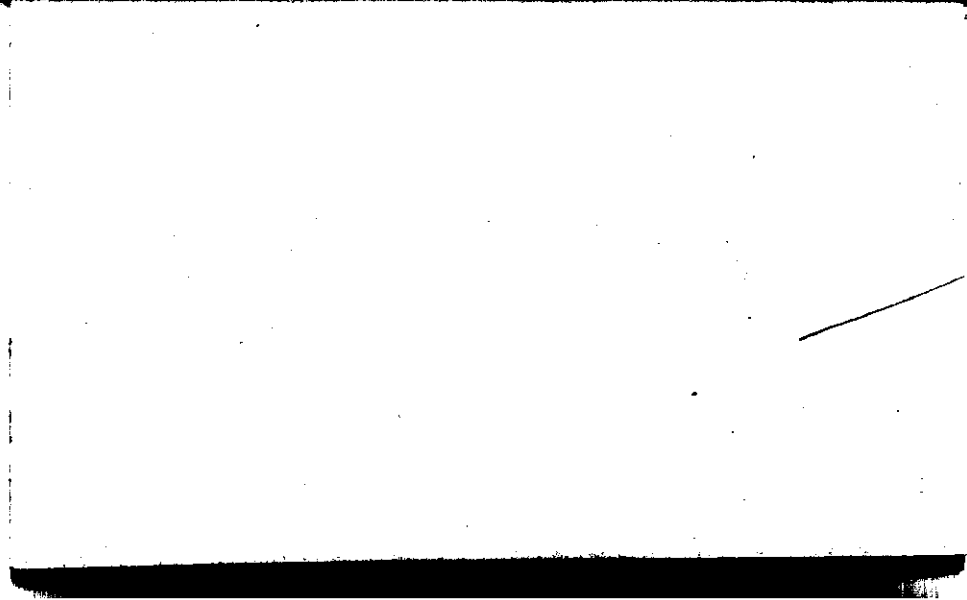
STATE COLLEGE, Pa. Date

SEP 17 1943

Time

0700

Max. 71	Wind F 5 2	Barom. t 74	General Obs. 0145 ●° - 0230	
Min. 48	Vis. km. 18	p 29.06		
Dry 48	Clouds 2	p(red.) 28.94		
Wet no. 76	condens, G, H S, H, G, und Ac lent, F, E			
R.H.		Morn. Fair → PM, cldy	Foren. PM, cldy → cldy.	
Precip. 0.7 mm / .03 in.		Noon cldy	Aftern. cldy → ovc.	
Snowfall / - Depth — in / — in.		Eve. Fair	Night clear	



STATE COLLEGE, Pa. Date SEP 18 1943

Time
0700

Max. 63	Wind F calm	Barom. t 70	General Obs. ☁ ☁ ☁	
Min. 33	Vis. km. 4	p 29.31		
Dry 36	Clouds clear	p(red.) 29.20		
Wet 35 ³⁷				
R.H. 83		Morn. clear	Foren. fair	
Precip. — mm/ — in.		Noon fair	Aftern. fair at 11 at 10am	
Snowfall/-Depth — in/ — in.		Eve. clear	Night clear	

CLT

Cloudy Days

STATE COLLEGE, Pa. Date

SEP 19 1943

Time
0700

Max. 66	Wind F calm	Barom. t 70	General Obs. (=) L	@ 1600 - comet 1800
Min. 36	Vis. km. 15	p 29.18		
Dry 38	Clouds clear	p (red.) 29.07		
Wet 38				
R.H. 100		Morn. clear	Foren. clear	
Precip. - mm/ - in.		Noon clear → Fair	Aftern. ^{clouds, sun, a bit} Fair	
Snowfall/ -Depth - in/ - in.		Eve. Fair → clear	Night Clear → Fair → Fair	

CLT

Clouds

STATE COLLEGE, Pa. Date

SEP 20 1943

Time

0700

Max. 72	Wind F Calm	Barom. t 70	General Obs. 0727-0740 101°	Clouds 1445-1530 1535- 1600 (C)
Min. 37	Vis. km. 18	p 28.98		
Dry 50	Clouds 10	p (red.) 28.87		
Wet 46.5	As, Ac, Al, und Acc			
R.H. 77		Morn. Orc. → cldy	Foren. cldy → Pthly cldy.	
Precip. —	mm/ — in.	NOON cldy → Pthly cldy	Aftern. Pthly cldy → Fair	
Snowfall/ -Depth —	in/ — in.	Eve. Fair → Pthly cldy → cldy	Night cldy → Pthly cldy	

Cloudiness

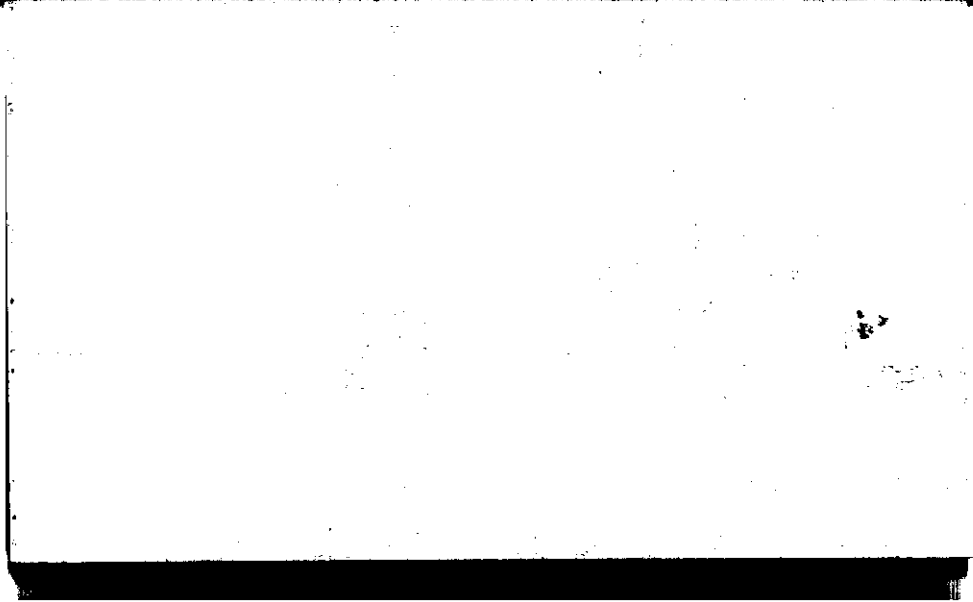
STATE COLLEGE, Pa. Date

SEP 21 1943

Time

0700

Max. 74	Wind F N 2	Barom. t 73	General Obs. α (=) 0900 δ -1000 as well in same way	
Min. 49	Vis. km. 7	p 28.95		
Dry 50	Clouds 4	p(red.) 28.83		
Wet 49	Cond. Apol Cond. Sc Apra.			
R.H. 93		Morn. Ptlly cldy.	Foren. Ptlly cldy.	
Precip. T mm / T in.		Noon Ptlly cldy	Aftern. Ptlly cldy	
Surface V - depth T in.		Ave. fair cics	Night fair	

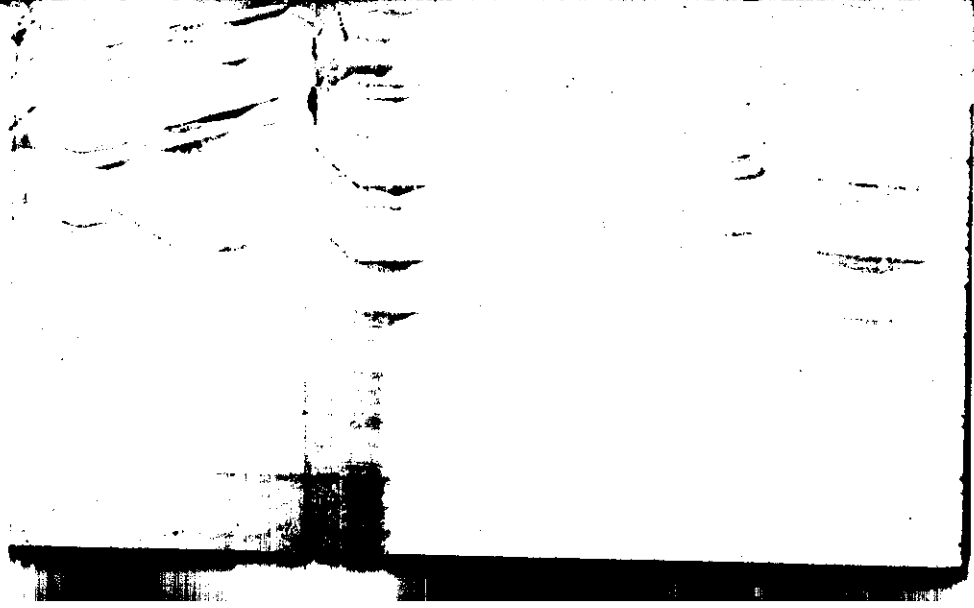


STATE COLLEGE, Pa. Date

SEP 22 1943

Time
0700

Max. 73	Wind F calm	Barom. 74	General Obs. \equiv α^2
Min. 48	Vis. km. 0.1	P 28.91	
Dry 48	Clouds X	p(red.) 28.79	
Wet 48-			
A.H. 98		Morn. Fog	Foren. Clear
Precip. — mm/ — in.		Noon Clear Fair	Aftern. Fair \rightarrow pty. sdy.
Snowfall/-Depth — in/ — in.		Eve. pty. cldy \rightarrow Fair	Night Fair



STATE COLLEGE, Pa. Date

SEP 23 1943

Time
0700

Max. 79	Wind F SW 1	Barom. t 77	General Obs. \circ	
Min. 47	Vis. km. 10	28.96		
Dry 52	Clouds	p (red.) 28.83		
Wet 49.5	sp. / cfil, G. ungs, G. flocc, G. dens, G. flamm G. pra.			
R.H. 84		Morn. Fair	Foren. 1/4 clt	
Precip. — mm / — in.		Noon A clt	Aftern. clt \rightarrow br	
Snowfall / -Depth — in / — in.		Eve. or	Night or	

Cloud burst

STATE COLLEGE, Pa. Date

SEP 24 1943

Time
8700

Max. 74	Wind F W 2	Barom. t 76	General Obs. ^{no}	0800 ☉ -
Min. 41	Vis. km. 30	p 28.92		0930 .1 corub -1015 by den
Dry 45	Clouds 9	p(red.) 28.80		
Wet 43	A _c , F _s			
R.H. 86		Morn. Ovc → cldy	Foren. cdy	
Precip. — mm / — in.		Noon cdy	Aftern. cdy	
Snowfall / -Depth — in / A.G. in.		Eve. cdy → Fair	Night clear	

Climatological

STATE COLLEGE, Pa. Date

SEP 25 1943

Time

0700

Max. 60	Wind F N 2	Barom. t 72	General Obs. ∞ ∞	0800-1400 ①
Min. 37	Vis. km. 15	p 28.91		
Dry 39	Clouds 8	p(red.) 28.80		
Wet 38	cc, cs cippt.			
R.H. 92	Ac Alto cum	Morn. cldy	Foren. cldy	
Precip. — mm/ — in.		Noon cldy	Aftern. cldy → Pt cldy	
Snowfall/-Depth — in/ CLT in.		Eve. Pt cldy - Fair	Night clear	

Climatic

STATE COLLEGE, Pa. Date **SEP 26 1943**

Time
0700

Max. 58	Wind F NW 2	Barom. t 73	General Obs. ☐ ² = °	
Min. 31	Vis. km. 25	p 29.05	<i>cs fann</i> <i>ci fl</i> <i>cc mid.</i> <i>1430 ☉ - 1500</i>	
Dry 35	Clouds 1	p (red.) 28.93		
Wet 34	cc, Ac			
R.H. 82		Morn. Fair	Foren. <i>pty clgy</i> <i>ci</i>	
Precip. — mm/ — in.		Noon <i>pty clgy</i>	Aftern. <i>ci Ac pty clgy</i>	
Snowfall/-Depth — in/ — in.		Eve. <i>pty clgy to fl</i> <i>Ac</i>	Night Fair	

Climate

STATE COLLEGE, Pa. Date

SEP 27 1943

Time
0700

Max. 62	Wind F SW 1	Barom. t 29.74	General Obs. ∞	
Min. 35	Vis. km. 10	p 29.13		
Dry 39	Clouds 1	p(red.) 29.01		
Wet 37	Cf, C, floc C, dens			
R.H. 80		Morn. Fair	Foren. fair in p.m.	
Precip. — in		Noon fair	Aftern. fair	
Snowfall/Depth — in / — in		Eve. Fair	Night Fair	

Calms

STATE COLLEGE, Pa. Date

SEP 28 1943

Time
0700

Max. 75	Wind F Calm	Barom. t 78	General Obs. $\infty \infty \infty$ 1215 ∞ ∞ ∞ 1345 ∞ ∞
Min. 39	Vis. km. 9	p 29.20	
Dry 44	Clouds /	p (red.) 29.07	
Wet 42	Gr. & flocc Cloud		
R.H. 85		Morn. Fair	Foren. fair
Precip. — mm/ — in.		Noon fair	Aftern. fair
Snowfall/-Depth — in/ — in.		Eve. fair to clear	Night clear

Calibration

[Faint, illegible handwritten text, likely bleed-through from the reverse side of the page.]

STATE COLLEGE, Pa. Date **SEP 29 1943**

Time
0700

Max. 81	Wind F calm	Barom. t 72	General Obs. 0° 00'	
Min. 44	Vis. km. 8	p 29.24		
Dry 46	Clouds ci /	p (red.) 29.13		
Wet 43.5				
R.H. 82		Morn. fair	Foren. clear	
Precip. — mm / — in.		Noon clear	Aftern. clear	
Snowfall / -Depth — in / — in.		Eve. clear	Night clear	

Capillary

STATE COLLEGE, Pa. Date

SEP 30 1913

Time

0700

Max. 80	Wind F E 1	Barom. t 75	General Obs. $\Delta \infty$ $\begin{matrix} 0800 - \\ 10 - \\ 1500 \end{matrix}$	
Min. 46	Vis. km. 10	p 29.27	2130 Δ - 2200	2200 Δ - 2400
Dry st. 51	Clouds 5	p(red.) 29.15		
Wet 49	Csdens, Ce Cum, Ciril C. flocc			
R.H. 90		Morn. Pthly. Sdy	Foren. Pthly. Sdy	
Precip. — mm / — in.		Noon Pthly. dry to dry	Aftern. dry to Pthly. dry	
Snowfall / -Depth — in / — in.		Eye. (ave min Pthly. dry to)	Night ave min	
A. B.				

