

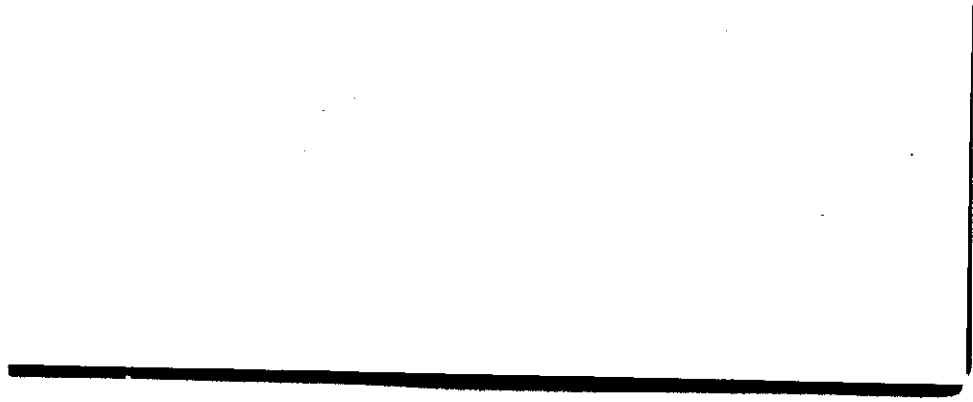
AUG 1 1971

0700 EST

Meteorological Observatory  
University Park, Pa.

Temp.		Wind	Barom.	General Obs.		
Max. 77 °F	Dir. NE	Temp. 69	RW-01130E			
Min. 63 °F	Vel. 1 m.p.h.	Read. 29.080				
Set 64 °F	Char. Var.	Corr. 28.969	dP 63			
			0700	1300	1900	
R. H. 95 %	24 hr. Mov. 73	Sea L. 30.279	Clds. 100% st.	Clds.	Clds.	
Ppn. Liq. .00 in.	Prev. Dir. S	3 hr. Tend. +1.0/	Wx fog	Wx	Wx	
Ppn. Sol. .00 in.	Snow Depth .00 in.	Observer TH	Vis. .75 mi	Vis.	Vis.	

d6 64  
- 6 63



AUG 2 1971

0700 EST

Meteorological Observatory  
University Park, Pa.

Temp.		Wind		Barom.	General Obs.		
Max.	72 °F	Dir.	SW	Temp.	RN--8100E RN-8149E RN--8172E RN82140E		
Min.	64 °F	Vel.	1 m.p.h.	Read.	29.010		
Set	70 °F	Char.	L+V	Corr.	28.890		
R. H.	91 %	24 hr. Mov.	22	Sea L.	30.195		
Ppn.	.11 in.	Prev. Dir.	VARIABLE	3 hr. Tend.	+00.25		
Ppn.	0 in.	Snow Depth	0 in.	Observer	OK		
					0700	1300	1900
					Clds.	Clds.	Clds.
					6/10 SC 3/10 AS		
					Wx	Wx	Wx
					FOG		
					Vis.	Vis.	Vis.
					3		

D 70.0  
W 68.0

AUG 3 1971

0700 EST

Meteorological Observatory  
University Park, Pa.

Temp.		Wind	Barom.	General Obs.		
Max.	80 °F	Dir. SW	Temp. 70	RW 81057E RW-- 81446E		
Min.	69 °F	Vel. 2 m.p.h.	Read. 28.935			
Set	69 °F	Char. L+V	Corr. 28.815	468		
R. H.	100 %	24 hr. Mov. 64	Sea L. 30.120	Clds. 8/10 ST 9/10 FC 1/10 SC	1300	1900
Ppn. Liq.	.18 in.	Prev. Dir. S	3 hr. Tend. +00.1'	Wx RW-- FOG	Wx	Wx
Ppn. Sol.	0 in.	Snow Depth 0 in.	Observer OK	Vis. 3	Vis.	Vis.

19  
13.5



AUG 4 1971

0700 EST

Meteorological Observatory  
University Park, Pa.

General Obs.

Temp.		Wind	Barom.	RW-80837E RB0951E		
Max.	70 °F	Dir. NE	Temp. 70			
Min.	65 °F	Vel. 6 m.p.h.	Read. 28.910			
Set	65 °F	Char. Stdy	Corr. 28.790	0700	1300	1900
R. H.	97 %	24 hr. Mov. 28	Sea L. 30.100	Clds. 4/10sc 4/10st	Clds.	Clds.
Ppn. Liq.	.22 in.	Prev. Dir. VARIABLE	3 hr. Tend. +01.01	Wx RW-- FG	Wx	Wx
Ppn. Sol.	0 in.	Snow Depth 0 in.	Observer OK	Vis. 2	Vis.	Vis.

D 65.0  
W 64.0

10



AUG 5 1971

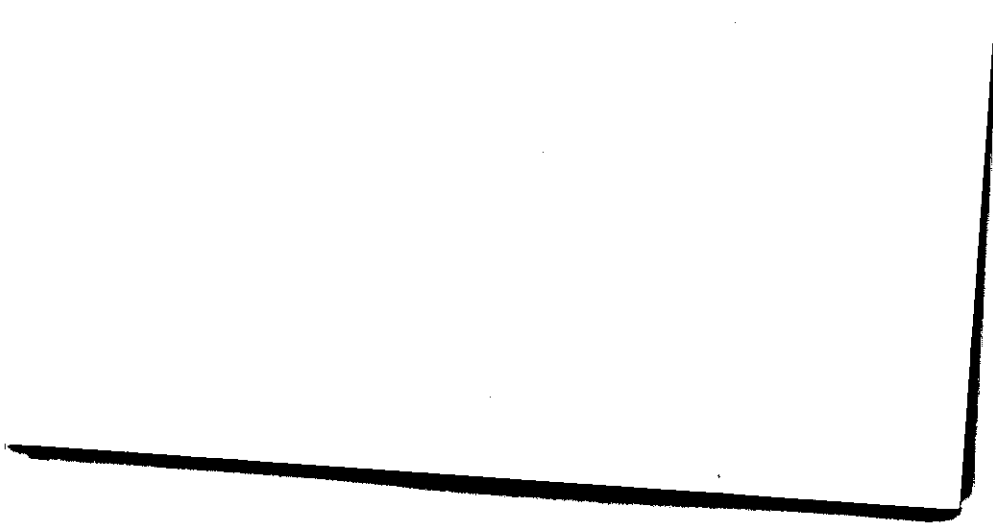
0700 EST

Meteorological Observatory  
University Park, Pa.

General Obs.

Temp.		Wind		Barom.				
Max.	66 °F	Dir.	NE	Temp.	66			
Min.	52 °F	Vel.	2 m.p.h.	Read.	29.040			
Set	53 °F	Char.	L+V	Corr.	28.930	0700	1300	1900
R. H.	100 %	24 hr. Mov.	86	Sea L.	30.275	Clds.		
Ppn.	.30 in.	Prev. Dir.	N	3 hr. Tend.	+02.0'	Wx	FOG	
Ppn.	0 in.	Snow Depth	0 in.	Observer	OK	Vis.	2	

053.0  
054.0



AUG 6 1971

0700 EST

Meteorological Observatory  
University Park, Pa.

Temp.		Wind	Barom.	General Obs.		
Max.	77 °F	Dir. SW	Temp. 70			
Min.	53 °F	Vel. 2 m.p.h.	Read. 28.985			
Set	55 °F	Char. LxV	Corr. 28.865	0700	1300	1900
R. H.	82 %	24 hr. Mov. 41	Sea L. 30.190	Clds. 4/10 CB		
Ppn. Liq.	0 in.	Prev. Dir. NE	3 hr. Tend. -00.12	Wx GR. FOG		
Ppn. Sol.	0 in.	Snow Depth 0 in.	Observer DK	Vis. 6		

D 56.5  
W 53.0

AUG 7 1971

0700 EST

Meteorological Observatory  
University Park, Pa.

Temp.		Wind		Barom.	General Obs.		
Max.	82 °F	Dir.	SW	Temp.	73		
Min.	55 °F	Vel.	5 m.p.h.	Read.	28.930		
Set	61 °F	Char.	Steady	Corr.	28.809 <i>dp 54</i>		
R. H.	77 %	24 hr. Mov.	68	Sea L.	30.119		
Ppn. Liq.	.00 in.	Prev. Dir.	SW	3 hr. Tend.	+.50/		
Ppn. Sol.	.00 in.	Snow Depth	.00 in.	Observer	TH		
				Vis.	13		
					0700	1300	1900
				Clds.	0/10		
				Wx	clear		
				Vis.			

db 61  
wb 57

AUG 8 1971

0700 EST

Meteorological Observatory  
University Park, Pa.  
General Obs.

Temp.		Wind	Barom.		General Obs.		
Max.	83 °F	Dir. SSW	Temp.	76°			
Min.	61 °F	Vel. 2 m.p.h.	Read.	28.930			
Set	66 °F	Char. Steady	Corr.	28.793	0700	1300	1900
R. H.	73 %	24 hr. Mov. 87	Sea L.	30.093	Clds. Clear	Clds.	Clds.
Ppn.	0 in.	Prev. Dir. SSW	3 hr. Tend.	+0.10 ✓	Wx Clear	Wx	Wx
Ppn.	0 in.	Snow Depth 0 in.	Observer R.W.	12	Vis.	Vis.	Vis.

61.0 W  
67.5 D

$$\begin{array}{r} 28.930 \\ \underline{.137} \\ 28.793 \\ \underline{1.300} \\ 30.093 \end{array}$$

$$\begin{array}{r} 77 \\ \underline{66} \\ 2 \overline{)143} \\ \underline{71.5} \end{array}$$



AUG 9 1971

0700 EST

Meteorological Observatory  
University Park, Pa.

Temp.		Wind	Barom.	General Obs.		
Max.	87°F	Dir. WSW	Temp. 76			
Min.	63°F	Vel. 2 m.p.h.	Read. 28.940			
Set	67°F	Char. Stdy	Corr. 28.805 OK	0700	1300	1900
R. H.	80 %	24 hr. Mov. 79	Sea L. 30.100	Clds. CLEAR	Clds.	Clds.
Ppn. Lq.	0 in.	Prev. Dir. SW	3 hr. Tend. +00.61	Wx HAZE	Wx	Wx
Ppn. Sol.	0 in.	Snow Depth 0 in.	Observer OK	Vis. 6	Vis.	Vis.

D 68.0

W 62.0

AUG 10 1971

0700 EST

Meteorological Observatory  
University Park, Pa.

Temp.		Wind	Barom.	General Obs.		
Max. 85°F		Dir. SW	Temp. 70	TRW--B0345E(8-11) TRW-B0415E(8-11) RW B0510E(8-11)		
Min. 64°F		Vel. 1 m.p.h.	Read. 28.860			
Set 65°F		Char. L+V	Corr. 28.740	0700 1300 1900		
R. H. 90%		24 hr. Mov. 79	Sea L. 30.035	Clds. None 1/1001	Clds.	Clds.
Ppn. Liq. 0 in.		Prev. Dir. SW	3 hr. Tend. +00.15	Wx HAZE FOG	Wx	Wx
Ppn. Sol. 0 in.		Snow Depth 0 in.	Observer DK	Vis. 2	Vis.	Vis.

D 67.0  
W 63.5



AUG 11 1971

0700 EST

Meteorological Observatory  
University Park, Pa.

Temp.		Wind	Barom.	General Obs.		
Max.	85 °F	Dir. SW	Temp. 72			
Min.	65 °F	Vel. 6 m.p.h.	Read. 28.620			
Set	71 °F	Char. Stdy	Corr. 28.495	0700	1300	1900
R. H.	89 %	24 hr. Mov. 113	Sea L. 29.770	Clds. <i>thick</i> <i>store</i> <i>bls</i>	Clds.	Clds.
Ppn. Liq.	.08 in.	Prev. Dir. SW	3 hr. Tend. +00.15	Wx FOG	Wx	Wx
Ppn. Sol.	0 in.	Snow Depth 0 in.	Observer DK	Vis. 1	Vis.	Vis.

D 70.5

W 68.0

---

AUG 1 2 1971

0700 EST

Meteorological Observatory  
University Park, Pa.

Temp.		Wind	Barom.	General Obs.		
Max.	81 °F	Dir. N	Temp. 80			
Min.	53 °F	Vel. 1 m.p.h.	Read. 28.875			
Set	58 °F	Char. L*V	Corr. 28.730 <del>28.730</del>			
R. H.	71 %	24 hr. Mov. 113	Sea L. 30.015	0700 Clds. CLEAR	1300 Clds.	1900 Clds.
Ppn. Liq.	0 in.	Prev. Dir. SW	3 hr. Tend. +02.2'	Wx —	Wx	Wx
Ppn. Sol.	0 in.	Snow Depth 0 in.	Observer OK	Vis. 15+	Vis.	Vis.

D 58.0

W 53.0





D 57.0

W 53.0

AUG 14 1971

0700 EST

Meteorological Observatory  
University Park, Pa.

Temp.		Wind	Barom.	General Obs.		
Max.	82 °F	Dir. —	Temp. 73			
Min.	55 °F	Vel. 0 m.p.h.	Read. 28.940			
Set	61 °F	Char. Calm	Corr. 28.820	dp 56		
R. H.	85 %	24 hr. Mov. 32	Sea L. 30.130	0700 Clds. 0/10	1300 Clds.	1900 Clds.
Ppn. Liq.	.00 in.	Prev. Dir. SW	3 hr. Tend. +.5/	Wx 6r. Fog	Wx	Wx
Ppn. Sol.	.00 in.	Snow Depth .00 in.	Observer TH	Vis. 5	Vis.	Vis.

w 6 5 8  
d b 6 1

AUG 15 1971

0700 EST

Meteorological Observatory  
University Park, Pa.

Temp.		Wind	Barom.	General Obs.		
Max. 85 °F	Dir. SW	Temp. 71	TRW-60840E			
Min. 68 °F	Vel. 1 m.p.h.	Read. 28.900	TTW-11535E RW--01545E END 1830E			
Set 66 °F	Char. stdy	Corr. 28.784	dp 58			
R. H. 85 %	24 hr. Mov. 51	Sea L. 30.084	Clds. 0700 4/1000	1300	1900	Clds.
Ppn. Liq. .00 in.	Prev. Dir. SW	3 hr. Tend. +1.5 ✓	Wx Fog	Wx	Wx	Wx
Ppn. Sol. .00 in.	Snow Depth .00 in.	Observer TH	Vis. 3	Vis.	Vis.	Vis.

wb 61  
db 67

AUG 16 1971

0700 EST

Meteorological Observatory  
University Park, Pa.

Temp.		Wind	Barom.	General Obs.		
Max.	77 °F	Dir. NE	Temp. 76			
Min.	53 °F	Vel. 2 m.p.h.	Read. 29.010			
Set	56 °F	Char. Stdy	Corr. 28.875 <del>28.875</del>			
R. H.	86 %	24 hr. Mov. 85	Sea L. 30.200	0700 Clds. 9/10dc	1300 Clds.	1900 Clds.
Ppn. Liq.	.06 in.	Prev. Dir. NE	3 hr. Tend. +0.2'	Wx Mist Fog	Wx	Wx
Ppn. Sol.	0 in.	Snow Depth 0 in.	Observer DK	Vis. 6	Vis.	Vis.

D 59.0

W 55.0



AUG 17 1971

0700 EST

Meteorological Observatory  
University Park, Pa.

Temp.		Wind	Barom.	General Obs.		
Max.	80 °F	Dir. —	Temp. 78			
Min.	52 °F	Vel. 0 m.p.h.	Read. 29.020			
Set	57 °F	Char. CALM	Corr. 28.875	0700	1300	1900
R. H.	90 %	24 hr. Mov. 35	Sea L. 30.195	Clds. CLEAR	Clds.	Clds.
Ppn.	0 in.	Prev. Dir. VARIABLE	3 hr. Tend. +00.71	Wx FOG	Wx	Wx
Ppn.	0 in.	Snow Depth 0 in.	Observer OK	Vis. 2	Vis.	Vis.

D 57.5

W 55.5

AUG 18 1971

0700 EST

Meteorological Observatory  
University Park, Pa.

Temp.		Wind	Barom.	General Obs.		
Max.	84°F	Dir. —	Temp. 82	RW--80840E (8-19)		
Min.	55°F	Vel. 0 m.p.h.	Read. 28.950			
Set	59°F	Char. CALM	Corr. 28.800	455		
R. H.	88%	24 hr. Mov. 31	Sea L. 30.110	0700	1300	1900
Ppn.	0 in.	Prev. Dir. S	3 hr. Tend. +00.81	Clds. 1/10 ci	Clds.	Clds.
Ppn.	0 in.	Snow Depth 0 in.	Observer DK	Wx HAZE & FOG	Wx	Wx
				Vis. 5	Vis.	Vis.

D 60.5

W 57.0

AUG 1 9 1971

0700 EST

Meteorological Observatory  
University Park, Pa.

Temp.		Wind	Barom.	General Obs.		
Max.	85°F	Dir. W	Temp. 74			
Min.	59°F	Vel. 1 m.p.h.	Read. 28.880			
Set	66°F	Char. L+V	Corr. 28.750			
R. H.	91 %	24 hr. Mov. 25	Sea L. 30.050	Clds. 2/100 2/100 2/100	1300	1900
Ppn.	T in.	Prev. Dir. S	3 hr. Tend. +01.01	Wx HAZE & FOG	Wx	Wx
Ppn.	0 in.	Snow Depth 0 in.	Observer DK	Vis. 1	Vis.	Vis.

D 68.0  
W 64.5

AUG 20 1971

0700 EST

Meteorological Observatory  
University Park, Pa.

Temp.		Wind	Barom.	General Obs.		
Max. 81 °F		Dir. SW	Temp. 72	RW--807/6E TRW + 82810E		
Min. 65 °F		Vel. 5 m.p.h.	Read. 28.820			
Set 68 °F		Char. Stdy	Corr. 28.695			
R. H. 89 %		24 hr. Mov. 126	Sea L. 29.990	0700 1990 ST	1300	1900
Ppn. 0	Liq. in.	Prev. Dir. SW	3 hr. Tend. 00.0-	Wx FOG HAZE	Wx	Wx
Ppn. 0	Sol. in.	Snow Depth 0 in.	Observer OK	Vis. 1	Vis.	Vis.

D 69.5  
W 66.0





AUG 21 1971

0700 EST

Meteorological Observatory  
University Park, Pa.

Temp.		Wind	Barom.	General Obs.		
Max.	79 °F	Dir. W	Temp. 70	TRW-- B0725E		
Min.	65 °F	Vel. 3 m.p.h.	Read. 28.780			
Set	66 °F	Char. Variable	Corr. 28.659	DP64		
R. H.	92 %	24 hr. Mov. 119	Sea L. 29.949	Clds. 10/10 S 3/10 N	1300 Clds.	1900 Clds.
Ppn. Lq.	.84 in.	Prev. Dir. SW	3 hr. Tend. +0.15/	Wx Haze Fog	Wx	Wx
Ppn. Sol.	0 in.	Snow Depth 0 in.	Observer R.W.	Vis. 2	Vis.	Vis.

\_\_\_\_\_

AUG 22 1971

0700 EST

Meteorological Observatory  
University Park, Pa.

Temp.		Wind	Barom.	General Obs.		
Max.	80 °F	Dir. SW	Temp. 70	RW--8230E RW 80035E (S-23)		
Min.	63 °F	Vel. 1 m.p.h.	Read. 28.710			
Set	65 °F	Char. Variable	Corr. 28.589			
R. H.	88 %	24 hr. Mov. 139	Sea L. 29.889	DPLI 0700	1300	1900
Ppn.	0 in.	Prev. Dir. SW	3 hr. Tend. 0.00V	Clds. 10/10 St	Clds.	Clds.
		Snow Depth 0 in.	Observer R.W.	Wx Haze	Wx	Wx
				Vis. 3	Vis.	Vis.

65D  
62.5W

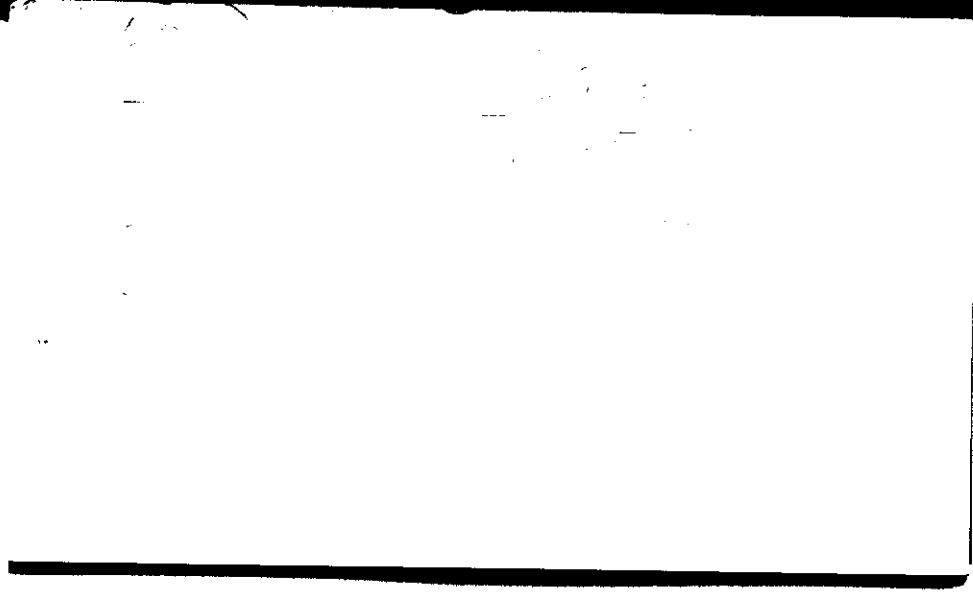
<del>28.710</del>	28.710
<del>- 1.105</del>	<u>.121</u>
<del>28.605</del>	28.589
<del>1.300</del>	<u>1.300</u>
<del>29.905</del>	28.889

AUG 23 1971

0700 EST

Meteorological Observatory  
University Park, Pa.

Temp.		Wind	Barom.	General Obs.		
Max.	80 °F	Dir. S	Temp. 77			
Min.	61 °F	Vel. 9 m.p.h.	Read. 28.640			
Set	62 °F	Char. Variable	Corr. 28.502	DP54		
R. H.	75 %	24 hr. Mov. 116	Sea L. 29.792	0700	1300	1900
Ppn.	Liq. .07 in.	Prev. Dir. S	3 hr. Tend. +0.25/	Clds. 5710 Ac	Clds.	Clds.
Ppn.	Sol. 0 in.	Snow Depth 0 in.	Observer R.W.	Wx clear cool	Wx	Wx
				Vis. 10	Vis.	Vis.



AUG 24 1971

0700 EST

Meteorological Observatory  
University Park, Pa.

Temp.		Wind	Barom.	General Obs.		
Max.	73 °F	Dir. W	Temp. 78			
Min.	47 °F	Vel. .5 m.p.h.	Read. 28.930			
Set	51 °F	Char. Variable	Corr. 28.787	DP42 0700	1300	1900
R. H.	70 %	24 hr. Mov. 97	Sea L. 30.107	Clds. Clear	Clds.	Clds.
Ppn.	Liq. 0 in.	Prev. Dir. W	3 hr. Tend. +0.18/	Wx Haze	Wx	Wx
Ppn.	Sol. 0 in.	Snow Depth 0 in.	Observer R.W.	Vis. 15	Vis.	Vis.

51  
46.5

$$\begin{array}{r} 28.930 \\ .143 \\ \hline 28.787 \\ 1.320 \\ \hline 30.107 \end{array}$$



AUG 25 1971

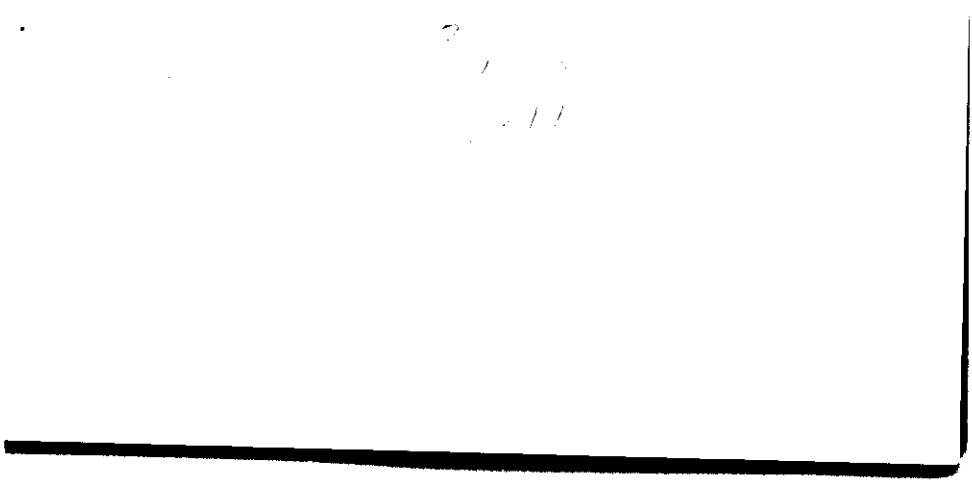
0700 EST

Meteorological Observatory  
University Park, Pa.

Temp.		Wind	Barom.	General Obs.		
Max.	72 °F	Dir. N	Temp. 70	RW--B1926 RW--B0415E (8-26)		
Min.	47 °F	Vel. 0 m.p.h.	Read. 28.910			
Set	51 °F	Char. Calm	Corr. 28.788	0700	1300	1900
R. H.	86 %	24 hr. Mov. 56	Sea L. 30.118	Clds. 9/10 Ci 3/10 Ac	Clds.	Clds.
Ppn. Lq.	0 in.	Prev. Dir. SW	3 hr. Tend. +0.201	Wx Haze Fog	Wx	Wx
Ppn. Sol.	0 in.	Snow Depth 0 in.	Observer R.W.	Vis. 7	Vis.	Vis.

1000  
1000

1000  
1000  
1000



AUG 26 1971

0700 EST

Meteorological Observatory  
University Park, Pa.

Temp.		Wind	Barom.	General Obs.		
Max.	79 °F	Dir. E	Temp. 73			
Min.	51 °F	Vel. 3 m.p.h.	Read. 28.880			
Set	66 °F	Char. Variable	Corr. 28.754	DPG		
R. H.	85 %	24 hr. Mov. 53	Sea L. 30.054	0700 Clds. 1/10 CI	1300 Clds.	1900 Clds.
Ppn.	T in.	Prev. Dir. S	3 hr. Tend. + 0.15/	Wx Haze Fog	Wx	Wx
Ppn.	0 in.	Snow Depth 0 in.	Observer R.W.	Vis. 5	Vis.	Vis.



AUG 27 1971

0700 EST

Meteorological Observatory  
University Park, Pa.

Temp.		Wind	Barom.	General Obs.		
Max.	80 °F	Dir. SE	Temp. 70	RW-81610E RW-81700E RWB0220E(8-28)		
Min.	64 °F	Vel. 5 m.p.h.	Read. 28.830			
Set	64 °F	Char. Variable	Corr. 28.709			
R. H.	90 %	24 hr. Mov. 109	Sea L. 29.999	DP61 0700	1300	1900
Ppn.	Liq. 0 in.	Prev. Dir. S	3 hr. Tend. 0.00L	Clds. 10/10 St	Clds.	Clds.
Ppn.	Sol. 0 in.	Snow Depth 0 in.	Observer R.W.	Wx Haze	Wx	Wx
				Vis. 4	Vis.	Vis.

675

675

675

675

675

675

675

675



**AUG 28 1971**

0700 EST

Meteorological Observatory  
University Park, Pa.

Temp.		Wind	Barom.	General Obs.		
Max.	68 °F	Dir. W	Temp. 73			
Min.	62 °F	Vel. 9 m.p.h.	Read. 28.750			
Set	63 °F	Char. Steady	Corr. 28.629	dp 59		
R. H.	87 %	24 hr. Mov. 76	Sea L. 29.929	0700 Clds. 2/10 ct.	1300 Clds.	1900 Clds.
Ppn. Liq.	.31 in.	Prev. Dir. NW	3 hr. Tend. +1.25 ✓	Wx Fog	Wx	Wx
Ppn. Sol.	.00 in.	Snow Depth .00 in.	Observer TH	Vis. 2	Vis.	Vis.

db 64  
wb 61



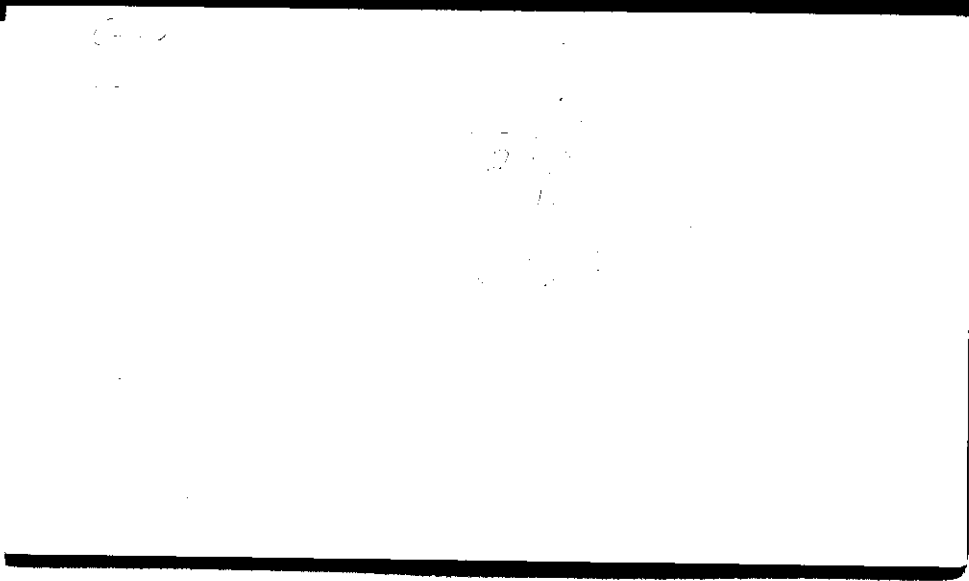


AUG 29 1971

0700 EST

Meteorological Observatory  
University Park, Pa.

Temp.		Wind	Barom.	General Obs.		
Max.	72 °F	Dir. W	Temp. 69			
Min.	61 °F	Vel. 1 m.p.h.	Read. 29.000			
Set	63 °F	Char. Variable	Corr. 28881	DP 58		
				0700	1300	1900
R. H.	84 %	24 hr. Mov. 131	Sea L. 30.201	Clds. 9/10 As	Clds.	Clds.
Ppn.	0 in.	Prev. Dir. SW	3 hr. Tend. +0.201	Wx Haze	Wx	Wx
Ppn.	0 in.	Snow Depth 0 in.	Observer R.W.	Vis. 3	Vis.	Vis.

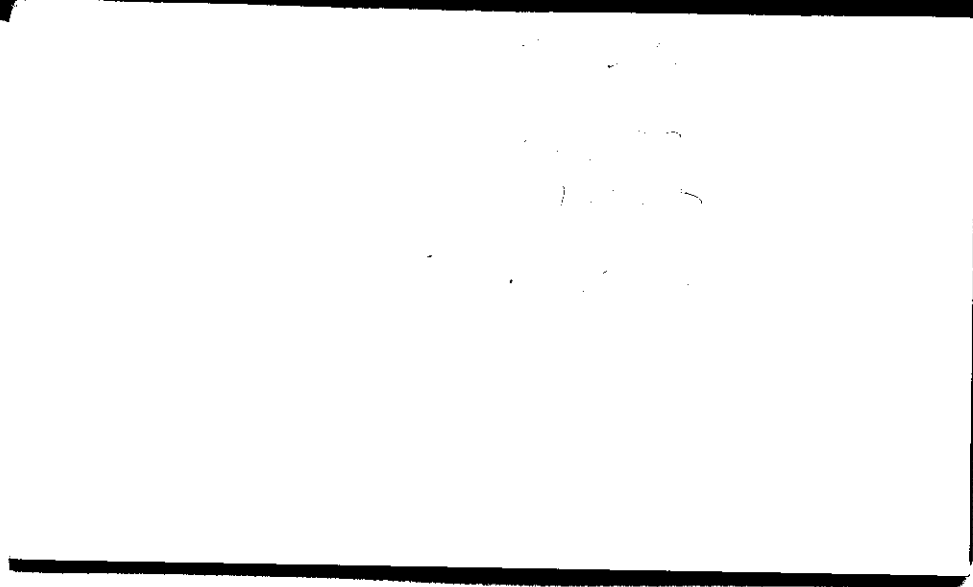


AUG 30 1971

0700 EST

Meteorological Observatory  
University Park, Pa.

Temp.		Wind	Barom.	General Obs.		
Max.	81 °F	Dir. S	Temp. 70			
Min.	57 °F	Vel. 1 m.p.h.	Read. 29.010			
Set	59 °F	Char. Steady	Corr. 28.988	DP57		
R. H.	92 %	24 hr. Mov. 55	Sea L. 30.308	0700 Clds. Clear	1300 Clds.	1900 Clds.
Ppn.	Liq. 0 in.	Prev. Dir. SW	3 hr. Tend. +0.10/	Wx HAZE Fog	Wx	Wx
Ppn.	Sol. 0 in.	Snow Depth 0 in.	Observer R.W.	Vis. 2	Vis.	Vis.



AUG 31 1971

0700 EST

Meteorological Observatory  
University Park, Pa.

Temp.		Wind		Barom.		General Obs.		
Max.	82 °F	Dir.	NE	Temp.	70			
Min.	58 °F	Vel.	2 m.p.h.	Read.	29.010			
Set	61 °F	Char.	stdy	Corr.	28.890 <del>28.87</del>			
R. H.	89 %	24 hr. Mov.	101	Sea L.	30.205	0700	1300	1900
						Clds.	Clds.	Clds.
Ppn.	0 in.	Prev. Dir.	W	3 hr. Tend.	+01.01	Wx	Wx	Wx
						HARE		
Ppn.	0 in.	Snow Depth	0 in.	Observer	DK	Vis.	Vis.	Vis.
						H		

D 61.5  
W 59.0