

STATE COLLEGE, Pa. Date

DEC 1 1941

Time
8710

Max. 53.9	Wind F NE 2	Barom. t 74	General Obs. 10°/ 1120-1200
Min. 34.8	Vis. km. 24	P 29.08	●° 1340-1420
Dry 35.2	Clouds 10	p(red.) 28.96	
Wet	AC		
R.H. 80		Morn. overcast Ac	Foren. As
Precip. — mm/ — in.		Noon As rain	Aftern. As
Snowfall/-Depth — in/ — in.		Eve. As	Night As

Maxima (1)

-3.0 3.0

-3

STATE COLLEGE, Pa. Date **DEC 2 1947**

Time
0700

Max. 42.4	Wind F W 3	Barom. t 74.0	General Obs. ∞° 0630 ≡° 1800-2400
Min. 34.7	Vis. km. 8	P 28.99	101° 0110-0600
Dry 36.8	Clouds 8	p (red.) 28.87	●°- 1040-1520
Wet	Sc		●°- 1815-1900
R.H. 98		Morn cloudy Sc	Foren. As overcast
Precip. 2.4 mm/0.09 in.		Noon As - overcast	Aftern. As overcast
Snowfall/-Depth — in/ — in.		Eve. st	Night st

Milan (2) $\bar{8} + 7 = 15$ $- 0.5 \cdot 7.5$
7
-8

STATE COLLEGE, Pa. Date DEC 3 1941

Time
0700

Max. 42.6	Wind F W 1	Barom. t 75.0	General Obs. ≡ ¹⁻⁰ 0000-0800
Min. 36.1	Vis. km. 2	P 29.09	≡ ⁰⁻² 1800-2400
Dry 39.6	Clouds 10	p (red.) 28.97	
Wet	at		
R.H. 98		Morn. overcast at	Foren. cloudy
Precip. 5.5 mm / 0.22 in.		Noon partly cloudy	Aftern. fair (ce) floc
Snowfall / -Depth — in / — in.		Eve.	Night

Matryana (2) ⁺¹ -5 + 6 11 +0.5 5.5
6
-5

STATE COLLEGE, Pa. Date **DEC 4 1941**

Time
0700

Max. 56.8	Wind F calm 0	Barom. t 76	General Obs. 2-0	
Min. 35.0	Vis. km. $\frac{1}{2}$	29.06	- 0000-1000	
Dry 35.8	Clouds sky obscured	p (red.) 28.94	0 ⁰⁻¹ 2150-2400	
Wet				
R.H. 100		Morn. foggy. sky obscured	Foren.	
Precip. — mm / — in.		Noon	Aftern.	
Snowfall/-Depth — in / — in		Eve. at overcast	Night at rain	

STATE COLLEGE, Pa. Date **DEC 5 1941**

Time
0700

Max. 59.0	Wind F Calm	Barom. t 76	General Obs. ● ⁰⁻¹ 0000-0845 ● ⁰ 1030 ≡ ⁰ 0000
Min. 35.1	Vis. km. 1.5	P 28.64	
Dry 54.4	Clouds 10	p(red.) 28.52	
Wet	NS		
R.H. 99	Morn. overcast rain fog		Foren. Sc
Precip. 12.0mm / 0.47 in.	Noon Sc		Aftern. as
Snowfall - Depth — in. — in.	Eve. as, cs fil		Night as

Marseilles (10) ⁺¹⁸ -12 + 30 42 +1.8 4.2 ✓

-1
-2
8
2
0
1
9
-9
9
1

STATE COLLEGE, Pa. Date

DEC 6 1941

Time

Max. 58.6	Wind F WNW 7	Barom. t 72	General Obs. 1400 * flakes - 1700 2030 * flurries - 2230
Min. 39.7	Vis. km. 48	p 28.78	
Dry 39.7	Clouds sc 9	p (red.) 28.67	
Wet			
R.H. 47		Morn. cloudy Sc	Foren. cloudy
Precip. mm/0.02 in		Noon cloudy	Aftern. cloudy to overcast *
Snowfall/Depth — in/ — in		Eve. overcast *	Night overcast to pty cldy *

Malabar (4) ⁻⁵ -13 +8 21 -1.2 5.2 ✓
8
-3
-6
-4

STATE COLLEGE, Pa. Date **DEC 7 1941**

Time
07:00

Max. 40.0	Wind F NW 6	Barom. t 69	General Obs. ☉ 2100-2400
Min. 23.3	Vis. km. 90	P. 28.99	
Dry 23.3	Clouds 1	o (red.) 28.88	
Wet	fc		
R.H. 54	Morn. fair	Foren. fair	
Precip. T mm / T in.	Noon fair	Aftern. ci fil, ci flocc	
Snowfall / -Depth — in / — in.	Eve. fair	Night cs ☉ 2100	

Manila (56) -149 +108 257 -0.7 4.6		
0	7	-1
-9	-2	-9
+6	-3	-1
+4	-3	4
+7	-7	-6
-3	-1	3
+1	-9	4
-9	0	1
9	-5	9
9	3	-8
0	-9	-8
-5	1	-1
3	-6	-9
2	8	-5
-2	1	5
3	6	
-8	1	
-9	-5	
2	-2	

STATE COLLEGE, Pa. Date DEC 8 1941

Time

Max. 34.9	Wind F calm 0	Barom. t 70	General Obs. *° 1300-1325: 1620-1635
Min. 22.8	Vis. km. 9	p 28.62	*° 1750-2400
Dry 26.0	Clouds 10	p (red.) 28.51	
Wet	Ac		
R.H. 81		Morn. overcast	Foren. partly cloudy
Precip. — mm/ — in.		Noon overcast	Aftern. cloudy
Snowfall/-Depth — in/ — in.		Eve. partly cloudy	Night partly cloudy to cloudy

Malaga (4) ⁻⁷ -9 +2 11 -1.8 2.8

-8

2

0

-1

STATE COLLEGE, Pa. Date

DEC 9 1941

Time
0700

Max. 39.4	Wind F W 5	Barom. t 66	General Obs.: *° 0000-1130
Min. 25.8	Vis. km. 7	P 28.61	
Dry 31.0	Clouds 10	D (red.) 28.54	
Wet	st		
R.H. 85		Morn. overcast snow	Foren. overcast snow
Precip. mm/ 0.02 in		Noon cloudy, overcast	Aftern. cloudy, overcast
Snowfall/ -Depth in/ in		Eve. " "	Night " "

Lisbon(3) ⁻¹ -5 +4. 9 ^{change} -0.3 3.0 c

$-\frac{3}{5}$
1

STATE COLLEGE, Pa. Date

DEC 10 1941

Time
0700

Max. 32.0	Wind F W 5	Barom. t 64	General Obs. ∞° 0630
Min. 26.7	Vis. km. 8	P 28.81	*° 1155-1210
Dry 31.8	Clouds 10	h (red.) 28.72	1430-1530
Wet	cc ci pol ci neb.		
R.H. 65	fs	Morn. overcast	Foren. overcast
Precip. mm/ T in.		cc ci pol ci neb	Aftern. overcast with breaks ^{snw} flurries
Snowfall, -Depth in/ in.		Eve. overcast	Night overcast

Lund(8) ⁻⁴ -9 +5 14 -0.5 1.8

13
10
1
-2
3
1

STATE COLLEGE, Pa. Date DEC 11 1941

Time
0700

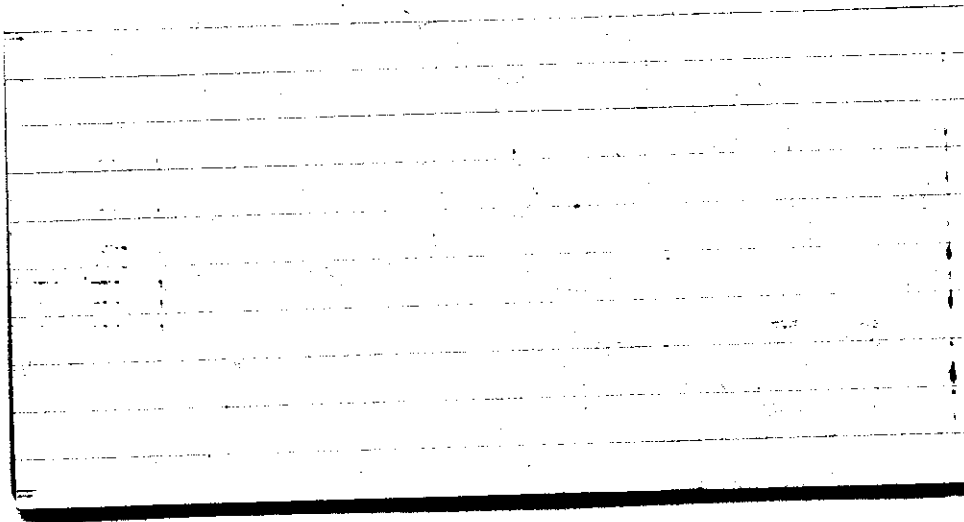
Max. 33.9	Wind F WNW 4	Barom. t 60	General Obs. * 0840-0850 * 1220-1240
Min. 18.1	Vis. km. 10	P 29.19	
Dry 18.6	Clouds 2	p (red.) 29.11	
Wet	.sc		
R.H. 76		Morn. fair	Foren. partly cloudy (sc)
Precip. mm/ T in.		Noon cloudy (sc)	Aftern. partly cloudy
Snowfall/-Depth — in/ — in.		Eve. partly cloudy	Night clear

Royola (2) ⁺⁷ -1 +8 9 +3.5 4.5
-1
8

STATE COLLEGE, Pa. Date **DEC 12 1941**

Time
0700

Max. 28.1	Wind F calm 0	Barom. t 63	General Obs. * 1545-1550 ▽	
Min. 18.1	Vis. km. 38	p 29.28		
Dry 20.9	Clouds 10	p(red) 29.19		
Wet	ac			
R.H. 71		Morn. overcast	Foren. overcast (as)	
Precip. mm/ T in.		Noon overcast	Aftern. overcast	
Snowfall/-Depth — in/ — in.		Eve. "	Night	

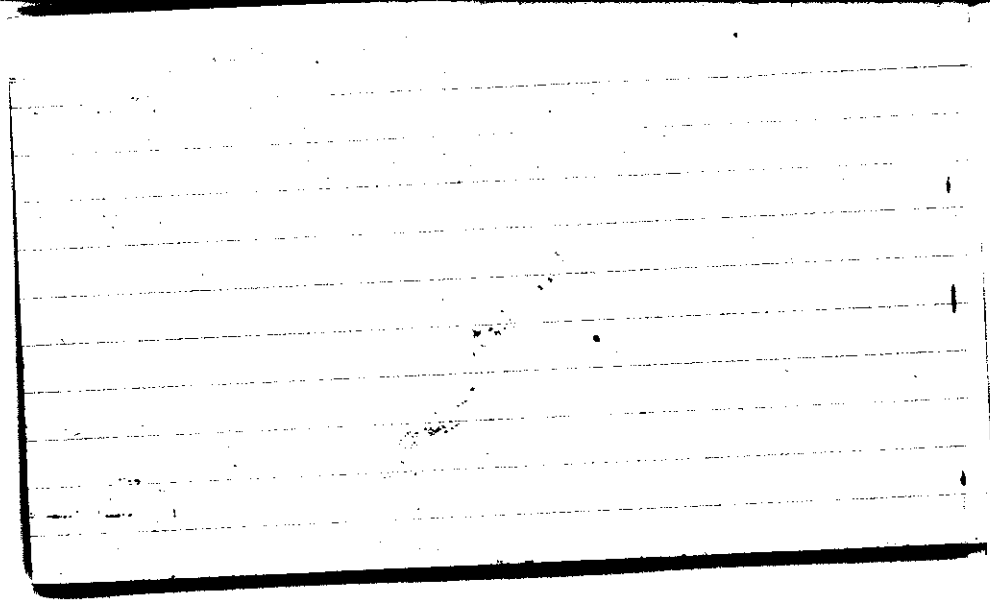


STATE COLLEGE, Pa. Date **DEC 13 1941**


Time
0700

Max. 27.9	Wind F SE 3	Barom. t 65	General Obs. 0 - 0:30 •° 300 • ▲ - 14:00 1445 - 19:25 ▲●●
Min. 20.3	Vis. km. 10	p 28.92	
Dry	Clouds 10	p (red.) 28.82	
Wet 25.0	as sc		
R.H. 95		Morn. sleet overcast	Foren. sleet
Precip. 1.5 mm / 0.06 in.		Noon sleet + rain	Aftern. overcast
Snowfall / -Depth — in / — in		Eve. overcast, sleet, rain.	Night overcast

no sunshine



STATE COLLEGE, Pa. Date **DEC 14 1941**Time
0700

Max. 35.8	Wind F NW 5	Barom. t 63	General Obs. △ ^{1.5} * 8h/*°/-24h
Min. 25.0	Vis. km. 12	p 28.63	18h  40 mph
Dry 32.5	Clouds 10	p(red.) 28.54	
Wet	SC St		
R.H. 65		Morn. overcast	Foren. overcast *
Precip. 21.3 mm / .84 in.		Noon ⊕/⊙ 1*°/	Aftern. ⊙/1*°/
Snowfall/-Depth — in/— in.		Eve. cloudy/*°/	Night cloudy to overcast /#

STATE COLLEGE, Pa. Date

DEC 15 1941

Time
0700

Max. 33	Wind F WNN 5	Barom. t 59	General Obs. * 0.5 0000 /*'-0900
Min. 22*	Vis. km. 12	p 28.87	
Dry 23	Clouds 10	p(red.) 28.79	
Wet	SC ST		
R.H. 64		Morn. overcast * overcast later cloudy	Foren. cloudy to partly cloudy
Precip. Tr mm/Tr in.		Noon cloudy to overcast	Aftern. overcast
Snowfall/-Depth - in/- in.		Eve. overcast to cloudy	Night cloudy

Jena (11)		-37 + 2	39	-3.2	3.5
0	9				
-5	0				(H)
-1	-2				
-8	-2				-4
-6					+9
0					+5
-4					
-2					13
2					+1.2
-3					3.2
-8					

STATE COLLEGE, Pa. Date DEC 16 1941

Time
0705

Max. 33	Wind F WSW 3	Barom. t 62	General Obs. <input checked="" type="checkbox"/> T 15:45 precip. started
Min. 22	Vis. km. 15	p 28.84	
Dry 33	Clouds 10	p(red.) 28.75	
Wet	as		
R.H. 49		Morn. overcast	Foren. cloudy to fair
Precip. T mm/ in.		Noon fair	Aftern. fair to cloudy
Snowfall/-Depth — in/— in.		Eve. overcast	Night overcast

(8)

[Japan]		-0	+42	+5.2	5.2
Miyazawa	Sumoto	7	3	Kayaya	Kobe
9				9	2
					8
					-6
					+4
				Marcho	-2
				4	10
					-1.0
Hokkaido	Nagasaki				5.0
1	4				

STATE COLLEGE, Pa. Date **DEC 17 1941**Time
0700

Max. 46	Wind F WNN 4	Barom. t 69	General Obs. <input checked="" type="checkbox"/> T
Min. 33	Vis. km. 15	p 28.84	
Dry 37	Clouds 10	p (red.) 28.75	
Wet	sc		
R.H. 76		Morn. overcast	Foren. overcast
Precip. mm/ in.		Noon (sc) overcast with breaks	Aftern. cloudy to partly cloudy
Snowfall/-Depth in/ in.		Eve. fair	Night fair

Irigat

(6)

0
- 2
- 2
7

-4

+9

+5

13

+0.8

2.2

STATE COLLEGE, Pa. Date DEC 18 1941

Time
0700

Max.	Wind F	Barom.	General Obs.
40	W 1	t 67	L' <input checked="" type="checkbox"/> T 700 ∞
Min. 28	Vis. km. 10	p 28.81	0830 ☉
Dry 30	Clouds 4 ci flocc	p (red.) 28.71	1200 ☉ -13h
Wet	ci fil		
R.H. 96	as	Morn. partly cloudy	Foren. fair to partly cloudy
Precip. — in	— in	Noon cloudy	Aftern. cloudy to overcast
Snowfall/—Depth — in/ — in	— in	Eve. cloudy to pty cldy	Night fair

	Innsbruck (17)	-23	+31	54	+05	3.2
-3	2					(3)
-7	7					
6	-1					
-2						-1
0						
-3						+7
4						
2						+6
8						
0						8
1						
2						+2.0
6						
-1						2.7
-5						
1						

STATE COLLEGE, Pa. Date DEC 19 1941

Time
0705

Max. 49	Wind F WSW 2	Barom. t 68	General Obs. 0700 00' W' 11 ^h ☉
Min. 30	Vis. km. 10	p 28.88	14 ^h ☉ - 15 ^h
Dry 32	Clouds 1 ci pe ce	p (red.) 28.78	
Wet	as		18.20 0 ⁰⁰ ' - 22 ^h
R.H. 95		Morn. fair to partly cloudy	Foren. fair
Precip. — mm/ — in.		Noon fair	Aftern. partly cloudy to cloudy
Snowfall/-Depth — in/ — in.		Eve. cloudy to overcast	Night (rain) overcast rain

#1 *university*

3

4

1

3

(5)

-12

+7

-5

19


-1.0

3.8

STATE COLLEGE, Pa. Date

DEC 20 1941

Time
0700

Max. 48	Wind F WNW 5	Barom. t 65	General Obs. 0500 / *° / —
Min. 31	Vis. km. 15	p 28.73	0800  50 mph
Dry 35	Clouds 10	p(red.) 28.64	
Wet	NS SC		
R.H. 60		Morn. <i>snow/furries</i> overcast to cloudy	Foren. overcast * <i>flakes</i>
Precip. 2.1 mm / 0.08 in.		Noon overcast	Aftern. overcast to cloudy
Snowfall/-Depth — in / — in.		Eve.	Night

STATE COLLEGE, Pa. Date DEC 21 1941

Time 0705

Max. 25	Wind F NE 1	Barom. t 65	General Obs. 7 ^h L ²
Min. 13	Vis. km. 50	p 29.29	
Dry 13	Clouds < 1	p(red.) 29.19	
Wet	f. cu		
R.H. 83		Morn. clear	Foren. clear
Precip. T mm/T in.		Noon "	Aftern. ac cirrus fair
Snowfall/-Depth — in/ — in.		Eve fair	Night fair

Hohenheim (9) ^{+ 16} 2.4 32 + 4.8 3.6

5
1
3
4
9
-5
1
-3

STATE COLLEGE, Pa. Date **DEC 22 1941**

Time
0700

Max. 29.0	Wind F calm 0	Barom. t 72	General Obs. L ^o - 0630
Min. 12.6	Vis. km. 7	P. 29.27	
Dry 18.6	Clouds 8	p(red.) 29.10	
Wet	ci densa ci gel cc		
R.H. 91		Morn. ci flocc fair ci neb	Foren. ac cloudy as
Precip. — mm/ — in.		Noon ac cloudy ci fil	Aftern. cloudy ac ci fil
Snowfall/—Depth — in/ — in.		Eve. "	Night "

[Hong Kong] (4) -10 +1 12 -2.5 3.0
-6 6
-1 -4
-5
0
-4
+6
+2
10
+1.0
5.0

STATE COLLEGE, Pa. Date

DEC 23 1941

Time
0701

Max. 38.3	Wind F calm 0	Barom. t 71	General Obs. 20° 0630 7h ~ -1000
Min. 18.5	Vis. km. 5	p 28.95	8° 0° - 24
Dry 28.6	Clouds 10 SC	p (red.) 28.84	
Wet			
R.H. 84		Morn. overcast Sc ^{rain} gray	Foren. overcast rain
Precip. — mm/ — in.		Noon overcast rain	Aftern. "
Snowfall/-Depth in/ in.		Eve. "	Night "

Helwan (7) -39 +5 44 -4.9 6.3
-9
-4
5
-5
-3
-9
-9

-2

+2

0

4

0.0

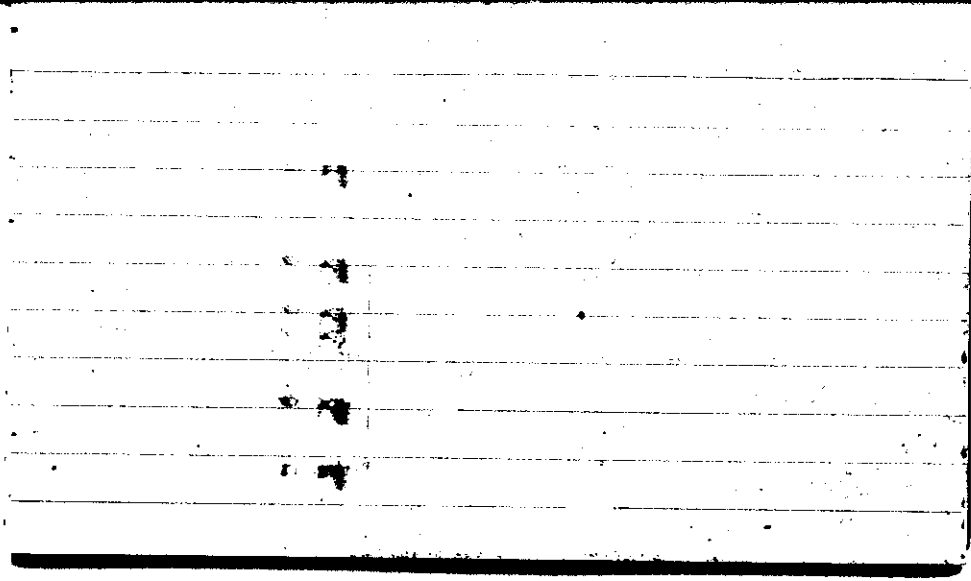
2.0

STATE COLLEGE, Pa. Date **DEC 24 1941**

Time
0700

Max. 55.5	Wind F W 4	Barom. t 71	General Obs. ● 0000 2210 ● 1230, 1500, 1520-1530, 1700-1715, 2045-2055, 2100-2335
Min. 28.2	Vis. km. 5	28.24	
Dry 47.9	Clouds 10	p (red.) 28.13	
Wet	NS		
R.H. 90		Morn. overcast NS	Foren. cloudy Fc, Sc
Precip. 42.5 mm / 1.67 in.		Noon cloudy	Aftern. overcast Sc
Snowfall/-Depth — in / — in		Eve. overcast	Night "

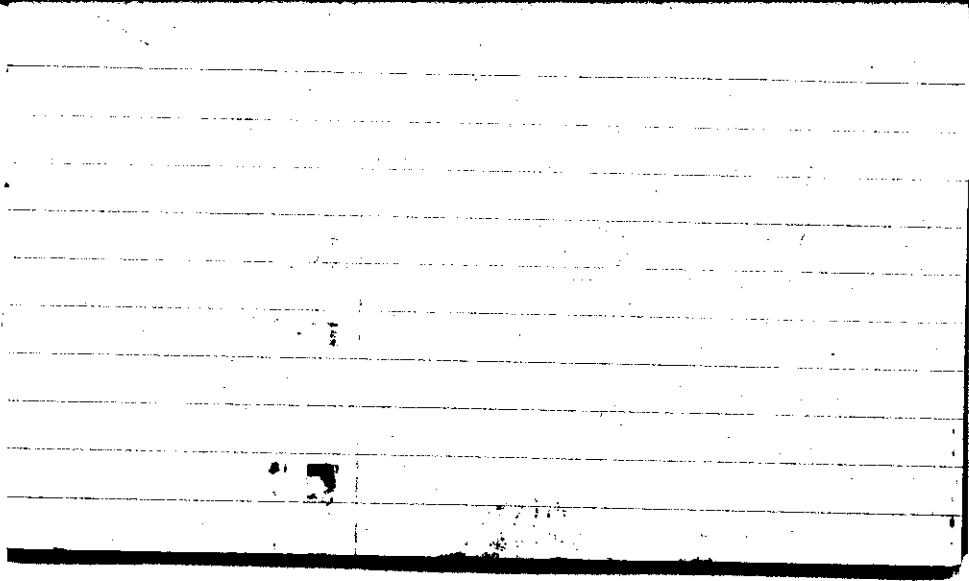
rain recorder changed 0830 #



STATE COLLEGE, Pa. Date DEC 25 1941

Time
0700

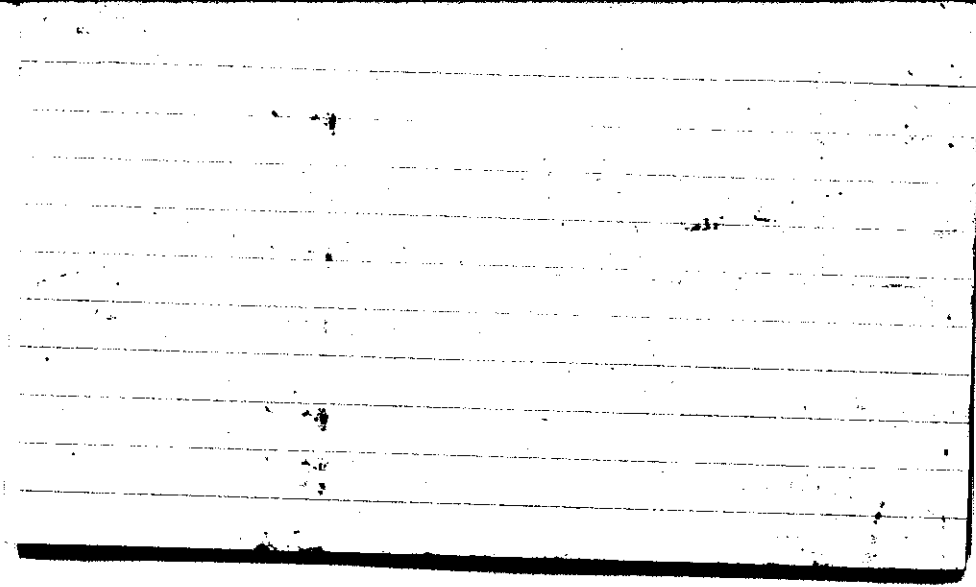
Max. 48.0	Wind F WNW 5	Barom. t 70	General Obs. 1240 - 9° - 1110	
Min. 38.5	Vis. km. 9	p 28.71		
Dry 38.7	Clouds 10	p(red.) 28.60		
Wet	Sc			
R.H. 88		Morn. overcast Sc	Foren. overcast, drizzle	
Precip. 4.0 mm / 0.16 in.		Noon overcast	Aftern. overcast	
Snowfall/-Depth — in / — in.		Eve. 41	Night "	



STATE COLLEGE, Pa. Date DEC 26 1941

Time 8:00

Max. 39.7	Wind F SE 1	Barom. t 71	General Obs. ~ 05:10 - 07:15	
Min. 30.5	Vis. km. 3	p 28.72	00 - 06:00	
Dry 22.6	Clouds 10	p (red.) 28.61	01 05:00 - 09:30	
Wet	NS			
R. Hg 91		Morn. overcast light rain	Foren. overcast light rain	
Precip. 0.4 mm / 0.01 in.		Noon overcast	Aftern. overcast	
Snowfall / -Depth — in / — in.		Eve. "	Night "	

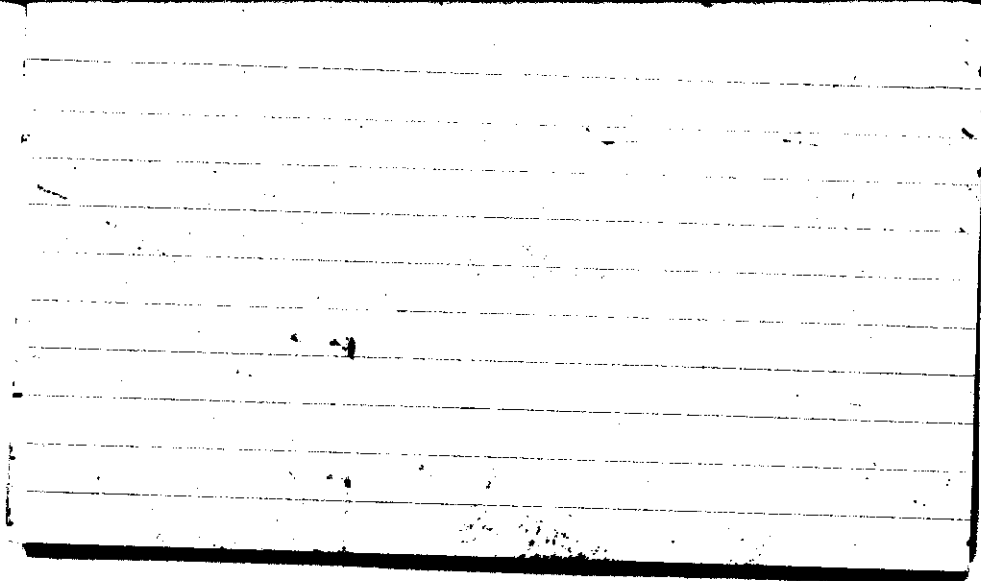


STATE COLLEGE, Pa. Date **DEC 27 1941**

Time
0700

Max. 42.9	Wind F W 4	Barom. t 71	General Obs. * ← 0730-1200 △	
Min. 32.3	Vis. km. 16	p 28.81		
Dry 40.0	Clouds 10	p (red.) 28.70		
Wet	Sc			
R.H. 56		Morn. overcast, rain, cloudy	Foren. overcast, snow	
Precip. 0.8 mm / 0.03 in.		Noon overcast	Aftern. overcast	
Snowfall / -Depth — in / — in.		Eve. "	Night "	

rain recorder changed 0745 a

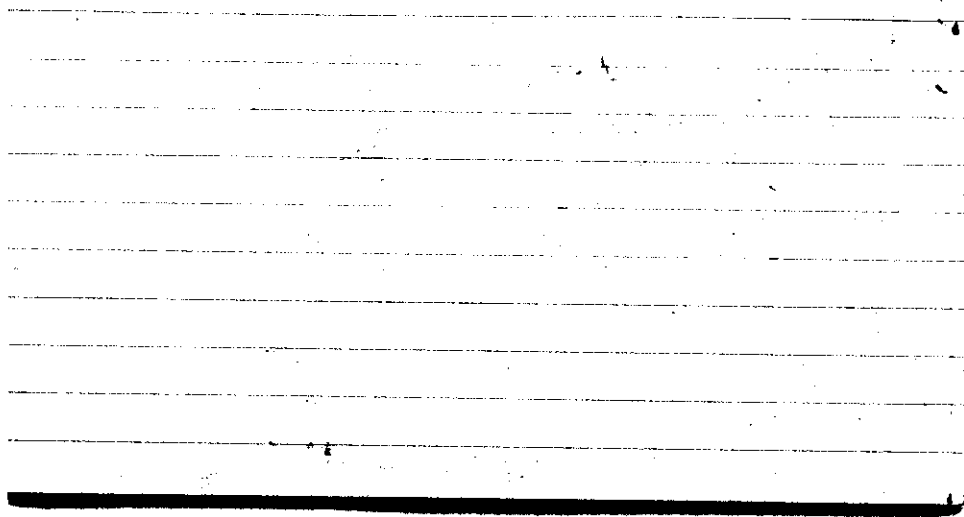


STATE COLLEGE, Pa. Date DEC 28 1941

Time
0705

Max. 40.2	Wind F NW 3	Barom. t 72	General Obs. 101° 0200-0500 * 0820-2400	
Min. 31.1	Vis. km. 13	p 28.98		
Dry 31.2	Clouds 10	p(red.) 28.87		
Wet	Sc			
R.H. 85		Morn. overcast snow	Foren. except snow	
Precip. mm/ T in.		Noon " "	Aftern. " " "	
Snowfall/-Depth in/ in.		Eve. " "	Night " "	

rain recorder changed 0750 E

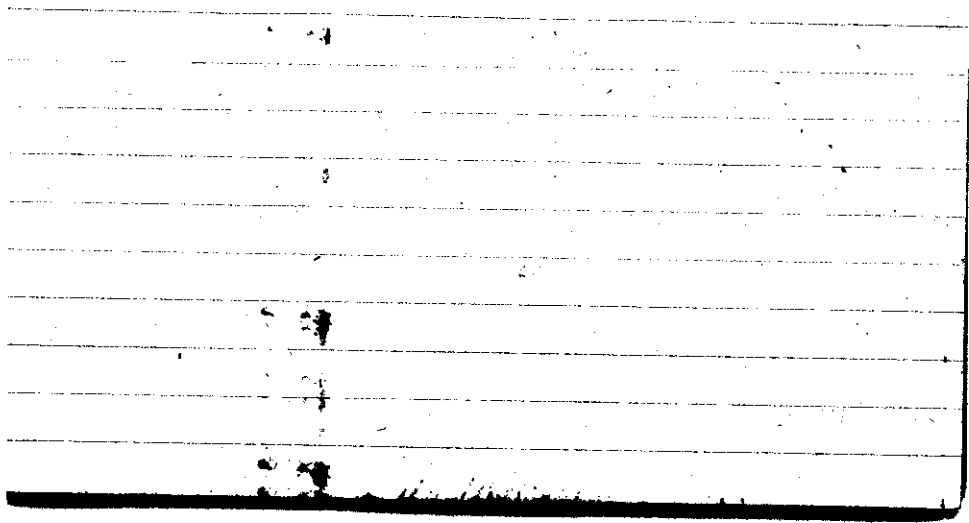


STATE COLLEGE, Pa. Date DEC 29 1941

Time
0700

Max. 33.4	Wind F NW 3	Barom. t 69	General Obs. *° 0000-0120: 0215-0400	
Min. 28.4	Vis. km. 8	p 29.01	*° 0630-1100	
Dry 29.1	Clouds 10	p(red.) 28.90		
Wet	Sc			
R.H. 75		Morn. overcast, snow	Foren. overcast, snow	
Precip. 0.09 mm / T in		Noon partly cloudy	Aftern. partly cloudy	
Snowfall/-Depth — in / — in		Eve. fair	Night clear	

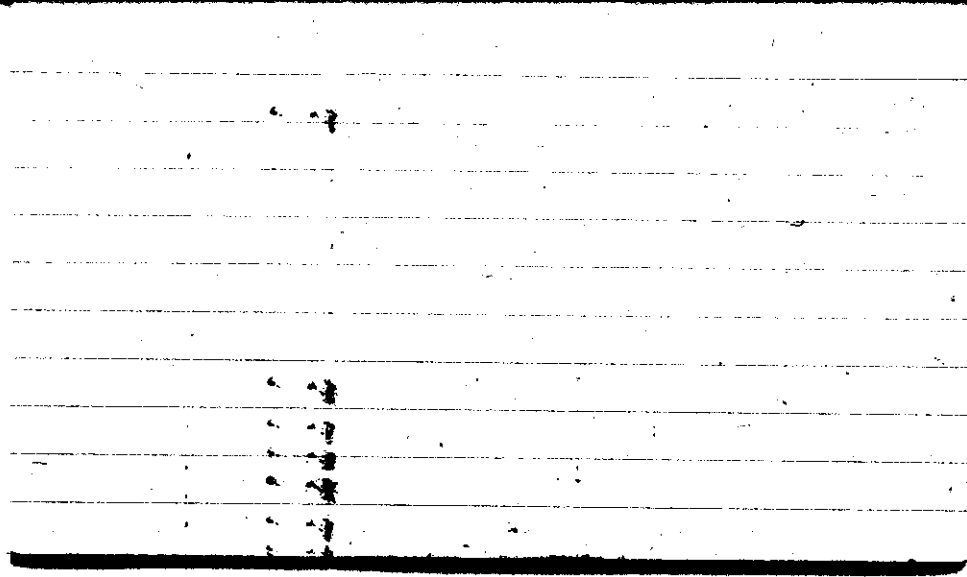
11mm recorder changed 0745 E



STATE COLLEGE, Pa. Date DEC 30 1944

Time 0700

Max. 31.7	Wind F calm 0	Barom. t 70	General Obs. L ² - 0630
Min. 15.0	Vis. km. 50	p 29.20	1200 "
Dry 16.2	Clouds 0	p (red.) 29.09	1330 (o) - 1500
Wet			1930-2300 (o)
R.H. 90		Morn. clear	Foren. <i>ci pit</i> <i>fais cc</i>
Precip. mm / T in.		Noon <i>fais</i>	Aftern. <i>ci densus ac</i> <i>ci pra</i> <i>ci cc</i>
Snowfall/-depth in / in.		Eve. <i>cloudy</i>	Night <i>cloudy</i>
<i>rain recorder changed 1630 E</i>			



STATE COLLEGE, Pa. Date DEC 31 1949

Time
0700

Max. 29.9	Wind P calm 0	Barom. t 71	General Obs. 0815 00 *° 1210-1340
Min. 15.6	Vis. km. 7	p 29.14	0845 c *° 1630-1840
Dry 26.7	Clouds 10	p(red.) 29.03	0945 c
Wet	Ac		1030 c - 11h
R.H. 59		Morn. cs floc overcast ca neb	Foren. as overcast cs
Precip. — mm/— in.		Noon "	Aftern. "
Snowfall/-Depth — in/— in.		Eve. "	Night "

