

STATE COLLEGE, Pa. Date

JUL - 1 1942

Time
0700

Max. 85	Wind F 2	Barom. t 79	General Obs. = 0000-0020 ♂ 0830 ♂ - 1120 ♀ 1305-1310 ♂ 1355-1405 ♂ R. 0915 1725 T. ♀ - 1740 22 ^h =
Min. 63	Vis. km. 6	p 28.83	
Dry 67	Clouds 9	p (red.) 28.70	
Wet .	Ac Fg		
R.H. 96	air sat. a a file	Morn. cldy	Foren. over rain Thunderstorm
Precip. 6.7 mm / .27 in.		Noon over rain	Aftern. over Thunderst. rain & lower
Snowfall / -Depth in / in.		Eve. over pm	Night cldy pm

The following reference is missing in the
College/M.I. Library:

Author:

Title:

Year:

Price:

Purchase is desirable: immediately

eventually

Please fill out and give either to Miss
Lucille Jackson or H. Landsberg. Your
cooperation is appreciated.

STATE COLLEGE, Pa. Date

JUL - 2 1942

Time

0700

Max. 76	Wind F calm	Barom. t 78	General Obs. = 2	
Min. 62	Vis. km. 0	p 2875		
Dry 64	Clouds Fg	p(red.) 28.62		
Wet				
R.H. 98		Morn. thick fog	Foren. <i>partly foggy</i>	
Precip. 5.6 mm / .22 in.		Noon <i>partly cloudy</i>	Aftern. <i>pty cldy - cldy</i>	
Snowfall/-Depth in/ in.		Eve. <i>pty cldy</i>	Night <i>cldy</i>	

HN

STATE COLLEGE, Pa. Date

JUL - 3 1942

Time

0700

Max. 81	Wind F Calm	Barom. t 78	General Obs. ∞ 9° 1945-2010 R° 1940 - 214 3 - 244
Min. 58	Vis. km. 7	p 28.93	
Dry 64	Clouds 0	p(red.) 28.80	
Wet			
R.H. 85	Morn. clear-hazy		Foren. clear haze
Precip. — mm/ — in	Noon pthy cdy to fair		Aftern. pthy cldy
Snowfall/ — Depth — in/ — in	Eve. cldy		Night clear
MIR 2000			

The following reference is missing in the
College/M.I. Library:

Author:

Title:

Year:

Price:

Purchase is desirable: immediately
 eventually

Please fill out and give either to Miss

Lucille Jackson or H. Landsberg. Your

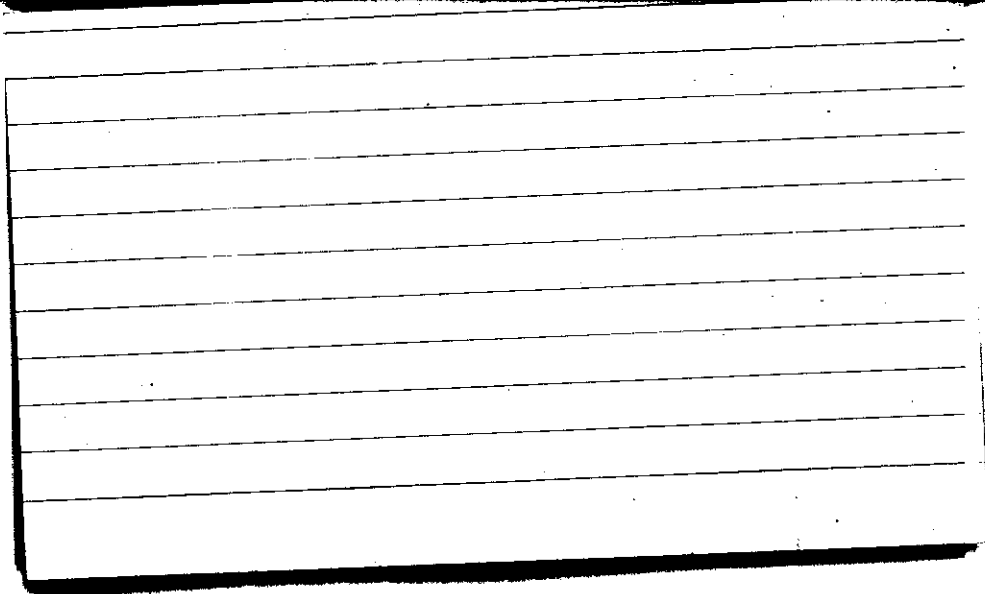
cooperation is appreciated.

STATE COLLEGE, Pa. Date **JUL - 4 1942**

Time

0700

Max. 81	Wind F NW 3	Barom. t 79	General Obs. ∞	
Min. 59	Vis. km. 6	p 28.94	R 1710-1900	
Dry 64	Clouds 4	p(red.) 28.81	P 1750-1840	
Wet	6 for in sub.			
R.H. 86		Morn. fair	Foren. pth cldy to cldy	
Precip. 2.6 mm / 0.10 in		Noon cldy	Aftern. cldy	
Snowfall / -Depth in / in		Eve. cldy - thunderstorm	Night cldy	
	HN	0730		



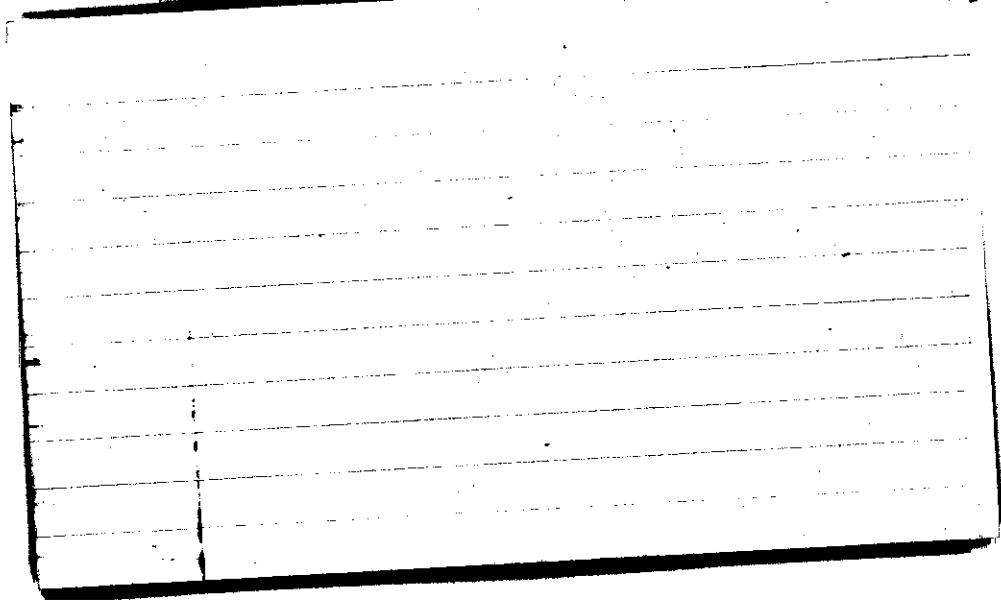
STATE COLLEGE, Pa. Date

JUL - 5 1942

Time
0700

Max. 85	Wind F Calm	Barom. t 80	General Obs. 0930-0950 R 2200-2400+
Min. 63	Vis. km. 25	p 28.94	
Dry 67	Clouds ?	p(red.) 28.80	
Wet	ci fil ci thc cs pd.		
R.H. 66		Morn. cloudy - ci fil, thc, pd.	Foren. ptly cldy to cldy
Precip. 0.4 mm / .02 in.		Noon cldy	Aftern. cldy to ptly cldy
Snowfall/-Depth in / in.		Eve. cldy thunder - storm	Night over to cldy

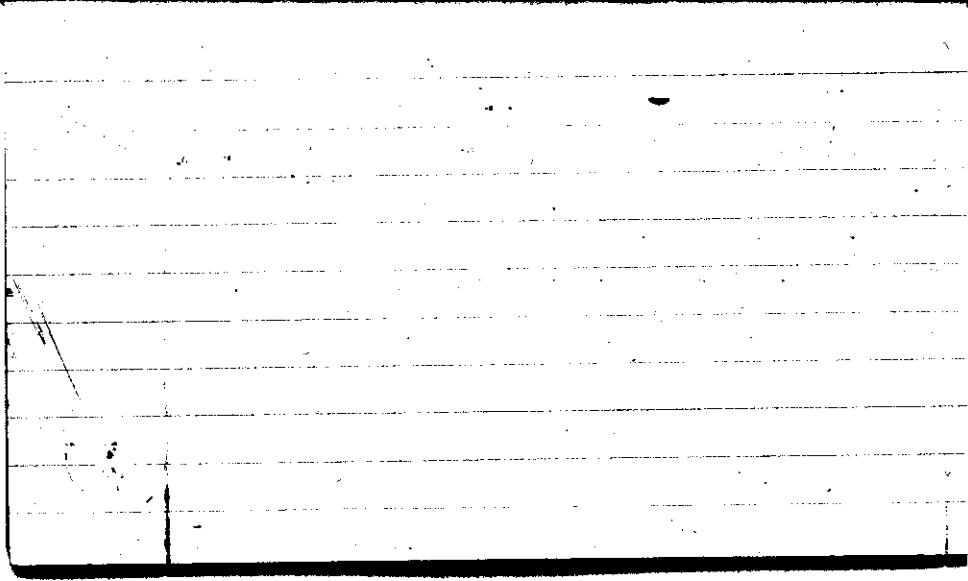
RR 0730



STATE COLLEGE, Pa. Date JUL - 6 1942

Time
0700

Max. 82	Wind F W-1	Barom. t 81	General Obs. 00	
Min. 67	Vis. km. 4	p 28.73	↳ 0000-0200 WSW 50 mph	
Dry 73	Clouds 6	p(red.) 28.59	1155 ⁰ -1215 1230-1300	
Wet	Ac			
R.H. 87		Morn. cloudy	Foren. cldy	
Precip. - mm / - in.		Noon cldy rain	Aftern. cldy stormy	
Snowfall/-Depth - in / - in.		Eve. cldy to pthly cldy	Night clearing	
M.R. 0730				



STATE COLLEGE, Pa. Date

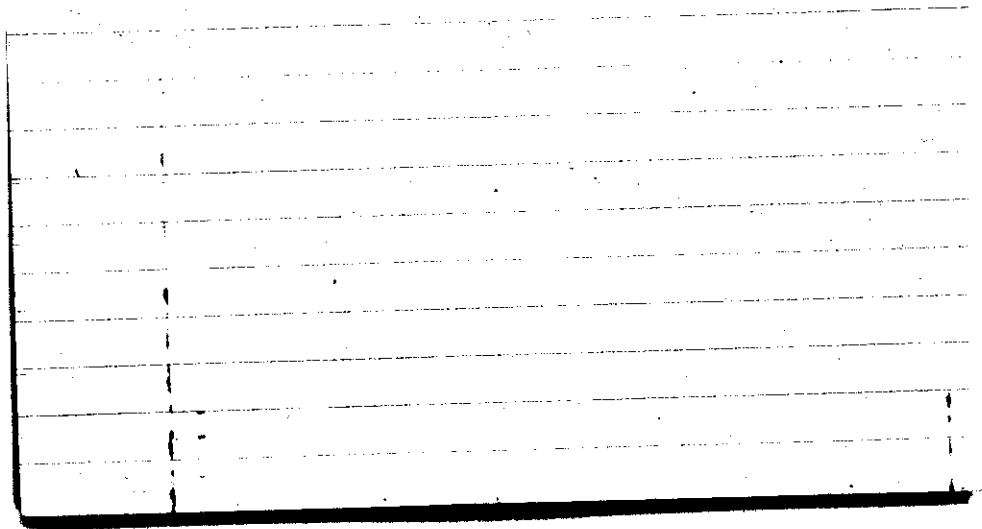
JUL - 7 1942

Time

0700

Max. 78	Wind F SW 2	Barom. t 68	General Obs. <i>o2 =</i>	
Min. 48	Vis. km. 50	p 28.83		
Dry 58	Clouds 1	p(red.) 28.73		
Wet	<i>a pd. i ft.</i>			
R.H. 75		Morn. <i>fair</i>	Foren. <i>fair to partly clgy</i>	
Precip. 0.2 mm / 0.01 in.		Noon <i>clgy</i>	Aftern. <i>pty clgy</i>	
Snowfall / -Depth in / in		Eve. <i>pty clgy</i>	Night <i>pty clgy</i>	

HN



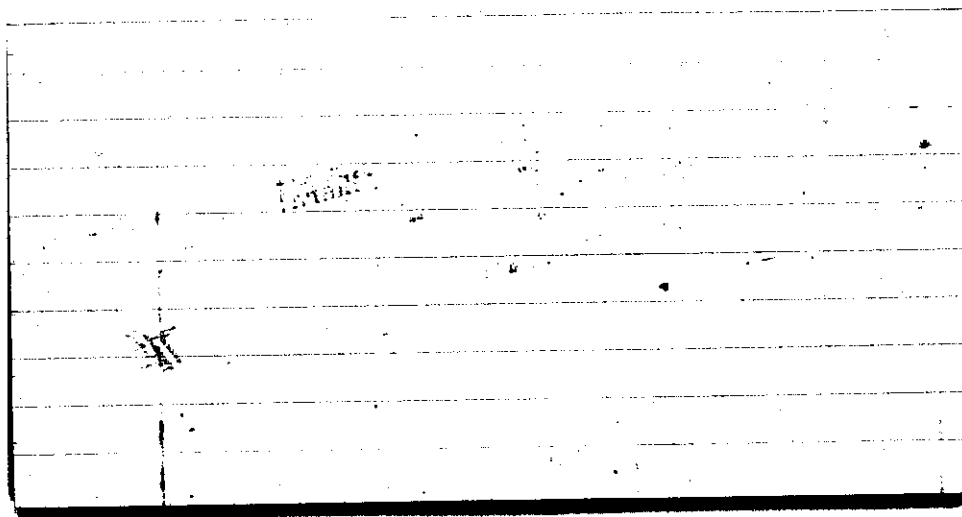
STATE COLLEGE, Pa. Date

JUL - 8 1942

Time

0700

Max. 75	Wind P sw 2	Barom. t 75	General Obs. <i>o' a</i>	
Min. 54	Vis. km. 8	p 28.75		
Dry 62	Clouds 3	p (red.) 28.63		
Wet	Ac			
R.H. 75		Morn. <i>ptly cldy</i>	Foren. <i>ptly cldy</i>	
Precip. / mm/ in.		Noon <i>cldy</i>	Aftern. <i>cldy</i>	
Snowfall/-Depth in/ in.		Eve. <i>ptly cldy</i>	Night <i>clear</i>	
		<i>HN</i>	<i>1300</i>	



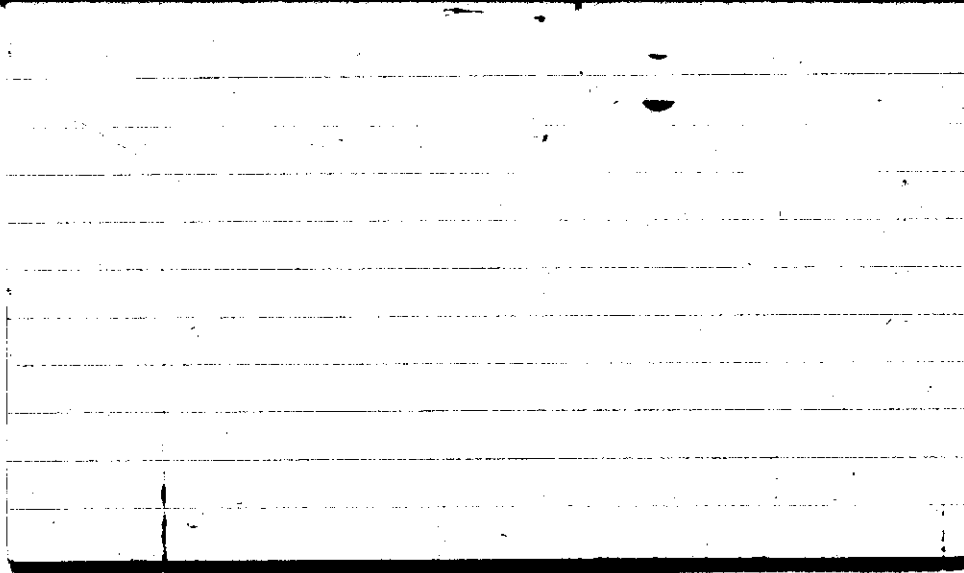
STATE COLLEGE, Pa. Date

JUL - 9 1942

Time
0700

Max. 78	Wind F calm	Barom. t 77	General Obs. <i>o' o' a'</i>	
Min. 51	Vis. km. 25	p 28.88		
Dry 61	Clouds 0	p(red.) 28.75		
Wet				
R.H. 70		Morn. <i>clear</i>	Foren. <i>clear to pty cldy</i>	
Precip. mm/ in.		Noon <i>pty cldy</i>	Aftern. <i>in part in part, in part</i>	
Snowfall/-Depth in/ in.		Eve. <i>clear</i>	Night <i>clear</i>	

HN



STATE COLLEGE, Pa. Date

JUL 10 1942

Time

0700

Max. 80	Wind F Calm	Barom. t 77	General Obs. 00°	
Min. 52	Vis. km. 25	p 28.97	101° 1230-1340	91° 1415-1910
Dry 57	Clouds >9	p (red.) 28.84	2005-2010	2050-2115
Wet	Ac		2230-2235	2300-2400+
R.H. 88		Morn. cloudy	Foren. cloudy	
Precip. mm/ in.		Noon 20% rain	Aftern. over rain	
Snowfall/-Depth in/ in.		Eve. over rain shower	Night over rain	
Mk 0700				

STATE COLLEGE, Pa. Date

JUL 11 1942

Time

0700

Max. 75	Wind F WNW 3	Barom. t 77	General Obs. =	
Min. 57	Vis. km. 8	p 28.78	•° 0000-0130	
Dry 68	Clouds 8	p(red.) 28.65	•° 0200-0330	
Wet	sc fc			
R.H. 91		Morn. <i>cldy</i>	Foren. <i>cldy</i>	
Precip. 18.6 mm / 0.73 in.		Noon <i>cldy to pty cldy</i>	Aftern. <i>pty cldy</i>	
Snowfall/-Depth in/ in.		Eve. <i>pty cldy to cldy ci fc, ci dr</i>	Night <i>clearing</i>	

HN 0300

STATE COLLEGE, Pa. Date

JUL 12 1942

Time

0700

Max. 83	Wind F S 1	Barom. t 78	General Obs. ∞	
Min. 59	Vis. km. 10	p 29.02		
Dry 67	Clouds 2	p(red.) 28.89		
Wet	<i>a fum a flow</i>			
R.H. 75		Morn. <i>fair</i>	Foren. <i>fair</i>	
Precip. mm/ in.		Noon <i>fair</i>	Aftern. <i>fair</i>	
Snowfall/-Depth in/ in.		Eve. <i>fair</i>	Night <i>clear</i>	

HN

STATE COLLEGE, Pa. Date

JUL 13 1942

Time

0700

Max. 85	Wind F calm	Barom. t 79	General Obs. ∞	
Min. 60	Vis. km. 8	p 29.05	19-21 F ^o cinst. a few	
Dry 66	Clouds —	p(red.) 28.92		
Wet				
R.H. 87		Morn. clear-busy	Foren. clear to fair	
Precep. — mm / — in		Noon fair to pty cldy	Aftern. pty cldy	
Snowfall/Depth in / in		Eve. pty cldy Thunder	Night clear	
MR				

The following reference is missing in the
College/M.I. Library:

Author:

Title:

Year:

Price:

Purchase is desirable: immediately
eventually

Please fill out and give either to Miss
Lucille Jackson or H. Landsberg. Your
cooperation is appreciated.

STATE COLLEGE, Pa. Date

JUL 14 1942

Time

0700

Max. 92	Wind F sw - 1	Barom. t 82	General Obs. ∞	
Min. 66	Vis. km. 6	p 28.88	1530 ^o cl neb, fl, flow, pol - 1600	
Dry 75	Clouds 8	p(red.) 28.74		
Wet	st			
R.H. 86		Morn. cldy hazy	Foren. cldy	
Precip. — mm / — in.		Noon cldy to pty cldy	Aftern. pty cldy	
Snowfall / -Depth — in / — in.		Eve. pty cldy to fair	Night clear	

RHR 0700

The following reference is missing in the
College/M.I. Library:

Author:

Title:

Year:

Price:

Purchase is desirable: immediately

eventually

Please fill out and give either to Miss

Lucille Jackson or H. Landberg. Your

cooperation is appreciated.

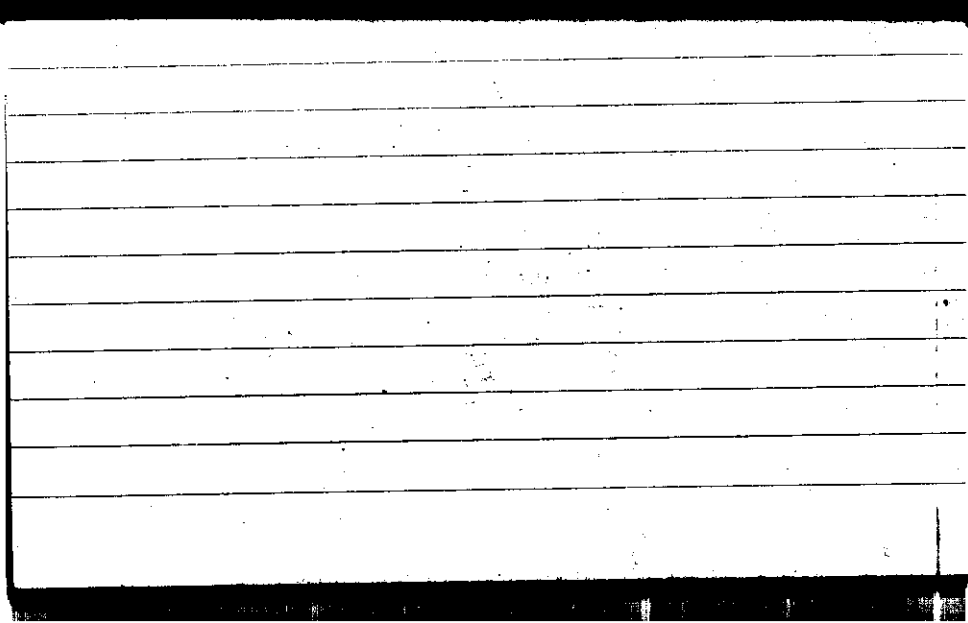
STATE COLLEGE, Pa. Date

JUL 15 1942

Time

0700

Max. 87	Wind F WNN 1	Barom. t 82	General Obs. 1500-1600 ☉
Min. 58	Vis. km. 50	p 28.92	
Dry 65	Clouds ci. fum.	p (red.) 28.78	
Wet			
R.H. 51		Morn. clear	Foren. clear
Precip. — mm/ — in.		Noon clear	Aftern. fair ci. fum., ci. um., ci. l.
Snowfall/-Depth in/ in.		Eve. fair	Night clear



STATE COLLEGE, Pa. Date JUL 16 1942

Time
0700

Max. 80	Wind F. S 1	Barom. t 80	General Obs. ∞ α 0930 ☉ ☉ -1100 0° 2350-2600
Min. 53	Vis. km. 20	p 29.00	
Dry 64	Clouds < 1	p(red,) 28.86	
Wet	Ac ci flow		
R.H. 70		Morn. fair	Foren. fair
Precip. / mm / / in.		Noon fair	Aftern. <i>pty cldy - cldy</i>
Snowfall/-Depth		Eve. ovc	Night ovc
STATE COLLEGE, Pa.		Date	Time

HN

STATE COLLEGE, Pa. Date

JUL 17 1942

Time

0700

Max. 83	Wind F Calm	Barom. t 74	General Obs. = • 0000-0010 • 0145-0900 1550-1650 R 1410 ▲ 1600 R 1520 ▼
Min. 63	Vis. km. 11	p 29.04	
Dry 64	Clouds 10	p(red.) 28.92	
Wet -	As Fc		
R.H. 96		Morn. ovc - lgt rain, lgt dr	Foren. cldy to pty dr
Precip. 4.1 mm / 0.16 in.		Noon pty dr	Aftern. pty dr to cldy to ovc
Snowfall/-Depth in/ in.		Eve. ovc	Night 73

MR 0940

Year	Month	Day	Time	Location	Remarks
1952	Jan	1	10:00
1952	Jan	2	10:00
1952	Jan	3	10:00
1952	Jan	4	10:00
1952	Jan	5	10:00
1952	Jan	6	10:00
1952	Jan	7	10:00
1952	Jan	8	10:00
1952	Jan	9	10:00
1952	Jan	10	10:00
1952	Jan	11	10:00
1952	Jan	12	10:00
1952	Jan	13	10:00
1952	Jan	14	10:00
1952	Jan	15	10:00
1952	Jan	16	10:00
1952	Jan	17	10:00
1952	Jan	18	10:00
1952	Jan	19	10:00
1952	Jan	20	10:00
1952	Jan	21	10:00
1952	Jan	22	10:00
1952	Jan	23	10:00
1952	Jan	24	10:00
1952	Jan	25	10:00
1952	Jan	26	10:00
1952	Jan	27	10:00
1952	Jan	28	10:00
1952	Jan	29	10:00
1952	Jan	30	10:00
1952	Jan	31	10:00

STATE COLLEGE, Pa. Date

JUL 18 1942

Time
0700

Max.	Wind F	Barom.	General Obs.
89		t 81	0130 - 0320 ☁ ⚡ B - 1830
Min. 64	Vis. km. 30	p 28.93	0515 - 0645 ☁
Dry 69	Clouds 10	p(red.) 28.79	0700 - 0705 ☁ 1st 1045-1110; 2nd 1135-1145; 3rd 1245-1650
Wet	Cb FC SC		1st 1745-1910
R.H. 97		Morn. Early ovc. heavy thunders. hail	Foren. cly - thunderstorm
Precip. 10.9 mm / .43 in.		Noon ovc - thunderstorm	Aftern. ovc - thunderstorm
Snowfall/-Depth / in / in.		Eve. ovc - cldy - thunderstorm	Night cldy - pty cldy

MR 0745

The following reference is missing in the
College/M.I. Library:

Author:

Title:

Year:

Price:

Purchase is desirable: immediately
 eventually

Please fill out and give either to Miss
Lucille Jackson or H. Landsberg. Your
cooperation is appreciated.

STATE COLLEGE, Pa. Date

JUL 19 1942

Time
0700

Max. 82	Wind F Calm	Barom. t 80	General Obs. ∞
Min. 69	Vis. km. 12	p 28.88	2040 FB - 2200
Dry 77	Clouds 7/10 Ci flc Ci fil Ci neb.	p (red.) 28.75	2052-2057
Wet -			
R.H. 90		Morn. fair - Ci fil, Ci flc, Ci neb.	Foren. pty cldy
Precip. 12.0 mm / 0.47 in.		Noon pty cldy	Aftern. pty cldy
Snowfall / -Depth - in / in.		Eve. pty cldy	Night cldy - thunderstorm
MSR			

0
3-
0
0
4
6-
3
3
1
7
5
7
3
6
7
8-
9
-
1+

Lesson (20) - 19 + 61 80 + 2.1 4.0

STATE COLLEGE, Pa. Date

JUL 20 1942

Time
0800

Max.	90	Wind F W-1	Barom. t 84	General Obs.
Min.	73	Vis. km. 12	p 28.77	• 1215-1230
Dry	76	Clouds >9	p(red.) 28.63	1740-1830 (•) ci fil, cumb, ci den.
Wet	-	Ac Fc		0925
R.H.	90		Morn. ovc	Foren. pth cldy-cldy
Precip.	1.6 mm / .06 in.		Noon pth cldy-cldy	Aftern. cloudy-rain
Snowfall / -Depth	/ in / / in.		Eve. cloudy	Night fair

MSR

The following reference is missing in the
College/M.I. Library:

Author:

Title:

Year:

Price:

Purchase is desirable: immediately
eventually

Please fill out and give either to Miss
Lucille Jackson or H. Landsberg. Your
cooperation is appreciated.

STATE COLLEGE, Pa. Date

JUL 21 1942

Time
0700

Max.	Wind F	Barom.	General Obs.
86	SSE-1	t 78	∞ 2
Min.	Vis. km.	p	
61	12	28.91	
Dry	Clouds	p(red.)	
66	7	28.78	
Wet	ci fil cc cu		
R.H.	83	Morn. cldy. ci, fil, cc, ca	Foren. pty ddy
Precip.	mm/ T in.	Noon cldy	Aftern. pty ddy
Snowfall/-Depth	in/ - in.	Eve. pty ddy	Night clearing
	mm/ 0740		

The following reference is missing in the
College/M.I. Library:

Author:

Title:

Year:

Price:

Purchase is desirable: immediately
 eventually

Please fill out and give either to Miss
Lucille Jackson or H. Landsberg. Your
cooperation is appreciated.

STATE COLLEGE, Pa. Date

JUL 22 1942

Time

0700

Max. 81	Wind F Calm	Barom. t 81	General Obs. <i>D 00</i>	
Min. 57	Vis. km. 25	p 28.96	11 ^h - 1130 <i>(o)</i> <i>4 neb. c. fil</i>	
Dry 65	Clouds 5	p(red.) 28.82	• 1810 - 1815 • 2300 - 2340	
Wet <i>EE</i>	Ac, Cirra c. Den.			
R.H. 78		Morn. <i>ptly cldy</i>	Foren. <i>ptly cldy to cldy</i>	
Precip. / mm / - in.		Noon <i>cldy</i>	Aftern. <i>cldy</i>	
Snowfall / -Depth in / in.		Eve. <i>cldy rain</i>	Night <i>occ. rain</i>	

The following reference is missing in the
College/M.I. Library:

Author:

Title:

Year:

Price:

Purchase is desirable: immediately

eventually

Please fill out and give either to Miss
Lucille Jackson or H. Landsberg. Your
cooperation is appreciated.

STATE COLLEGE, Pa. Date

JUL 23 1942

Time

0700

Max. 86	Wind F WSW 2	Barom. t 81	General Obs. • 0030-0100 • 0345-0430 • 0540-0620
Min. 65	Vis. km. 5	p 28.90	TS 1952 - 2300
Dry 68	Clouds .3	p (red.) 28.76	
Wet	Ac Fc Fs		
R.H. 97		Morn. cldy to pthy cldy	Foren. cldy
Precip. 0.2 mm / 0.01 in.		Noon pthy cldy	Aftern. pthy cldy
Snowfall / -Depth - in / - in.		Eve. cldy	Night cldy
			(N)

Handwritten notes on lined paper, including the expression $(3) - 5 + 2$ and the number 2.3 .

$\frac{2}{3}$

-3

$(3) - 5 + 2$

7

-1.0

2.3

STATE COLLEGE, Pa. Date

JUL 24 1942

Time

0700

Max. 85	Wind F calm	Barom. t 82	General Obs. =
Min. 64	Vis. km. 3	p 28.99	
Dry 68	Clouds 9	p (red.) 28.85	
Wet 6	sc		
R.H. 95		Morn. cldy	Foren. cldy to ptly cldy
Precip. mm/ in.		Noon ptly cldy	Aftern. ptly cldy - cldy
Snowfall/ -Depth in/ in.		Eve. cldy	Night ptly cldy

4.0

+ 4.0

4
Trenton (11)

STATE COLLEGE, Pa. Date JUL 25 1942

Time
0700

Max. 87	Wind F NE-1	Barom. t 80	General Obs. = 0 2
Min. 59	Vis. km. 5	p 29.08	
Dry 63	Clouds 7	p(red.) 28.94	
Wet -	cc, ci, neb, ci, fil, Ac		
R.H. 92		Morn. cldy - hazy	Foren. cldy
Precip. - mm / - in.		Noon cldy	Aftern. cldy
Snowfall / -Depth - in / - in.		Eve. cldy	Night cldy
0700 MJR	at middle of ...		

The following reference is missing in the
College/M.I. Library:

Author:

Title:

Year:

Price:

Purchase is desirable: immediately
eventually

Please fill out and give either to Miss
Lucille Jackson or H. Landsberg. Your
cooperation is appreciated.

STATE COLLEGE, Pa. Date

JUL 26 1942

Time
0700

Max. 84	Wind F Calm	Barom. t 76	General Obs. ∞
Min. 62	Vis. km. 20	p 29.13	01 0730-0835
Dry 68	Clouds 10	p(red.) 29.01	
Wet	sc		
R.H. 87		Morn. ovc - rain	Foren. ovc
Precip. mm / in.		Noon ovc	Aftern. ovc - cldy
Snowfall/-Depth in / in.		Eve. ovc	Night ovc

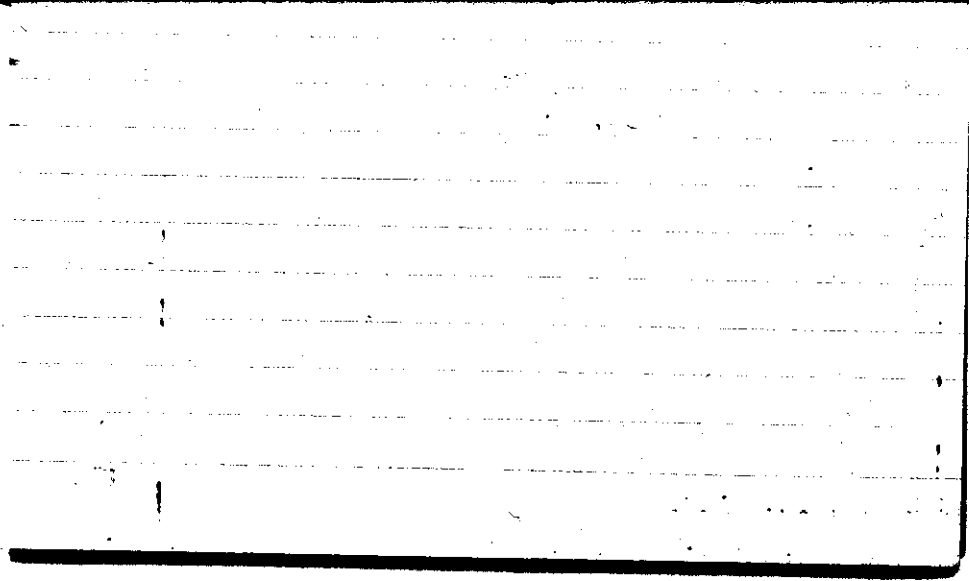
MJR 0700

STATE COLLEGE, Pa. Date JUL 27 1942

Time 0700

Max. 79	Wind P Calm	Barom. t 80	General Obs. =	10:30 ☉ -
Min. 67	Vis. km. 4	29.06	° 0500 - 0515	11:15
Dry 70	Clouds 10	p(red.) 28.92	° 0715 (few drops)	23-24°
Wet -	Ac, Ag		PK 1140 13250 - 14:30 1352 13	☉
R.H. 97		Morn. rain early - fog - ovc	Foren. ovc	
Precip. 10 mm / .04 in.		Noon ovc. then sun rain	Aftern. ovc to clear	
Snowfall / -Depth - in / - in.		Eve. clearing	Night clear	

MJR 0745



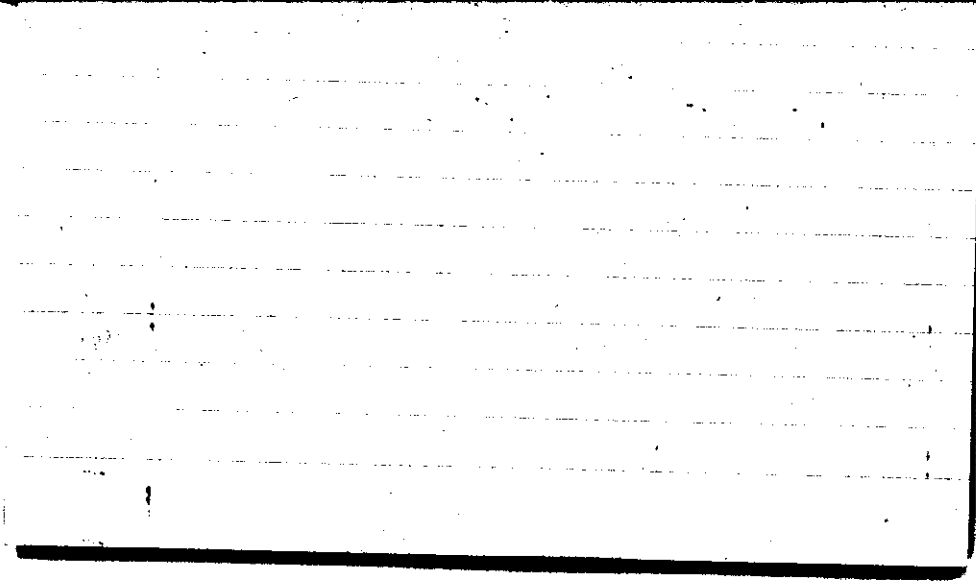
STATE COLLEGE, Pa. Date

JUL 28 1942

Time
0700

Max.	81	Wind P WSW-1	Barom. t 80	General Obs. =	
Min.	63	Vis. km. 5	p 28.98		
Dry	68	Clouds 2 cc, Ac	p(red.) 28.84		
Wet	-				
R.H.	96		Morn. fair- fog-	Foren. ptly cldy	
Precip.	0.3 mm / .01 in.		Noon ptly cldy	Aftern. ptly cldy to cldy	
Snowfall/-Depth	- in / - in.		Eve. cldy to ptly cldy	Night ptly cldy.	

MJR



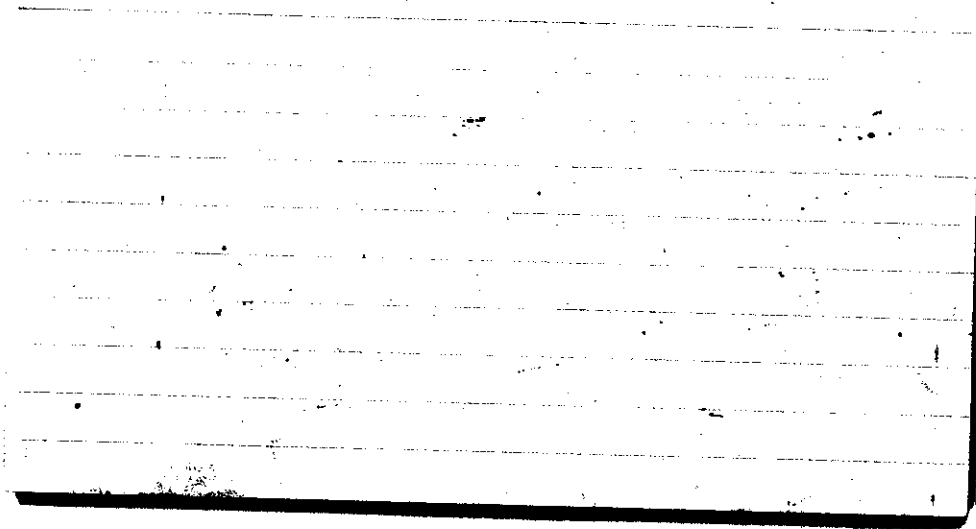
STATE COLLEGE, Pa. Date

JUL 29 1942

Time
0700

Max. 87	Wind P calm	Barom. t 77	General Obs. = α 1015 T ₂ - 1140 α 1510 R - 1630 α
Min. 66	Vis. km. 6	p 28.86	1455-1540 α
Dry 70	Clouds 4 ci, ci pa, ci flac	p (red.) 28.73	
Wet			
R.H. 90		Morn. fair	Foren. cldy Thunder
Precip. mm/ in.		Noon 12 ^h 19.2 mm. = 0.76"	Aftern. over with br. Thunderstorm
Snowfall/-Depth in/ in.		Eve. cldy ci flac, ci fl. ci net	Night cldy to rly cldy

HN

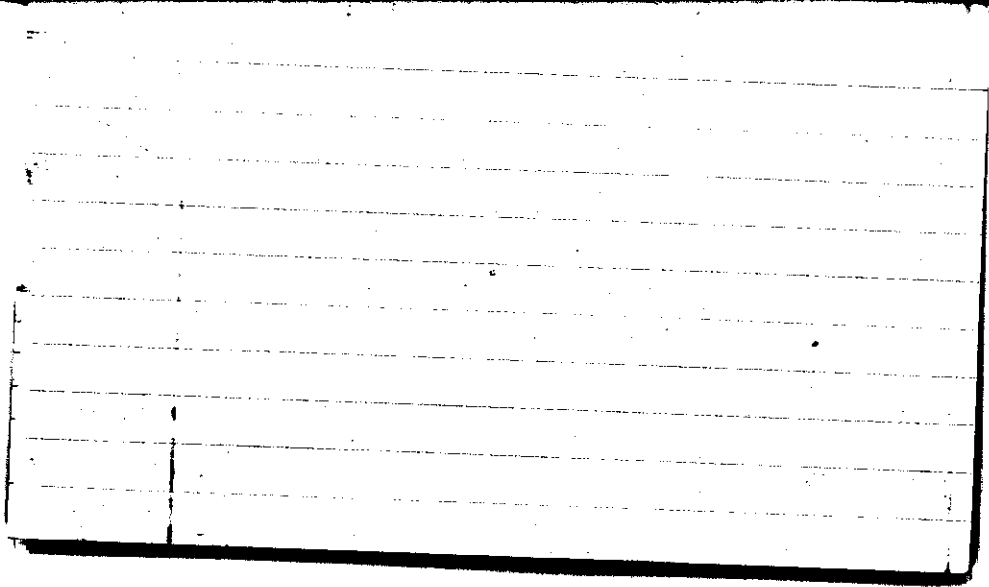


STATE COLLEGE, Pa. Date

JUL 30 1942

Time
0700

Max. 84	Wind F NE 2	Barom. t 79	General Obs. =
Min. 64	Vis. km. 2	p 28.88	
Dry 68	Clouds 9	p (red.) 28.75	
Wet	st (Ac)		
R.H. 97		Morn. cloudy to over	Foren. cloudy - partly cloudy
Precip. 26.1 mm / .79 in.		Noon partly cloudy	Aftern. cirrus, part. f. locs, pepus, partly cloudy
Snowfall / -Depth in / in.		Eve. cloudy - partly cloudy	Night cloudy



STATE COLLEGE, Pa. Date JUL 31 1942

Time
0700

Max. 85	Wind F NNE-1	Barom. t 81	General Obs. = 0900 -
Min. 65	Vis. km. 4	28.90	9 ¹² 0440-0745 R 0415-0730 ↳ 2030-2330
Dry 66	Clouds 10 Ac, Cb, Fe	p (red.) 28.76	9 ⁰¹ 0755-0820 9 ⁰ 0855-0910
Wet -			
R.H. 98		Morn. over, rain showers, thunderstorm	Foren. over (p 78)
Precip. 10.9 mm / 0.43 in.		NOON over to cloudy	Aftern. cloudy
Snowfall/-depth - in / - in.		Eve. cloudy	Night ↙ cloudy

MJR

- 0895

