

State College, Pa. Date

MAY 01 1942

Time
0700

Max. 89	Wind F WSW 1	Barom. t 73	General Obs. ∞ 0545-0630 ☉	
Min. 58	Vis. km. 6	p 28.94	1740 T & ↓ 1750-2000	
Dry 64	Clouds 6	p(red.) 28.82		
Wet	<i>i. flow</i>			
R.H. 67		Morn. <i>fair i. flow</i>	Foren. <i>fair i.</i>	
Precip. / mm / in.		Noon <i>fair</i>	Aftern. <i>cldy</i>	
Snowfall / -Depth in / in.		Eve. <i>cldy to occ. R.</i>	Night <i>cldy</i>	

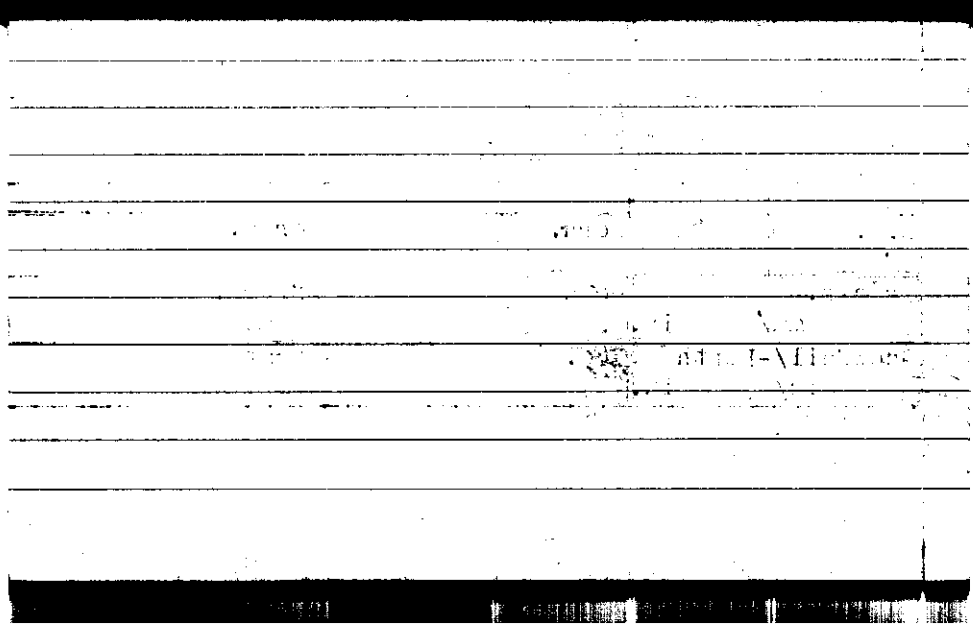
W.R.

MAY 02 1942

Time
0700

Max. 92	Wind F SE 1	Barom. t 83	General Obs.	
Min. 62	Vis. km. 16	p 28.89	B 1545-1630 / 10' 1555-1730	
Dry 64	Clouds 6	p(red.) 28.75		
Wet	Ac Acc			
R.H. 81		Morn. cldy w/ ac	Foren. cldy	
Precip. mm/ T in.		Noon cldy to pty cldy	Aftern. cldy to pty cldy	
Snowfall/-Depth in/ in.		Eve. pty cldy	Night pty cldy	

W/2



STATE COLLEGE, Pa. Date

MAY 03 1942

Time

0700

Max. 83	Wind S 3	Barom. t 82	General Obs. 0500-1030 T _g 0555-1020
Min. 59	Vis. km. 5	P 28.93	0 ² 2000 T _g 1930-2400
Dry 60	Clouds 10	p(red.) 28.79	
Wet	As Ns cb		
R.H. 97		Morn. <i>over thunderstorm rain</i>	Foren. <i>thunder rain</i>
Precip. 10.6 mm / 0.42 in.		Noon <i>cldy to pky cldy</i>	Aftern. <i>ci flow, comed almost ce pky cldy</i>
Snowfall/-Depth in/ in.		Eve. T _g <i>cldy</i>	Night T _g <i>cldy</i>

M.P.

		R.H.	
MORN.			
		Precip.	
MOON		in	
Aftern.			
		Snowfall	
Night		Depth	
		in	

STATE COLLEGE, Pa. Date

MAY 04 1942

Time

0700

Max. 81	Wind F W 3	Barom. t 82	General Obs. 0000-0330 \uparrow TS -0300	
Min. 59	Vis. km. 12	p 28.79		
Dry 63	Clouds 9	p(red.) 28.65		
Wet	csdm cc as			
R.H. 91		Morn. cloudy	Foren. cloudy	
Precip. 18.5 mm / 0.73 in.		Noon cloudy	Aftern. cloudy	
Snowfall / -Depth in / in.		Eve. ptly cloudy to fair	Night fair	

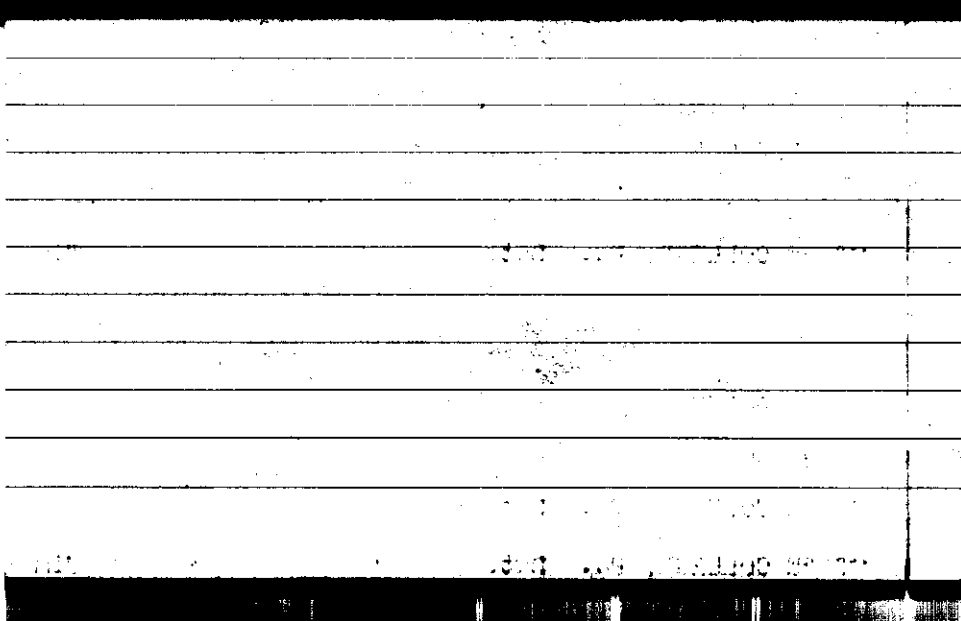
172

MAY 05 1942

0700

Max. 72	Wind F WNW 3	Barom. t 81	General Obs. 0700 α	
Min. 42	Vis. km. 25	p 29.09		
Dry 47	Clouds 4	p(red.) 28.95		
Wet	<i>c/loc</i> <i>c/fine</i> Ac, As			
R.H. 66	Sc	Morn. <i>pk dly c/loc</i> <i>c/fine</i>	Foren.	<i>fair</i>
Precip. mm/ in.		Noon	<i>fair</i>	Aftern. <i>fair</i>
Snowfall/-Depth in/ in.		Eve.	<i>fair</i>	Night <i>fair</i>

h



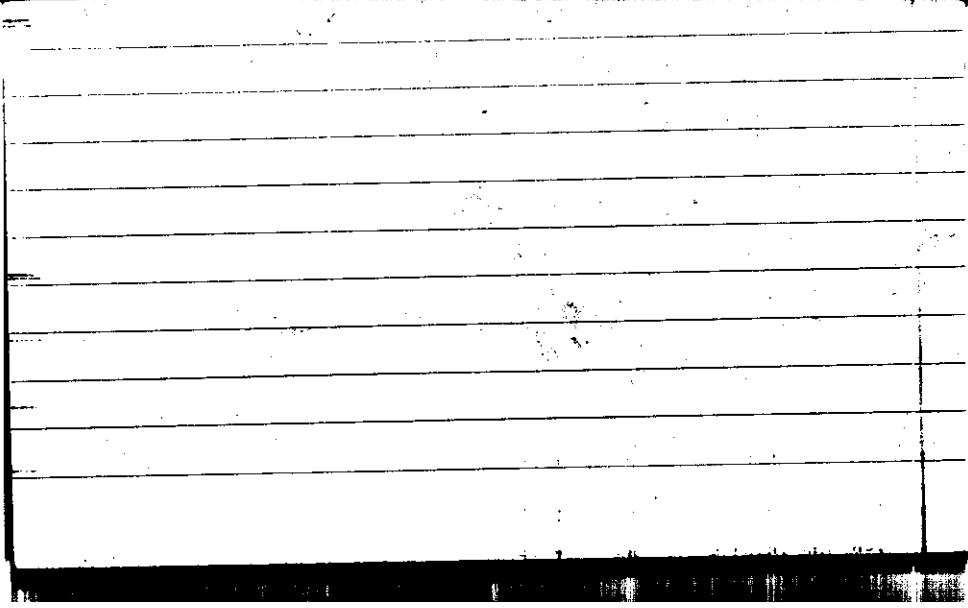
STATE COLLEGE, Pa. Date

MAY 06 1942

Time

0700

Max. 68	Wind F E 1	Barom. t 78	General Obs. 06 45 ☉ (i fl, pcc, cc)	
Min. 42	Vis. km.	p 29.16	07 30 ☉ - 0900	
Dry 47	Clouds 9+	p(red.) 29.03	1200 ☉ - 1330	
Wet	Cs		1700 ☉ - 2400	
R.H. 70	Ac	Morn. over. Cs Cc As	Foren. clgy	
Precip. / mm / / in.		Noon clgy	Aftern. over	
Snowfall/-Depth in/ in.		Eve. over. rain	Night over.	
W.P.				



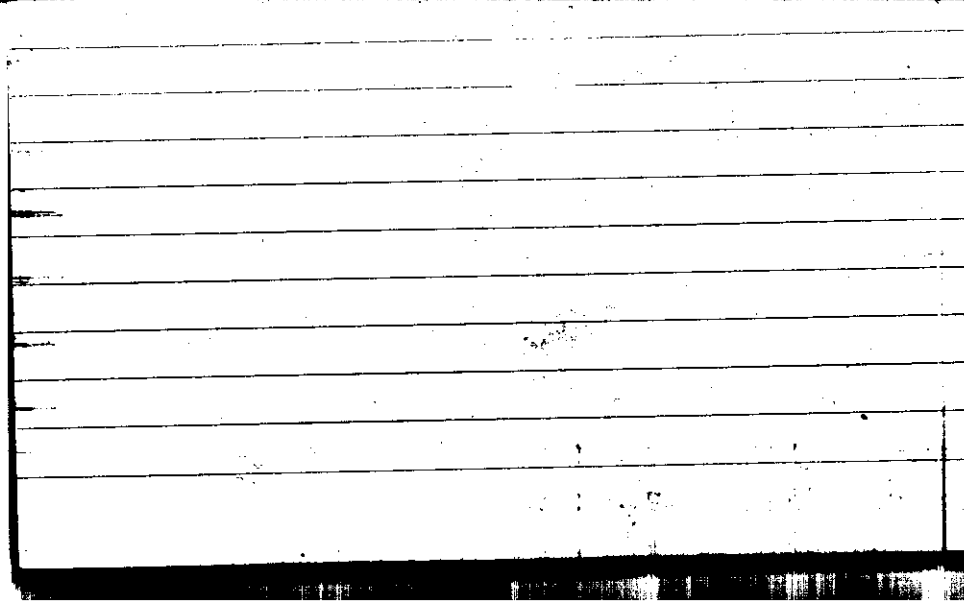
STATE COLLEGE, Pa. Date

MAY 07 1942

Time
0700

Max. 60	Wind F SSW 3	Barom. t 75	General Obs. 0000 • -0230 = 0700 0310 • -0340 1530 • dr.	
Min. 47	Vis. km. 3	p 28.67		
Dry 56	Clouds 9	p (red.) 28.55		
Wet	Sc			
R.H. 97		Morn. <i>clgy</i>	Foren. <i>clgy</i>	
Precip. 10.5 mm / 0.41 in.		Noon .	Aftern. <i>rain drops</i>	
Snowfall / -Depth - in / - in.		Eve. "	Night <i>clgy</i>	

h.



STATE COLLEGE, Pa. Date

MAY 08 1942

Time

0700

Max. 61	Wind F NW 3	Barom. t 74	General Obs.	
Min. 46	Vis. km. 15	p 28.78		
Dry 47	Clouds 10	p(red.) 28.66		
Wet	Sc			
R.H. 89		Morn. over	Foren. over	
Precip. - mm/ T in.		Noon "	Aftern. -	
Snowfall/-Depth - in/ - in.		Eve. "	Night -	

WR

Blank lined page with a table at the bottom.

	MOON	MOON	MOON
MOON	MOON	MOON	MOON
MOON	MOON	MOON	MOON

STATE COLLEGE, Pa. Date

MAY - 9 1942

Time
0700

Max. 55	Wind F WSW 1	Barom. t 74	General Obs. σ° =	
Min. 42	Vis. km. 5	p 28.84		
Dry 46	Clouds 3	p(red.) 28.73		
Wet	Ac			
R.H. 92		Morn. <i>pty cldy to fair</i>	Foren. <i>fair</i> 0715	
Precip. mm/ in		Noon. <i>pty cldy</i>	Aftern. <i>pty cldy</i>	
Snowfall/Depth in/ in		Eve. <i>pty cldy</i>	Night <i>pty cldy</i>	

Wind F.	Barom.	General Obs.
Min.	Vis. km. p.	
Dir.	Clouds (p. red.)	
Wet		
H.H.	MORN.	ROSEN.
Temp. p.	MORN.	TEMPER.
in	in	in
showing	showing	showing
in	in	in

STATE COLLEGE, Pa. Date **MAY 10 1942**

Time
0700

Max. 69	Wind F NW 2	Barom. t 78	General Obs.
Min. 46	vis. km. 25	p 28.93	
Sky 51	Clouds 4	p(red.) 28.80	
Rel.	ci fil cu	MOON.	
A.H. 67		Morn: <i>pty clay</i>	Morn: <i>at 7:00 on down</i>
Precip. <i>mm</i>	Depth <i>in</i>	Noon: <i>pty clay</i>	Aftern: <i>fair</i>
Snowfall <i>in</i>	Depth <i>in</i>	Eve: <i>fair</i>	Night: <i>fair</i>

0705

MR

STATE COLLEGE, Pa. Date MAY 1 1942

Time

0700

Max. 66	Wind P 0	Barom. t 76	General Obs. w ^o a' 1300 ☉; 1545 ☉ - 1630;
Min. 36	Vis. km. 25	p 29.08	
Dry 44	Clouds	p (red.) 28.96	
Wet			
R.H. 65		Morn. ci flou. aft fair to clear	Foren: fair
Precip. / mm / in.		Noon fair ci	Aftern: fair ci ci den
Snowfall / -Depth / in. / in.		Eve. fair ci den cc	Night fair

th

DATE	DESCRIPTION	AMOUNT	CHECK NO.
11/1/71	Payroll	100.00	
11/2/71	Office Exp.	25.00	
11/3/71	Travel	150.00	101
11/4/71	Medical	75.00	
11/5/71	Utilities	40.00	
11/6/71	Insurance	60.00	
11/7/71	Repairs	30.00	
11/8/71	Salaries	200.00	
11/9/71	Equipment	120.00	102
11/10/71	Supplies	10.00	
11/11/71	Bank Charges	5.00	
11/12/71	Interest	15.00	
11/13/71	Depreciation	80.00	
11/14/71	Profit	450.00	
11/15/71	Total	1260.00	

MAY 12 1942

Time 0700

Max. 72	Wind F SW 3	Barom. t 74	General Obs. 0530-0600 ↓ 0615-0630 ○ 1215 ⊙; 1430 ⊙ -1500
Min. 44	Vis. km. 12	p 28.80	0700 ⊙ 1205-15; 1710-1730
Dry 61	Clouds 4 ci, cum d, flou cc	p (red.) 28.68	1720 T is.
Wet			
R.H. 65	Ac	Morn. pty cldy	Foren: pty cldy to cldy
Precip: / mm / T in.		Noon cldy, shower	Aftern: over gusty thunder, shower
Snowfall / -Depth in / in.		Eve. cldy clearing	Night clear

0725

Ma

1			
2			
3			
4			
5			
6			
7			
8			
9			
10			
11			
12			
13			
14			
15			
16			
17			
18			
19			
20			
21			
22			
23			
24			
25			
26			
27			
28			
29			
30			
31			
32			
33			
34			
35			
36			
37			
38			
39			
40			
41			
42			
43			
44			
45			
46			
47			
48			
49			
50			
51			
52			
53			
54			
55			
56			
57			
58			
59			
60			
61			
62			
63			
64			
65			
66			
67			
68			
69			
70			
71			
72			
73			
74			
75			
76			
77			
78			
79			
80			
81			
82			
83			
84			
85			
86			
87			
88			
89			
90			
91			
92			
93			
94			
95			
96			
97			
98			
99			
100			

MAY 13 1942

TIME
0700

Max. 77	Wind F SW 1	Barom. t 79	General Obs. ∞	
Min. 53	Vis. km. 15	P 28.82		
Dry 61	Clouds 2	p(red.) 28.69		
Wet	comb. a fine			
R.H. 85		Morn. fair	Foren.	ptly clgy
Precip. 1 mm / 1 in.		Noon ptly clgy	Aftern.	ptly clgy to clgy
Snowfall/-Depth in/ in.		Eve. fair	Night	clear

1300

hr

STATE COLLEGE, Pa. Date **MAY 14 1942**

Time
0700

Max. 85	Wind F W 2	Barom. t 80	General Obs.
Min. 61	Vis. km. 20	p 28.88	
Dry 69	Clouds 1	p(red.) 28.75	
Wet	ci ft a		
R.H. 75			
Precip. / - Depth mm / in		Morn. fair	Evening. pty cldy
Snowfall / - Depth in / in		Noon cldy	Aftern. cc. ci ft. cldy ci ann.
		Eve. cldy	Night cldy

Year	Month	Day	Time	Location	Remarks
1941	Jan	1	10:00	St. Paul	Arrived
1941	Jan	2	10:00	St. Paul	Departed
1941	Jan	3	10:00	St. Paul	Arrived
1941	Jan	4	10:00	St. Paul	Departed
1941	Jan	5	10:00	St. Paul	Arrived
1941	Jan	6	10:00	St. Paul	Departed
1941	Jan	7	10:00	St. Paul	Arrived
1941	Jan	8	10:00	St. Paul	Departed
1941	Jan	9	10:00	St. Paul	Arrived
1941	Jan	10	10:00	St. Paul	Departed
1941	Jan	11	10:00	St. Paul	Arrived
1941	Jan	12	10:00	St. Paul	Departed
1941	Jan	13	10:00	St. Paul	Arrived
1941	Jan	14	10:00	St. Paul	Departed
1941	Jan	15	10:00	St. Paul	Arrived
1941	Jan	16	10:00	St. Paul	Departed
1941	Jan	17	10:00	St. Paul	Arrived
1941	Jan	18	10:00	St. Paul	Departed
1941	Jan	19	10:00	St. Paul	Arrived
1941	Jan	20	10:00	St. Paul	Departed
1941	Jan	21	10:00	St. Paul	Arrived
1941	Jan	22	10:00	St. Paul	Departed
1941	Jan	23	10:00	St. Paul	Arrived
1941	Jan	24	10:00	St. Paul	Departed
1941	Jan	25	10:00	St. Paul	Arrived
1941	Jan	26	10:00	St. Paul	Departed
1941	Jan	27	10:00	St. Paul	Arrived
1941	Jan	28	10:00	St. Paul	Departed
1941	Jan	29	10:00	St. Paul	Arrived
1941	Jan	30	10:00	St. Paul	Departed
1941	Jan	31	10:00	St. Paul	Arrived

STATE COLLEGE, Pa. Date

MAY 15 1942

Time
0700

Max. 80	Wind F SSE 2	Barom. t 77	General Obs. ° = ° °0430-0500 °0620-0700 20955-1000 ° 2630-2635 ° 2330 - S 45-55 m.p.h.
Min. 63	Vis. km. 10	p 28.92	
Dry 64	Clouds 9	p(red.) 28.79	
Wet	ac as re pret ms		
R.H. 91		Morn. over. with breaks light rain	Foren. cldy rain
Precip. T mm/ T in.		Noon cldy stormy	Aftern. cldy stormy
Snowfall/-Depth / in/ - in.		Eve. over. stormy	Night over. rain stormy

0730

H.

STATE COLLEGE, Pa. Date **MAY 16 1942**

Time
0700

Max. 74	Wind F ESE 2	Barom. t 72	General Obs. ● ●° 0000 - 0120 ●° 0120 - 0730 ●° 0830 - 1115
Min. 59	Vis. km. 5	p 28.69	
Dry 60	Clouds 10	p(red.) 28.58	
Wet -	75 Fs		
R.H. 97		Morn. ov. rain shower	Foren. ov. shower
Precip. 34.2 mm / 1.35 in.		Noon ov. rain shower	Aftern. cldy
Snowfall / -Depth / in. / in.		Eve. <i>cldy</i>	Night <i>cldy</i>

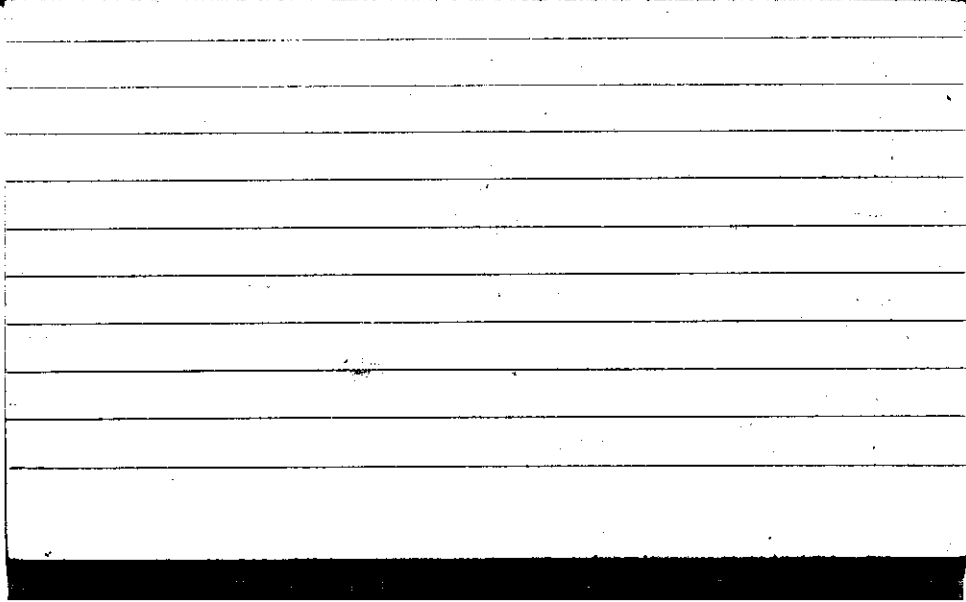
Date	Description	Debit	Credit
1911	To Balance	100.00	
1911	By Cash	50.00	50.00
1911	By Cash	25.00	25.00
1911	By Cash	25.00	25.00
1911	By Cash	25.00	25.00
1911	By Cash	25.00	25.00
1911	By Cash	25.00	25.00
1911	By Cash	25.00	25.00
1911	By Cash	25.00	25.00
1911	By Cash	25.00	25.00
1911	By Cash	25.00	25.00
1911	By Cash	25.00	25.00
1911	By Cash	25.00	25.00
1911	By Cash	25.00	25.00
1911	By Cash	25.00	25.00
1911	By Cash	25.00	25.00
1911	By Cash	25.00	25.00
1911	By Cash	25.00	25.00
1911	By Cash	25.00	25.00
1911	By Cash	25.00	25.00
1911	By Cash	25.00	25.00
1911	By Cash	25.00	25.00
1911	By Cash	25.00	25.00
1911	By Cash	25.00	25.00
1911	By Cash	25.00	25.00
1911	By Cash	25.00	25.00
1911	By Cash	25.00	25.00
1911	By Cash	25.00	25.00
1911	By Cash	25.00	25.00
1911	By Cash	25.00	25.00
1911	By Cash	25.00	25.00
1911	By Cash	25.00	25.00
1911	By Cash	25.00	25.00
1911	By Cash	25.00	25.00
1911	By Cash	25.00	25.00
1911	By Cash	25.00	25.00
1911	By Cash	25.00	25.00
1911	By Cash	25.00	25.00
1911	By Cash	25.00	25.00

MAY 17 1942

0700

Max. 68	Wind F WSW 1	Barom. t 70	General Obs. =
Min. 48	Vis. km. 6	p 28.98	17° 00' - 1715
Dry 51	Clouds 10	p(red.) 28.87	
Wet —	sc		
R.H. 90		Morn. ov =	Foren. <i>dy</i>
Precip. 6.5 mm / .26 in.		Noon <i>dy</i>	Aftern. <i>dy</i>
Snowfall/-Depth / in / in.		Eve. <i>dy</i> to <i>fair</i> <i>in heavy, or light, or none</i>	Night <i>fair</i>

8



STATE COLLEGE, Pa. Date MAY 18 1942

Time
0700

Max. 69	Wind F ESE 1	Barom. t 66	General Obs. 0200 1145 - 1230	
Min. 45	Vis. km 8	p 29.10		
Dry 53	Clouds 1	p (red.) 29.00		
Wet	ci ci fc			
R.H. 79		Morn. part. haze	Foren. fair	
Precip. — mm / — in.		Noon fair ci fl, some low ci fl	Aftern. fair	
Snowfall/-Depth in / in.		Eve. fair	Night pty ddy	

Year	Month	Day	Time	Location	Remarks
1972	Jan	1	08:00
1972	Jan	2	08:00
1972	Jan	3	08:00
1972	Jan	4	08:00
1972	Jan	5	08:00
1972	Jan	6	08:00
1972	Jan	7	08:00
1972	Jan	8	08:00
1972	Jan	9	08:00
1972	Jan	10	08:00
1972	Jan	11	08:00
1972	Jan	12	08:00
1972	Jan	13	08:00
1972	Jan	14	08:00
1972	Jan	15	08:00
1972	Jan	16	08:00
1972	Jan	17	08:00
1972	Jan	18	08:00
1972	Jan	19	08:00
1972	Jan	20	08:00
1972	Jan	21	08:00
1972	Jan	22	08:00
1972	Jan	23	08:00
1972	Jan	24	08:00
1972	Jan	25	08:00
1972	Jan	26	08:00
1972	Jan	27	08:00
1972	Jan	28	08:00
1972	Jan	29	08:00
1972	Jan	30	08:00
1972	Jan	31	08:00

MAY 19 1942

Time
0700

Max. 77	Wind F ESE 1	Barom. t 71	General Obs. oo
Min. 51	Vis. km. 8	p 29.01	1700-2130; 1510-1515, 1635 R 1700-1830 -1810
Dry 62	Clouds 9	p(red.) 28.90	1920 - 2140 9°
Wet	Ac As		
R.H. 80		Morn. cldy	Foren. cldy to over. rain
Precip. mm/ in.		Noon cldy	Aftern. cldy. rain Thunderstorm
Snowfall/Depth in/ in.		Eve. over. rain	Night over.

HK.

STATE COLLEGE, Pa. Date

MAY 20 1942

Time
0700

Max. 74	Wind F Calm	Barom. t 74	General Obs. \equiv 0320-410 \odot drps \odot 0810-0830; 1015-1215, 1505-1515 \odot 1610-1730; \odot 1805-1915 1745T 1815-1940
Min. 60	Vis. km. 3	p 28.98	
Dry 62	Clouds 10	p(red.) 28.86	
Wet	Sc St		
R.H. 96		Morn. <i>ovc fog</i>	Foren. <i>ovc rain</i>
Precip. 2.8 mm / .11 in.		Noon <i>ovc. rain</i>	Aftern. <i>ovc. rain</i> <i>thunderstorm shower</i>
Snowfall/-Depth / in / / in.		Eve. <i>ovc 75 &</i>	Night <i>ovc.</i>

MAY 21 1942

0700

Max. 67	Wind F NE 3	Barom. t 69	General Obs. = 0055-010; 0210-0340
Min. 50	Vis. km. 3	P 28.95	0740 g' -1400 1200.59"
Dry 51	Clouds 10	P (red.) 28.84	02 1650-2400
Wet	St		
R.H. 97		Morn. <i>ovc rain</i>	Foren. <i>ovc rain</i>
Precip. 17.8 mm/0.70 in.		Noon <i>ovc rain</i>	Aftern. <i>ovc rain</i>
Snowfall/-Depth in/ in.		Eve. <i>ovc-rain</i>	Night <i>ovc-rain</i>

No to

4

STATE COLLEGE, Pa. Date **MAY 22 1942**

0700 Time

Max. 63	Wind F 0	Barom. t 72	General Obs. \equiv	
Min. 51	Vis. km. 16	28.74	0000-0645	R 03-04
Dry 63	Clouds As % cu pc	p(red.) 28.63	02 1000-1005 02 1040-1240 02 1620-1810	R 1035-1200 B 1525-1730
Wet -				
R.H. 97		Morn: ovc. to cdy	at 10 with a few c/fc	Even: cdy to ovc, rain thunderstorm
Precip. 30.9 mm / 1.22 in.		Noon ovc rain shower Thunderstorm		Aftern. ovc. thunderstorm
Snowfall/-Depth - in / - in.		Eve. ovc to cdy		Night cdy

0750
NR

STATION	NOON	NOON
ALBANY	NOON	Precip.
		in
Night	Eve.	Snowfall-Depth
		in

STATE COLLEGE, Pa. Date **MAY 23 1942**

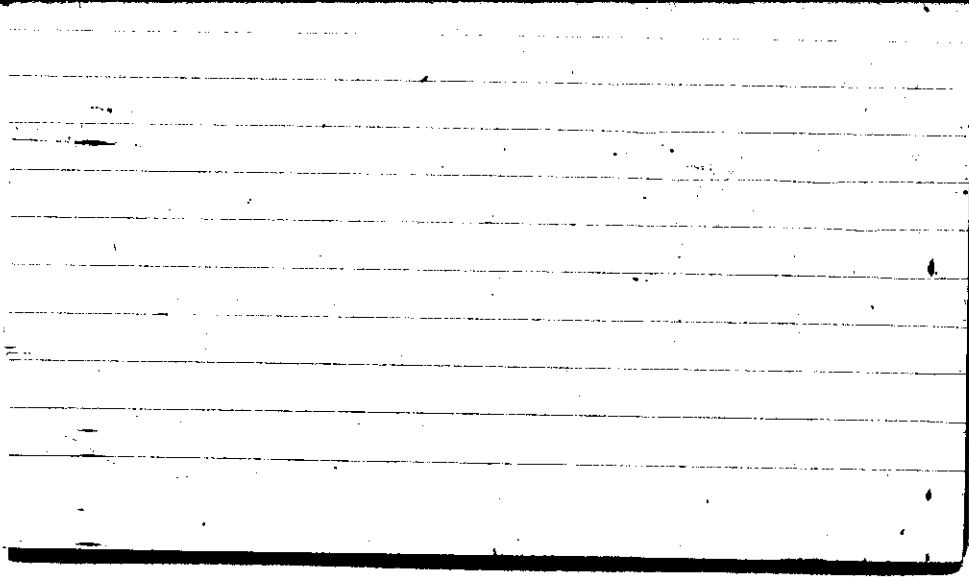
Time
0700

MR 0745

Max. 69	Wind W 3	Barom. t 72	General Obs. ° 1710-1730
Min. 50	vis. km. 16	p 28.77	
Dry 51	Clouds 7	p(red.) 28.66	
Wet	Ac Sc		
R.H. 80		Morn. cldy	Foren. cldy to pthly cldy
Precip. 19.3 mm / .76 in.		Noon cldy to pthly cldy	Aftern. cldy rain
Snowfall/-Depth in/ in.		Eve. fair	Night fair

STATE COLLEGE, Pa. Date **MAY 24 1942** 0700 Time

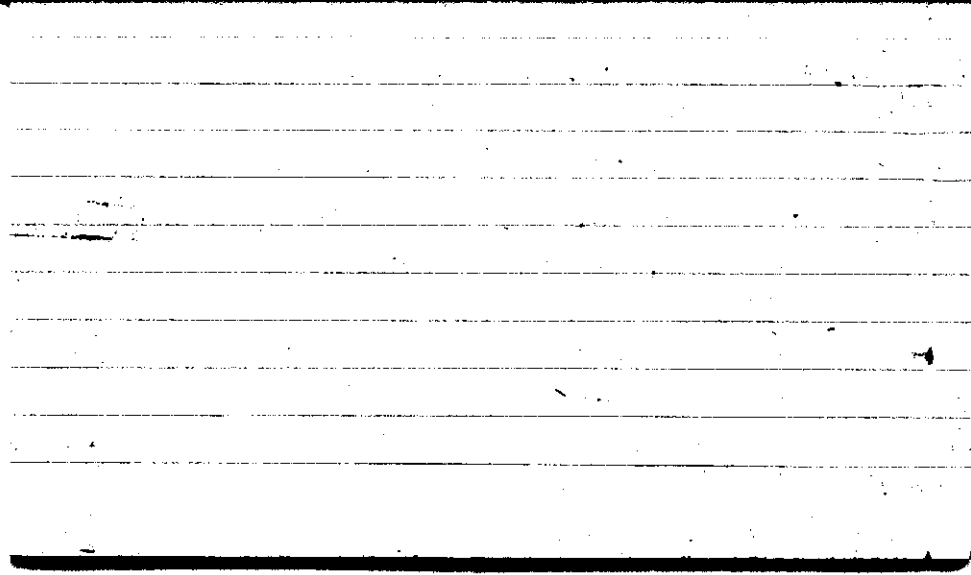
Max.	Wind F	Barom.	General Obs.
66	wsw 3	t 72	∞ a
Min.	Vis. km.	p	
47	8	28.76	
Dry	Clouds	p(red.)	
53	4 ci fil a flac	28.65	
Wet			
R.H.	85	Morn. fair	Foren. fair to pty drg
Precip.	0.3 mm / 0.01 in.	Noon pty drg to drg	Aftern. drg
Snowfall/-Depth	— in / — in	Eve. drg	Night drg
MJR 1505			



STATE COLLEGE, Pa. Date **MAY 25 1942**

Time
0700

Max. 65	Wind \bar{P} NW 3	Barom. t 72	General Obs. = 0° 0145-0350 9° 0645-0730
Min. 48	Vis. km. 6	28.87	
Dry 49	Clouds 10 st	p(red.) 28.76	
Wet			
R.H. 92		Morn. ovc - lgt drizzle	Foren. ovc
Precip. 0.6 mm / 0.02 in.		Noon ovc	Aftern. clgy to pty clgy
Snowfall/-Depth in/ in.		Eve. pty clgy	Night pty clgy to clear
MJA 0756			

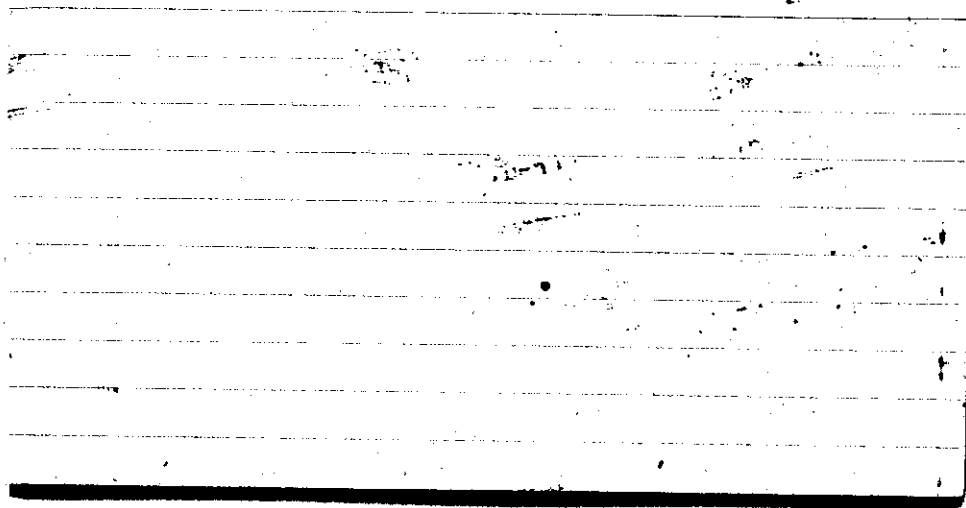


STATE COLLEGE, Pa. Date **MAY 26 1942**

Time
0700

Max. 61	Wind F Calm	Barom. t 72	General Obs. $\alpha^{\circ} =$
Min. 42	Vis. km. 6	p 28.85	o 1730 - 1820
Dry 47	Clouds clear	p(red.) 28.74	o 20 - 2400
Wet			
R.H. 94		Morn. clear - 1st fog	Foren. clear
Precip. Trace mm / Trace in.		Noon pty clly	Aftern. pty clly
Snowfall / Depth in / in.		Eve. pty clly / in pt, cc / as seen	Night fair

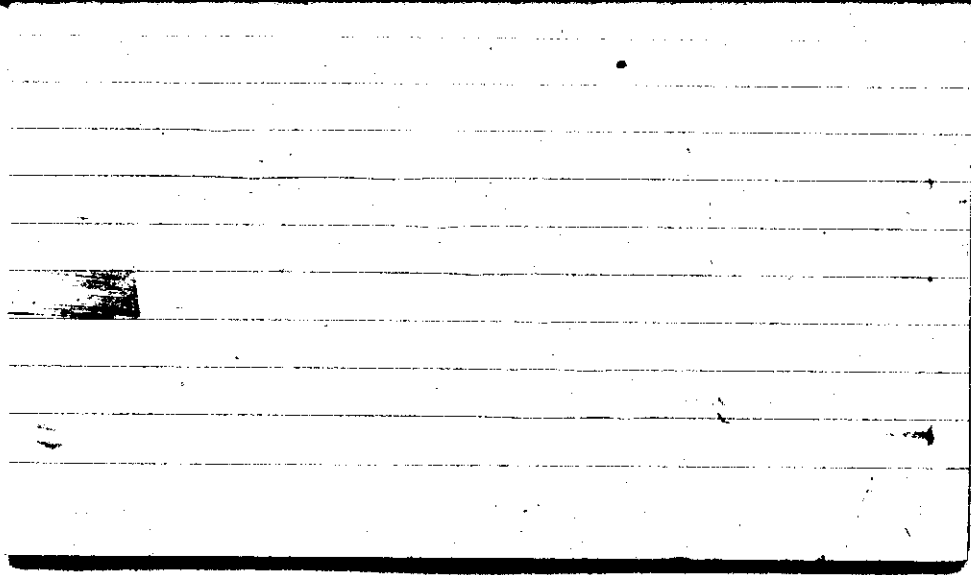
m/R



STATE COLLEGE, Pa. Date MAY 27 1942

Time
0701

Max. 76	Wind P W 2	Barom. t 76	General Obs. ☉ 0000 - 0030 ☉
Min. 47	Vis. km. 10	28.86	
Dry 60	Clouds 3	p(red.) 28.74	
Wet	Ac Cif		
R.H. 73		Morn. <i>ptly cloudy</i>	Foren. <i>ptly cloudy to clear</i>
Precip. mm/ in.		Noon <i>clear</i>	Aftern. <i>clear</i>
Snowfall/-Depth in/ in.		Eve. <i>ptly cloudy</i>	Night <i>ptly cloudy to clear</i>

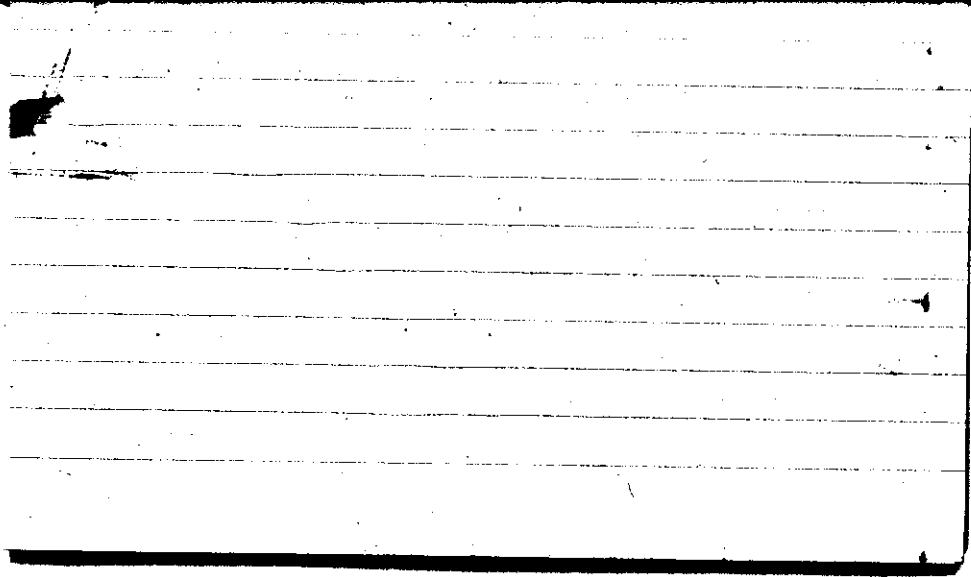


STATE COLLEGE, Pa. Date

MAY 28 1942

Time
0700

Max. 75	Wind F N 3	Barom. t 75	General Obs. α^2 (a) 1430-1530
Min. 47	Vis. km. 8	29.05	
Dry 50	Clouds < 1	p(red.) 28.93	
Wet	Fc		
R.H. 90		Morn. fair	Foren. fair
Precip. / mm / in.		Noon fair cs fcast	Aftern. fair cs fcast
Snowfall/-Depth in/ in.		Eve. fair ci den	Night fair
HV	kin	85	-3 jan. 71



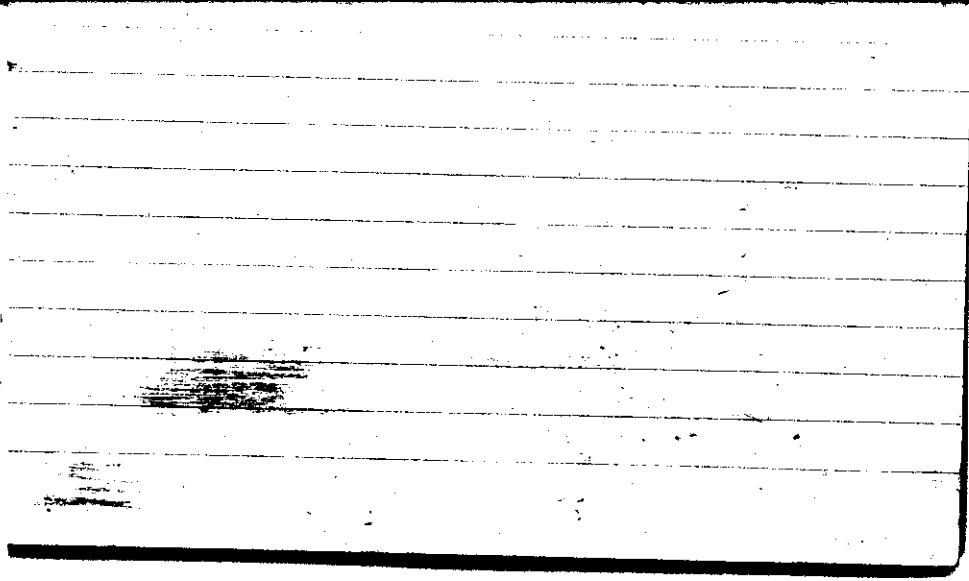
STATE COLLEGE, Pa. Date

MAY 29 1942

Time
0700

Max. 77	Wind F WSW 1	Barom. t 77	General obs. ∞
Min. 49	Vis. km. 8	p 29.10	1850 - 1910 ☉
Dry 65	Clouds Ac 5	p(red.) 28.97	
Wet			
R.H. 77		Morn. pty aldy - hazy	Foren. clear
Precip. — mm/ — in.		Noon clear to fair (cu)	Aftern. fair
Snowfall/-Depth — in/ — in.		Eve. fair cond. ci, pc.	Night fair

AR



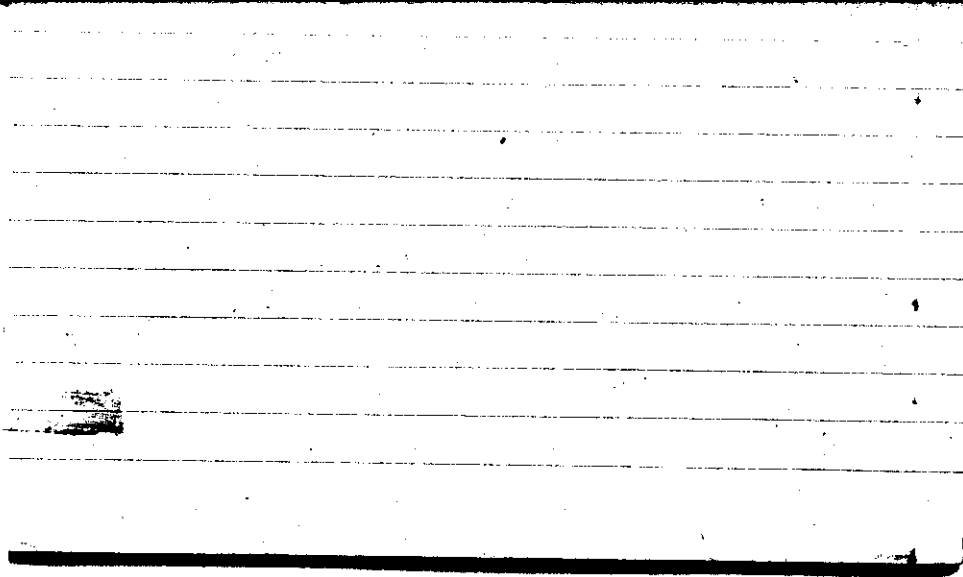
STATE COLLEGE, Pa. Date

MAY 30 1942

Time
0700

Max. 86	Wind F W 2	Barom. t 81	General Obs. ∞	
Min. 62	Vis. km. 6	p 29.02	☉ 15-1700 es Pan ☽ 1700-1710 es neb.	
Dry 70	Clouds <1	p(red.) 28.88	☽ 2100-2400	
Wet	Ac			
R.H. 74		Morn. Hazy fair, to pty cldy	Foren. cldy	
Precip. mm/ in.		Noon cldy	Aftern. cldy	
Snowfall/-Depth in/ in.		Eve. pty cldy	Night cldy	

HN



BRIDGE COLLEGE, Pa. Date MAY 31 1942

Time 0700

Max. 89	Wind F W-2	Barom. t 81	General Obs. ☉ 0520-0540; 0605-0610 ☽ 0000- ☾ 1645-1800 ☉ 1715-1745 ☽ 2000-2400 ☽ 2030-2120 ☾ 2250-2400
Min. 67	Vis. km. 18	p 28.95	
Dry 68	Clouds 9	p(red.) 28.81	
Wet	Ac sc		
R.H. 85		Morn. cloudy	Foren. cldy
Precip. 0.2 mm / 0.01 in.		Noon cldy	Aftern. cflr cflw cldy cb / cflw
Snowfall / -Depth / in / in		Eve. cldy thunder	Night over. Ts

1R

